



Portland Ceasefire

Gun Violence Reduction Strategy

Sierra Ellis

Ceasefire Director

Franz Schoening

Commander, PPB



Portland.gov

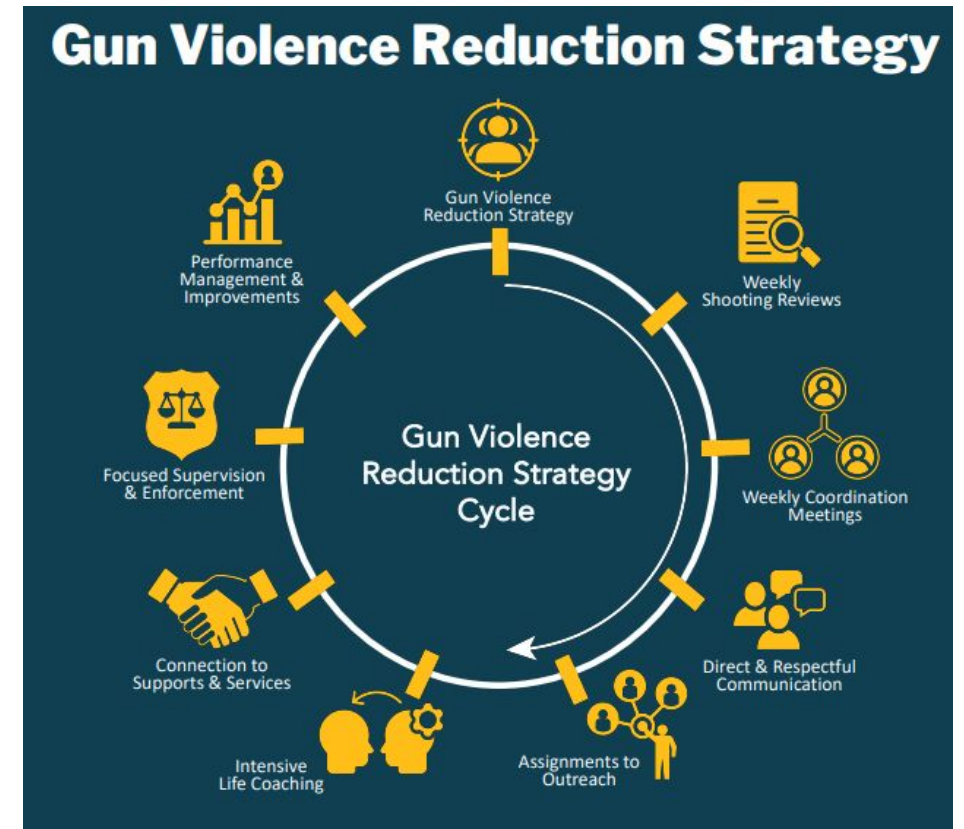


Disclaimer:

We want to acknowledge the pain of community violence and its lasting impacts, including the perpetuation of a cycle of poverty and trauma that falls disproportionately on Portland's Black community.

Ceasefire is a strategic Community-Law Enforcement Partnership

- Collaboration involving many organizations including the Office of Violence Prevention, Portland Police Bureau, and regional law enforcement agencies, and multiple community partners
- Data driven
- Focus on individuals at the highest risk of perpetrating or being a victim of gun violence, including retaliatory violence
- Offer of services and support to disengage high-risk individuals from the cycle of violence
- Accountability through focused enforcement
- The primary goals are to **reduce community violence** and **the law enforcement footprint** on our most vulnerable and high-risk communities



High-Risk for Gun Violence Defined:

(generally meeting a least 5 of the 7 risk factors)

- Male.
- Aged 18–44.
- 5–8 previous arrests.
- Associated with or active group involvement.
- Previously shot.
- Socially connected to recent (past 6–months) shooting or homicide victim.
- Prior criminal justice system involvement (including felonies and prior probation or post–prison supervision).



Portland.gov

Outreach Model – Relentless Pursuit

It often takes many weeks for Outreach Workers to successfully contact and connect with referred individuals. This means that it is not unusual for Service Acceptance data to indicate “pursuing/pending” as Outreach Workers follow the Relentless Pursuit model.

Relentless Pursuit refers to the **intensity of effort** involved in attempting to contact and engage individuals into violence intervention services. Relentless Pursuit includes any and everything needed to locate, engage, and get onto the caseload, a very high-risk individual, including:

- Frequent calls and texts
- In-person visits
- Engage family, friends, and all known contacts
- Leverage contacts with current program participants
- Leverage social media
- As a last resort, if the individual is on probation/parole, contact the Probation Officer



It often takes 3-5 months of relentless pursuit to find, contact, connect, and build relationships with high-risk individuals before an outreach worker can successfully transition these individuals into long-term ICM services.

– National Institute for Criminal Justice Reform





Enhanced Community Safety Team

Mission: To reduce gun violence in Portland through investigation, accountability, and community partnership.

Structure & Focus: When fully staffed, ECST consists of 3 sergeants, 10 detectives, and 10 officers.

Strategic Approach:

- All injury shootings are assigned to a detective. Additional non-injury shootings/firearm cases are triaged and assigned based on a variety of factors (Likelihood of retaliation, victim cooperation, # of victims, etc.)
- Operates under the **Ceasefire Strategy (est. 2023)**
- Prioritizes individuals groups/gangs/crews most at risk of violence and retaliation

Shooting review:

PPB currently hosts a weekly shooting review meeting to share information. This meeting is attended by CJIS approved stakeholders in the bureau, local agencies, and federal partners. All Portland related shootings are discussed and information, including NIBIN leads, are shared. Regional partners are also given the opportunity to discuss any other relevant information they have, including information about shootings in their jurisdictions.





Focused Intervention Team

Mission & Goals

- When fully staffed, FIT consists of 2 sergeants and 12 officers.
- Reduce gun violence through interdiction & intervention
- Respond to gun-related calls & shootings
- Build relationships with at-risk individuals and families
- Gather intelligence on gun violence & retaliation
- Conduct investigations, case follow-ups, and serve search warrants
- Engage with community: events, funerals, vigils, outreach

Key Role in Ceasefire Strategy

- Conduct focused enforcement
- Initiate service referrals
- Monitor and disrupt retaliatory violence
- Collaborate with law enforcement & community orgs





Focused Intervention Team

2024 Statistics

•Firearms Recovered

- Since January 1st 2024, FIT personnel have been directly involved in 118 incidents where a firearm was recovered with a total of 201 firearms recovered
- Of those 118 incidents, 53 (45%) were connected to an additional shooting through NIBIN.
- 9 incidents (17%) were connected to more than five shootings.

Focused Intervention Team Community Oversight Group

Commenced in June 2021 in response to the gun violence crisis in Portland to work with the Focused Intervention Team (FIT) and assist with recommendations to reduce gun violence through prevention, intervention, and response.





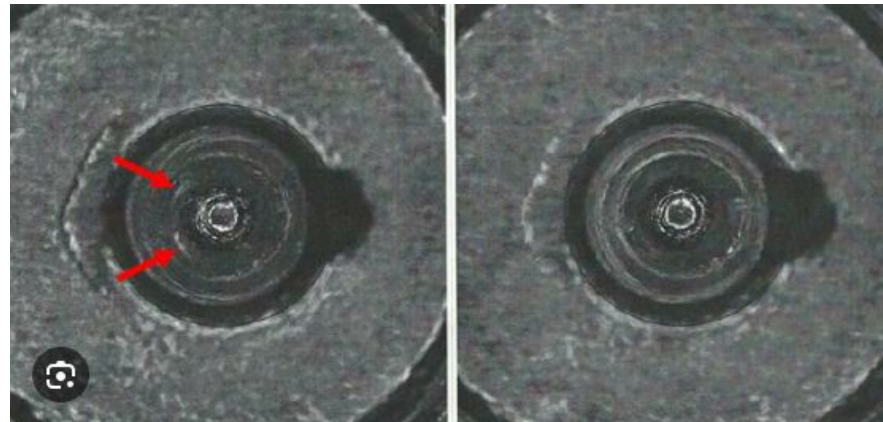
National Integrated Ballistic Information Network

NIBIN: In the Portland metropolitan area, the BRASSTRAX acquisition station is located at PPB's North Precinct. PPB has opened its doors in collaboration with regional agencies to use NIBIN to assist in investigations in other jurisdictions. Currently, 16 agencies use PPB's IBIS machine. All regional police agencies and sheriff's offices were trained by PPB's NIBIN administrator.

Since 2019 (through 2024), the Portland NIBIN site has triaged more than 37,015 cartridge casings and had 13,140 acquisitions, which has generated 7,095 leads. Approximately 5,000 guns have been tested.

Process: Eligible firearms are tested within 72 hours. The cartridge casings are triaged and then entered into the brasstrax machine. The casings are analyzed and leads are developed. The leads are then pushed out to any investigators that have cases involving the same firearm.

After testing and evaluation, all eligible firearms are entered into the eTrace program. PPB TFOs collaborate with the ATF and use leads developed through eTrace to assist in firearm trafficking and straw purchase investigations.





Shooting Incident & Firearm Homicide Data

	2024	2023	Percent Change 2024 vs 2023	2019	Percent Change 2024 vs 2019
Total Shooting Incidents	803	1,025	-22%	413	94%
Firearm Homicides Victims	55	61	-10%	23	139%
Non-Fatal Injury incidents	173	224	-23%	76	128%
Non-injury shooting Incidents	577	745	-23%	315	83%
Casings Recovered	4,164	4,523	-8%	1,816	129%
NIBIN LEADS	530	680	-22%	155	242%



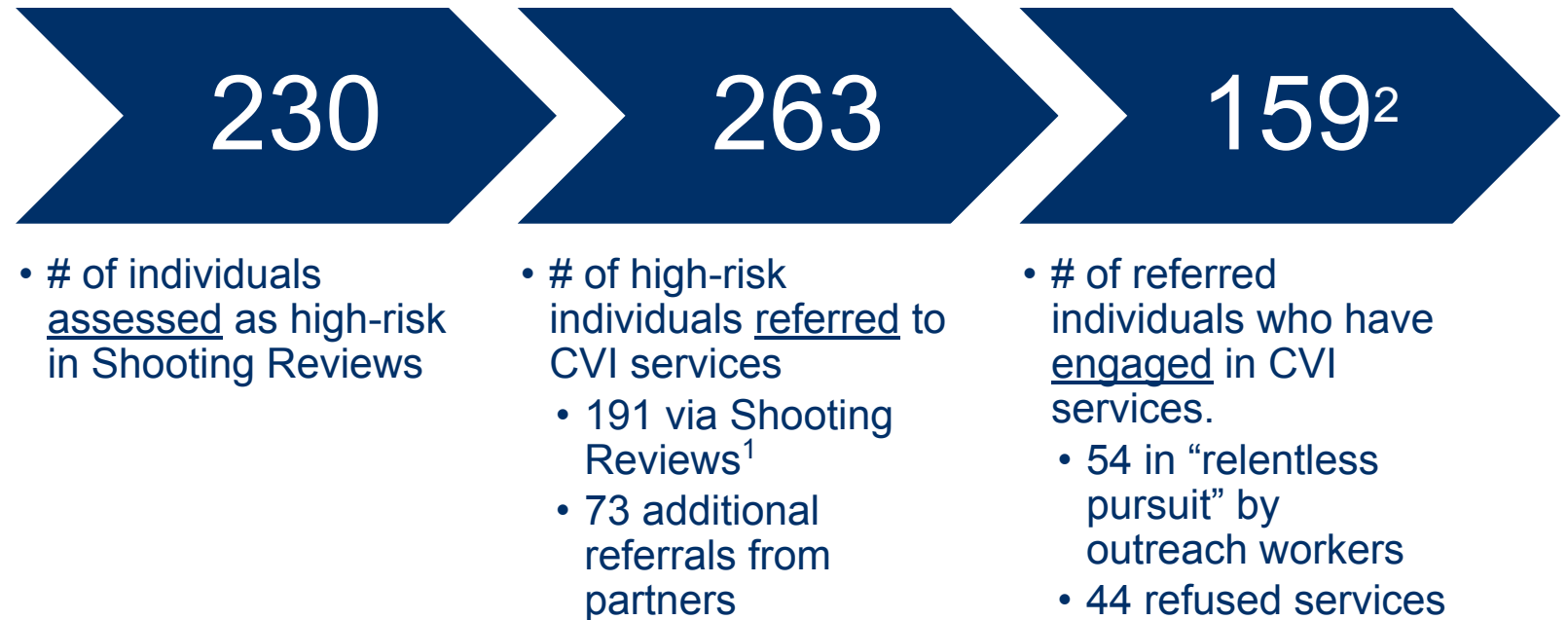
Ceasefire Strategy in Action



*Very High-Risk individuals are generally defined as meeting at least 5 of 7 risk factors: male, aged 18-44, 5-8 previous arrests, associated with or active group involvement, previously shot, socially connected to recent (past 6-months) shooting or homicide victim, prior criminal justice system involvement (including felonies and prior probation or post-prison supervision).



2024 Ceasefire Referrals to Services

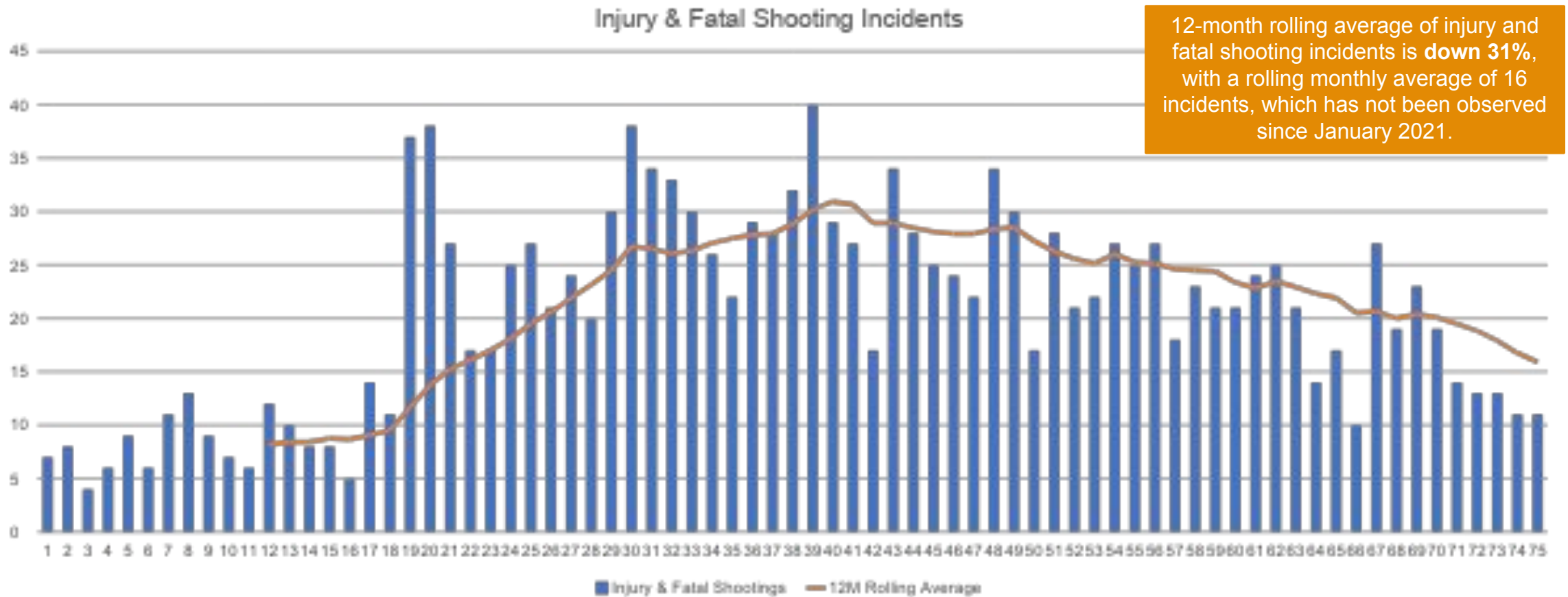


Note: ¹ 39 individuals assessed in Shooting Reviews were referred to services outside of OVP or were otherwise unable to be referred to CVI services. ² 6 individuals referred to CVI services were unable to be placed into services or were referred to non-CVI services.



Progress has been made:

Injury & fatal shooting incidents have been on a near continuous decline since peaking in the middle of 2022.



Top Drivers of Gun Violence¹

While substantial progress has been made in reducing community violence, and gun violence in particular, gang and group conflicts continued to be the primary driver of gun violence in Portland in 2024.

Top Drivers of Gun Violence:

1. **Gang and Groups – 33%**
2. Domestic Violence – 12%
3. Housing instability – 12%
4. Robbery/Stolen Vehicle – 8%
5. Personal Dispute – 8%



Portland.gov

¹ Gun violence in this analysis includes homicide, non-fatal injury, and non-injury shootings.
Data Source: Ceasefire Weekly Shooting Review. Data represent both victims and suspects involved in shooting incidents.

Despite significant reductions in gun violence, there remains much work to do to continue the downward trend.

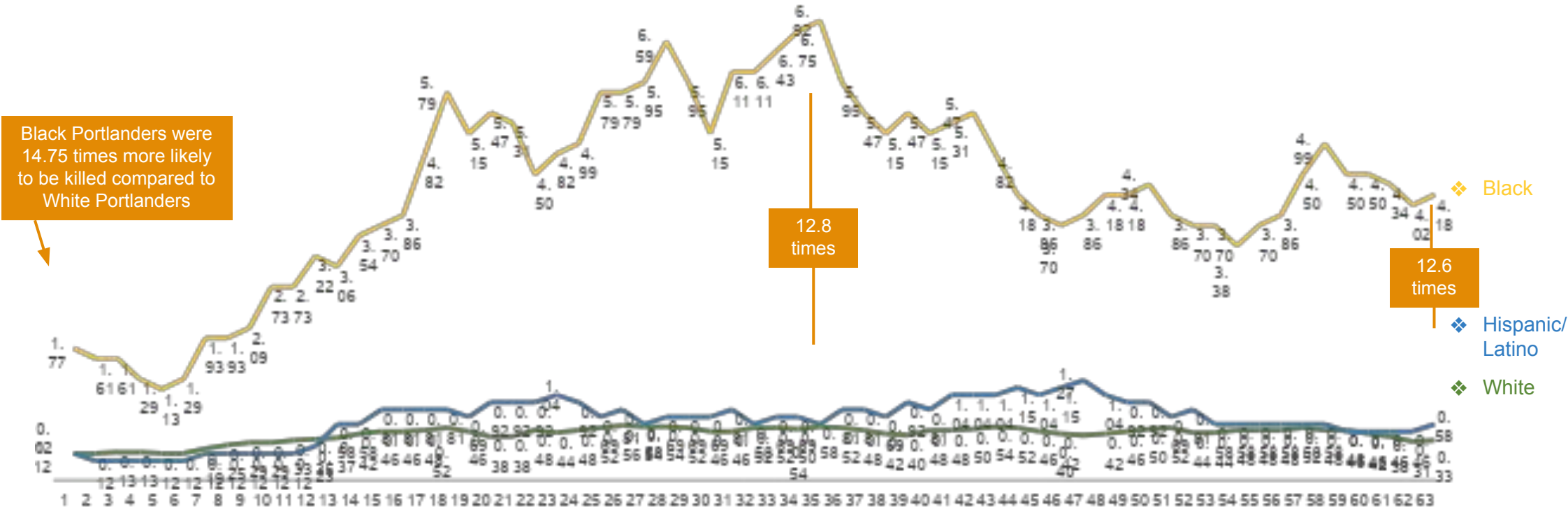
And while the data are encouraging, there remains vast disparities in terms of which communities are the most impacted by gun violence in Portland.

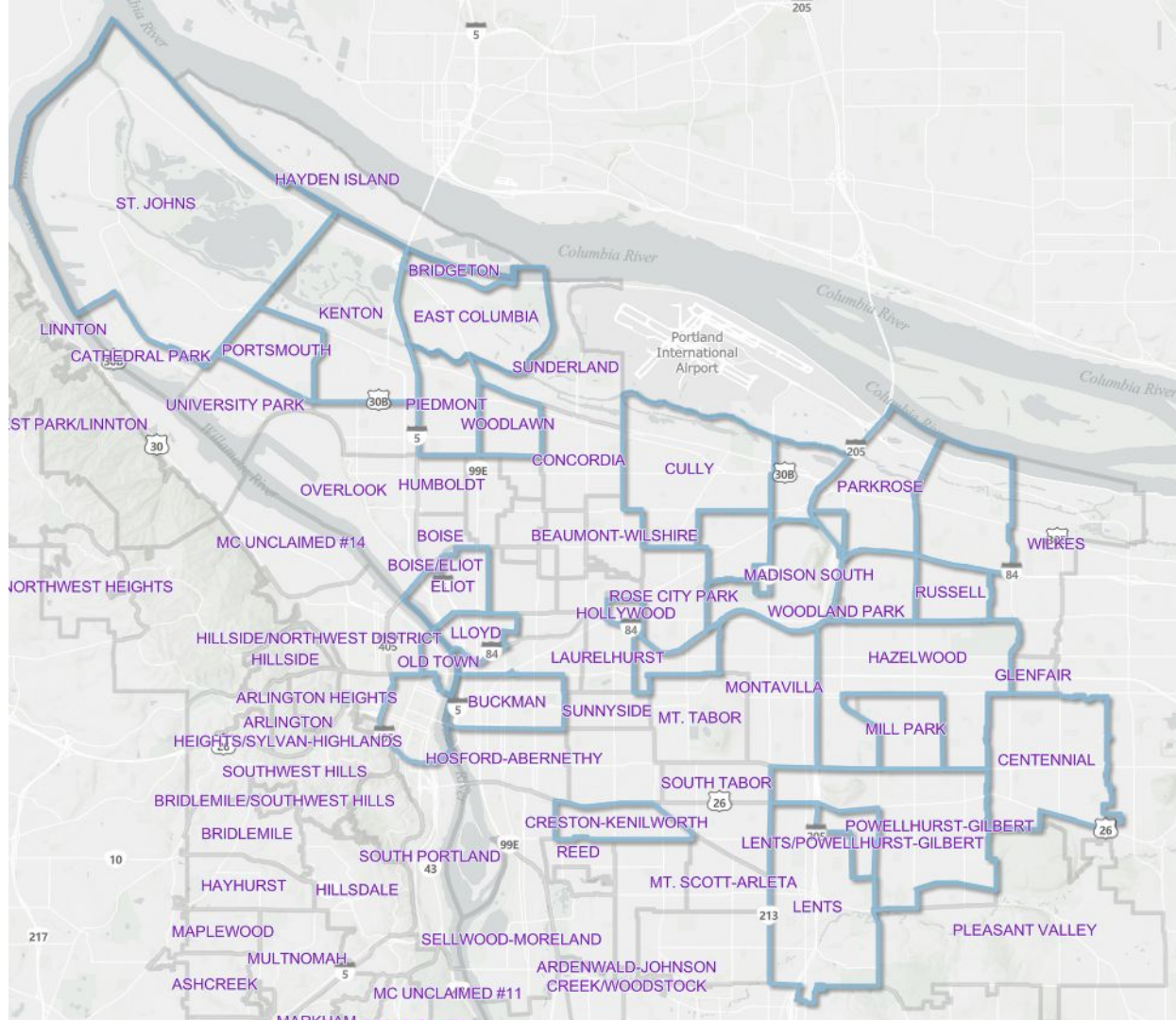


Portland.gov

The disproportionate impact of gun violence on Black and Brown communities is stark: *Black Portlanders are 12.6 times more likely to be killed by gun violence compared to White Portlanders.*

Firearm Homicide Rate (per 100,000 residents) by Race/Ethnicity: 12-Month Rolling Average





Since 2019, 77% of firearm homicides have occurred in 26 (28%) neighborhoods, highlighted with the blue border.

Many of these neighborhoods are Portland's most vulnerable and high-risk, located on the outer Eastside—east of 82nd Ave.—and to the North and Northeast along the I-5 corridor.





Vulnerability of Houselessness

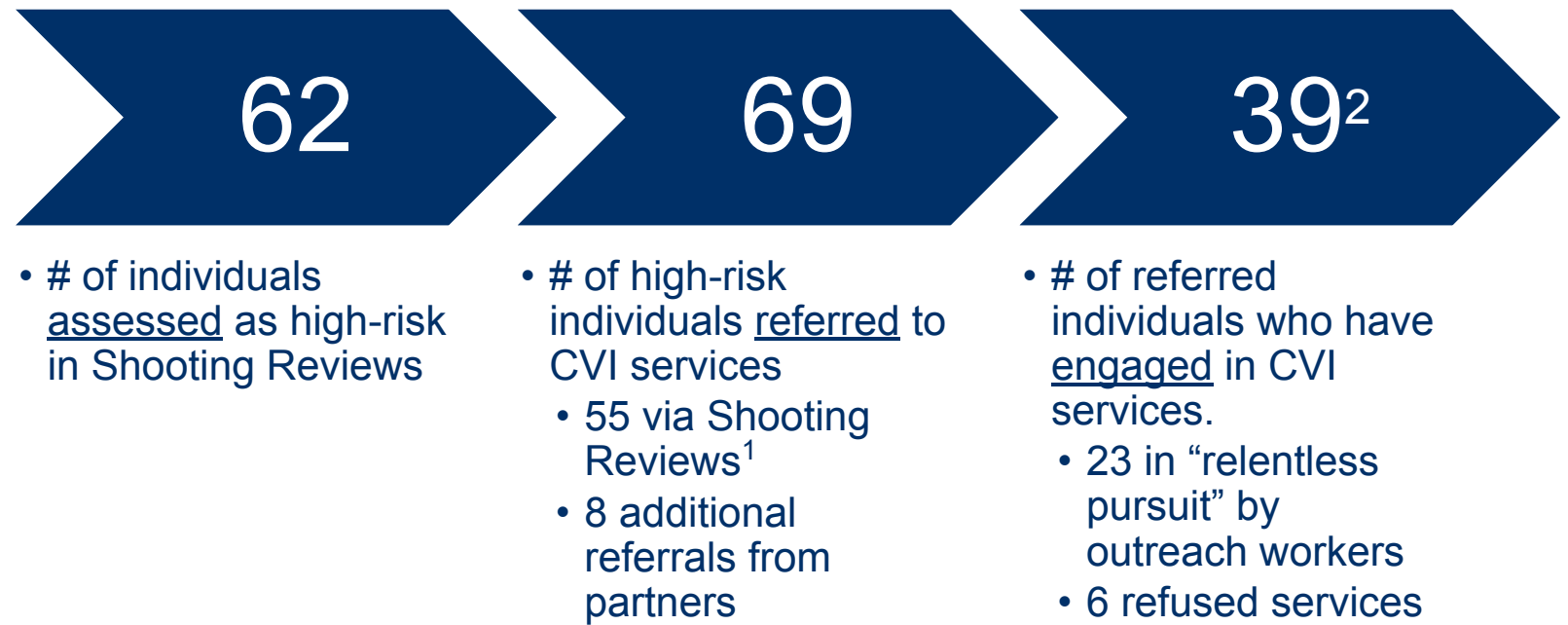
Houseless individuals represented an estimated 38% of all homicide victims, and 31% of firearm homicide victims, in 2024 but represent less than 1% of the greater Portland population¹.

This disparity in homicide victimization means that the houseless are approximately 650 times more likely of being killed by gun violence compared to housed Portlanders.

¹ Population estimates come from the [2023 Point in Time Findings Report](#).



2025 Ceasefire Referrals (January-March)



Note: ¹ 7 individuals assessed in Shooting Reviews were referred to services outside of OVP or were otherwise unable to be referred to CVI services. ² 1 individual referred to CVI services was determined to be low-risk by the service provider.





Portland.gov

The City of Portland is committed to providing meaningful access. To request translation, interpretation, modifications, accommodations, or other auxiliary aids or services, contact 311, Relay: 711.

Traducción e Interpretación | Biên Dịch và Thông Dịch | अनुवादन तथा व्याख्या | 口笔译服务 | Устный и письменный перевод |
Turjumaad iyo Fasiraad | Письмовий і усний переклад | Traducere și interpretariat | Chiaku me Awewen Kapas | 翻訳または通訳 |
ການແປພາສາ ຫຼື ການອະທິບາຍ | الترجمة التحريرية أو الشفهية | [Portland.gov/bps/accommodation](https://portland.gov/bps/accommodation)