



POWELLHURST
PLACE

APARTMENTS FOR RENT

READY FOR MOVE IN MARCH 2024



UNIT

- 1 and 2 bedrooms available
- In-Unit Bike Storage in select units



COMMUNITY

- Secure Bike Storage Room
- Community Room
- Playground
- On-Site Management
- Secure-Access Building
- Laundry Room



APPLIANCES

- Dishwasher
- Fridge
- Microwave
- Stove
- Air Conditioning



TECH

- Free Community Wifi
- Cable Ready
- Energy Efficient Building



NEIGHBORHOOD

- TriMet bus lines #10 & #73
- Powell Butte Nature Park
- Springwater Corridor Trail

LOCATION

5416 SE 122nd Avenue, Portland, OR 97236



BRAND NEW

Be one of the first to live at Powellhurst Place!



Affordable Housing

income limits apply, please contact us for more details

INTERESTED IN THIS APARTMENT ?

Reserve your space today!

 971-282-7726



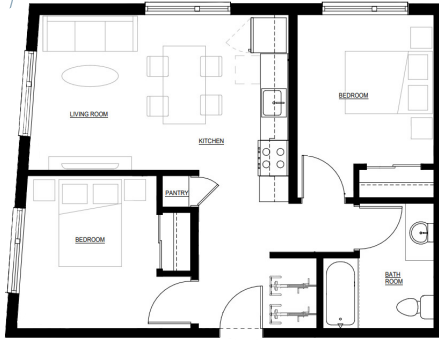
powellhurst@nwrecc.org



www.powellhurst.nwrecc.org/

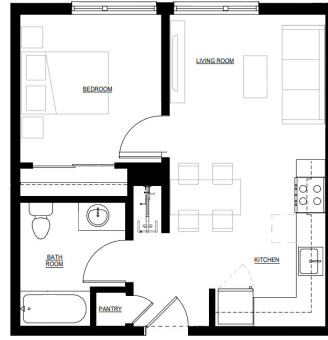


310-356-3180

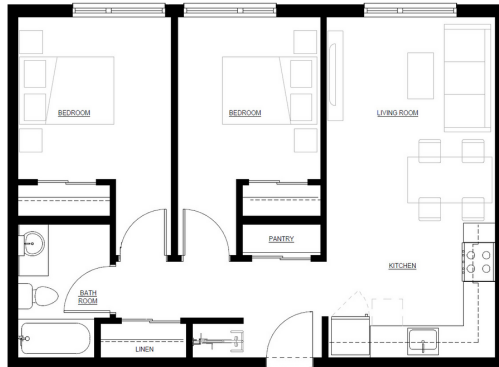


2 BED 1 BATH
664 - 816 square feet

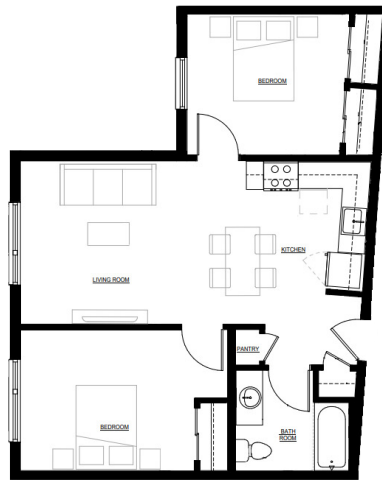
1 BED 1 BATH
526 - 810 square feet



2 BED 1 BATH
664 - 816 square feet



2 BED 1 BATH
664 - 816 square feet



Apartment floor plans are for illustrative purposes only. Actual square footage and layout or apartment features may vary



Northwest Housing Alternative's Resident Services helps create strong and healthy communities.

Resident Services Core Program

Housing Stability Services

- **Information and Referrals:** Provide links to resources that help residents access new opportunities or stability and growth
- **Eviction Prevention & Lease Compliance:** Access services and resources needed for housing stability
- **Community Building:** Help residents organize activities and events that build cohesive rental communities

Household Opportunity & Advancement Services For Families and Individuals

- **Employment Services:** Links to career counseling, job skills training, and help overcoming barriers to employment
- **Asset Building:** Individual Development Account (IDA) program, links to classes and information about banking, credit, and savings
- **Youth Services:** Referrals to healthy and educational activities
- **Adult Education:** GED, ESL, and continuing education

