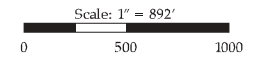


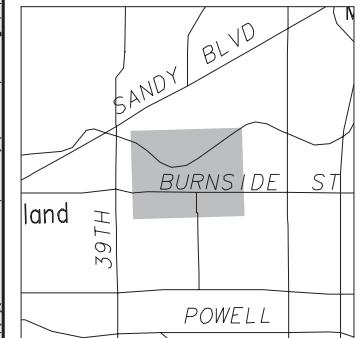
Representative District 46

Precinct 3248
Multnomah County, Oregon

This map was produced for the Multnomah County Elections Division by the Metro Data Resource Center. The information on this map was derived from digital databases on Metro's GIS. Care was taken in the creation of this map. Metro cannot accept any responsibility for errors, omissions, or positional accuracy. There are no warranties, expressed or implied, including the warranty of merchantability or fitness for a particular purpose, accompanying this product. However, notification of any errors will be appreciated.



Multnomah County Elections Division
1040 SE Morrison Street
Portland, OR 97214
Voice 503 988-3720
FAX 503 988-3719



Location map