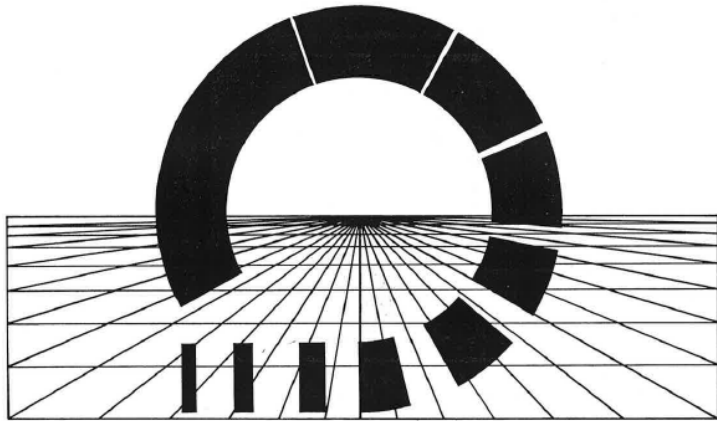


40 MILE LOOP

40TH ANNIVERSARY

1983 - 2023

The *40 Mile Loop Master Plan* is the planning document that lead to the incorporation of trail alignments in local government plans.



40 MILE LOOP MASTER PLAN

MAY 1983

PREPARED FOR: 40 MILE LOOP LAND TRUST

PREPARED BY: DAVID EVANS and ASSOCIATES, INC.



— Hiking and or Bicycle Trail
- - - Bicycle Trail Only



North

40 Mile Loop Trail Route

This is the 40 Mile Loop today.



The 40 Mile Loop is an assemblage of named trails.

Peninsula Crossing

Marine Drive Trail

Wabun Trail

Leif Erickson

North Portland Greenway

Columbia Slough

Sandy River Greenway

Wildwood

Eastbank Esplanade

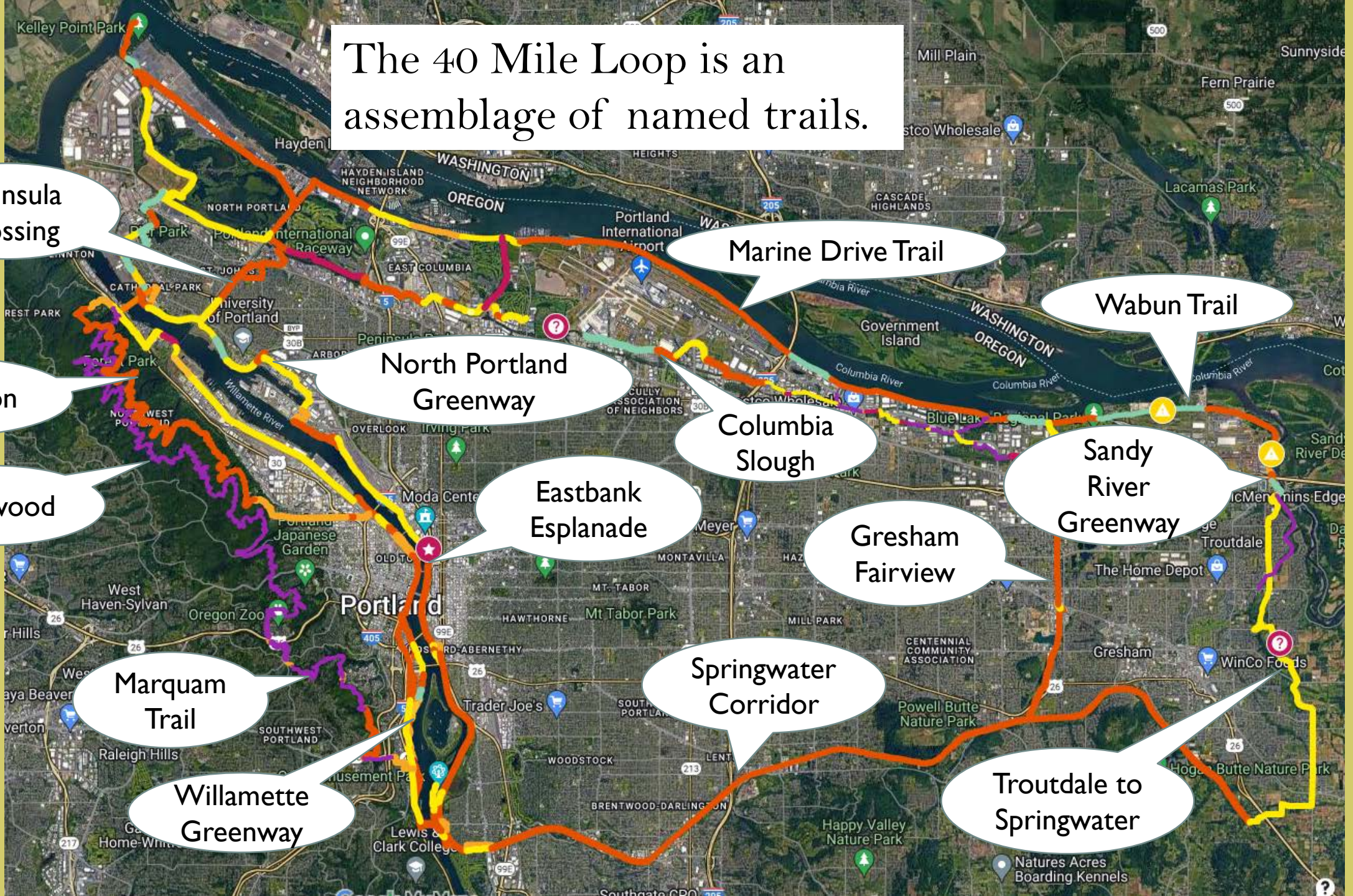
Gresham Fairview

Marquam Trail

Springwater Corridor

Troutdale to Springwater

Willamette Greenway



The 40 Mile Loop does not include the much talked about Green Loop.

Peninsula Crossing

Marine Drive Trail

Wabun Trail

Leif Erickson

North Portland Greenway

Columbia Slough

Sandy River Greenway

Wildwood

Eastbank Esplanade

Gresham Fairview

Green Loop

Springwater Corridor

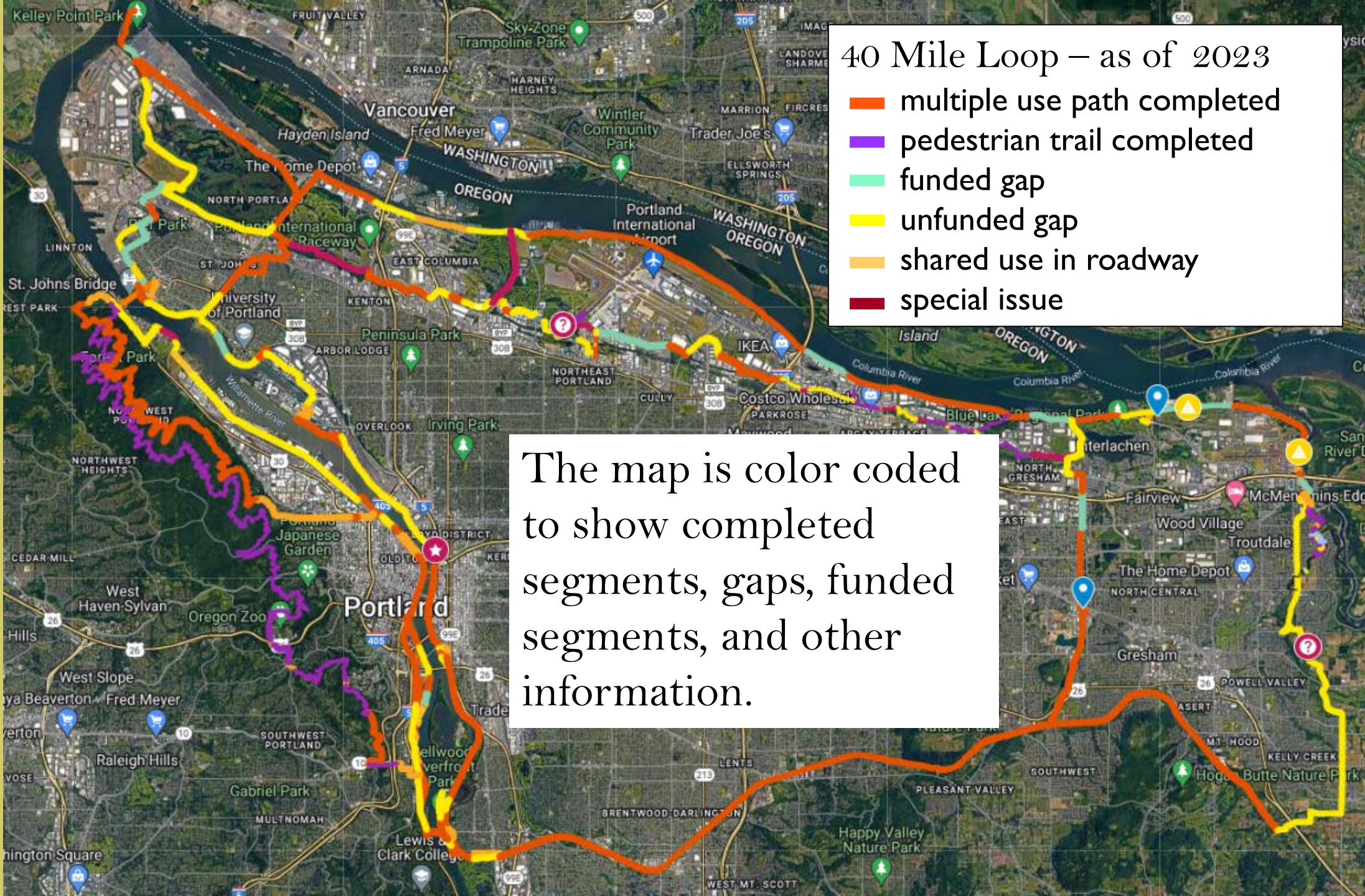
Marquam Trail

Willamette Greenway

Troutdale to Springwater



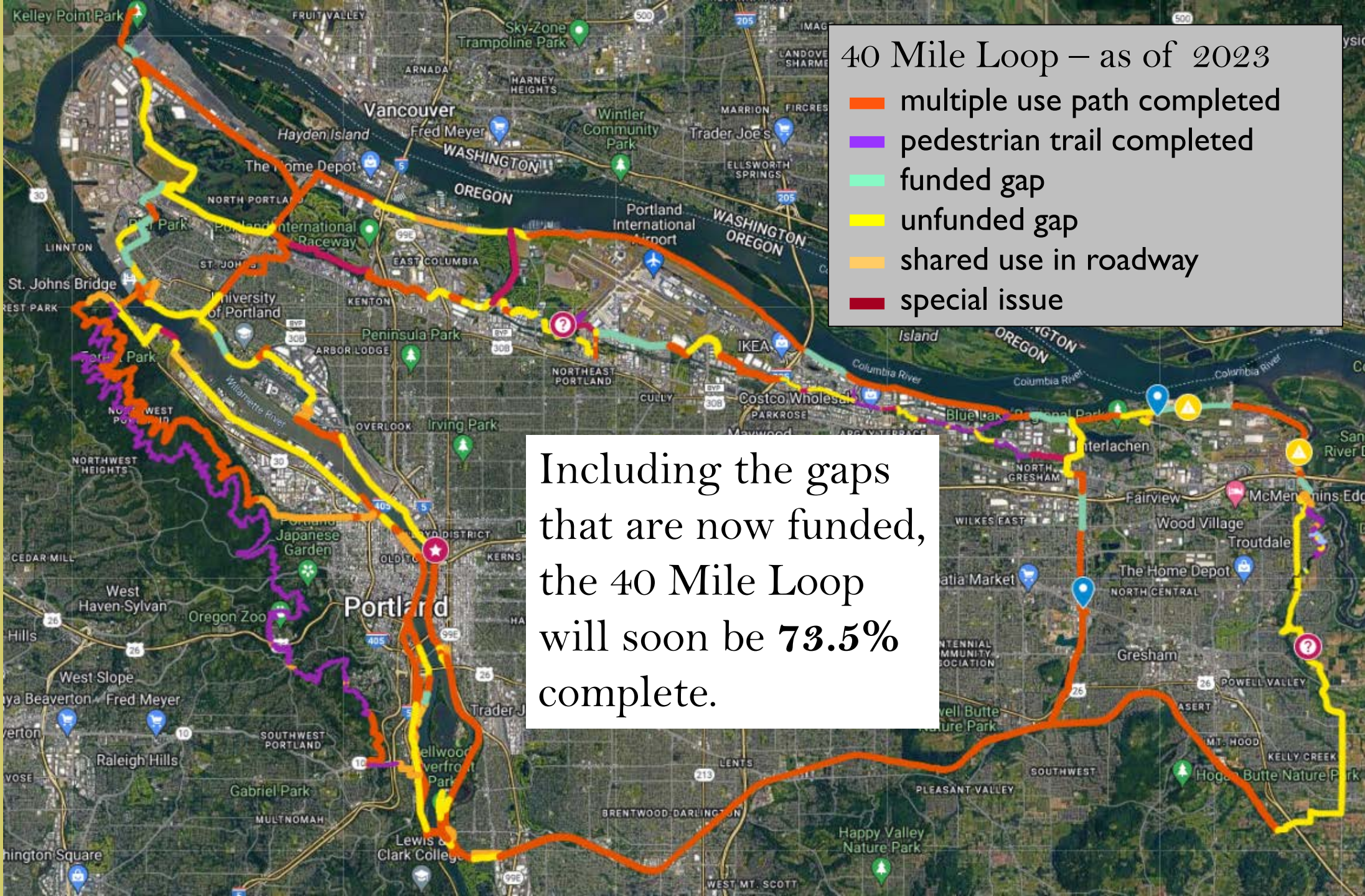
The overall length
of the 40 Mile Loop
is actually **150 miles.**



40 Mile Loop – as of 2023

- multiple use path completed
- pedestrian trail completed
- funded gap
- unfunded gap
- shared use in roadway
- special issue

The map is color coded to show completed segments, gaps, funded segments, and other information.



40 Mile Loop – as of 2023

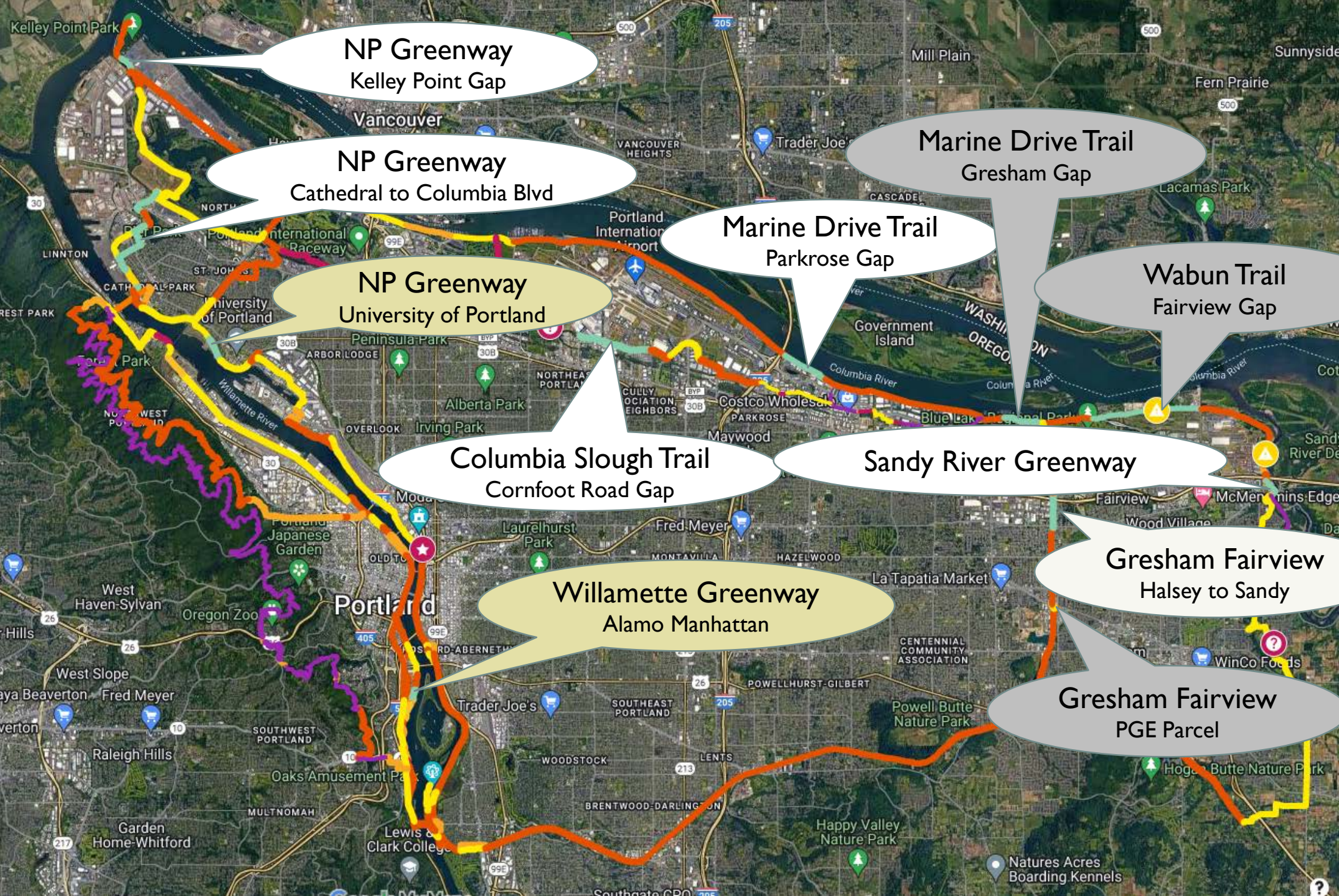
- multiple use path completed
- pedestrian trail completed
- funded gap
- unfunded gap
- shared use in roadway
- special issue

Including the gaps that are now funded, the 40 Mile Loop will soon be **73.5%** complete.

2022 was the most successful funding year for the 40 Mile Loop since the Vera Katz Eastbank Esplanade was completed in 2001.

Thanks to the availability of funds from and through Metro, and thanks to strong proposals from our local partners, 6 projects on the 40 Mile Loop were funded in the total amount of \$20,082,079.

Marine Drive Trail	Portland PP&R	\$2,261,645
North Portland Greenway, Kelley Point	Portland PP&R	\$1,881,008
North Portland Greenway, Cathedral/Columbia Blvd	Portland PP&R	\$4,860,647
Columbia Slough Trail, Cornfoot Road	PBOT & Port	\$4,900,000
Gresham Fairview Trail, Halsey/Sandy	Gresham	\$4,232,979
Sandy River Greenway	Troutdale	\$1,945,800



NP Greenway
Kelley Point Gap

NP Greenway
Cathedral to Columbia Blvd

NP Greenway
University of Portland

Columbia Slough Trail
Cornfoot Road Gap

Willamette Greenway
Alamo Manhattan

Marine Drive Trail
Parkrose Gap

Marine Drive Trail
Gresham Gap

Wabun Trail
Fairview Gap

Sandy River Greenway

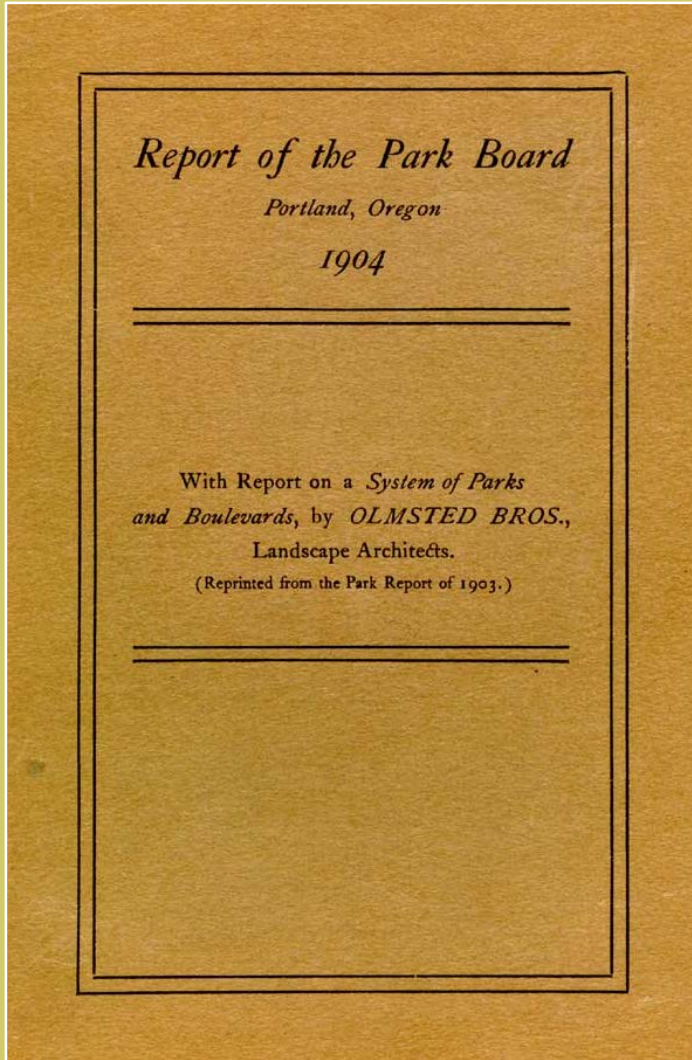
Gresham Fairview
Halsey to Sandy

Gresham Fairview
PGE Parcel

40 Mile Loop issues and challenges for 2023-2024.

The 40 Mile Loop has work to do. We ask that the City of Portland help us take on the following issues and opportunities.

- **Camping on and adjacent to trails.** Our #1 Public Safety issue. Peninsula Crossing, Columbia Slough Trail, Marine Drive Trail, Springwater Corridor. Also the I-205 Pathway.
- **North Portland Greenway advocacy.** What an opportunity this is! And what a challenge. Connect the Vera Katz Eastbank Esplanade to Kelley Point Park.
- **Marine Drive Trail & Interstate Bridge Replacement & Levee Raise.**
- **Columbia Slough Trail.** There are so many issues, literally from one end to the other. There's also opportunity with *Safe Routes to the Slough*.
- **Funding Strategy + Shovel Readiness.** How can we compete for funds in the future?
- **Union Pacific Railroad.** If the UP ever wants anything from the City, please think of us. We have a very long list.

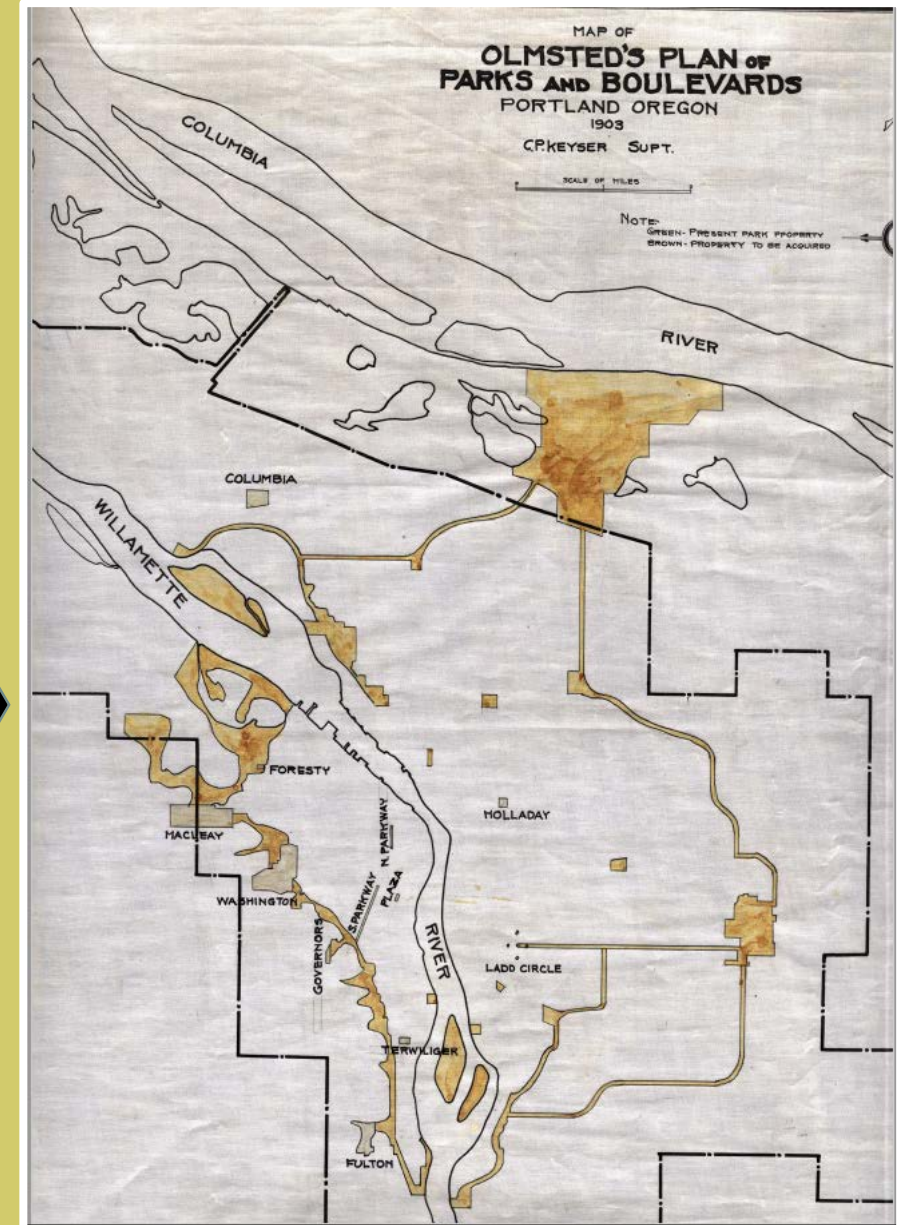


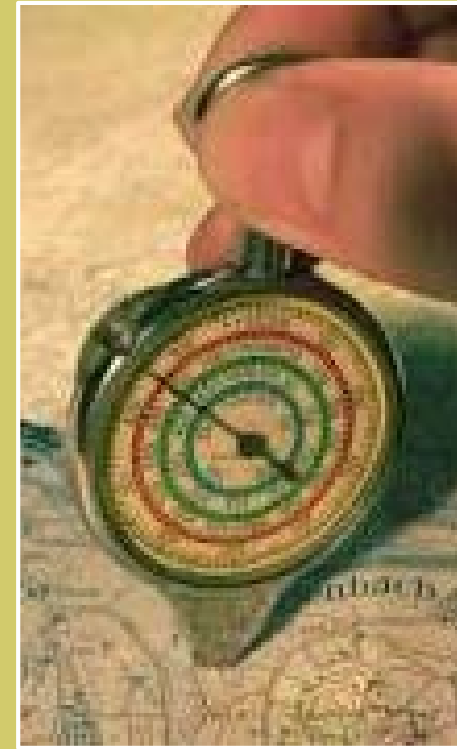
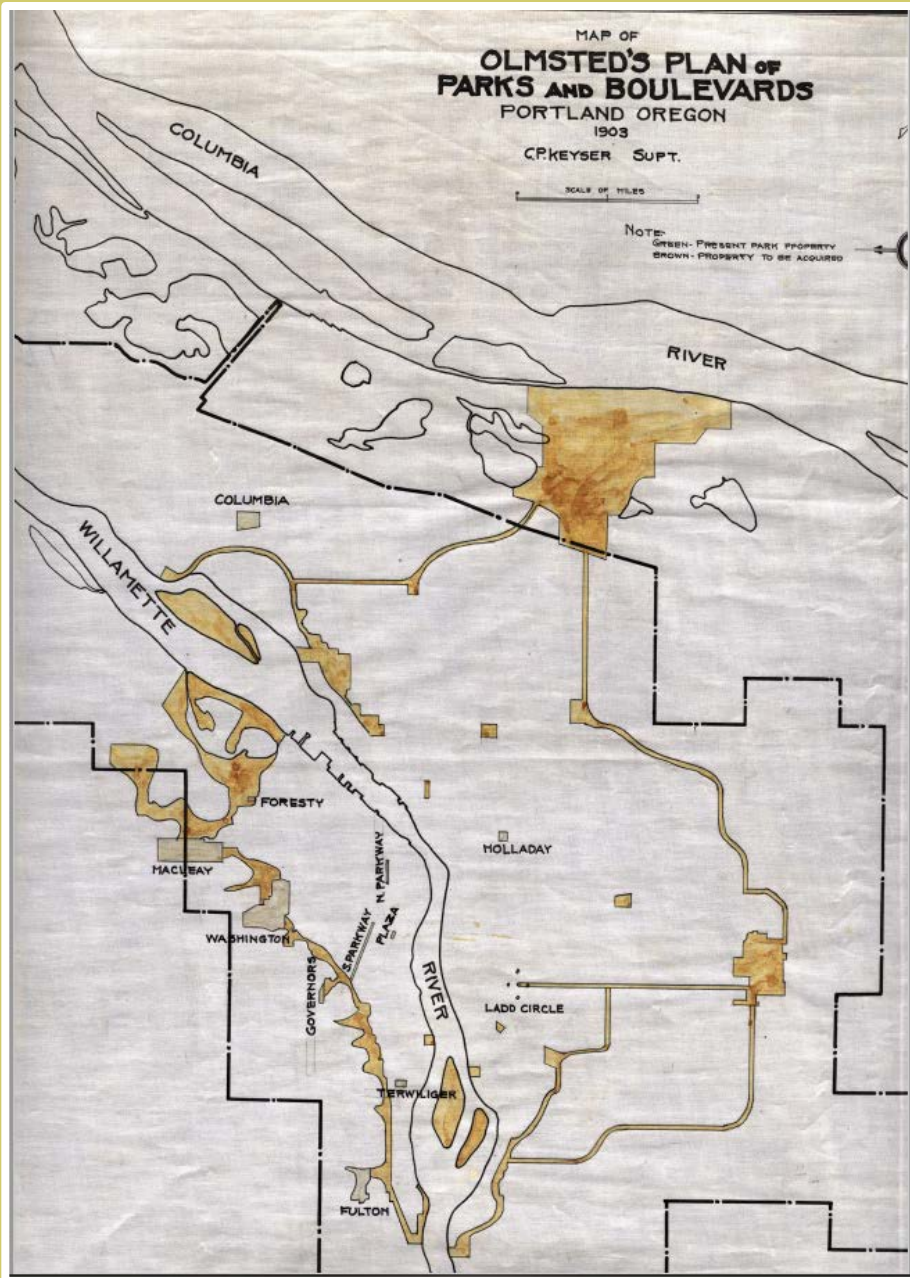
The Olmsted Report

In 1903-04 this first comprehensive vision for parks in Portland called for system of parks connected by boulevards and parkways.

Years later, this interpretation of the Olmsted vision was developed by Portland Parks Superintendent C. P. Keyser (1919-1949).

It clearly shows a system of boulevards connecting parks, forming a great loop around the City of Portland, as had been described by Olmsted.





(op i som' e ter)

The Olmsted Report and the Keyser maps reemerged in the 1970's. When Keyser's park and parkway system was measured with an opisometer, the result was about 40 miles.

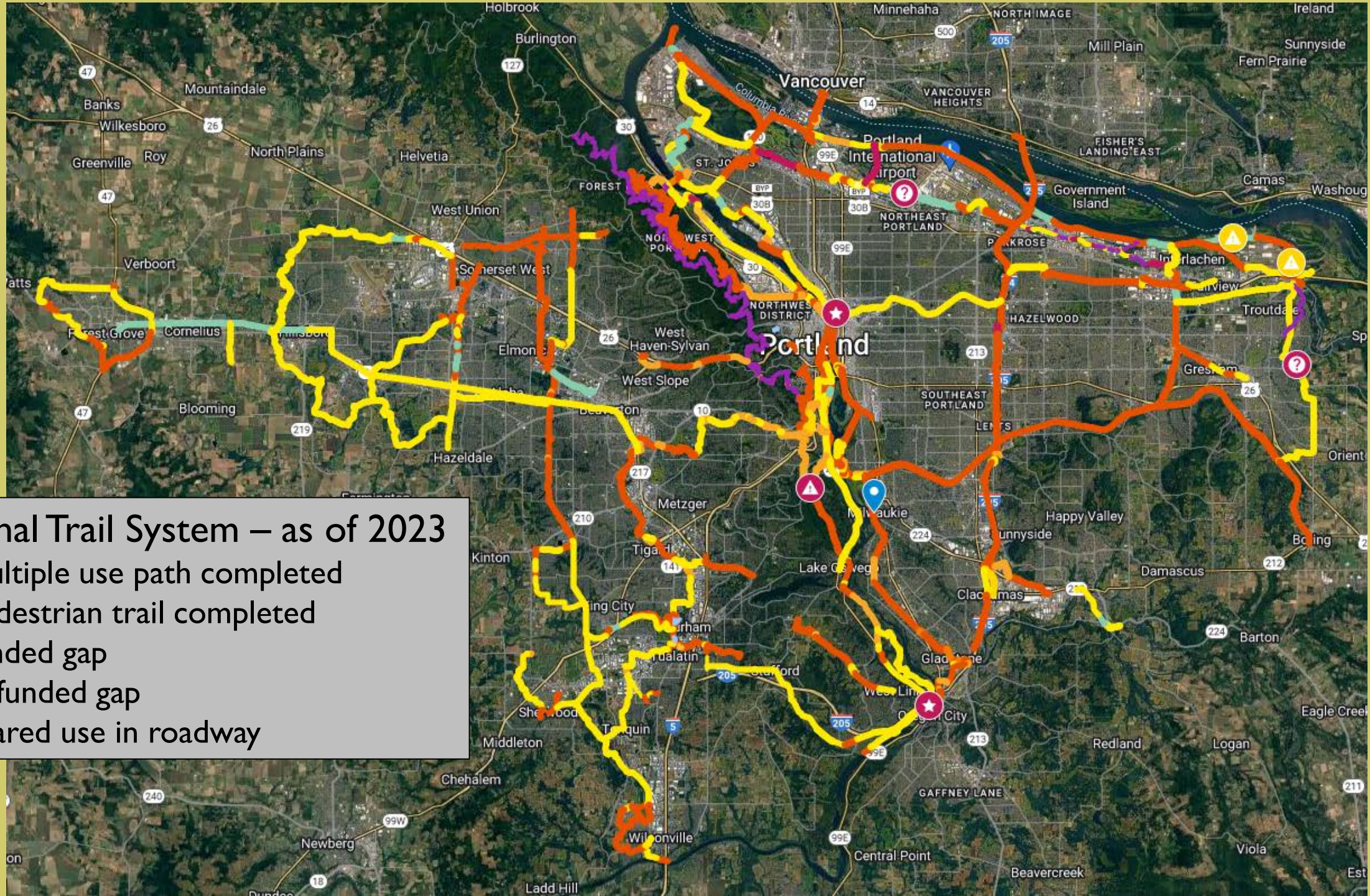
Hence, the name **40 Mile Loop** came into being.

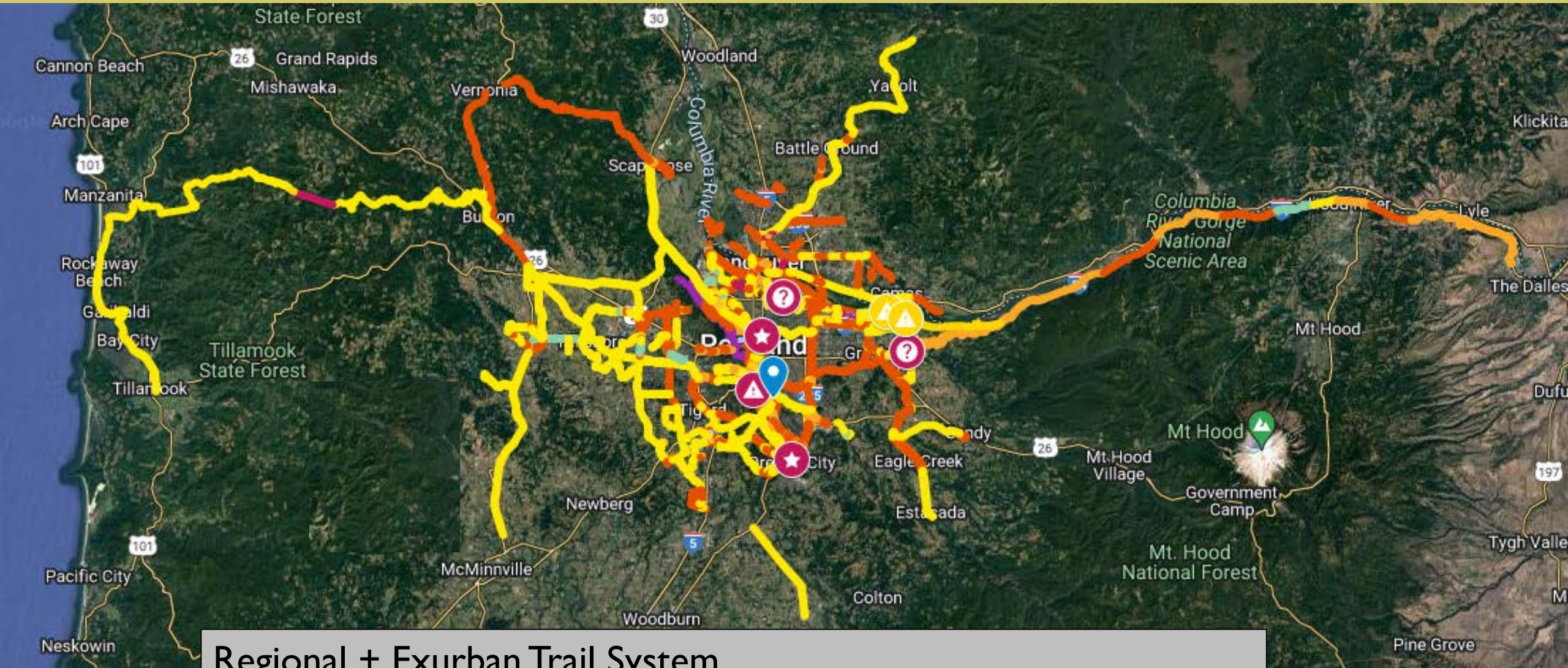
This is the 40 Mile Loop.



Regional Trail System – as of 2023

- multiple use path completed
- pedestrian trail completed
- funded gap
- unfunded gap
- shared use in roadway





Regional + Exurban Trail System

Includes **Vancouver & Clark County Trails**, the **Salmonberry Trail** to Tillamook, the **Historic Columbia River Highway State Trail**, the **Yamhelis Westsider Trail** to McMinnville, and other foreseeable future trails