A stylized graphic on the left side of the slide. It features two dark green mountain peaks with rounded tops. Below the mountains is a dark green wavy band representing a forest or a middle ground. At the bottom is a dark blue wavy band representing a body of water. The entire graphic is composed of solid colors and simple shapes.

ADA Curb Ramp Program Update

Michael Cook
7/10/2024



Prior information

- ADA Transition Plan Presentation: 2-8-2023
 - Inventory physical barriers
 - Curb ramps, signalized crossings, sidewalks, marked crosswalks
 - Methods to remove barriers
 - Policy and Standards
 - Prioritize infrastructure needs
 - ADA focused projects
 - Capital roadway and bridge projects
 - Method to prioritize curb ramps
 - Ramp condition, Presence of truncated domes, Proximity to infrastructure
 - Grouped into 6 tiers
- Board adopted plan March 2023





ADA focused projects

- FY 23: \$1.4 million in One Time Only (OTO) funding
 - Design replacements for Tier 1 Ramps
 - 86 Tier 1 identified in 2016 assessment
 - Support ADA ramps in other design projects
 - 257th corridor project 56 ramps
- FY 24: \$1.735 million OTO funding
 - Finalize Tier 1 ramp design for FY 25 construction
 - Design replacement for Tier 2 ramps
 - 94 Tier 2 identified in 2016 assessment
- FY25: \$2.615 million OTO funding
 - Focus of this presentation

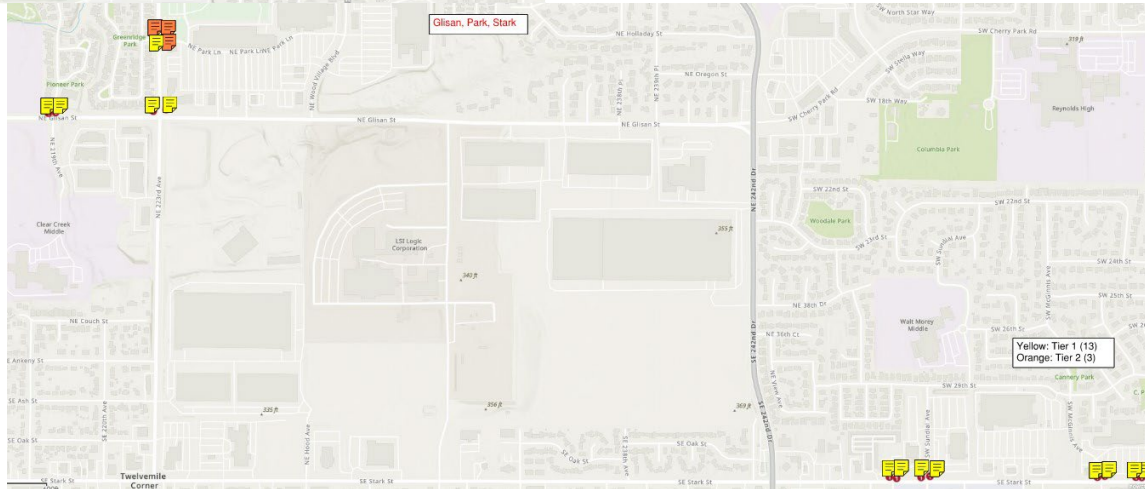
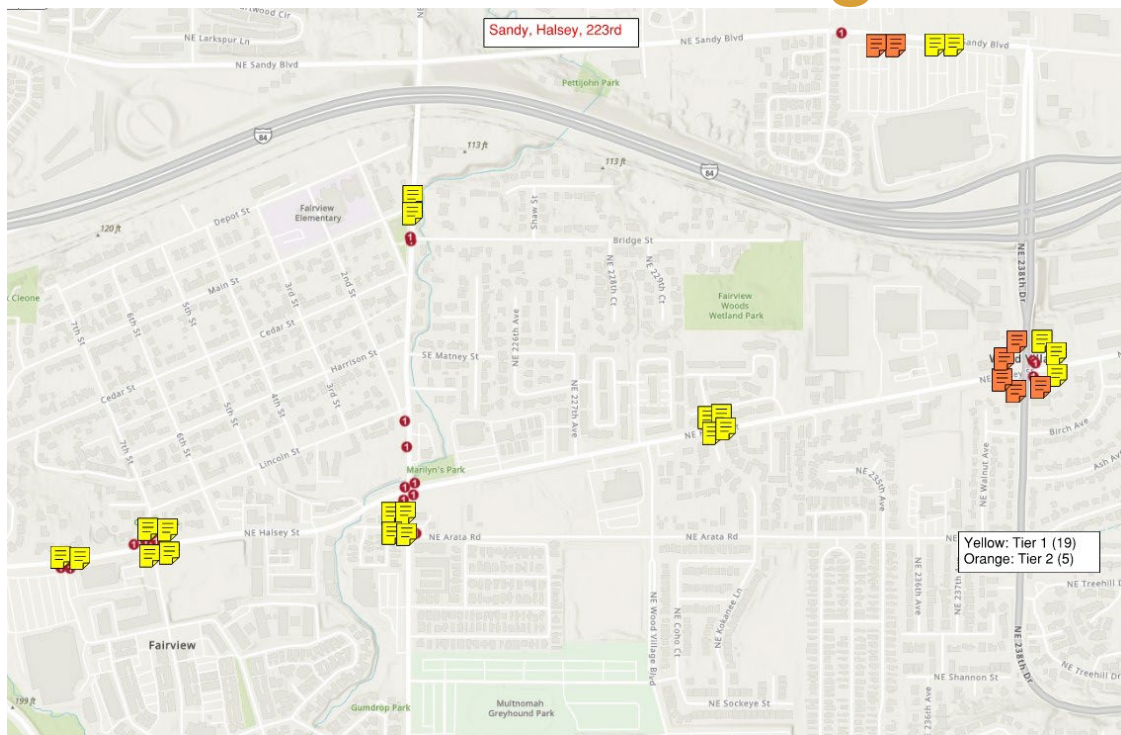


East County Pedestrian Improvements

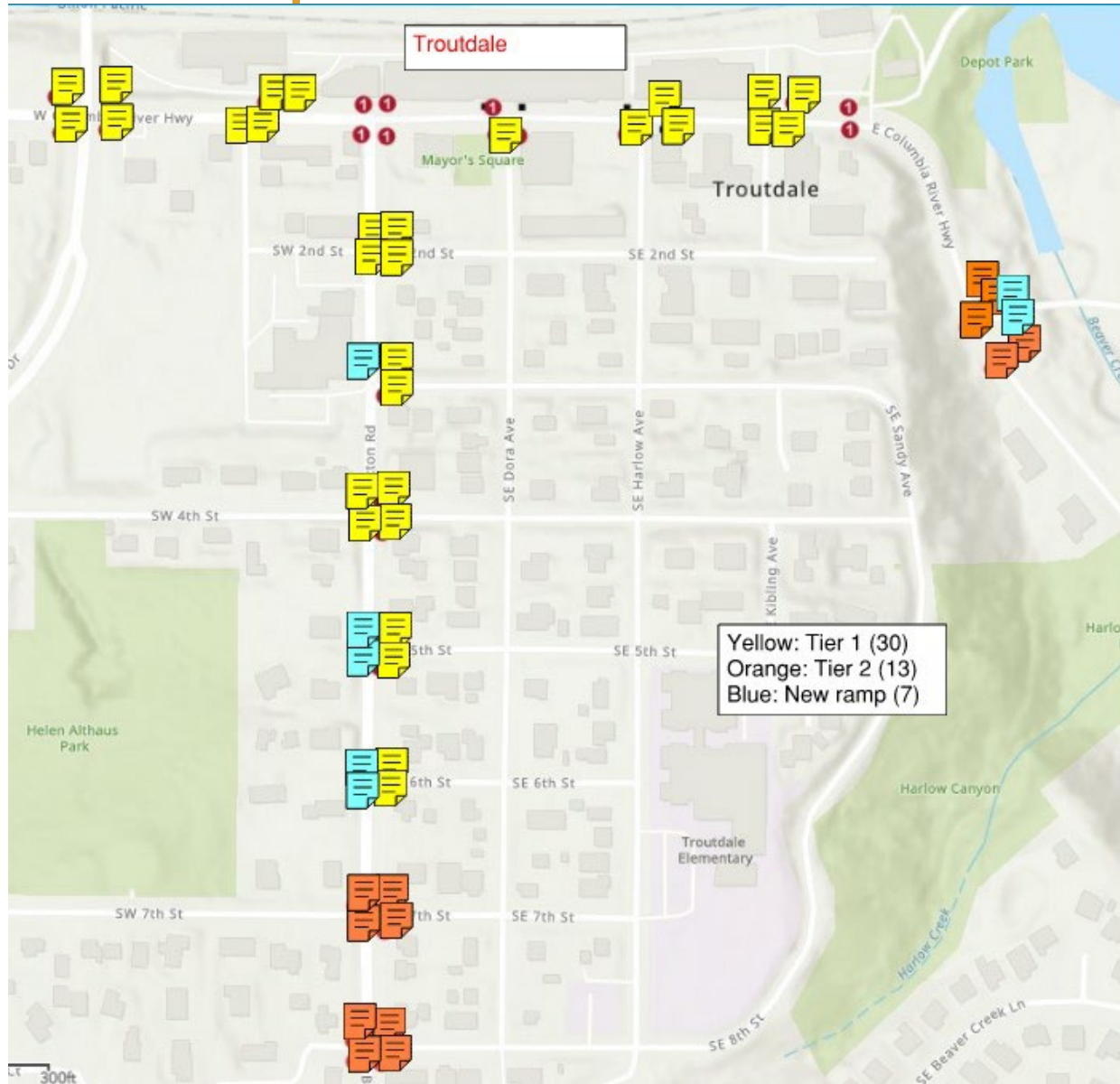
- FY23 Project.
 - Design 112 new ramps
 - 86 Tier 1 ramps
 - 24 Tier 2 ramps
 - Select Tier 2 ramps included to reduce construction impact from multiple projects
 - Ramps located in Troutdale, Wood Village, and Fairview



Fairview/Wood Village/Troutdale ramps



Troutdale ramps

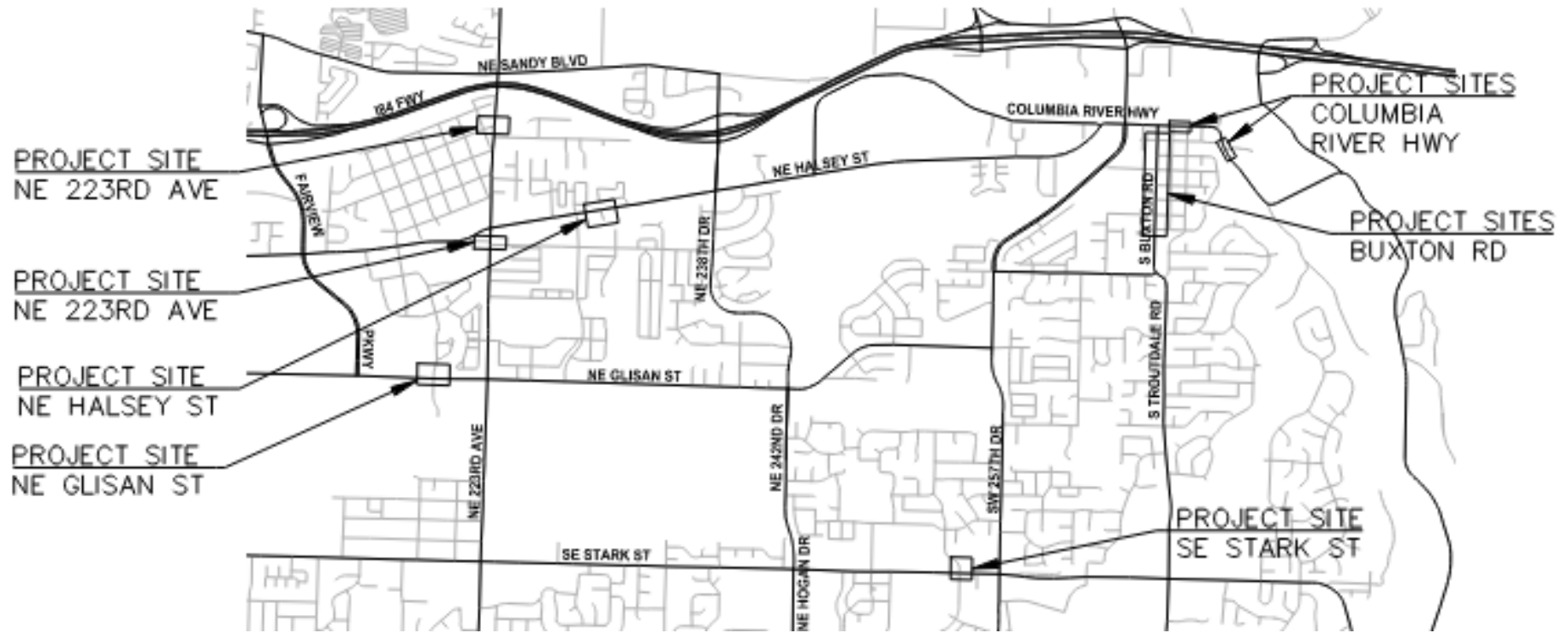


East County Pedestrian Improvements

- FY24 Project split into two phases
 - Phase 1: No Right of way needs, No major utility conflicts
 - 55 new ramps
 - Replaces 39 ramps: 26 Tier 1, 13 Tier 2
 - 6 new ramps where no ramp was present
 - \$2.5 million Project cost
 - Construction \$2.2 million
 - Construction inspection and engineering \$300k.
 - Advertised 6/28, bid opening 7/30.
 - Construct planned September – December 2024
 - Funds must be spent by June 30 2025



Phase 1 locations



East County Pedestrian Improvements

- Phase 2: Right of way needs or major utility conflicts
 - 59 new ramps
 - Replaces 40 ramps: 32 Tier 1, 8 Tier 2
 - 2 new ramps where no ramp was present
- Design complete, waiting on Right of Way acquisition
 - ROW typically takes a year
 - ROW for phase 2 estimated at \$200k
 - Fund availability will be assessed after Phase 1 bid opening
 - If funding available, begin Right of Way acquisition with goal of being construction ready for FY26
 - Funding for Phase 2 construction will not be known until FY 26 budget finalized



Phase 2 locations

