A stylized graphic on the left side of the slide. It features two dark green mountain peaks with rounded tops. Below the mountains is a dark green wavy band representing a forest or a middle ground. At the bottom is a dark blue wavy band representing a body of water. The entire graphic is composed of solid colors and simple shapes.

# ADA Curb Ramp Program Update

Michael Cook  
7/15/2024

# Prior information

---

- ADA Transition Plan Presentation
- Inventory physical barriers
  - Curb ramps, signalized crossings, sidewalks, marked crosswalks
- Methods to remove barriers
  - Policy and Standards
  - Prioritize infrastructure needs
  - ADA focused projects
  - Capital roadway and bridge projects
- Method to prioritize curb ramps
  - Ramp condition, Presence of truncated domes, Proximity to infrastructure
  - Grouped into 6 tiers
- Board adopted plan March 2023



# ADA focused projects

---

- FY 23: \$1.4 million in One Time Only (OTO) funding
  - Design replacements for Tier 1 Ramps
    - 86 Tier 1 identified in 2016 assessment
  - Support ADA ramps in other design projects
    - 257<sup>th</sup> corridor project 56 ramps
- FY 24: \$1.735 million OTO funding
  - Finalize Tier 1 ramp design for FY 25 construction
  - Design replacement for Tier 2 ramps
    - 94 Tier 2 identified in 2016 assessment
- FY25: \$2.615 million OTO funding
  - Covered in this presentation



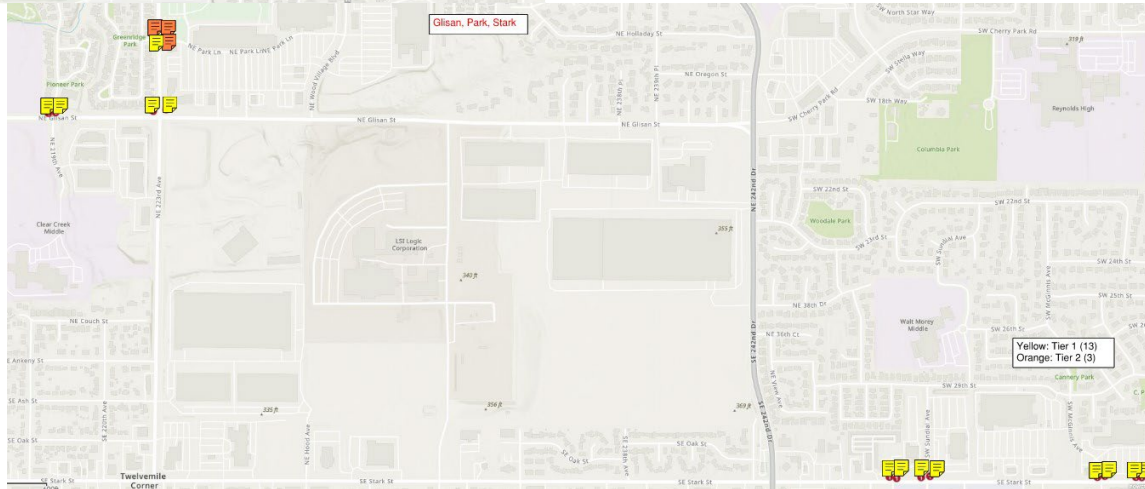
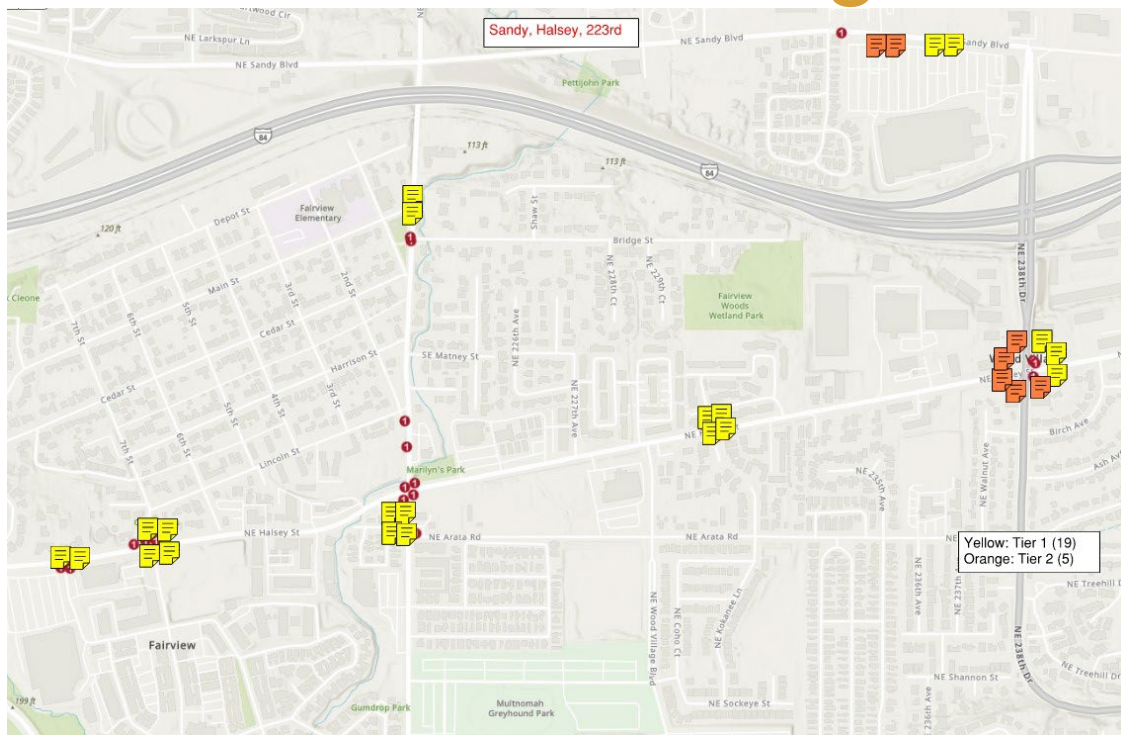
# East County Pedestrian Improvements

---

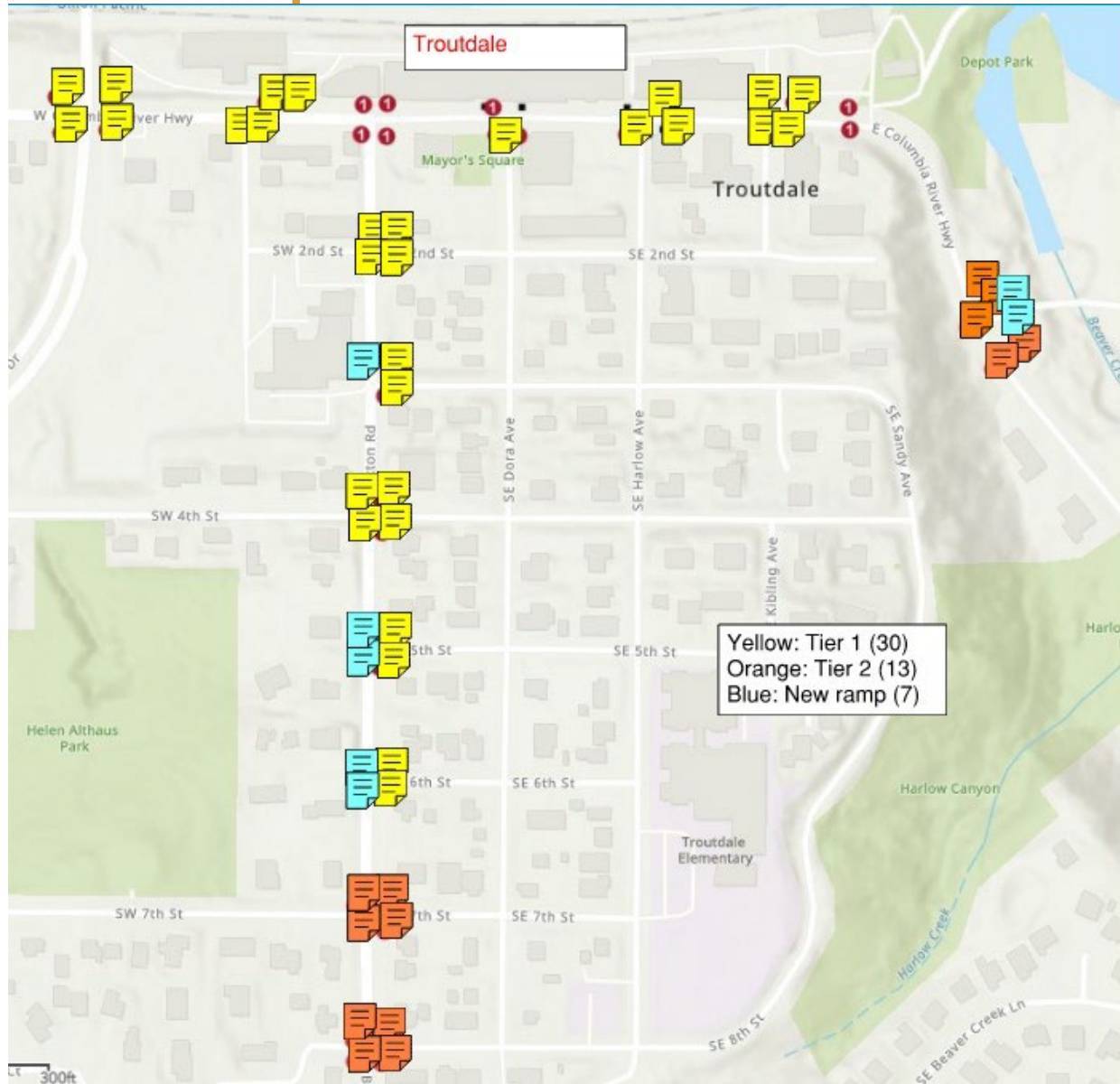
- FY23 Project.
  - Design 112 new ramps
    - 86 Tier 1 ramps
    - 24 Tier 2 ramps
      - Select Tier 2 ramps included to reduce construction impact from multiple projects
  - Ramps located in Troutdale, Wood Village, and Fairview



# Fairview/Wood Village/Troutdale ramps



# Troutdale ramps



# East County Pedestrian Improvements

- FY24 Project split into two phases
  - Phase 1: No Right of way needs, No major utility conflicts
    - 55 new ramps
    - Replaces 39 ramps: 26 Tier 1, 13 Tier 2
    - 6 new ramps where no ramp was present
  - \$2.5 million Project cost
    - Construction \$2.2 million
    - Construction inspection and engineering \$300k.
    - Advertised 6/28, bid opening 7/30.
    - Construct planned September – December 2024
      - Funds must be spent by June 30 2025



# Phase 1 locations





# East County Pedestrian Improvements

- Phase 2: Right of way needs or major utility conflicts
  - 59 new ramps
  - Replaces 40 ramps: 32 Tier 1, 8 Tier 2
  - 2 new ramps where no ramp was present
- Design complete, waiting on Right of Way acquisition
  - ROW typically takes a year
  - ROW for phase 2 estimated at \$200k
  - Fund availability will be assessed after Phase 1 bid opening
    - If funding available, begin Right of Way acquisition with goal of being construction ready for FY26
      - Funding for Phase 2 construction will not be known until FY 26 budget finalized



# Phase 2 locations

