



Draft ADA Transition Plan Briefing Meeting

Transportation Division
Department of Community Services
Multnomah County
April 2022

www.multco.us/adaplan

Agenda

- Background
- Plan background
 - Where this plan covers
 - What this plan does not cover
 - Plan requirements
- Adoption process

We will use www.Menti.com and use the code
8128 0289



Bike ramp from Morrison Bridge to Water Ave ramp



Background

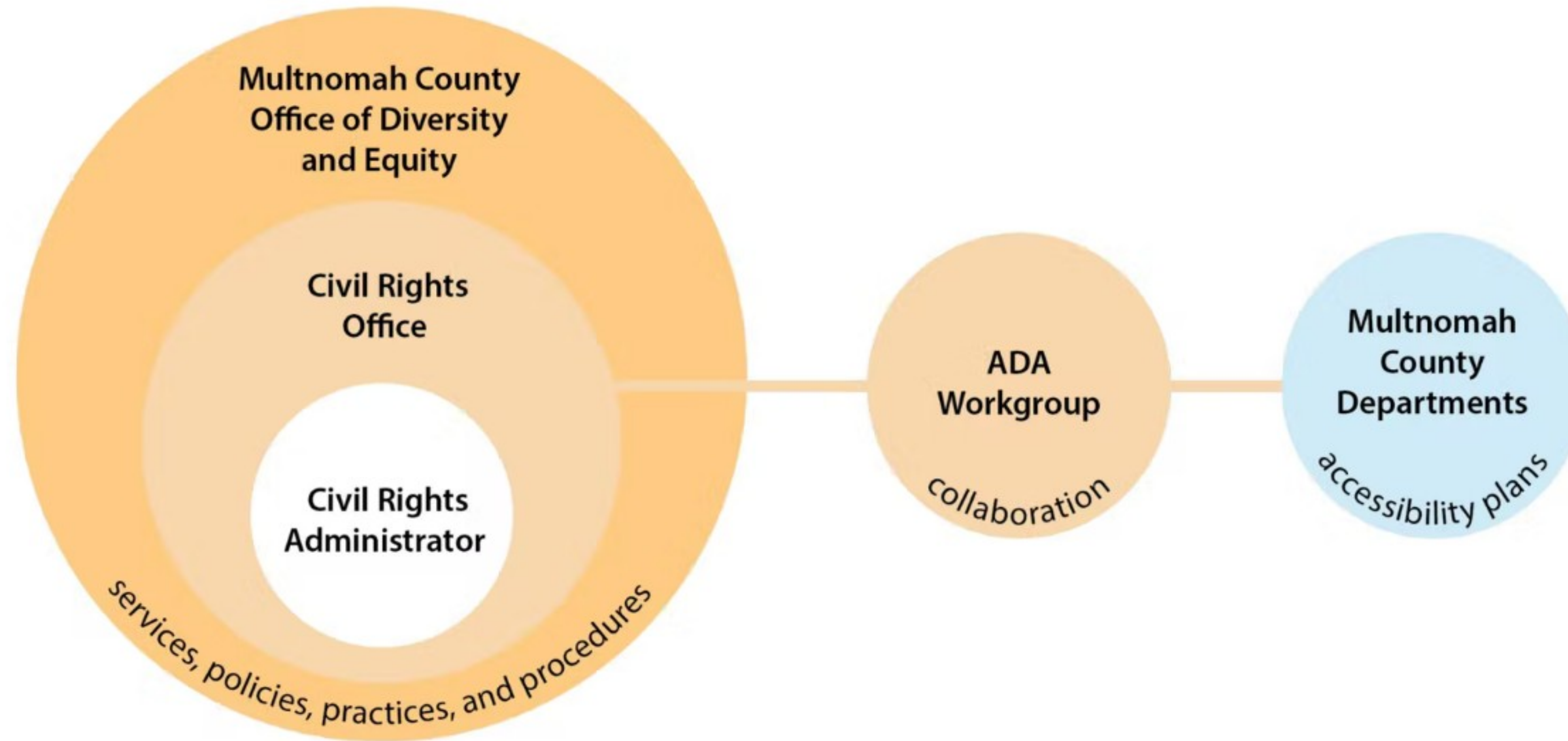
- Americans with Disabilities Act (ADA) Standards for Accessible Design
- ADA Transition Plan
 - Public agencies with 50+ employees
 - Detail steps necessary to make their facilities accessible



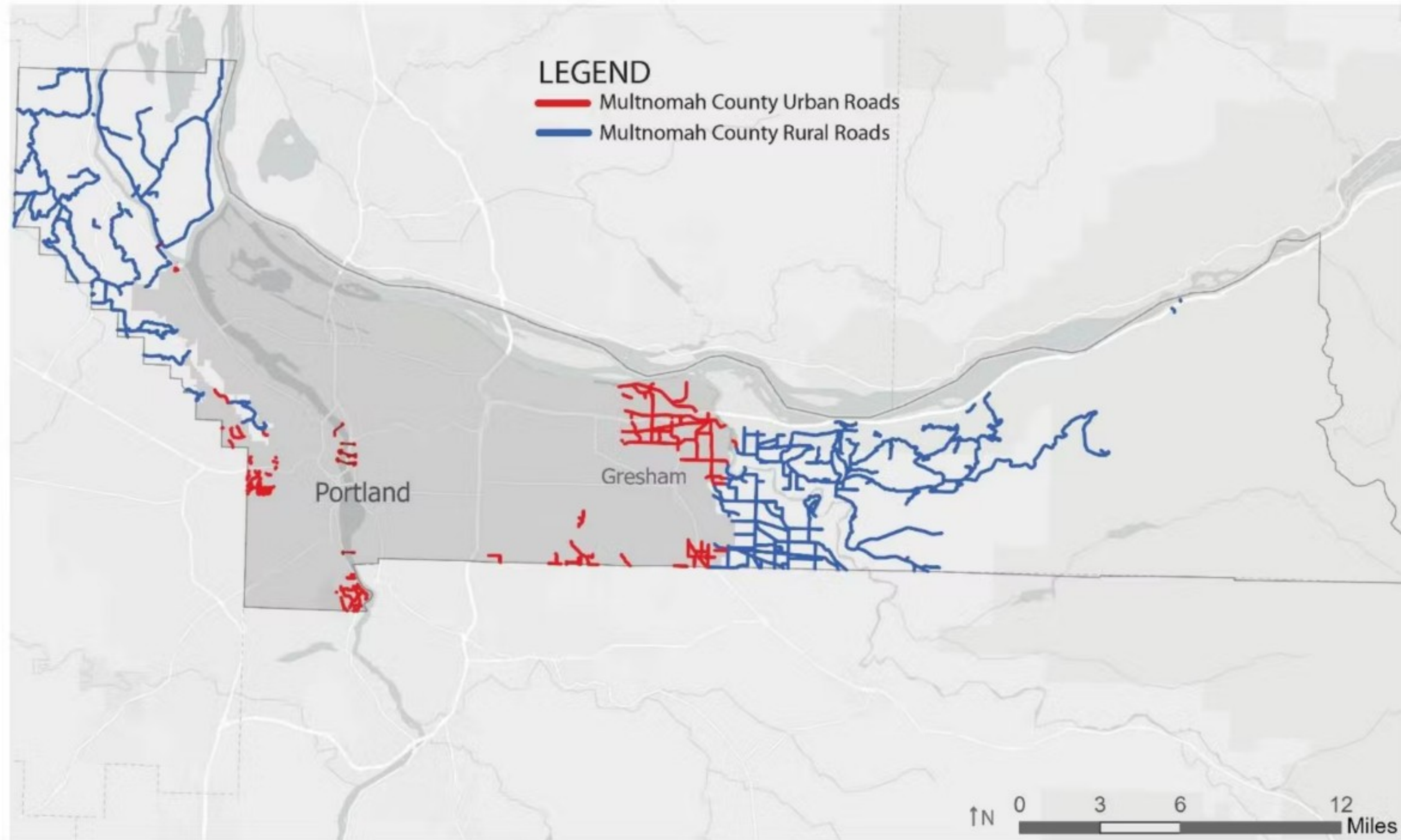
Wood Village Mixed Development NW corner 238th
And Halsey



Background: ADA Programs at the County



Where this plan covers



Plan requirements

- Physical barriers
- Methods to remove barriers
- Schedule
- Person responsible for carrying out the plan



Physical barriers

- Inventory
 - Curb ramps
 - Signalized crossings
 - Additional barriers
 - Sidewalks
 - Marked crosswalks



Water Ave bike ramp from Morrison Bridge



What this plan does not cover

- List of specific ADA projects
- Prioritization of ADA projects
- Design requirements



Method to remove barriers

- Policy and standards
- Prioritizing infrastructure need
- ADA focused projects
- Capital roadway and bridge projects
- Work by others



What other methods should the county consider to remove barriers?

No other suggestions

Public outreach, hearing from the community.

Personally requested barrier removal

near facilities accessed by specific populations (hospitals, specialty schools, medical facilities)

Capital projects that support access to transit.

Outreach to disability community

Method to Prioritize

- Near schools (closer proximity scores higher)
- Near transit stops
- Near transit stops where bus ramps are used
- Paratransit LIFT program trips per month (greater trips scores higher)
- Proximity to people with disabilities (higher concentration of population)
- Near medical facilities, includes: Veterans Affairs Facilities, Primary Care, County medical facility
- Near public park and/or recreational facilities
- Near a public library
- Near a police station
- Near city/civic services
- Near a fire station
- Near a post office
- Near major commercial and retail, major employment, and high-density multi-family housing developments (more sites scores higher)
- Near community centers, places of public assembly, and social services



What are the best ways to engage with people interested in disability and transportation design as we move forward?



Outreach through stakeholder groups

0

Presentation recordings

0

In-person meetings



Virtual meetings

0

Online surveys



Other

Schedule

Method to reduce barrier	Tasks	Timeline
Policy and Standards	1. Finalize ADA Transition Plan	FY 22
	2. Continue participation in Countywide ADA workgroup	ongoing
	3. Coordinate with the Office of Diversity and Equity to create policies encouraging accessibility.	ongoing
Identify Priorities	1. Complete assessment of ADA compliance at signalized crossings (push buttons, crosswalk markings, and ramps)	FY 23
	2. Re-score all ramps (will keep Willamette River Bridges separate)	FY 23
	3. Develop scoring criteria for other ADA assets in County right of way	FY 24
ADA Focused Projects	1. Complete design on 20% of Tier 1 ramps	FY 19
	2. Construct 12 of Tier 1 ramps and acquire ROW for 40 Tier 1 ramps	FY 23
	3. Construct 40 ramps of Tier 1 ramps	FY 24
	4. Complete design on next 20% of Tier 1 ramps	FY 24
Capital Roadway and Bridge Projects	1. Complete construction of NE 238th Drive which will bring roadway into ADA compliance	FY 22-23
	2. Design and construct NE 257 th Drive improvements which will bring roadway into ADA compliance	FY 23-24
	3. Design Sandy Boulevard Sidewalk improvements to be ADA compliant. Seek funds to complete construction.	FY 2025
Work by Others	1. Continue to require all development projects with frontage on County urban arterials and collectors to upgrade sidewalk and ramps to be ADA compliant	ongoing



Person responsible for plan

Jon P. Henrichsen, P.E.

Multnomah County

Director of Transportation and County Engineer

1620 SE 190th Ave., 97233



Adoption Process

- Engagement activities
- Revisions
- Board approval (Summer 2022)



Kennedy Park Subdivision - Halsey St Mid Block Crossing



Contact

Hannah Polow, AICP

Transportation Planner

Hannah.polow@multco.us

303-242-2493

