



# MULTNOMAH COUNTY

## Bridge Maintenance

Oct. 13, 2021

Multnomah County Bicycle & Pedestrian  
Citizen Advisory Committee

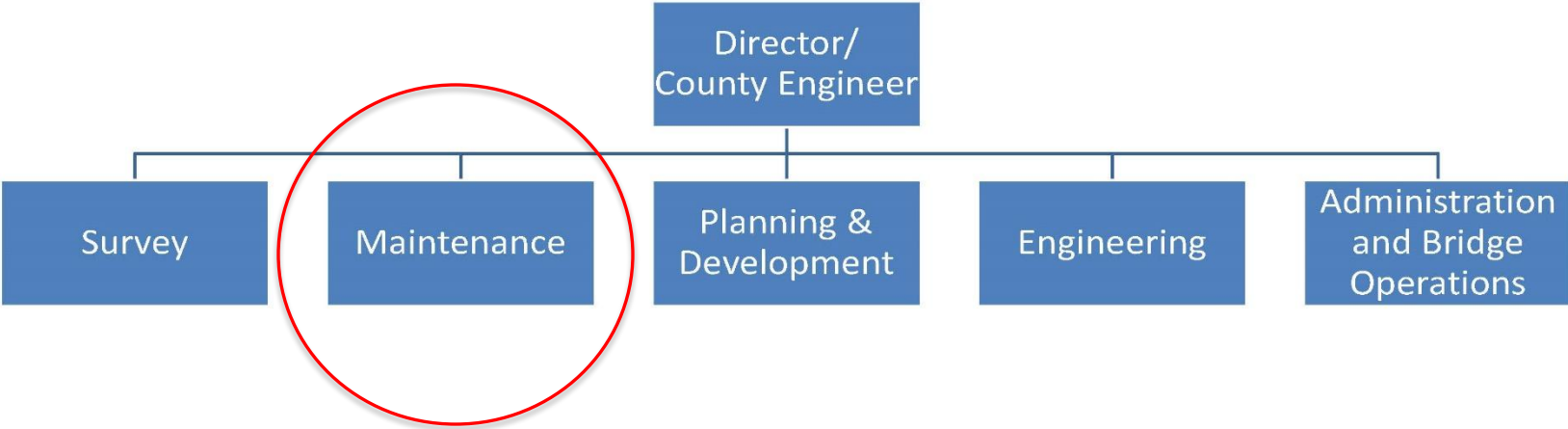
Carl Morgan,  
Bridge Maintenance Supervisor  
Mike Pullen,  
Public Information Officer

Multnomah County  
Transportation

# MultCo Transportation Sections



Multnomah County Transportation Division Organization and Responsibilities  
Fiscal Year 2022



# Multnomah County Transportation - **Maintenance**

## Maintenance: Road System and Willamette River Bridges



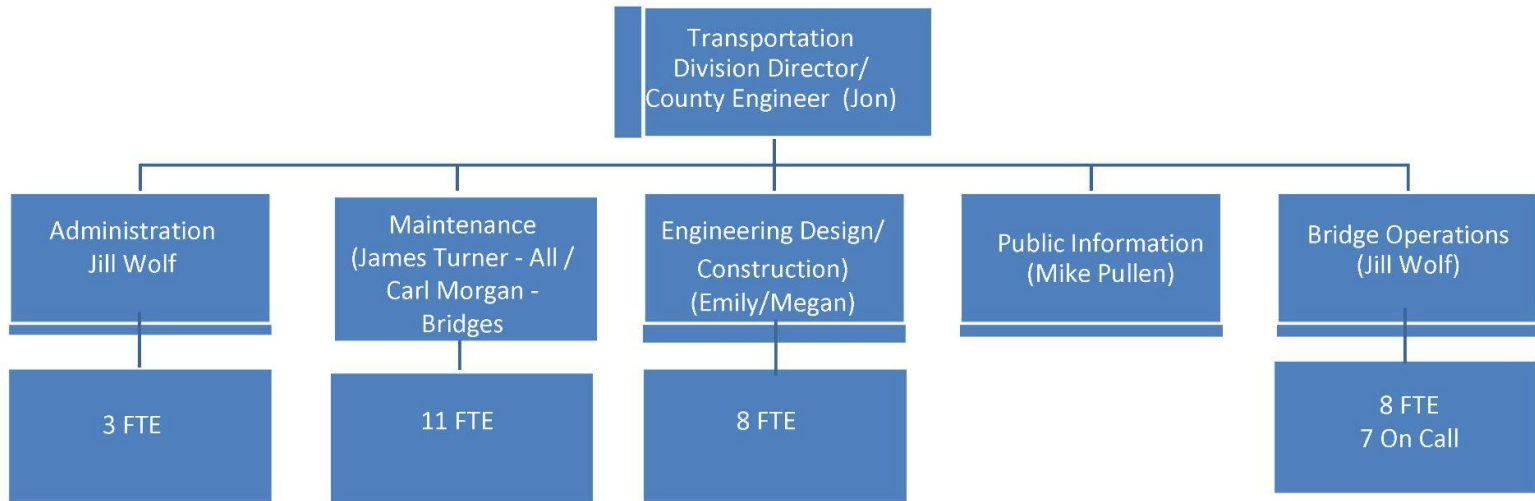
**Funding: Road Fund, Accident Subrogation, Reimbursement for services**



# Bridge Section Organization



Multnomah County Bridge Program Organization Chart



# Willamette River Bridges

We Operate, Preserve, & Maintain

- Sauvie Island Bridge
- Broadway Bridge
- Burnside Bridge
- Morrison Bridge
- Hawthorne Bridge
- Sellwood Bridge



# Other County Bridges

- 22 smaller bridges and viaducts in east county cities, unincorporated east county
- Only one in unincorporated west county (NW Reeder Road on Sauvie Island)



***Stark Street Bridge***



# Bridge Maintenance Services

- Perform preventive maintenance and repairs
- Bridge inspections
- Respond to bridge emergencies
- Support County Roads, other County programs, other agencies



# Budget Notes

- Local funding for Willamette River Bridge maintenance is inflation indexed:
  - \$3.1 million for FY2021-2022
- Local funding for maintaining 22 smaller county bridges is not inflation indexed
  - Funding for smaller bridges competes with road maintenance funding
  - Smaller budget than WRB's





# 2020 Budget Cuts

- Like all County Transportation Division programs, bridge maintenance saw 2020 budget cuts due to decline in gas tax (Covid) and impact of road capital projects
- Cut 2 FTE positions in bridge maintenance (out of 13 FTE)



# Work that impacts bicyclists and pedestrians

- Small capital projects
  - Hawthorne east viaduct sidewalk widening
  - Hawthorne viaduct bus stop widening
  - Hawthorne viaduct bike lane delineators



# Work that impacts bicyclists and pedestrians

- Keeping sidewalks and bike lanes clear
  - Remove trash, leaves, gravel, accident debris
  - Street sweeper for traffic and bike lanes
    - Monthly sweeping by contractor
    - Portland uses mini-sweeper for Burnside bike lanes due to narrow width (curb to candlesticks)
  - Clear sidewalks
  - Wash stairs



A photograph showing the damage to the sidewalk railing on the Broadway Bridge. The railing, which has a decorative lattice pattern, is bent and twisted. Yellow caution tape is strung across the bridge deck behind the railing. The bridge structure is made of dark metal beams. A white pipe runs horizontally across the lower part of the image. The sky is clear and blue.

**Broadway Bridge sidewalk railing after vehicle crash**



**Broadway Bridge  
sidewalk railing  
after repair**

# Work that impacts bicyclists and pedestrians

- Winter weather
  - County plows bridge traffic and most bike lanes with truck plow
  - County plows bridge sidewalks and Burnside bike lanes with gator
  - Response and tools used varies based on type of snow/ice
  - Portland provides backup support





**Removing snow with push  
blower from Morrison Bridge**

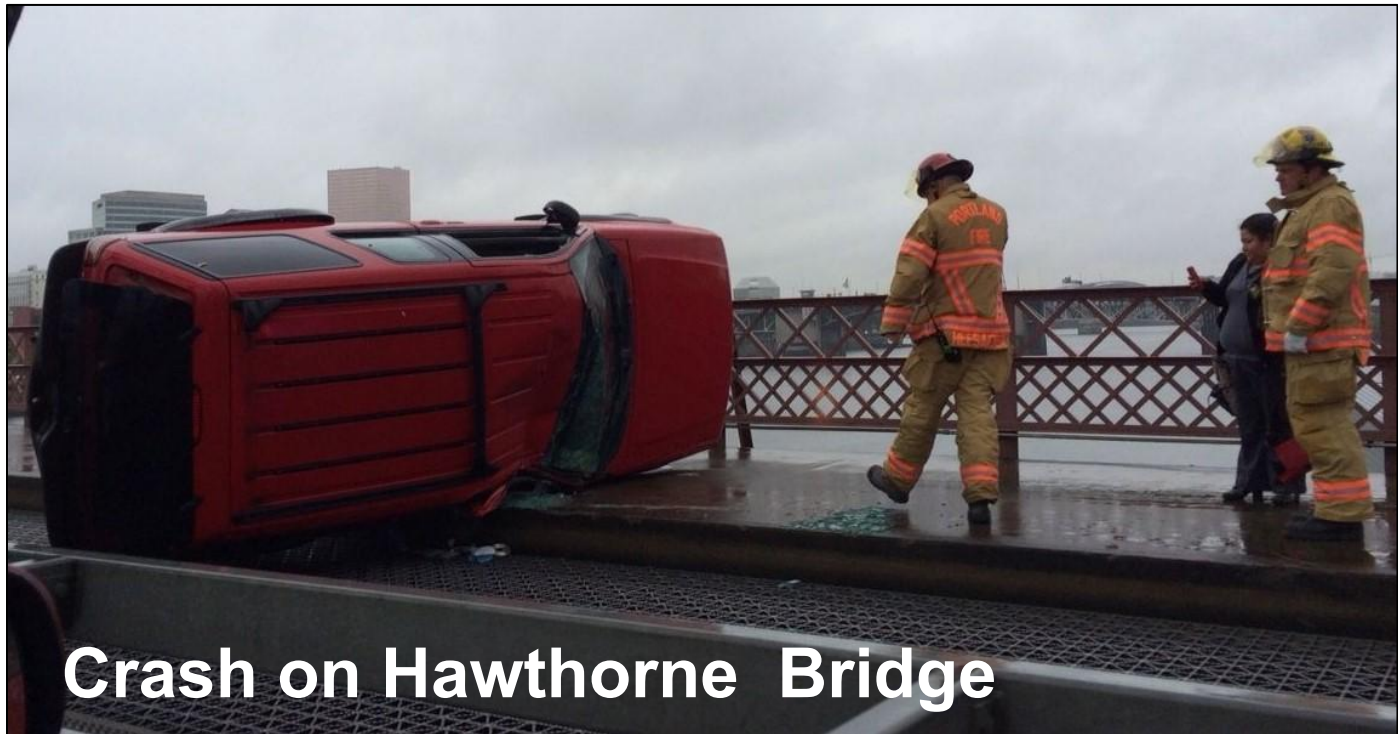
Removing snow from Burnside sidewalk. Bike lanes were on opposite (south) side of bridge during construction.





# Other work that impacts bicyclists and pedestrians

- Graffiti removal
- Accident clean-up



**Crash on Hawthorne Bridge**



A photograph of a newly resurfaced shared path on the east viaduct of the Hawthorne Bridge. The path is paved with dark asphalt and features a large, rectangular yellow tactile paving mat in the foreground. To the left, a white maintenance truck is parked, and a worker in an orange safety vest is visible. A grey trash bin sits on the asphalt. To the right, a metal railing runs along the edge of the viaduct. In the background, a street sign and a stop sign are visible. The scene is brightly lit, suggesting a sunny day.

**Resurfaced Hawthorne  
Bridge shared path on  
east viaduct**



# Special projects

Replacing the  
downhaul  
cables on  
Hawthorne  
drawbridge  
(summer 2021)

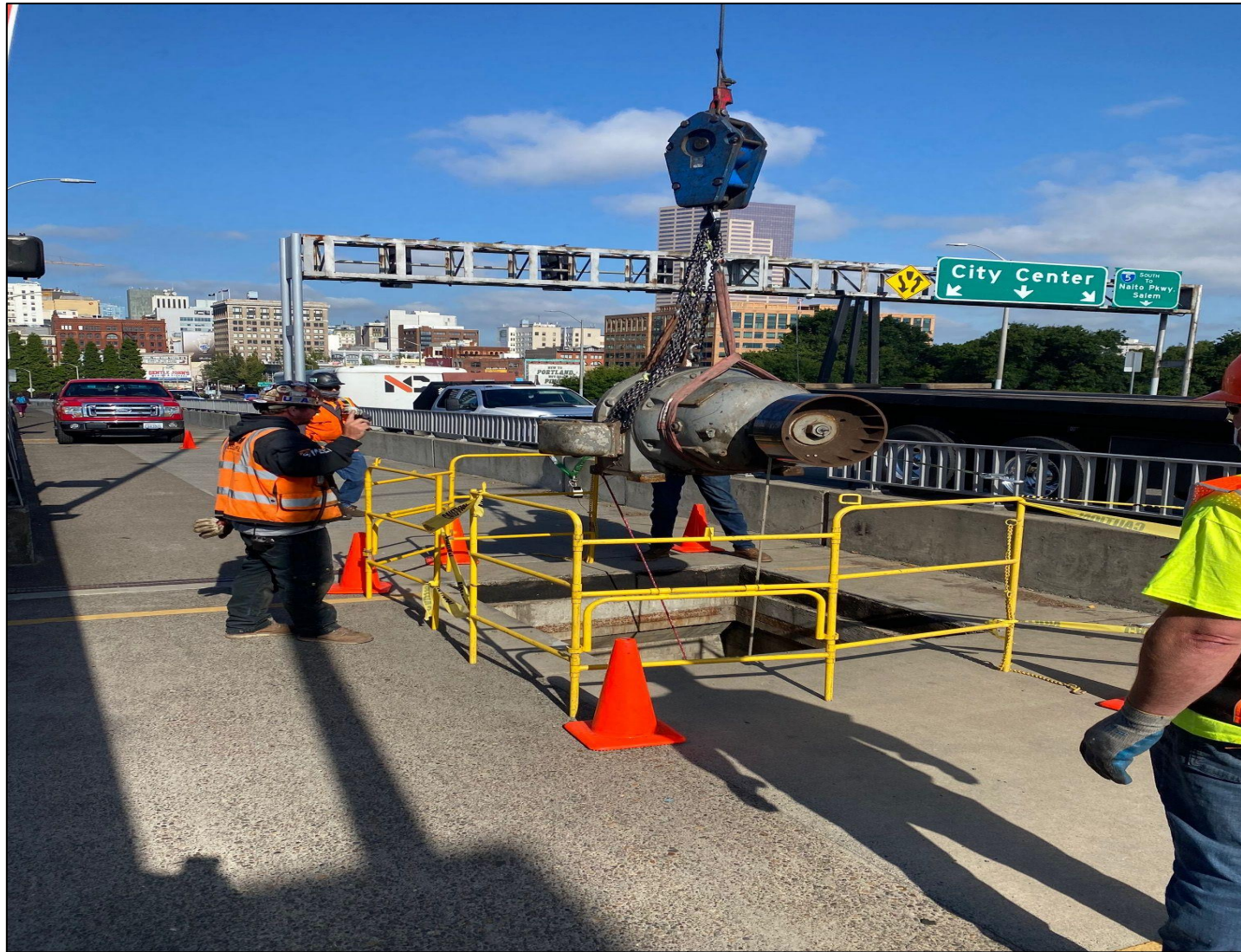




Loading in material for  
downhaul cables



Removing  
original  
drawbridge  
motor from  
Morrison  
Bridge.





**A.H. FRANCIS  
BUILDING-1854**



HERE, IN ONE OF THE CITY'S FIRST BRICK BUILDINGS, ABRAHAM HUNT FRANCIS AND HIS BROTHERS ISAAC CREATED A THRIVING CLOTHING BUSINESS. EDUCATED FREE BLACKS WHO SETTLED IN OREGON OPPOSITE THE TERRITORY'S 1849 BLACK EXCLUSION LAWS, WHICH IS WHY THE FRANCIS BROTHERS WERE OBLIGED TO LEAVE, U.S. REPRESENTATIVE PORTLANDERS PETITIONED SUCCESSFULLY AGAINST THEIR REMOVAL.

A. H. FRANCIS (1810-1877) AND HIS WIFE SYDNEY FRANCIS (1815-1889) WERE LEADING ANTI-SLAVERY ACTIVISTS. THEY COINED PHRASES SUCH AS "A.S. BROTHERS" AND "NORTH STAR" NEWSPAPER. WHILE LIVING IN PORTLAND, THEY CONTINUED TO FURTHER ABOLITION AND SOCIAL WORKS FOR ALL CITIZENS.

ISAAC FRANCIS DIED IN 1851. IN 1862 ABRAHAM, SYDNEY, AND THEIR DAUGHTER, THEODORE, LEFT PORTLAND TO JOIN SYDNEY'S PARENTS IN VICTORIA, B.C.

LANG BYNE SOCIETY 2021

**New historic plaque on Morrison Bridge honoring site of one of Oregon's first African American owned businesses**

# Questions and Comments?

