



Community Connector Transit Study

April 2025

What are the milestones?

Context & Framework

Understand regional context and best practices, reconsider the future and establish a guiding framework.

Spring
2025



Assessment & Vision

Assess network needs and opportunities. Re-envision the future local transit network and explore adding connected mobility hubs.

Summer
2025



Priorities & Tools

Prioritize regional investment opportunities based on the policy framework. Develop the strategy and supporting tools and strategic partner actions to support the vision.

Fall
2025



Actions & Report

Describe the local transit context, opportunities and vision and outline actions partners can take to support and expand local transit service.

Spring
2026



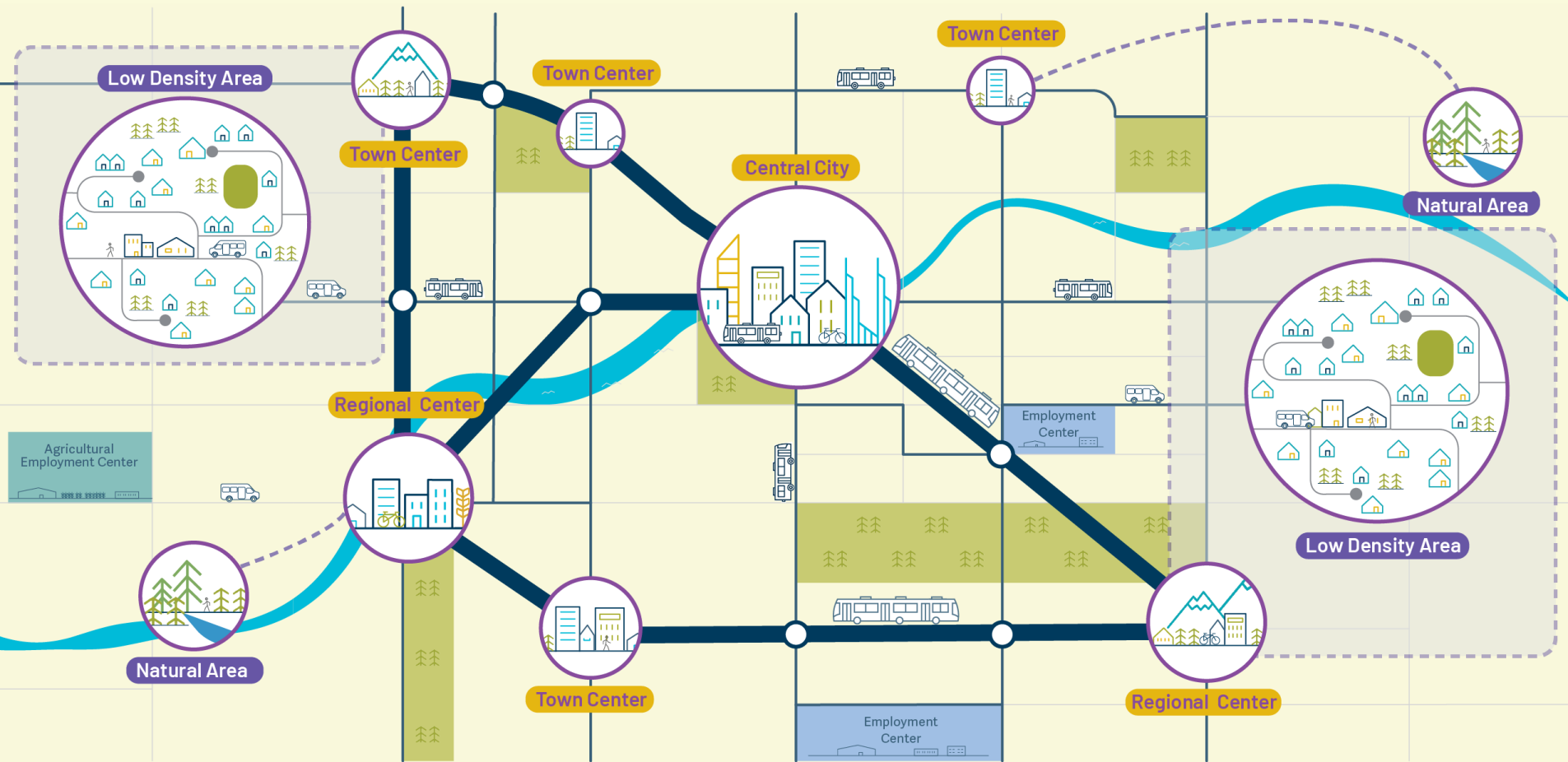
Identifying current gaps and needs



- Mobility in **low density areas** (*neighborhoods, local places*)



- Access to **jobs**
- Access to major **outdoor recreation areas**
- Mobility by time-of-day



Defining its role in meeting our goals

Reconsidering the network vision

- Transit center
- Major bus stop
- Bus station
- Intercity rail terminal
- Air terminal
- Inter-city passenger rail
- Future high speed rail
- Light rail
- Commuter rail
- Streetcar
- High capacity transit rapid bus
- Better bus corridor
- Frequent bus
- Regional bus
- Planned High capacity transit
- Bus transit outside UGB
- Community job connector
- Station community
- Urban center
- Industrial area
- Employment area
- County boundary
- Urban growth boundary
- Metropolitan planning area

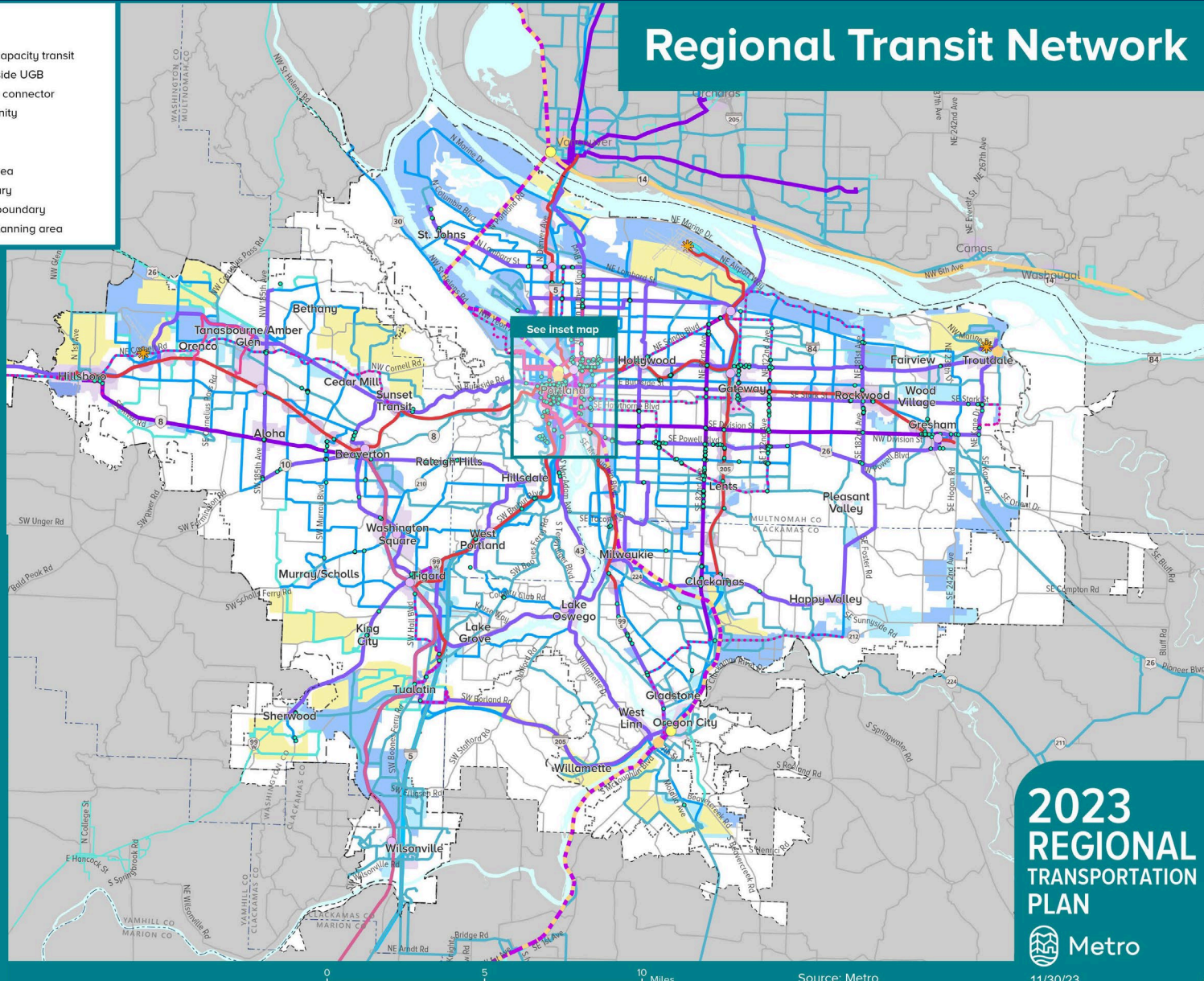
Regional Transit Network

Opportunity
categories

Current

Temporary

Future



Identifying opportunities based in goals

Where are the needs and the gaps?

What gap areas are transit-supportive?

What do other resources tell us about markets?

Mobility, Equity and Climate

Equity, Economy and Safety

Mobility, Equity, Economy and Climate



Distance from transit service



Key community destinations



Medium-density zoning



Population and land use character



Equity Focus Areas



Major employer sites



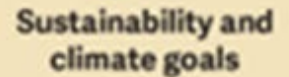
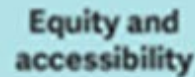
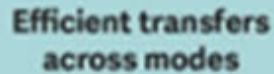
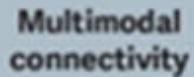
Local and regional plans



Partner and community feedback



Travel demand



Portland Transit Mall

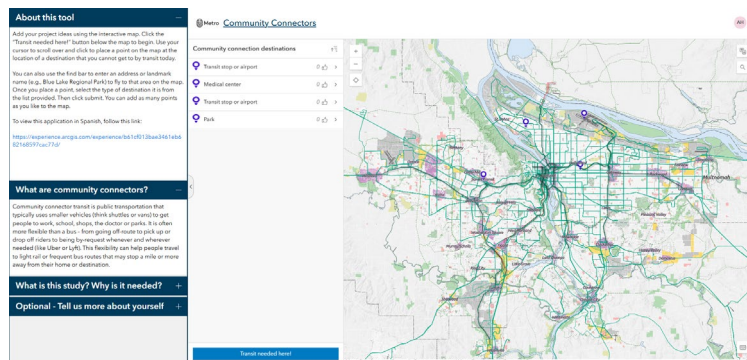
Orenco Station

Beaverton Transit Center

Tualatin Park & Ride



Engaging Partners and Community



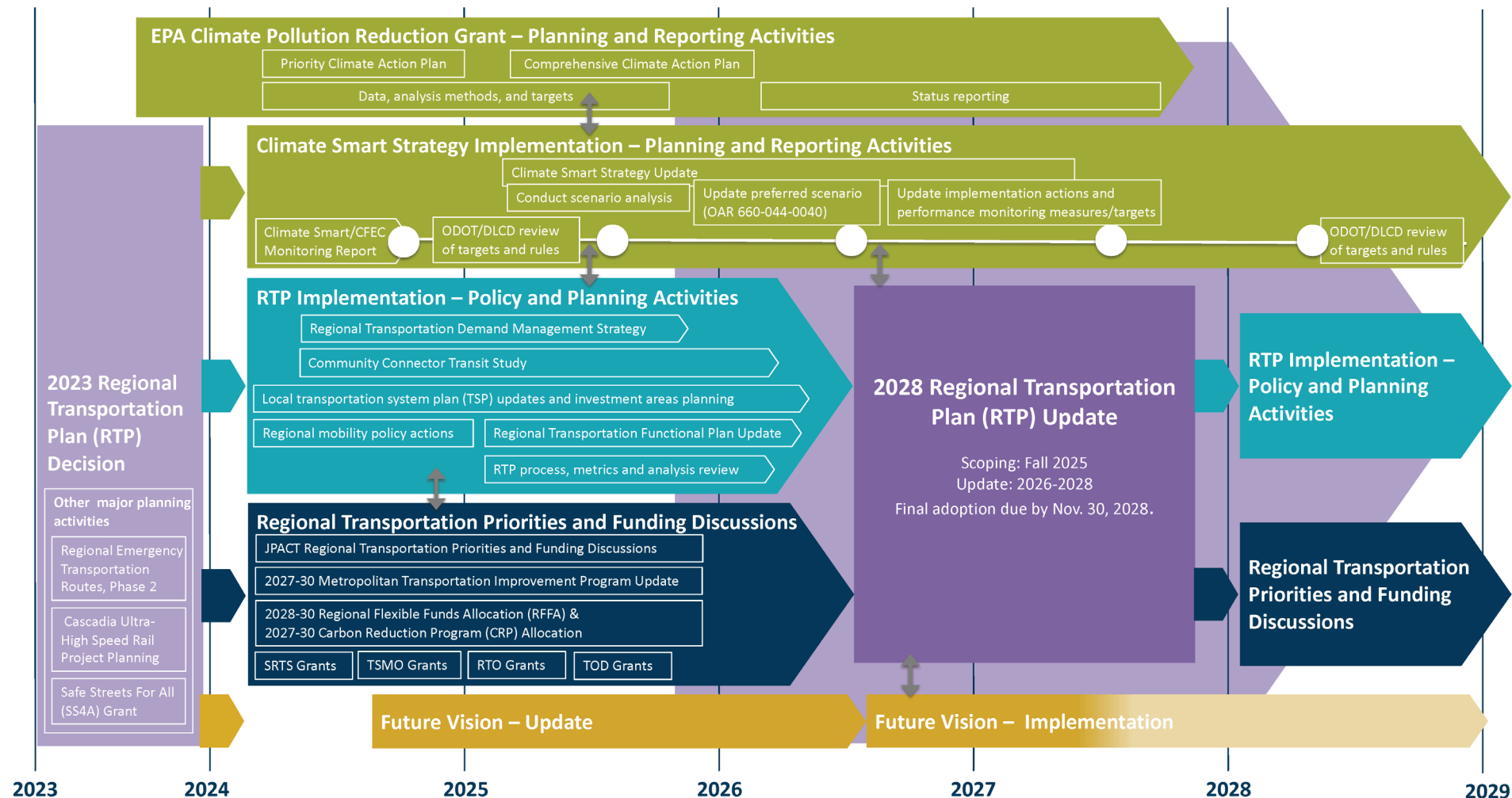
Who?

- Community organizations & members
- Groups: youth, affordable housing, schools, health agencies, parks
- Tribal organizations & members
- Major employer & business chambers
- State, Regional, Local and Transit Agency Partners

How?

- Public Survey
- Event tabling
- Gatherings
- Meeting presentations
- Direct noticing and flyering
- Working group and workshop
- Metro and County committees

2023-28 Coordinated timeline of RTP implementation and climate action planning



RTP implementation actions

Ally Holmqvist,
Senior Transportation Planner
Ally.Holmqvist@oregonmetro.gov

oregonmetro.gov
/community-connector-transit-study

