



EAST MULTNOMAH COUNTY (EMC) ROADMAP

Presented by the EMC Coalition Partners

OVERVIEW

Port of Portland

Building **shared prosperity** for the region through travel, trade, and economic development

- Three airports – PDX, Hillsboro (**HIO**), Troutdale (**TTD**)
- Three active marine terminals – T4, T5, T6
- Columbia River dredging
- Six business parks, including:
 - Mass Timber & Housing Innovation Campus (**MTHIC**) at T2
 - Troutdale Reynolds Industrial Park (**TRIP**)
 - Gresham Vista Business Park (**GVBP**)

Two Business Lines

- Aviation
- Trade and Economic Development



HISTORY

Our East County Story

Chapter 1 Invested in growth 1940 – 2000

- Acquired **Troutdale Airport**
- Supported local communities with growth and connections
- Partnered with others to support general aviation activities
- Trained and developed aerospace and aeronautical community

Chapter 2 Reimagined our role 2000 – 2020

- Assets beyond aviation and marine
- **Troutdale Reynolds Industrial Park**
- **Gresham Vista Business Park**
- Developed new connections with industry, government, and others
- Environmental stewardship

Chapter 3 Shared prosperity **Now**

- **Investments with intention**
- Aware of our responsibilities
- Not just places; people too
- Leading w/qualitative community assets, reports and analysis
- **East County Strategy**

Purpose

Establish a **roadmap** for inclusive economic development investments in East Multnomah County (EMC)

Success will be measured by:

- Prioritizing community-based economic outcomes
- Community, intergovernmental and local stakeholders see their priorities in the process
- Collectively move toward a more inclusive business model for small- to large-scale industries

Port's role

- Coalition convener and project sponsor
- Roadmap to be “owned” by everyone



3-Year Workplan

Discovery

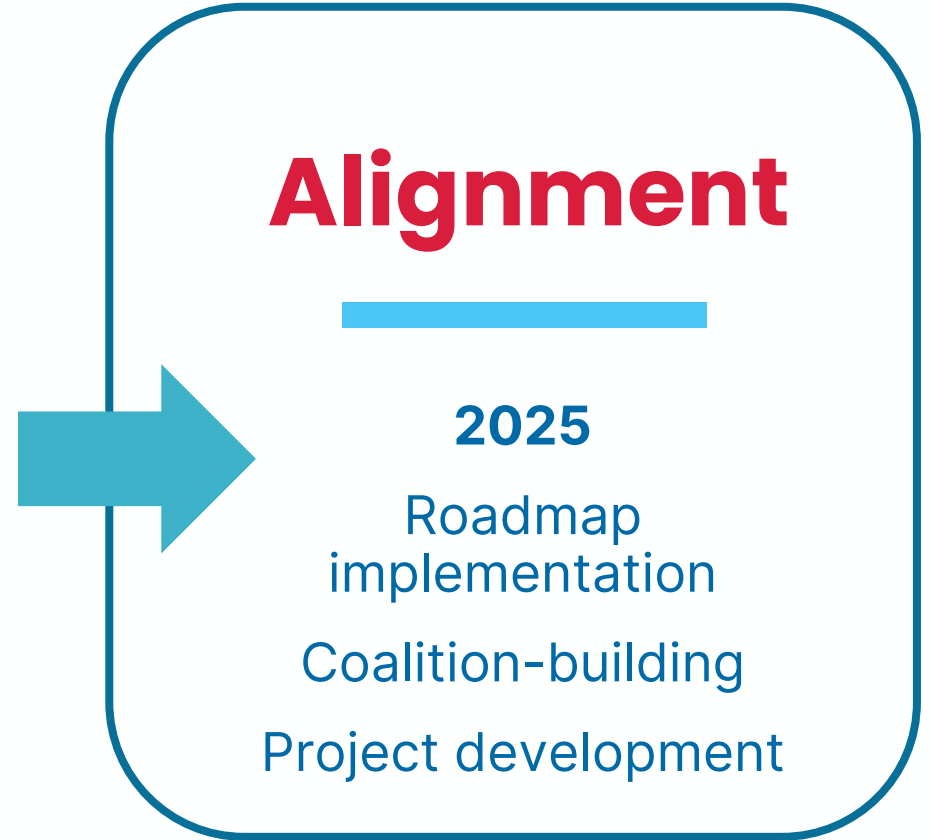


2023

Engagement

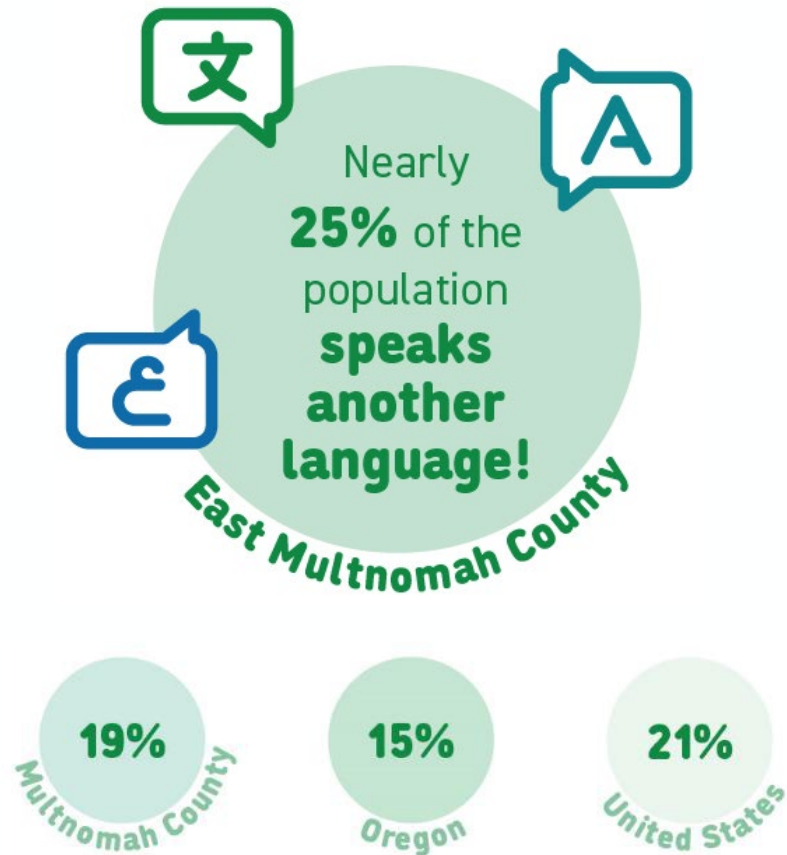


2024

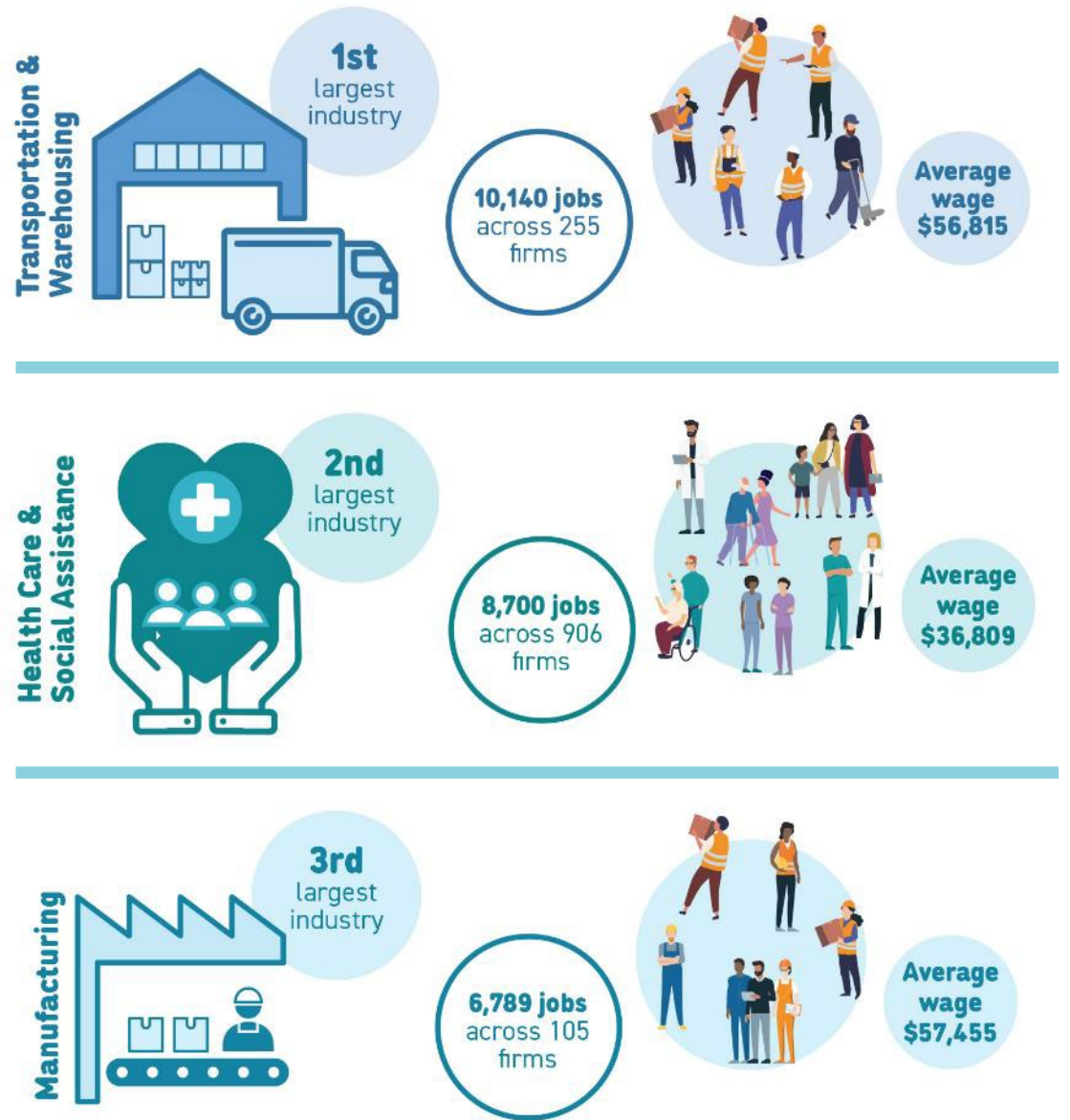


EAST COUNTY STRATEGY

EMC Today

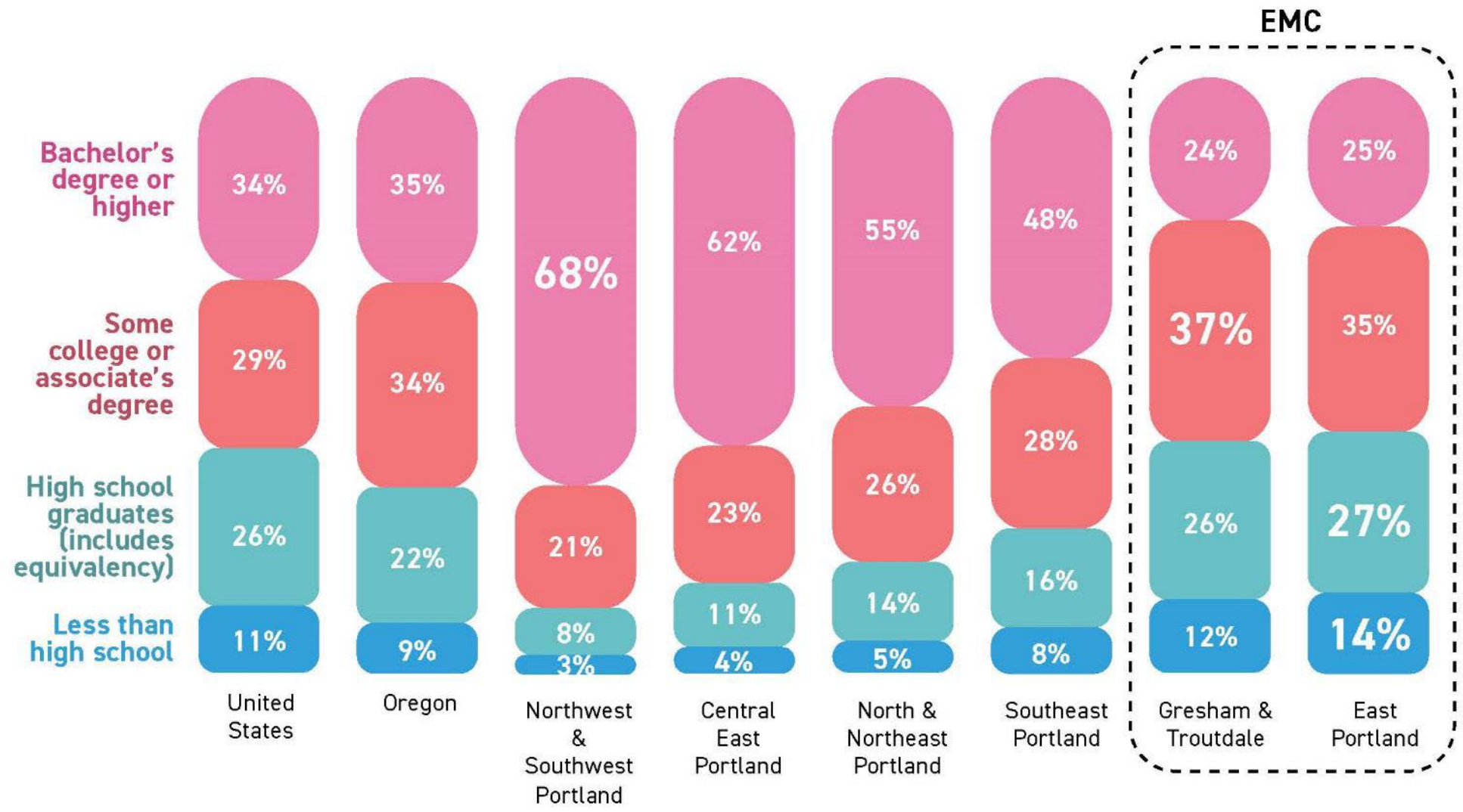


Diverse and Growing



Industry Strengths

EMC Today (continued)



EMC Today (continued)



Foundational
Assets



Strong
Collaboration

Key Findings

1 Education and training builds talent and income growth

2 Transportation investments impact access to opportunities

3 Proactive retention and recruitment can help alleviate business growth challenges

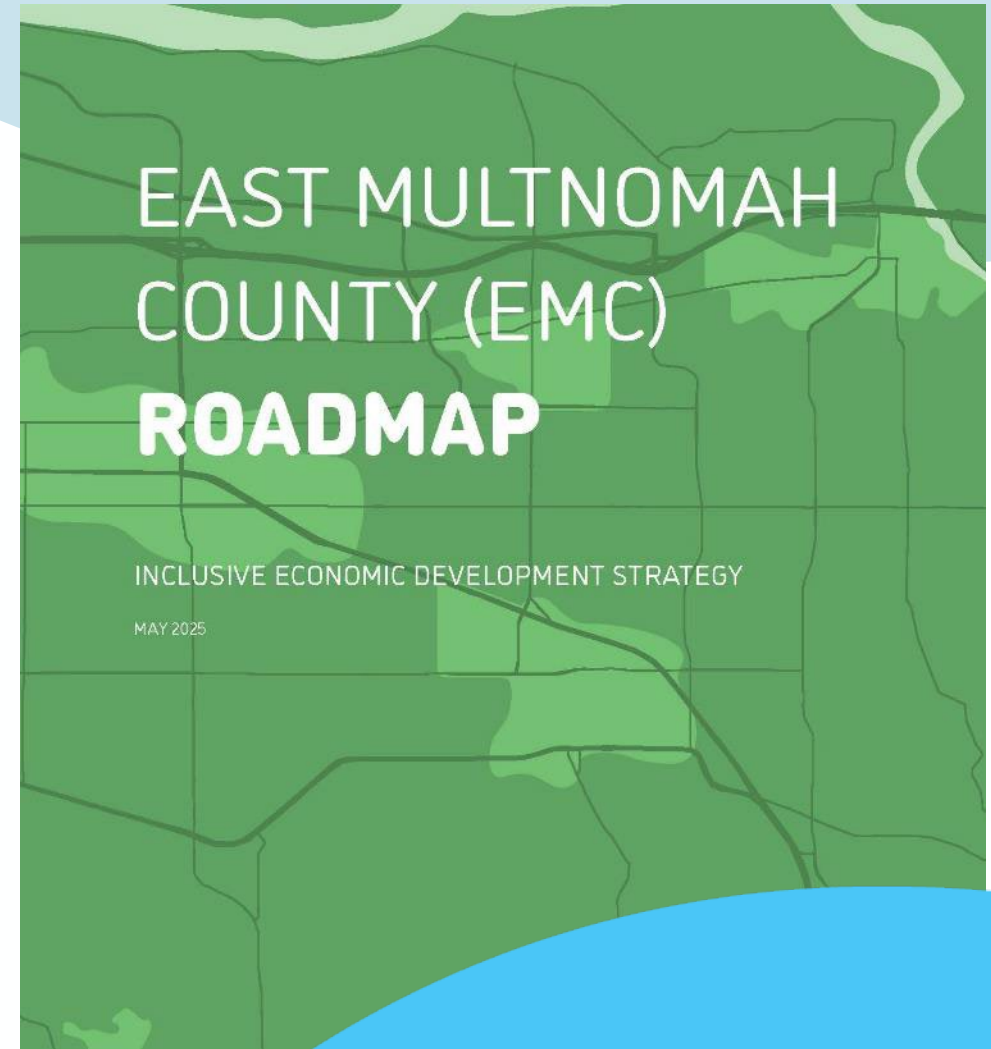
4 Offering technical support can foster wealth through small business growth

5 Inclusive growth requires collaboration through **accessible resources**

6 Diversifying industries strengthens the local economy

EMC Vision

East Multnomah County (EMC) is a thriving **global economic district** that celebrates its diverse community and fosters inclusive and sustainable business growth by integrating educational, governmental, civic, and infrastructure assets.



EMC Coalition

Moving EMC Roadmap findings and recommendations into **action** through advising and supporting priority projects

Representatives from:

- Oregon Tradeswomen
- Latino Network
- WBTO
- Microchip
- onsemi
- Worksystems Inc.
- Mackenzie Group
- Cultivate Initiatives
- Oregon Community Foundation
- POIC / RAHS
- City of Gresham
- City of Troutdale
- City of Fairview
- City of Wood Village
- Metro
- Multnomah County
- Mt. Hood Comm. College
- Business Oregon
- TriMet



Upcoming Coalition

Meetings:

August 14

November 6

Methodology



Current Priorities

1. Semiconductor / advanced manufacturing workforce program
 - **Mt. Hood Community College** and CTE programs
 - Partnerships with K-12 and industry (Microchip, onsemi)
2. Vance Vision Master Plan
 - **Multnomah County**-owned site; adjacent to quarry sites
 - 190th Ave employment corridor, park expansion, housing
3. GVBP Lot 11 (223rd & Glisan)
 - **Port of Portland** to pursue development partners
 - 7-acre commercial zoned lot (mixed-use opportunities)



Advancing Semiconductors in East Metro

Mt. Hood Community College : Dr. Lisa Skari

Advancing Semiconductors in East Metro Members:

1. Dan Malinaric – Vice President, Microchip Technology
2. Doug Clark – General Manager, Onsemi
3. Kimberly Branam – Chief Trade & Economic Development Officer, Port of Portland
4. Ken Richardson – Superintendent, David Douglas
5. James Owens – Superintendent, Centennial
6. Michael Lopes-Serrao – Superintendent, Parkrose
7. John Koch – Superintendent, Gresham Barlow
8. Derek Fialkiewicz – Superintendent, Corbett
9. Frank Caropelo – Superintendent, Reynolds
10. Aaron Bayer – Superintendent, Oregon Trail
11. Joe McFerrin – President & CEO, Portland Opportunities Industrialization Center
12. Eric Schmidt – City Manager, City of Gresham
13. Ray Young – City Manager, City of Troutdale
14. Nathan George – City Manager, City of Fairview
15. Greg Dirks – City Manager, City of Wood Village
16. Tyler Deems – City Manager, City of Sandy
17. Andrew McGough – Executive Director, Worksystems
18. Lynn Snodgrass – CEO, Gresham Chamber
19. Khrys Jones – Executive Director, Sandy Chamber
20. Brad Ketch – Executive Director, Rockwood CDC
21. Shannon Carney – Advanced Manufacturing Program Manager, Business Oregon
22. Nami Bigos – Deputy Director, Oregon Tradeswomen
23. Asaf Taz Elizalde – Talent Development Manager, Latino Network
24. Ricki Ruiz – Oregon State Representative
25. Zach Hudson, Oregon State Representative
26. Chris Gorsek – Oregon State Senator
27. Daniel Bonham, Oregon State Senator
28. Lew Frederick, Oregon State Senator



Vance Vision: 190th Employment Corridor

Multnomah County : Taylor Steenblock

Vance Park Site



Stark St

Burnside St

Yamhill St

182nd

Existing Park

The Pit

190th

Quarry
(Knife River)

Yeon Building

MAX

Quarry
(Knife River)

Vision Plan



A 190th Employment Corridor

B The Park, the Pit + Slope

C 182nd Corridor Site 1 + 2

Gresham Vista 223rd/Glisan

Port of Portland : Chris Damgen

Gresham Vista 223rd/Glisan

Port of Portland

PURPOSE

Port owned property at Gresham Vista Lot 11 has exciting potential to provide a mix of uses to support the EMC Road Map.

WHAT'S NEXT

- Developer, coalition, and business engagement
- Development feasibility analysis
- Development solicitation

TIMEFRAME

2025-2026

Gresham Vista Lot 11 – Looking East



Grand
Ronde
Site

Fred Meyer

223rd

Fairview Village

onsemi

Gresham Vista Business Park

Glisan St

Gresham Vista Lot 11 – 223rd/Glisan



What's Next

For the EMC Coalition:

- Support / further develop current priority projects
- Consider new / future priority projects
- Regional advocacy and leadership convening
- Take ownership of plan / continue coordination

For the Port of Portland:

- Two-year staff commitment to convene the Coalition
- Secure a development partnership for GVBP Lot 11
- Continue support of other regional partners
- Incorporate EMC Roadmap into our future investments and initiatives in East Multnomah County



Thank you

