

Earthquake Ready Burnside Bridge

Contractor Meet & Greet

**Multnomah County
Department of Community Services
Transportation Division**

April 25th, 2023



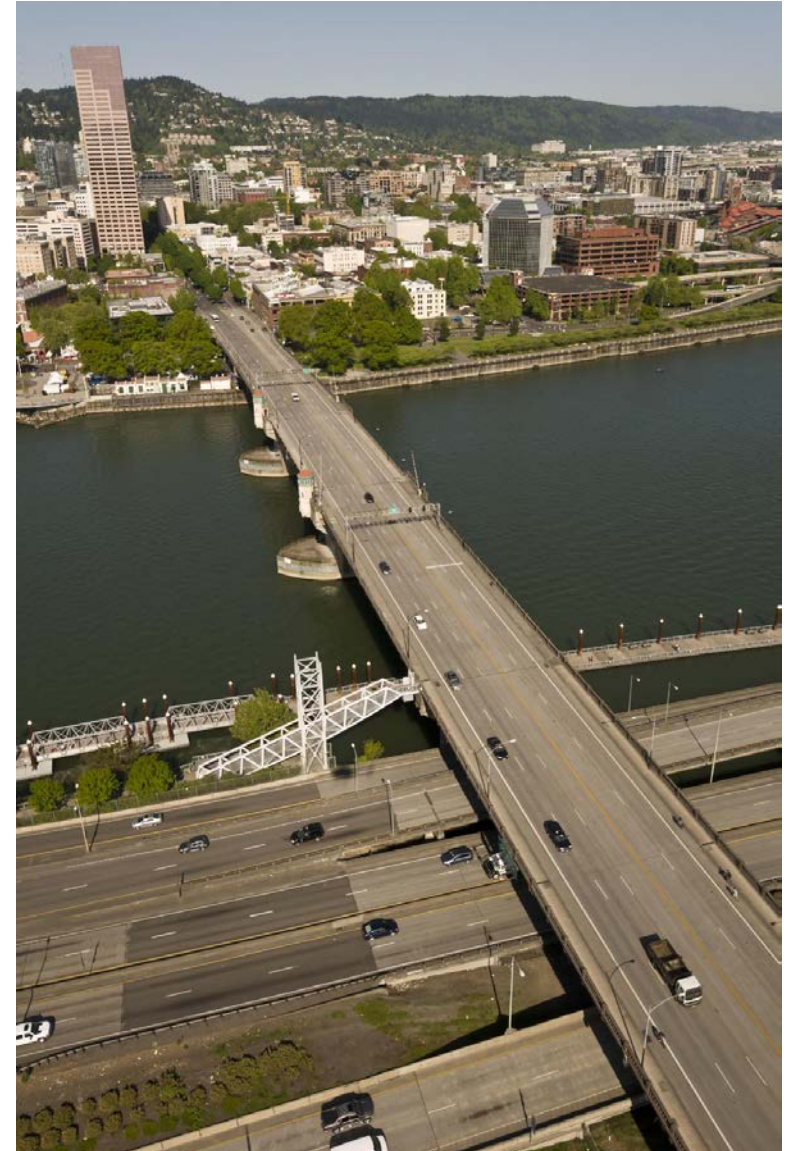
Agenda

1. About the Project
2. Social Equity Overview
3. Contracting Requirements
4. Attendee Introductions
5. Q&A

About the Project

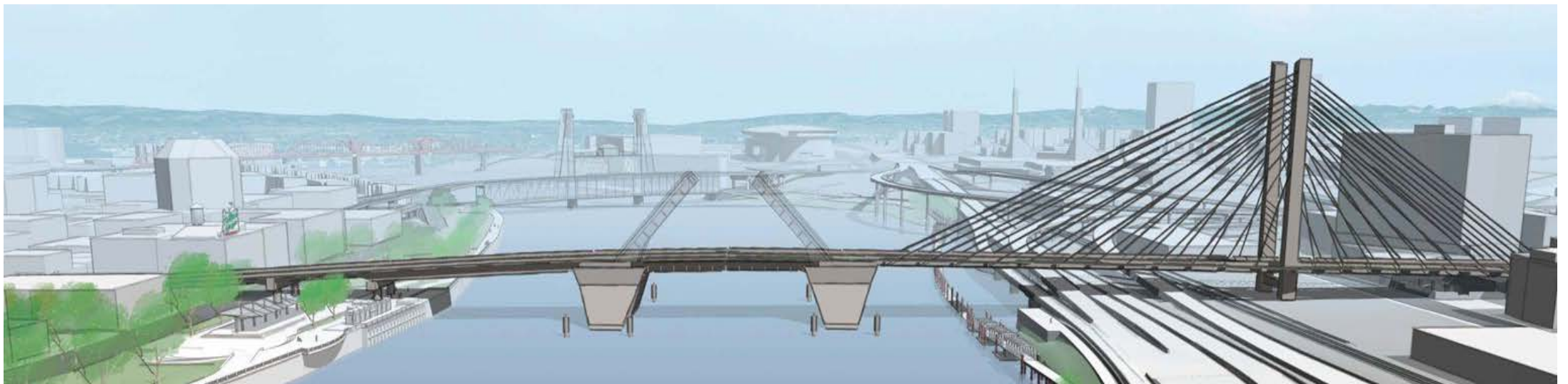
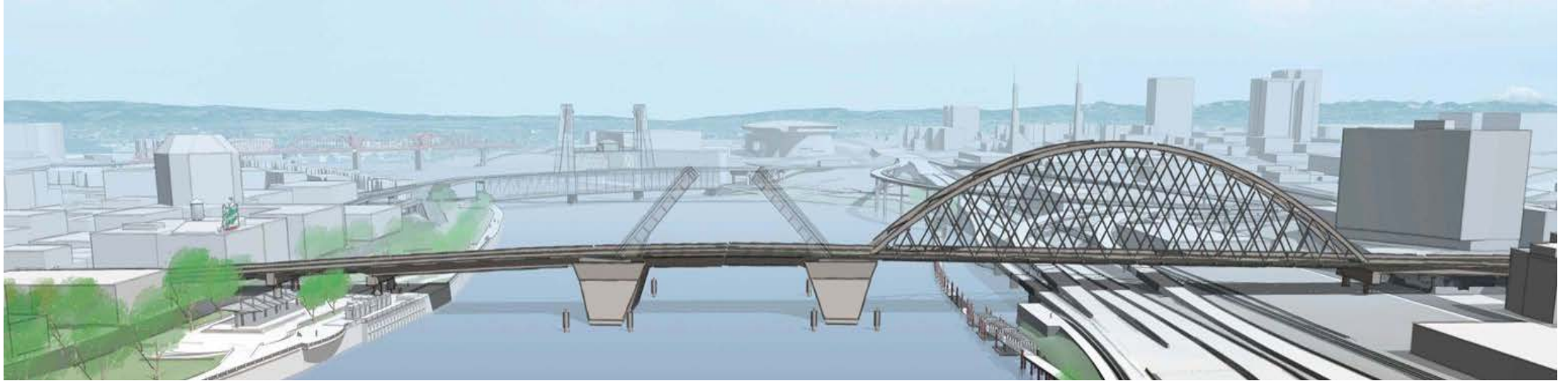
Purpose & Need

- Seismic resiliency and emergency response
- Regional recovery and rebuilding
- Long-term, safe crossing for all users



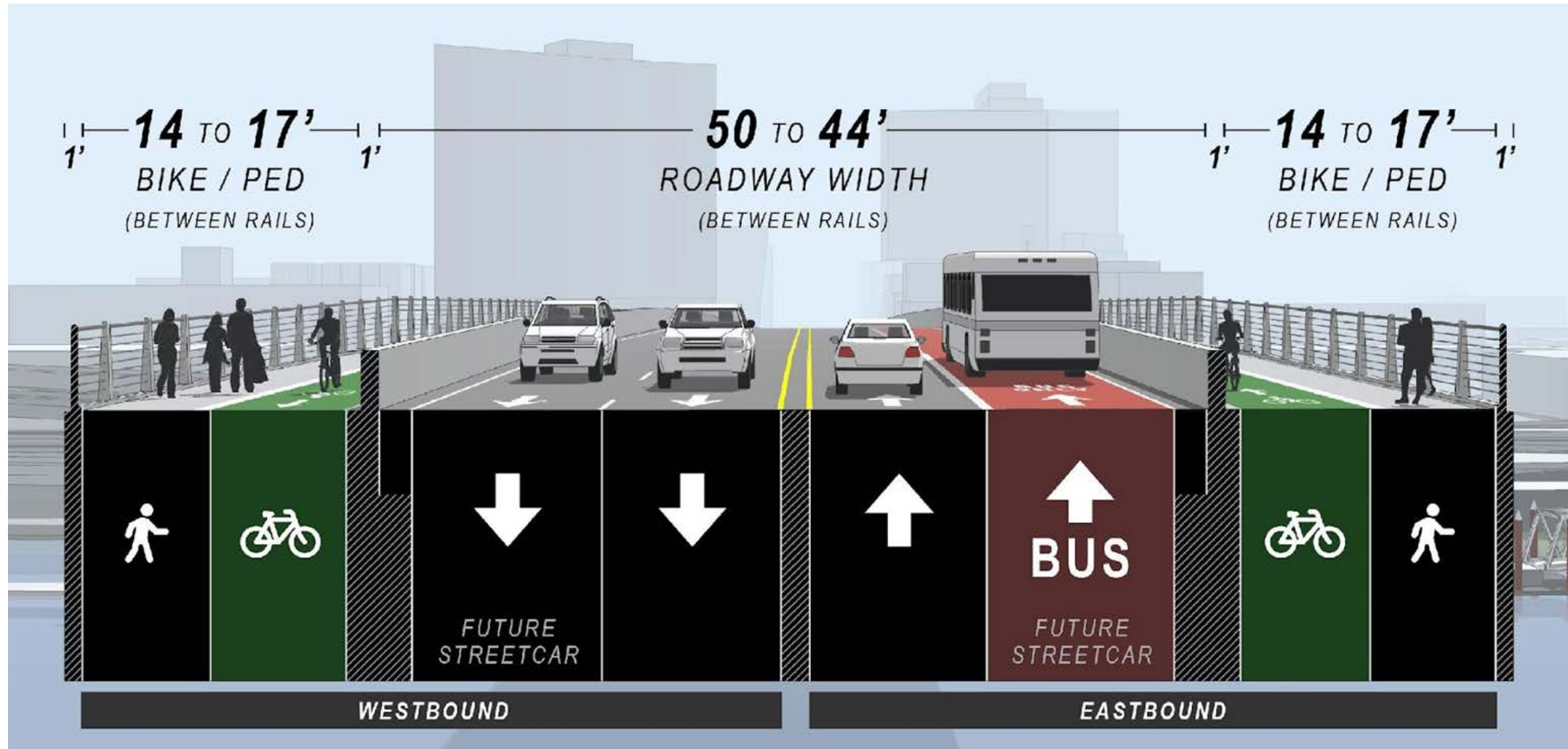
About the Project

Locally Preferred Alternative



About the Project

Typical Cross Section - Improved Multimodal Facilities



About the Project

Delivery Method - CM/GC



Why CM/GC?

- early collaboration
- constructability
- risk mitigation
- innovation
- schedule optimization
- maximize DBE participation

Project Team

- CM/GC Prime Contractor (TBD)
- A&E Design Team (HDR)
- Owner's Representative (DEA)
- Multnomah County
- Agency Partners

About the Project

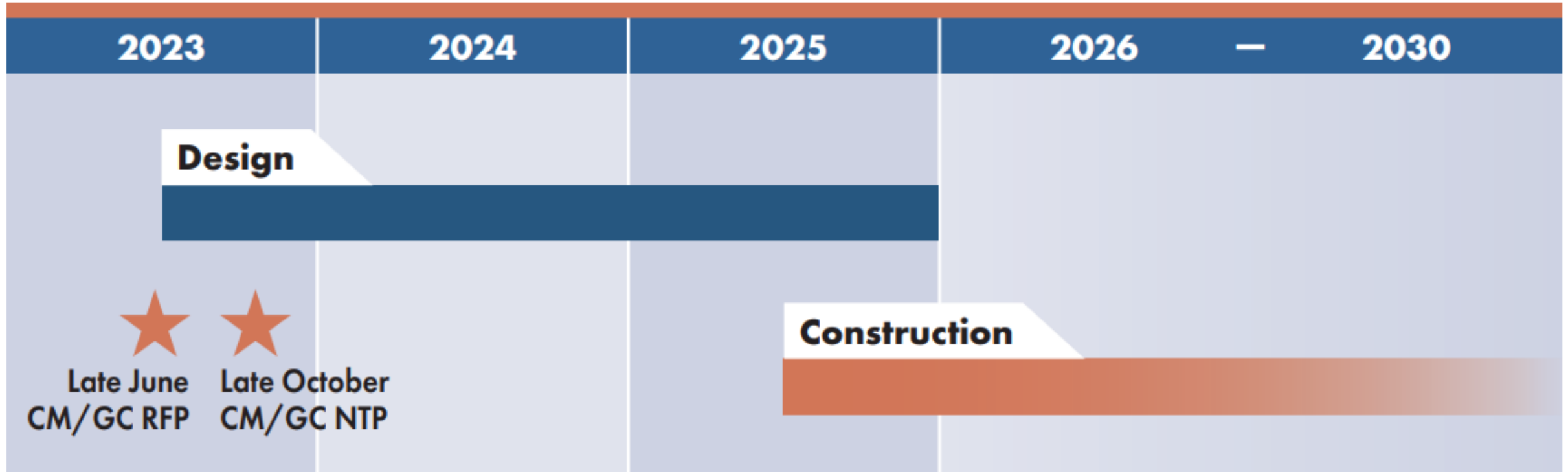
Budget and Funding



- Overall Project Budget - \$895M
 - Estimated GMP - \$550 to \$600M
 - Includes pre-construction services, EWAs and final GMP
- Funded through the design phase
 - County VRF
 - **\$7M in federal funds (RAISE Grant)**
- Seeking additional funding for construction

About the Project

Project Schedule



Social Equity Overview

The County is committed to providing opportunities for DMWESB participation on County public works contracts.

*DBE – Disadvantaged Business Enterprise

MBE – Minority-owned Business Enterprise

WBE – Women-owned Business Enterprise

ESB – Emerging Small Business

Social Equity Overview

DMWESB Certification

- If you *are not* certified, **start the process now**, it can take several months
- Visit the State COBID site for resources and how to apply:

www.oregon.gov/biz/programs/COBID

Contracting Requirements

- DBE Goals
- Workforce Diversity Aspirational Targets
- Acceptable Worksite Program
- OJT/Apprenticeship
- Project Labor Agreement
- Subcontracting



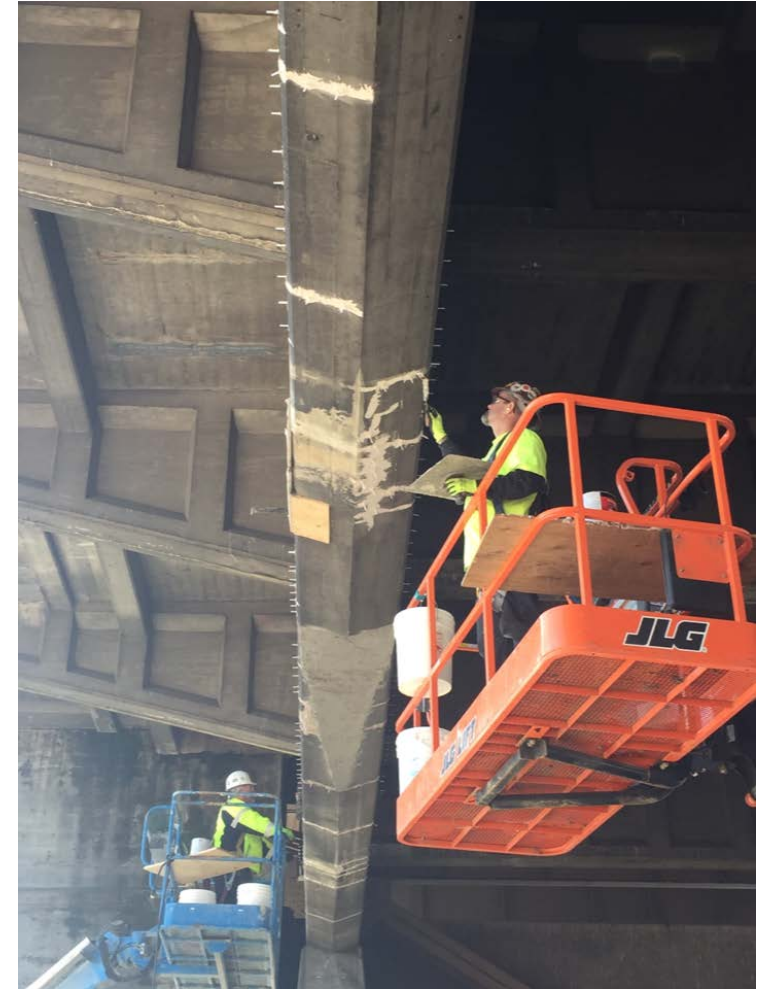
Contracting Requirements

DBE Contracting

DBE Range 15% to 21%

- Goal for each package will be established prior to execution of each of the EWAs and GMP

County will encourage COBID participation to the maximum extent possible.



Contracting Requirements

Workforce Diversity

Diversity

- Aspirational Targets
 - 25% minority
 - 14% women

Local Hiring Priority

- 20% of all labor hours from priority zip codes



Contracting Requirements

Acceptable Worksite Program

- Training for site leadership
- Mandatory onboarding
 - Incident reporting
 - Behavior expectations
 - Consequences for harmful behavior
 - Expectations for site leadership response
- Reinforces positive jobsite culture
- Required for CM/GC and all subcontractors

Contracting Requirements

OJT/Apprenticeship

- 20% of all labor hours by each apprenticeable craft
- Must not exceed applicable ratios
- Applies to Prime and subs with contracts over \$100k and 300 project hours
- BOLI approved training programs
- LDs for failure to meet apprenticeship hours

Contracting Requirements

Project Labor Agreement

The EQRB Project Labor Agreement includes:

- **Equitable Business Practices** - upholds business practices rooted in environmental sustainability, livable wages, and shared prosperity and inclusion
- **Local hiring preferences** - 3,400 job-years are expected to be filled by people within the tri-county area
- **Workforce equity and diversity requirements** - incorporates hiring practices, on-the-job training and apprenticeships, and other aspirational goals to help facilitate the entry and retention of historically disadvantaged or underrepresented people interested in careers in the construction industry

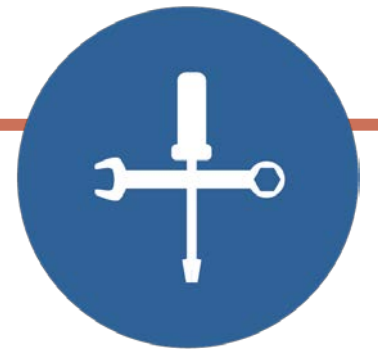
Contracting Requirements

Subcontracting



- Prime must self-perform a minimum of 30% of the work and maximum 70%
- CM/GC to develop Subcontracting and Diversity Plan
 - recommended work packages
 - subcontracting methods
 - DBE opportunities
- CM/GC proposers may not have exclusive right to the services of a subcontractor

Subcontracting Opportunities



- Trucking
- Earthwork
- Demolition
- Concrete
- Reinforcement
- Temporary Traffic Control
- Asphalt
- Traffic Signals
- Illumination
- Stormwater/Drainage Facilities
- Mechanical/Electrical/Plumbing
- Erosion Control
- Retaining Walls
- Machinery
- Site Preparation
- Site Security
- Project Offices and Trailers
- Temporary Fencing
- Third Party Quality Control Testing
- Survey
- Street Sweeping

Introductions



- Round robin introductions
- Please introduce organization/firm, followed by your firm's specialty/interest

Q&A



Thank You!

