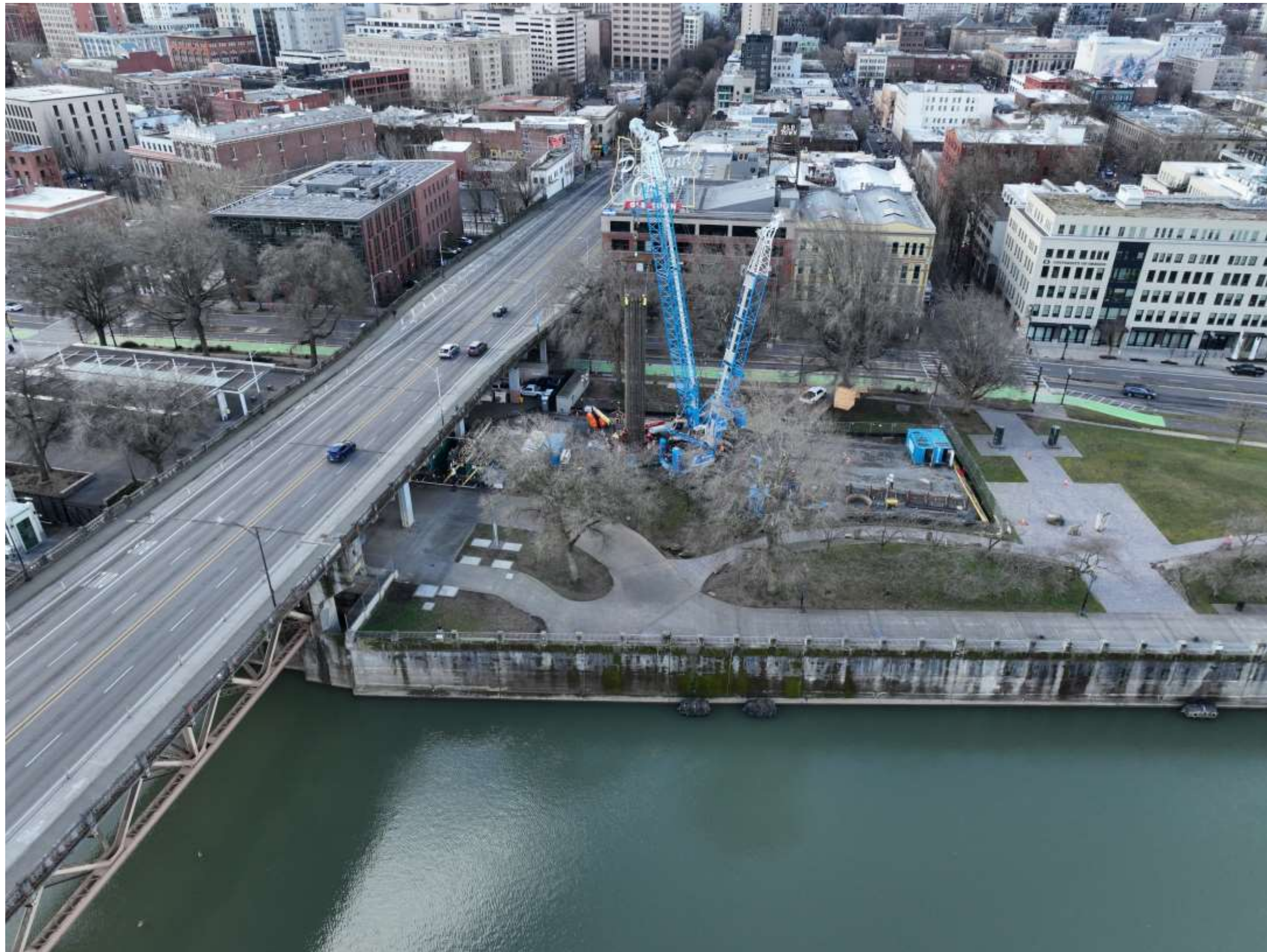


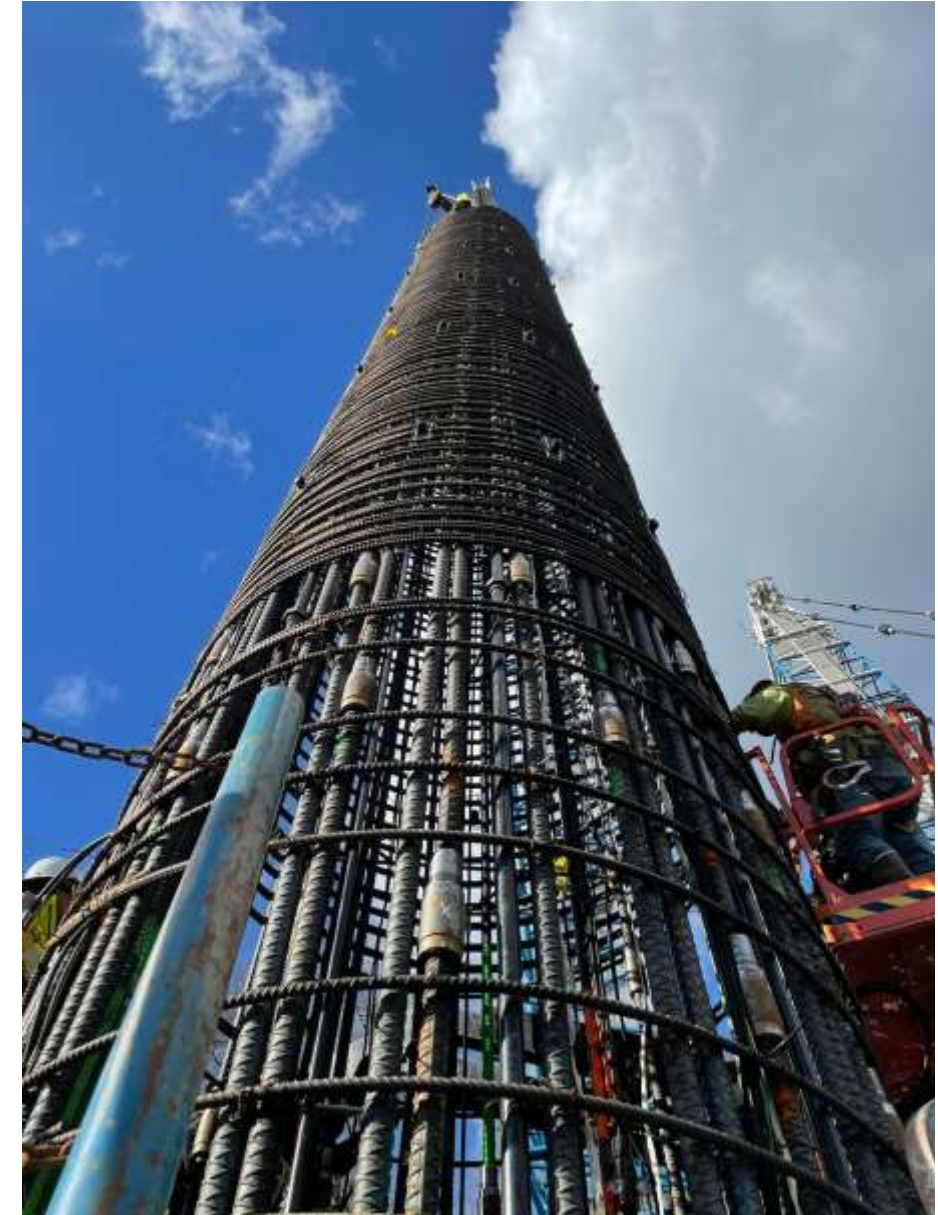
What's going on over at the Burnside Bridge?



Test Shaft

Transportation All-Staff – 2/18/2024

Project Summary – Design



- Test Drilled Shaft → Similar Design of Production Shafts on the New Bridge
 - Shaft – 10 ft diameter, ~125 ft below ground surface

Project Summary – Location

- Shaft Location / Proximity → Selected Site Represents Soils Layering We'll Encounter in Construction
 - NW side of Burnside Bridge along Waterfront Park; Geotechnical Borings Completed Early 2024

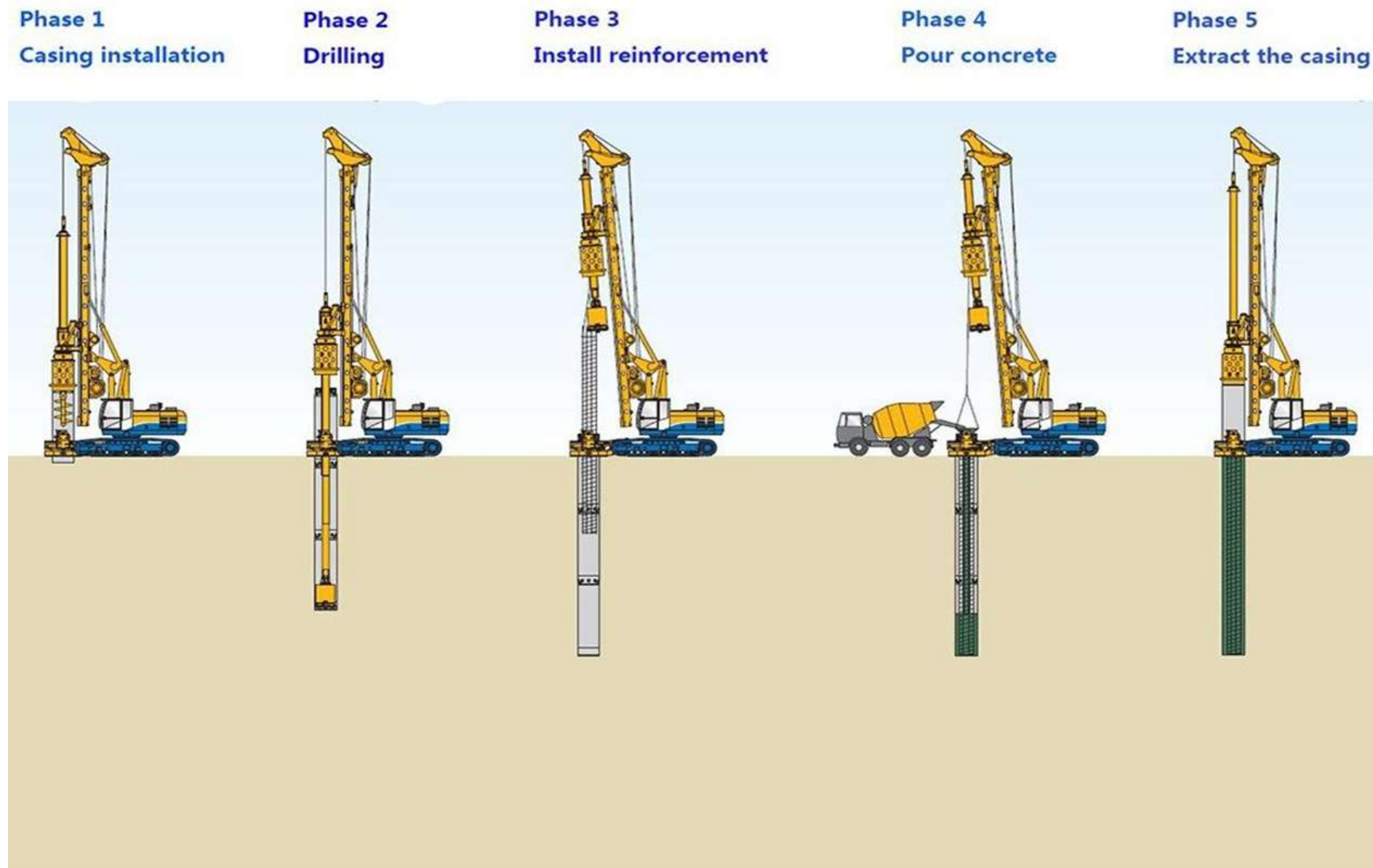


Project Summary – Testing

- Testing / Data Collection → Series of tests about surrounding soil resistance capacities
 - Thermal, Sonic Wave, and Load Cell Tests



Project Summary – Construction



- Constructability → Test Shaft Will Confirm Construction Practices Implemented By The Contractor
 - A Sacrificial Shaft Allows for Refinement in Design, Drilling, Equipment & Materials

Test Shaft – Early Activities



Test Shaft – Constructing the Cage



Test Shaft – Constructing the Cage



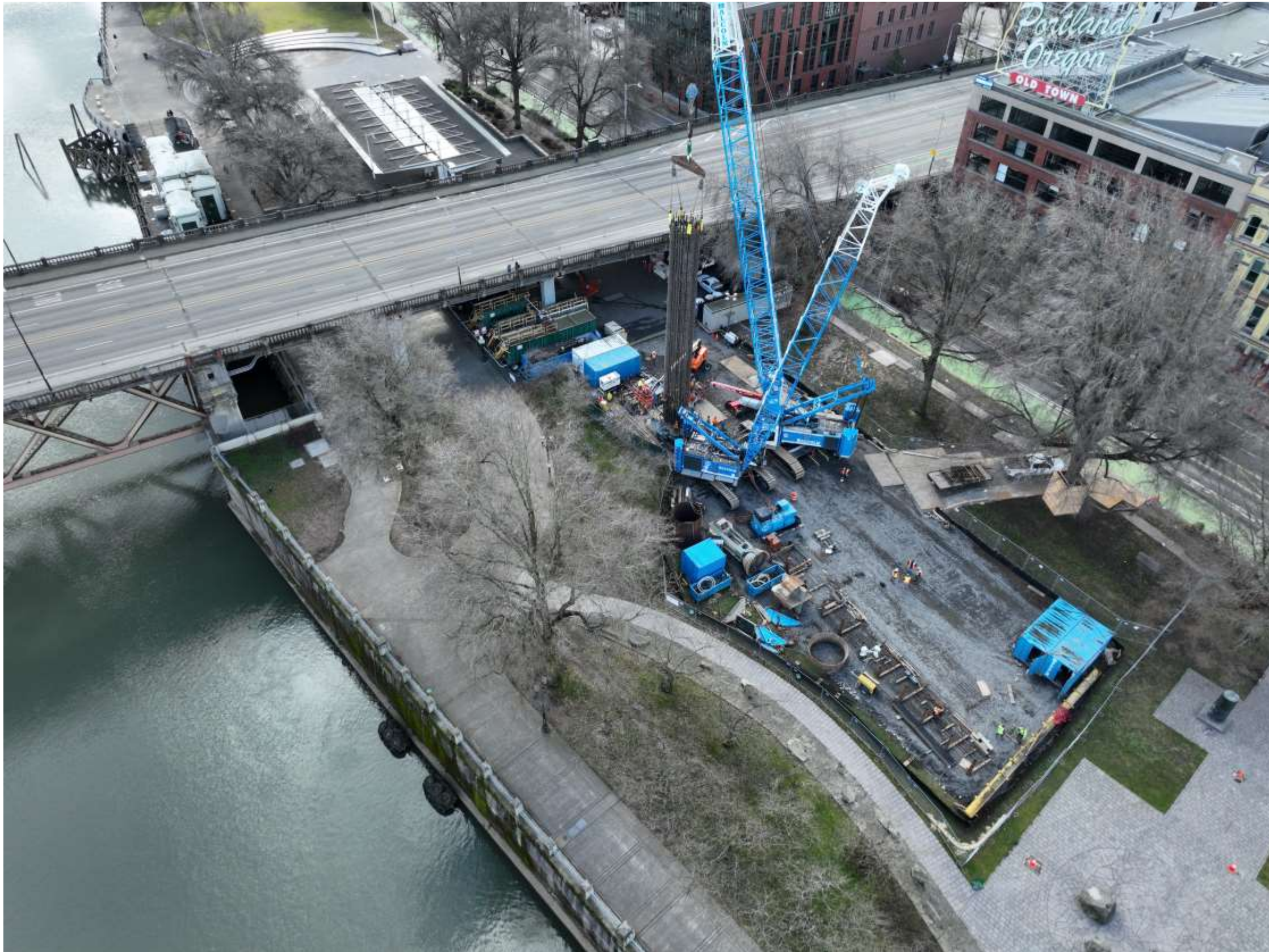
Test Shaft – Preparation for Drilling/Concrete



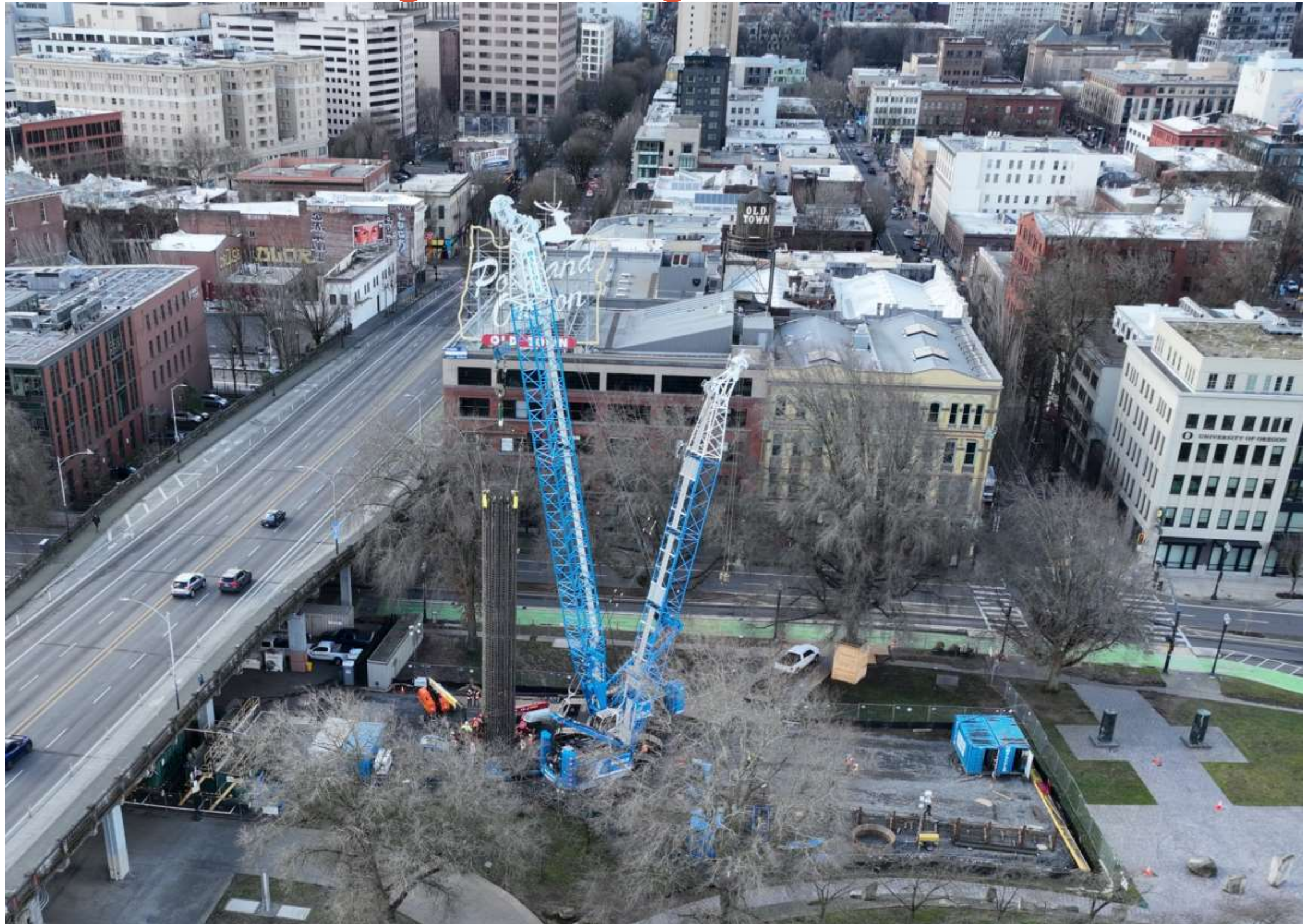
Test Shaft – Drilling Operations



Test Shaft – Setting the Cage



Test Shaft – Setting the Cage



Test Shaft – Concrete Pour



Test Shaft – Wrapping Up



Test Shaft – Unknowns





Questions?