



# GRESHAM TRANSPORTATION SYSTEM PLAN

BPCAC

NOVEMBER 13, 2024

6:00 PM – 8:00 PM



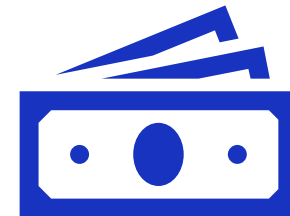
# WHAT'S HAPPENING IN THE GRESHAM 2035 TSP UPDATE



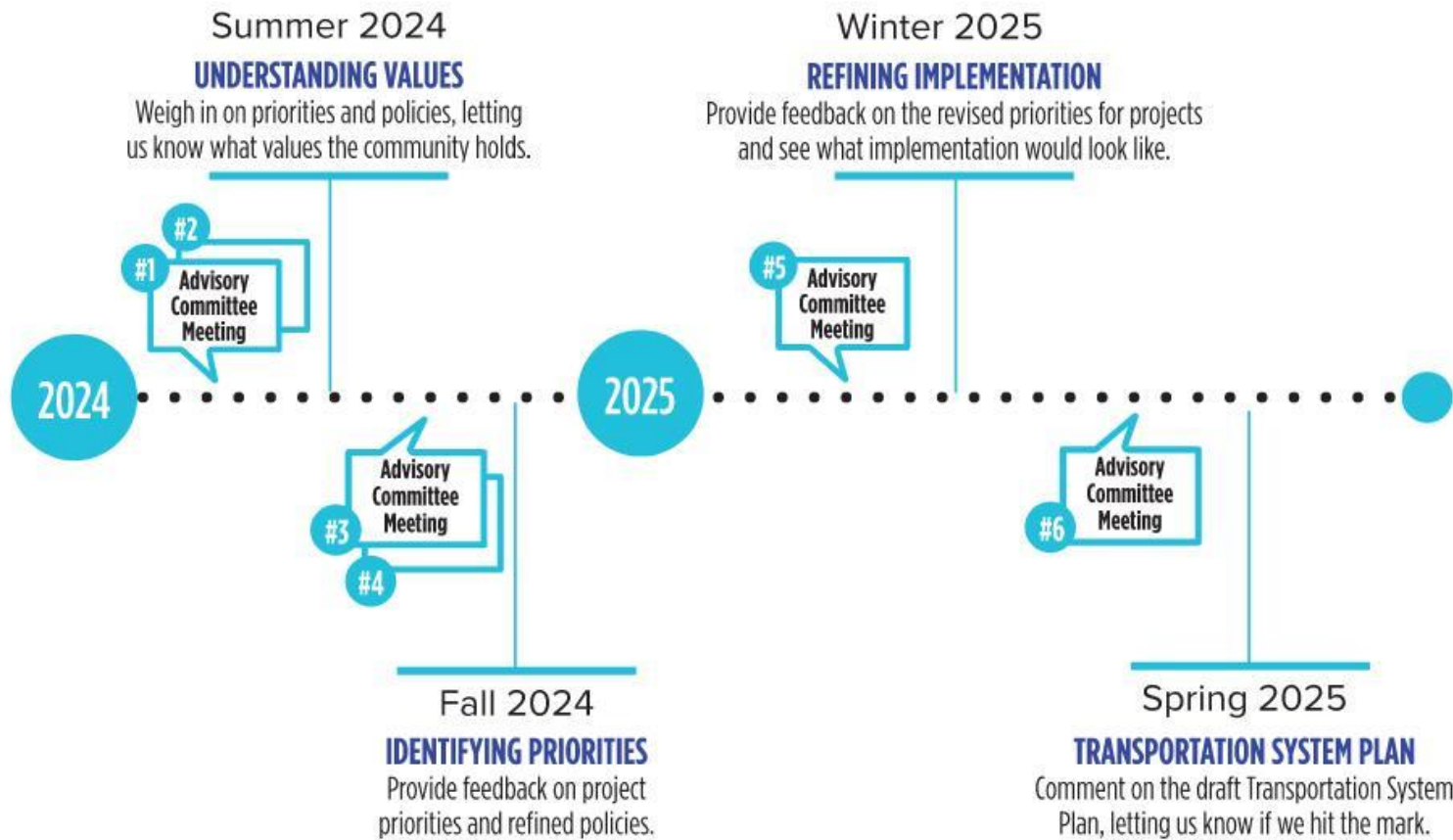
Revise policies to reflect local, regional, and state policies and emerging industry practices



Update and prioritize project lists



Update project costs and projected revenues



# PROJECT SCHEDULE

# COMMUNITY ENGAGEMENT



## Website

[EngageGresham.org/tsp-project](https://EngageGresham.org/tsp-project)



## Community Events

- Rock the Block
- Rockwood Night Out
- Yamhill Block Party
- Farmer's Market
- Rockwood People's Market



## Online Survey

Transportation Values



## 5 Focus Groups

- Spanish Speaking
- SE Asian Community Members
- Low Income Community Members

# POLICY RECAP

- **Existing Policies and Actions**

- Safe, Secure, Attractive, Livability, Community, Access, Mobility, Multimodal
- Minor edits for clarity – “efficient”

- **New Policies and Actions**

- Equity
- Safety
- Climate
- Emerging Technologies

# EQUITY



**UPDATED TSP POLICY**

## SUGGESTED POLICY

The City of Gresham will achieve transportation equity by ensuring that all community members, regardless of economic status, race, age, or ability, have access to a full range of safe, comfortable, and reliable transportation choices to meet their daily transportation needs; and that no community members are excessively burdened by transportation impacts, including costs, community disruption, and environmental conditions such as air quality.

# EQUITY

## UPDATED ACTION ITEMS

### SUGGESTED ACTIONS SUMMARY

- Robust and transparent public outreach process
- Providing the full range of multi-modal transportation options close to affordable housing, employment centers, and services
- Reduce or repair transportation-related disparities faced by populations that have historically had significant unmet transportation needs
- Collect data to identify underserved and overburdened populations
- Avoid, minimize, and mitigate disproportionately high and adverse impacts of transportation projects and programs on those who have been historically underserved or overburdened.

# SAFETY



**UPDATED TSP POLICY**

## SUGGESTED POLICY (Vision Zero and Complete Streets)

Gresham's goal is to ***eliminate transportation-related fatalities and serious injuries***, with a consistent ***focus on design, operation, maintenance, education, and enforcement*** activities that are known to increase safety, including separating different modes of transportation, improving visibility, and reducing motor vehicle travel speeds.

Streets within the City of Gresham will be designed to consider the needs of all people, including but not limited to people walking, bicycling, using shared mobility devices and assistive devices, using transit and riding school buses, driving, and operating commercial and emergency vehicles.



# SAFETY

## UPDATED ACTION ITEMS

### SUGGESTED ACTIONS SUMMARY

- Seek implementation of the East Multnomah County Transportation Safety Action Plan and monitor the need for a Gresham-specific plan.
- Prioritize projects and programs in the Transportation Safety Action Plan
- Reduce speeds and prioritize speeding and reckless driving enforcement programs
- Develop a safety education program for all roadway users
- Expand Safe Routes to School programs to students who are new drivers and parents.
- Use pilot programs to test safety enhancement features and collect data and information about their effectiveness.
- Revise Street Standards to ensure safety for all modes, especially for lighting and visibility.

# CLIMATE



## UPDATED TSP POLICY

### SUGGESTED POLICY

The City will minimize its impact on transportation-generated greenhouse gas emissions by:

- Encouraging fewer and shorter single occupant vehicle trips by reducing VMT.
- Supporting the transition to cleaner fuels through the installation of electric vehicle charging stations and conversion of the municipal fleet.
- Adding shade through landscaping.
- Controlling surface runoff.

# CLIMATE

## UPDATED ACTION ITEMS

### ACTION MEASURES (FROM CLIMATE ACTION PLAN)

- Support dense, mixed-use developments near frequent transit routes through implementation of Climate Friendly and Equitable Communities rules, Middle Housing Rules, and Gresham's Housing Production Strategy
- Review public works standards to support climate resilience in the development of new infrastructure and capital improvement projects.
- Integrate a climate resilience and climate equity approach into the Transportation System Plan.
- Develop a community engagement campaign to support active transportation and transit options.
- Consider requiring all new residential developments to be electric vehicle (EV)-ready.
- Develop an information hub for incentives and permitting for electric vehicle and device (ex. e-bikes) charging projects to streamline permitting requirements and process.

# EMERGING TECHNOLOGIES



**UPDATED TSP POLICY**

## SUGGESTED POLICY

The City of Gresham will utilize emerging technologies to increase the local and regional environmental, economic, and social benefits of the transportation system, particularly Intelligent Transportation Systems (ITS - smart signals, real-time traffic monitoring, and variable signage, curb and parking management tools, and micro-mobility (i.e. bikes, scooters, **jitneys**, golf-carts and similar personal conveyance devices)). The City will regularly review and adapt emerging technologies and incorporate useful tools into the City's plans and processes.

# EMERGING TECHNOLOGIES

## UPDATED ACTION ITEMS

### SUGGESTED ACTIONS SUMMARY

- Develop clear guidelines for micromobility devices
- Implement existing ITS technology as funding and redevelopment opportunities present, including smart signals.
- Expand infrastructure to accommodate and encourage electric vehicles (EV)
- Replace City fleet vehicles with EVs as opportunities occur.
- Create guidelines for curb management
- Develop and implement autonomous vehicle strategies
- Develop the capability for collecting, managing, integrating, and analyzing transportation data

# PROJECT LISTS








- Corridors
- Pedestrian
- Bicycle
- Intersection

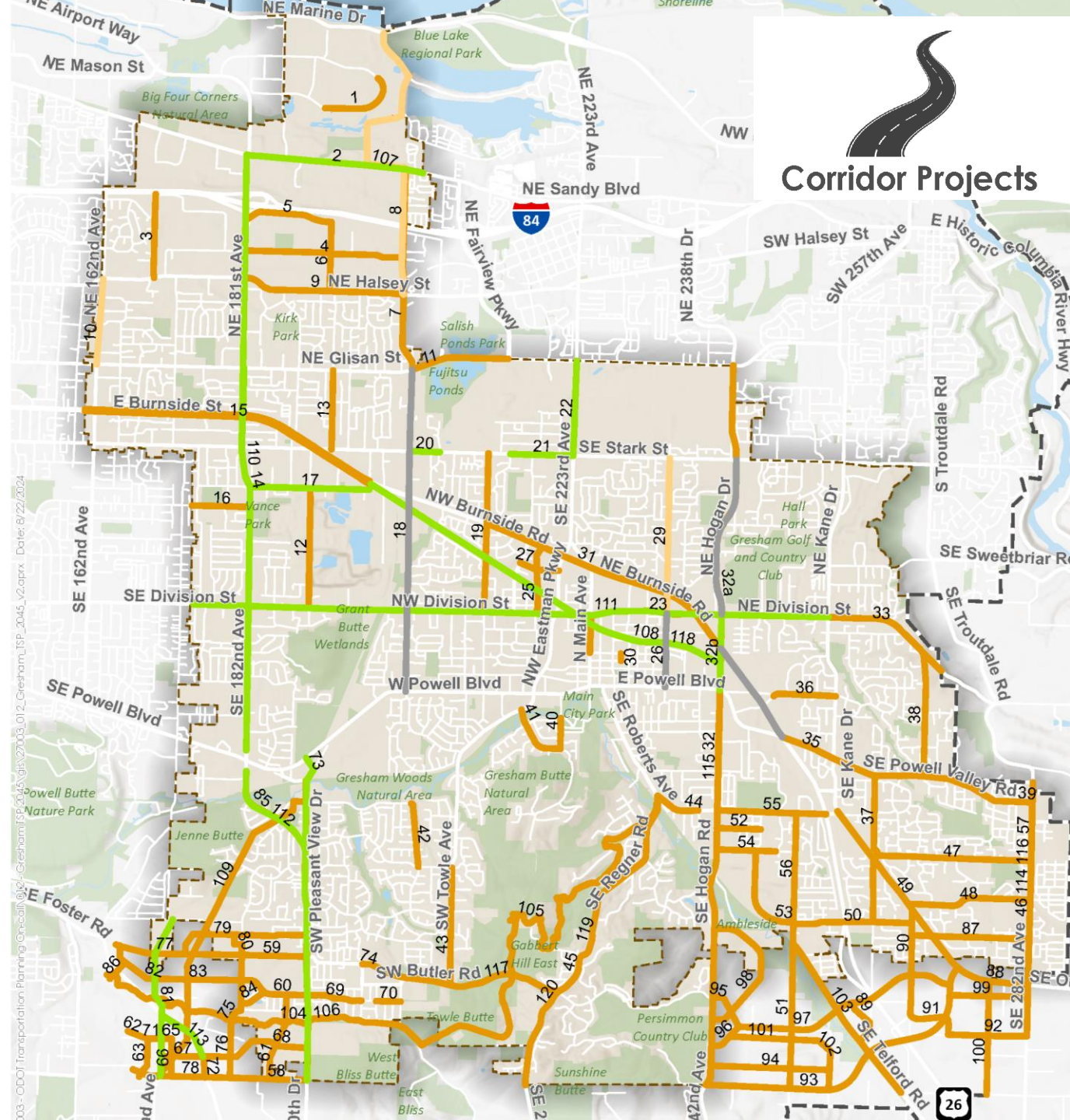
2014  
Transportation  
System Plan

2018  
Active  
Transportation Plan

2025  
Transportation  
System Plan

# CORRIDOR PROJECTS

-  Project Stays on List
-  Project Partially Funded or Constructed
-  Project Constructed or Fully Funded
-  Project No Longer Needed
-  Urban Growth Boundary
-  City Limits
-  Project Number



## Corridor Projects

# TYPES OF PROJECT IMPROVEMENTS – CORRIDORS

**Sidewalks w/ Planter**



**Bike Lanes**





**Medians**





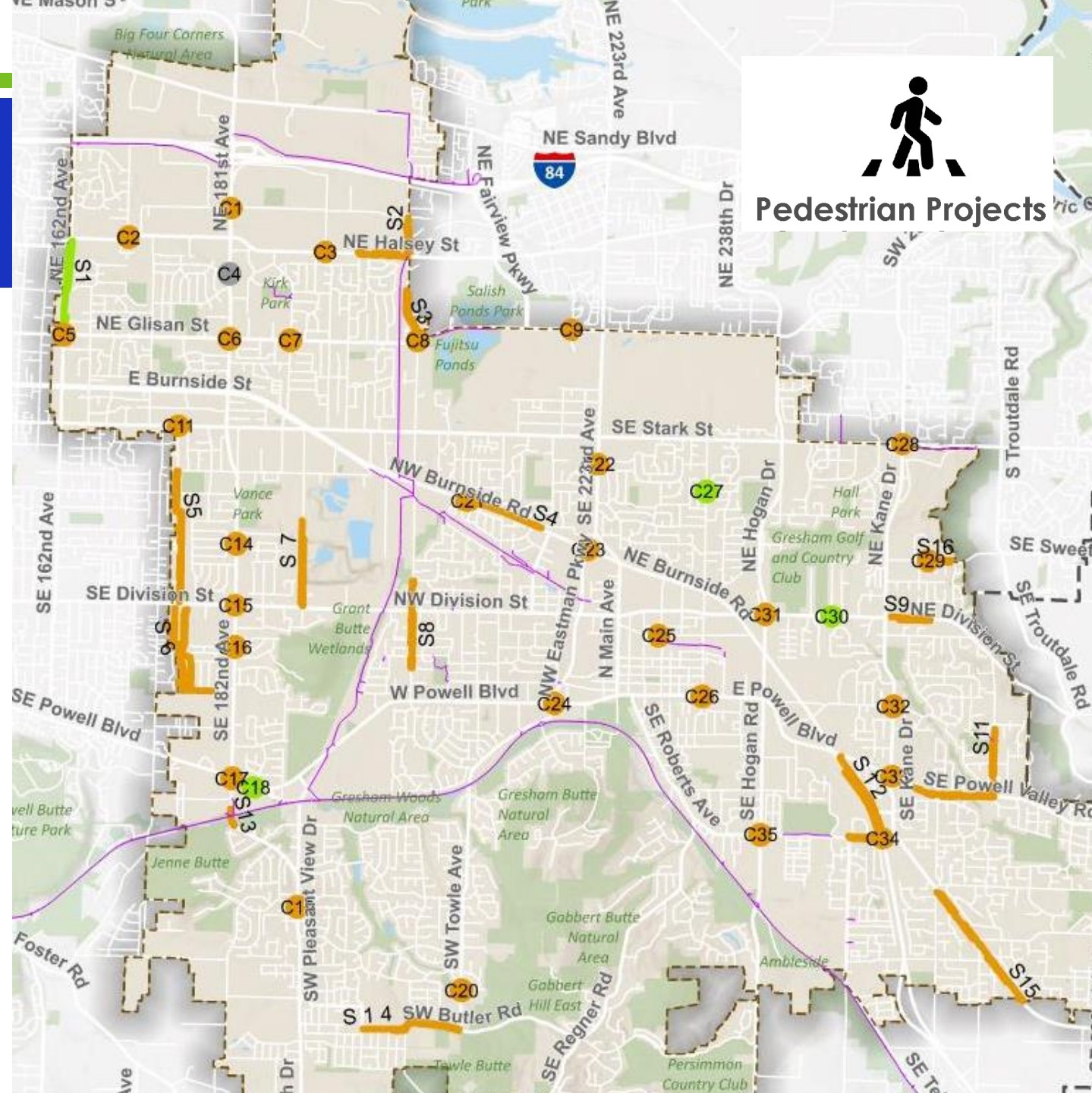


# PEDESTRIAN PROJECTS

-  Project Stays on List
-  Project Partially Funded or Constructed
-  Project Constructed or Fully Funded
-  Project No Longer Needed
-  Urban Growth Boundary
-  City Limits
-  Project Number
-  Off-Street Multi-Use Path



## Pedestrian Projects

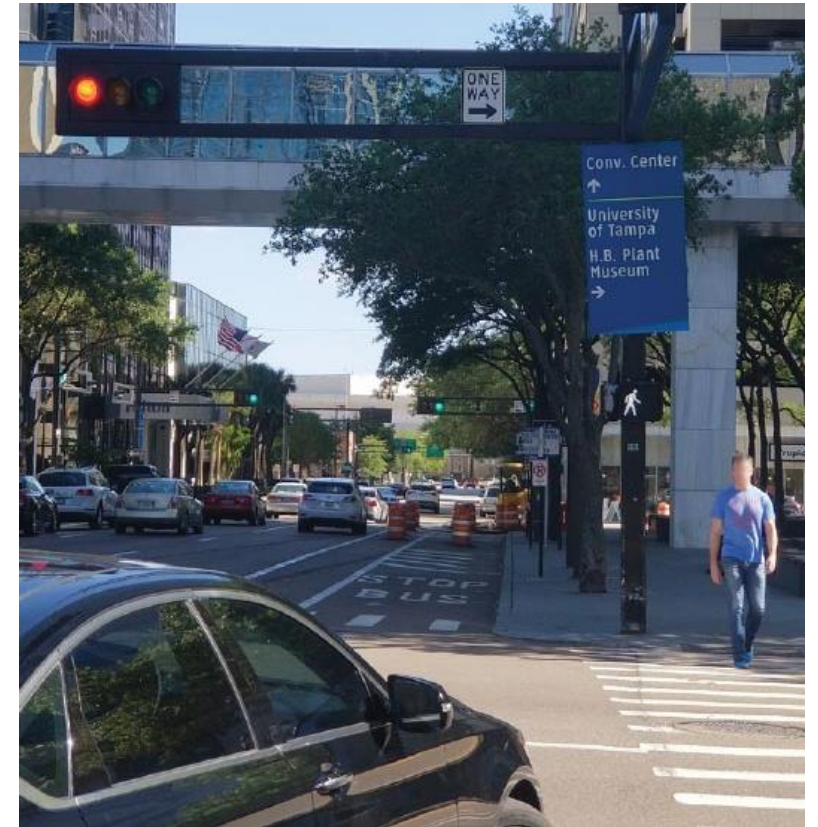


# TYPES OF PROJECT IMPROVEMENTS - PEDESTRIANS

## Sidewalk Infill



## Leading Pedestrian Intervals



# TYPES OF PROJECT IMPROVEMENTS - PEDESTRIANS







**Refuge Islands**



**Rapid Rectangular Flashing Beacons (RRFBs)**

# BICYCLE PROJECTS

-  Project Stays on List
-  Project Partially Funded or Constructed
-  Project Constructed or Fully Funded
-  Project No Longer Needed

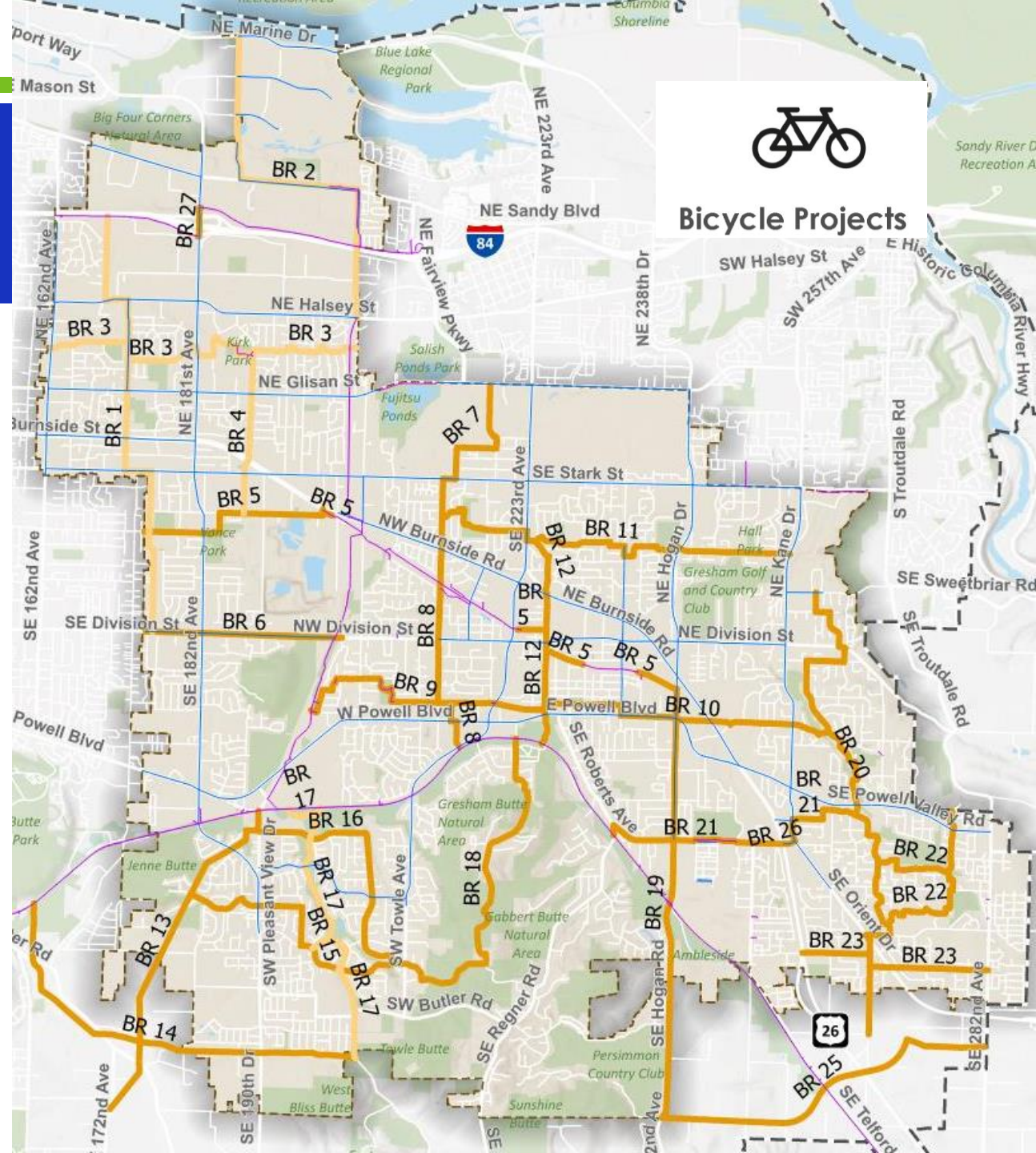
 Urban Growth Boundary

 City Limits

 Project Number

 Bike Lane or Wide Shoulder

 Off-Street Multi-Use Path



# GRESHAM GREENWAYS



**Sharrow  
Pavement  
Marking**



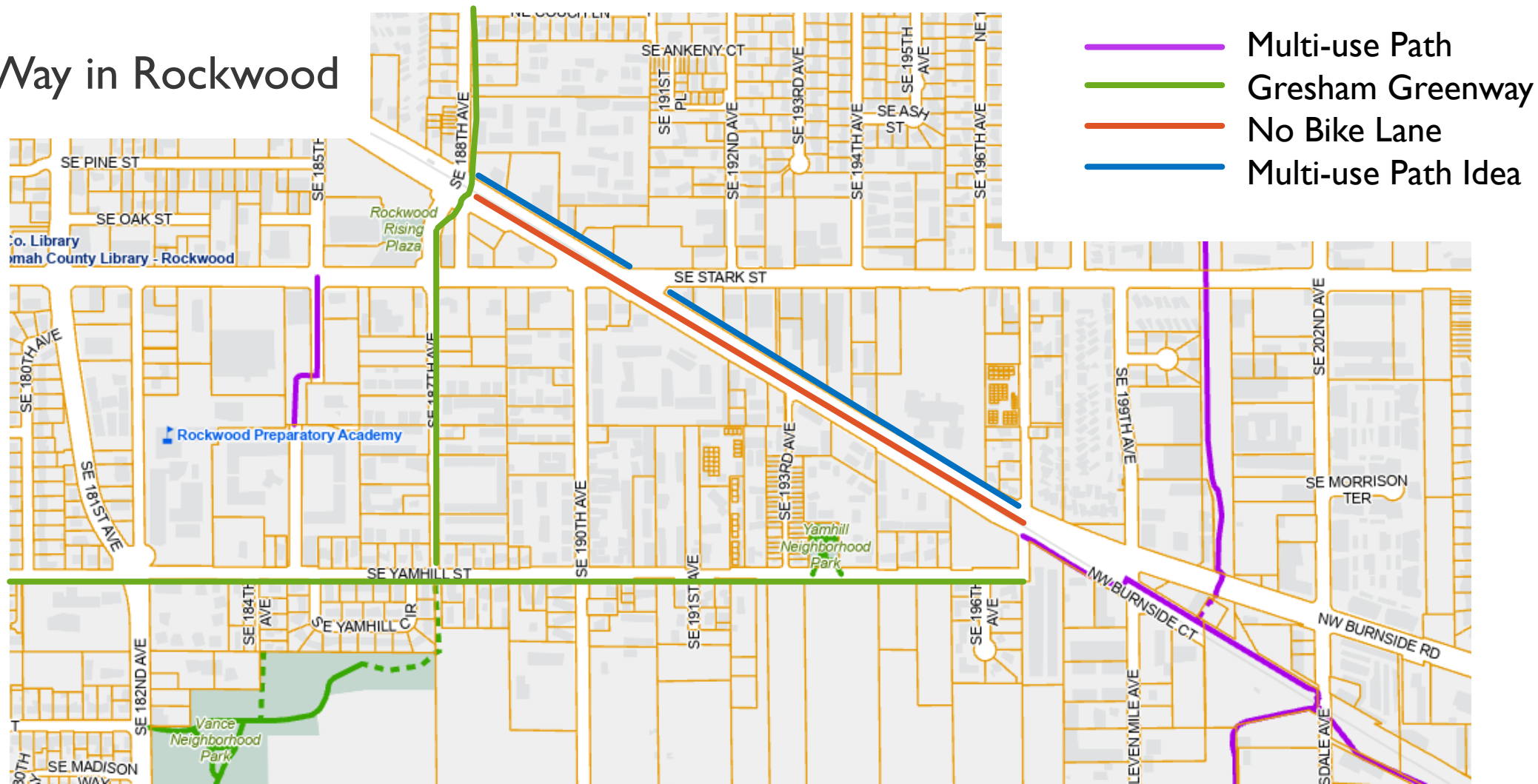
**Wayfinding Signs**



**Gresham Greenway**

# MULTI-USE PATHS

## Wy'East Way in Rockwood



# MULTI-USE PATHS

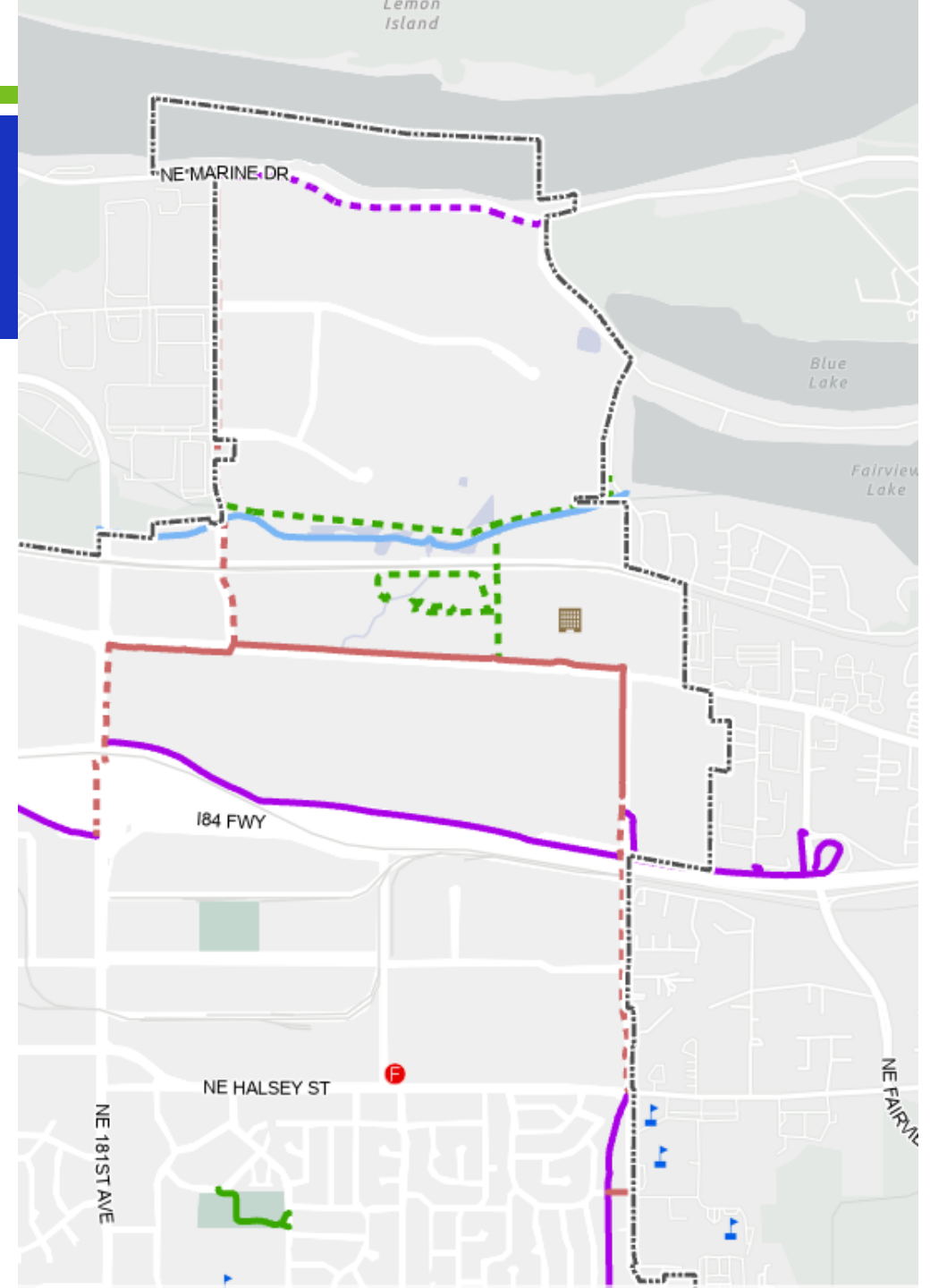
## Expand Wy'East Way in Rockwood





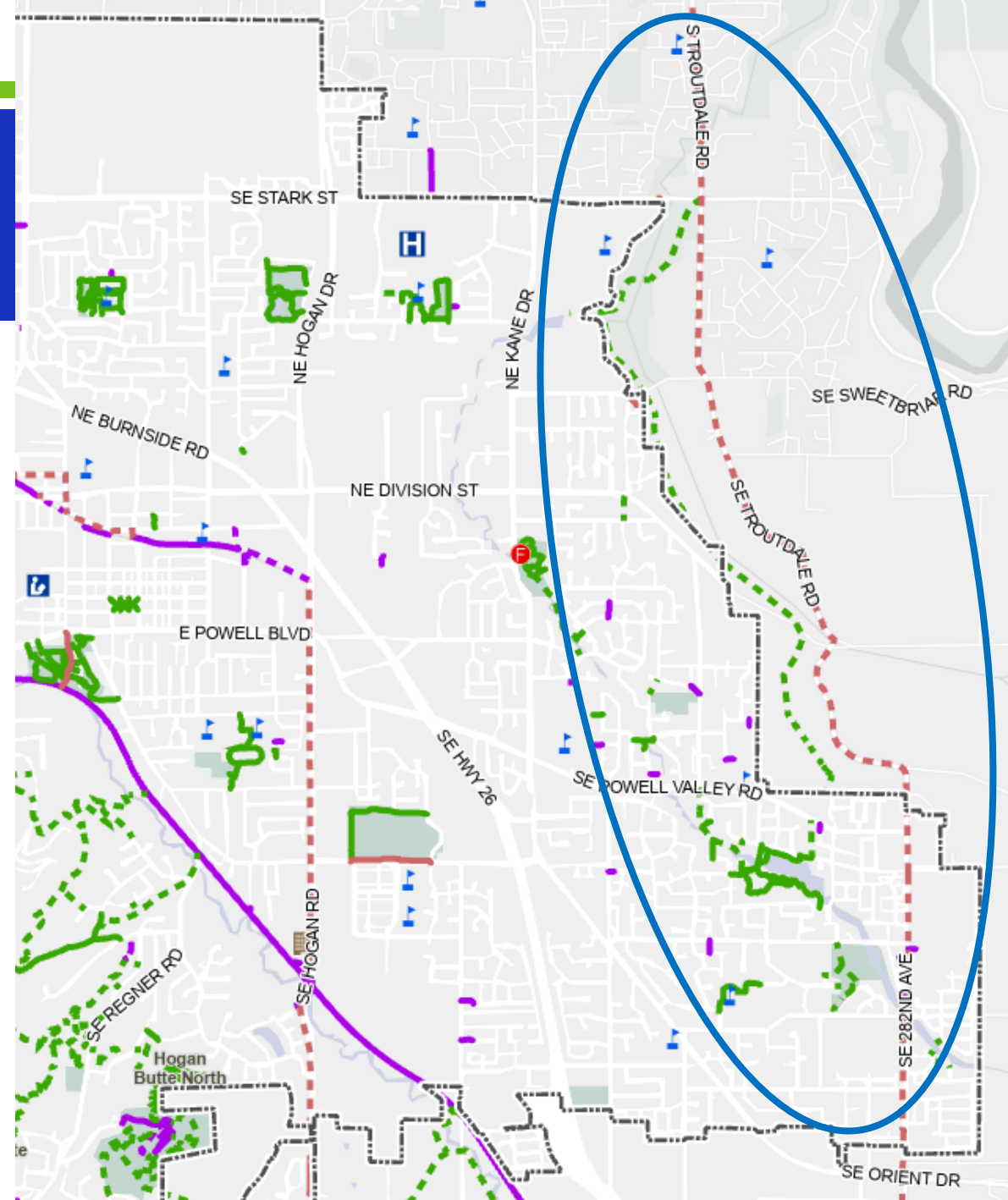
# MULTI-USE PATHS

- Gresham-Fairview Trail – Sandy Blvd to Marine Drive
  - 185<sup>th</sup> Route



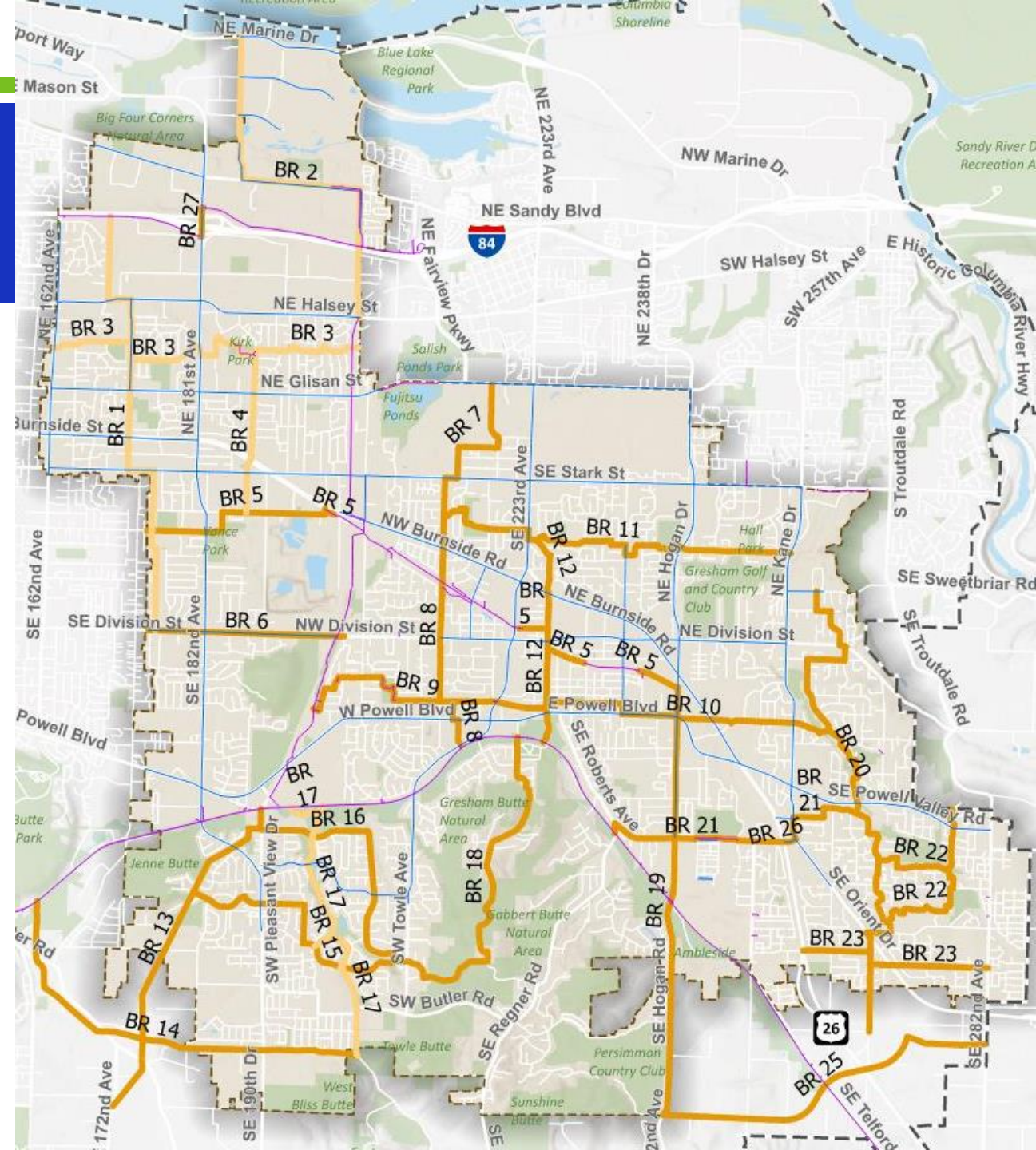
# MULTI-USE PATHS

- Troutdale to Gresham
- Path on 282nd



# QUESTIONS FOR YOU

- How would you prioritize the multi-use path projects?
- Where are the important connections to other parts of East County?
- What projects do you think Gresham needs?



## NEXT STEPS

- Public Outreach #2 is complete. <https://engagegresham.org/tsp-project>
- Project team compiling the project list feedback. Working on Prioritization.
- Update Gresham City Council - Work Session November 19, 4pm.

Contact: Jay Higgins, Senior Transportation Planner

503-618-2215, [Jay.Higgins@GreshamOregon.gov](mailto:Jay.Higgins@GreshamOregon.gov)