



Metro



HCT Strategy Update: Introduction



How we define high capacity transit...

Photos courtesy of TriMet

Mixed traffic

Priority treatments

Exclusive guideway

Local buses

Regional bus

Frequent Service bus

Service Enhancement
Plans/Master Plans

Tram

Enhanced Transit

Streetcar

Corridor based Bus Rapid Transit

Bus Rapid Transit

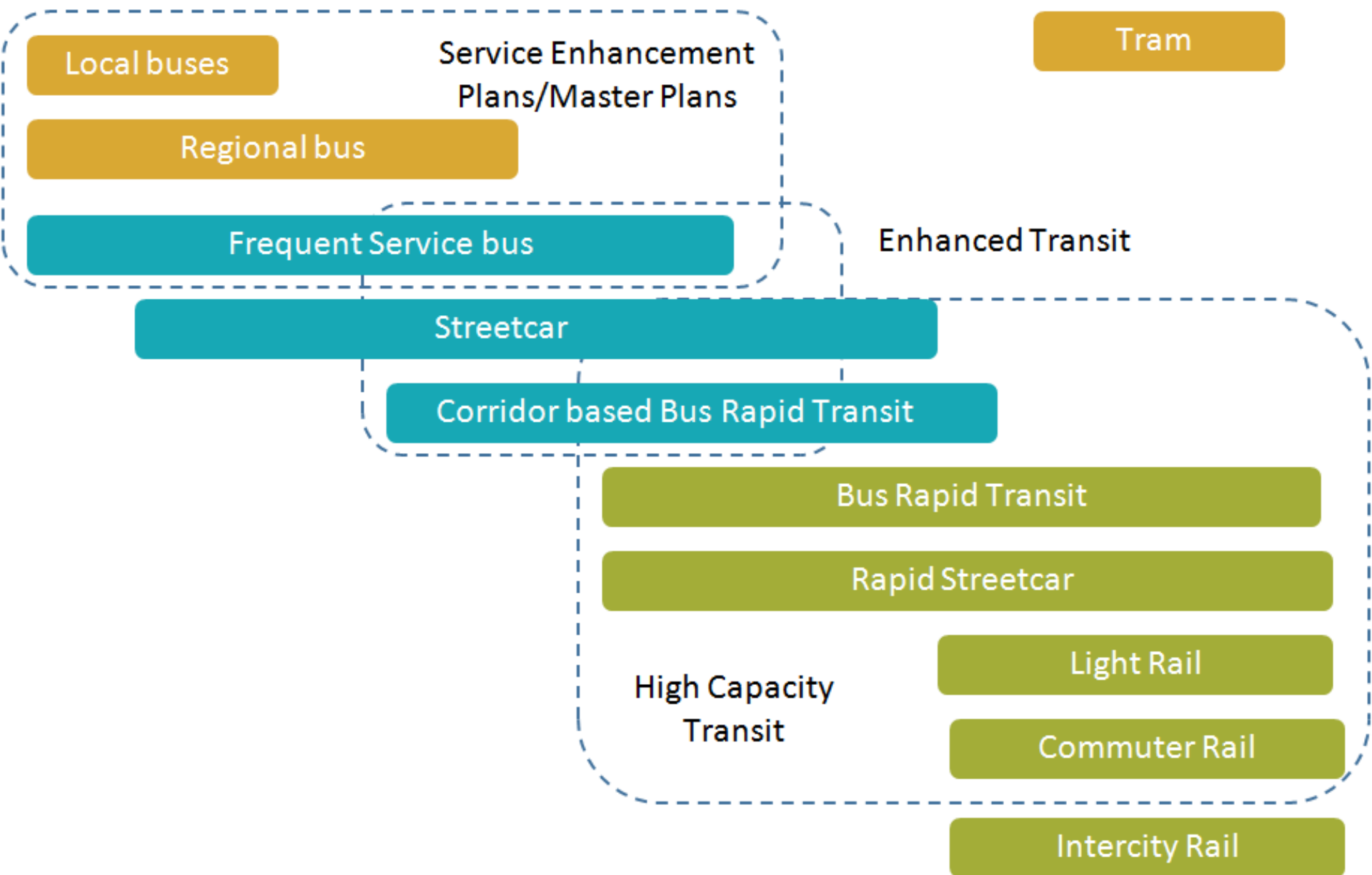
Rapid Streetcar

High Capacity
Transit

Light Rail

Commuter Rail

Intercity Rail



What we want to do...

- address new policy questions around the future – bus rapid transit
- re-envision regional high capacity transit
- create a “pipeline” of corridor investments



TRIOMET

SMART
SOUTH METRO AREA REGIONAL TRANSIT

CLACKAMAS
COUNTY

WASHINGTON COUNTY
OREGON

Oregon
Department
of Transportation

Multnomah
County

RTC

CITY OF PORTLAND, OREGON
1851

C-TRAN

Who we're
working
with...

How it fits in with regional work...



- 2040 Growth Concept



- Regional Transportation Plan



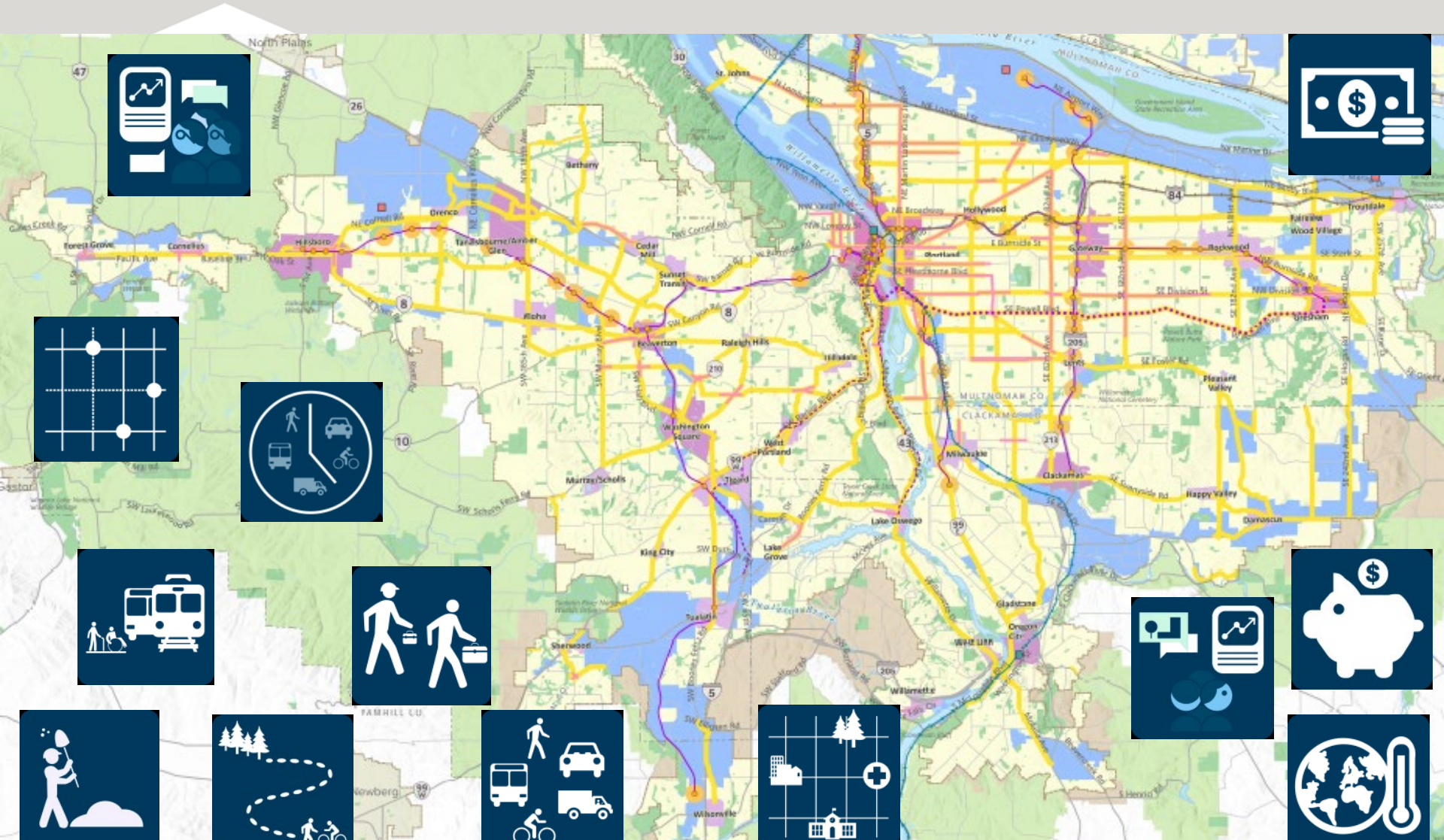
- Regional Transit Strategy



- Climate Smart Strategy

***Transit
should be
safe,
reliable,
affordable,
and
convenient***

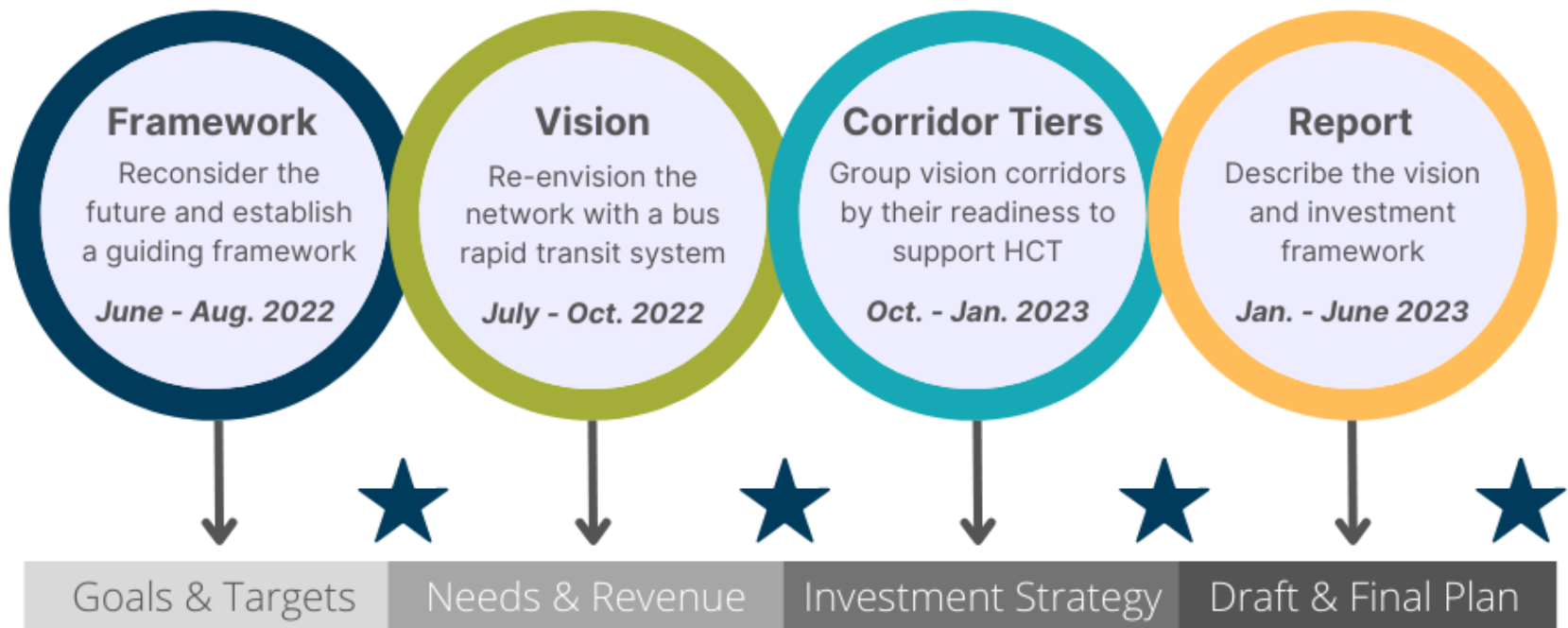
What we are considering...



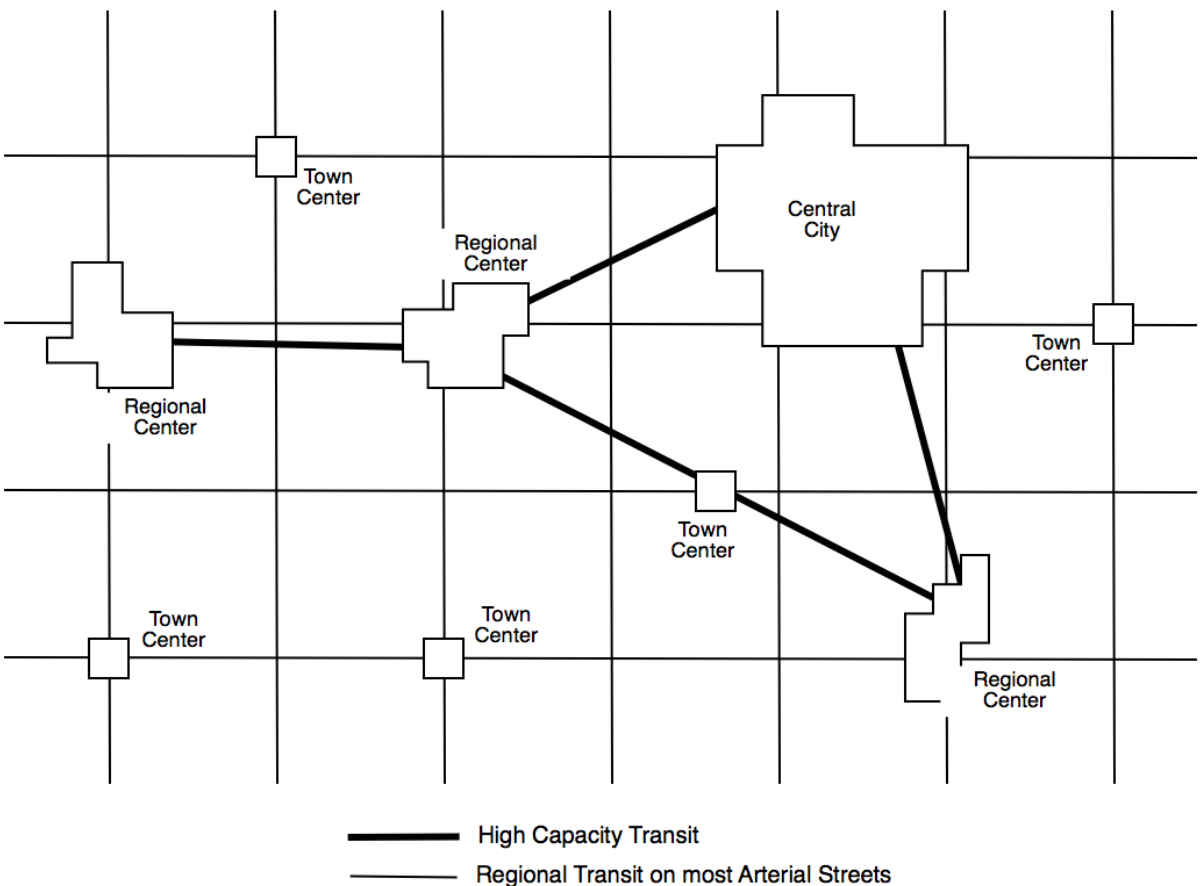
How the work is organized...

Update Timeline

★ Stakeholder and/or public engagement



Regional Transportation Plan Phases



Regional Transit Network Policy 4: Make transit more convenient by expanding high capacity transit; improving transit speed and reliability through the regional enhanced transit concept.



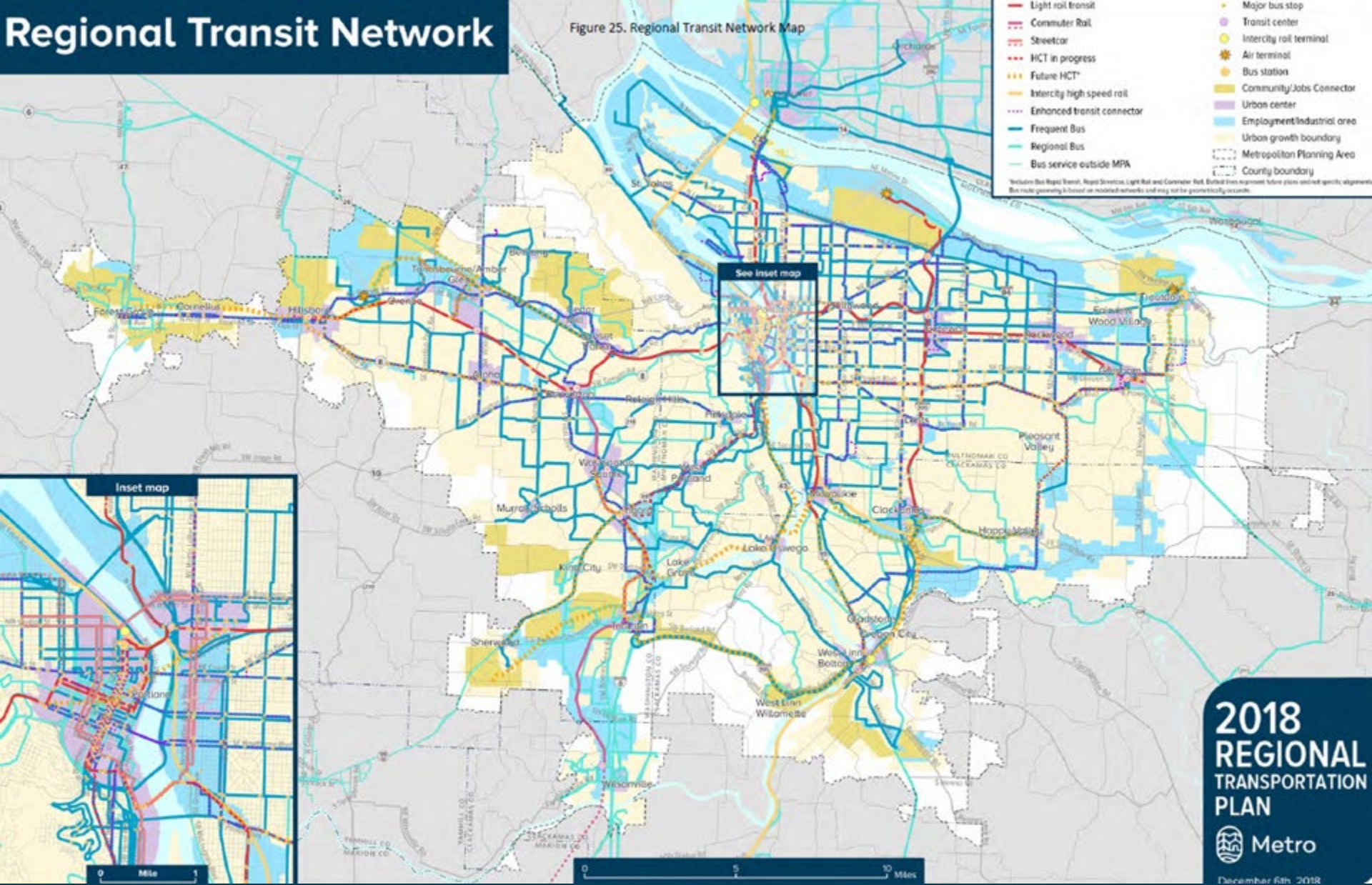
HCT Policy Framework



What we've heard...

Regional Transit Network

Figure 25. Regional Transit Network Map



2018 REGIONAL TRANSPORTATION PLAN

 **Metro**

December 6th 2018

HCT Vision

Regional Transit Vision

RTP Call for Projects

Existing HCT System Map

To be evaluated a project must be:

- (1) In Regional Transit Strategy
- (2) Eligible for the FTA Capital Investment Grant (CIG) Program



Core Criteria Assessment

MOBILITY AND RIDERSHIP

- Current and/or future ridership
- Transit rider travel time benefit

LAND USE SUPPORTIVENESS AND MARKET POTENTIAL

- Land use supportiveness
- Supportiveness of urban form
- Enhances connections to and between 2040 Growth Areas
- Rebuilding/ redevelopment opportunity

COST EFFECTIVENESS

- Operating Cost (Operating Cost per Rider)
- Capital Cost (Capital Cost per Rider)

EQUITY BENEFIT

- Access to jobs and services for historically marginalized populations

ENVIRONMENTAL BENEFIT

- Reduction in emissions

Filtering Process

- (1) Core criteria assessment
- (2) Time horizon



Readiness Criteria Assessment

FUNDING POTENTIAL

- FTA Scoring Assessment (based on FTA New/Small Starts CIG criteria)

LOCAL COMMITMENT AND PARTNERSHIPS

- Documented local and community support
- Adopted transit-supportive population and employment growth aspirations
- Supportive land use policies
- Partnerships with agencies and municipalities, including right-of-way owner
- Displacement analysis and partnerships, policies and tools

"NOT READY"

All projects that go through the Core Criteria Assessment will be included in the "Scorecard"

Assessment of Regional Transit Investments "Scorecard"

"READY"

Projects that meet readiness criteria advance into FTA process based on local / regional capacity

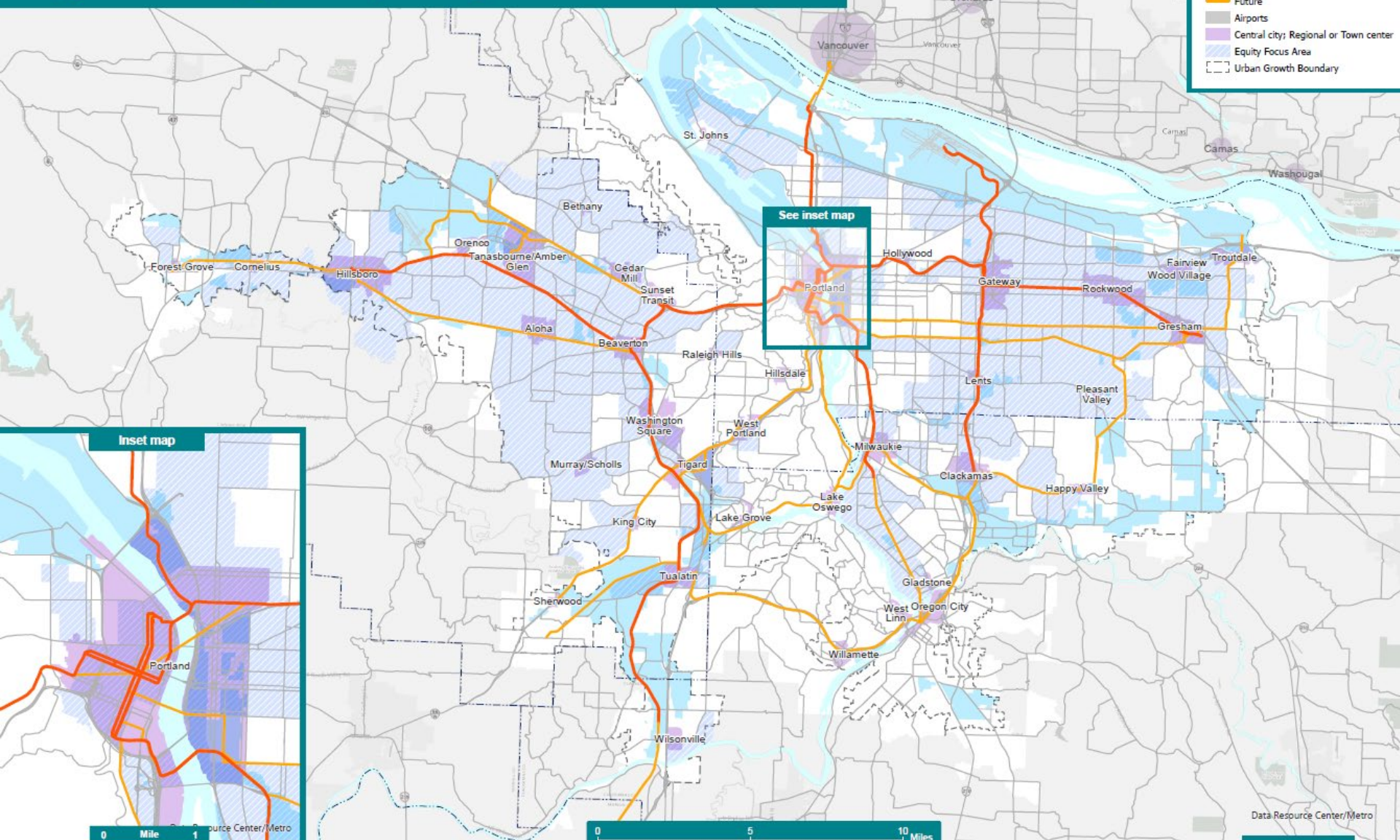
FTA PROJECT DEVELOPMENT

What guidance the RTP provides for criteria...

Regional High Capacity Transit Network

High Capacity Transit

- Existing
- Future
- Airports
- Central city; Regional or Town center
- Equity Focus Area
- Urban Growth Boundary



See inset map

Inset map

0 Mile 1 Mile Data Resource Center/Metro

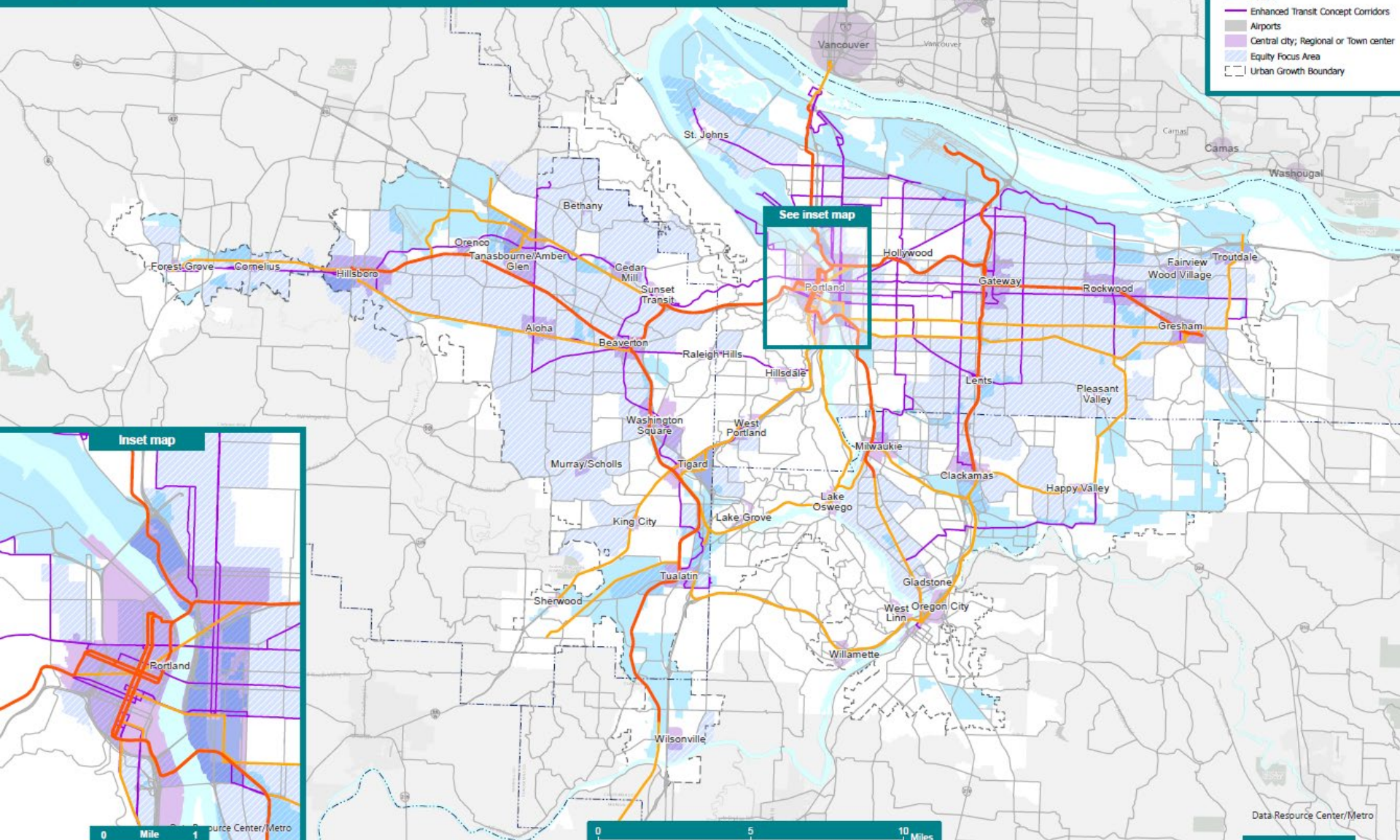
0 5 10 Miles

Data Resource Center/Metro

Regional High Capacity Transit Network

High Capacity Transit

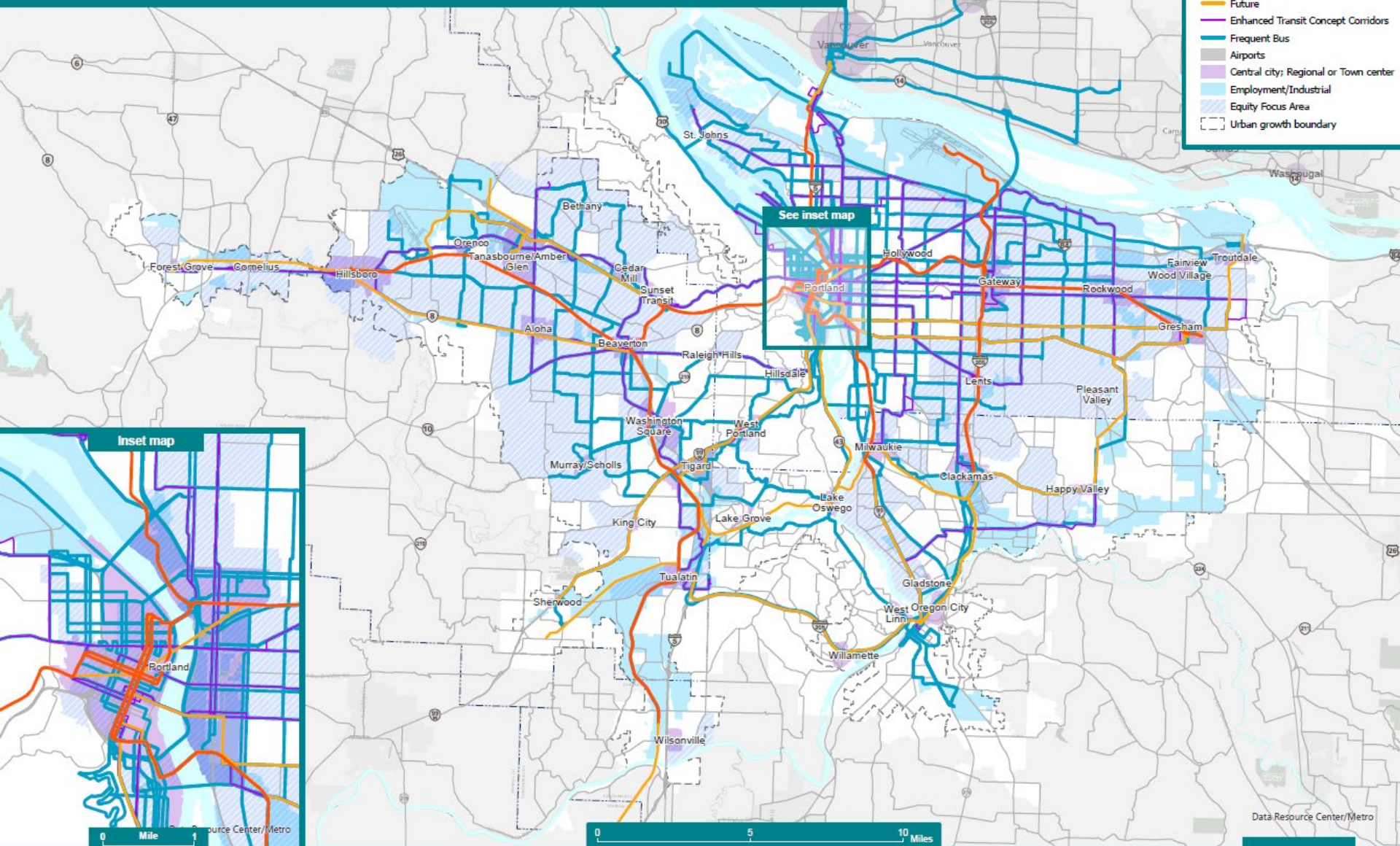
- Existing
- Future
- Enhanced Transit Concept Corridors
- Airports
- Central city; Regional or Town center
- Equity Focus Area
- Urban Growth Boundary



Regional High Capacity Transit Network

High Capacity Transit

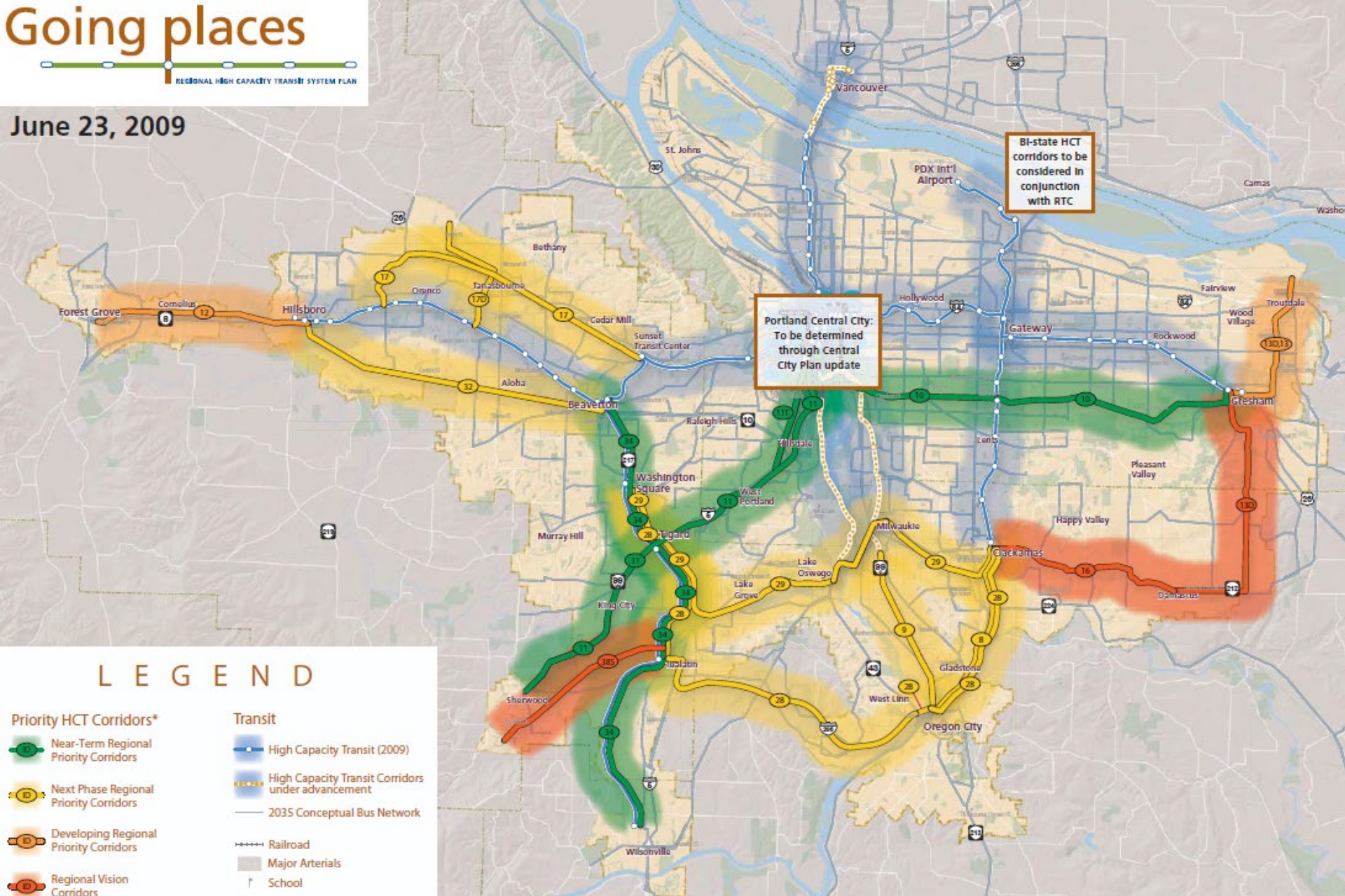
- Existing
- Future
- Enhanced Transit Concept Corridors
- Frequent Bus
- Airports
- Central city: Regional or Town center
- Employment/Industrial
- Equity Focus Area
- Urban growth boundary



Going places

REGIONAL HIGH CAPACITY TRANSIT SYSTEM PLAN

June 23, 2009



LEGEND

Priority HCT Corridors*

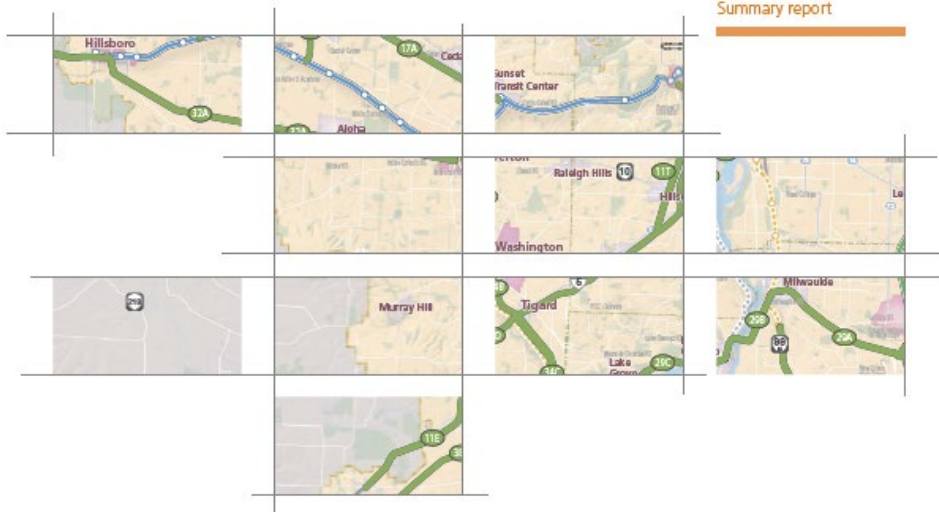
- Near-Term Regional Priority Corridors
- Next Phase Regional Priority Corridors
- Developing Regional Priority Corridors
- Regional Vision Corridors

Transit

- High Capacity Transit (2009)
- High Capacity Transit Corridors under advancement
- 2035 Conceptual Bus Network
- Railroad
- Major Arterials
- School

HCT Tiered Corridors

June 2010
Summary report



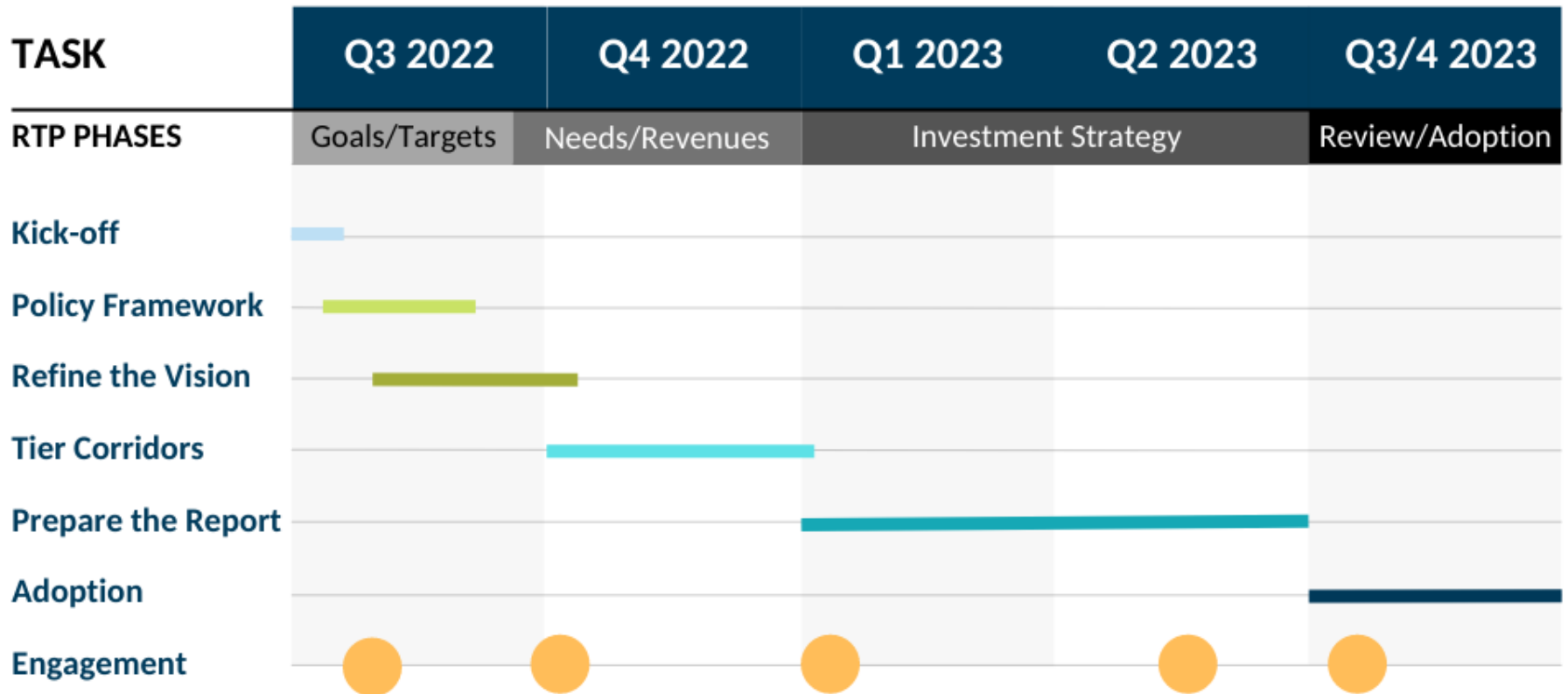
REGIONAL HIGH CAPACITY TRANSIT SYSTEM PLAN

2035

Summary report

June 2010

What the schedule looks like...



What's coming up...

High Capacity Transit Strategy Update
 We're working on a strategy for providing high quality transit service that gets you where you need to go quickly, conveniently and affordably.

What is the update? Why do it now?
 We're working on an update to the high capacity transit strategy that was adopted in 2017. The update will address the needs of the growing region. The High Capacity Transit Strategy is a key component of the 2035 Regional Transportation Plan (RTP) and will provide the framework for the region's transit system.

Update Timeline

Public Transit 101

Inter-City

High Capacity

Enhanced and Frequent

Metro

Parks + Venues Tools + Services What's Happening About Metro

Home > Public projects

2023 Regional Transportation Plan

Learn how Metro is working across greater Portland to expand options for how people and goods get where they need to go safely, affordably and reliably today and into the future.

Transportation planning is about more than deciding where to build roads, transit, sidewalks and bikeways. It's about connecting people with their families and friends and to schools, jobs, parks and other important places. It's about ensuring that no matter where you live or where you're going, you can have safe, reliable and affordable options to get there. Investing in our transportation system is

Climate and transportation expert panel

Hear from experts across the country about tools, best practices and lessons learned in the assessment and monitoring of the climate impacts of transportation.

Wednesday, June 22, 2022
 7:30 to 10 a.m.

Register for the webinar →

All aboard! Exploring transit options for the Treasure Valley

1 Welcome! Learn a bit about high capacity transit before you begin.

2 TRADEOFFS

3 DESTINATIONS

4 PREFERENCES

5 WRAP UP

WELCOME

All aboard! Exploring transit options for the Treasure Valley

COMPASS is planning for a future high-capacity transit system that will connect Caldwell to Boise to meet the demands of our growing region. While building a high capacity transit system is still likely 20+ years away, the time to plan for it is now. Take this short survey to help us understand how this type of service could serve you.

Did you know? COMPASS, the Community Planning Association of Southwest Idaho, is the forum for regional collaboration in Ada and Canyon Counties. COMPASS develops the long-range transportation plan — *Community in Motion* — for the two-county area.

oregonmetro.gov

