



Metro

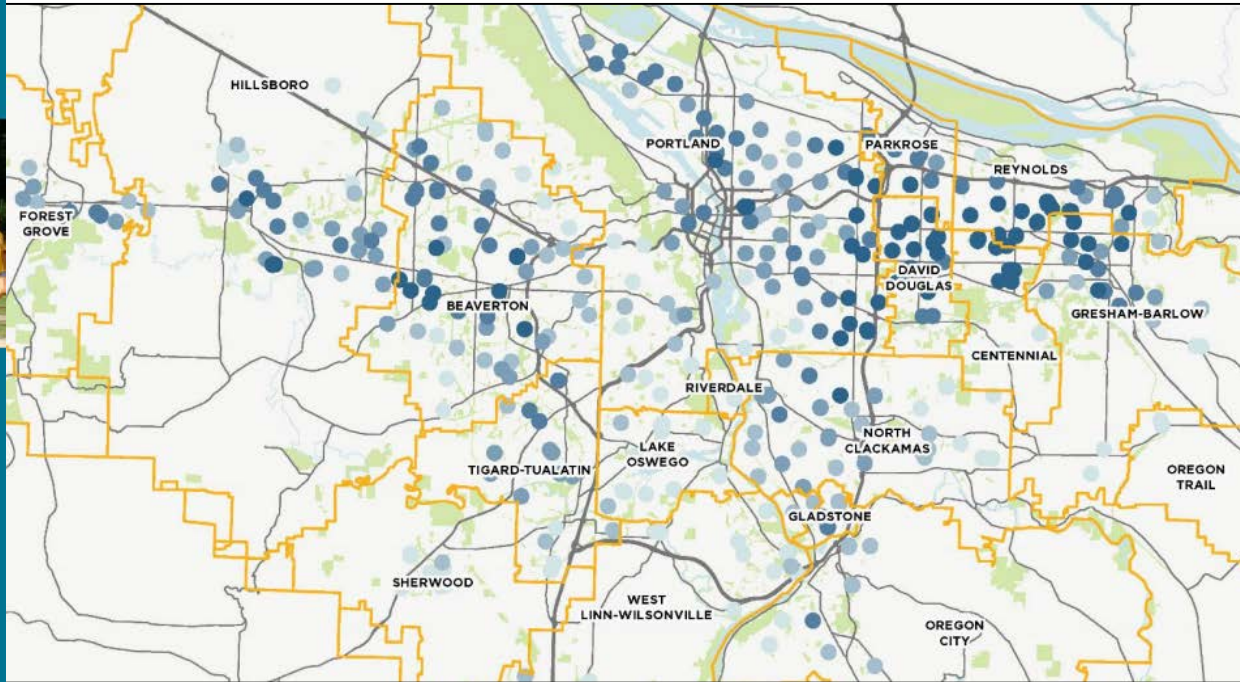


Regional School Walkshed Tool

Data update & new interactive map tool

EMCTC March 2023

2016 Regional SRTS School Site Analysis



Oregon Metro

Regional Safe Routes to School Framework

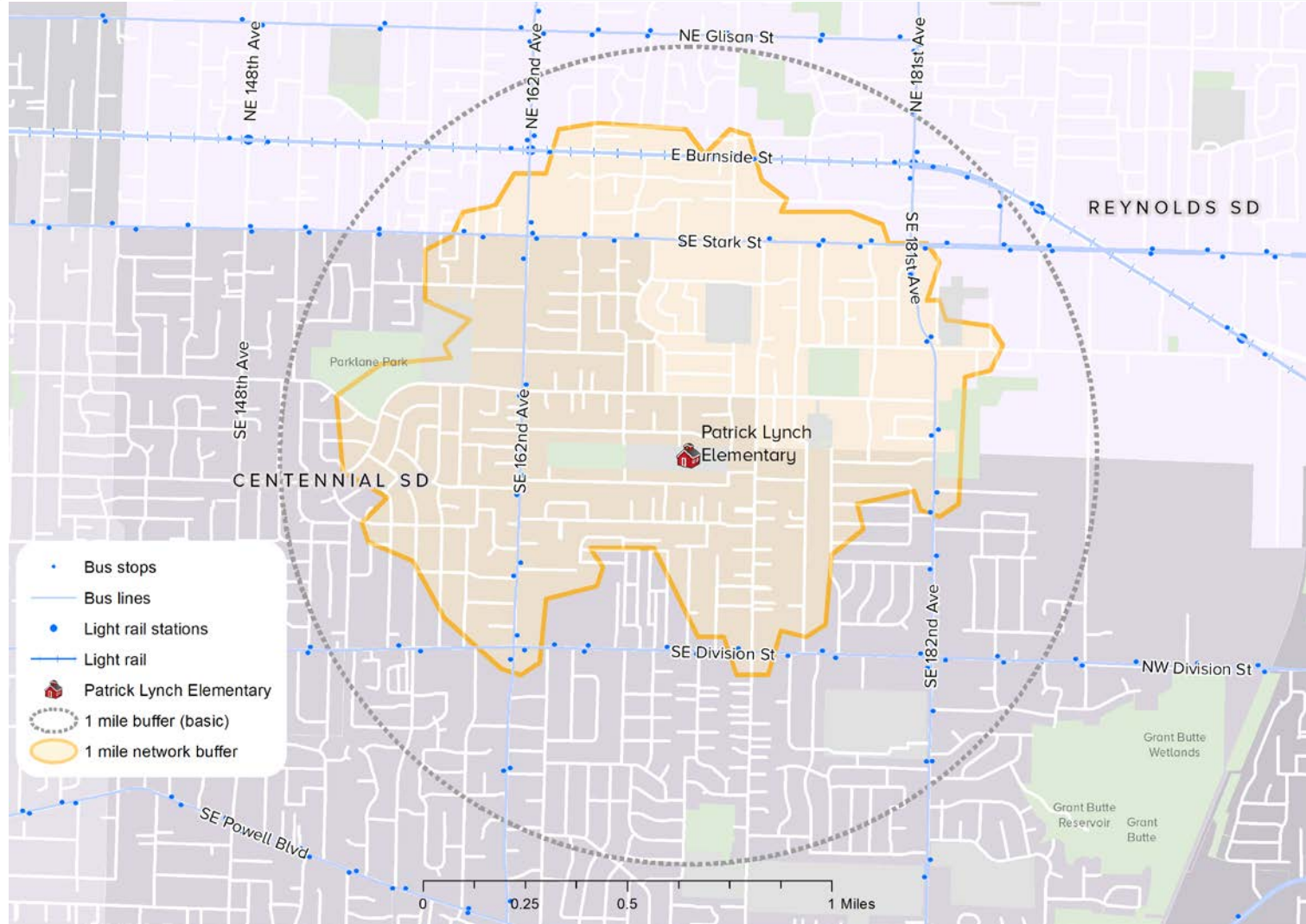
October 2016



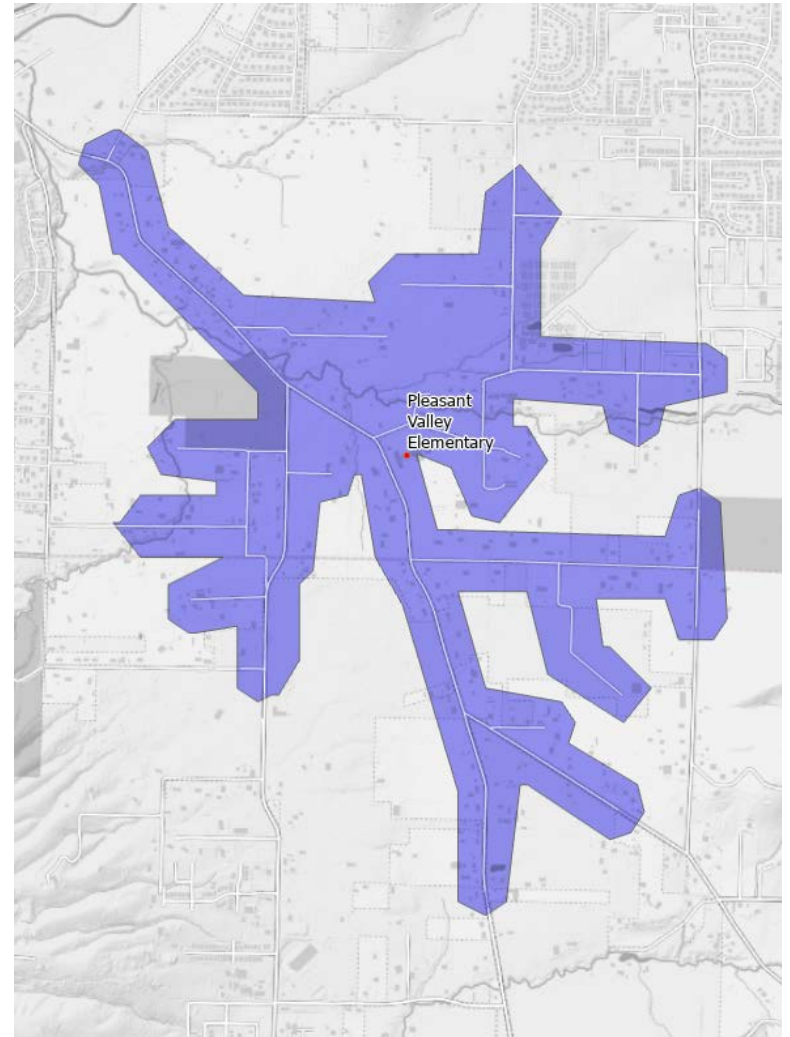
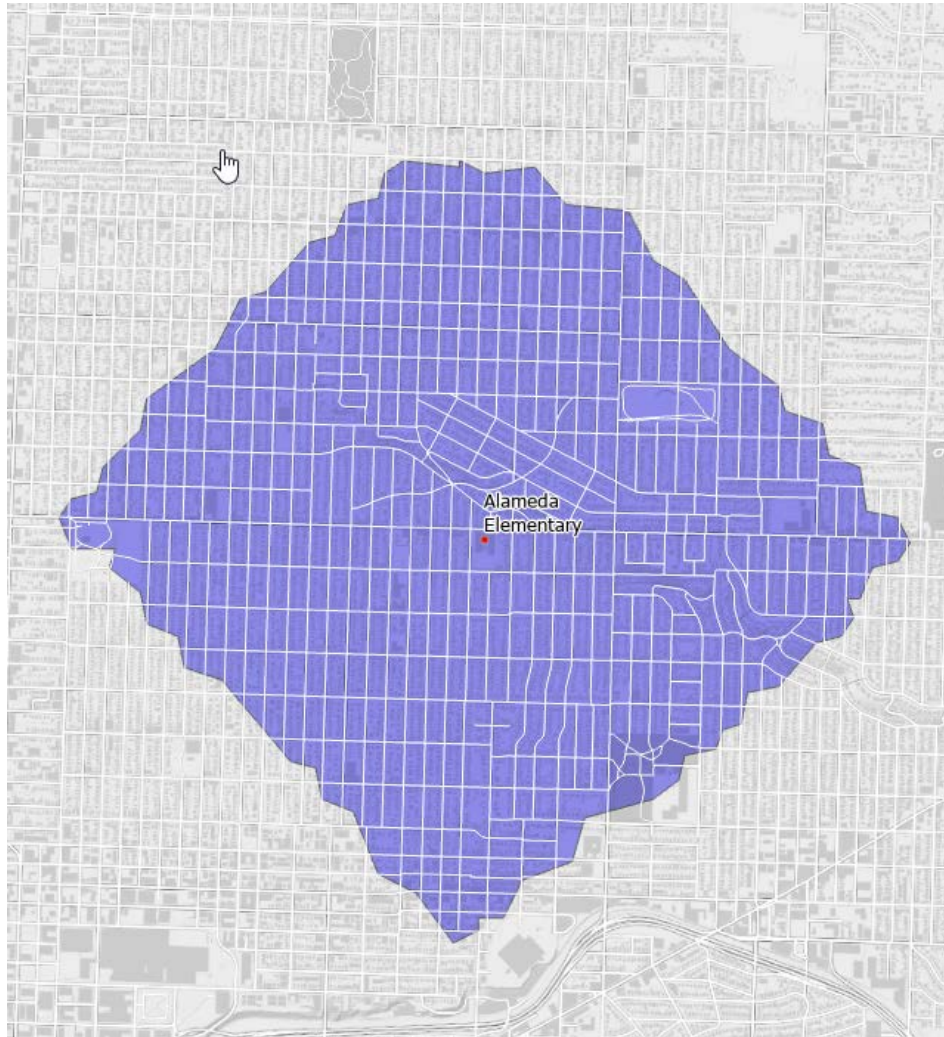
2023 Update: Purpose

- Provide partners with up-to-date school demographic data and traffic safety data to inform local Safe Routes to School programming
- Support partners in grant applications for both programmatic and infrastructure funding.
- Develop a walkshed model that could be applied locally and incorporate additional data analysis based on program or jurisdiction needs

Introduction of walksheds



Refinement from Network Analysis approach



Updated methodology & new variables

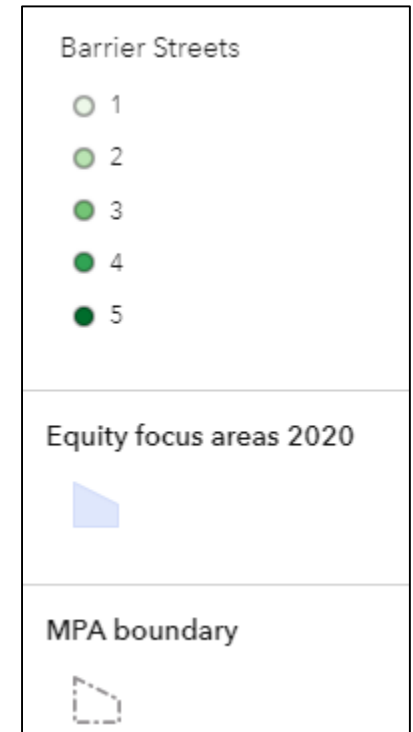
	Variable	Description	Data Source
Equity	1.) Absenteeism (new)	Percent of students chronically absent (students missing 10% or more school days)	ODE – ODOT SRTS (2020-2021)
	2.) BIPOC students	Percent students of color	ODE – ODOT SRTS (2020-2021)
	3.) Disability (new)	Percent of students with a disability	ODE – ODOT SRTS (2020-2021)
	4.) English Learners (new)	Percent of students speaking English as a second language	ODE – ODOT SRTS (2020-2021)
	5.) Income	Percent of low-income students	ODE – ODOT SRTS (2020-2021)
Safety	6.) Barrier Streets	Miles of streets within school walkshed considered a barrier (>2 lanes OR > 35 mph, OR >2,500 peak PM traffic volume)	Metro (2015)
	7.) Crashes	Crashes within school walkshed calculated using Metro High Crash Corridor methodology: (All fatal and serious injuries within school walkshed x 10 + all bike/ped collisions x 3) (new methodology)	Metro/ODOT (2016-2020)
	8.) Missing Sidewalks	Percent of non-freeway streets with sidewalks (one or both sides) within school walkshed*	Metro (2022)

Data analysis: School quintile scores

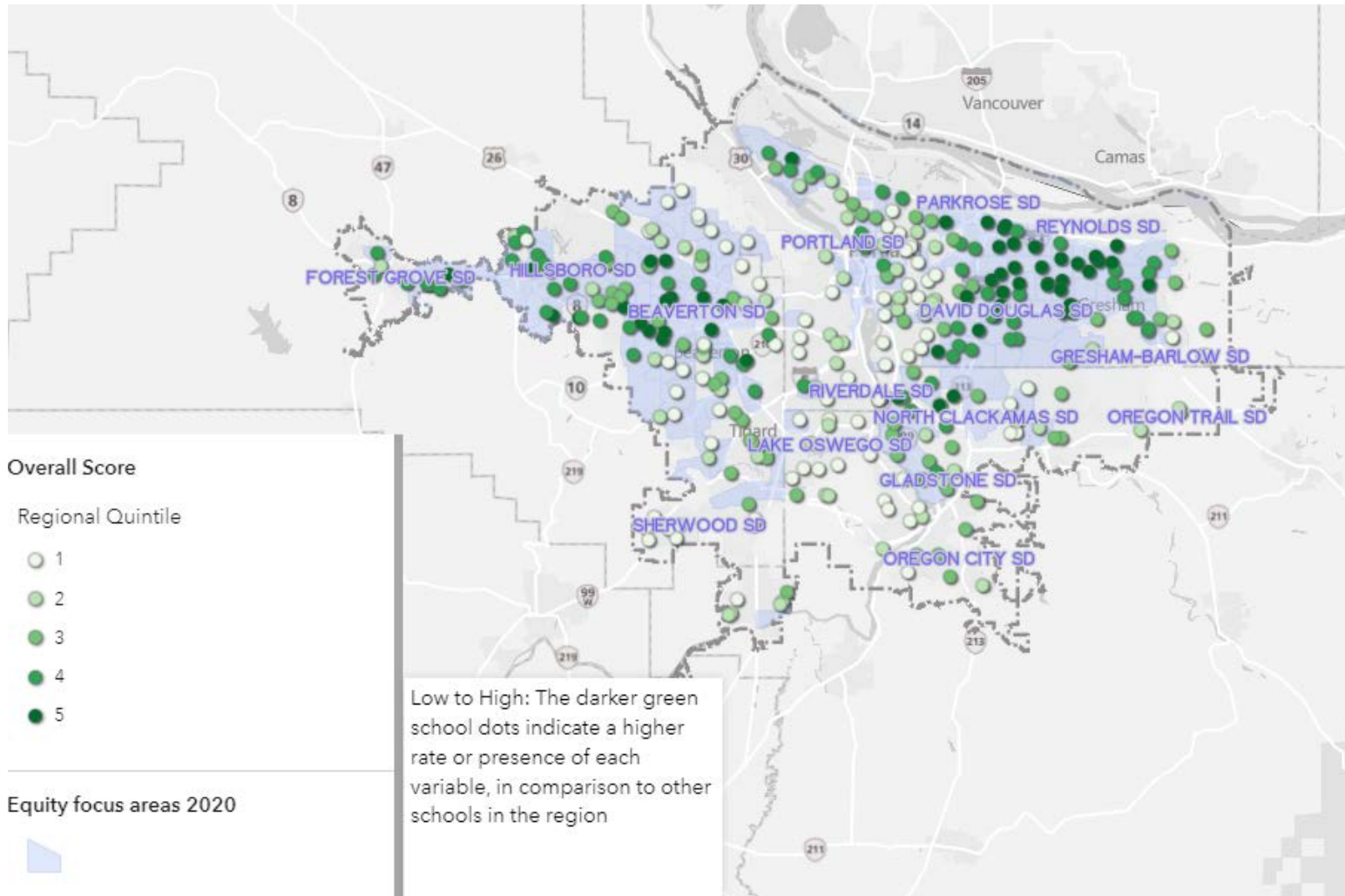
All schools in the region were placed into quintiles (equal groups of 5) based on data for each of the 8 variables.

Each school was also given an 'overall quintile score: an average of all variable scores

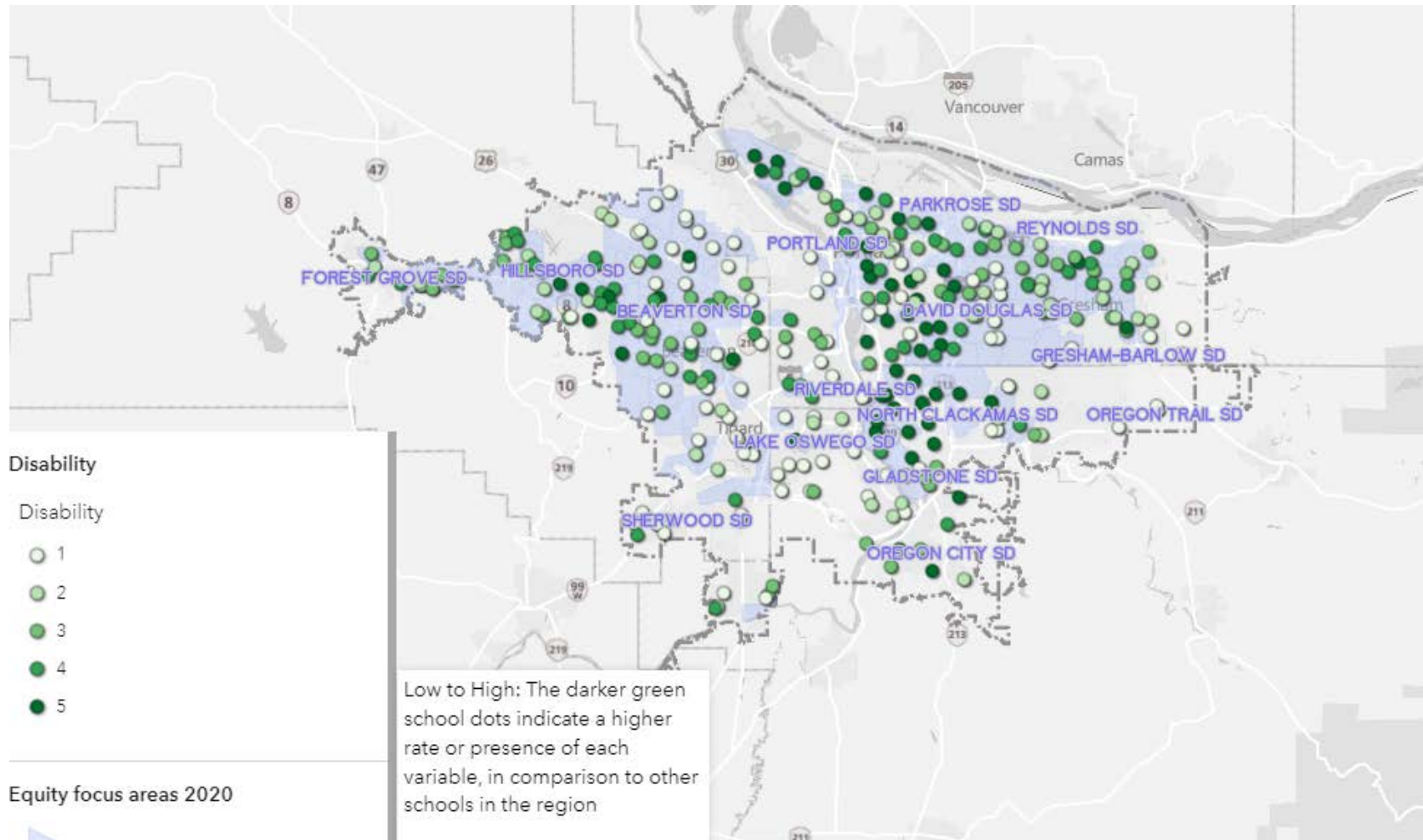
A higher quintile score means the school has a higher presence of that variable compared to other schools



Viewing the data regionally

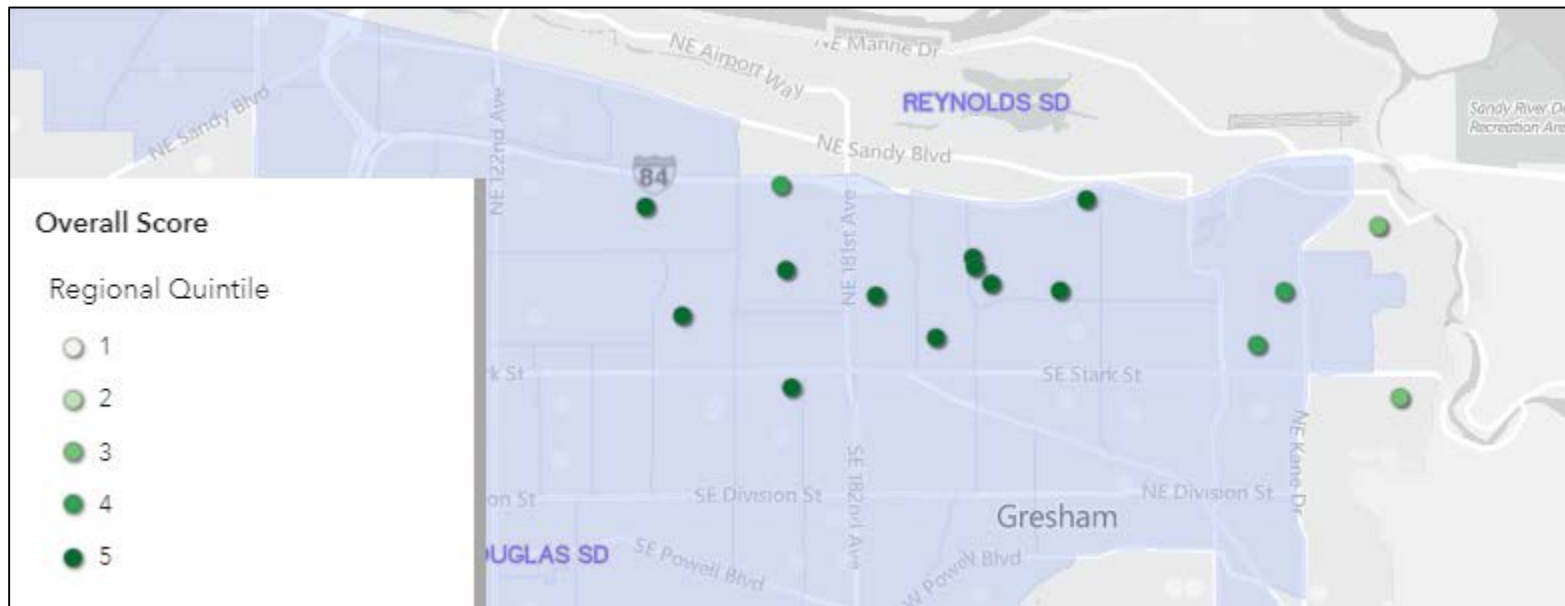


Viewing the data regionally by variable



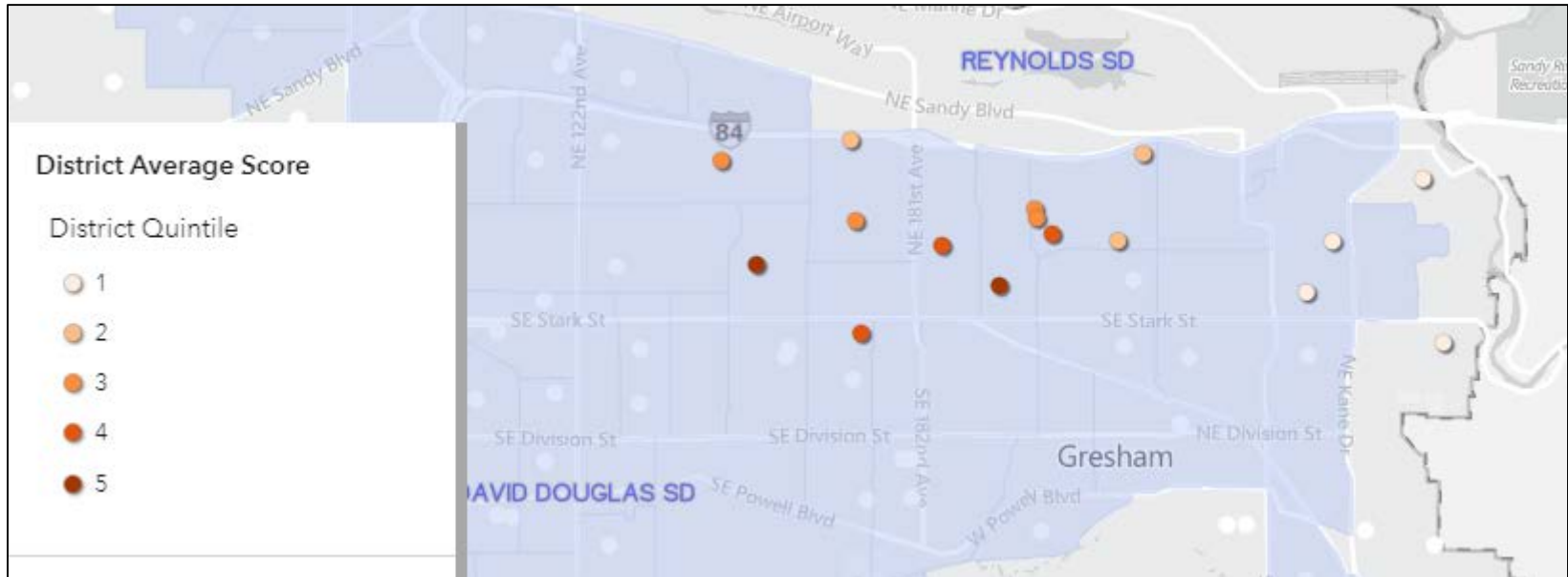
Viewing regional scores locally

Example: Reynolds School District

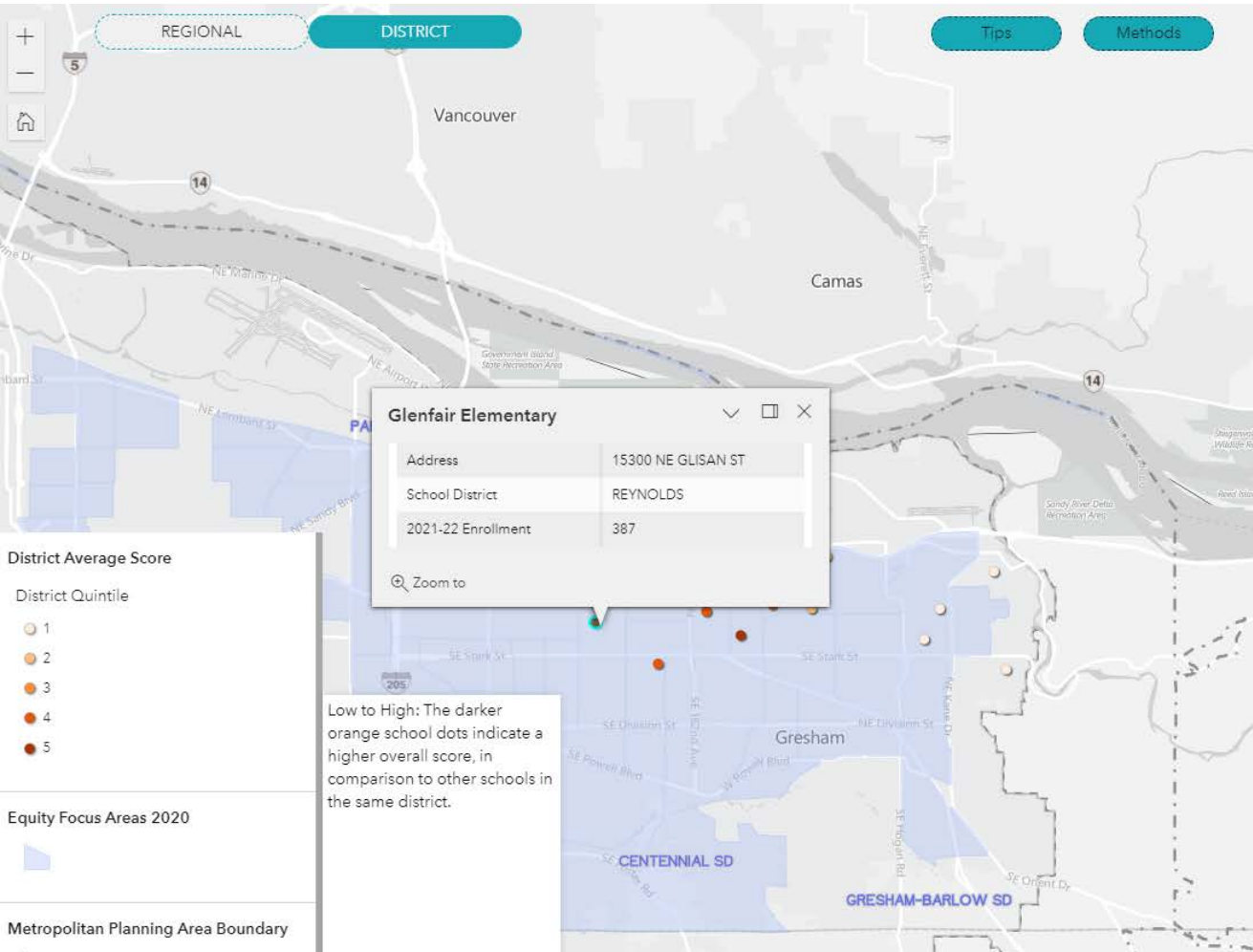


Viewing district level scores

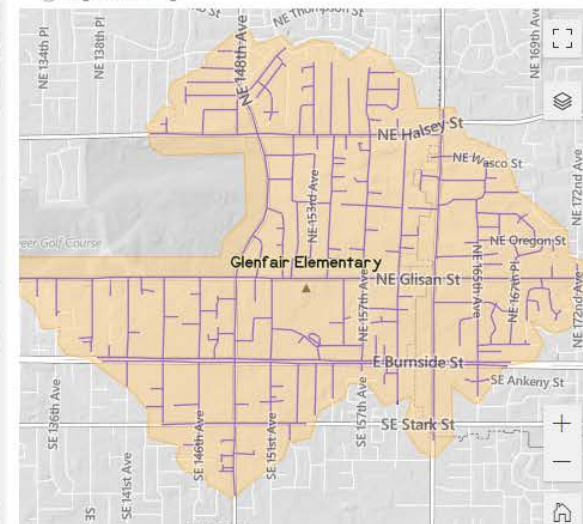
Example: Reynolds School District



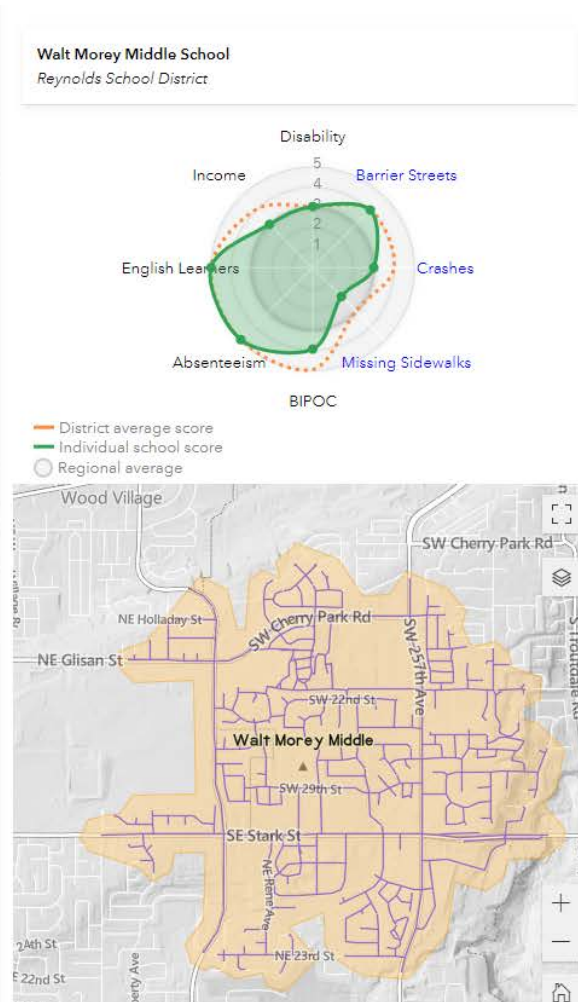
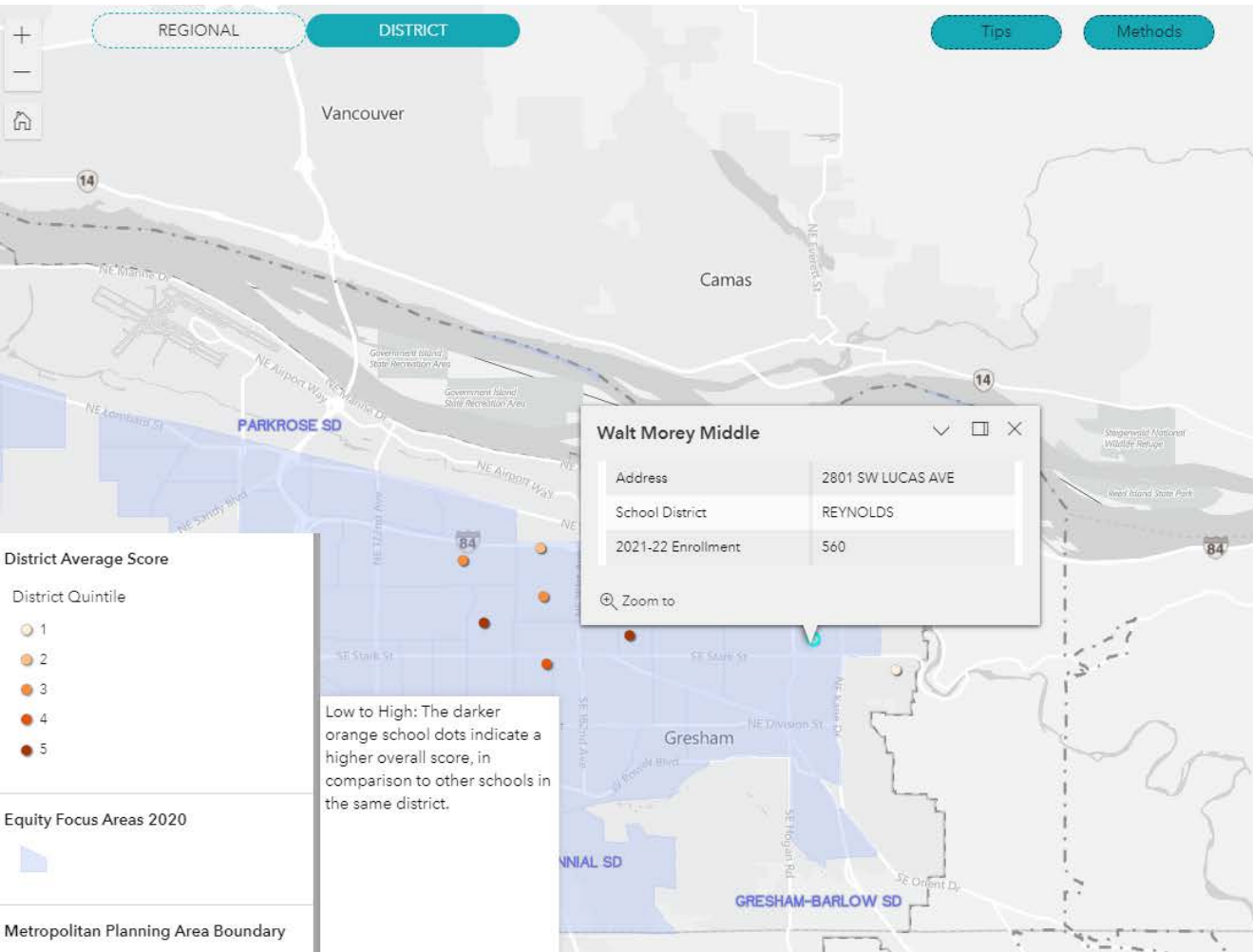
Viewing individual school data



Glenfair Elementary School
Reynolds School District



Viewing individual school data



New interactive map tool

Regional Safe Routes to School Walkshed Analysis



search for school or district

- Overall Score
- Absenteeism
- Barrier streets
- BIPOC
- Crashes
- Disability
- English learners
- Income
- Missing sidewalks
- Equity focus areas 2020
- MPA boundary
- School district boundaries
- Urban growth boundary (UGB)
- Map data

REGIONAL DISTRICT

Tips Methods

Lincoln St Elementary
Hillsboro School District

Disability
Income
Barrier Streets
English Learners
Absenteeism
Crashes
BIPOC

School quintiles
Regional average

Lincoln St Elementary
Address: 801 NE LINCOLN ST
School District: HILLSBORO
2021-22 Enrollment: 372

Equity focus areas 2020

MPA boundary

Metro Data Resource Center drc@oregonmetro.gov

Powered by Esri

The screenshot displays the 'Regional Safe Routes to School Walkshed Analysis' tool. On the left is a sidebar with a search bar and a list of 13 filterable categories: Overall Score, Absenteeism, Barrier streets, BIPOC, Crashes, Disability, English learners, Income, Missing sidewalks, Equity focus areas 2020, MPA boundary, School district boundaries, Urban growth boundary (UGB), and Map data. The main map area shows a regional view of Oregon school districts, with a pop-up window for 'Lincoln St Elementary' in Hillsboro. This window provides the address (801 NE Lincoln St), school district (Hillsboro), and 2021-22 enrollment (372). A legend indicates that green circles represent school quintiles and white circles represent regional averages. A radar chart for Lincoln St Elementary compares its performance across seven metrics: Disability, Barrier Streets, Crashes, BIPOC, Absenteeism, English Learners, and Income. The chart shows that Lincoln St Elementary scores in the 4th or 5th quintile for most metrics, indicating better performance than the regional average. An inset map shows the detailed street-level view of the Lincoln St Elementary walkshed, with streets like NE Main St and SE Baseline St visible.

<https://gis.oregonmetro.gov/schoolwalksheds/>

oregonmetro.gov

