



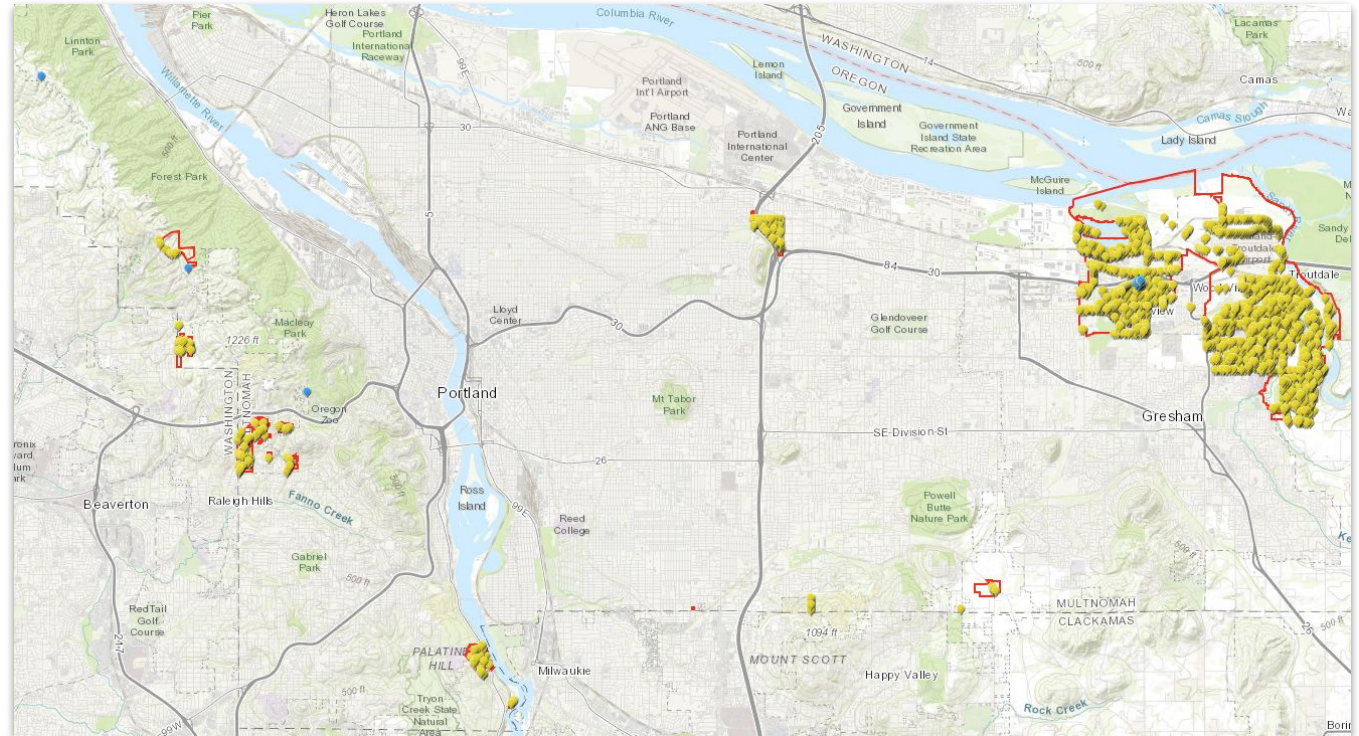
Mid-County Street Lighting District

Chet Hagen
EMCTC TAC
2/28/2024

Multnomah County -
DCS Asset Management

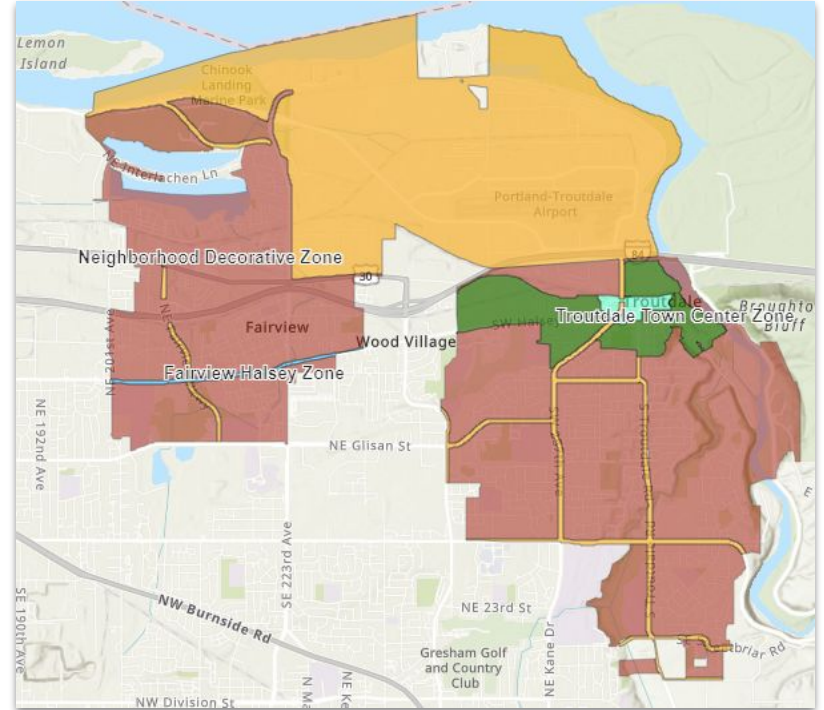
Service Area

- Troutdale
- Fairview
- Maywood Park
- Unincorporated



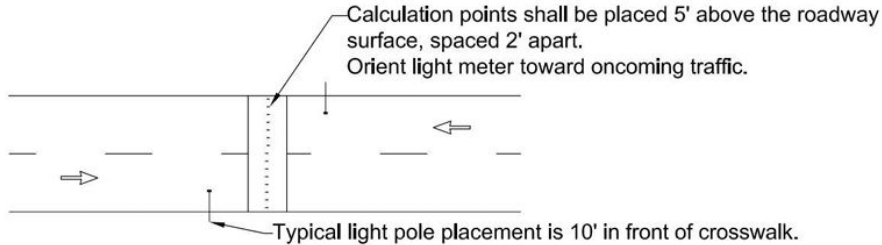
Stats & Governance

- MultCo Board is our Board
 - \$1.5M Budget, separate from County Budget
- Service District under Chapter 451 in ORS
- 2812 LED Street Lights
 - ~500 decorative
- 0 Full time staff
- All maintenance is contracted out



Governance cont.

- Administrative Rules
- Standard Details
- Lighting Level Review & Design Standards



A. The required light levels for roads within the District's service area and measured in Footcandles (Fc) are as follows:

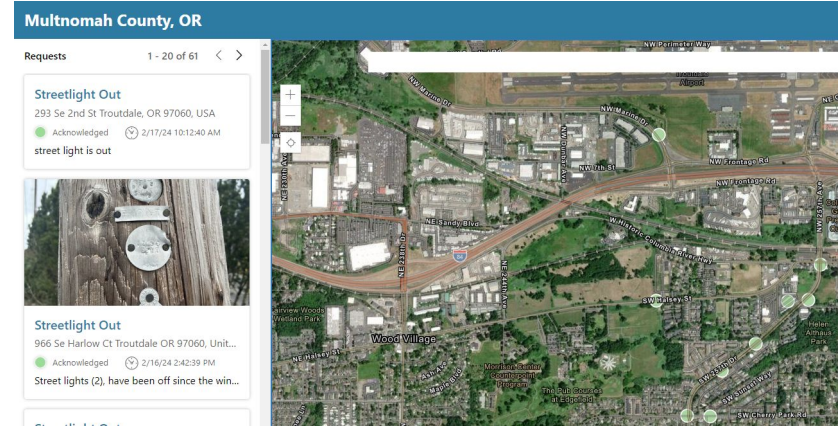
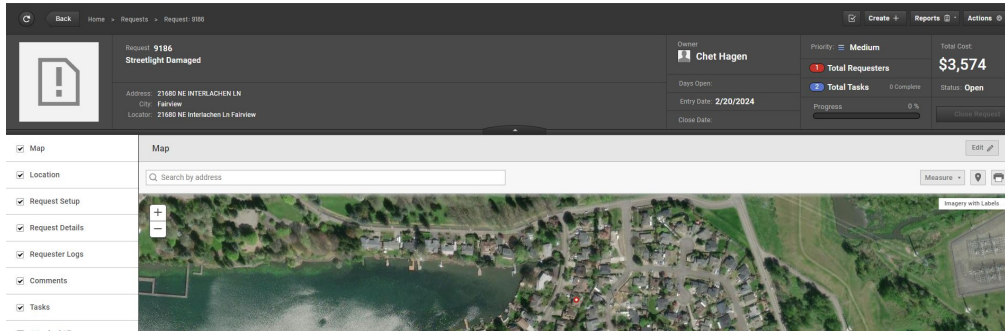
Functional Class	Pedestrian Activity ¹	Minimum Average Illuminance	Uniformity (Average to Minimum Ratio)
Arterial	High	1.7 Fc	3.0
	Medium	1.3 Fc	3.0
Collector	Medium	0.9 Fc	4.0
Local Residential	Medium	0.50 Fc	6.0
	Low	0.30 Fc	6.0

1. Reference ANSI/Illuminating Engineering Society's RP-08-18 Recommended Practice for Roadway Lighting to determine Pedestrian Activity



Operations and Maintenance

- SeeClickFix to report outages and damage
- Inventory Warehouse
- Electrical Service Contractors



Capital Projects

1. Development
2. Partner with County/Cities
3. District Funded



Signal Improvements

The County will install ADA-compliant accessible pedestrian signal push-buttons and upgraded pedestrian signal equipment.

Accessibility Improvements

The project will upgrade all sidewalk corners with Americans with Disabilities Act (ADA)-compliant curb ramps.

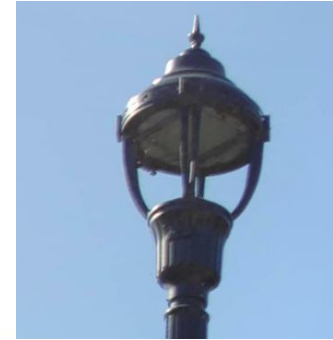
Lighting

Street lights will be replaced to improve visibility at night along S.W. 257th Dr. for all users.

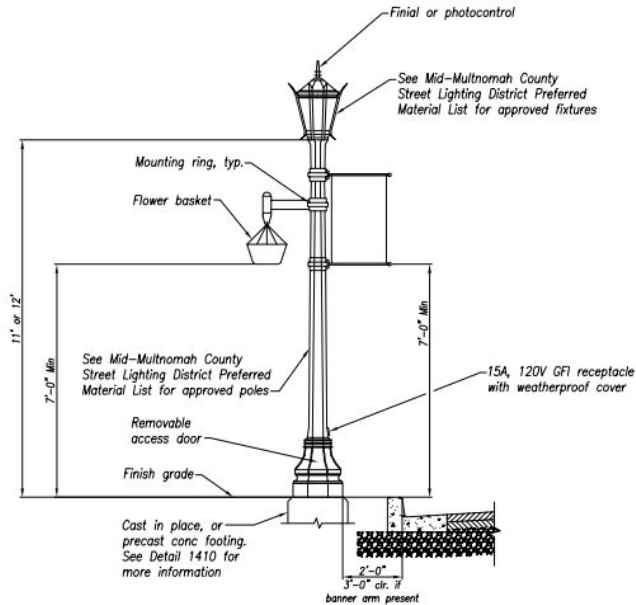


Miscellaneous

- 2 Power Utilities (PGE & Pacificorp)
 - Option C Municipal System
- Funded by Assessment on Property Taxes
- 18 Light Fixture Models
 - 5 Unique styles



Questions?



TROUTDALE HISTORIC DOWNTOWN POLE – DETAIL
SCALE: 1/4"=7'-0"

