



Multnomah County REACH Traffic Safety Report: At the Intersection of Transportation, Health, Race and Justice

Brendon Haggerty, MURP
Charlene McGee, MPA

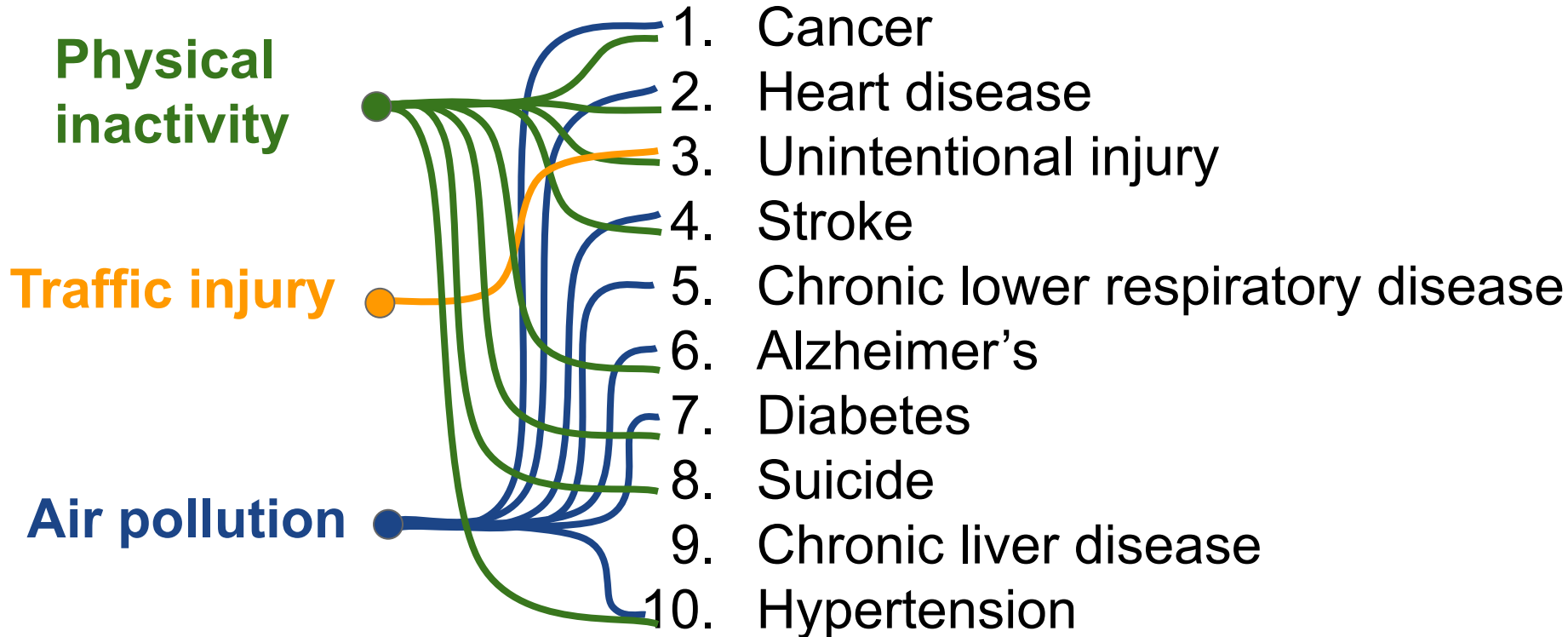
Last updated March 2021

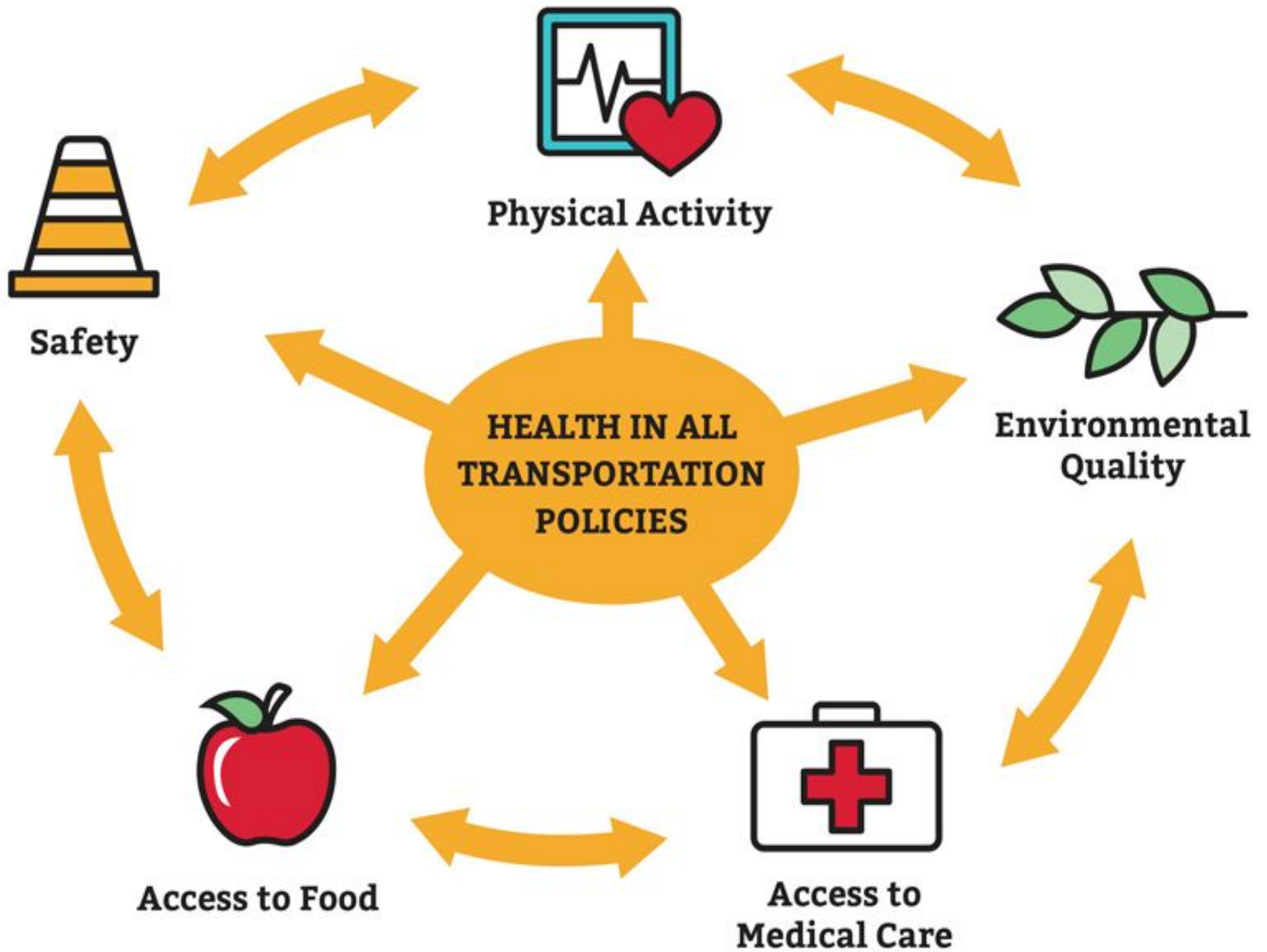
We want to **acknowledge** that the data presented in this report represent real people – members of our community. These individuals are sisters, brothers, mothers, fathers, and friends in our county.



Multnomah County 10 Leading Causes of Death in Connection to Built Environment

Leading causes of death in Multnomah County 2014-2018





Safety Outcomes: Six Domains

Fatal injury

Non-fatal injury

Biased
behavior
among road
users

Biased policing

Harassment

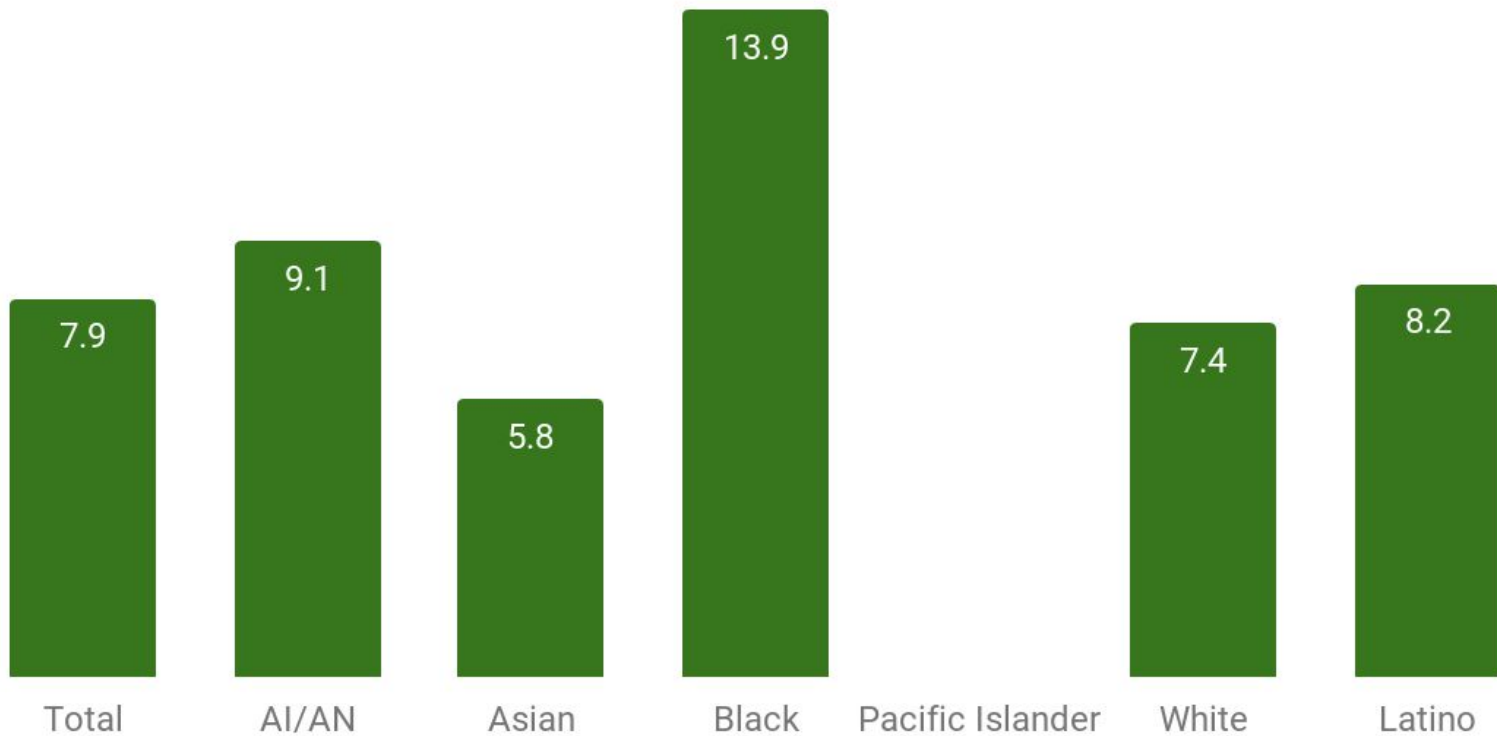
Violent crime



Safety Outcomes: Fatal Injury

Transport death rates by race and ethnicity in Multnomah County 2013-2017

Age-adjusted rate per 100,000 population

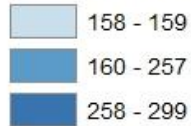


Data source: Oregon Death Certificates

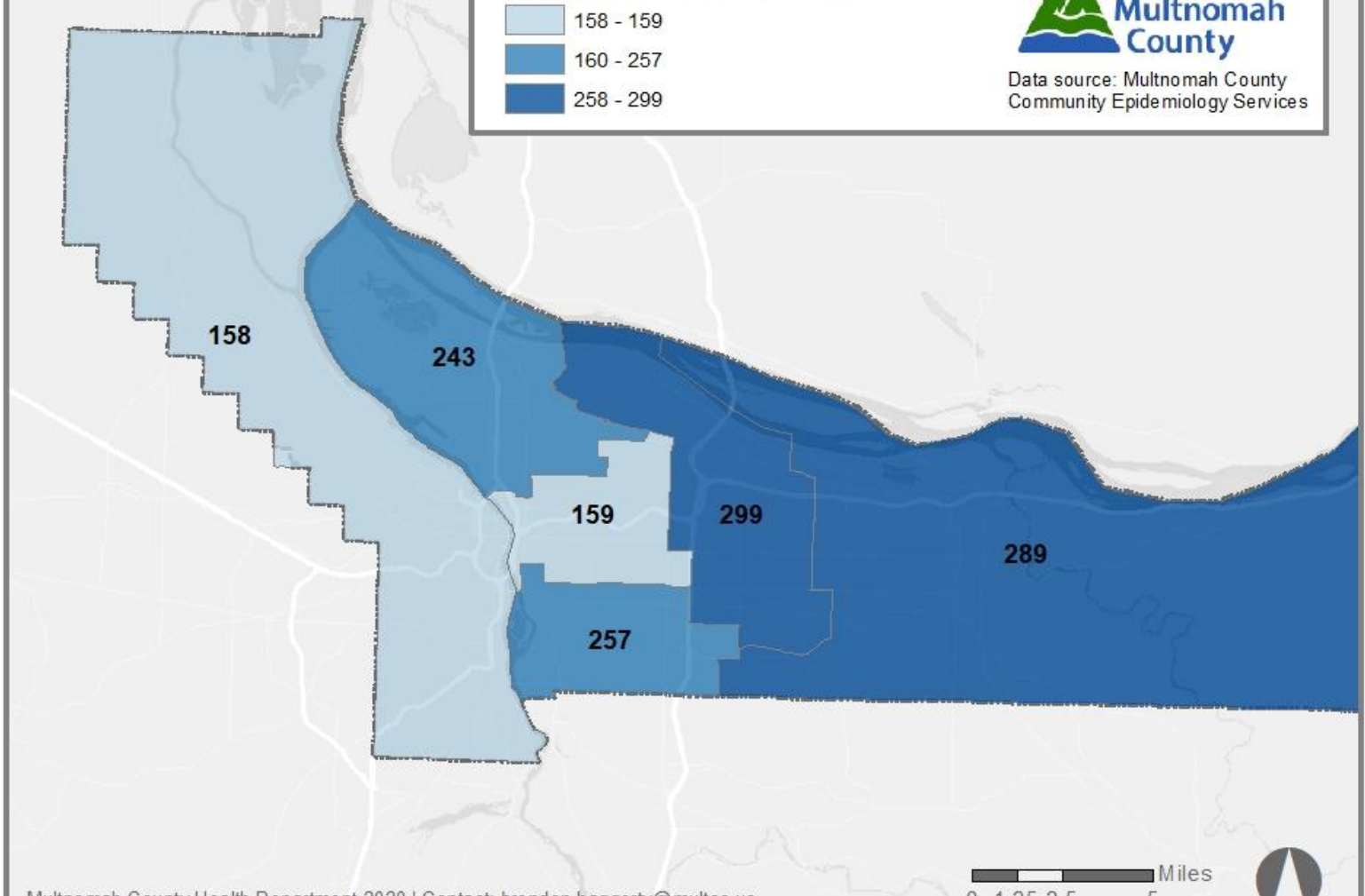


Years of Potential Life Lost from Traffic Injuries

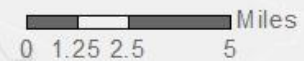
YPLL per 100,000 (2008-2017)



Data source: Multnomah County
Community Epidemiology Services

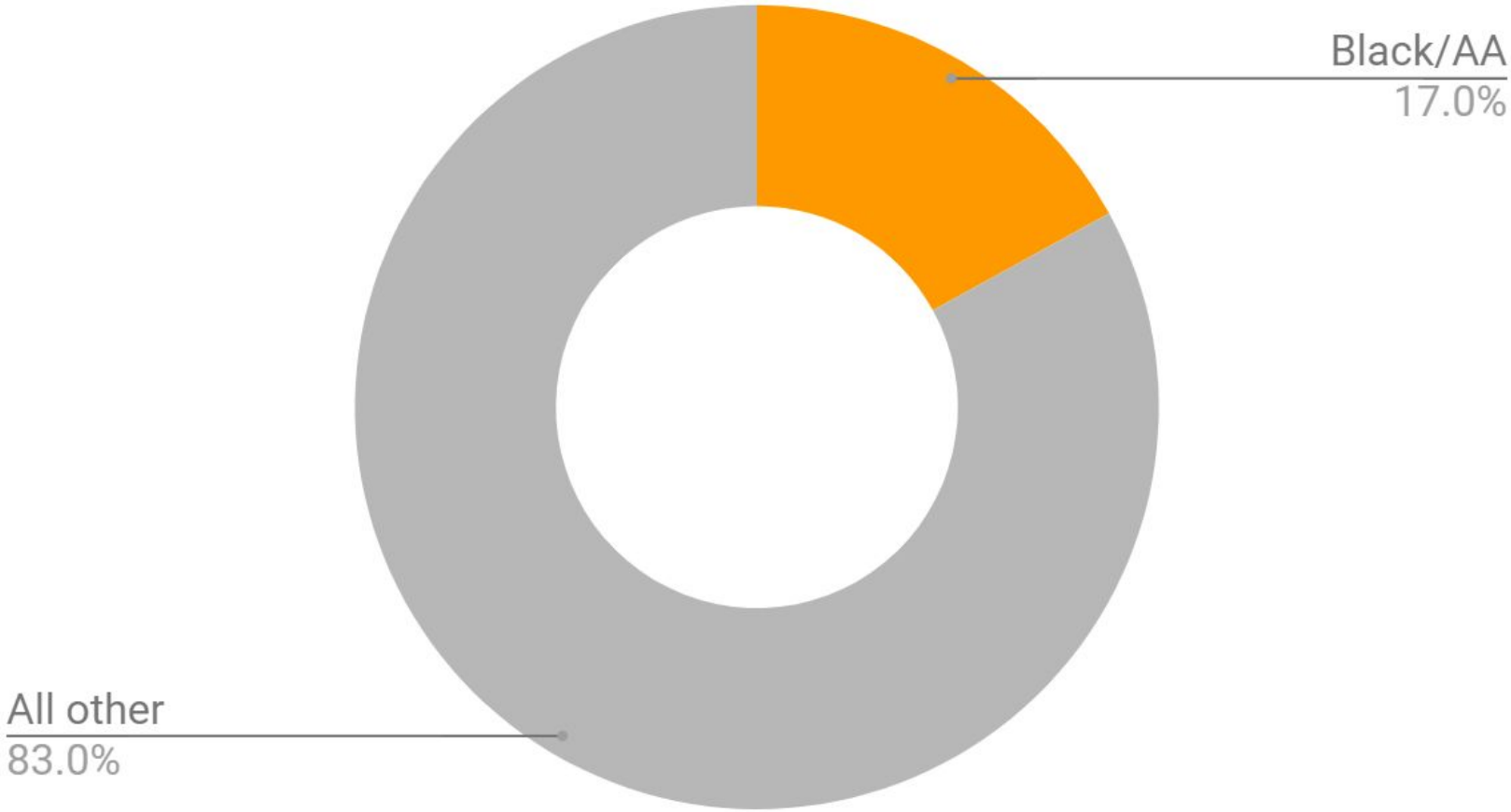


Multnomah County Health Department 2020 | Contact: brendon.haggerty@multco.us



Safety Outcomes: Non-Fatal Injury

Percent of Emergency Dept visits for transport injuries

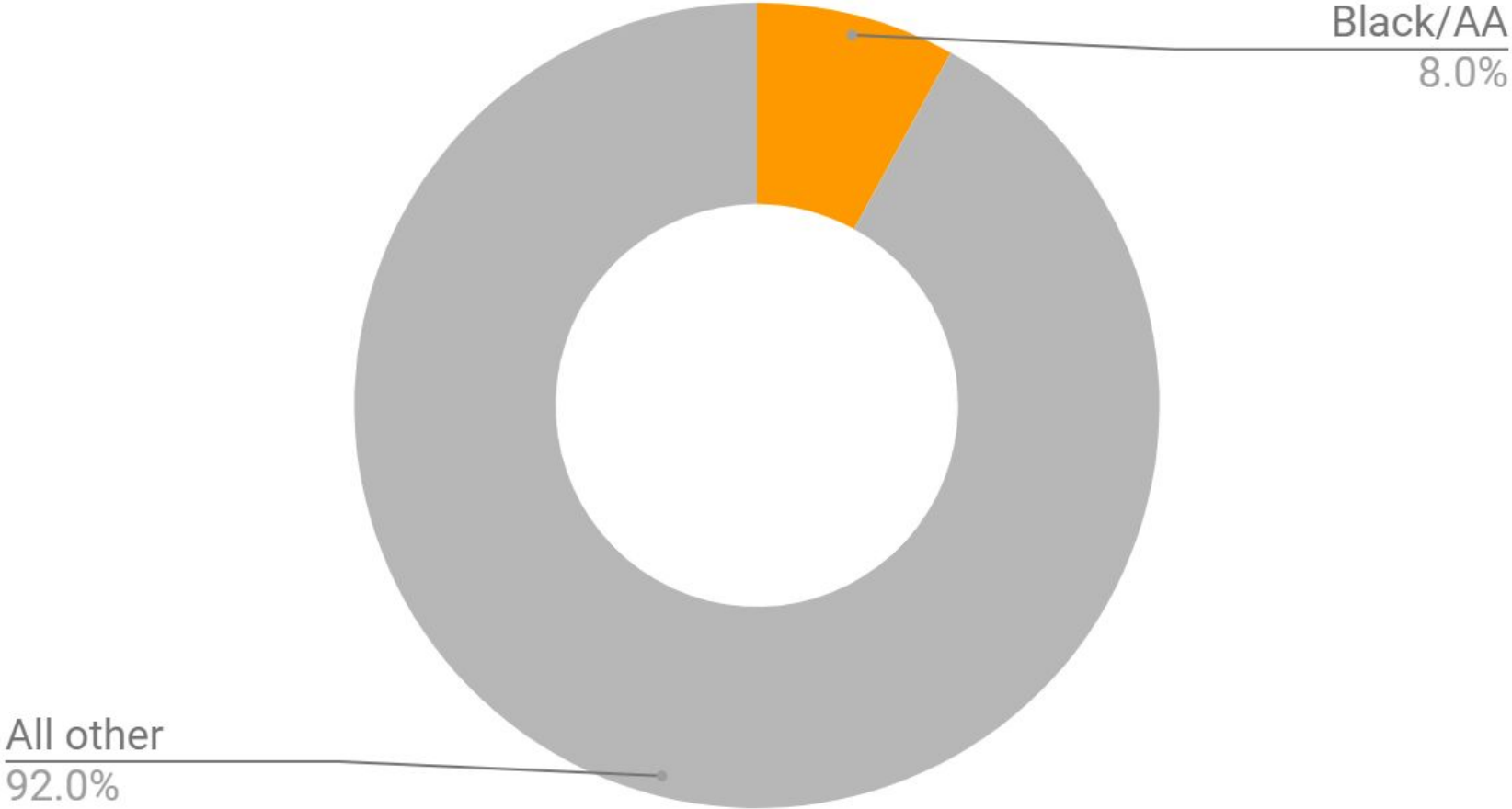


Data source: Oregon ESSENCE



Safety Outcomes: Non-Fatal Injury

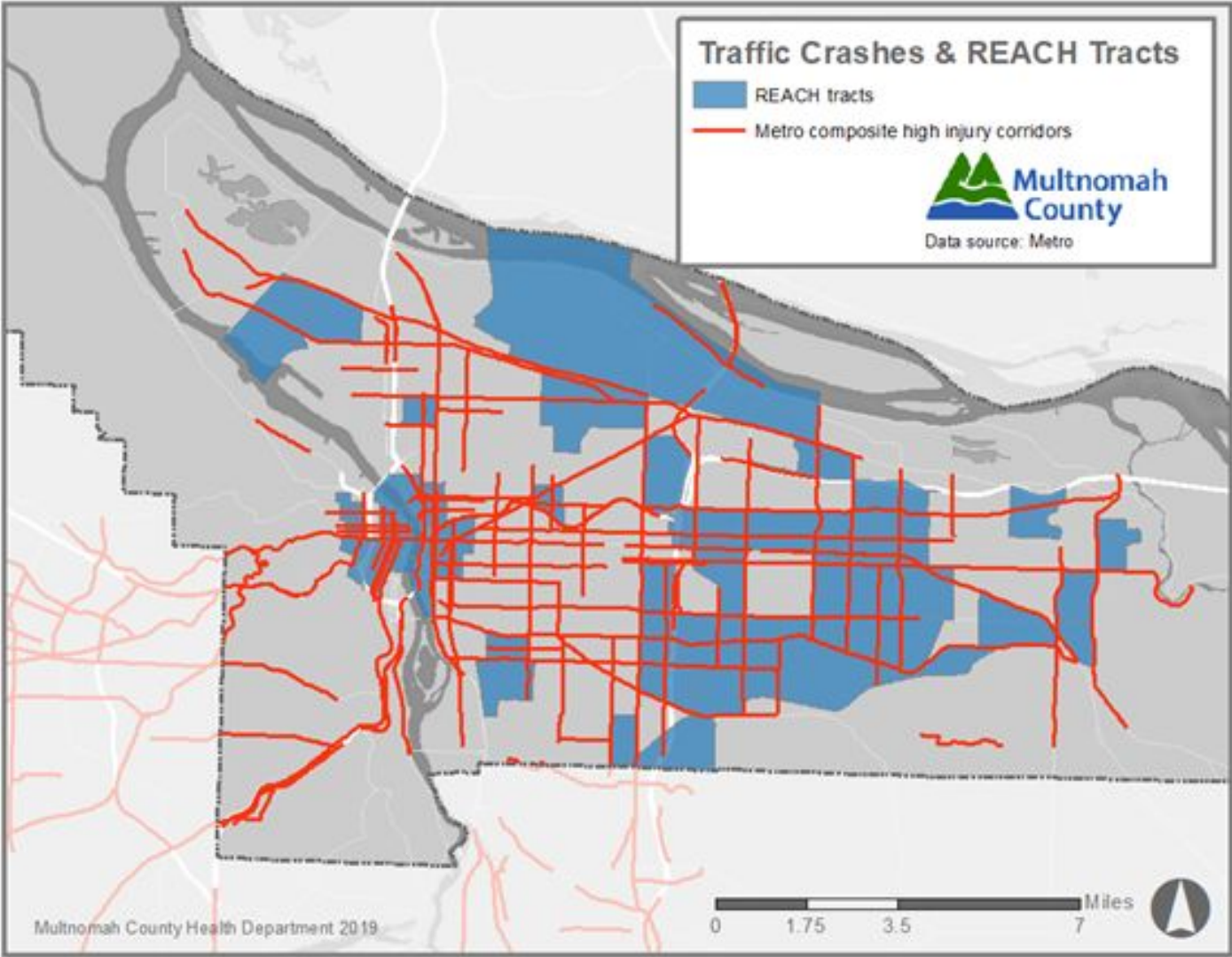
Multnomah County Population



Data source: US Census Bureau



Safety Outcomes: Non-Fatal Injury



Safety Outcomes: Biased Behavior Among Road Users

“White people not sharing the sidewalk, expecting Black people to step out of their way instead of moving right to make space mutually, respectfully.”

“Crosswalk White girl magic - where cars stop for White women, not for Black people.”

“When you’re Black [anywhere in Portland], you have to make sure that you are extra careful when crossing the street or using the crosswalk.”



Safety Outcomes: Biased Policing

20%

In a study of 100 million traffic stops, black drivers were 20% more likely to be stopped than white drivers.

4x

In Multnomah County, Black or African American adults were 4 times as likely to enter the criminal justice system.



Safety Outcomes: Harassment

Incident count by location



Data source: Portland Police Bureau



Safety Outcomes: Violent Crime



Local | News

Closing Arguments Get Underway In MAX Stabbing Trial

by Conrad Wilson [Follow](#) OPB Feb. 19, 2020 6 a.m. | Updated: F

Jurors are set to hear closing arguments Wednesday in the trial of a man accused of murdering two people on a Portland MAX streetcar.

The stabbings occurred after Jeremy Christian delivered a racist, hate-filled speech to a group of two black teens – one of whom was killed.

Man out of jail after alleged hate crime on streetcar

Pamplin Media Group Tuesday, March 05, 2019

Portland Police arrest Ian Schmidt after allegedly hearing him yell 'racial slurs' downtown.

BLOGTOWN

NEWS

Man Sentenced to Life in Prison for Racially-Motivated Murder of Larnell Bruce

by [Alex Zielinski](#) · Apr 16, 2019 at 11:05 am

part because they occurred as hate



Free 3-
with sp
Start

RE



Health Impact





Shutterstock

CITIES

"Biking while black" is a thing, too

By Heather Smith on Jan 13, 2015



KATU 2 abc NEWS WEATHER CORONAVIRUS LIFESTYLE CHIME IN WATCH

Report finds PPB officers stop Black people at higher rate, bureau plans changes in 2021

by KATU Staff | Thursday, November 19th 2020



OPB FEB. 20, 2021

In The News Oregon winter storm COVID-19 relief package Black farming in Oregon Gun laws Climate change

Portland has 5th worst arrest disparities in the nation, according to compiled data

By Jonathan Levinson (OPB)
Feb. 7, 2021 9:23 a.m.

Portland has some of the highest compiled data.

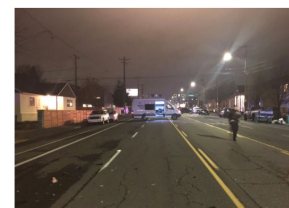
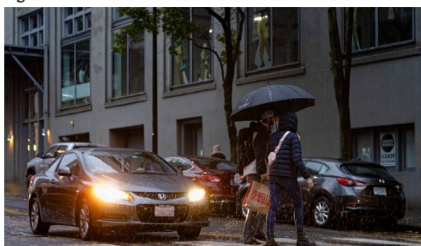
54 people killed in Portland traffic crashes in 2020 – the most since 1996 – despite the pandemic

Updated Jan 06, 2021. Posted Jan 06, 2021

WILLAMETTE WEEK NEWS RESTAURANTS BARS MUSIC ART

Black Portlanders Are Killed Crossing the Street at Three Times the Rate of White Pedestrians

The pedestrian death rate per 100,000 was three times higher east of 82nd Avenue than it was west of 82nd.



Advertisement

STREAM AD-FREE FOR \$6.99/MO.

discovery+ subscribe now

OPB FEB. 20, 2021

In The News Oregon winter storm COVID-19 relief package Black farming in Oregon Gun laws Climate change

In Portland, Black drivers make up 18% of traffic stops, 5.8% of population

By Jonathan Levinson (OPB)
Nov. 27, 2020 6 a.m. Updated: Nov. 27, 2020 9:16 a.m.

Black people in Portland were dramatically more likely to be stopped by police in 2019 than their non-Black counterparts, according to data recently released by the Portland Police Bureau.

Of the 33,035 vehicle stops Portland police made in 2019, 18% were for Black drivers and 65% were for white drivers. Meanwhile, white people make up 75.1% of the population, while Black people make up only 5.8%.

The discrepancy is even greater for nonmoving violation stops, a category for which the report says officers have more room for discretionary judgement. Black people accounted for 22.6% of those stops compared to 62% for white people.



Black Portlanders Are Killed Crossing the Street at Three Times the Rate of White Pedestrians

The pedestrian death rate per 100,000 was three times higher east of 82nd Avenue than it was west of 82nd.



Portland MAX Stabbing Victims Call Out Racist System During Sentencing Hearing



By Meerah Powell (OPB) June 23, 2020 1 p.m.

Only about a half-hour into his sentencing hearing Tuesday, Jeremy Christian was escorted out of the courtroom for an outburst.

Christian was convicted of stabbing and killing two men and injuring a third on a MAX light rail train in Portland in 2017. After a four-week trial earlier this year, a jury found him guilty on 12 counts, including murder and attempted murder, as well as assault and hate crimes.

"I should've killed you, bitch" Christian yelled at Demetria Hester, a Black woman he assaulted a

Before George Floyd's Death, Black Portlanders Were Killed by Cops at a Disproportionate Rate

"What happened this summer was not a new item for the black community—it was a new item for the white community."



Black Portlanders Are Still Disproportionately Stopped While Driving and Walking

Traffic stops are the most common way police interact with the public.



Northeast Portland's Madison South neighborhood. (Trevor Gagnier)

Cost of Health Inequalities in Multnomah County

**\$442
million**

Estimated annual economic burden of health inequalities

**\$332
million**

in cost of premature mortality

**\$92
million**

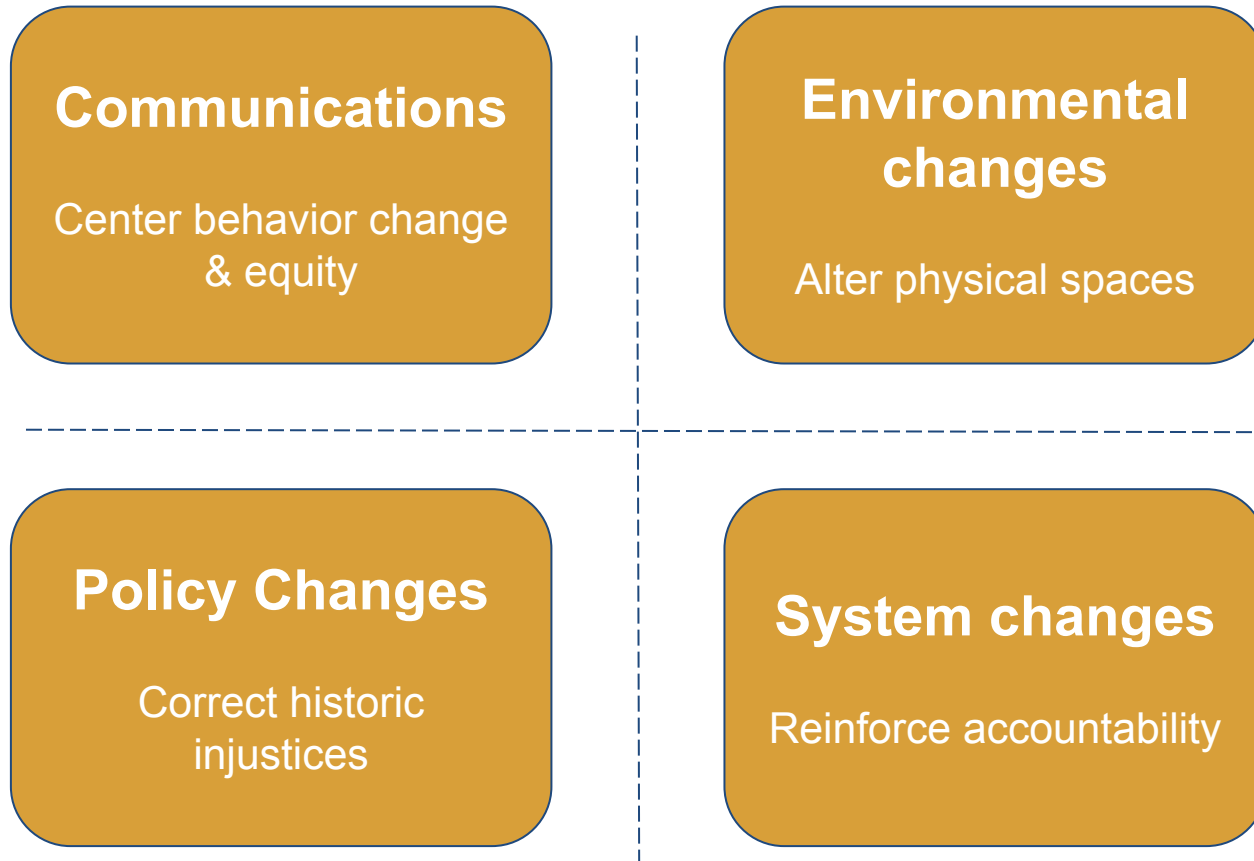
in direct health care costs

**\$18
million**

in indirect costs of illness



Recommendations: CPSEs



**Discussion, Questions,
Comments & Next Steps**

THANK YOU!

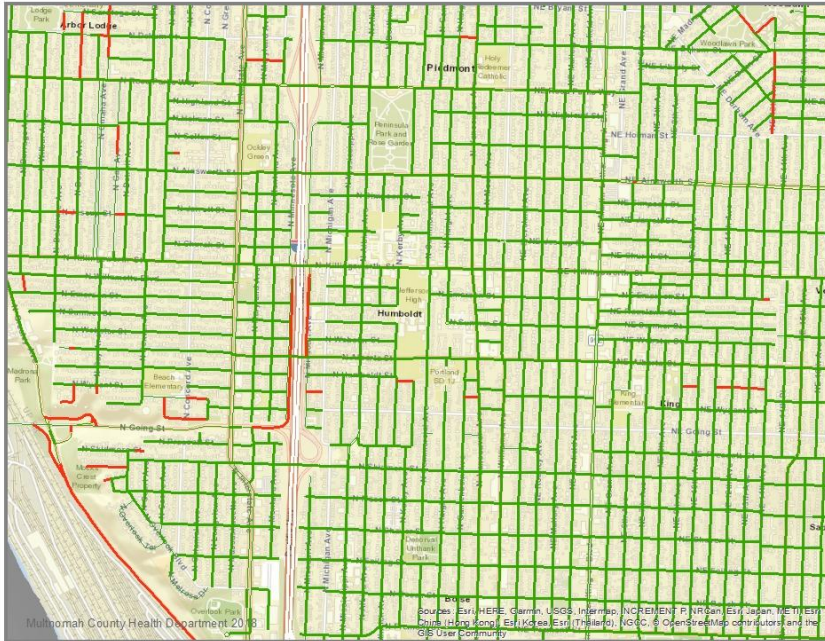


The following slides are for reference only



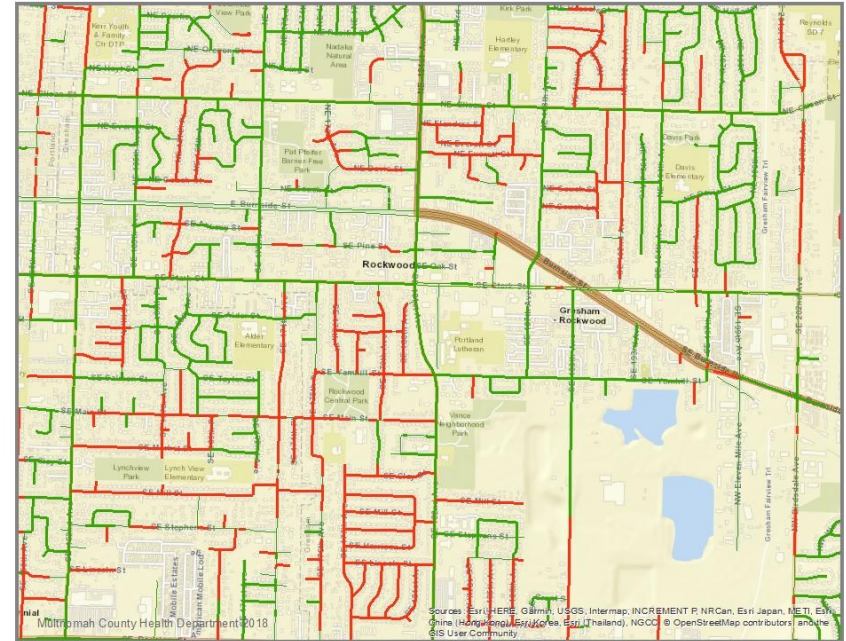
Safety Outcomes: Non-Fatal Injury

Humboldt



~233 intersections per square mile

Rockwood



~80 intersections per square mile

