

Regional Grants - Applications

Multnomah County, Gresham, Troutdale

East Multnomah County Transportation Committee

City of Fairview

City of Gresham

City of Troutdale

City of Wood Village

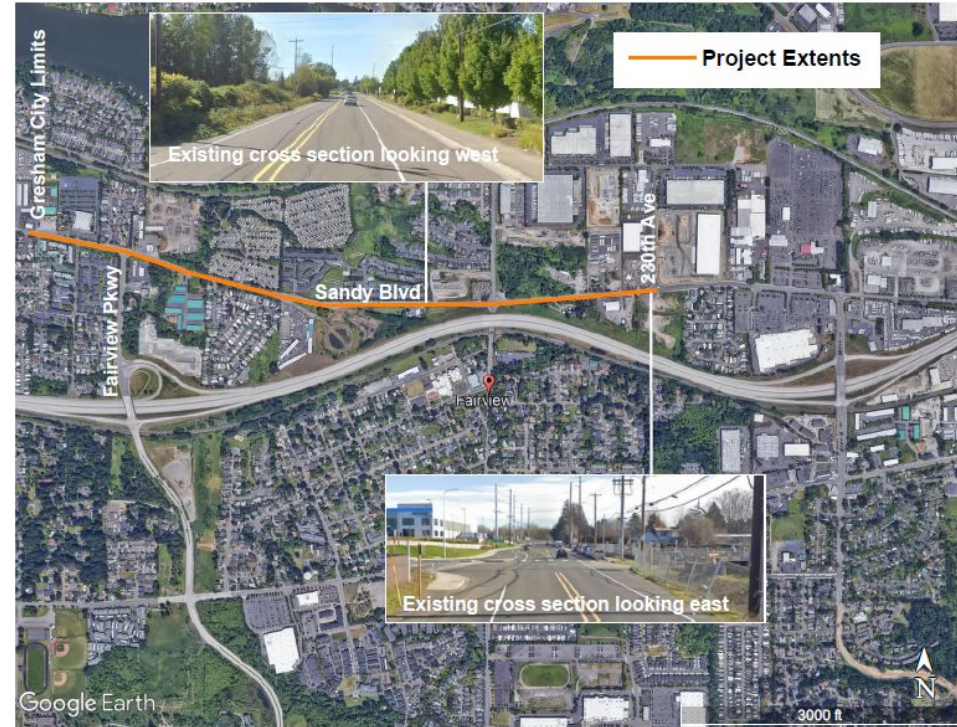
Multnomah County

Port of Portland

RFFA - Multnomah County

Funds to construct sidewalks and bike lanes the length of Sandy from Gresham City limits to 230th.

Multnomah County has RFFA funds for design, which will begin in 2024



RFFA Multnomah County

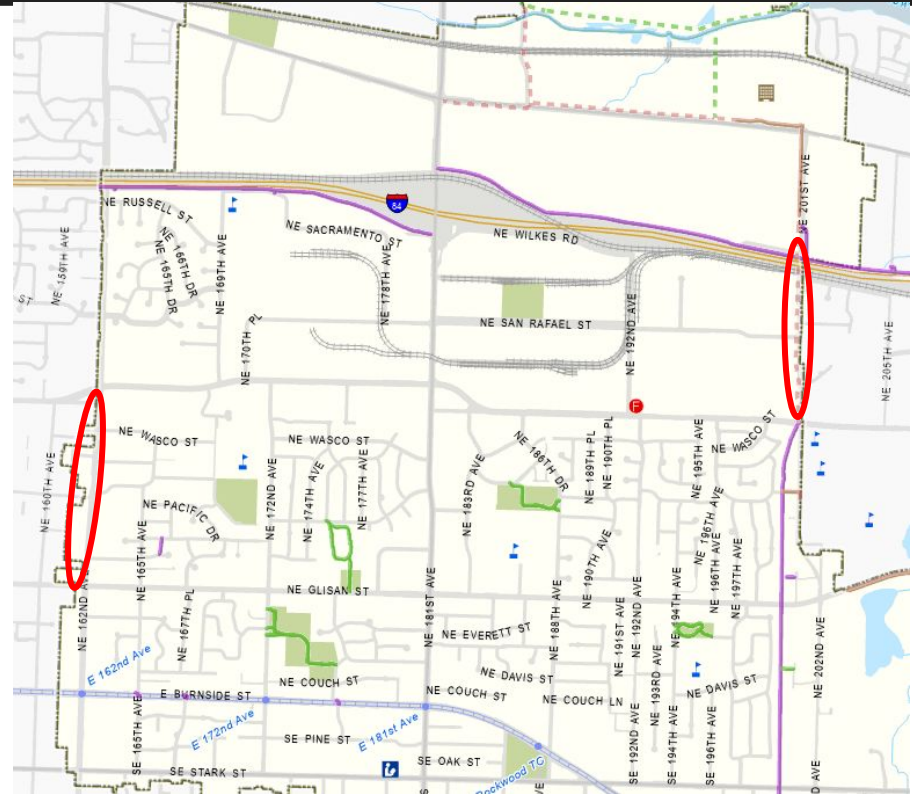
Multnomah County is requesting funds to design a new fish passage culvert, sidewalks, and bike lanes along this corridor.



RFFA – Gresham Projects

Regional Flexible Funds Allocation

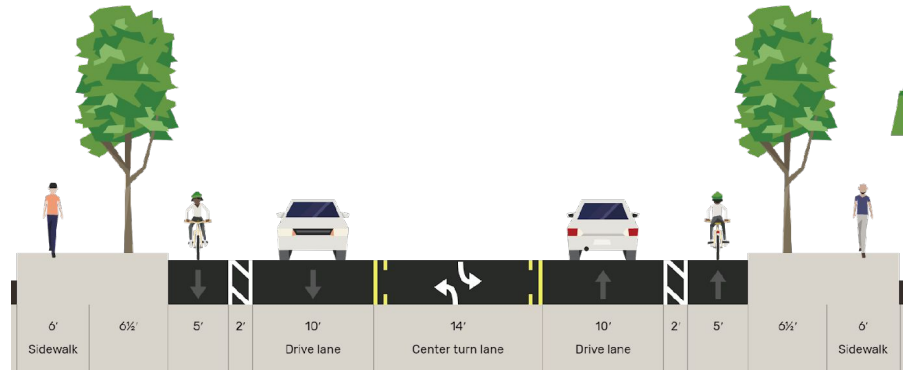
- 162nd Avenue
Complete street, sidewalk, bike lanes
- Gresham Fairview Trail Gap
Path along 201st



RFFA – Gresham Projects

162nd Avenue

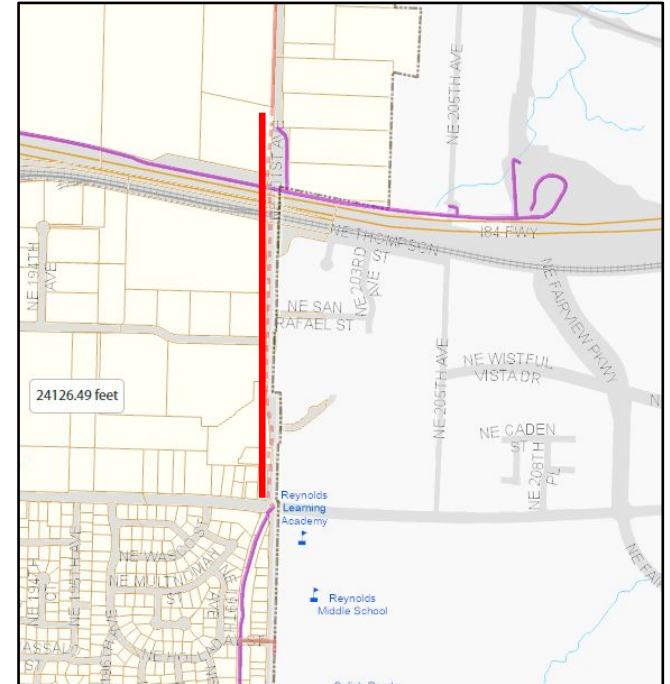
- Glisan Street to Halsey Street
- Complete street: sidewalk, buffered bike lanes



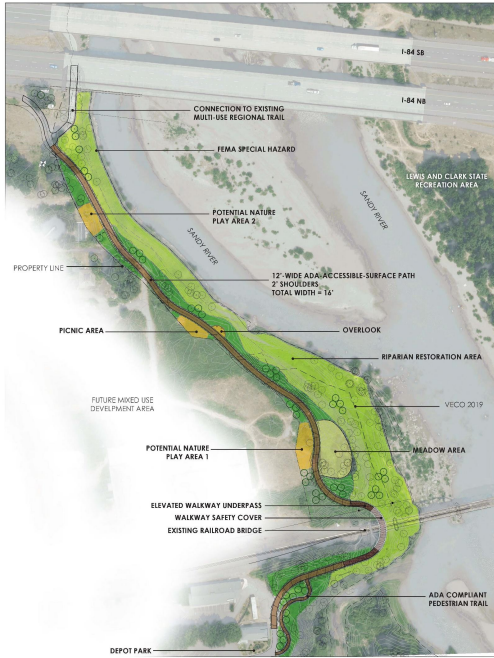
RFFA – Gresham Projects

Gresham-Fairview Trail

- Halsey Street to Sandy Boulevard, along 201st Avenue
- Extends GFT to I-84 Trail and Sandy Boulevard segment

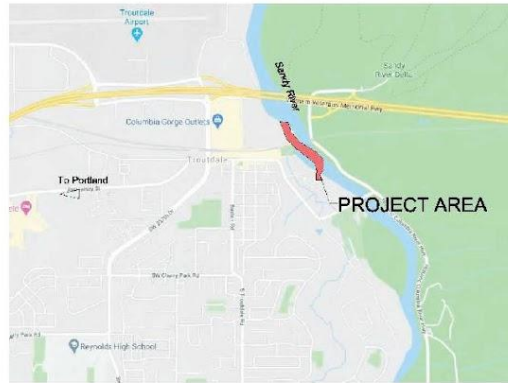


Confluence/Sandy Riverfront Trail



SANDY RIVER ACCESS TRAIL : 30% DESIGN PLAN

Marianne Zankin
LANDSCAPE ARCHITECT



VICINITY MAP
Not to Scale

- ¼ mile section
- Multi-Use Path & Park
- I-84 trail to Depot Bike Hub/Town Center
- 40-Mile Loop
- 60% Design Plan Complete

Plans

- Troutdale Riverfront Renewal Plan, 2006
- Parks Master Plan, 2006
- Sandy River Access Plan, 2014
- Transportation System Plan, 2014
- Town Center Plan, 2020
- Capital Improvement Plan, 2016
- 40-Mile Loop: Troutdale to Gresham Alignment Study, 2017
- East Metro Connections Plan, 2018