

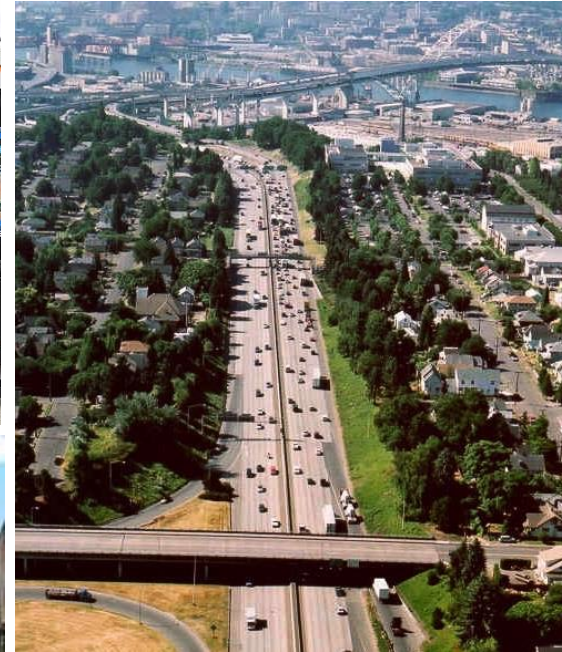
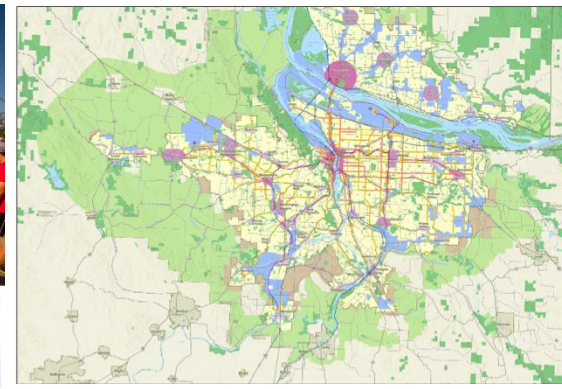
# 2023 Regional Transportation Plan update

East Multnomah County  
Transportation Committee  
November 15, 2021

Kim Ellis, RTP Project Manager



Metro



# Today's purpose


## Hear from EMCTC on these questions:

1. Do you have feedback on the proposed process?
2. What policy outcomes are most important for this update to address?
3. Do you have suggestions on outreach and engagement for update?
4. Other feedback?

# What is the Regional Transportation Plan? (RTP)

## 20+ year transportation plan

- Required by federal law and according to federal regs
- Required under Oregon's statewide planning goals
- Links land use and transportation
- Guides local transportation plans under statewide goals
- Updated every 5 years



**2018 Regional Transportation Plan**

*A blueprint for the future of transportation in the greater Portland region*

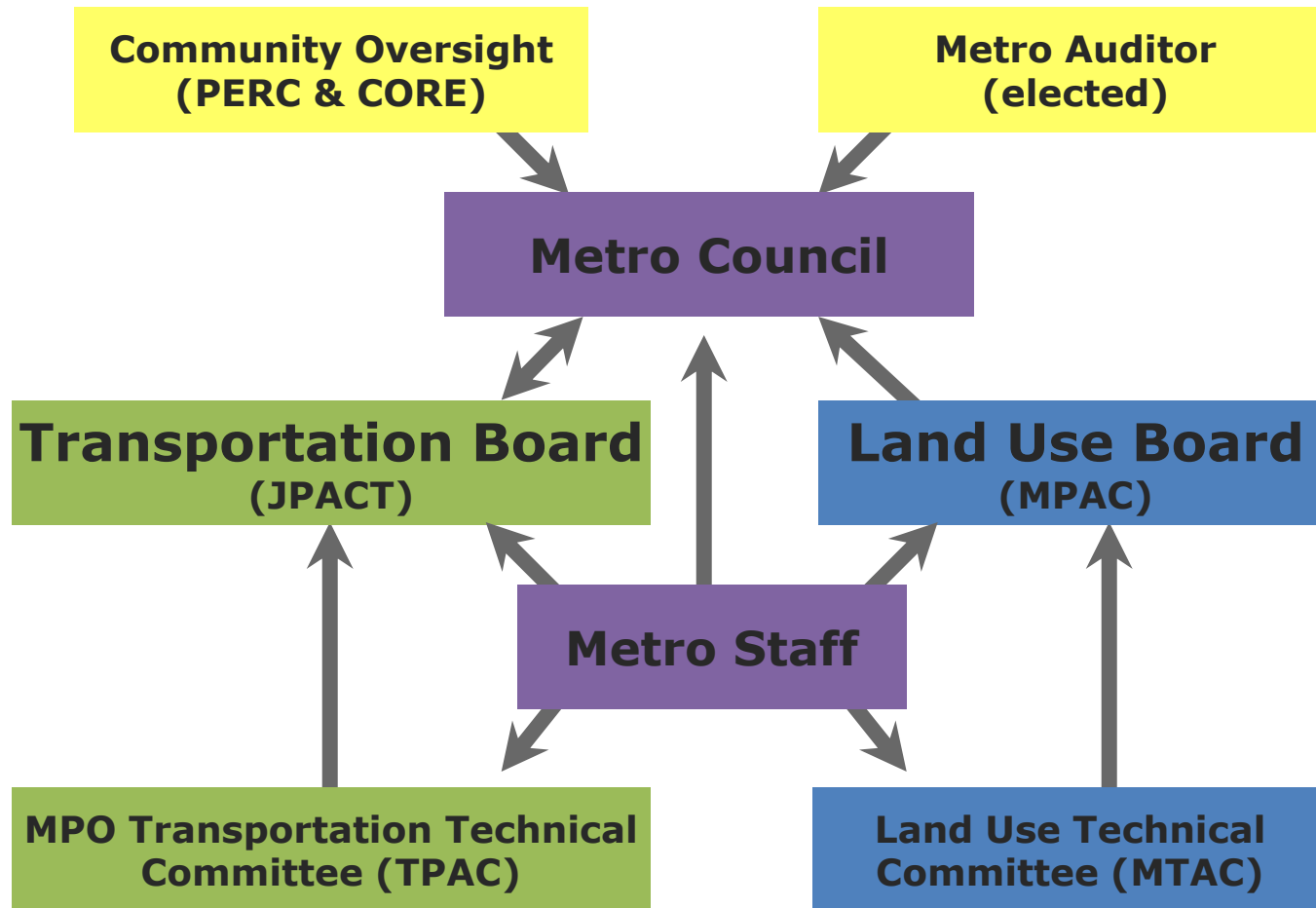
Adopted December 6, 2018 [oregonmetro.gov/rtp](http://oregonmetro.gov/rtp)

# Why is it important?

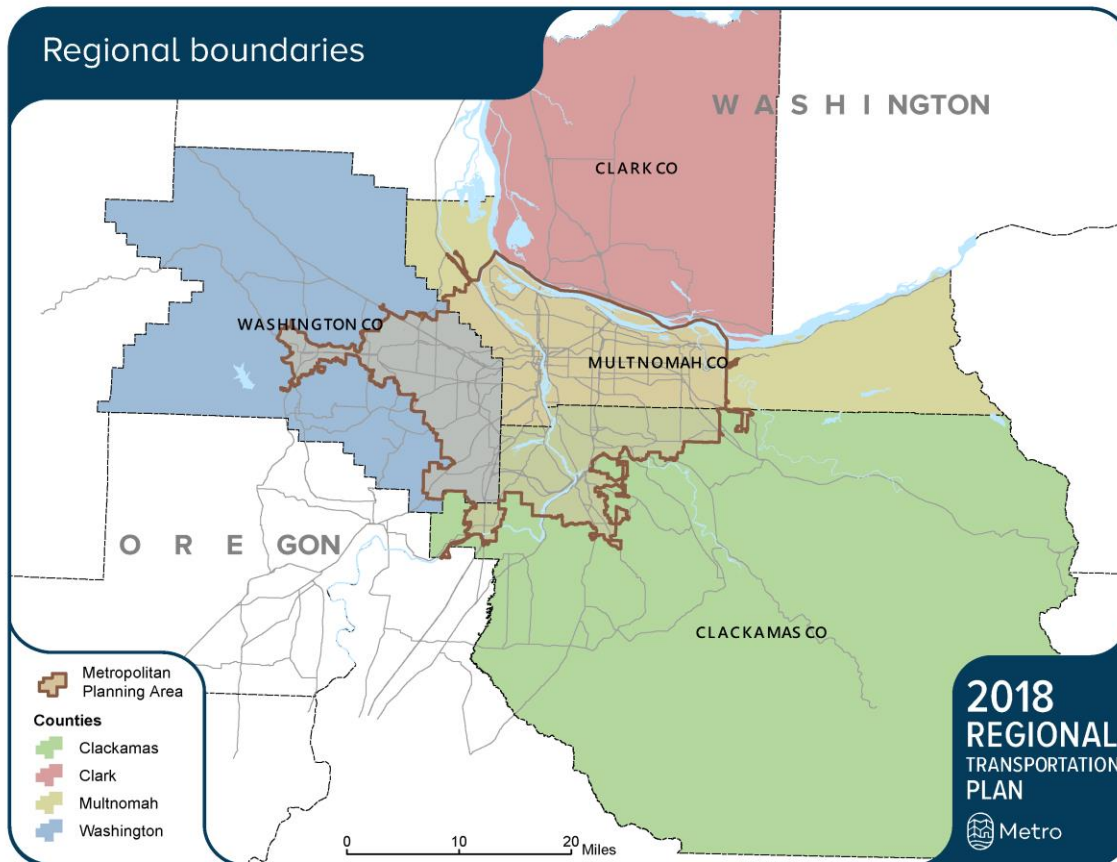
- Blueprint to guide investments in the region's transportation system
- Sets the stage for what communities will look like in the future
- Coordinates local, regional, and state investment priorities and actions
- Projects must be in the RTP to be eligible for federal and some state funding



# Regional decision-making process



# Metropolitan Planning Area



**1.6 million people  
(today)**

**More than 2 million  
people (by 2045)**

**24 cities**

**3 counties**

**Bi-state region**

Note: The MPA boundary will be updated to reflect the 2020 Census.

# A shared regional system

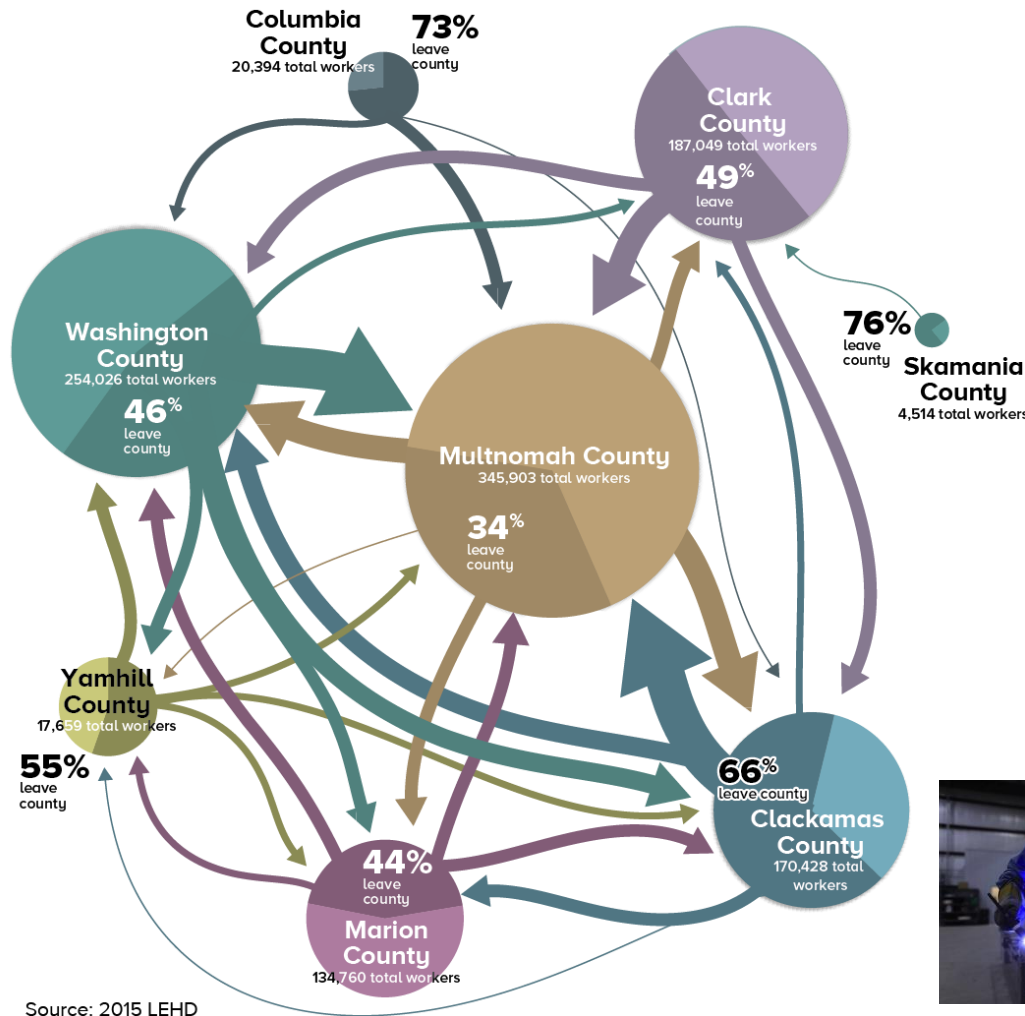


Donald from Forest Grove

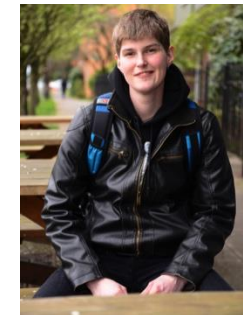


C.J. from Tualatin, with his daughter

Robert and Becky from SW Portland



Michael from Gresham



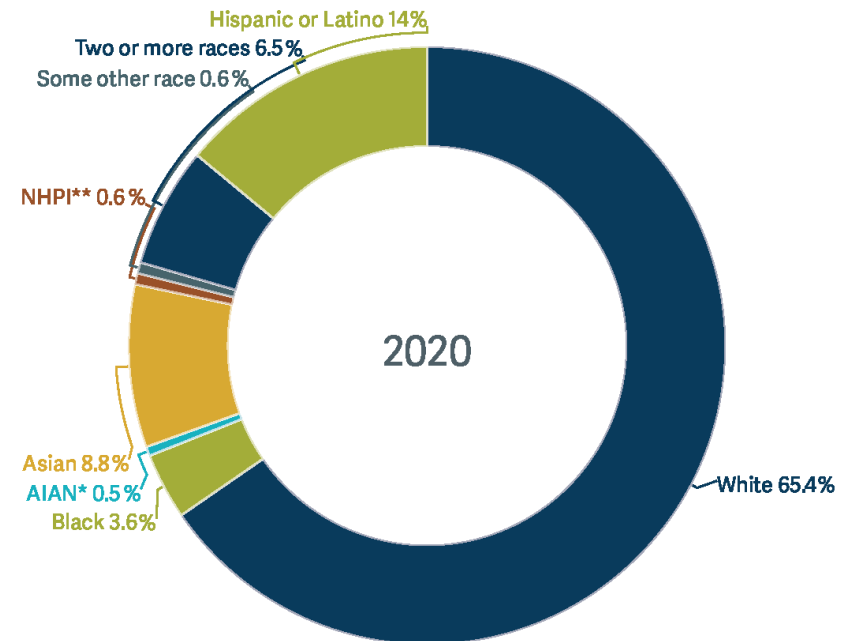
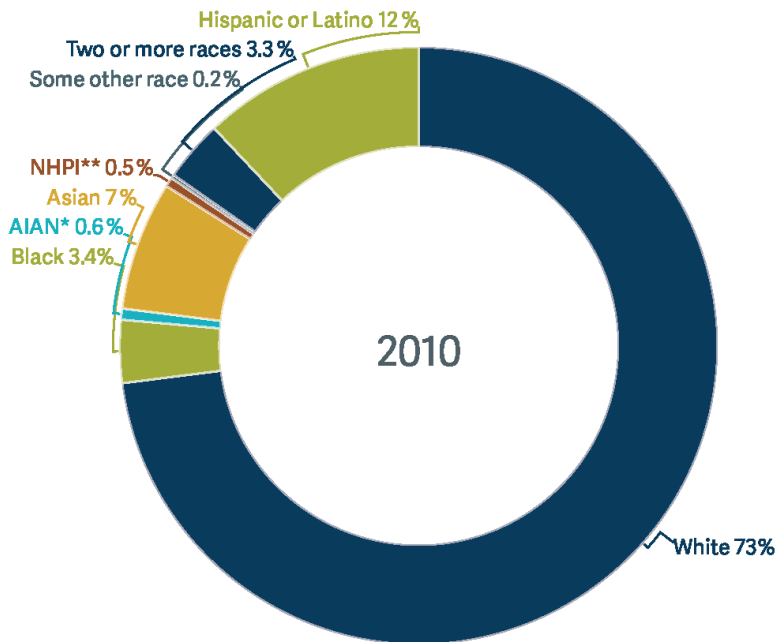
Chris from SE Portland



Bob from Milwaukie

# Our population – and communities - continue to grow and change

People living within the Portland Metropolitan Planning Area (MPA) boundary, 2010 and 2020



\*AIAN: American Indian or Alaskan Native  
\*\*NHPI: Native Hawaiian or Pacific Islander

\*AIAN: American Indian or Alaskan Native  
\*\*NHPI: Native Hawaiian or Pacific Islander

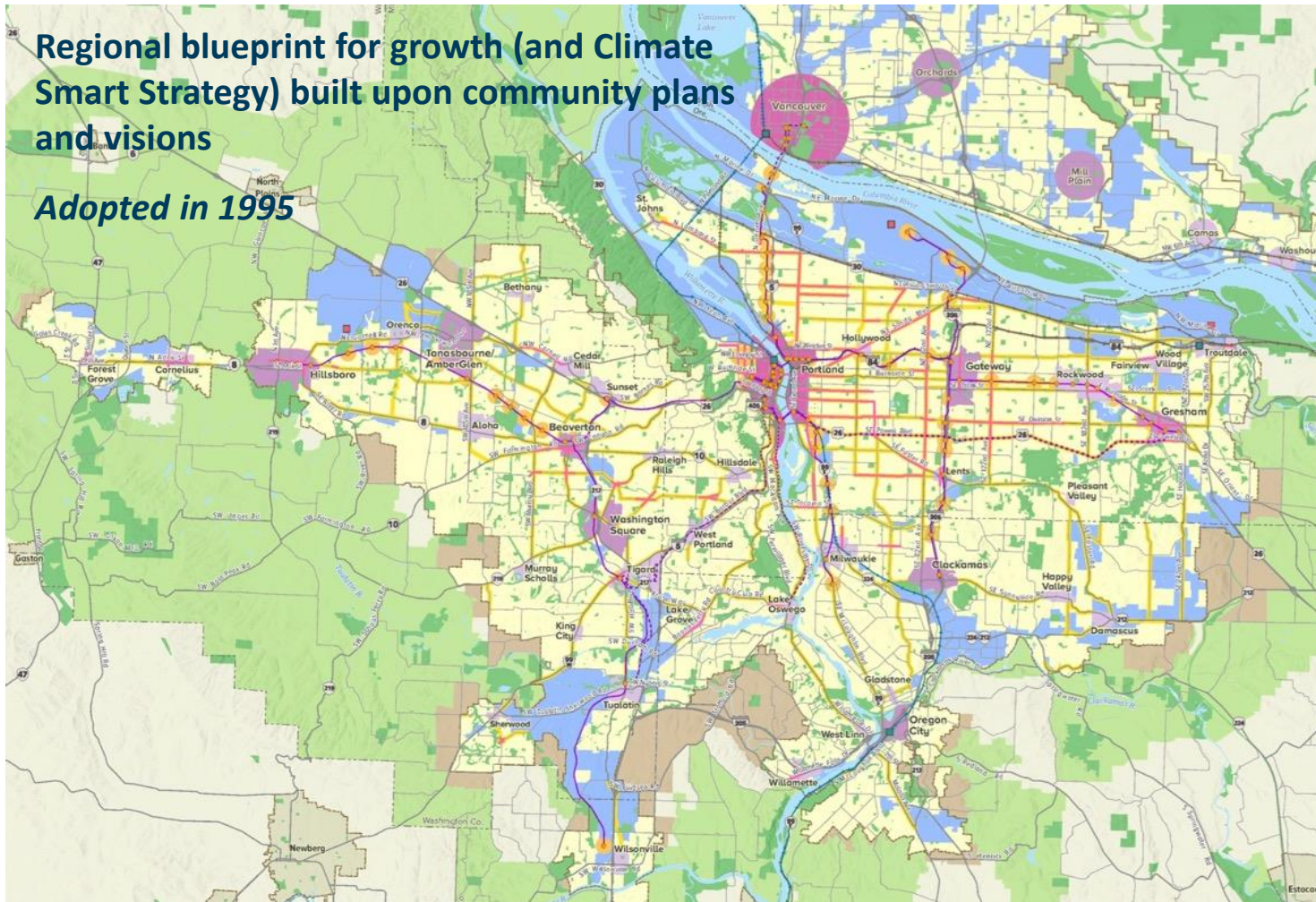
Source: U.S. Census



# 2040 Growth Concept is our foundation

Regional blueprint for growth (and Climate Smart Strategy) built upon community plans and visions

*Adopted in 1995*




# Regional Transportation Plan

## Regional Transportation Plan vision:

*"In 2040, everyone in the Portland metropolitan region will share in a prosperous, equitable economy and exceptional quality of life sustained by a safe, reliable, healthy and affordable transportation system with travel options."*



# Outcome-based Regional Transportation Plan

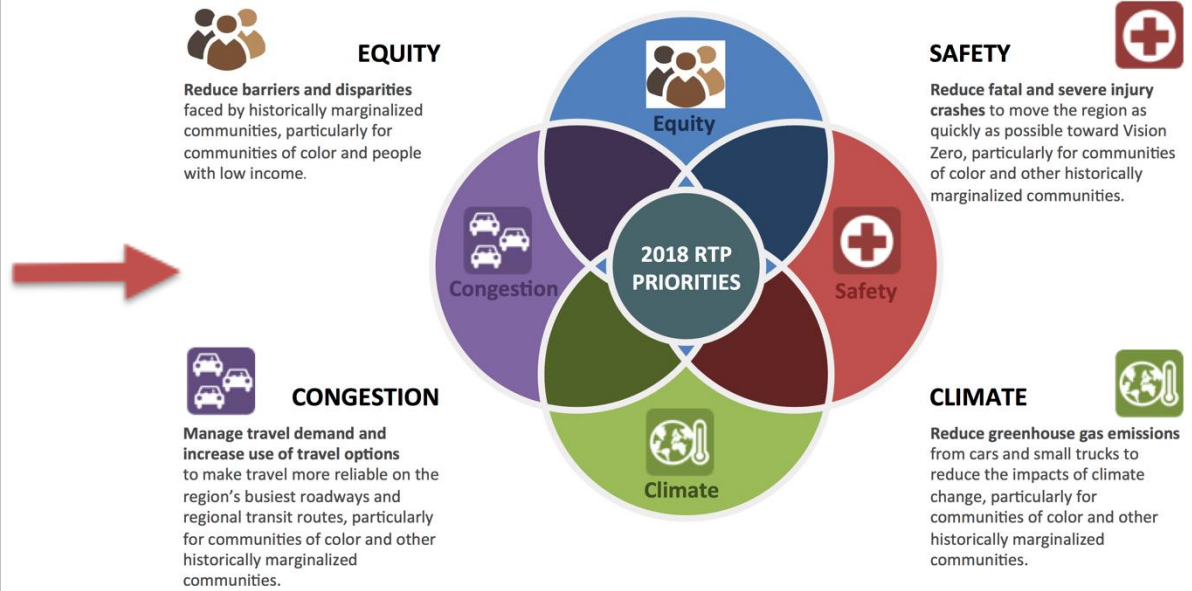


**2018 Regional Transportation Plan**

*A blueprint for the future of transportation in the greater Portland region*

Adopted December 6, 2018 [oregonmetro.gov/rtp](http://oregonmetro.gov/rtp)

## 2018 RTP Priority Policy Outcomes



Summarized from the 2018 Regional Transportation Plan (Chapters 3 and 6)

# Vision for a complete and connected system

2040-based outcomes provide broader policy lens

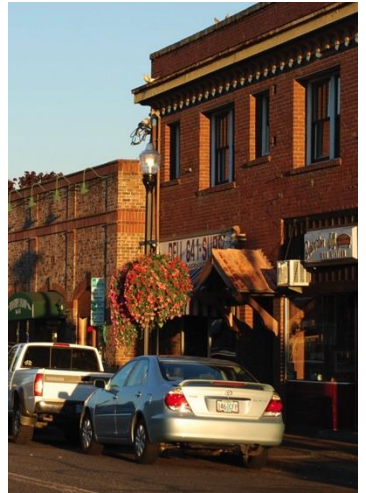
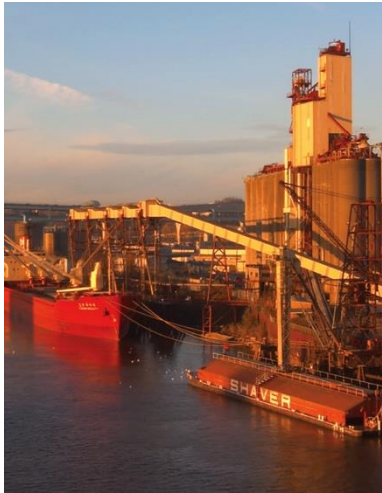
Defines a finish line

Emphasizes multimodal solutions and making the most of past investments

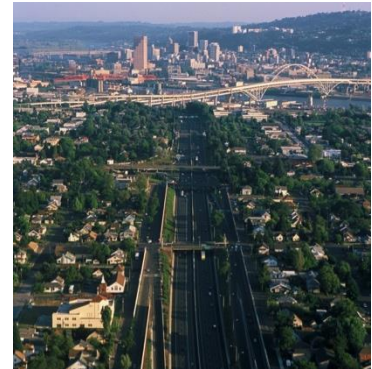
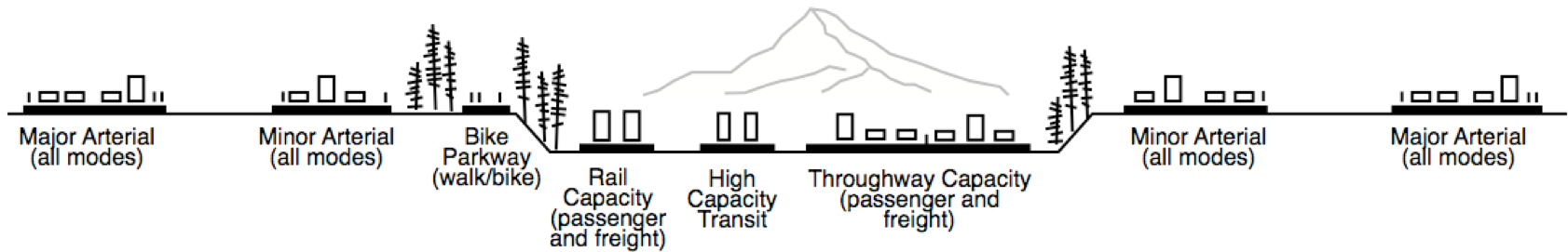
Defines aspirational policy targets to guide investments to achieve vision and monitor progress



# Connecting people to the places they need to go



# Expanding mobility options in the region's major travel corridors

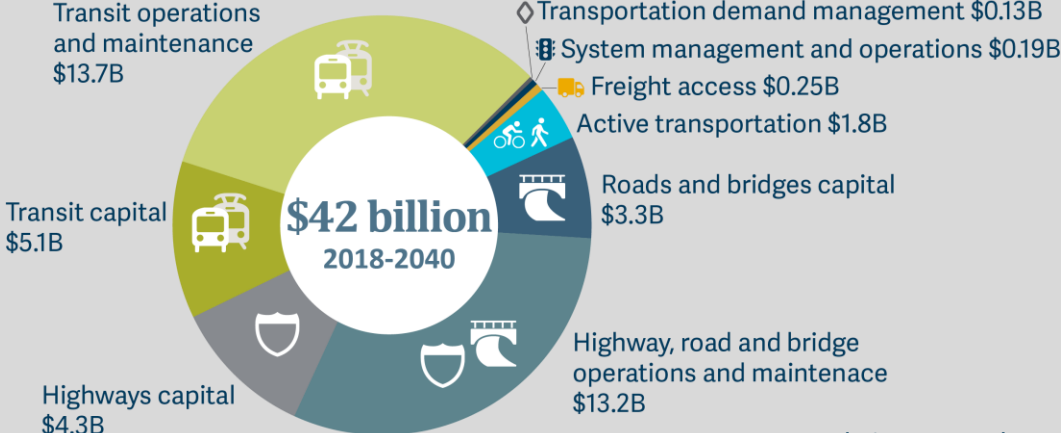


# 2018 RTP project priorities

**Cost by investment category**  
in rounded billions, 2016 dollars

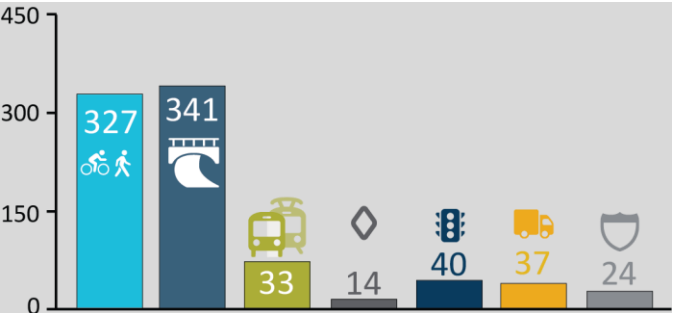
**Total capital**  
\$15.2 billion

**Total maintenance and operations**  
\$36 billion

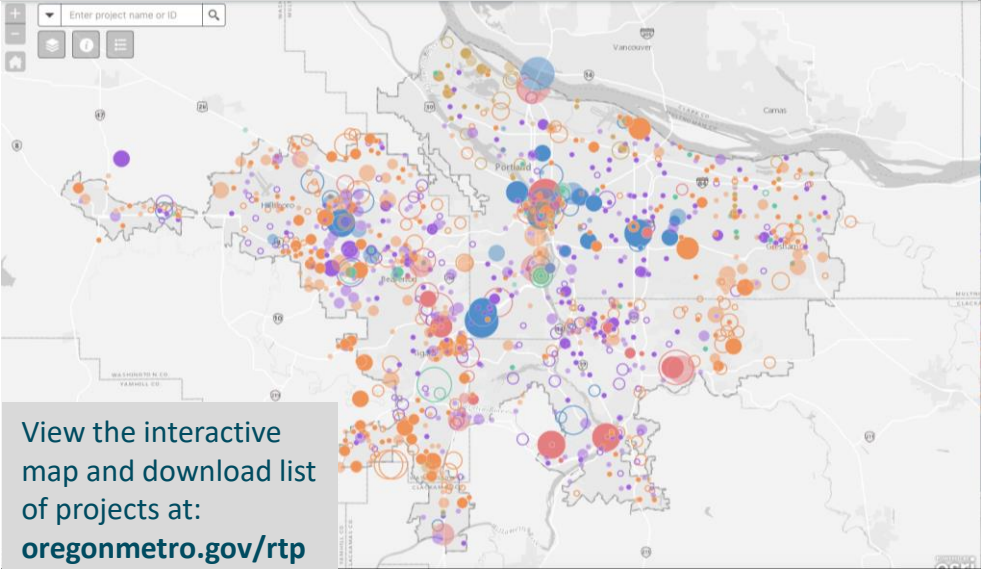


Source: 2018 RTP (Chapter 5)

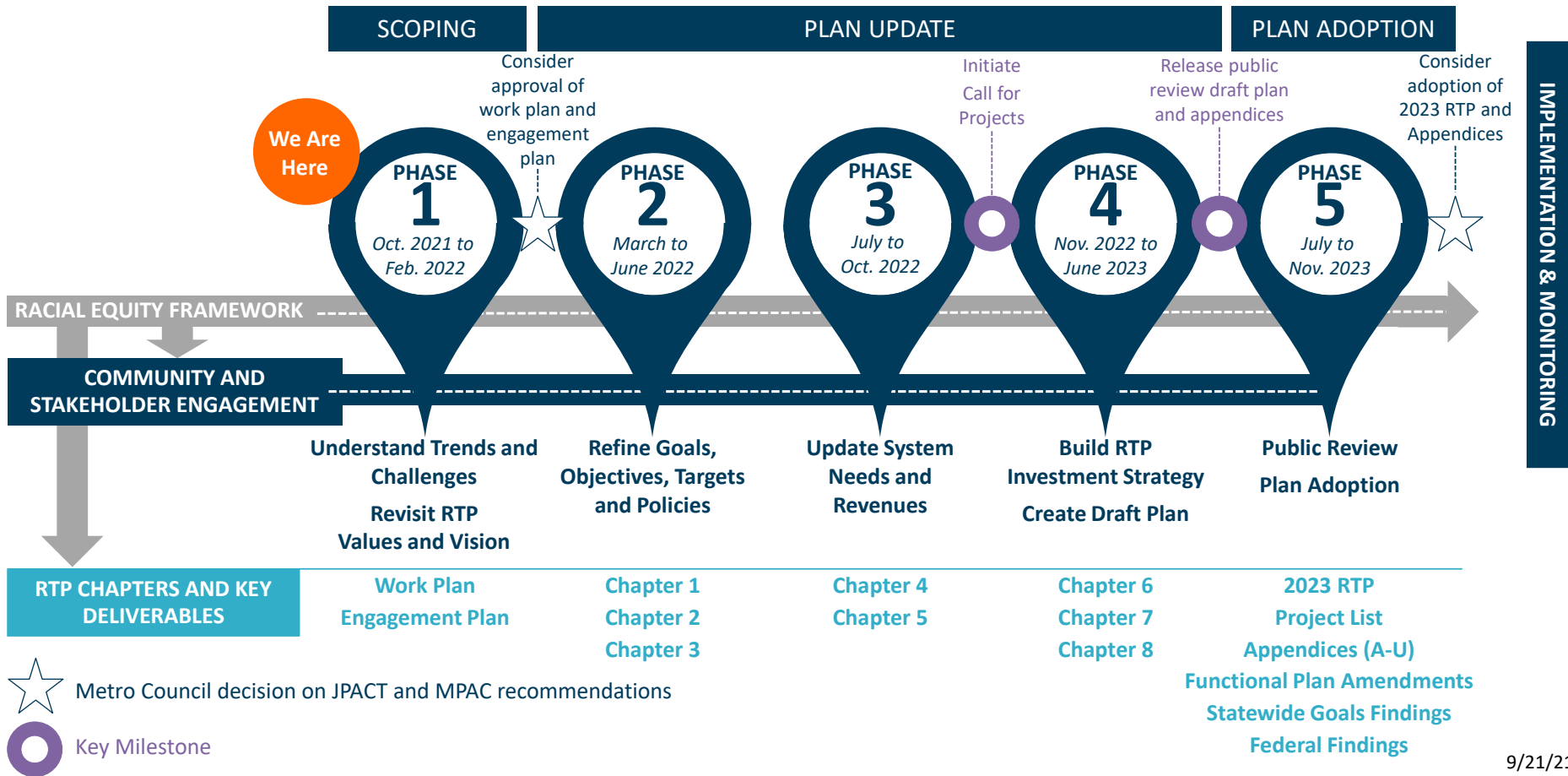
## Capital projects by investment category



Source: 2018 RTP Constrained Project List



# Proposed process for 2023 RTP Update





# Proposed engagement approach



- Leads with racial equity
- Inclusive
- Transparent
- Accessible
- Outcomes-focused
- Centered on people's lives and experiences

# What We've Heard From Council

- **Focus on people and values**
- **Advance Metro's commitment to racial justice, climate leadership and resilient communities**
- **Improve understanding of regional transportation needs and disparities and transportation funding**
- **Use storytelling and inclusive engagement strategies combined with quantitative data**
- **Update process for updating and prioritizing the project list**

Lead with racial equity.

Prioritize equity, climate, safety and mobility outcomes while advancing other goals and outcomes.

Better address safety and equity issues on region's urban arterials.

Accelerate implementation of the Climate Smart Strategy.

Bring to life the experiences and needs of people living and working in the region.

Identify underserved communities and barriers to meeting daily needs.

Better manage and operate the existing transportation system.

# What We Heard From JPACT members

- Provide space for more **robust funding discussions**
- **Think differently about how to fund transportation to support climate and equity outcomes**
- Define a **path for funding transit, bike and pedestrian connections**
- Recognize **different areas in the region have different needs and priorities**
- **Connect analysis to policy outcomes and investment priorities**
- **Investment priorities must be informed by community members**

This is last RTP to meaningfully address climate issue.

Would like to see the region make walking, biking and transit our top priority in this RTP.

RTP analysis should highlight the benefits and tradeoffs of policies and investments in different communities.

Funding sources and investment priorities need to be connected with our values.

It is important for this process to include lots of community engagement and engagement with elected leaders to create a shared vision for equity and climate – we are all in really different places on what this means for each community.

# Next steps for shaping the work plan and engagement strategy

- **October 2021 to January 2022** Metro Council, regional advisory committees and stakeholders discuss values, priorities and desired outcomes for update to inform work plan and engagement strategy
  - Community Leader’s Forum, stakeholder interviews, county coordinating committee briefings, focus groups, on-line survey, consultation with Tribes and federal and state agencies
- **February to March 2022** Metro Council and regional advisory committees discuss draft work plan and engagement strategy
- **March 2022** JPACT and Metro Council consider approval of work plan and engagement strategy (by Resolution)

# Discussion and feedback

1. Do you have feedback on the proposed process?
2. What policy outcomes are most important for this update to address?
3. Do you have suggestions on outreach and engagement for update?
4. Other feedback?

# Learn more about the **Regional Transportation Plan** at:



**Metro**

**Kim Ellis, AICP**

RTP Project Manager

[kim.ellis@oregonmetro.gov](mailto:kim.ellis@oregonmetro.gov)

[oregonmetro.gov/rtp](https://oregonmetro.gov/rtp)



# Understand trends, values, priorities and vision for future

October 2021 to Feb. 2022

**What:** Illustrate trends and challenges; seek input on values, priorities and vision for the future

**Who:** Community members, community leaders, business leaders, jurisdictional partners, Tribes, resource agencies

**How:** Existing committees, stakeholder interviews, focus groups, on-line survey, Metro Council discussions, special JPACT workshop, Community Leaders Forum, climate best practices panel, Consultation meetings



**Decision:** Council and JPACT consider approval of the work plan and engagement plan (by Resolution)



# Update Goals, Objectives, Targets and Policies

March to June 2022

**What:** Use values and priorities to refine goals, objectives and targets; update selected policies related to congestion pricing, mobility, urban arterials, resilience, green infrastructure and other topic areas identified in Phase 1; develop criteria for project list updates

**Who:** TPAC, MTAC, JPACT, MPAC and the Metro Council

**How:** Metro technical and policy advisory committees, Metro Council discussions, other TBD engagement activities

 **Milestone:** Draft updated Chapter 2 and Chapter 3 to guide plan update





# Update Needs and Revenues

July to October 2022

**What:** Document regional transportation needs and disparities; update forecast of revenues anticipated to pay for needed investments; set funding level for the RTP investment strategy

**Who:** Community members and community leaders (needs) and jurisdictional partners (revenues)

**How:** TPAC, JPACT and Metro Council discussions and other TBD engagement activities

 **Milestone:** Metro Council and JPACT initiate Call for Projects



# Build RTP Investment Strategy

November 2022 to June 2023

**What:** Update RTP project list, seek public feedback on draft list, evaluate performance and consider potential project list revisions

**Who:** Community members, community leaders, business leaders and jurisdictional partners

**How:** Metro technical and policy advisory committees, county coordinating committees', Metro Council discussions, and other TBD engagement activities

 **Milestone:** Metro staff release draft 2023 RTP, appendices and financially constrained project list for public review



# Public Review and Adoption

July to November 2023

**What:** Seek feedback on updated draft plan, appendices and projects

**Who:** Community members, community leaders, business leaders, jurisdictional partners, Tribes, resource agencies

**How:** Metro technical and policy advisory committees, county coordinating committees', Metro Council discussions, Community Leaders Forum, online open house, Consultation meetings, public comment period and hearings



**Decision:** Council and JPACT consider approval of the 2023 RTP and appendices (by Ordinance)

# 2018 RTP Goals

## WHAT WE WANT TO ACHIEVE

Vibrant communities

Shared prosperity

Transportation choices

Reliability and efficiency

Safety and security

Healthy environment

Healthy people

Climate leadership

## HOW WE GET THERE

Equitable transportation

Fiscal stewardship

Transparency and accountability

# 2018 RTP evaluation framework

Investments evaluated for alignment with RTP priority policy outcomes and goals:

- *System-level evaluation (all projects)*
- *Transportation equity analysis (all projects)*
- *Project-level evaluation (piloted and deferred to next plan update)*



Source: 2018 RTP (Chapter 7)

# 2018 RTP Policy Targets

1



**AFFORDABILITY** Reduce the combined housing and transportation expenditure for lower-income households by 25%, compared to 2015



2



**SAFETY** Eliminate transportation fatalities and serious injuries for all users by 2035, with a 50% reduction by 2025 and a 16% reduction by 2020, compared to 2015



3



**MULTIMODAL TRAVEL** Reduce vehicle miles traveled per person by 10%, compared to 2015



# 2018 RTP Policy Targets

4



**MODE SHARE** Triple walking, biking and transit mode shares, compared to 2015



5



**SYSTEM COMPLETION** Complete 100% of the regional network of sidewalks, bikeways and trails



6



**CONGESTION** Meet the Interim Regional Mobility Policy for throughways, arterials and the regional freight network



# 2018 RTP Policy Targets

7



**FREIGHT DELAY** Reduce vehicle hours of delay per truck trip by 10%, compared to 2040 No Build



8



**CLIMATE CHANGE** Reduce per capita greenhouse gas emissions from cars and small trucks by 20% by 2035 and 25% by 2040, compared to 2005



9



**CLEAN AIR** Maintain or reduce air pollution from mobile sources, compared to 2015



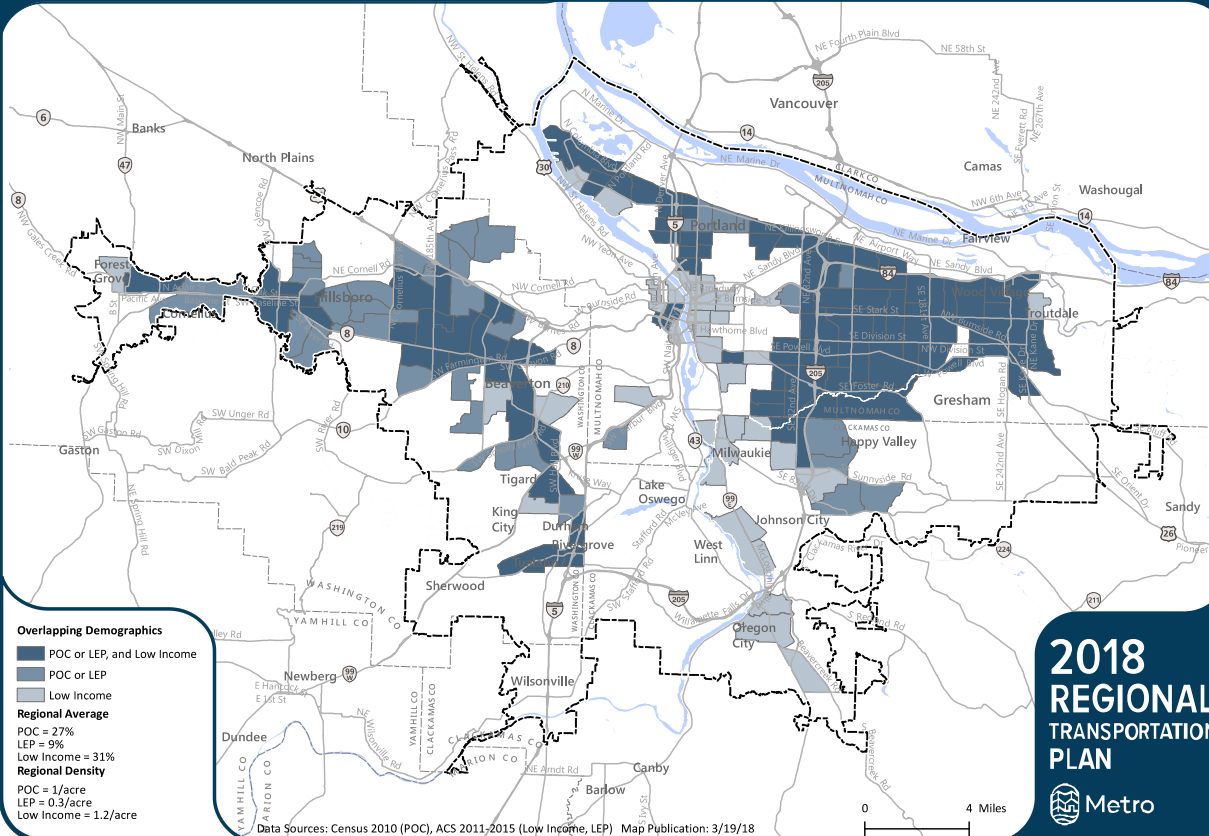


# 2018 RTP Equity Analysis

*Analysis of priorities and disparities experienced by communities that have been excluded from decision making processes and where transportation policies and investments have disproportionately led to harm, displacement and disinvestment*

## Communities of Color, English Language Learners, and Lower-Income Communities

This map shows census tracts with higher than regional average concentrations and double the density of one or more of the following: people of color, people with low income, and English language learners. Census tracts where multiple demographic groups overlap are identified.



Priorities identified through public engagement and technical work group

- Safety
- Access to jobs, essential destinations and travel options
- Public health
- Affordability

DLCD Climate Friendly Equitable communities (CFEC) rulemaking may result in new or updated requirements for the 2023 RTP to address.

# 2018 RTP Safety Analysis

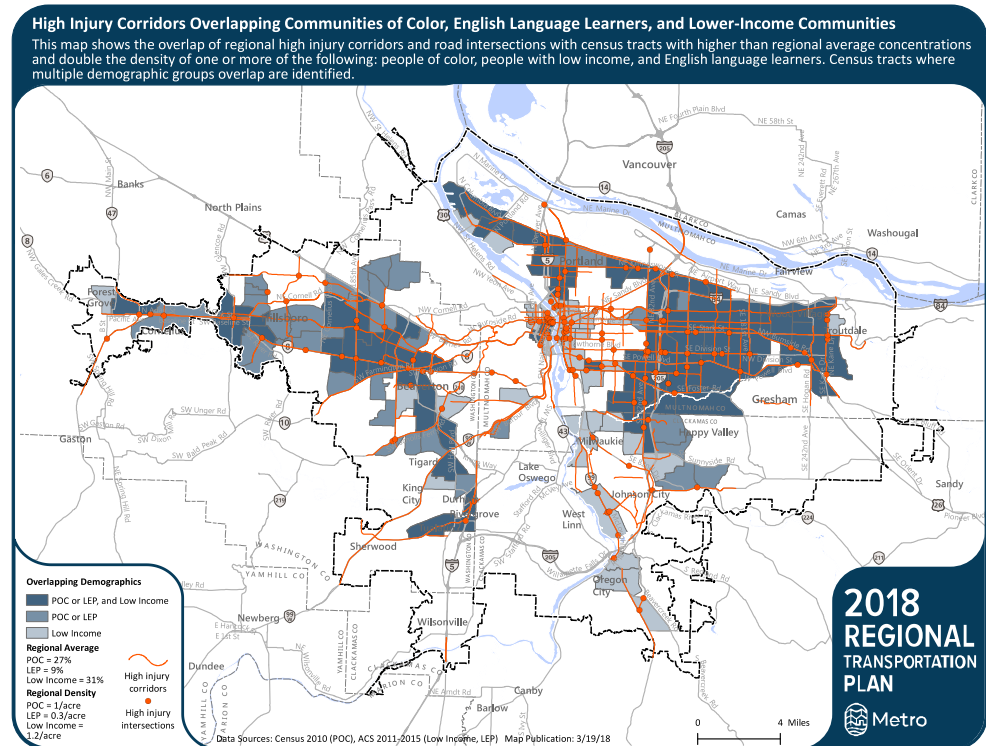
## *Analysis of high injury corridors and hotspots*

More than **60 percent of projects improve safety** and **three-quarters of those projects are located in equity focus areas** – areas with the highest incidents of crashes causing death or life-changing injuries

Average 482 deaths  
and serious injuries per year

60% of serious crashes occur on  
high injury network which  
represents 6% of all streets

While the number of projects improving safety is moving in the right direction, observed crash data from last five years indicates that the region is moving in the wrong direction to achieve Vision Zero target.



Source: 2018 RTP (Chapter 3)

# 2018 RTP Climate Analysis

## *Analysis of Climate Smart Strategy implementation*

### Climate Smart Strategy integrated in 2018 RTP

We are **making satisfactory progress** if we implement the RTP, but more work (and funding) is needed

**Track and report progress** every 5 years through plan updates to inform planning and programming activities

DLCD Climate Friendly Equitable communities (CFEC) rulemaking may result in new or updated requirements for the 2023 RTP to address.



#### APPENDIX J

2018 Regional Transportation Plan

### Climate Smart Strategy implementation and monitoring

December 6, 2018

[oregonmetro.gov/r](http://oregonmetro.gov/r)

# 2018 RTP Mobility Analysis

## *Analysis of congestion on the region's major travel routes*

Congestion forecasted to grow on throughways and arterials

New multimodal mobility policy and congestion management tools needed for the region

Metro/ODOT regional mobility policy update will recommend an updated policy, measure(s) and target(s) for the 2023 RTP.

DLCD Climate Friendly Equitable communities (CFEC) rulemaking may result in new or updated requirements for the 2023 RTP to address.

### Congestion Management Process Toolbox

1		<b>Community design strategies</b> <ul style="list-style-type: none"> <li>Walkable communities and job centers facilitated by compact land use in combination with walking, biking and transit connections</li> <li>Mixed-used areas and transit-oriented development</li> <li>Parking management and pricing</li> </ul>
2		<b>Travel Information and Incentives strategies</b> <ul style="list-style-type: none"> <li>Commuter travel options programs</li> <li>Household individualized marketing programs</li> <li>Car-sharing and eco-driving techniques</li> <li>Safe Routes to School programs</li> <li>Ridesharing (carpool, vanpool) services</li> </ul>
3		<b>System management and operations strategies</b> <ul style="list-style-type: none"> <li>Real-time variable message signs and speed limits</li> <li>Signal timing and ramp metering</li> <li>Transit signal priority, bus-only lanes, bus pull-outs</li> <li>Incident response detection and clearance</li> <li>Access management (e.g., turn restrictions, medians)</li> </ul>
Emerging		<b>Congestion pricing strategies</b> <ul style="list-style-type: none"> <li>Peak period pricing</li> <li>Managed lanes</li> <li>High occupancy toll (HOT) lanes</li> </ul>
4		<b>Active Transportation strategies</b> <ul style="list-style-type: none"> <li>New biking and walking connections to schools, jobs, downtowns and other community places</li> <li>Bicycle infrastructure (e.g., bicycle racks, lockers and other bicycle amenities at transit stations and other destinations)</li> <li>Separated pathways and trails</li> </ul>
5		<b>Transit strategies</b> <ul style="list-style-type: none"> <li>High capacity transit</li> <li>Expanded transit coverage</li> <li>Expanded frequency of service</li> <li>Improvements in right-of-way to increase speed and reliability of buses and MAX</li> <li>Community and job connector shuttles</li> <li>Park-and-ride lots in combination with transit service</li> </ul>
6		<b>Street and throughway capacity strategies</b> <ul style="list-style-type: none"> <li>Local and arterial street connectivity to spread out travel</li> <li>Addition of turn lanes at intersections, driveway restrictions and other geometric designs such as roundabouts</li> <li>Road widening to add new lane miles of capacity (e.g. adding auxiliary lanes, additional general purpose lanes); pricing is considered when adding new throughway capacity in the region</li> </ul>