



Safer Sandy

*Building a Road
for All*

Arini Farrell, Multnomah County
Sarah Selden, City of Fairview

Project Background- Sandy Blvd

- Significant regional corridor in East Multnomah County which connects Portland, Gresham, Fairview, and Wood Village.
- Designated freight corridor
- Sandy Blvd lacks adequate multimodal infrastructure to support safe non-auto dependant transportation

Community Profile- Sandy Blvd

- Per census data- this block group, evaluated by ODOT in 2021 for equity criteria like non-white population, poverty, disability, and limited English proficiency, ranked highest on the Transportation Disadvantaged Populations Index (TDPI), indicating a high number of underserved residents
 - 71% of the population is non-white
 - 25% have poverty status
 - 13% are living with a disability
 - 28% are under 17 and 8% over 64

Community Profile- Sandy Blvd

Residents living along Sandy Blvd. rely on this corridor for all modes of transportation, particularly for residents in the noted Census block between Sandy and I-84, where there is limited north-south connectivity. The residential development within the NE Sandy Blvd. project area from NE 201st to Quail Hollow consists of:

- **8 mobile home parks:** 584 units including a 137-unit senior community
- **2 RV parks:** 430+ long-term rental spaces
- **4 apartment complexes:** 310 units
- **A manufactured home subdivision:** 52 homes

Sandy Blvd 230th-238th Improvements

- Recent project Sandy 230th- where it terminates. Completed in 2019



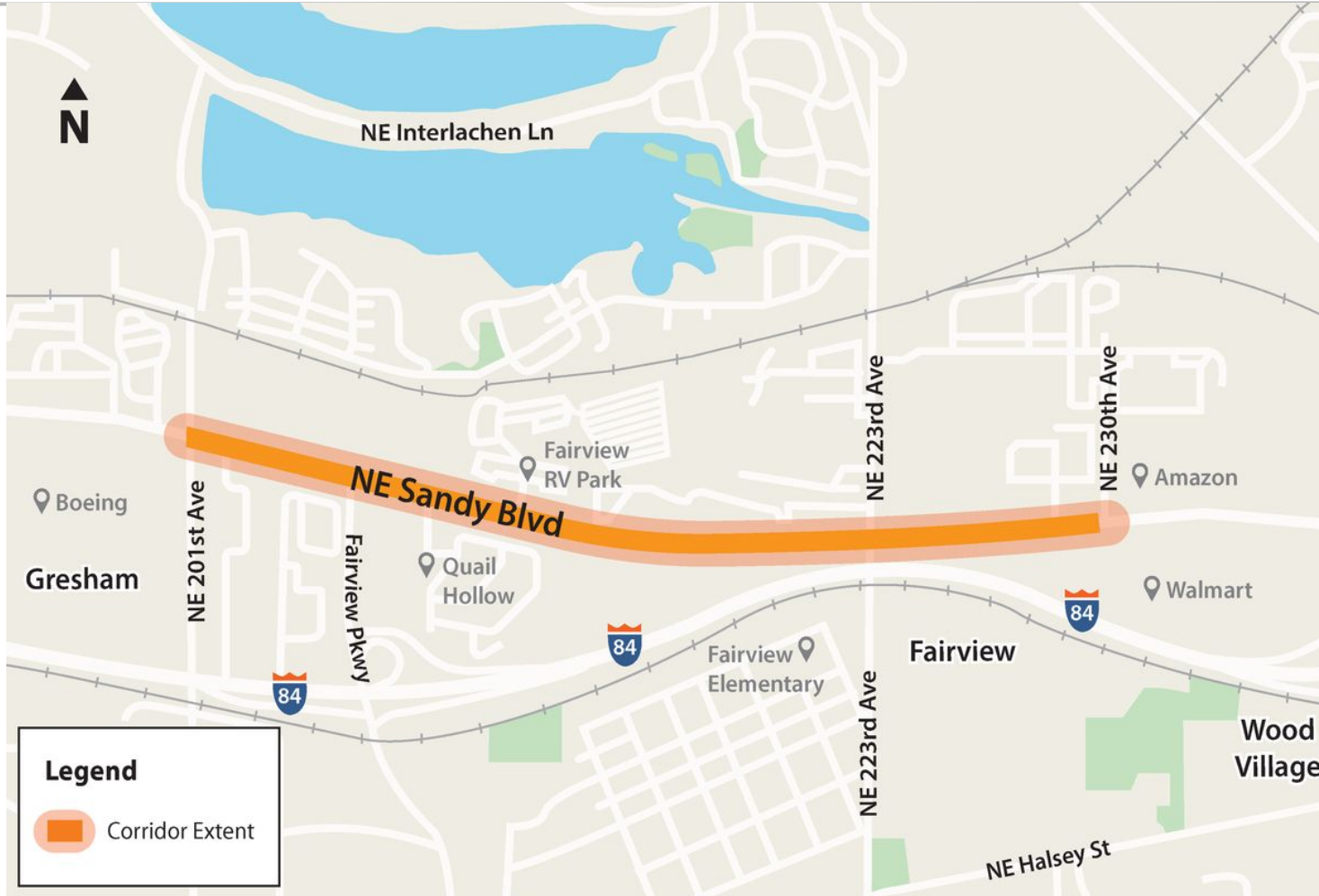
Safer Sandy Project

The goal of the project is to identify improvements for everyone who walks, rolls, bikes, takes transit, or drives on Sandy so they can share the road safely.

This will be an opportunity to consider options such as adding crosswalks, improving street lighting, reducing truck conflict points, new sidewalks and bike lanes as well as other drainage improvements



Safer Sandy- Project Limits



Sandy Blvd

Project Location



Sandy Blvd and
Quail Hollow

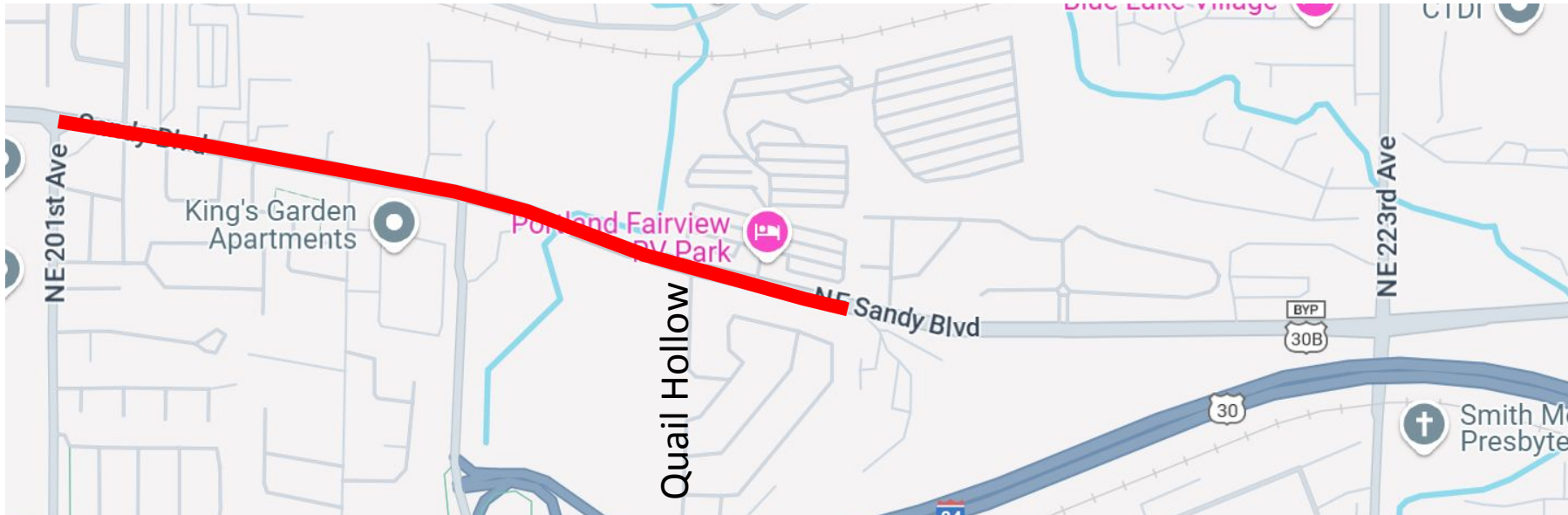


Project Funding

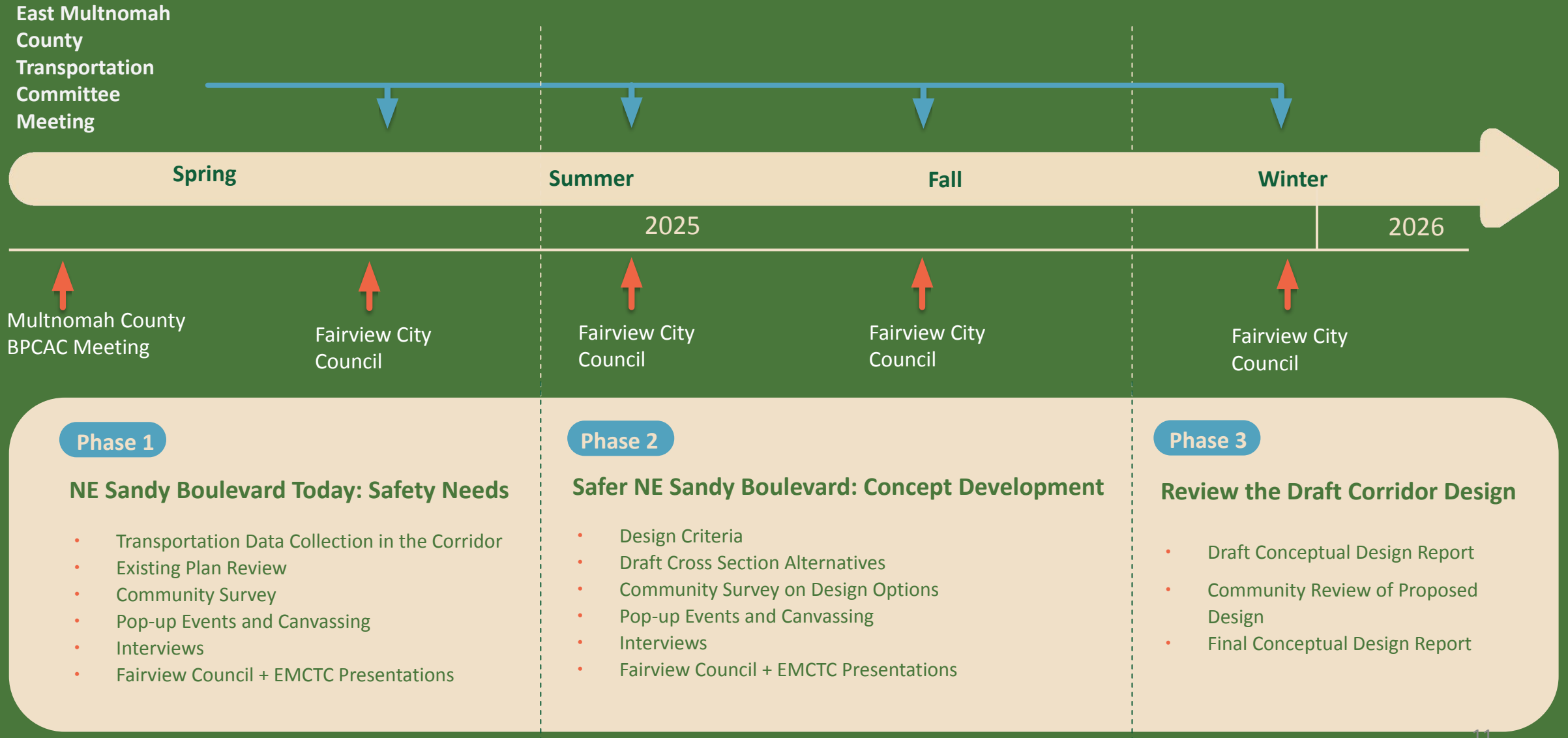
- Multnomah County was awarded funding from the Regional Flexible Funds allocation (RFFA) to complete a planning project for this segment
- Deliverables:
 - Corridor Plan with Conceptual Designs based on community feedback and input
 - Assess existing Conditions and Considerations
 - Engagement with Community and Stakeholders
 - Provide alternative Design Concepts
 - 15% design effort

Safer Sandy- Funding

- A segment of Sandy- Gresham to Quail Hollow has been awarded funding for construction and the Safer Sandy project will inform the improvements for that segment



Safer Sandy Corridor Planning Project Timeline



Walk Audit Update

- Project team conducted a walk audit on January 28th



Segment 1 - 201st - Fairview Pkwy



ROAD SAFETY AUDIT REPORT

SAFER SANDY COMPLETE STREETS
CONCEPT PLAN

alta

- Fatal Pedestrian Crash
- Other Pedestrian Crash
- Other Bike Crash
- Vehicle Only Crashes 2012-2022

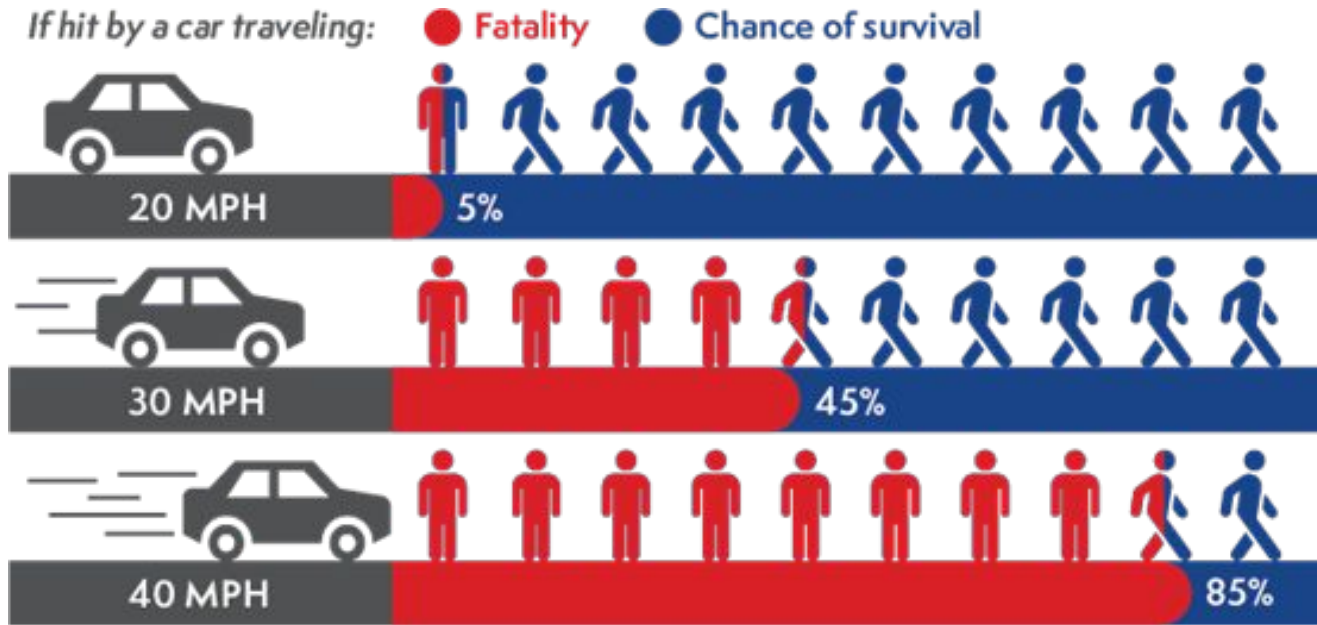
- Bus Stop
- City Limits
- Stream
- Bike Lane
- Path

Segment 1: 201st Ave to Fairview
Pkwy

2015 ADT: 10,423
2023 ADT: 12,423



Segment 1 - 201st - Fairview Pkwy



- In January 2020, a person driving a motor vehicle killed a person walking across the street between the two bus stops
- Intermittent sidewalks/bike lanes (west of 205th Ave)
- With documented crash history, limited facilities, and a posted speed limit of 40MPH, this segment presents a deadly safety risk for pedestrians and bicyclists

Segment 2- Fairview Pkwy to Blossom Hill Rd



ROAD SAFETY AUDIT REPORT

SAFER SANDY COMPLETE STREETS
CONCEPT PLAN

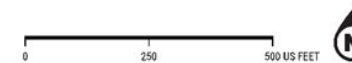
alta

- Other Pedestrian Crash
- Vehicle Only Crashes 2012-2022

- Bus Stop
- City Limits
- Stream
- Bike Lane

Segment 2: Fairview Pkwy to
Blossom Hill Rd

2015 ADT: 9,902
2023 ADT: 11,789



Segment 2- 201st - Fairview Pkwy to Blossom Hill Rd



- The intersection of Fairview Pkwy and Sandy Blvd: 18 of the 44 crashes on this segment occurred at this intersection.
- There are several bus stops that serve residential areas east of Fairview Pkwy, but there are no sidewalks or places to cross Sandy Blvd.

Segment 3- Blossom Hill Rd to 223rd



Segment 3- Blossom Hill Rd to 223rd



- New construction (live/work units likely to serve as new destinations for people walking and biking in the area) prevented pedestrian access on the north side of the roadway.
- There are no crossings between 223rd Ave and Fairview Pkwy (0.75 miles).

Segment 4- 223rd to 230th



ROAD SAFETY AUDIT REPORT

SAFER SANDY COMPLETE STREETS
CONCEPT PLAN

alta

- Other Pedestrian Crash
- Other Bike Crash
- Vehicle Only Crashes 2012-2022

- Bus Stop
- City Limits
- Stream
- Bike Lane

Segment 4: 223rd Ave to 230th Ave

2015 ADT: 6,943

2023 ADT: 9,170



Segment 4- 223rd to 230th



- There are no sidewalks or bike lanes on this segment.
- Pettijohn Park is inaccessible but could provide an opportunity for stormwater management or other spatial needs in the corridor.
- The slope of the terrain on the south side of the road further constrains the roadway and all modes.
- Straight roadway with few destinations on either side likely results in high vehicle speeds.

Public Engagement Campaign

Campaign Launch - May 7, 2025!

- Interactive online survey and input map (closes June 2)
- Social media posts
- Mailers and Postcards
- Lawn signs
- Fairview Newsletter

In- Person interviews with local community leaders, followed by community conversations and canvassing

Public Engagement Campaign

Community Conversations:

1. Quail Hollow mobile home park (55+)/ Portland Fairview RV Park Joint Event
2. Slavic Evangelical Church Sulamita Church and School (Russian and Ukrainian interpreter anticipated)
3. Walmart (Spanish interpreter anticipated) (Pop-up Event)
4. Smith Memorial Presbyterian Church
5. Townsend Farms (Spanish interpreter anticipated)
6. Natural Leaders

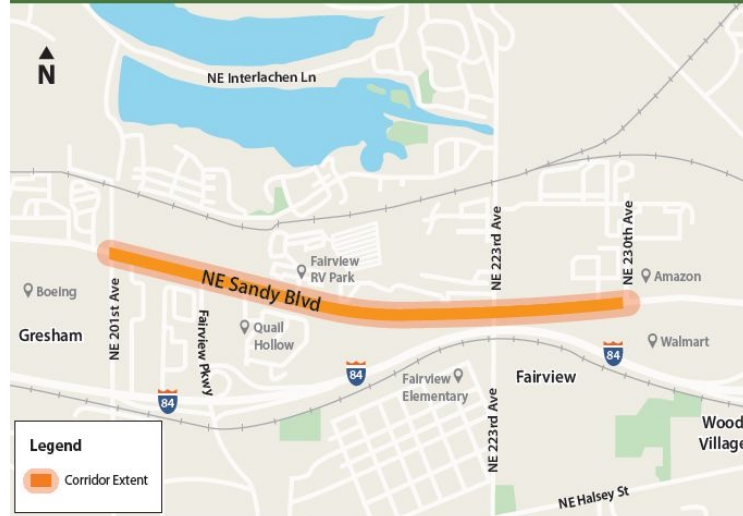
Interviews

- Quail Hollow mobile home park, onsite manager
- Fairview Terrace gated townhome community HOA members;
- Chris Ellison, Reynolds School District Transportation Director;
- Sulamita Church and School;
- Oregon Trucking Association;
- Local Community Organization- Natural Leaders

Public Engagement Campaign

Help Shape the Future of NE Sandy Blvd!

Your voice matters! What's it like to walk, bike, roll, bus, or drive on NE Sandy Blvd in Fairview?



Take the survey

The Safer Sandy project is making a plan to improve Sandy between 201st Ave and 230th Ave. This plan will make it safer for everyone to use this road.



Learn more:
multco.us/info/safer-sandy

311 Traducción e Interpretación | Biên Dịch và Thông Dịch | 口笔译服务 | Устный и письменный перевод | Turjumaad iyo Fasiraad | Письмовий і усний переклад | Traducere și interpretariat | Chiaku me Awewen Kapas | अनुवादन तथा व्याख्या “



Public Engagement Campaign



**¡Ayude a dar forma al futuro
de NE Sandy Blvd!**

¿Cómo es caminar, andar en bicicleta, rodar, tomar el
autobús o conducir por NE Sandy Blvd en Fairview?

Responda la encuesta:

El proyecto Safer Sandy
está desarrollando un plan
para mejorar la calle Sandy
entre la Avenida 201 y la
Avenida 230. Este plan hará
que sea más seguro para
todas las personas usar
esta calle.



Más información:
multco.us/info/safer-sandy

Узнайте о проекте и примите участие в опросе
Дізнайтеся про проект та пройдіть опитування

POSTAL
PLACEHOLDER

Questions

<https://multco.us/info/safer-sandy>