

Sandy River

Greenway Park & Trail

EMCTC

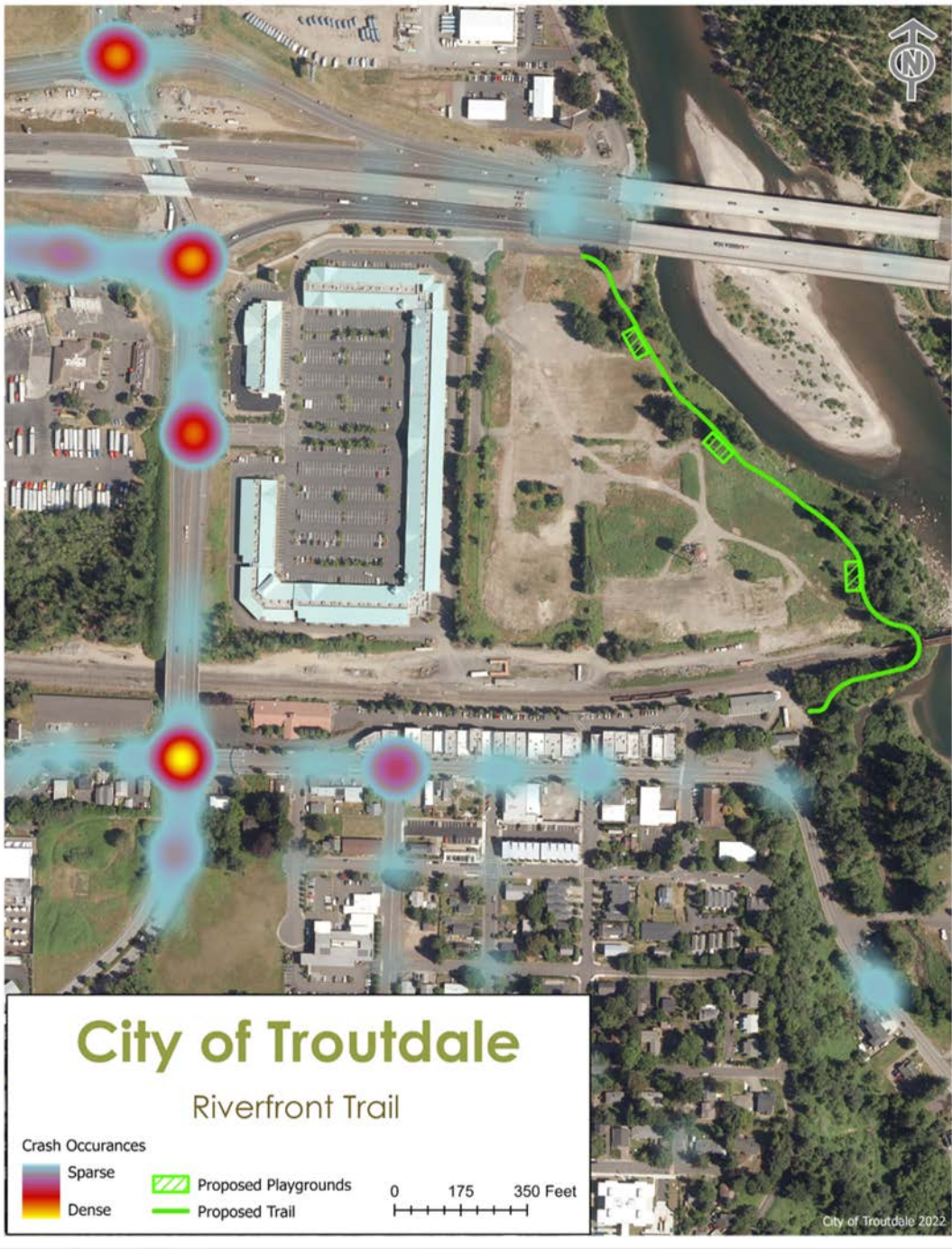
June 13, 2022



Sandy River Greenway - Park & Trail



- Metro's 2019 Parks and Nature Bond (about \$2M)
- Multi-use, paved trail
- ¼ mile, 12-ft. wide
- Three amenity areas
- 60% design complete
- North End: I-84 Bike Trail/Industrial Area
- South End: Visitor Center, Bike Hub, Downtown
- 40-Mile Loop
- Alternative route to 257th

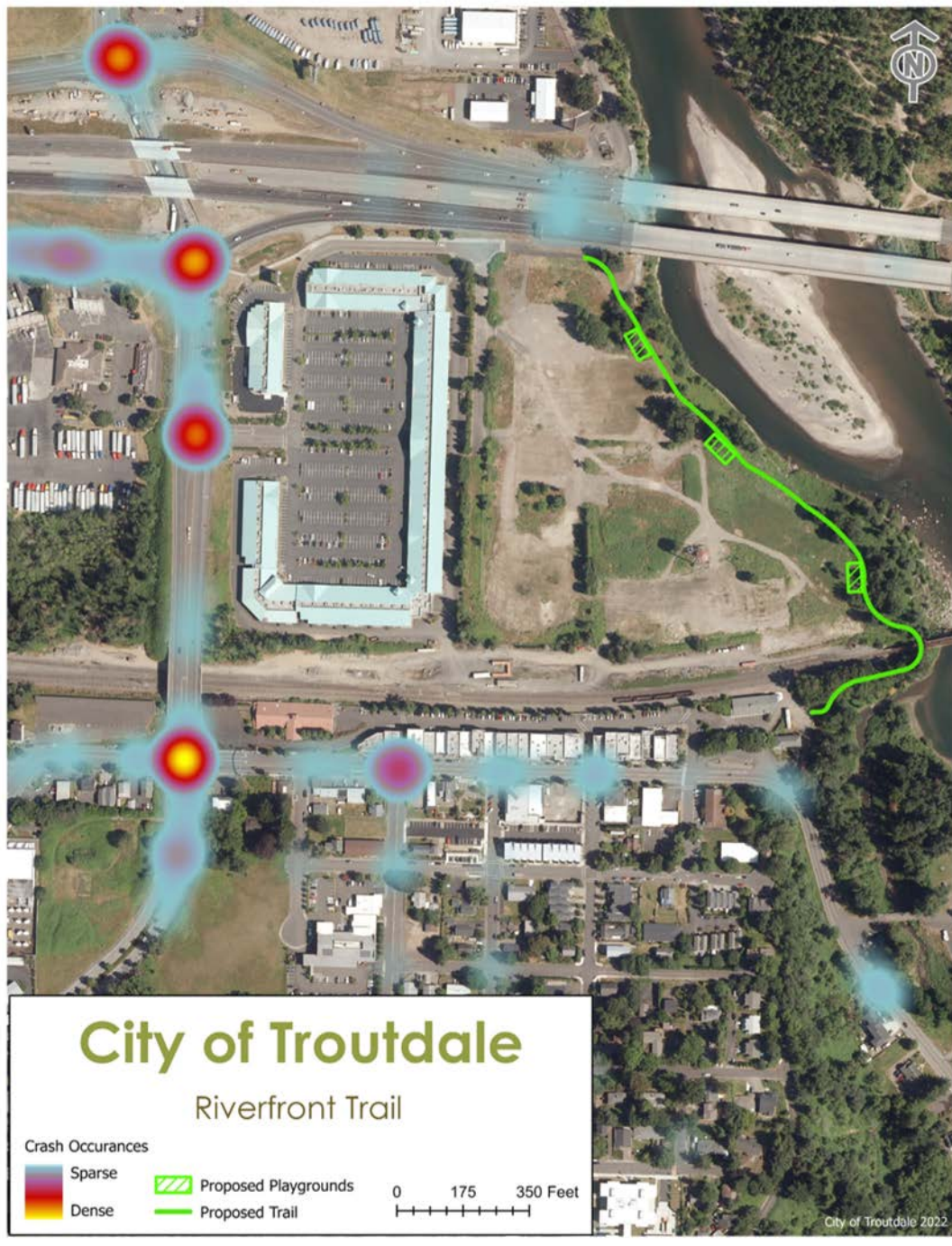


257th Ave

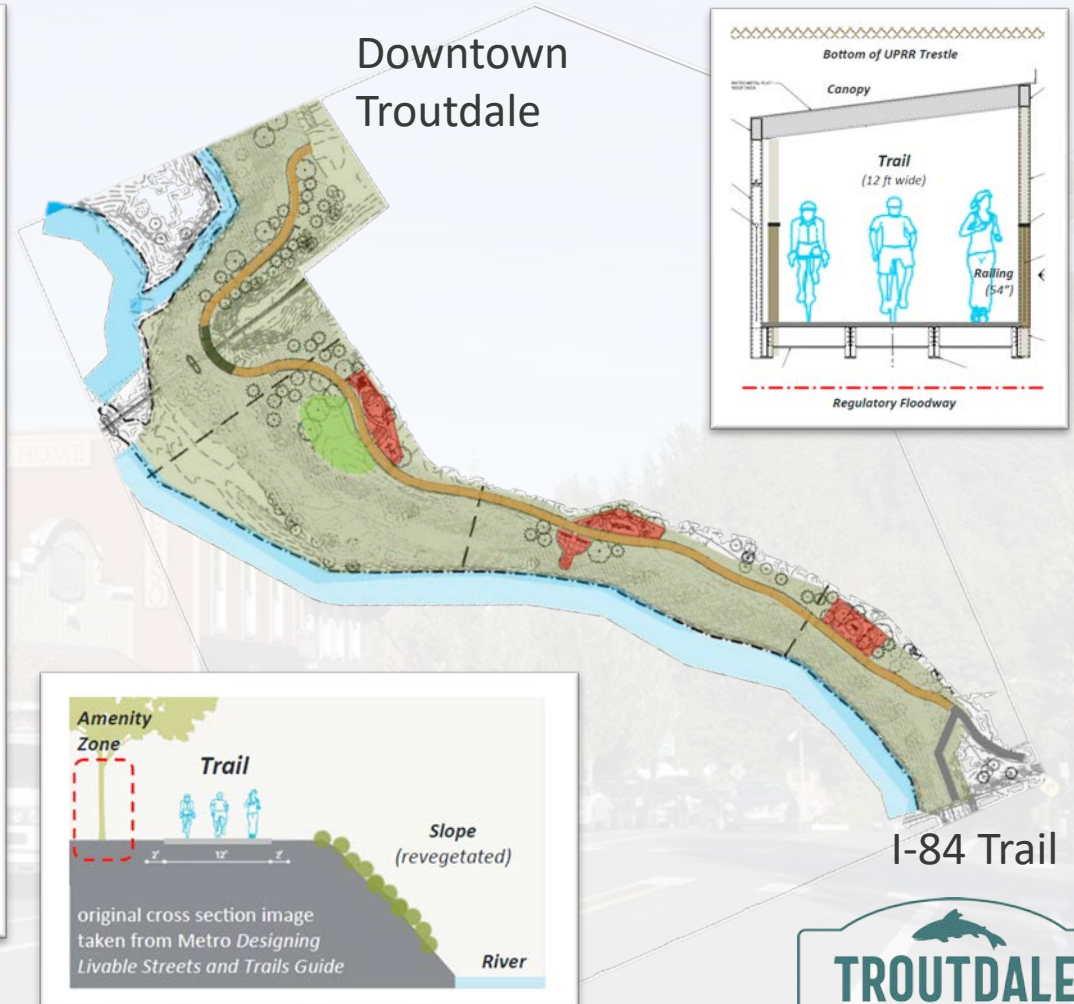


Safe Systems – vision Zero

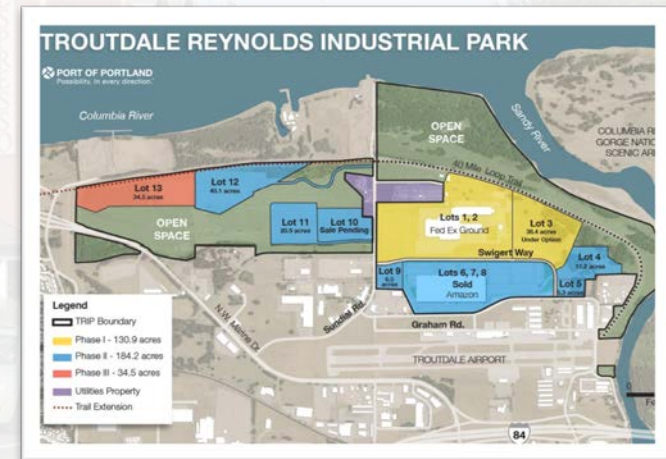
- One traffic death is too many.
- In road injury epidemiology, kinetic energy is the pathogen.
- People will make mistakes.
- Keep impacts on the human body at tolerable levels.



Sandy River Greenway - Park & Trail



North End: I-84 Trail/Wabun Trail



South end: Visitor Center/Bike hub/Troutdale



- **Currently working on:**

- 90% design & additional community feedback
- UPRR 60% review comments due: July 7
- Grant funding & prepare for construction

- **More info:** www.troutdaleoregon.gov/commdev/page/sandy-river-park-trail

- **Contact:** Melissa.Johnston@troutdaleoregon.gov

- **Thank you!**

Questions & Discussion