

# Sandy River

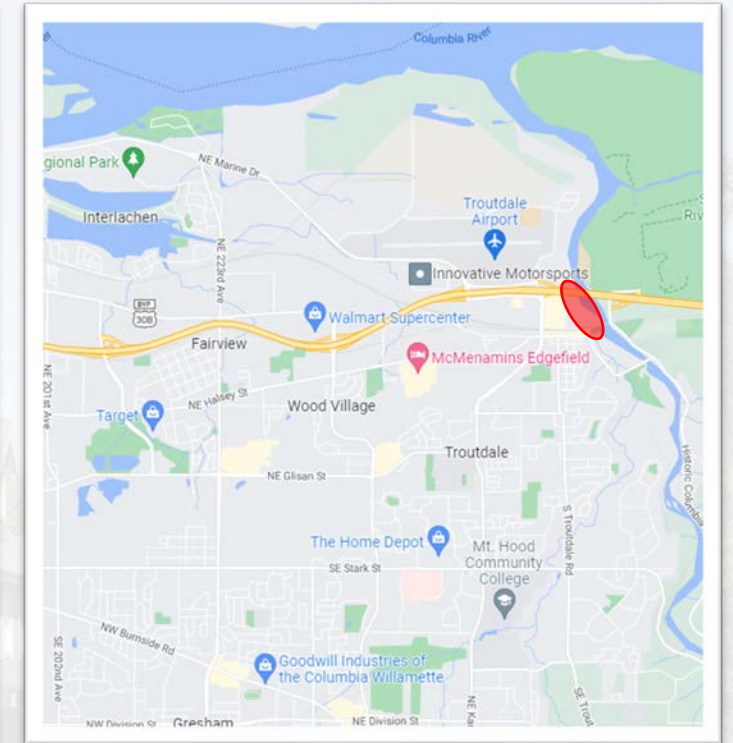
## Greenway Park & Trail

Bicycle and Pedestrian Citizen Advisory Committee

June 8, 2022



# Sandy River Greenway - Park & Trail





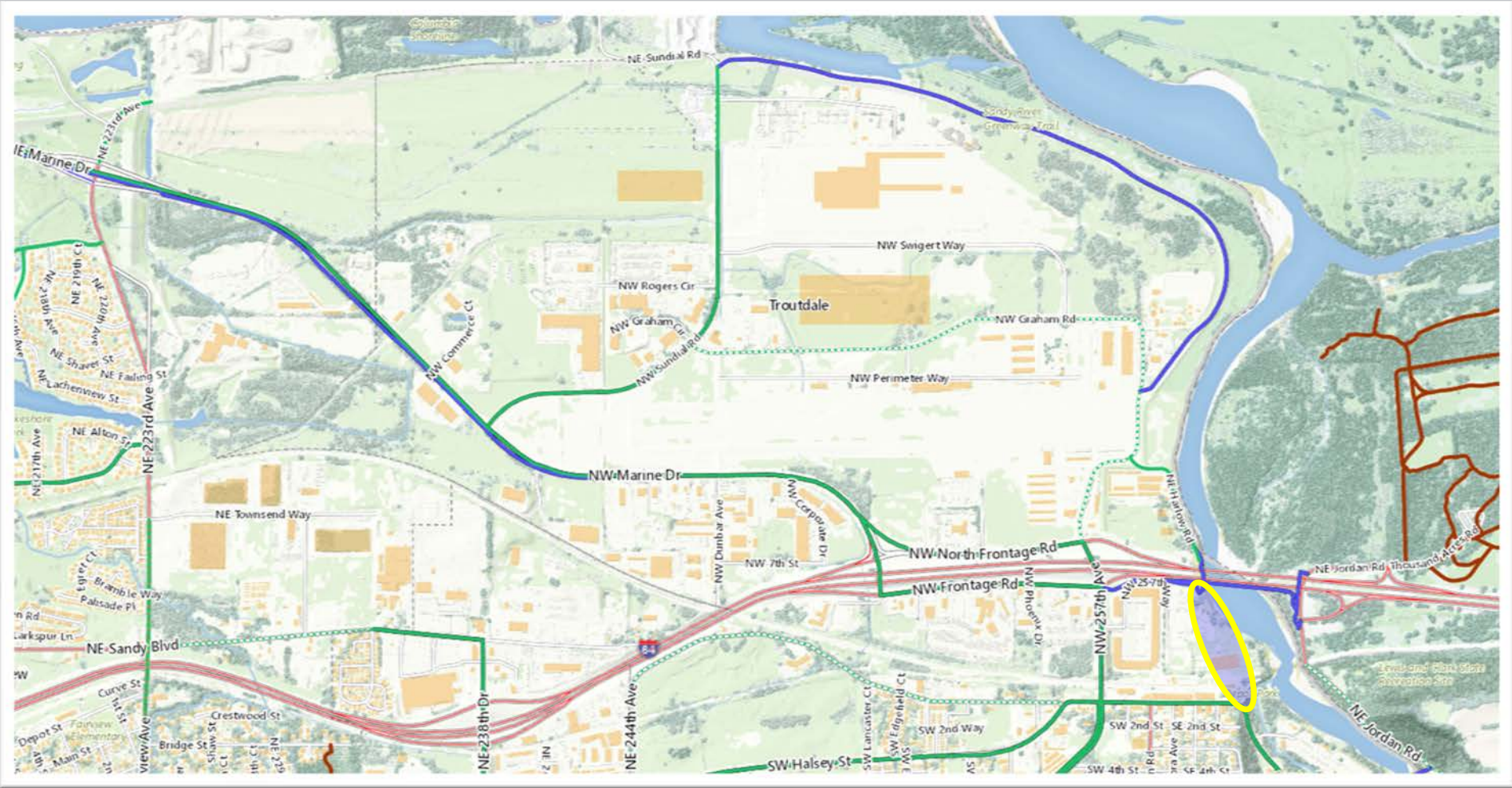
# Sandy River Greenway - Park & Trail



- Metro's 2019 Parks and Nature Bond
- Multi-use, paved trail
- ¼ mile, 12-ft. wide
- Three amenity areas
- 60% design complete
- North End: I-85 Bike Trail/Industrial Area
- South End: Visitor Center, Bike Hub, Downtown
- 40-Mile Loop
- Alternative route to 257<sup>th</sup>



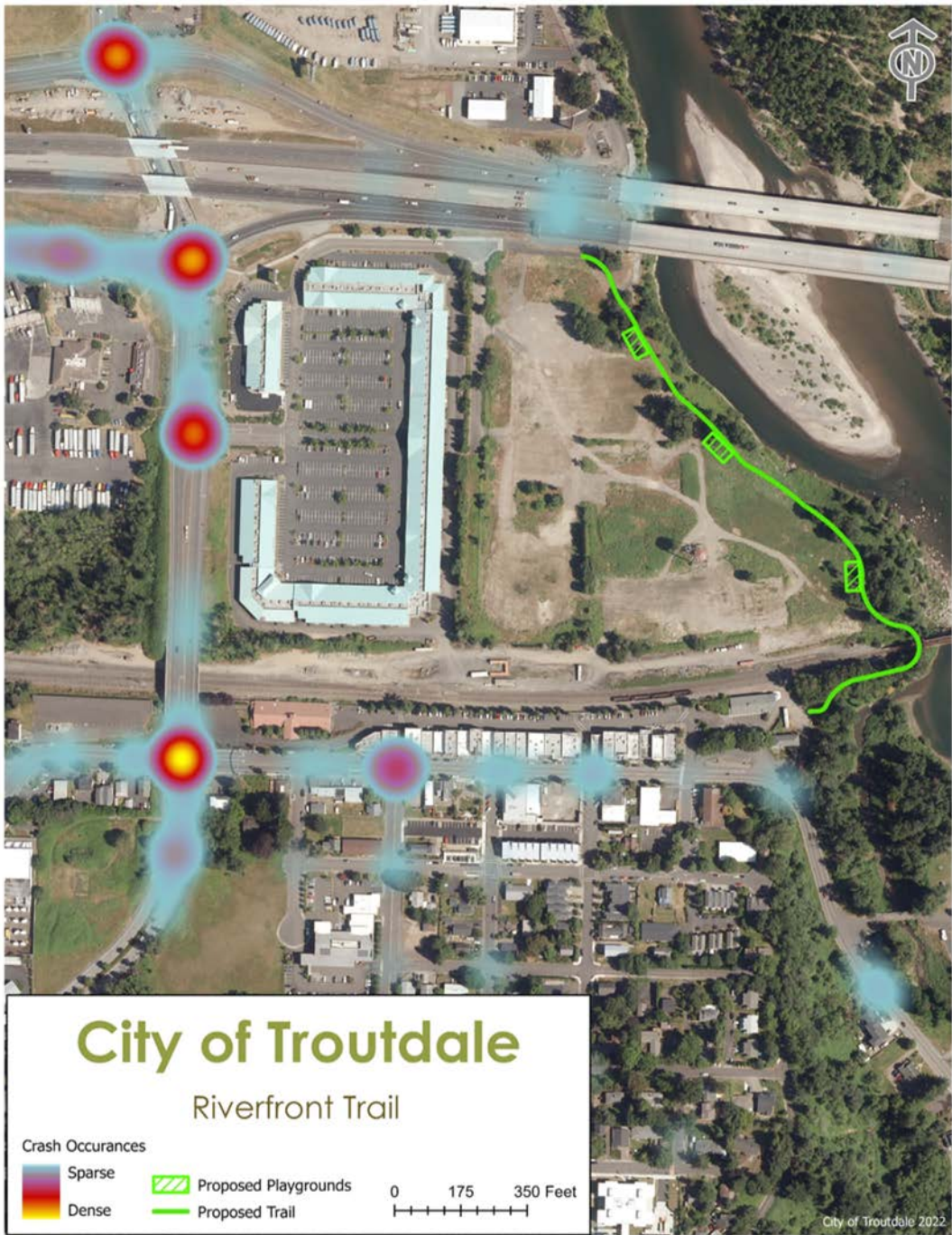
# Bike There!



Legend	Safety
	<b>Established Bikeway</b> paved and mostly separated from motor vehicles, includes cycle track, bike boulevard, multi-use travel, buffered lanes.
	<b>Bike Friendly Street</b> no bike lane, lower traffic and speeds < 25 mph chosen for convenience and directness
	<b>Designated Bike Lane</b> busy streets with bike lanes and wide shoulders, suitable for experienced bikers.
	<b>Helpful connection</b> no bike lane, medium traffic and speeds > 25 mph chosen for convenience and directness
	<b>Bike with Caution</b> streets with higher traffic, higher speeds, narrow lanes and/or sharp curves
	<b>Unpaved Trails</b> suitable for off-road biking. You may encounter challenging terrain, obstacles and unstable surfaces. Bike with caution, always remain in control and safely share the path with other users.
	<b>Local Paths</b>







# 257<sup>th</sup> Ave





# Sandy River Greenway - Park & Trail





# North End: I-84 Trail/Wabun Trail



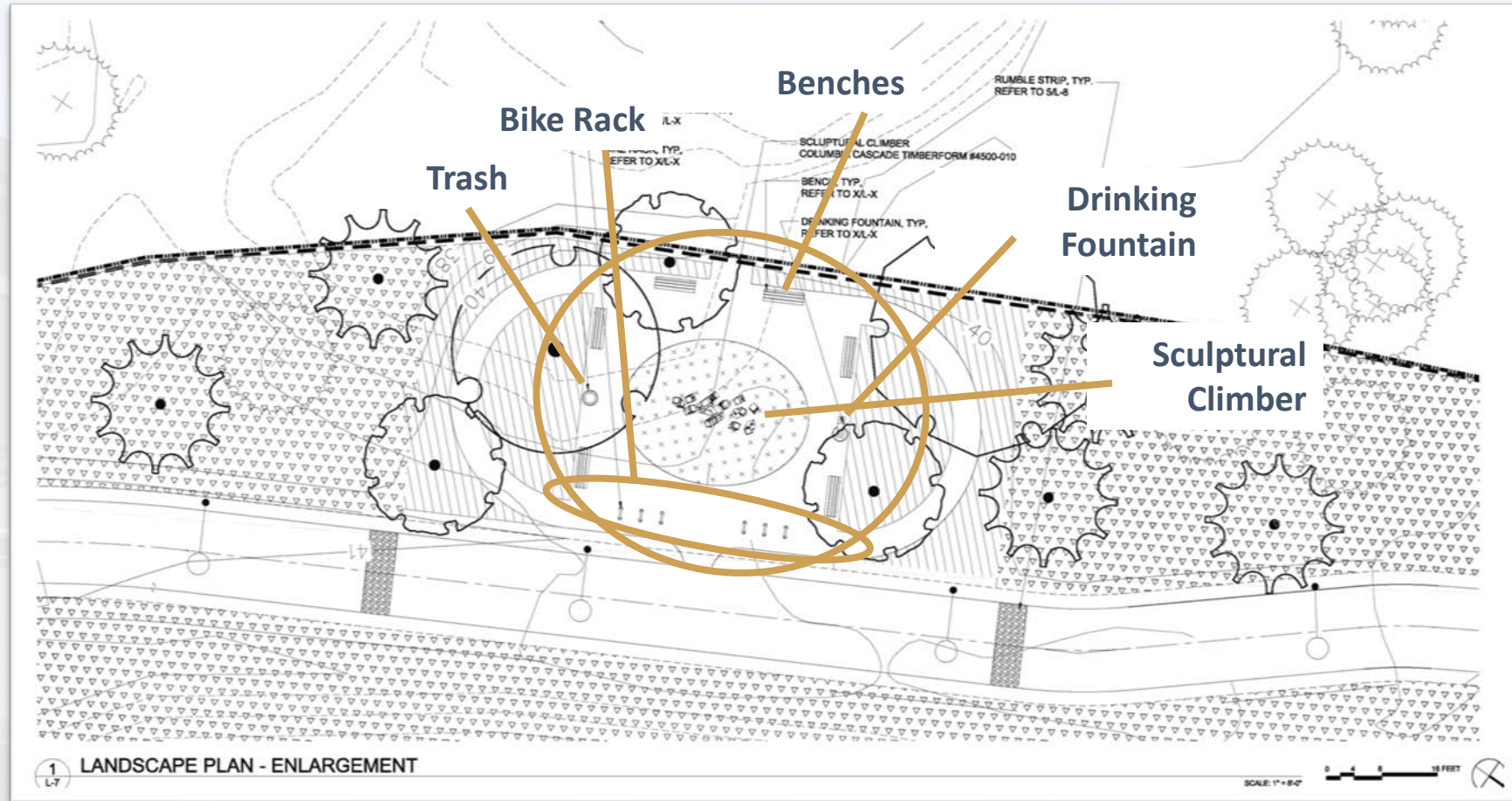


# South end: Visitor Center/Bike hub/Troutdale





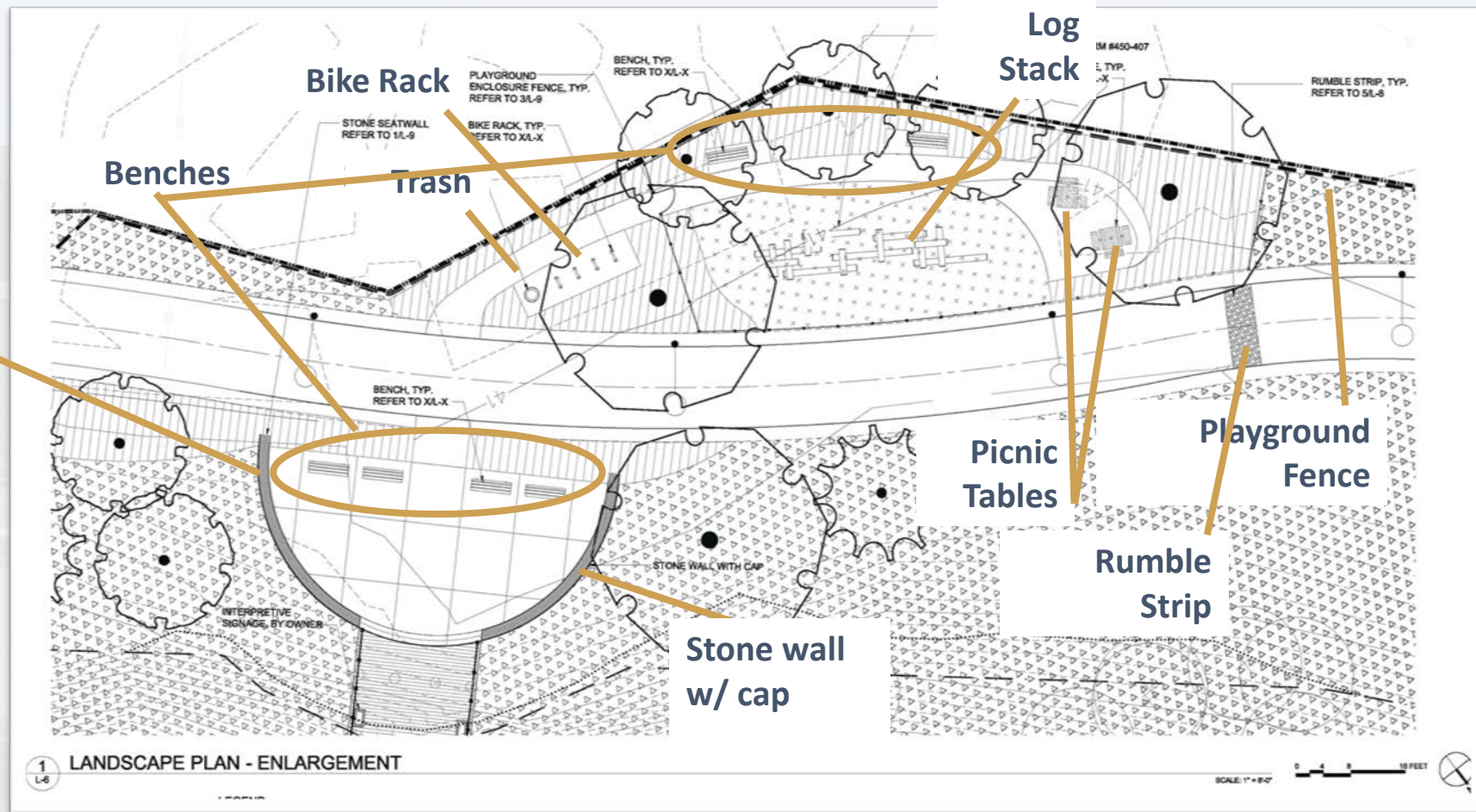
# Amenity Area #3



**KEY PLAN**  
Not to Scale



# Amenity Area #2

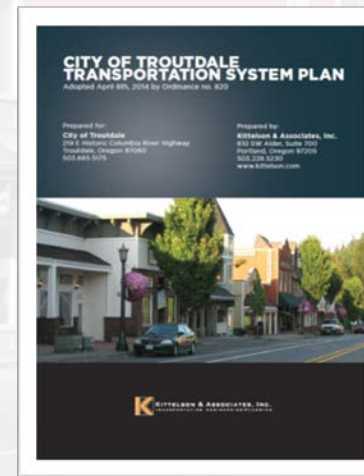
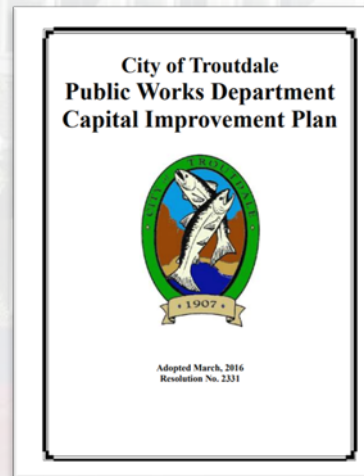
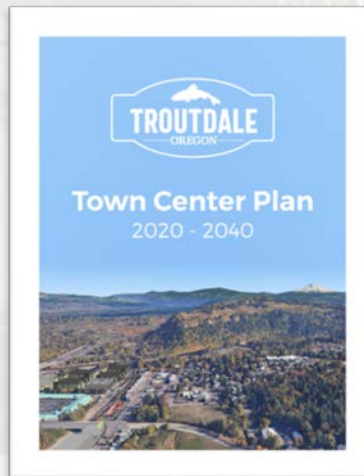
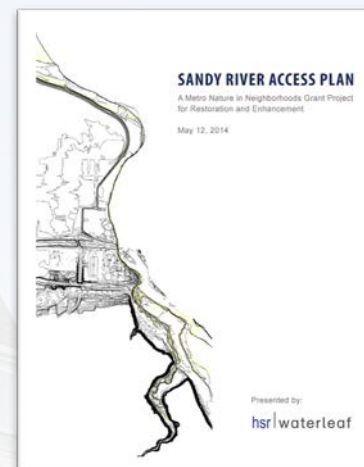
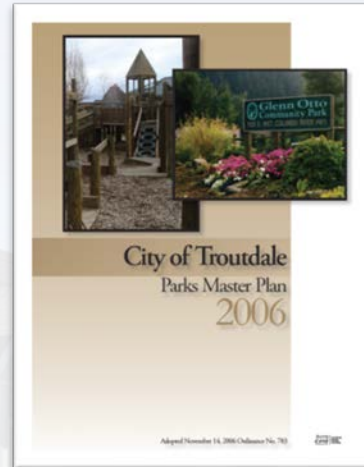
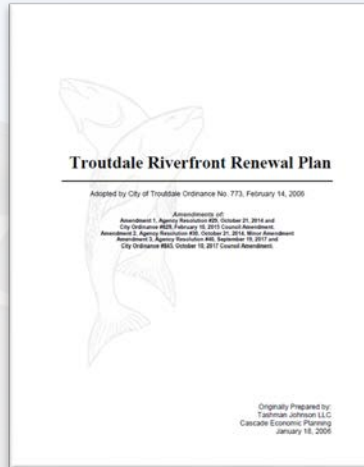


Stone Seatwall





# City Plans





# Project Timeline

---

- 2006 – Urban Renewal Area, Parks Master Plan
- 2014 - Metro Grant, Sandy River Access Plan
- 2019 – 30% Design
  - Open House
- 2020 – Town Center Plan
- 2021/22 – 60% Design
  - Parks Advisory Committee Feedback
  - Development applications: UPRR & City
  - Transportation System Plan
- 2022 – Metro Trails and Nature Bond Grant Application
- 2022 – 90% Design



# Grant Application

---

- **Metro's 2019 Parks and Nature Bond**

- 29 projects, funds limited
- Request: about \$2 million
- Cost: about \$3.5 million

- Comment Period Open through **June 21<sup>st</sup>**

- **Online Survey:** [oregonmetro.gov/rffa](http://oregonmetro.gov/rffa)

- Select "M12: Sandy River Greenway" to comment on this project.

- **More info:** [www.troutdaleoregon.gov/commdev/page/sandy-river-park-trail](http://www.troutdaleoregon.gov/commdev/page/sandy-river-park-trail)



- **Contact:** [Melissa.Johnston@troutdaleoregon.gov](mailto:Melissa.Johnston@troutdaleoregon.gov)
- **More info:** [www.troutdaleoregon.gov/commdev/page/sandy-river-park-trail](http://www.troutdaleoregon.gov/commdev/page/sandy-river-park-trail)
- **Thank you!**

## Questions & Discussion