



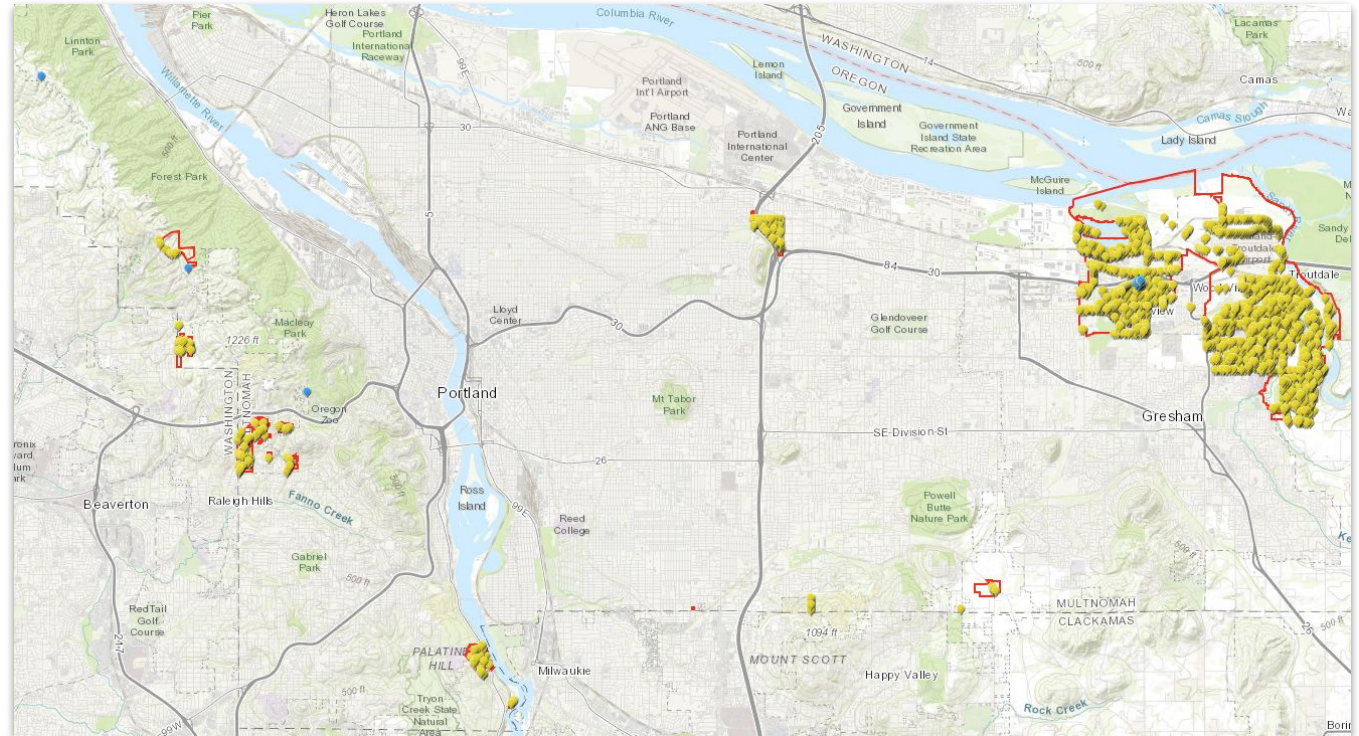
Mid-County Street Lighting District

Chet Hagen
EMCTC
3/18/2024

Multnomah County -
DCS Asset Management

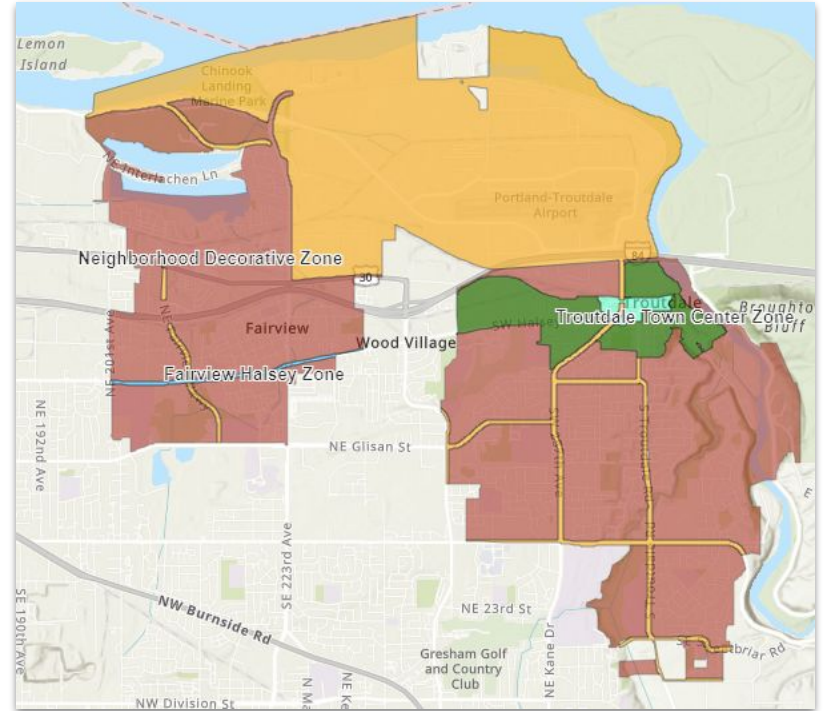
Service Area

- Troutdale
- Fairview
- Maywood Park
- Unincorporated



Stats & Governance

- MultCo Board is our Board
 - \$1.5M Budget, separate from County Budget
- Service District under Chapter 451 in ORS
- 2812 LED Street Lights
 - ~500 decorative
- 0 Full time staff
- All maintenance is contracted out

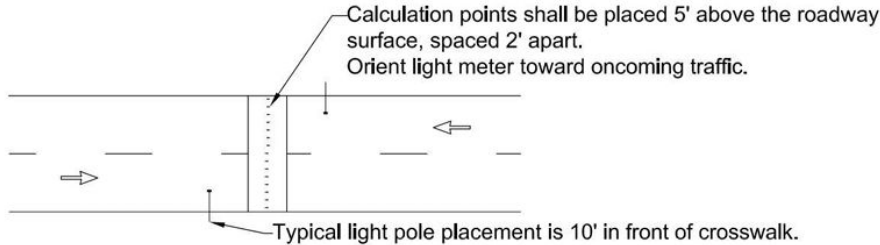


Governance cont.

- Administrative Rules
- Standard Details
- Lighting Level Review & Design Standards

Functional Class	Minimum Average Illuminance	Uniformity (Average to Minimum Ratio)
Arterial/Arterial	1.7 – 3.2 Fc	3.0:1
Arterial/Collector	1.4 – 2.7 Fc	3.0:1
Arterial/Local	1.2 – 2.4 Fc	3.0:1
Collector/Collector	1.1 – 2.2 Fc	4.0:1
Collector/Local	0.9 – 2.0 Fc	4.0:1
Local/Local	0.7 – 1.7 Fc	6.0:1

1. Reference Oregon Department of Transportation, Traffic Lighting Design Manual.



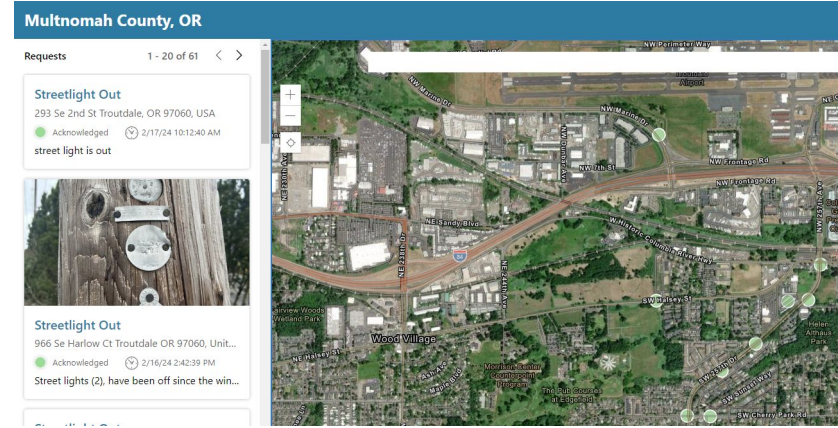
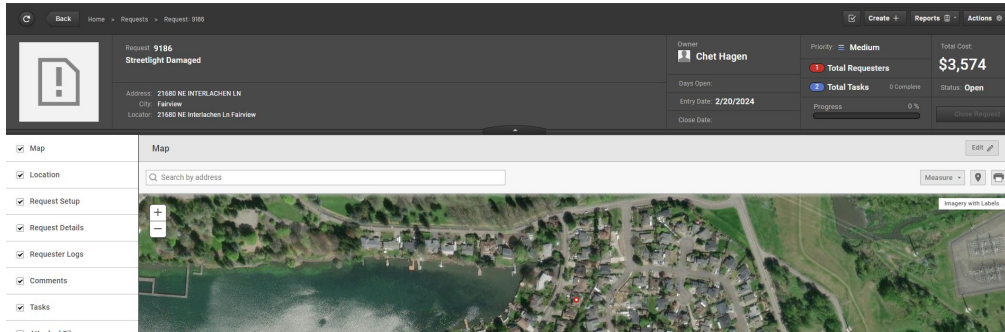
Functional Class	Minimum Average Illuminance	Uniformity (Average to Minimum Ratio)
Arterial	0.8 – 1.5 Fc	3.0:1
Collector	0.6 – 1.2 Fc	4.0:1
Local	0.4 – 0.8 Fc	6.0:1

1. Reference Oregon Department of Transportation, Traffic Lighting Design Manual.



Operations and Maintenance

- SeeClickFix to report outages and damage
- Inventory Warehouse
- Electrical Service Contractors



Capital Projects

1. Development
2. Partner with County/Cities
3. District Funded



Signal Improvements

The County will install ADA-compliant accessible pedestrian signal push-buttons and upgraded pedestrian signal equipment.

Accessibility Improvements

The project will upgrade all sidewalk corners with Americans with Disabilities Act (ADA)-compliant curb ramps.

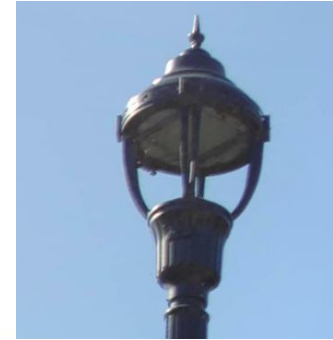
Lighting

Street lights will be replaced to improve visibility at night along S.W. 257th Dr. for all users.

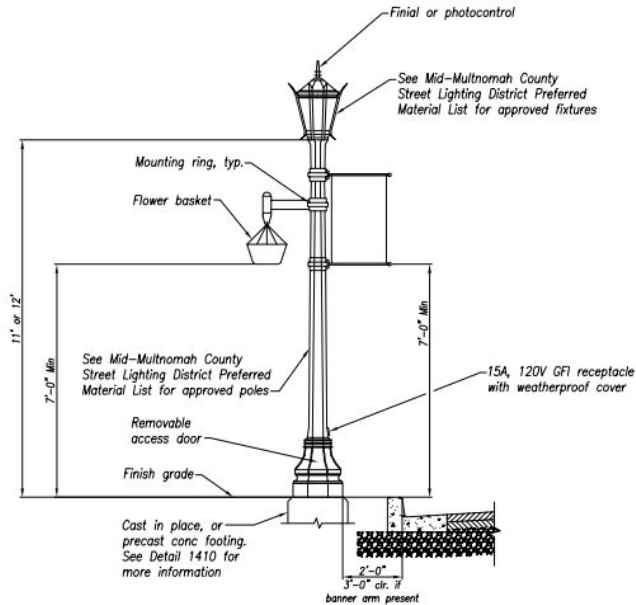


Miscellaneous

- 2 Power Utilities (PGE & Pacificorp)
 - Option C Municipal System
- Funded by Assessment on Property Taxes
- 18 Light Fixture Models
 - 5 Unique styles



Questions?



TROUTDALE HISTORIC DOWNTOWN POLE – DETAIL
SCALE: 1/4"=7'-0"

