



WATERFALL CORRIDOR

IMPROVED ACCESS

Summer 2022 Pilot

Presentation to Multnomah County BPCAC
February 9, 2022

Context

- Multi-Agency coordination
- Continuing collaboration
- Shared goals and outcomes
- Baseline data



Historic Columbia River Highway Congestion and Transportation Safety Improvement Plan

FINAL June 2019

Congestion and Safety Plan Outcomes

Strategy	Issue addressed	Status
Traffic Flagger at Multnomah Falls	Congestion on the Historic Highway	2 years of pilots completed
Gorge Forum	Continued cooperation and long-term plan	Continuing to meet, led by Commissioner Stegmann
Large Vehicle Restriction	Safety conflicts on narrow road	Complete
Reduce Speed limits	Safety	Complete
Satellite Parking at Benson Lake	High parking demand	In process
Long-term transit funding and governance	Transit support – alternate modes	Complete
Install Road closure gates on Historic Highway	Efficiency during emergencies/road closures	In process
Historic Highway Shuttle service	Alternate transportation support in corridor	1 year pilot complete

Projects not yet implemented

- Expanded Park and Ride facilities
- Parking management
- Visitor Information hub outside of corridor
- Vehicle use restrictions on the Historic Highway

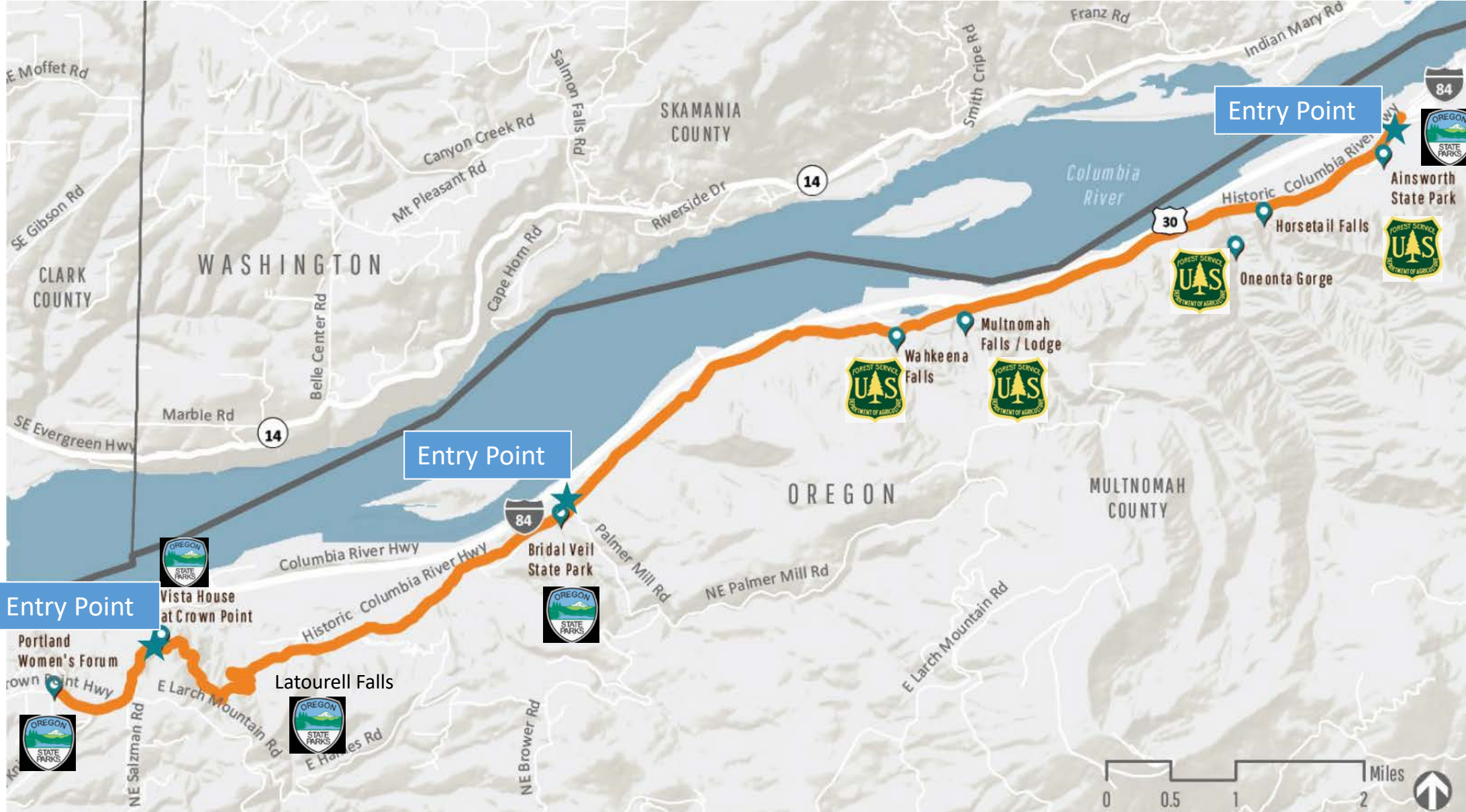
Pilot Goals

Improve Safety

Reduce
Congestion

Improve Access
and Visitor
Experience

Pilot Concept



Improve Safety

- Emergency response
- Exit 31
- Pedestrian access



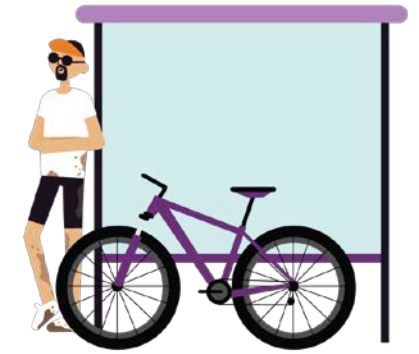
Reduce Congestion

- Provide viable/reliable multi-modal options
- Spread visitation throughout the day and to lower-visitation days



Improve visitor experience

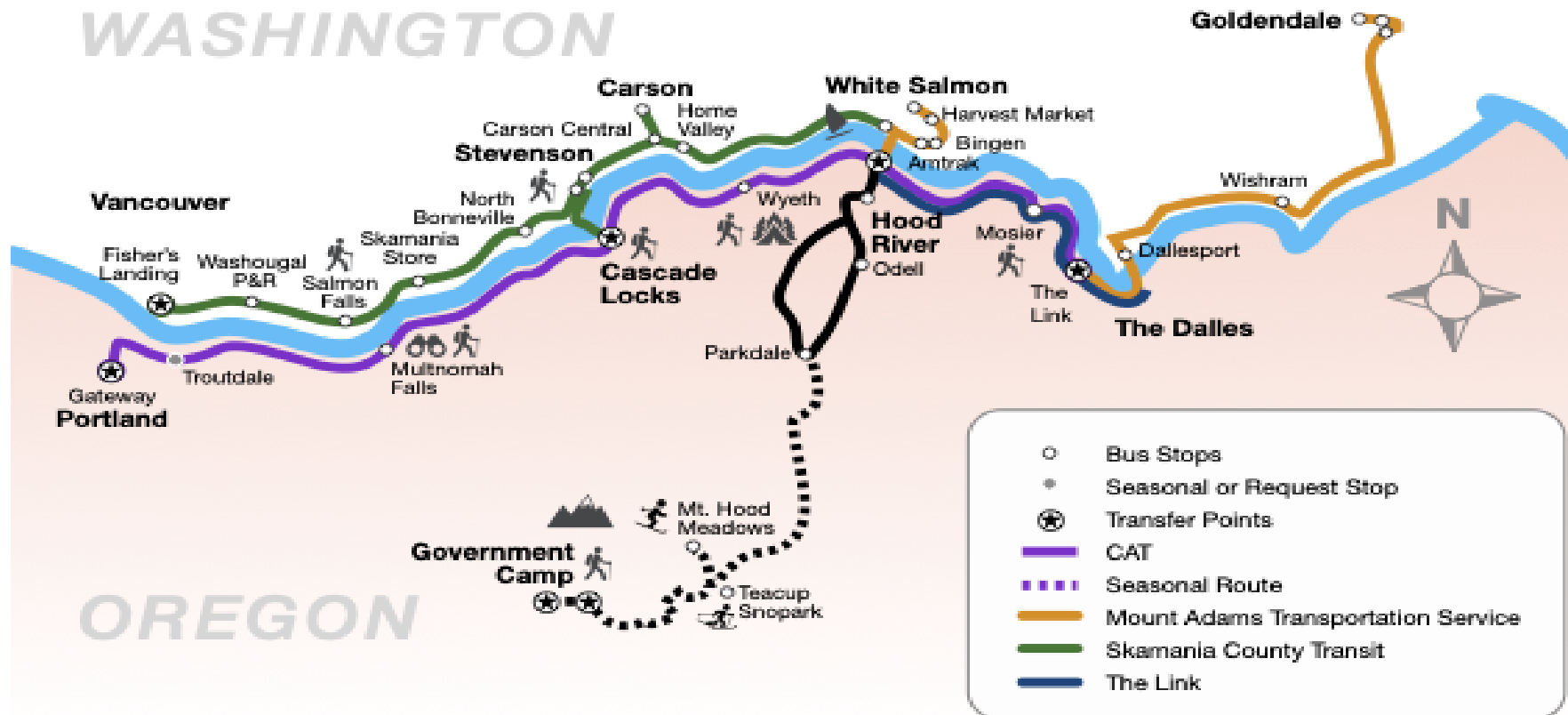
- Reduce frustration
- Expand transportation options



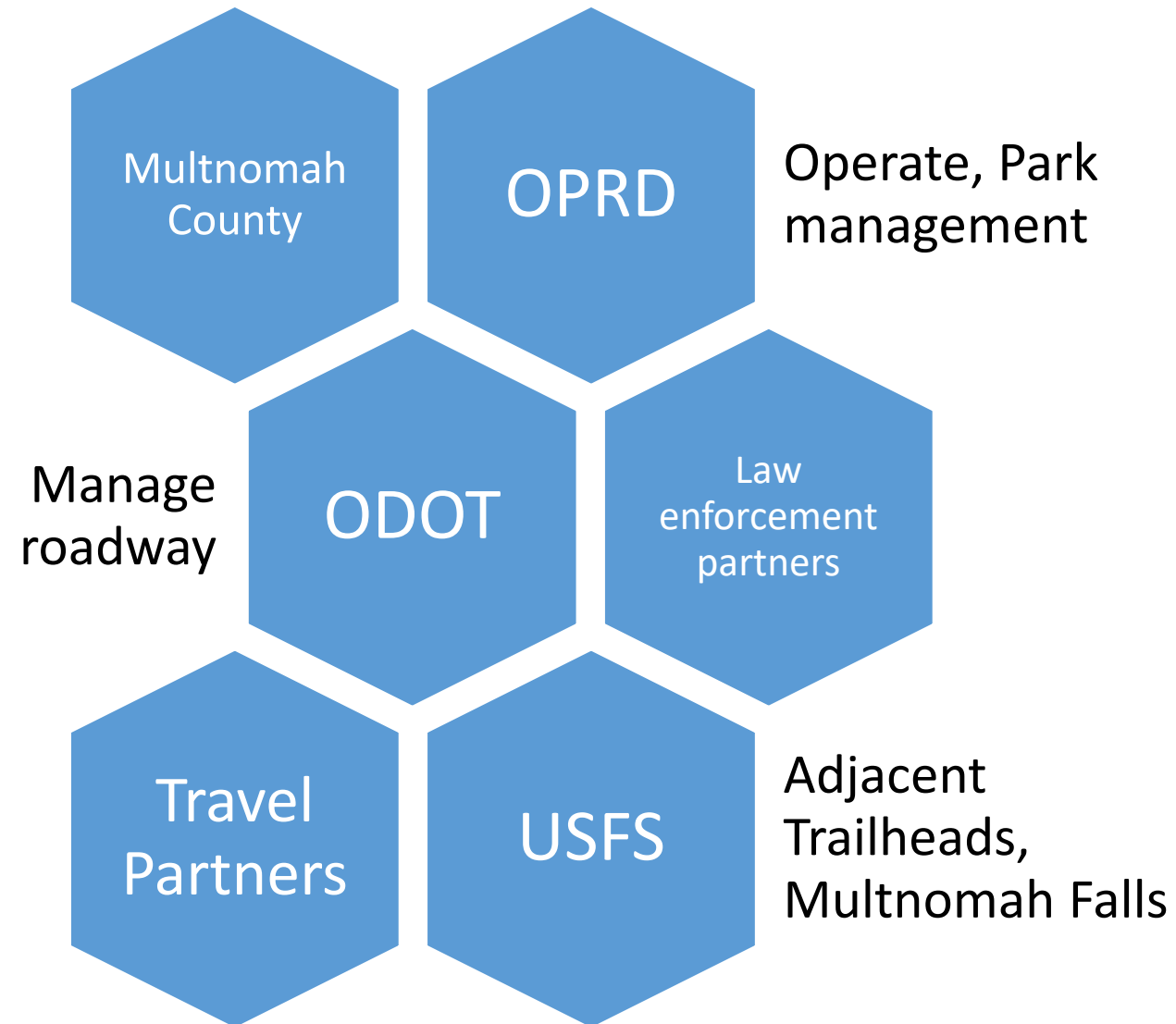
GOrgie
Pass



Transit in the Gorge



Collaborative Approach



Questions

- Allison Boyd, Senior Planner, MultCo Transportation Division
Allison.Boyd@multco.us
- Terra Lingley, Columbia River Gorge National Scenic Area Coordinator,
Oregon Department of Transportation
terra.m.lingley@odot.oregon.gov