



Urban Design and Aesthetics Working Group Mtg #1

Background Info and Virtual Walking Tour

Department of Community Services
Transportation Division

September 29, 2020

Project Overview



Background

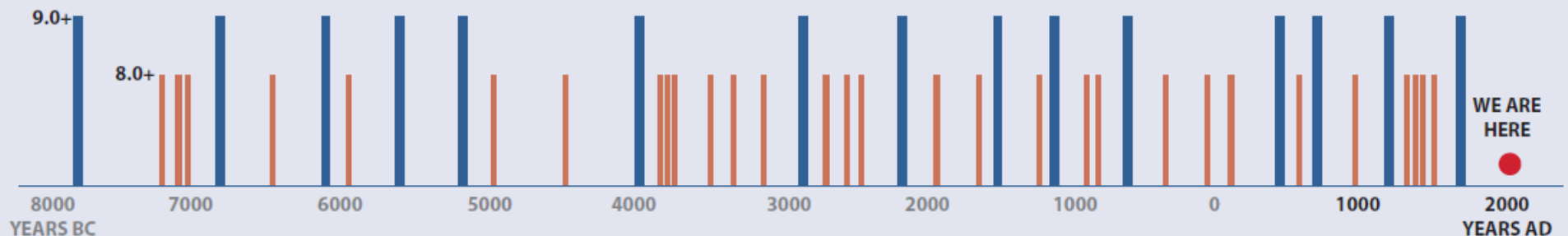
REGIONAL
EARTHQUAKE
RISK

1 in 3 chance of
magnitude 8+
earthquake
within 50 years



CASCADIA SUBDUCTION ZONE (CSZ) EARTHQUAKE

Last major quake in Oregon occurred 317 years ago, a timespan that exceeds 75% of the intervals between the major quakes to hit Oregon over the last 10,000 years.



Project Overview

Purpose and Need



Create a seismically resilient Burnside Street lifeline crossing of the Willamette River that will remain fully operational and accessible for vehicles and other modes of transportation immediately following a major CSZ earthquake.



Support the region's ability to provide rapid and reliable emergency response, rescue and evacuation after a major earthquake, as well as enable post-earthquake economic recovery.



Provide a long-term, low-maintenance and safe crossing for all users.

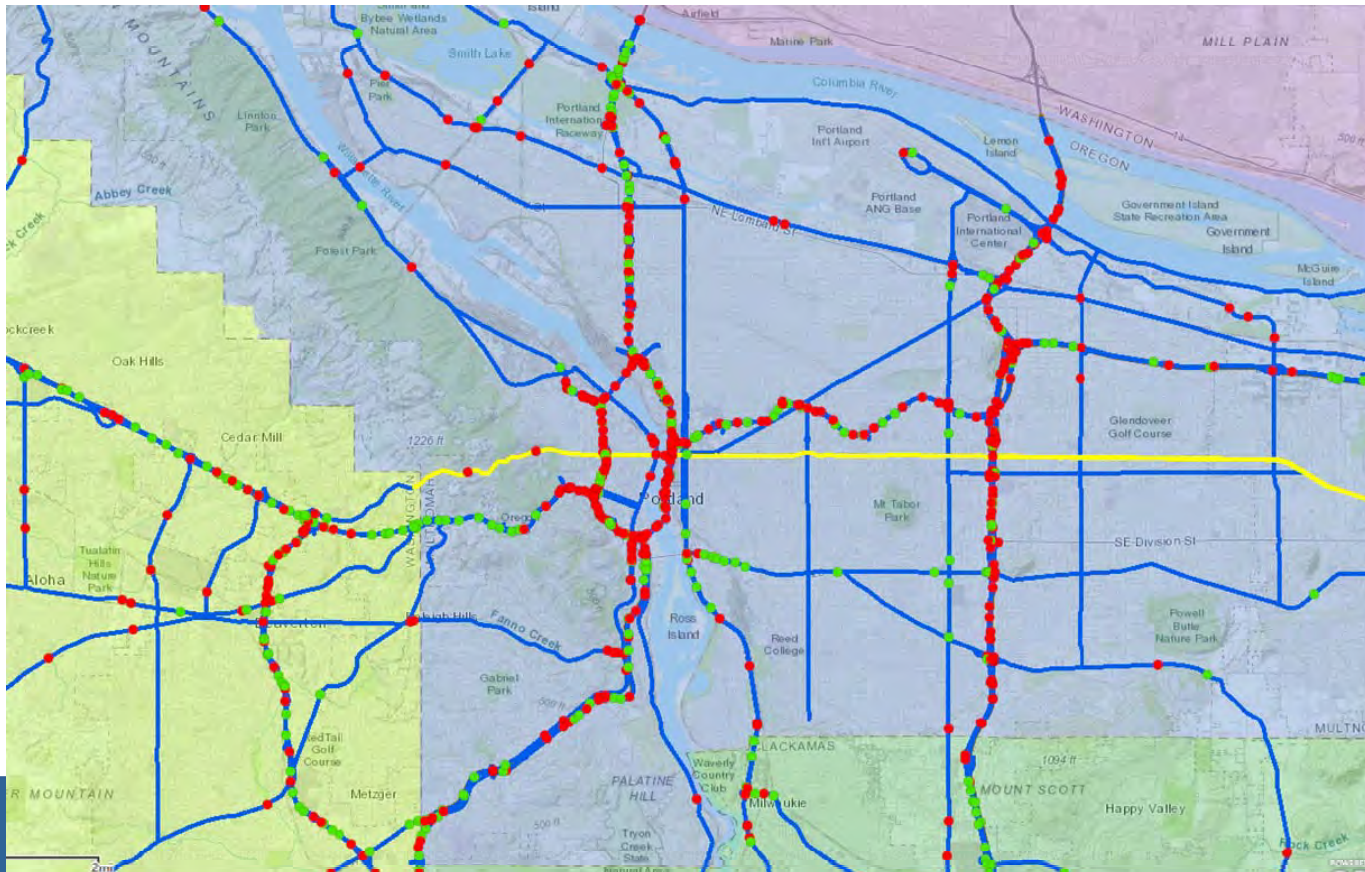


Project Overview



Why Burnside?

- Regional lifeline route
- Runs almost 19 miles, from Washington County to Mount Hood Highway (US 26)
- Located in the heart of downtown, it is a key link across the Willamette River
- Fewest risks of having overpasses collapse on it during an earthquake

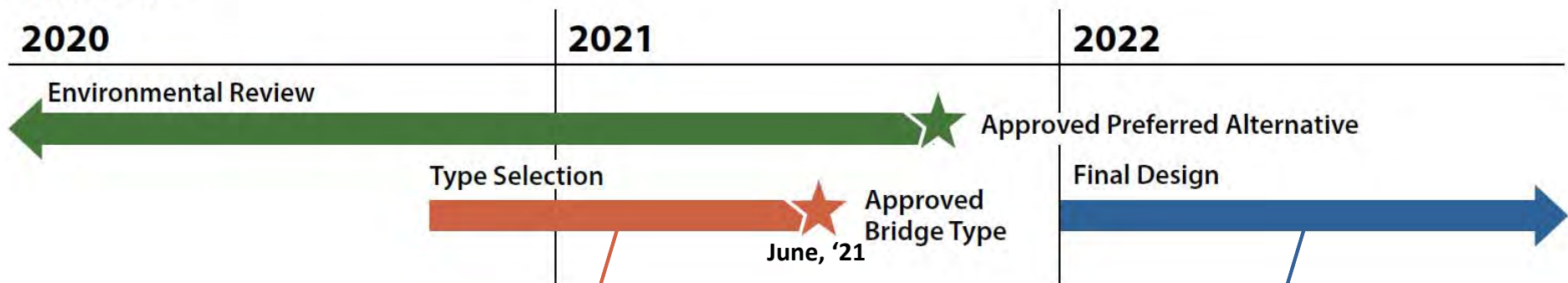


Bridge Type Selection Phase



Overview

Schedule



Type Selection Phase Decisions (TS)

- Provide preliminary design information for federal permitting (by June, 2021)
- Select bridge “form” (i.e., fixed and movable bridge types)
- Develop preliminary Visual Design Guidelines

Final Design Phase Decisions (FD)

- Perform detailed bridge design
- Finalize and implement the Visual Design Guidelines



NEPA Evaluation Criteria



Final Topics

- Seismic Resiliency
- **Visual and Aesthetics**
- Community Quality of Life
- Natural Resources and Sustainability
- Equity
- Pedestrians, Bicyclists & People with Disabilities
- Crime Reduction and Personal Safety
- Motor Vehicles, Freight & Emergency Vehicles
- Business and Economics
- River Navigation
- Parks and Historic Resources
- Transit
- Fiscal Responsibility



Visuals and Aesthetics Evaluation Criteria



8. Visual and Aesthetics

Long Term	<p>8a.1 Minimize adverse impacts to existing views and view corridors.</p> <ul style="list-style-type: none"> • <i>Measure: Qualitative assessment of potential impacts on existing views and view corridors (consider historic districts' design criteria and City-designated view corridors).</i> • <i>Measure: Qualitative assessment of potential compatibility/conflicts with existing urban design features.</i> <p>8a.2 Maximize-aesthetic experience for all users approaching, on, and under the bridge.</p> <ul style="list-style-type: none"> • <i>Measure: Qualitative assessment of visual and aesthetic opportunities (based on conceptual designs) for users on and under the bridge during both daytime and nighttime hours. Consider opportunities related to scale, forms and materials, viewing, wayfinding, transitions to and from public spaces, lighting/shade/shadows, and activating areas for public use (consider Portland design guidelines).</i> <p>8a.3 Create opportunity for a crossing that provides an iconic/demonstrative visual experience.</p> <ul style="list-style-type: none"> • <i>Measure: Qualitative assessment of potential to develop gateways, new views, processional experiences, and demonstrative and/or iconic visual experiences of and on the bridge.</i>
During Const.	N/A



Project Context

Bridge Site Plan

West (Downtown) side



East side



① Existing - West Bridgehead



② Portland Rescue Mission



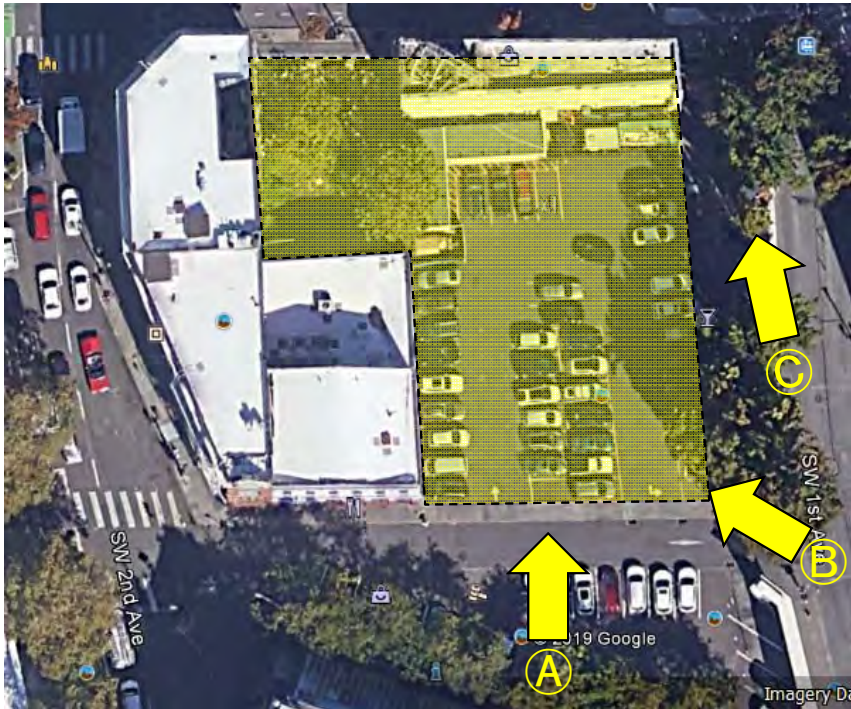
③ Saturday Market Building

From Burnside St (Facing South)



③ Saturday Market Building

From SW Ankeny St (Facing North)



④ TriMet - Skidmore Fountain Station



⑤ Univ of Oregon Building

From Burnside Street



⑤ Univ of Oregon Building

Views from below Burnside Street



⑥ Mercy Corps Building

View from Burnside Bridge



7 Waterfront Park / Ankeny Plaza



⑧ Japanese American Memorial Plaza



⑧ Japanese American Memorial Plaza



⑨ Willamette River

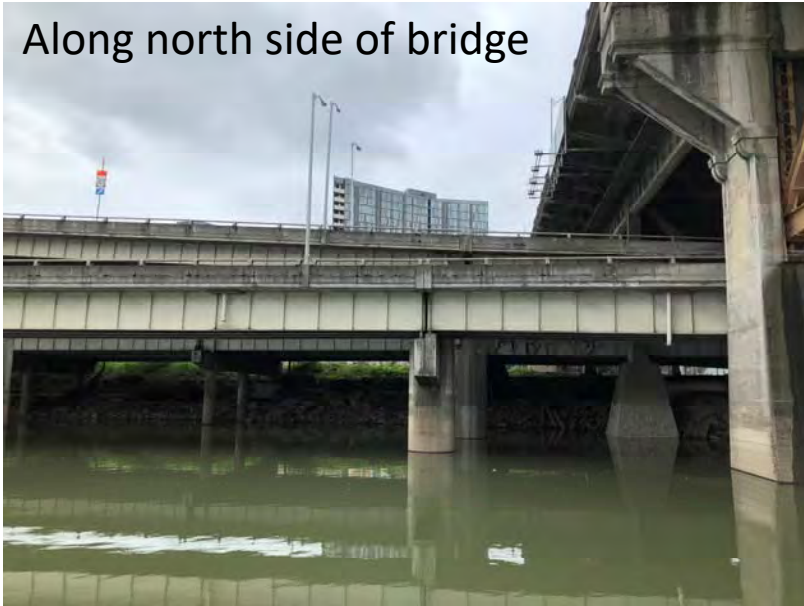
View looking northeast from waterfront park



9 Willamette River

Views

Along north side of bridge



Along south side of bridge



On bridge



On bridge



10 Eastbank Esplanade

Views



11 I-5 and I-84 Freeway / UPRR

Aerial View



11 I-5 and I-84 Freeway / UPRR

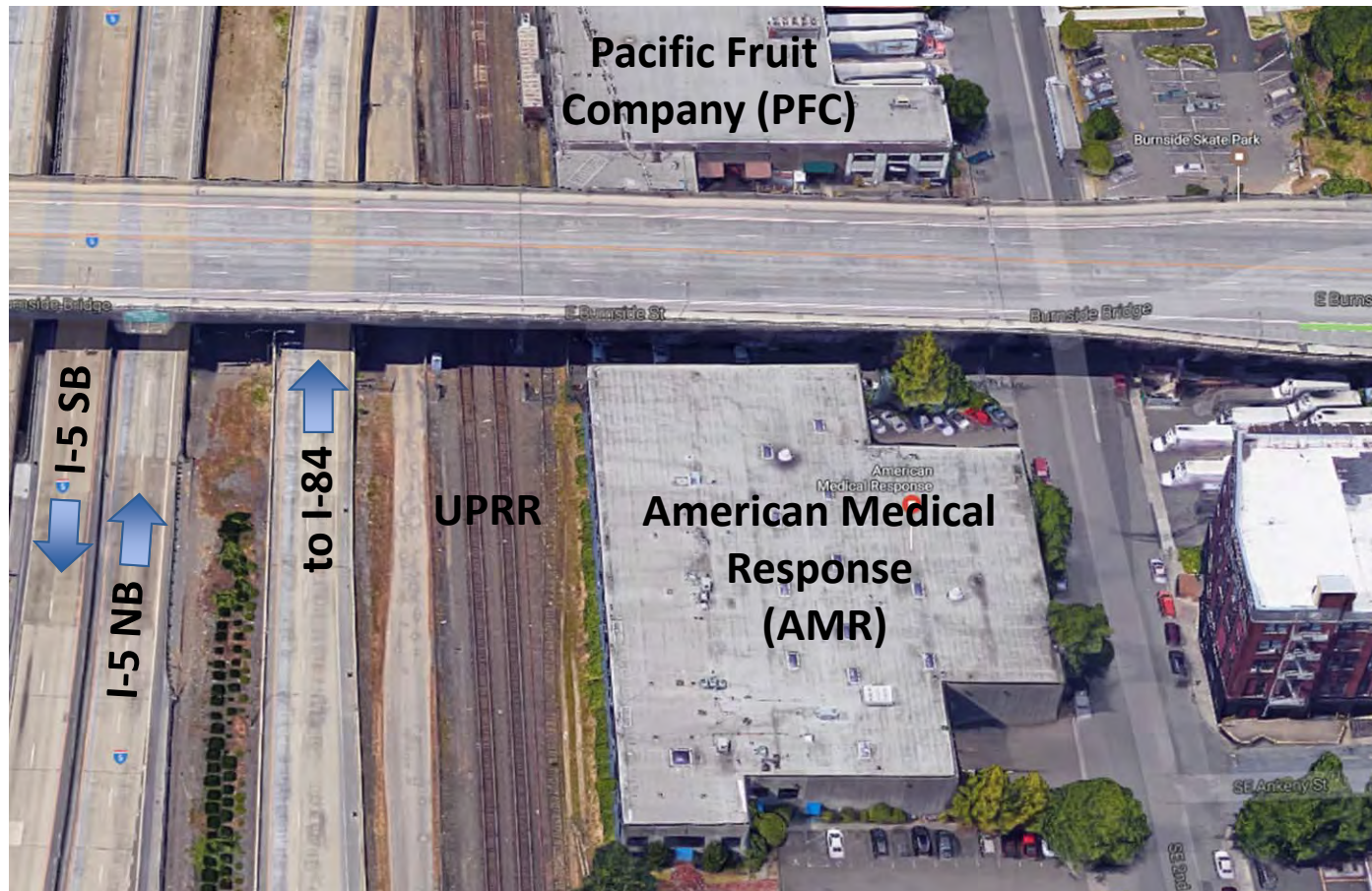
Freeway views



12 AMR and Pacific Fruit Company



Aerial View



12 AMR and Pacific Fruit Company

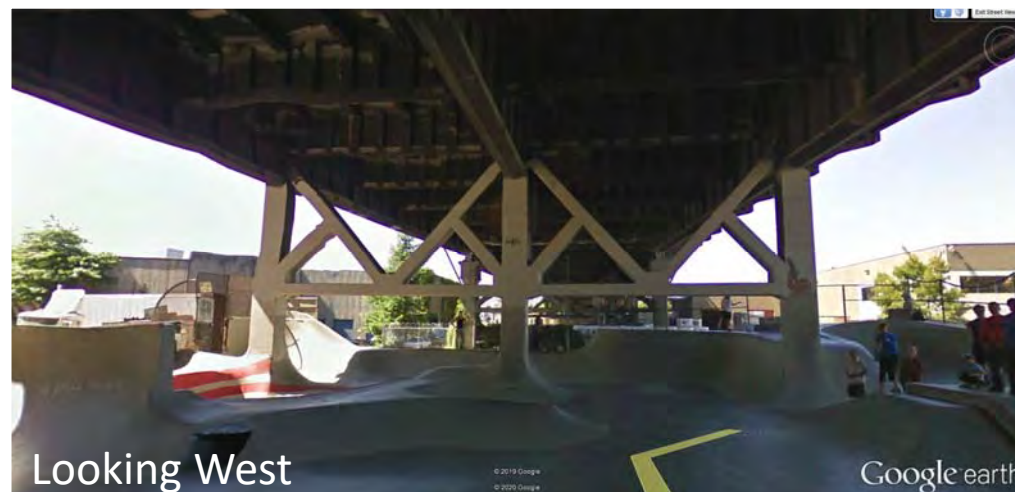
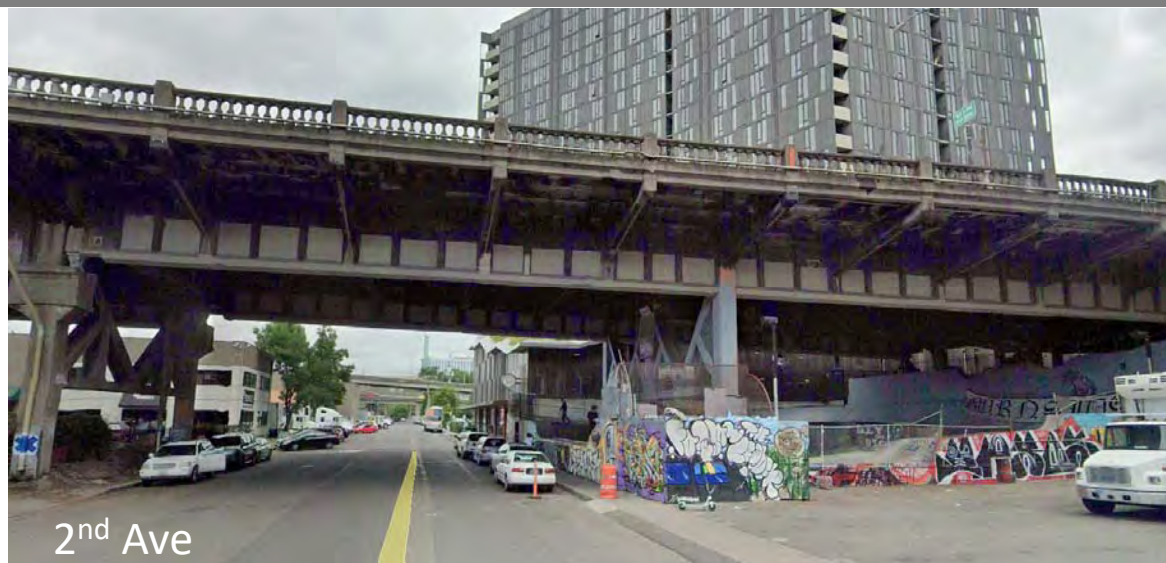


From SE 2nd Ave (Facing Northwest)

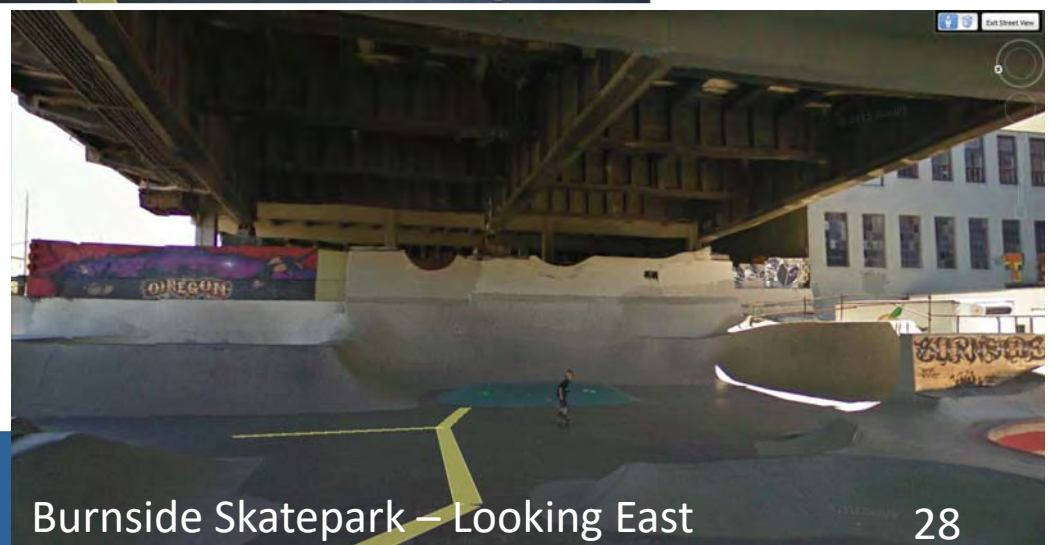


13 Burnside Skatepark

Views



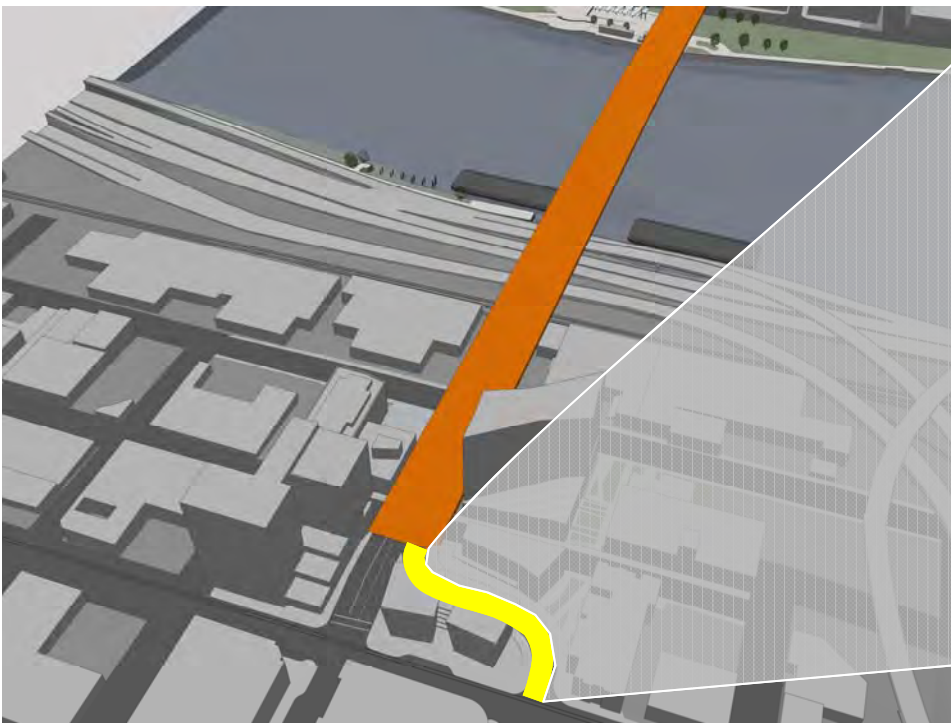
13 Burnside Skatepark



14 East bridgehead



14 East bridgehead

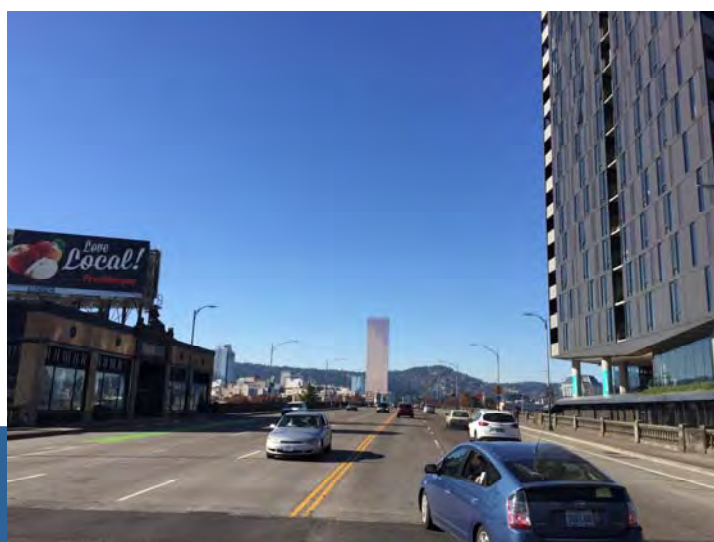
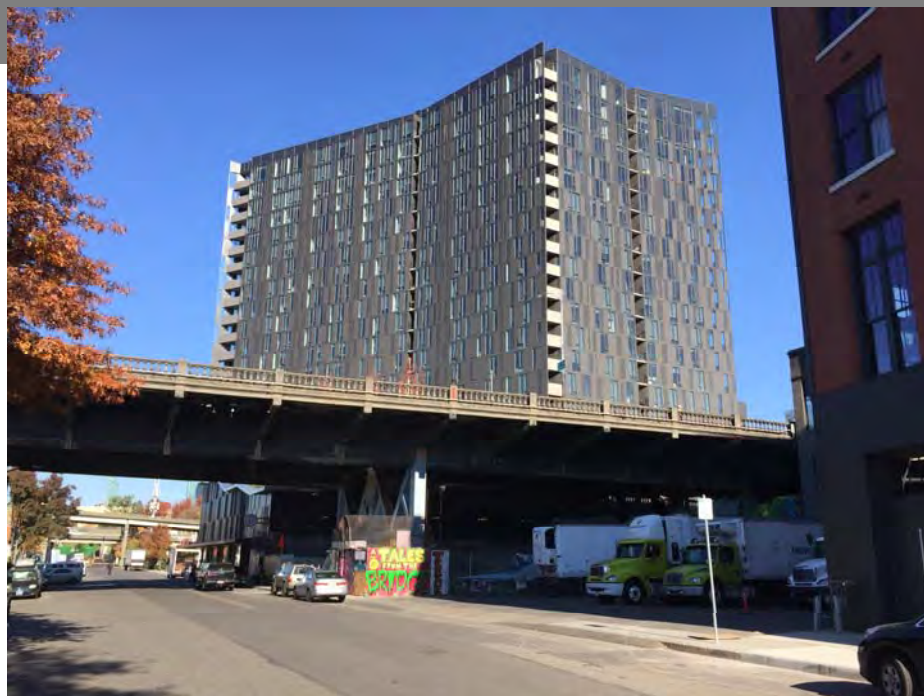


Existing NE Couch St. Approach

15 CBRE / Old Town Storage Building



16 The Yard Building



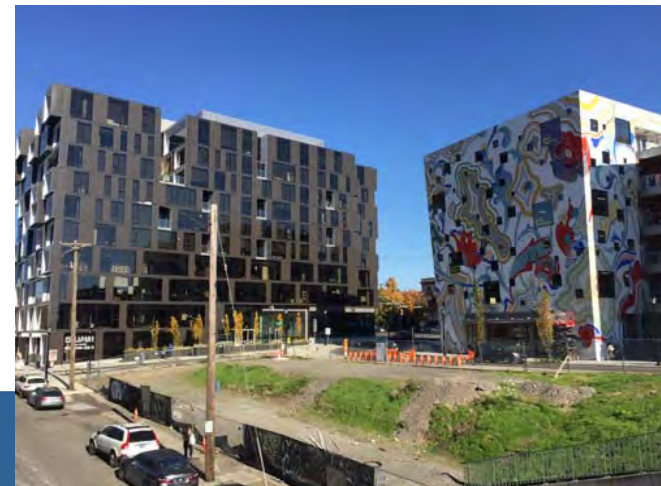
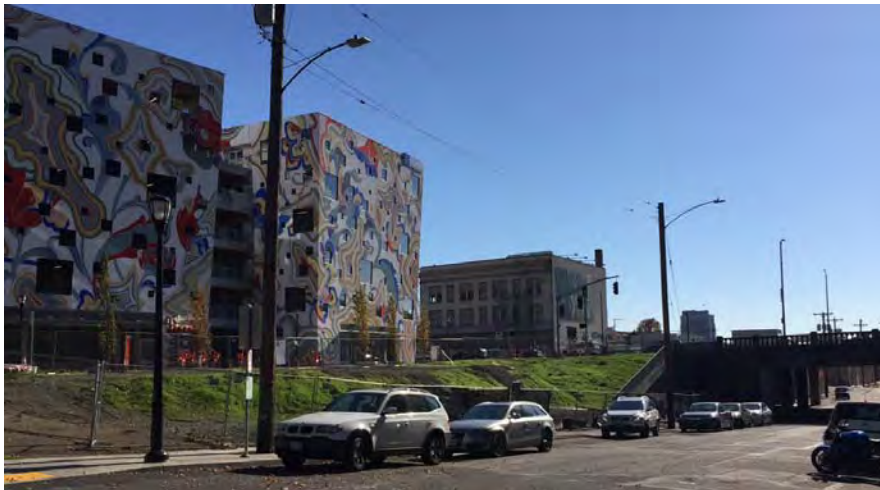
17 5MLK Building

Views



18 The Fair-haired Dumbbell Building

Views from Burnside Bridge



19 Slate Building

