

Troutdale is the connection between the Portland Metro area and world-class outdoor recreation areas like the Columbia River Gorge and Mount Hood. It is the gateway to key regional tourist destinations.

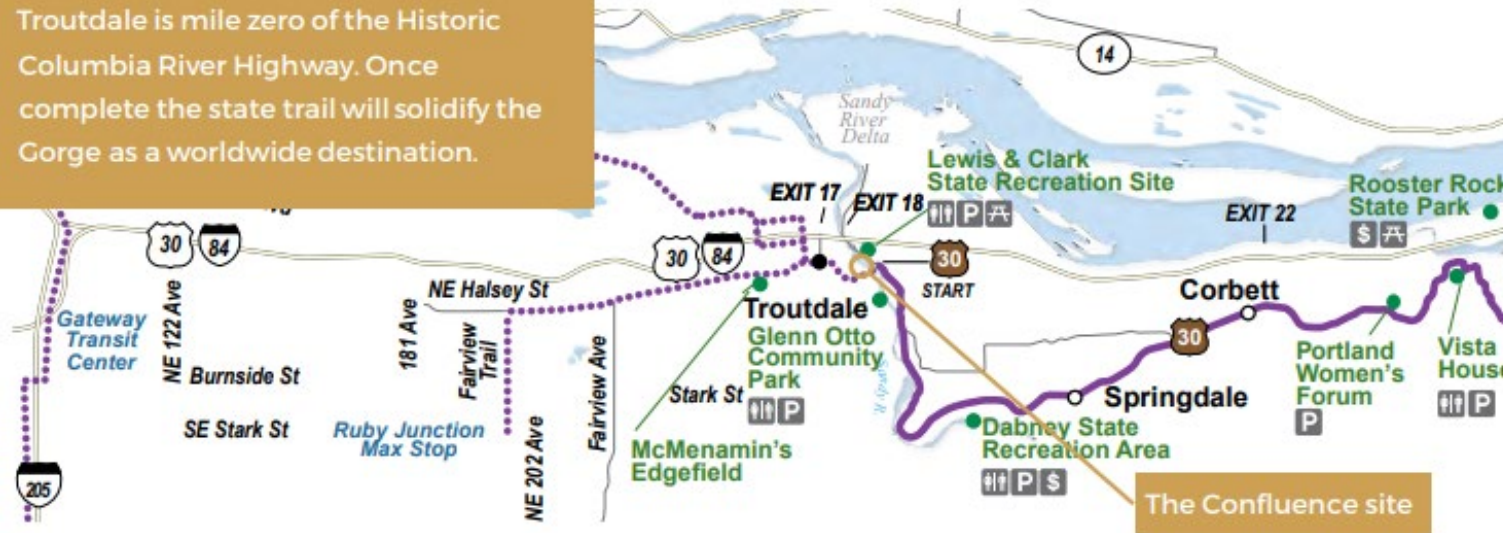


Presenter:
Frank Stevens
Troutdale Resident
Transportation Researcher

Troutdale is seeking funds to construct a bike hub at the Gateway to the Gorge Visitor Center as part of the the Gorge Hub bike program

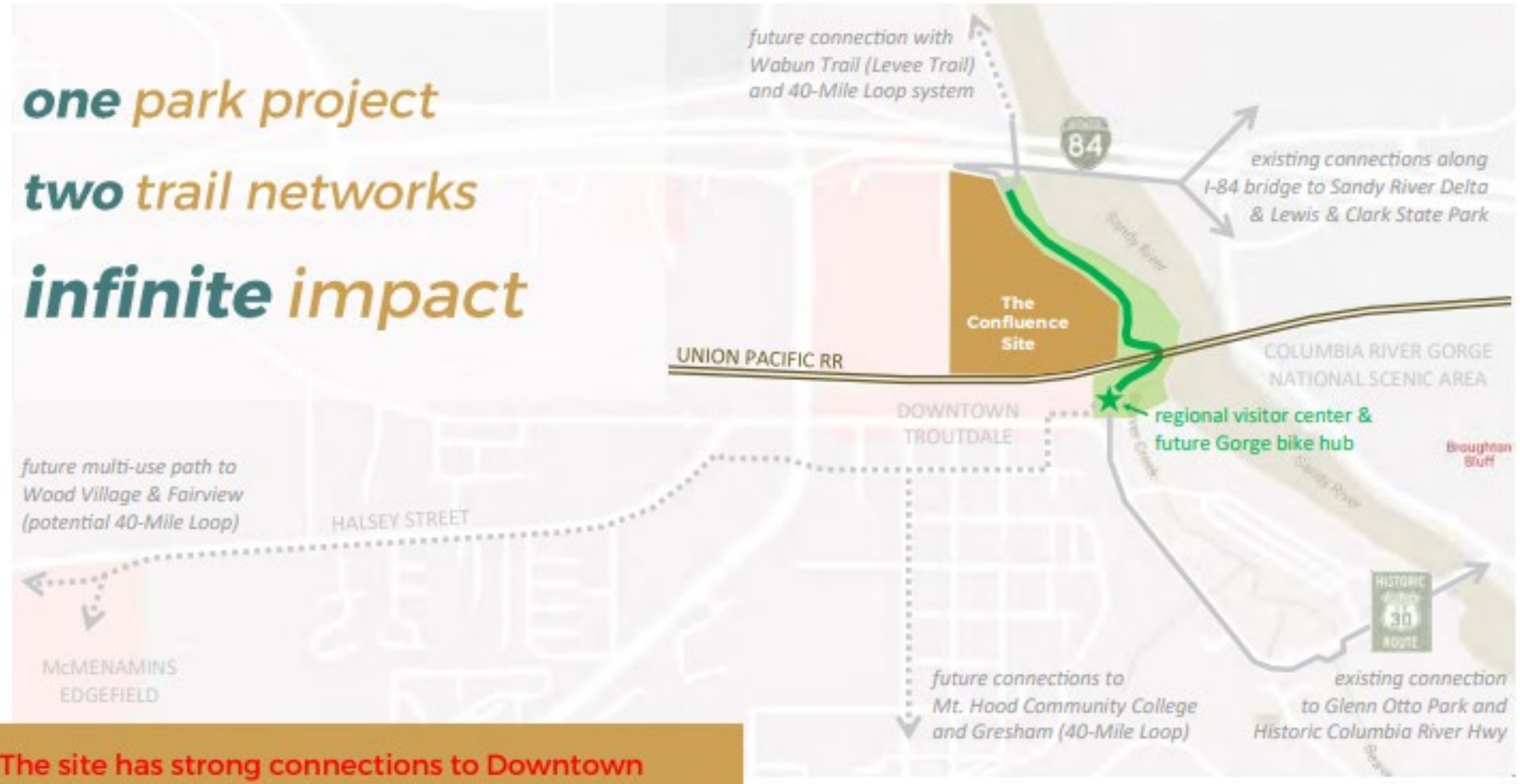


Troutdale is mile zero of the Historic Columbia River Highway. Once complete the state trail will solidify the Gorge as a worldwide destination.



Historic Columbia River Highway State Trail map

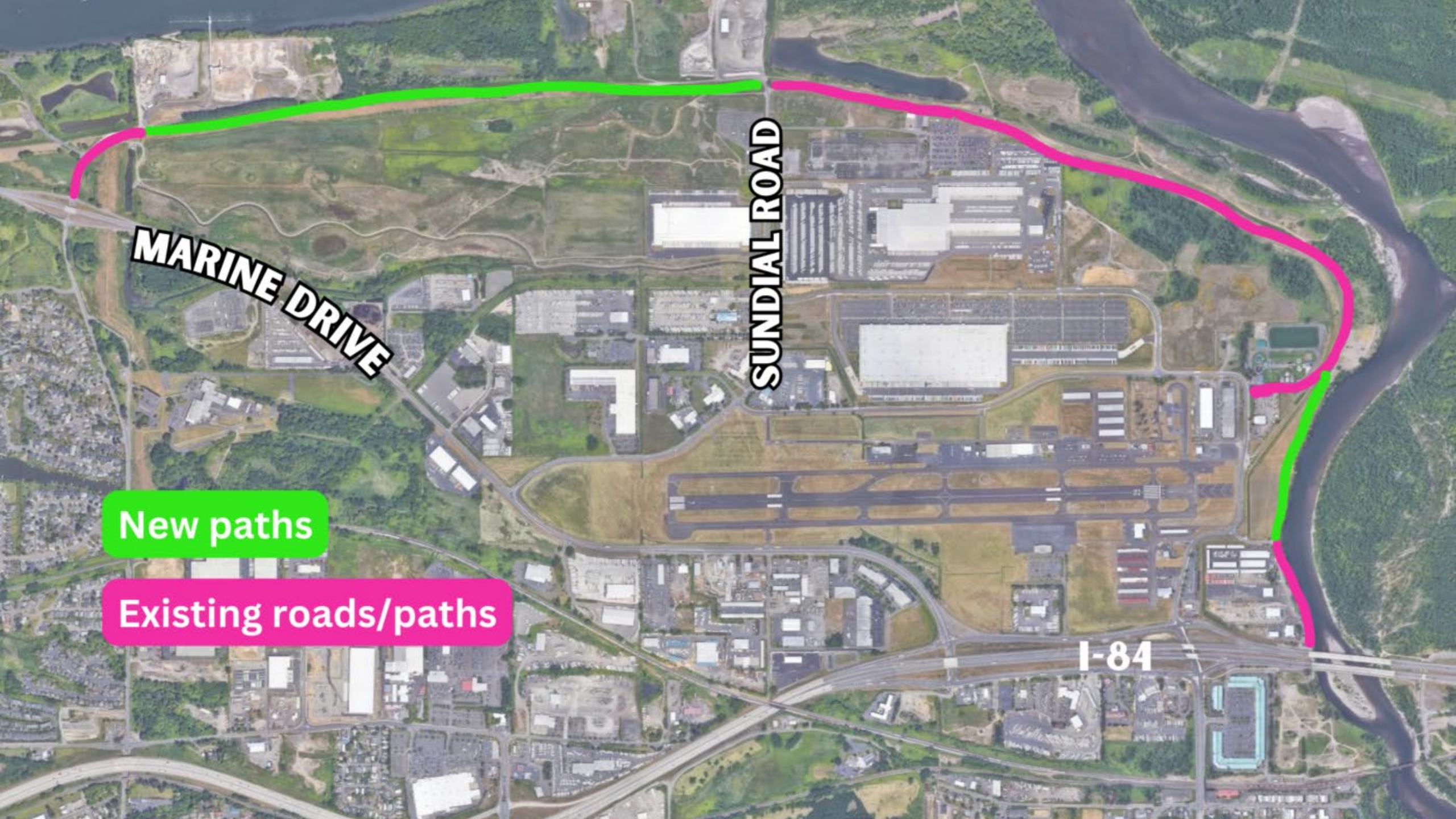
one park project
two trail networks
infinite impact



The site has strong connections to Downtown and outdoor recreation.



CH'AK CH'AK TRAIL



MARINE DRIVE

SUNDIAL ROAD

I-84

New paths

Existing roads/paths



View of the site from the I-84 pedestrian/bike bridge



The Confluence is 16 acres of developable land adjacent to park & trail space

Sandy River Trail



Current access to the site under I-84 to the north, connecting to the 40-Mile Loop regional bike/pedestrian trail



Current access to the site over I-84 via a bike/pedestrian bridge to the north, connecting to the Sandy River Delta natural area and Lewis and Clark State Park (Image credit: BikePortland)

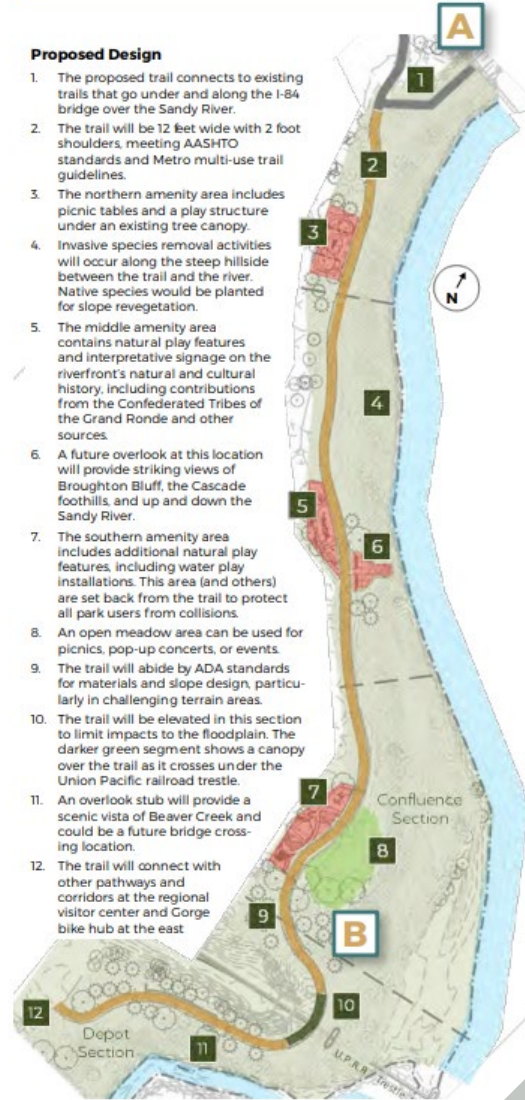


Current access to the site under the railroad trestle to the site, connecting to the future bike hub, visitor's center and Downtown

90% park design connecting site to regional trail network and to Downtown Troutdale under railroad

Proposed Design

1. The proposed trail connects to existing trails that go under and along the I-84 bridge over the Sandy River.
2. The trail will be 12 feet wide with 2 foot shoulders, meeting AASHTO standards and Metro multi-use trail guidelines.
3. The northern amenity area includes picnic tables and a play structure under an existing tree canopy.
4. Invasive species removal activities will occur along the steep hillside between the trail and the river. Native species would be planted for slope revegetation.
5. The middle amenity area contains natural play features and interpretative signage on the riverfront's natural and cultural history, including contributions from the Confederated Tribes of the Grand Ronde and other sources.
6. A future overlook at this location will provide striking views of Broughton Bluff, the Cascade foothills, and up and down the Sandy River.
7. The southern amenity area includes additional natural play features, including water play installations. This area (and others) are set back from the trail to protect all park users from collisions.
8. An open meadow area can be used for picnics, pop-up concerts, or events.
9. The trail will abide by ADA standards for materials and slope design, particularly in challenging terrain areas.
10. The trail will be elevated in this section to limit impacts to the floodplain. The darker green segment shows a canopy over the trail as it crosses under the Union Pacific railroad trestle.
11. An overlook stub will provide a scenic vista of Beaver Creek and could be a future bridge crossing location.
12. The trail will connect with other pathways and corridors at the regional visitor center and Gorge bike hub at the east.





Presenter:
Frank Stevens
Troutdale Resident
Transportation Researcher

A Tale of Two Missing Bollards

Independent Study of Ch'ak Ch'ak Shared Use Path and connecting routes (I84 SUP) , June 10, 2024 – Sept 10, 2024



Google

Please join us for a ribbon-cutting ceremony to commemorate the completion of the Ch'ak Ch'ak Trail, an integral three-mile segment of the 40-Mile-Loop Trail in Troutdale and Fairview, and a groundbreaking ceremony for the Sandy Riverfront Park and Trail, a 3.5 acre waterfront park and trail along the Sandy River.

Celebrate the partnerships, dedication, and communities that have played a vital a role in the completion of the Ch'ak Ch'ak Trail and the realization of the Sandy Riverfront Park and Trail.

Thursday, October 10, 2024

1:30 – 2:00pm: Groundbreaking for Sandy Riverfront Park and Trail
2:00 – 3:00pm: Ribbon cutting for Ch'ak Ch'ak Trail

Parking – you can park by the Ch'ak Ch'ak Trailhead and walk (less than 5 minutes) south on Harlow Road under the I-84 Sandy Bridge to the groundbreaking ceremony. Or, park at the end of NW 257th Way behind the Gorge Outlets. After the groundbreaking, walk north to the ribbon cutting. Please carpool if possible, parking is limited.

FIND US

-  **Ch'ak Ch'ak Trail Head – NE Harlow Road**
(Approximate Address: 1100 NE Harlow Road, Troutdale)
-  **Sandy Riverfront Park & Trail – NE 257th Way**
(Approximate Address: 410 NW 257th Way, Troutdale)

[CLICK TO RSVP!](#)

