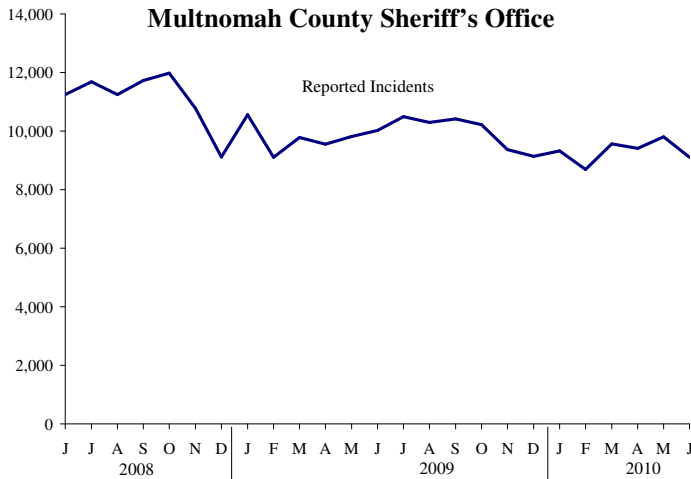


LPSCC PUBLIC SAFETY BRIEF: MAY/JUNE 2010

Reported Incidents

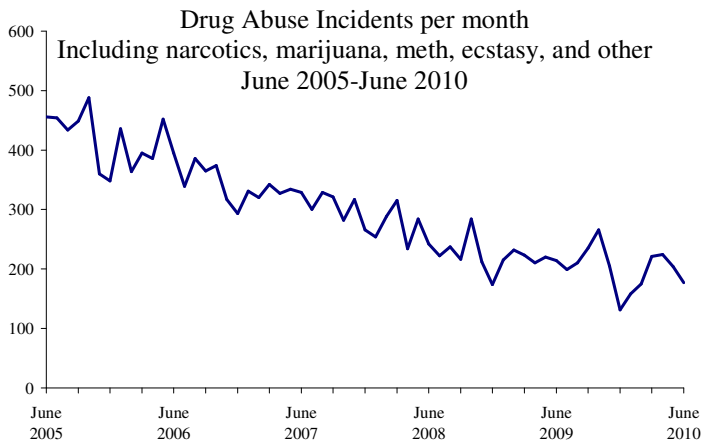
Portland Police Bureau & Multnomah County Sheriff's Office



Top 10 Incidents: June 2010

Larceny	1,722
Information	586
Traffic	481
Vandalism	409
Property	402
Burglary	383
Assault/Simple	360
Disorderly Conduct	355
Motor Vehicle Theft	348
Civil Hold-Detox	318

Monthly Spotlight



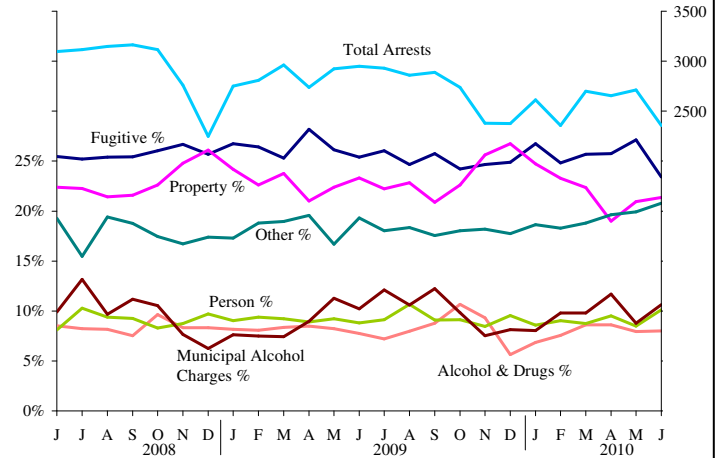
Drug Abuse incidents includes all reported violations of state and local laws related to the unlawful possession, sale, use, growing, manufacturing, and making of illegal drugs.

*Incident data from PPB only

Arrests

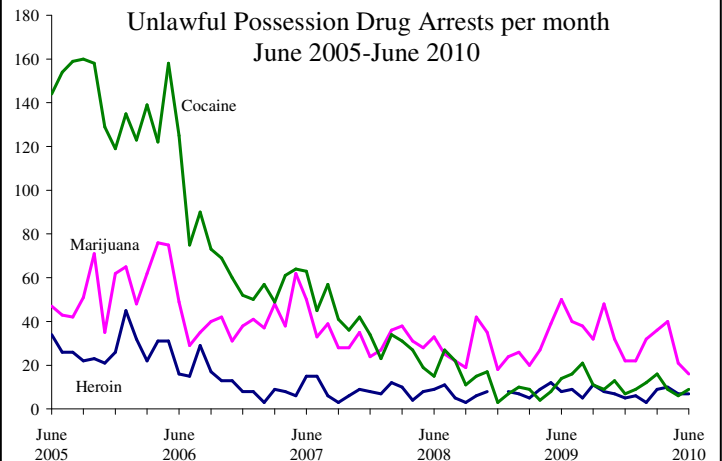
Portland Police Bureau & Multnomah County Sheriff's Office

Type based on primary charge. Other category includes local, vehicle, and behavioral charges.



*Arrest Data is for PPB and MCSO only

Monthly Spotlight

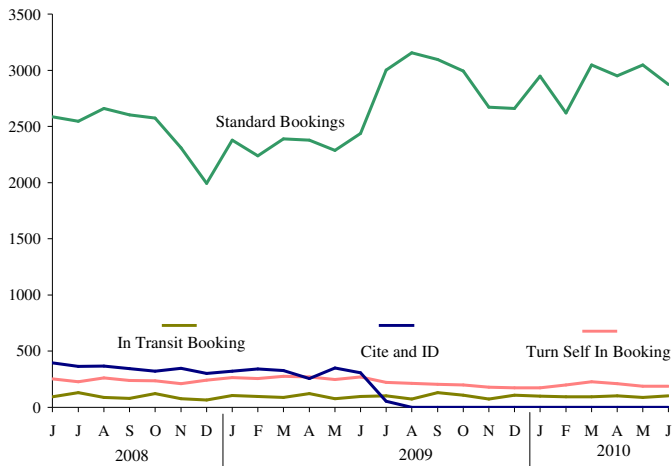


Note: This report is produced by staff to Multnomah County's Local Public Safety Coordinating Council (LPSCC). Feedback, suggestions, and questions can be directed to lpscc.staff@co.multnomah.or.us.

Unless otherwise noted, the data in this document was collected from DSS-Justice, Multnomah County's public safety data warehouse.

LPSCC PUBLIC SAFETY BRIEF: MAY/JUNE 2010

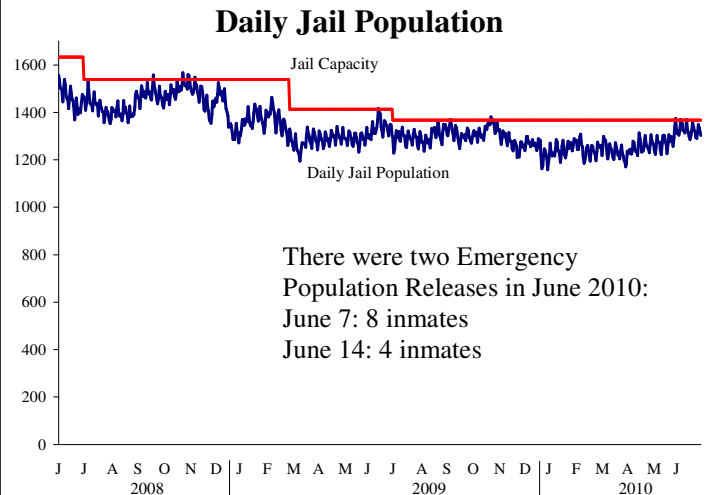
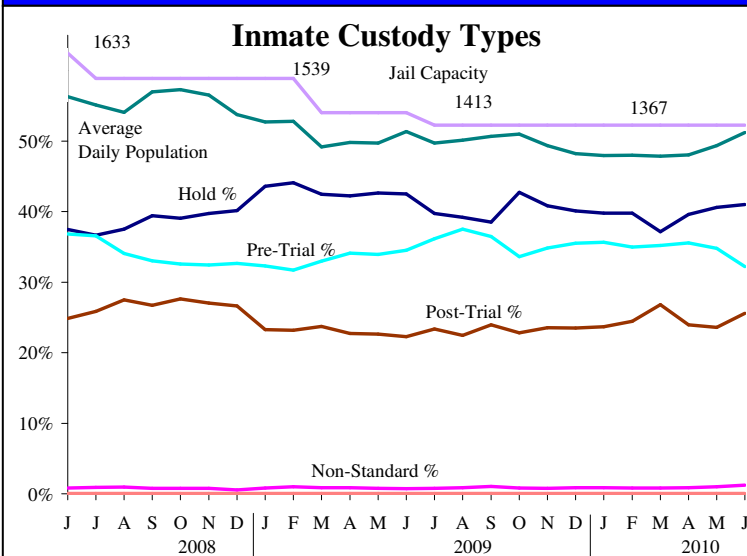
Multnomah County Jail: Booking



	May 2010	June 2010
Standard Booking	3047	2873
In-Transit Booking	89	103
Turn Self In Booking	188	188

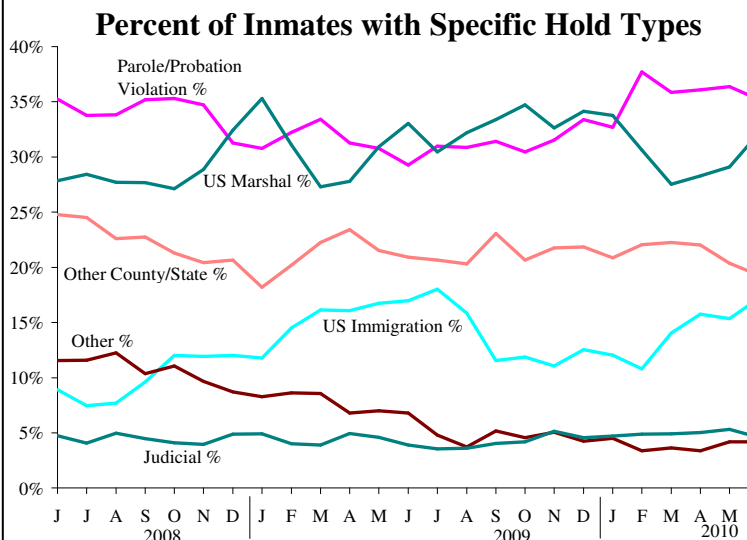
MCSO policy changes in July 2009 of ended the practice of **Cite and ID** booking and expanded the booking criteria to all persons arrested for a felony or misdemeanor crime. **In Transit** bookings refer to inmates who are temporarily housed at a M.C. facility on their way to another jurisdiction. **Turn Self In** bookings include persons who bring themselves into custody and is the coding used for the TSI weekender program in which inmates serve out their sentences on the weekends.

Multnomah County Sheriff's Office Jail Population



June 2010 Average Daily Jail Population

All inmates		1340
Pre-Trial	32%	432
Post-Trial	26%	342
Non-Standard	1%	16
Holds	41%	549

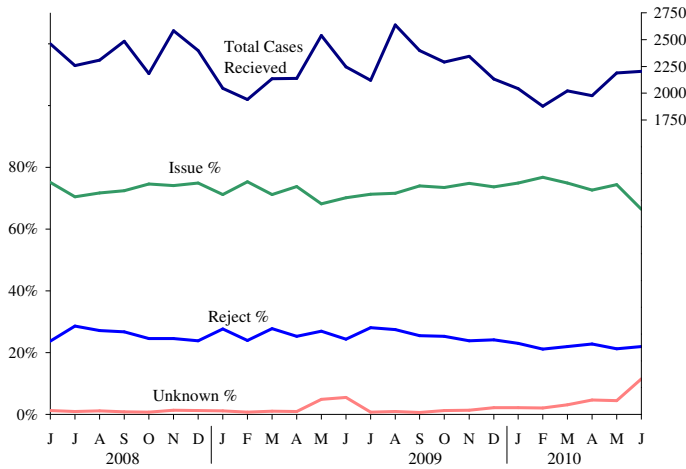


Notes: Inmates can have zero, one, or two holds. The percent total for "Percent of Inmates with Specific Hold Types" chart is greater than 100% because some inmates have two holds. The chart shows only the holds for inmates listed with custody type Hold. Inmates with custody type Pre-Trial, Post-Trial or Non Standard may have holds listed, but they are excluded from the chart. The number of US Marshal holds differs from the count reported to the federal government for the purposes of reimbursement.

LPSCC PUBLIC SAFETY BRIEF: MAY/JUNE 2010

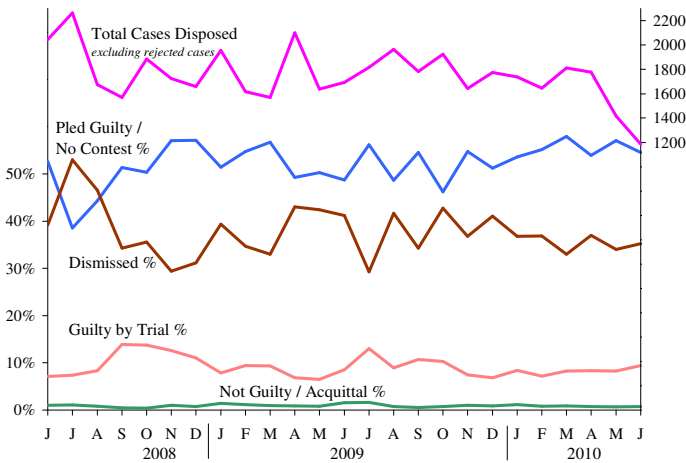
Charging and Disposition of Cases

Multnomah County DA's Office Charging Decisions for All Cases Received



The most recent months show an increase in Unknown cases because these cases are pending review by the DA's office.

Case Conclusions, Excluding Rejection

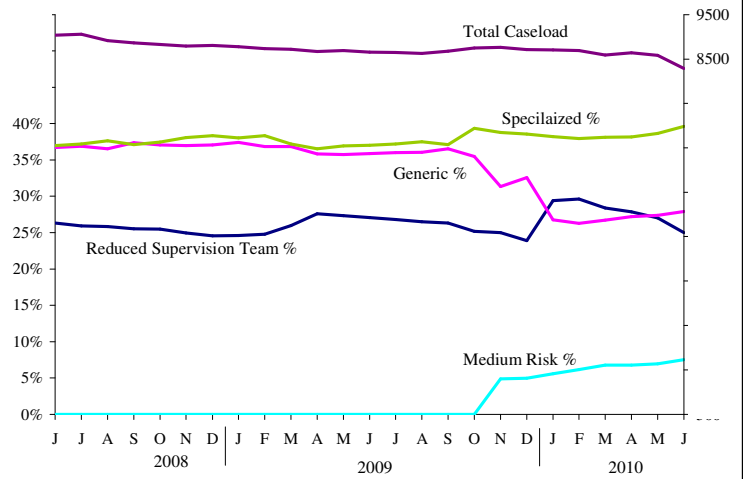


Data for the most recent months shows a decrease in the total cases disposed because some cases still remain open, awaiting action by the courts, the police, or the DA's office.

In June 2010, there were 565 cases disposed by rejection that were never prosecuted. They are not included in this chart.

The Dismissed category includes cases where the defendant has successfully completed a diversion program, such as DUII diversion or domestic violence diversion.

Adult Community Supervision Caseloads



The **Specialized Caseloads** focus on specific populations of high-risk offenders, such as domestic violence and sex offenders.

The **Generic Caseload** consists of high-risk high-need clients who are not part of a specialized caseload.

The **Reduced Supervision Caseload** focuses on the lowest-risk offenders and involves minimal contact between PO and client.

The **Medium Risk Caseload**, created in November 2009, is for medium-risk clients who receive fewer client visits and less treatment and DCJ services than generic caseload clients.

Specialized Caseload Snapshot June 2010

All Specialized Caseloads		3283
Sex Offender	29%	940
Domestic Violence	27%	890
High Risk Drug Unit	16%	513
Gang	8%	263
Mental Health	6%	212
Gender Specific	6%	192
African American Program	3%	110
Specialized Supervision Team	3%	99
DUII	2%	64

*Data for Adult Community Supervision Caseloads are provided by the DCJ