



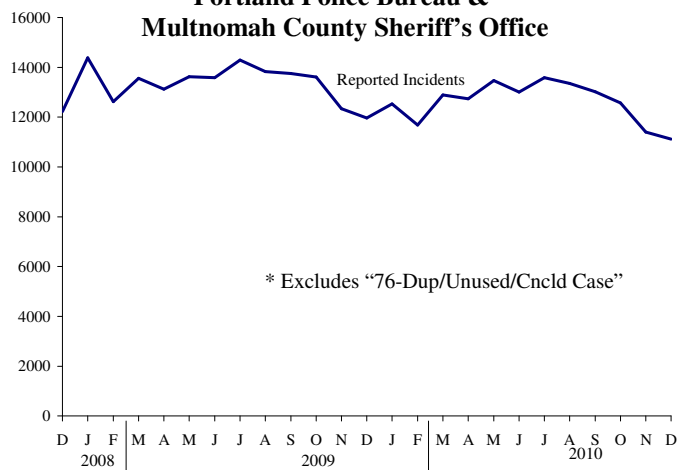
# LPSCC PUBLIC SAFETY BRIEF

## NOV/DEC 2010



### Reported Incidents

#### Portland Police Bureau & Multnomah County Sheriff's Office



#### Top 10 Offenses: Nov/Dec 2010

Larceny	1993
Assault/Simple	641
Vandalism	593
Disorderly Conduct	579
Traffic	574
DUII	546
Information	535
Property	456
Drug Abuse	399
Fugitive	385

#### Simple Assault Incidents by Premise: Nov/Dec 2010

During the months of November and December 2010, approximately 621 incidents of simple assault were reported at the following types of locations to the Portland Police and Multnomah County Sheriff's Office.

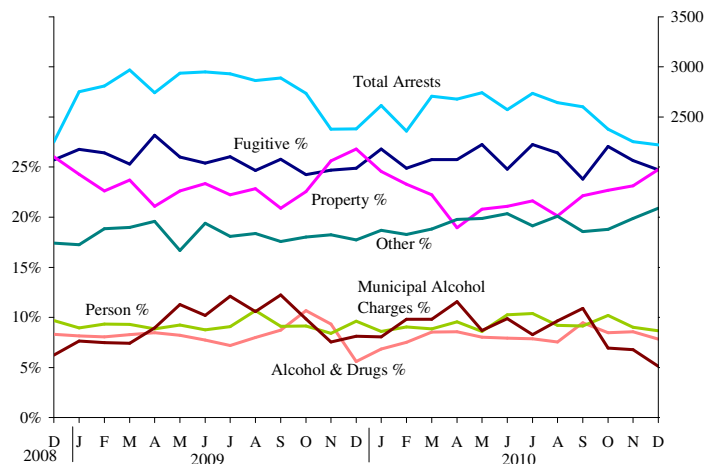
Single Family Resident	39.5%
Street/Alley/Sidewalk	14.8%
Nightclub/Tavern	3.7%
Parking lot/structure	3.4%
Hotel/Motel	1.8%
Airport/Depot	1.4%
Public School/College	1.1%
Unspecified Business	1.1%
Hospital	0.6%
Restaurant	0.6%
Other	4.4%
Not Entered	27.5%

"Other" includes apartments/multiplexes, churches, convenience stores, department stores, government offices, drug stores, public safety facilities, gas stations, garages, water/shoreline, forests, and more.

### Arrests

#### Portland Police Bureau & Multnomah County Sheriff's Office

Type based on primary charge. Other category includes local, vehicle, and behavioral charges. PPB and MCSO data only.



#### Frequent Fliers: Nov/Dec 2010

During the months of November and December 2010, the Portland Police and the Multnomah County Sheriff's Office made about 4710 arrests. Only 3923 *people* were arrested, however, because some people were arrested multiple times in the two month period. The chart below shows the distribution of these "frequent fliers."

Number of Arrests	Number of People	Percent
1	3421	87.2%
2	345	8.8%
3	85	2.2%
4	40	1.0%
5	15	0.4%
6	7	0.2%
7	6	0.2%
8	2	0.1%
9	1	0.0%
10	0	0.0%
11	1	0.0%
total	3923	100%

**Note:** This report is produced by staff to Multnomah County's Local Public Safety Coordinating Council (LPSCC). Feedback, suggestions, and questions can be directed to [Thomas.Bode@multco.us](mailto:Thomas.Bode@multco.us).

Unless otherwise noted, the data in this document was collected from DSS-Justice, Multnomah County's public safety data warehouse.

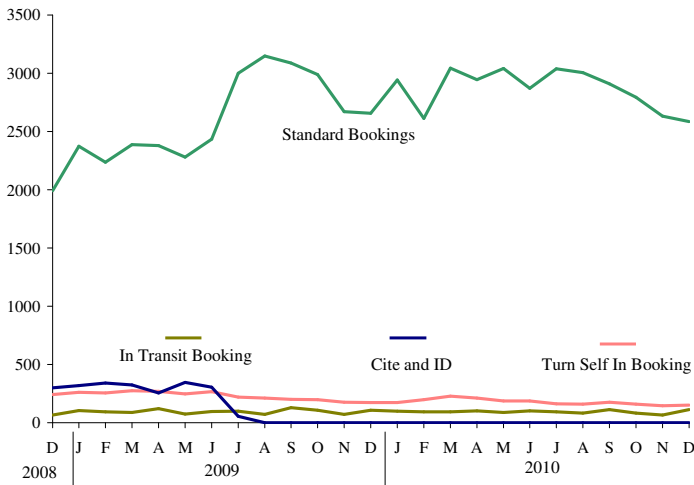


# LPSCC PUBLIC SAFETY BRIEF

## NOV/DEC 2010



### Multnomah County Jail: Booking

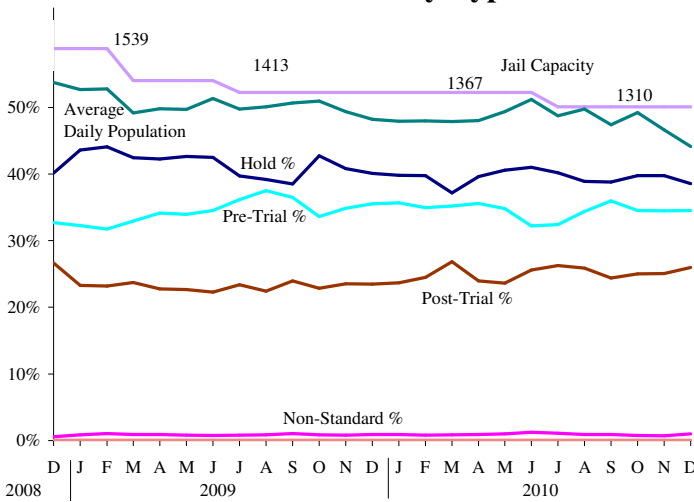


	Nov. 2010	Dec. 2010
Standard Booking	2632	2586
In-Transit Booking	67	112
Turn Self In Booking	146	153

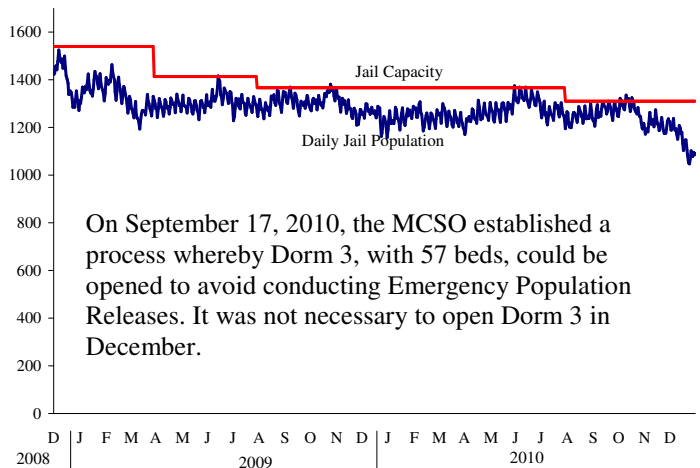
MCSO policy changes in July 2009 ended the practice of **Cite and ID** booking and expanded the booking criteria to all persons arrested for a felony or misdemeanor crime. **In Transit** bookings refer to inmates who are temporarily housed at a M.C. facility on their way to another jurisdiction. **Turn Self In** bookings occur when an offender has been sentenced and ordered to return to jail at a later date, and is the coding used for the TSI weekender program in which inmates serve out their sentences on the weekends.

### Multnomah County Sheriff's Office Jail Population

#### Inmate Custody Types



#### Daily Jail Population



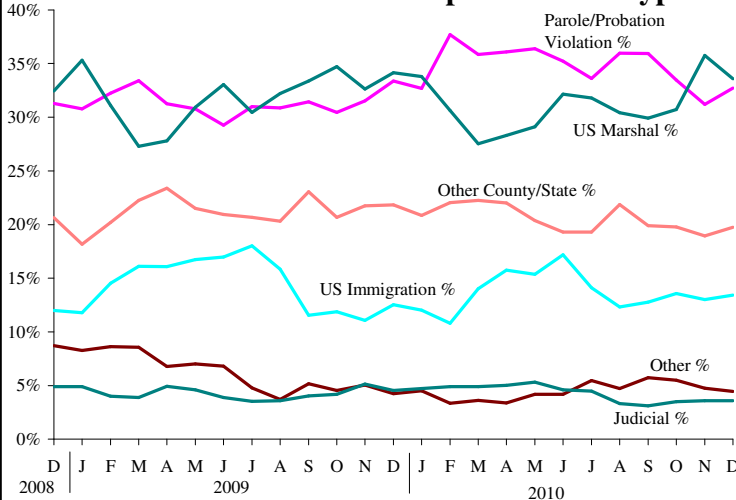
On September 17, 2010, the MCSO established a process whereby Dorm 3, with 57 beds, could be opened to avoid conducting Emergency Population Releases. It was not necessary to open Dorm 3 in December.

#### December 2010 Average Daily Jail Population

<b>All inmates</b>		1154
Pre-Trial	35%	399
Post-Trial	26%	299
Non-Standard	1%	11
Holds	39%	445

Notes: Inmates can have zero, one, or two holds. The percent total for "Percent of Inmates with Specific Hold Types" chart is greater than 100% because some inmates have two holds. The chart shows only the holds for inmates listed with custody type Hold. Inmates with custody type Pre-Trial, Post-Trial or Non Standard may have holds listed, but they are excluded from the chart. The number of US Marshal holds differs from the count reported to the federal government for the purposes of reimbursement.

#### Percent of Inmates with Specific Hold Types





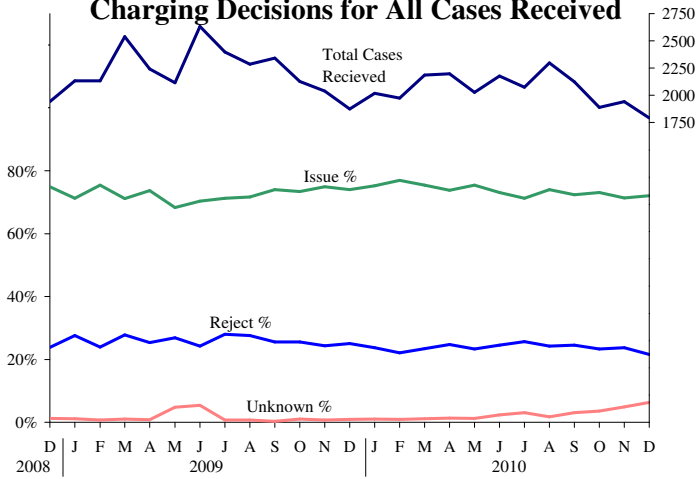
# LPSCC PUBLIC SAFETY BRIEF

## NOV/DEC 2010



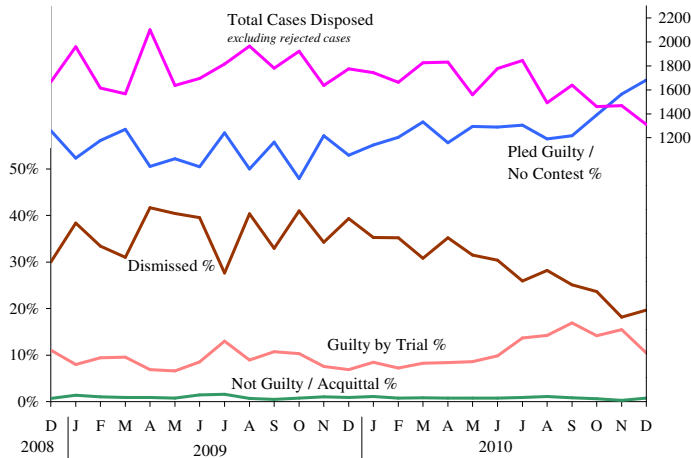
### Charging and Disposition of Cases

#### Multnomah County DA's Office Charging Decisions for All Cases Received



The most recent months show an increase in Unknown cases because these cases are pending review by the DA's office.

#### Case Conclusions, Excluding Rejection

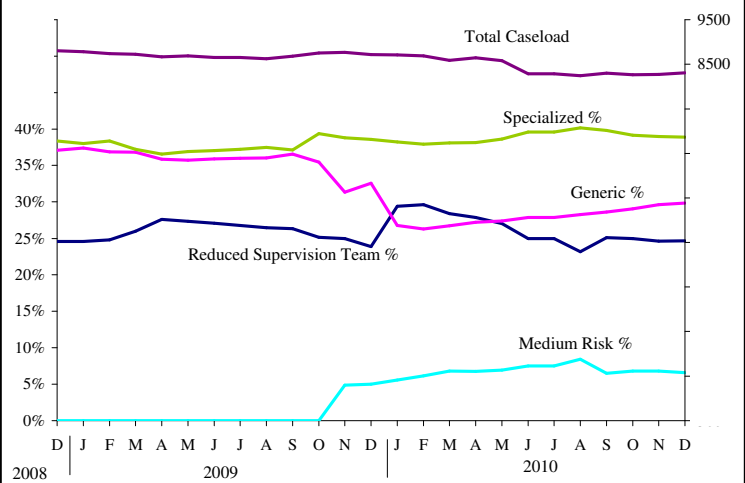


Data for the most recent months shows a decrease in the total cases disposed because some cases still remain open, awaiting action by the courts, the police, or the DA's office.

In December 2010, there were 387 cases disposed by rejection that were never prosecuted. They are not included in this chart.

The Dismissed category includes cases where the defendant has successfully completed a diversion program, such as DUII diversion or domestic violence diversion.

### Adult Community Supervision Caseloads



The **Specialized Caseloads** focus on specific populations of high-risk offenders, such as domestic violence and sex offenders.

The **Generic Caseload** consists of high-risk high-need clients who are not part of a specialized caseload.

The **Reduced Supervision Caseload** focuses on the lowest-risk offenders and involves minimal contact between PO and client.

The **Medium Risk Caseload**, created in November 2009, is for medium-risk clients who receive fewer client visits and less treatment and DCJ services than generic caseload clients.

#### Specialized Caseload Snapshot December 2010

All Specialized Caseloads		3232
Sex Offender	29%	941
Domestic Violence	28%	902
High Risk Drug Unit	15%	479
Gang	8%	270
Mental Health	6%	195
Gender Specific	6%	180
Specialized Supervision Team	3%	106
African American Program	3%	102
DUII	2%	57

\*Data for Adult Community Supervision Caseloads are provided by the DCJ