



LPSCC PUBLIC SAFETY BRIEF

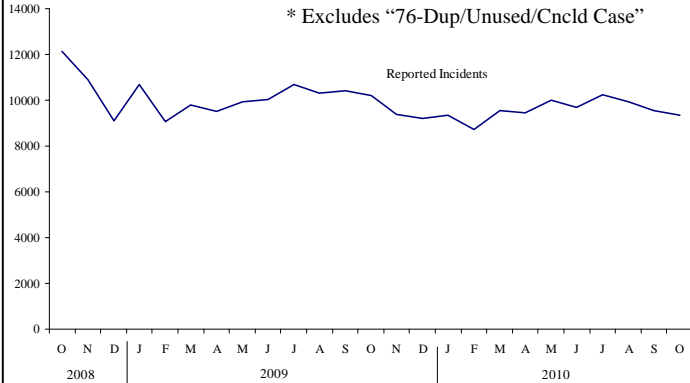
SEPT/OCT 2010



Reported Incidents

Portland Police Bureau & Multnomah County Sheriff's Office

* Excludes "76-Dup/Unused/Cncl'd Case"

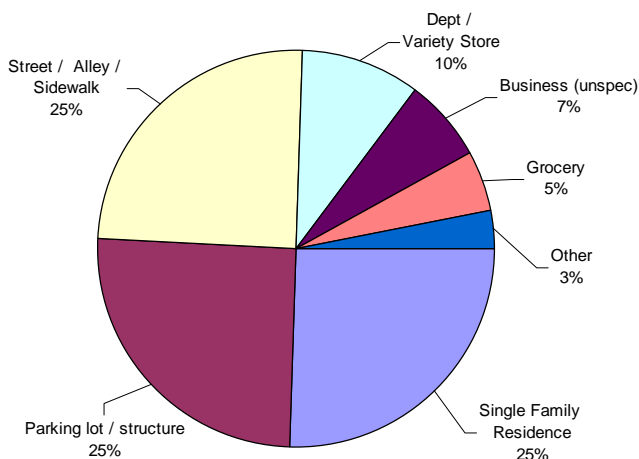


Top 10 Offenses: Sept/Oct 2010

Larceny (theft)	4457
Assault/Simple	1388
Disorderly Conduct	1207
Vandalism	1172
Traffic	1134
Property	1118
Information	1027
Drug Abuse	889
DUII	840
Fugitive	780

Larceny Incidents by Premise: Sept/Oct 2010

During the months of September and October 2010, approximately 3100 incidents of larceny were reported at the following types of locations to the Portland Police and Multnomah County Sheriff's Office; about 20 percent of incidents were not associated with a premise type and are excluded from this chart

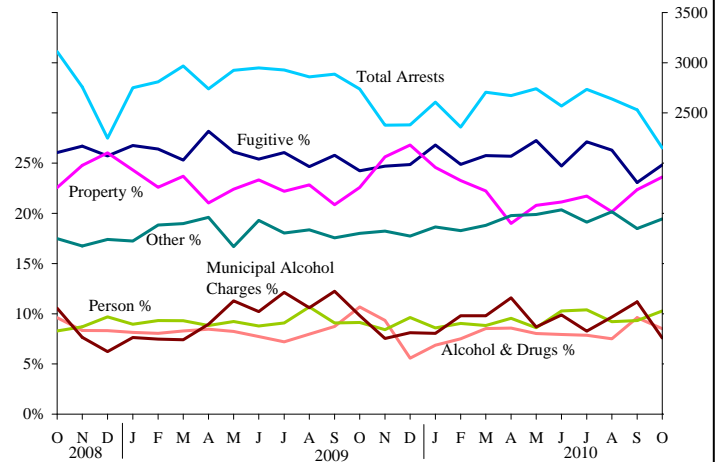


"Other" includes public schools; colleges; pharmacies / drug stores; night clubs / bars; hotels / motels; restaurants; parks / campgrounds; airports; depots; forests, mountains, autos, trucks and motor-homes; medical / dental facilities; churches; hospitals; and more

Arrests

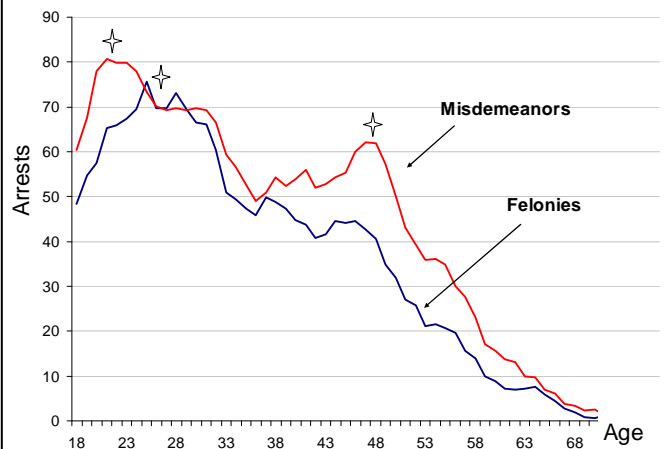
Portland Police Bureau & Multnomah County Sheriff's Office

Type based on primary charge. Other category includes local, vehicle, and behavioral charges. PPB and MCSO data only.



Age at Arrest: Sept / Oct 2010

In September and October 2010, the Portland Police and Multnomah County Sheriff's Office made about 5200 arrests. The majority of felony arrests were for individuals in their mid-twenties, with a distinct peak spanning from ages 23-27. Misdemeanor arrests appear concentrated around two age groups: individuals in their early twenties (21-23) and individuals in their mid-late 40's (45-50).



Data represents a five-year moving average centered on age reported (e.g., the value for age 25 represents the average of values for ages 23-27); arrests involving individuals under age 16 were excluded from this analysis.

Note: This report is produced by staff to Multnomah County's Local Public Safety Coordinating Council (LPSCC). Feedback, suggestions, and questions can be directed to Thomas.Bode@multco.us.

Unless otherwise noted, the data in this document was collected from DSS-Justice, Multnomah County's public safety data warehouse.

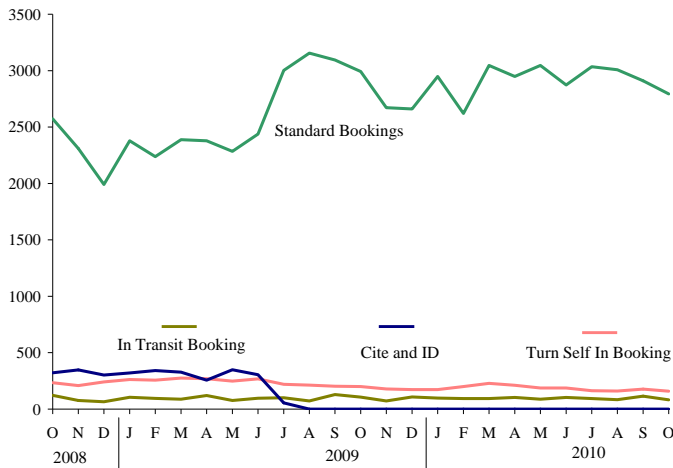


LPSCC PUBLIC SAFETY BRIEF

SEPT/OCT 2010



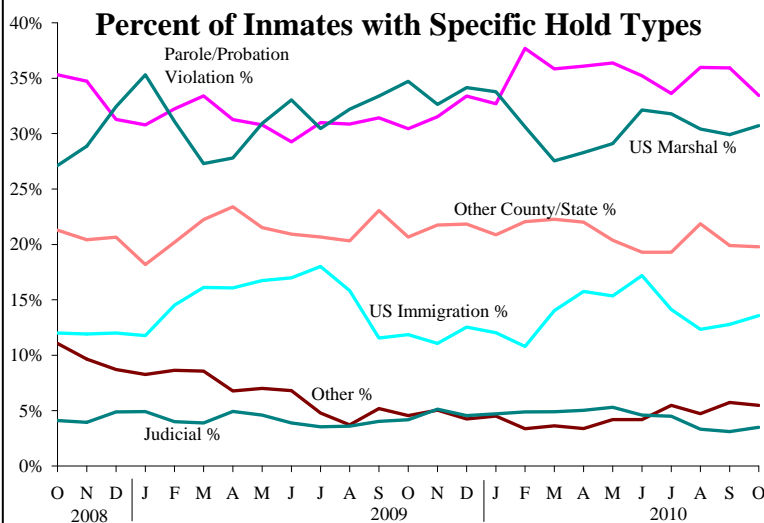
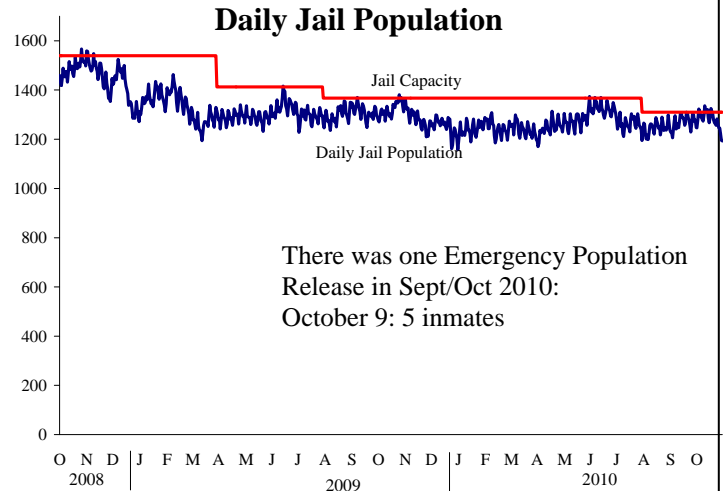
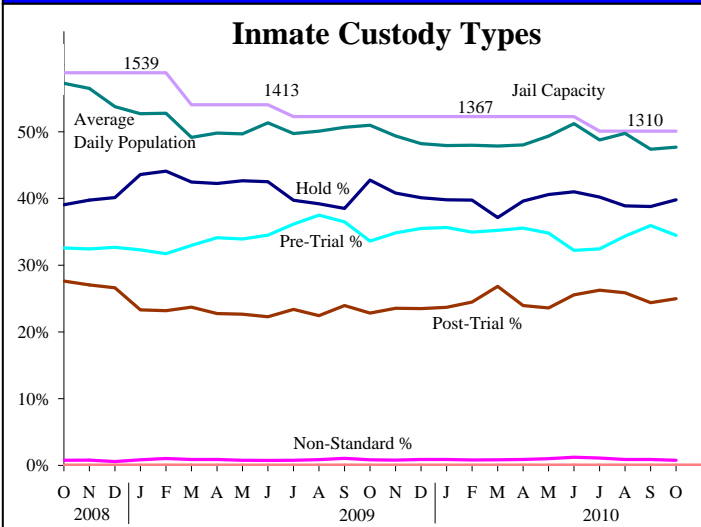
Multnomah County Jail: Booking



	Sept. 2010	Oct. 2010
Standard Booking	2909	2794
In-Transit Booking	115	83
Turn Self In Booking	178	160

MCSO policy changes in July 2009 ended the practice of **Cite and ID** booking and expanded the booking criteria to all persons arrested for a felony or misdemeanor crime. **In Transit** bookings refer to inmates who are temporarily housed at a M.C. facility on their way to another jurisdiction. **Turn Self In** bookings occur when an offender has been sentenced and ordered to return to jail at a later date, and is the coding used for the TSI weekender program in which inmates serve out their sentences on the weekends.

Multnomah County Sheriff's Office Jail Population



October 2010 Average Daily Jail Population

All inmates		1248
Pre-Trial	34%	430
Post-Trial	25%	312
Non-Standard	1%	10
Hold	40%	497

Notes: Inmates can have zero, one, or two holds. The percent total for "Percent of Inmates with Specific Hold Types" chart is greater than 100% because some inmates have two holds. The chart shows only the holds for inmates listed with custody type Hold. Inmates with custody type Pre-Trial, Post-Trial or Non Standard may have holds listed, but they are excluded from the chart. The number of US Marshal holds differs from the count reported to the federal government for the purposes of reimbursement.



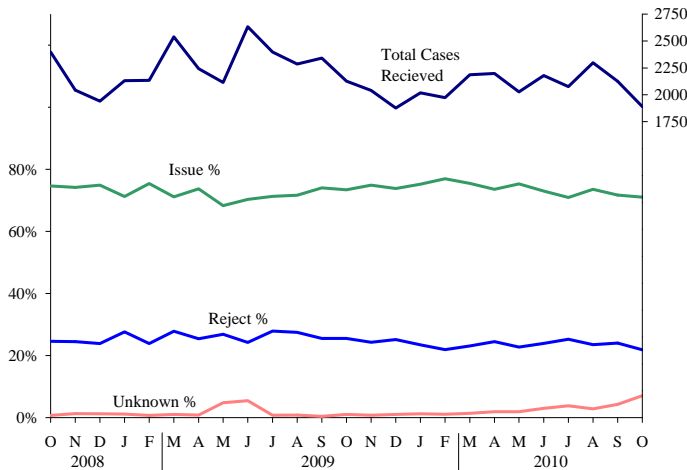
LPSCC PUBLIC SAFETY BRIEF

SEPT/OCT 2010



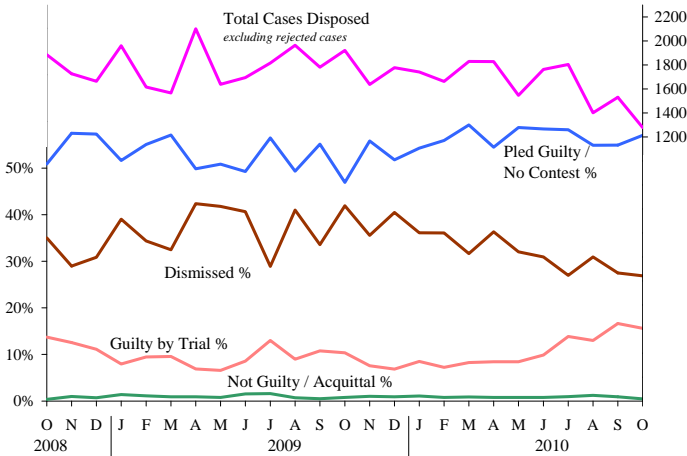
Charging and Disposition of Cases

Multnomah County DA's Office Charging Decisions for All Cases Received



The most recent months show an increase in Unknown cases because these cases are pending review by the DA's office.

Case Conclusions, Excluding Rejection

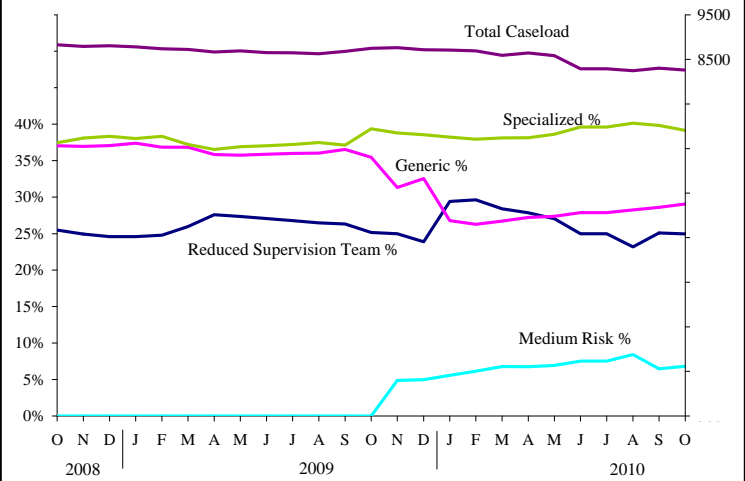


Data for the most recent months shows a decrease in the total cases disposed because some cases still remain open, awaiting action by the courts, the police, or the DA's office.

In October 2010, there were 485 cases disposed by rejection that were never prosecuted. They are not included in this chart.

The Dismissed category includes cases where the defendant has successfully completed a diversion program, such as DUII diversion or domestic violence diversion.

Adult Community Supervision Caseloads



The **Specialized Caseloads** focus on specific populations of high-risk offenders, such as domestic violence and sex offenders.

The **Generic Caseload** consists of high-risk high-need clients who are not part of a specialized caseload.

The **Reduced Supervision Caseload** focuses on the lowest-risk offenders and involves minimal contact between PO and client.

The **Medium Risk Caseload**, created in November 2009, is for medium-risk clients who receive fewer client visits and less treatment and DCJ services than generic caseload clients.

Specialized Caseload Snapshot October 2010

All Specialized Caseloads		3236
Sex Offender	29%	943
Domestic Violence	28%	909
High Risk Drug Unit	15%	477
Gang	8%	267
Mental Health	6%	198
Gender Specific	6%	179
African American Program	3%	106
Specialized Supervision Team	3%	103
DUII	2%	54

*Data for Adult Community Supervision Caseloads are provided by the DCJ