



# Local Public Safety Coordinating Council of Multnomah County

## Public Safety Trends Summary

The Public Safety Trends document provides an executive level summary of operational data for many of the decision points and agencies in Multnomah County's public safety system. The statistics in the Report are compiled from the Decision Support System – Justice (DSSJ) data warehouse.

**April 2014**

Dear Reader,

Welcome to the Public Safety Trends Summary Report produced by Multnomah County's Local Public Safety Coordinating Council (LPSCC). The purpose of this report is to provide an executive level summary of operational data for many of the decision points in the County's Public Safety System for the Council's Executive Committee, partner agency staff, and members of the public.

The statistics detailed in this report are sourced from the County's Decision Support System – Justice data warehouse (DSSJ). The data contained in DSSJ is sourced from the host agency systems and is regularly audited for accuracy. Additionally, the data presented in this report is regularly reviewed by the owner agency analysts for consistency and clarity.

The Report provides both long-term trend data and short-term descriptive statistics. The long-term trends section provides a description of how certain types of events, case types, and charge levels have changed over time. The short-term trends section provides a more detailed description of the data presented in the long-term trend section. Measures of reported Incidents, Arrest, Disposition, and Sentencing are reported at the case unit level. Measures for Booking and Custody are reported at the person level.

The Public Safety Trends Report is produced on a regular basis and serves as a starting point for broader investigations of trends in local public safety. Frequently, the Report will contain a special analysis section providing a systems perspective of specific areas in the local public safety system.

Lauren Brown  
LPSCC Analyst

## Items of Note and Updates

Reported Part 1 crime in 2014 is up slightly when compared to January through April of 2013. There are increases in most types of Part 1 property crime, with sharp increases in non-residential burglaries and theft from autos.

There were increases in bookings for property crimes, while bookings for person crimes decreased. The same fluctuations were not present in the arrest data for person and property crimes.

The Multnomah County Circuit Court transitioned to a new data system in May 2014. A few regularly published charts created using Court data may be missing from the next edition of the report while this new data is integrated into DSSJ.

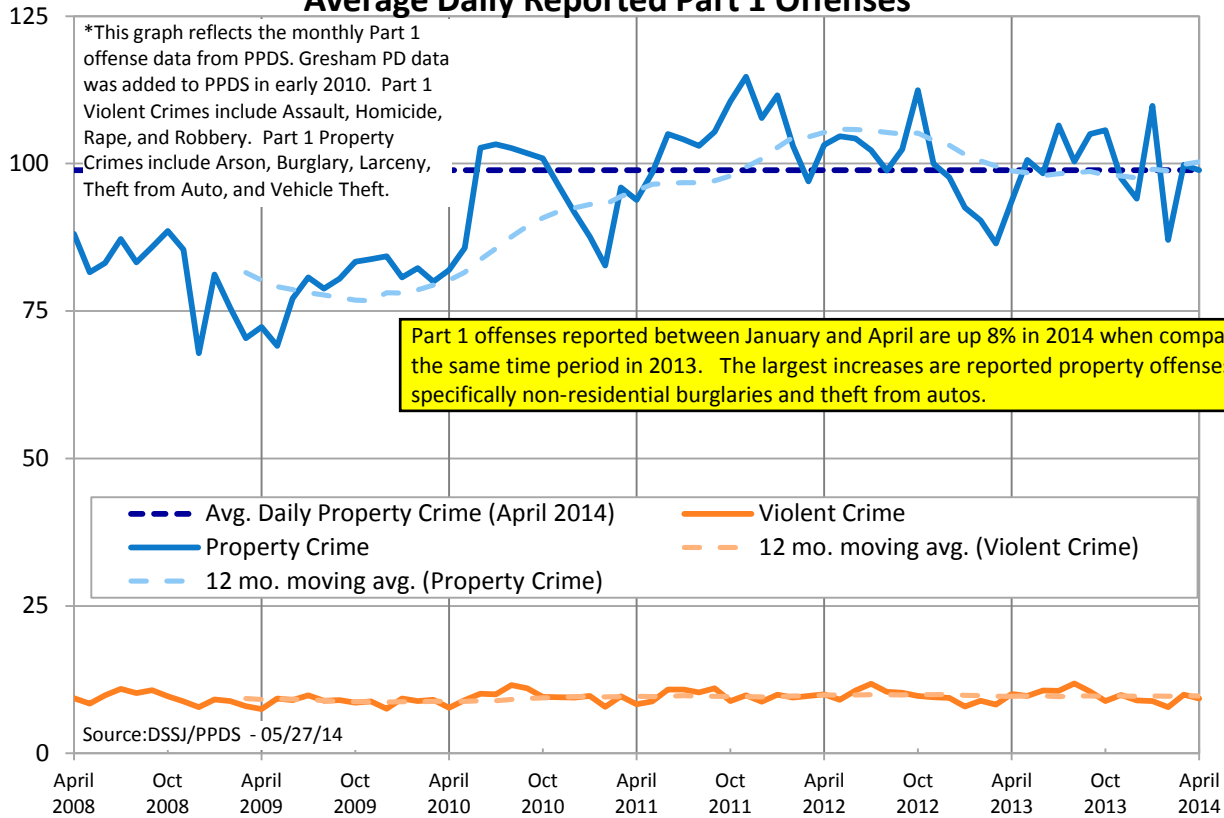
The May issue of the Public Safety Trends Report should feature new content highlighting trends in prosecution decision points.



Contact Lauren Brown with questions or concerns [lauren.brown@multco.us](mailto:lauren.brown@multco.us)  
Current and past editions of this report are available at [www.lpscc.org](http://www.lpscc.org)



### Average Daily Reported Part 1 Offenses\*



### Average Daily Part 1 Offenses for April 2014

Average daily reported Part 1 offenses in April 2014 = 108.2.

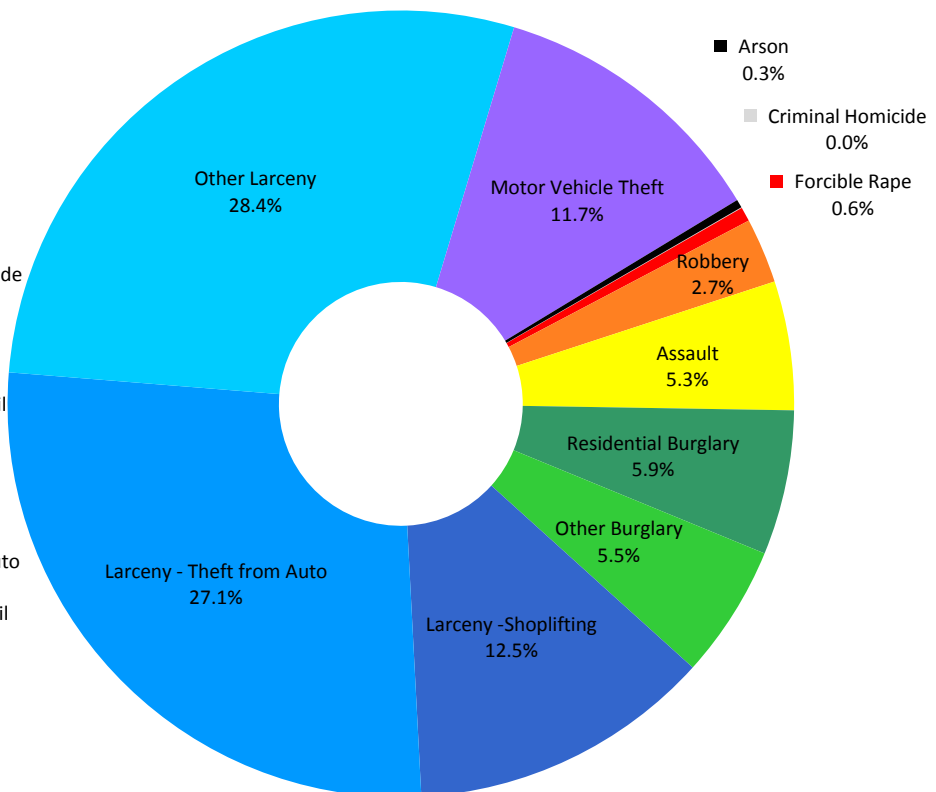
Reported Part 1 violent crime was 7.6% lower in April 2014 than April 2013.

There was one reported homicide in April 2014.

The majority (68%) of all reported Part 1 offenses in April were larcenies.

When compared to April 2013, there were approximately 2.8 more incidents of theft from auto and 1.5 more incidents of shoplifting reported during April 2014.

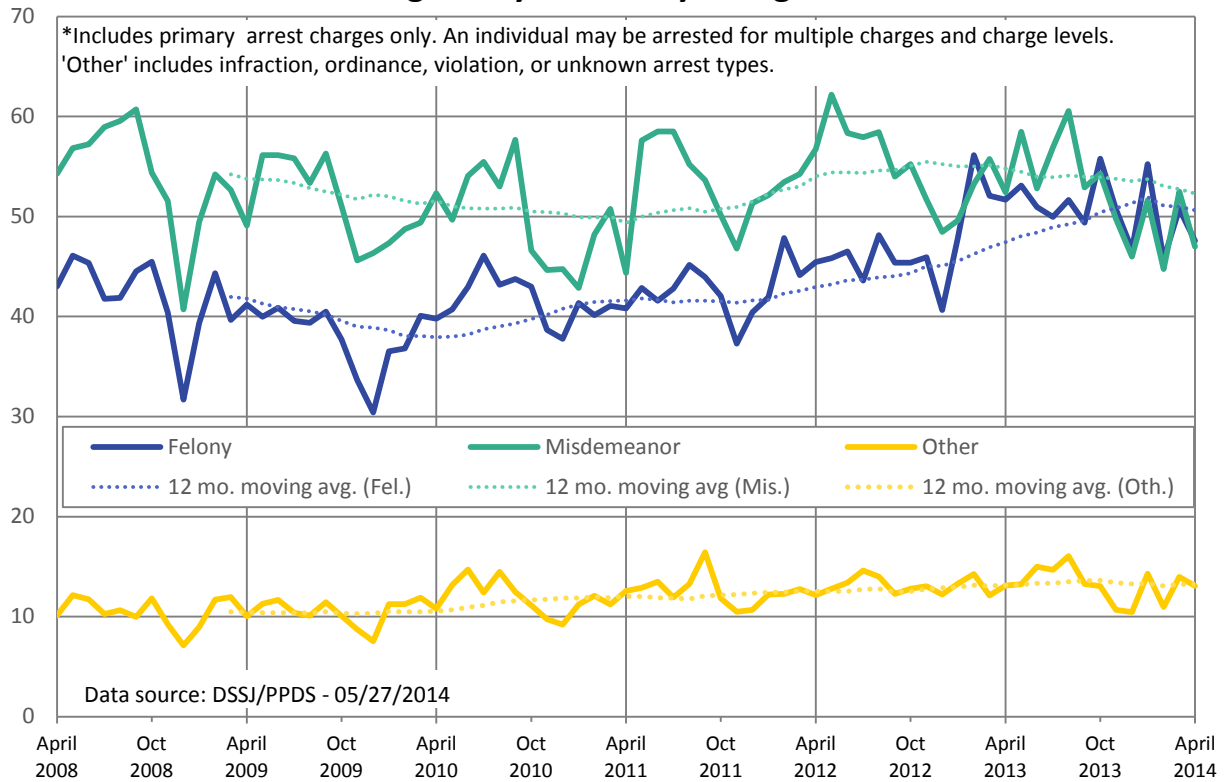
Source: DSSJ/PPDS 5/27/14



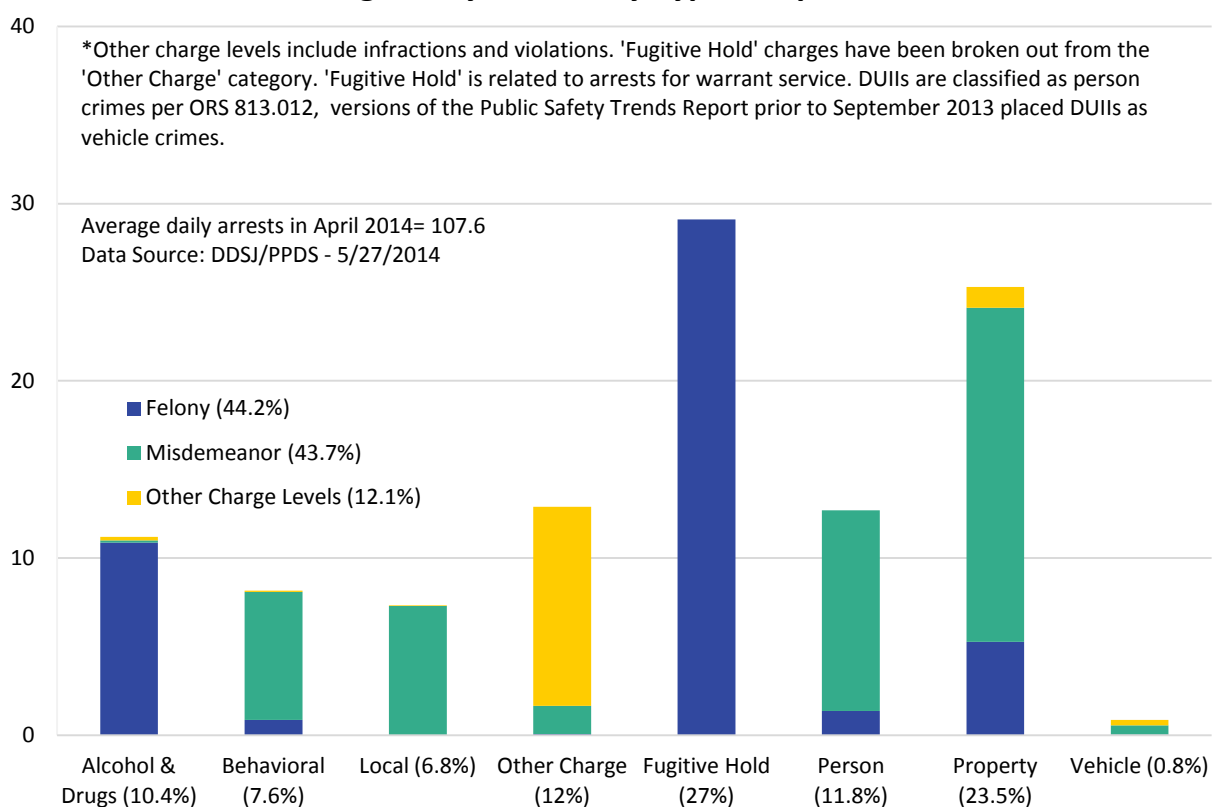
Contact Lauren Brown with questions or concerns [lauren.brown@multco.us](mailto:lauren.brown@multco.us)  
 Current and past editions of this report are available at [www.lpscc.org](http://www.lpscc.org)



### Average Daily Arrests by Charge Level\*



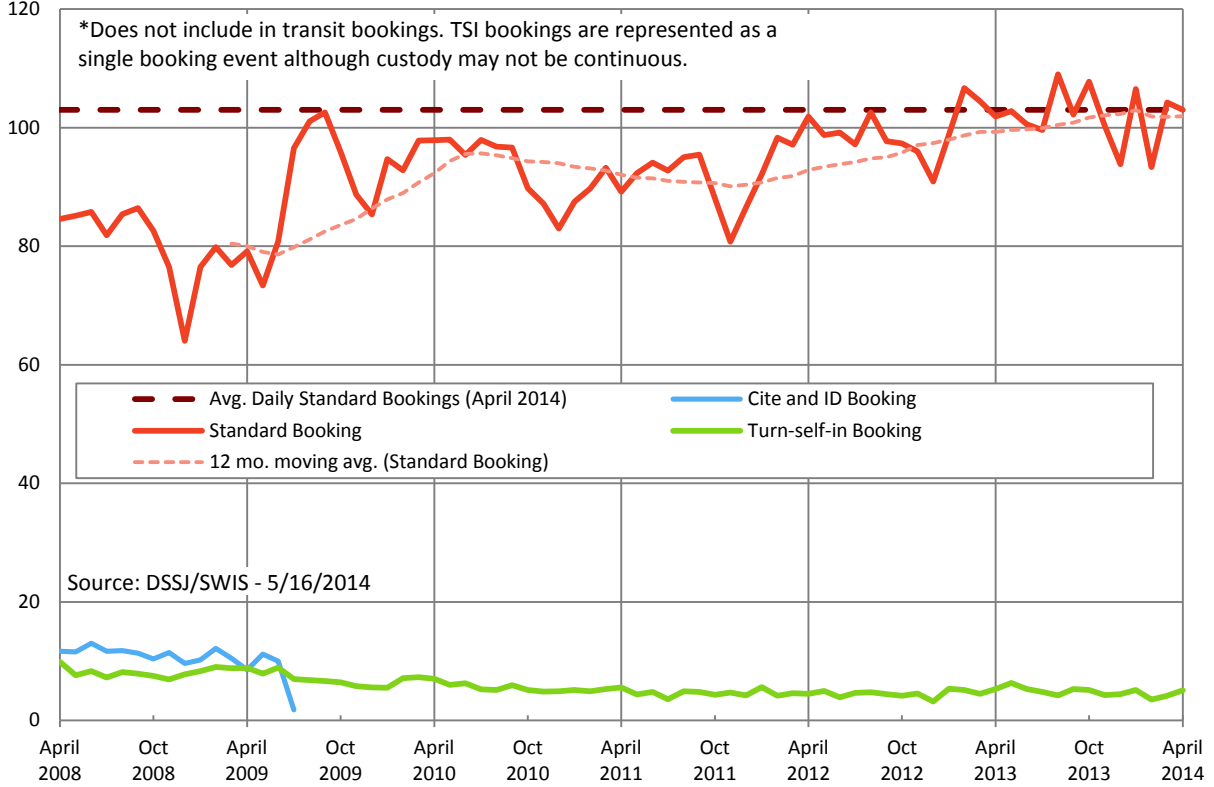
### Average Daily Arrests by Type in April 2014\*



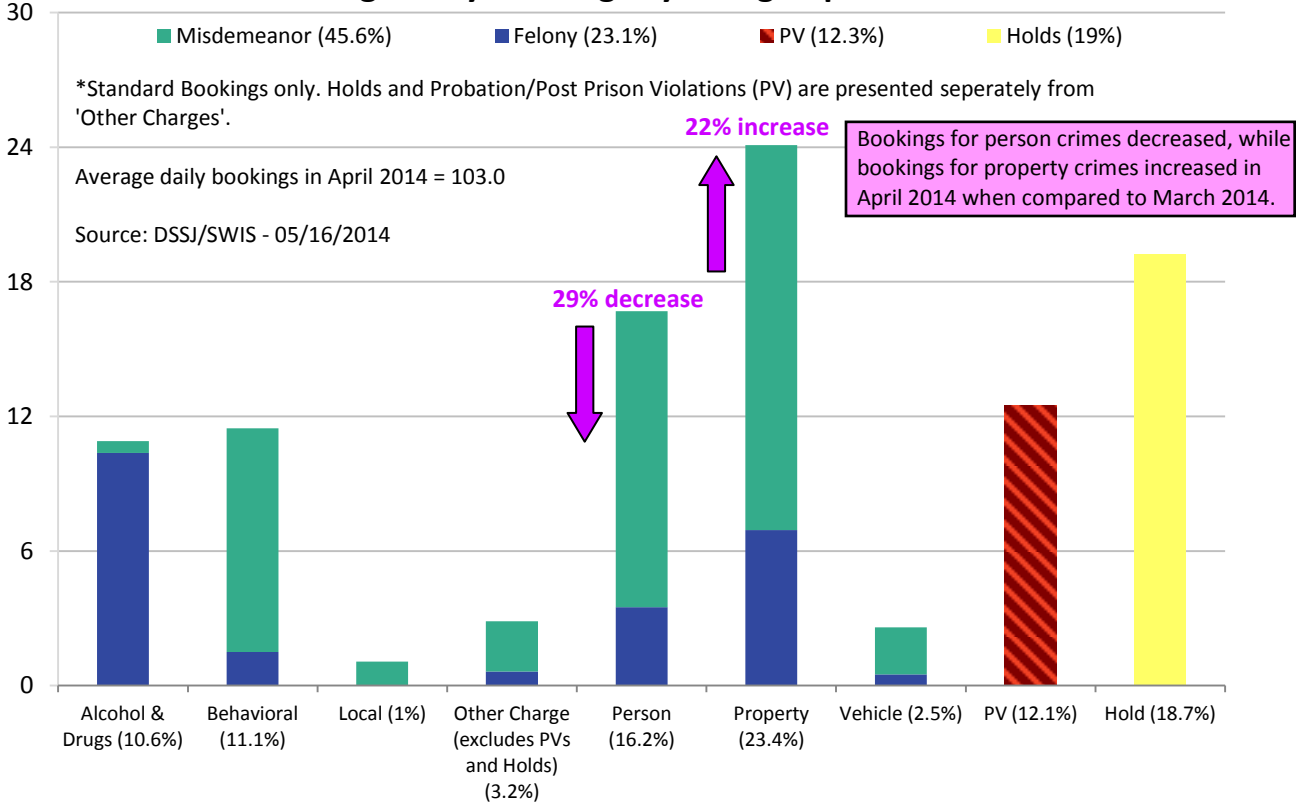
Contact Lauren Brown with questions or concerns [lauren.brown@multco.us](mailto:lauren.brown@multco.us)  
Current and past editions of this report are available at [www.lpscc.org](http://www.lpscc.org)



### Average Daily Bookings by Type\*



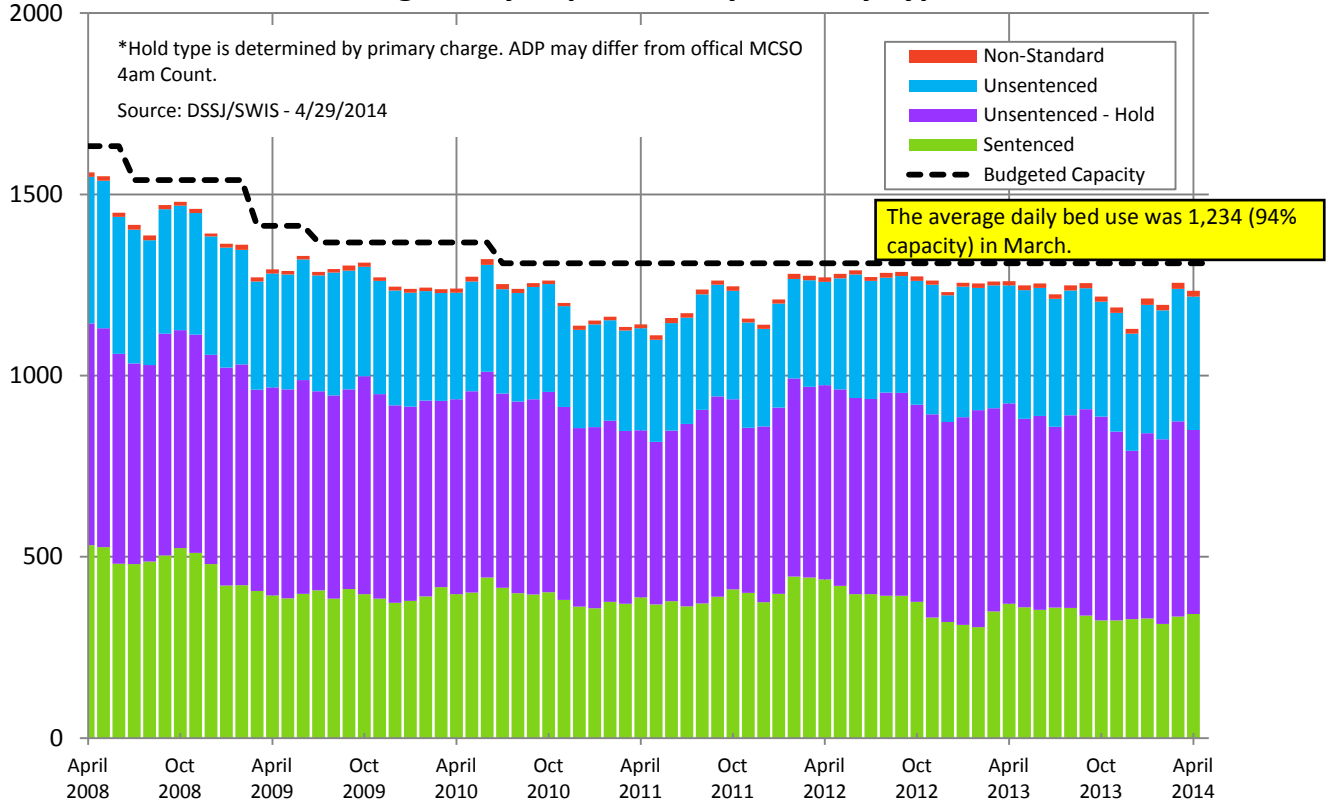
### Average Daily Bookings by Charge April 2014\*



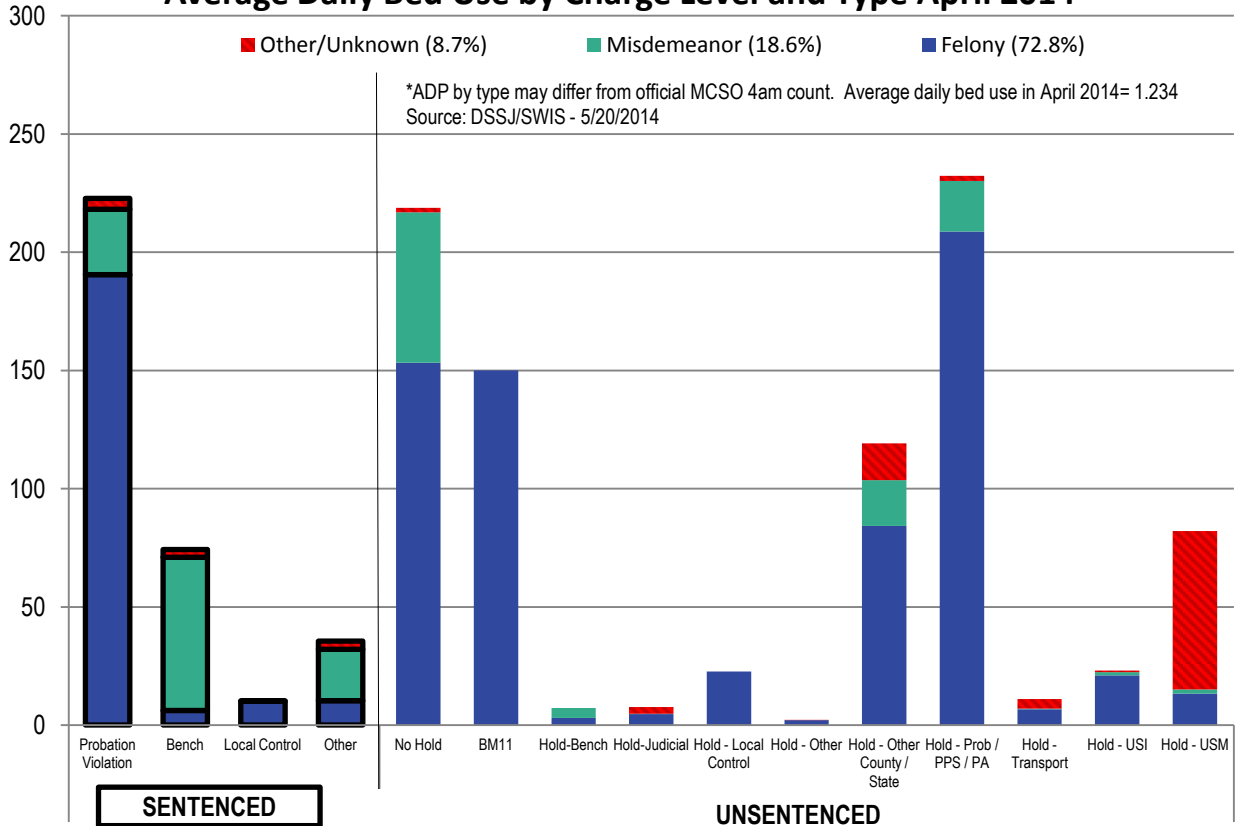
Contact Lauren Brown with questions or concerns [lauren.brown@multco.us](mailto:lauren.brown@multco.us)  
 Current and past editions of this report are available at [www.lpscc.org](http://www.lpscc.org)



### Average Daily Population by Custody Type\*



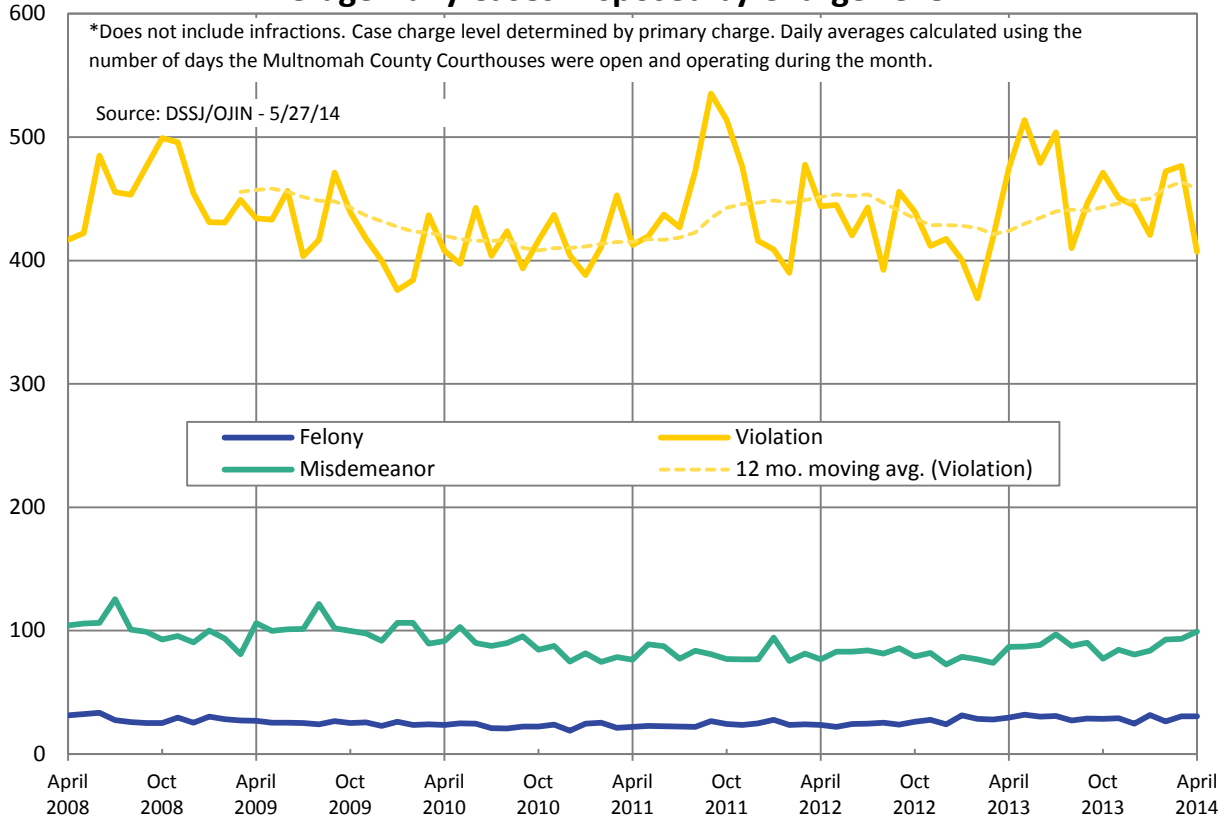
### Average Daily Bed Use by Charge Level and Type April 2014\*



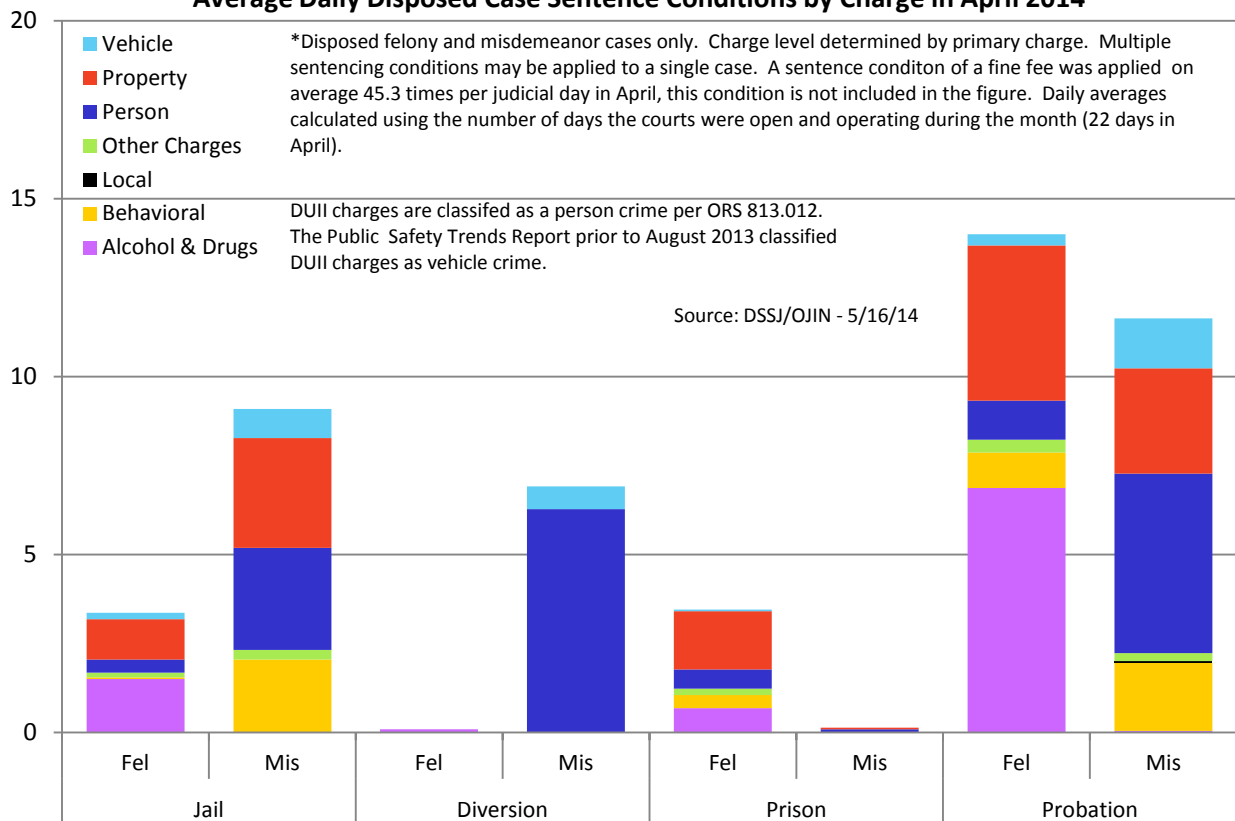
Contact Lauren Brown with questions or concerns [lauren.brown@multco.us](mailto:lauren.brown@multco.us)  
 Current and past editions of this report are available at [www.lpscc.org](http://www.lpscc.org)



### Average Daily Cases Disposed by Charge Level\*



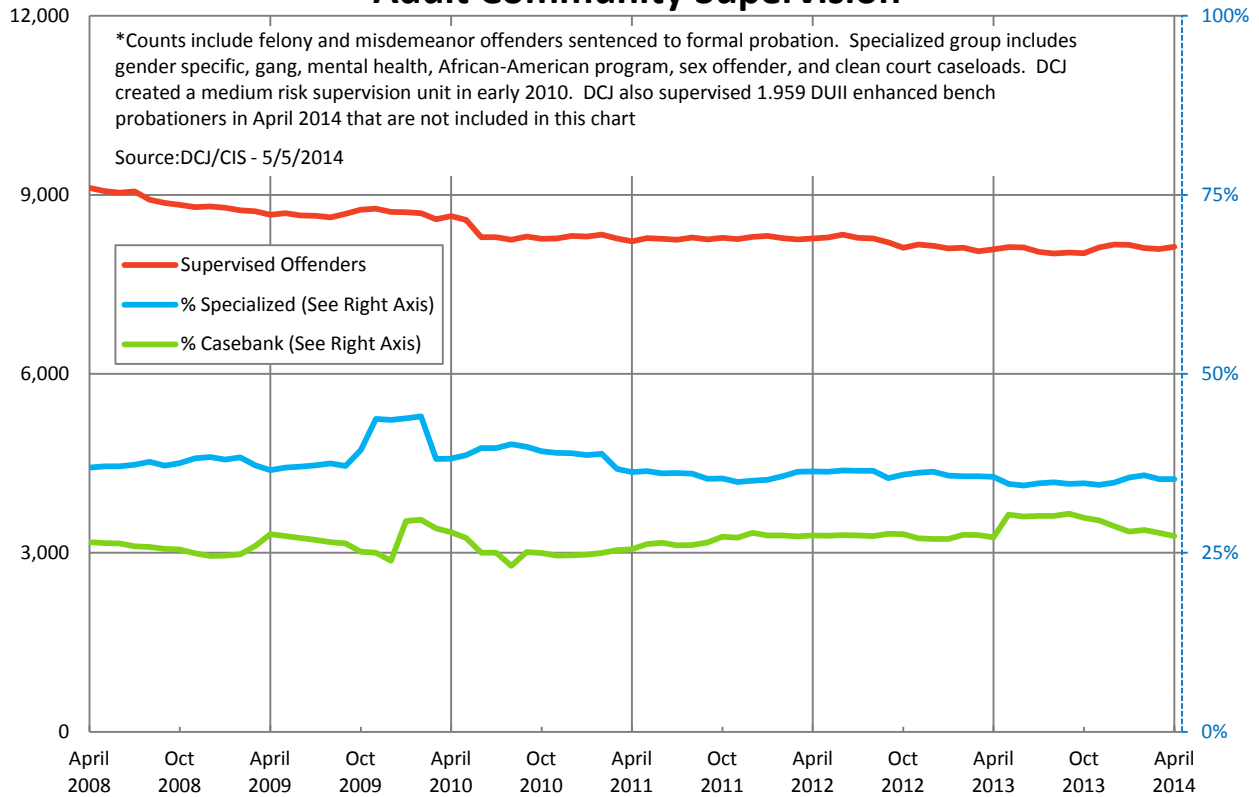
### Average Daily Disposed Case Sentence Conditions by Charge in April 2014\*



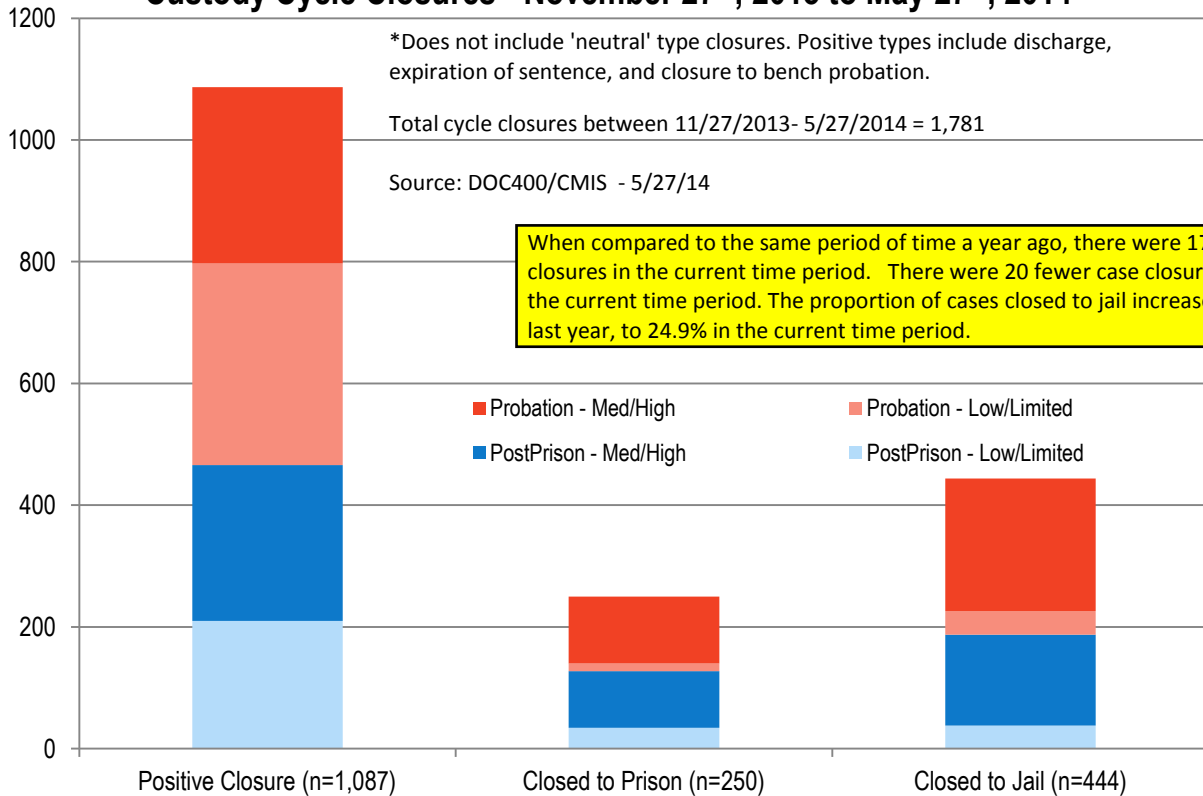
Contact Lauren Brown with questions or concerns [lauren.brown@multco.us](mailto:lauren.brown@multco.us)  
 Current and past editions of this report are available at [www.lpscc.org](http://www.lpscc.org)



### Adult Community Supervision\*



### Custody Cycle Closures - November 27<sup>th</sup>, 2013 to May 27<sup>th</sup>, 2014\*



Contact Lauren Brown with questions or concerns [lauren.brown@multco.us](mailto:lauren.brown@multco.us)  
 Current and past editions of this report are available at [www.lpscc.org](http://www.lpscc.org)

