



Local Public Safety Coordinating Council of Multnomah County

Public Safety Trends Summary

The Public Safety Trends document provides an executive level summary of operational data for many of the decision points and agencies in Multnomah County's public safety system. The statistics in the Report are compiled from the Decision Support System – Justice (DSSJ) data warehouse.

February 2014

Dear Reader,

Welcome to the Public Safety Trends Summary Report produced by Multnomah County's Local Public Safety Coordinating Council (LPSCC). The purpose of this report is to provide an executive level summary of operational data for many of the decision points in the County's Public Safety System for the Council's Executive Committee, partner agency staff, and members of the public.

The statistics detailed in this report are sourced from the County's Decision Support System – Justice data warehouse (DSSJ). The data contained in DSSJ is sourced from the host agency systems and is regularly audited for accuracy. Additionally, the data presented in this report is regularly reviewed by the owner agency analysts for consistency and clarity.

The Report provides both long-term trend data and short-term descriptive statistics. The long-term trends section provides a description of how certain types of events, case types, and charge levels have changed over time. The short-term trends section provides a more detailed description of the data presented in the long-term trend section. Measures of reported Incidents, Arrest, Disposition, and Sentencing are reported at the case unit level. Measures for Booking and Custody are reported at the person level.

The Public Safety Trends Report is produced on a regular basis and serves as a starting point for broader investigations of trends in local public safety. Frequently, the Report will contain a special analysis section providing a systems perspective of specific areas in the local public safety system.

Lauren Brown
LPSCC Analyst

ITEMS OF NOTE

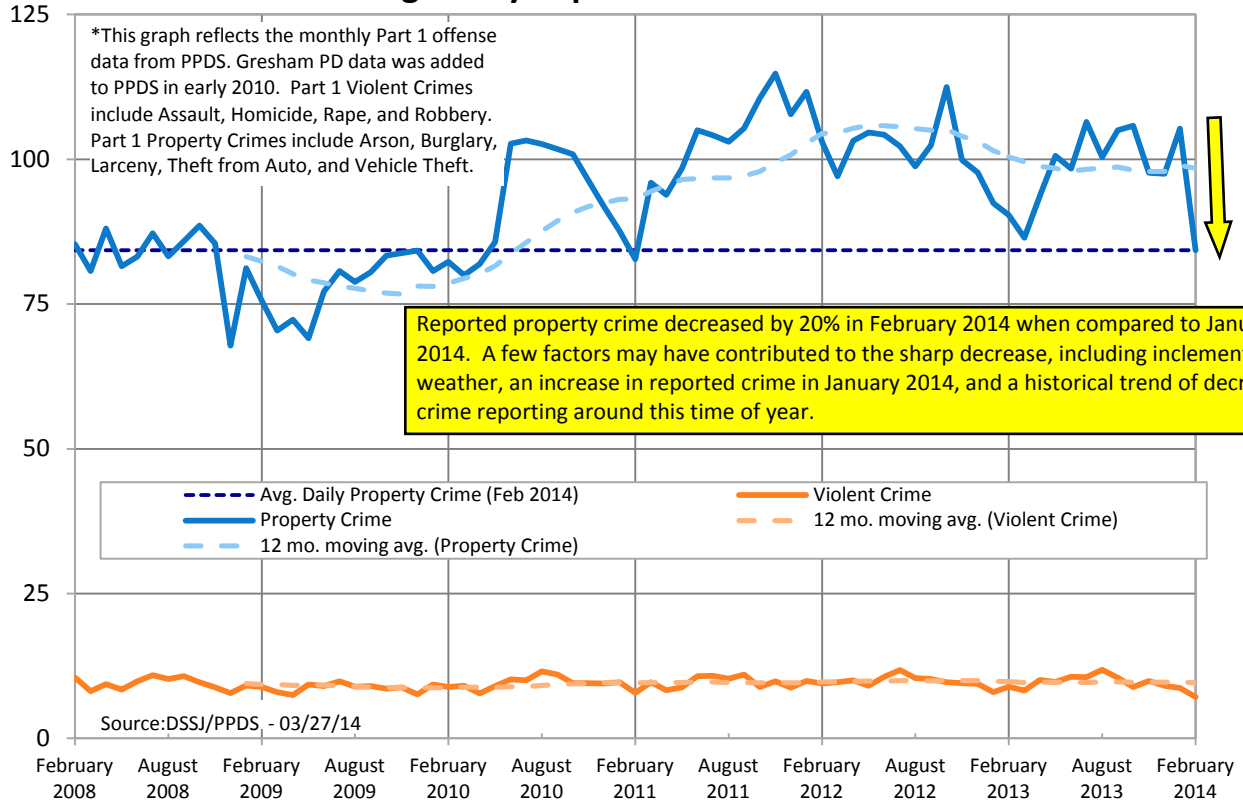
- The February 2014 public safety trends in Multnomah County appear to have been impacted by inclement weather. Reported crime, arrests, and standard bookings in the jail all decreased substantially when compared to the prior month.
- Decreases in reported larcenies and burglaries led to the overall decrease in reported Part 1 Property Crime.
- Though the Circuit Court had a closure due to the weather, a similar decreasing trend was not seen in disposed cases.
- The number of probation and post-prison supervision cycle closures and the proportion of supervision cycle closures to jail have increased when compared to the same time period the prior year.



Contact Lauren Brown with questions or concerns lauren.brown@multco.us
Current and past editions of this report are available at www.lpscc.org



Average Daily Reported Part 1 Offenses*



Average Daily Part 1 Offenses for February 2014

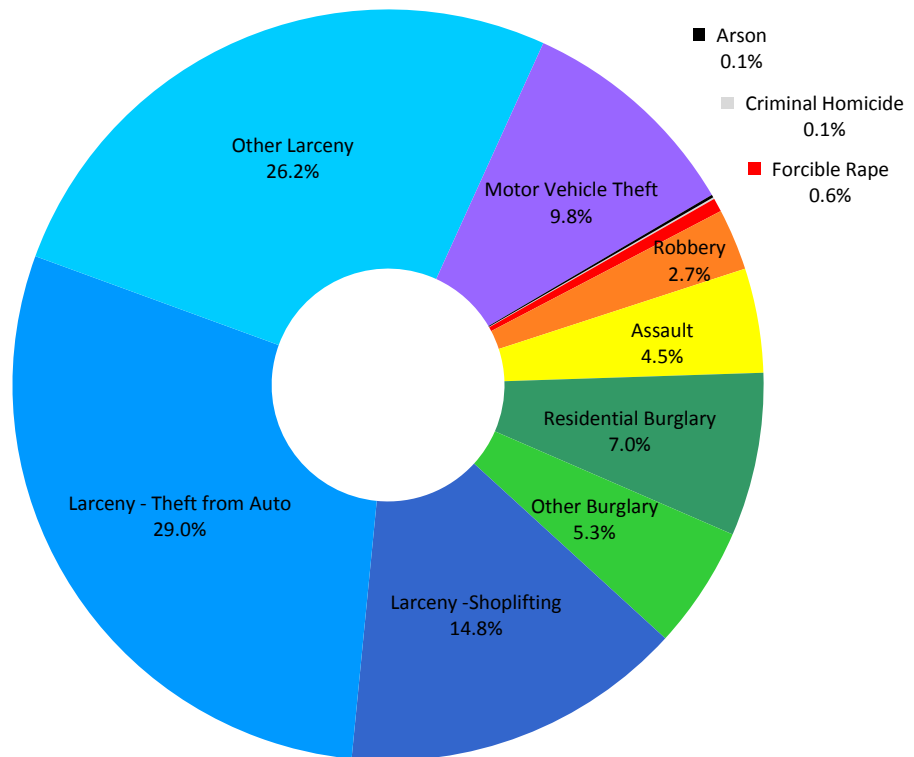
The were fewer average daily reported part 1 offenses in February 2014 when compared to both the prior month (January 2014) and February of the prior year (2013).

On average, there were approximately 14 fewer reported larcenies and five fewer reported burglaries per day during February 2014 when compared to January 2014.

There were 2 reported homicides in February 2014.

Average daily reported Part 1 offenses in February 2014 = 91.4.

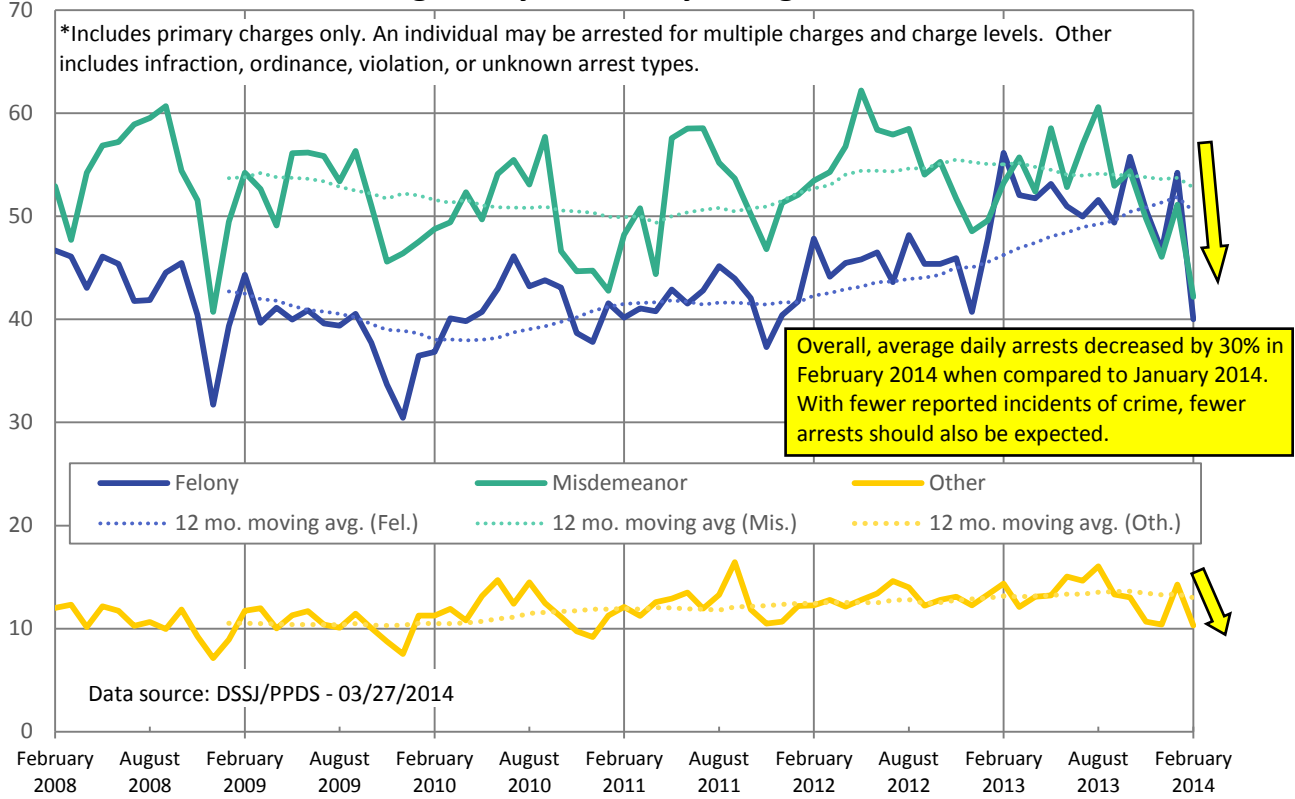
Source: DSSJ/PPDS
3/27/14



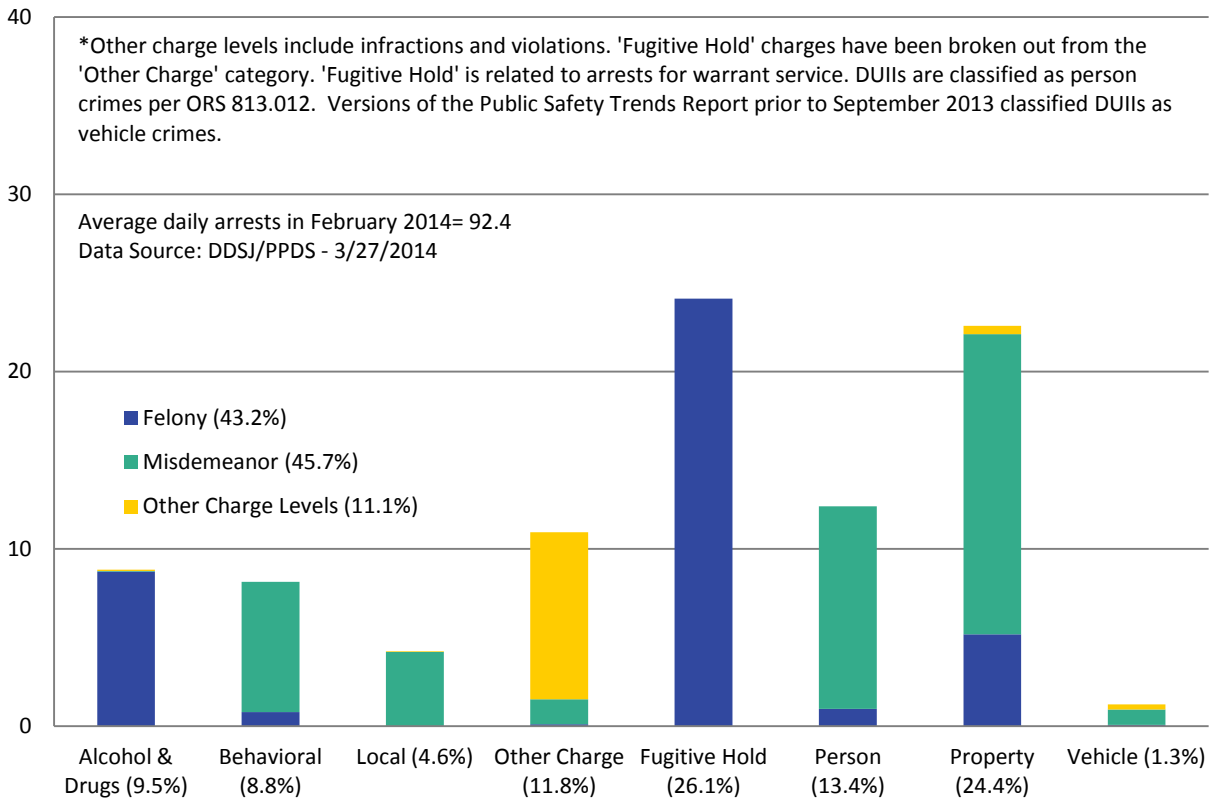
Contact Lauren Brown with questions or concerns lauren.brown@multco.us
 Current and past editions of this report are available at www.lpscc.org



Average Daily Arrests by Charge Level*



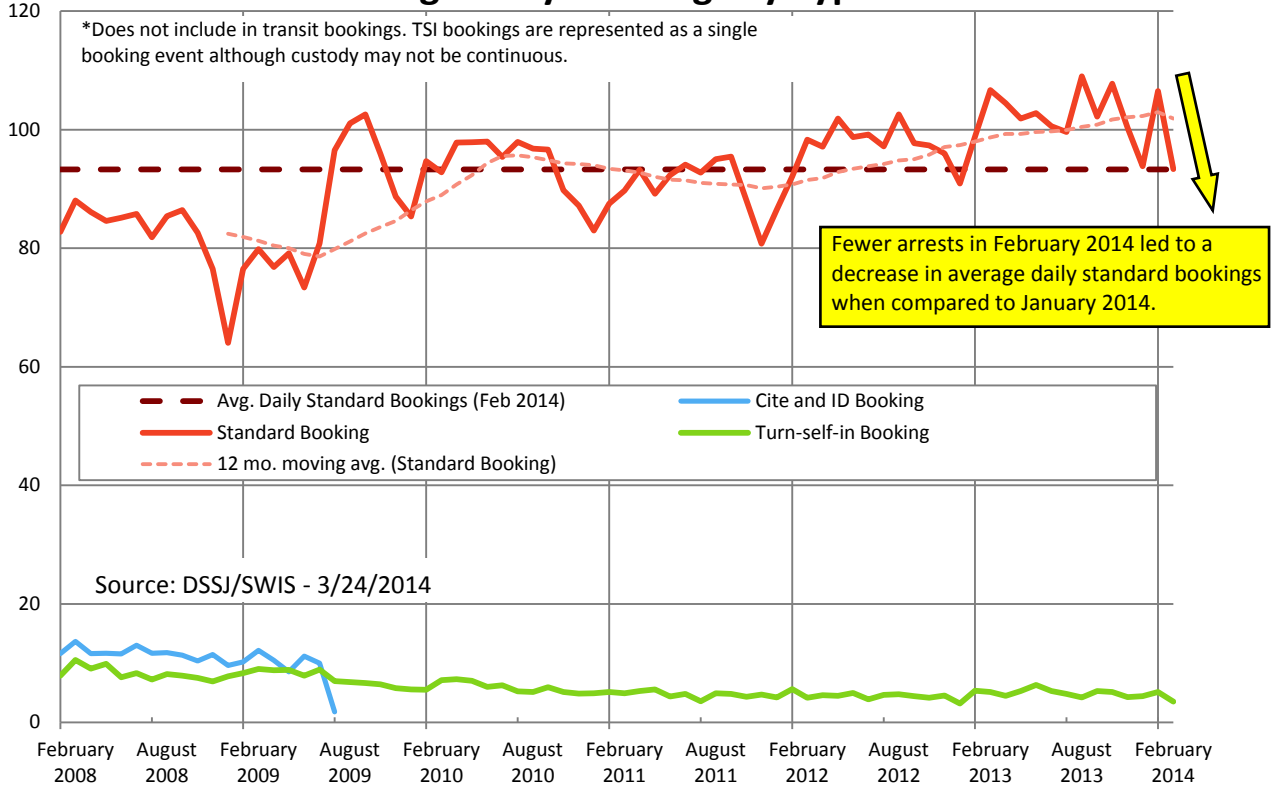
Average Daily Arrests by Type in February 2014*



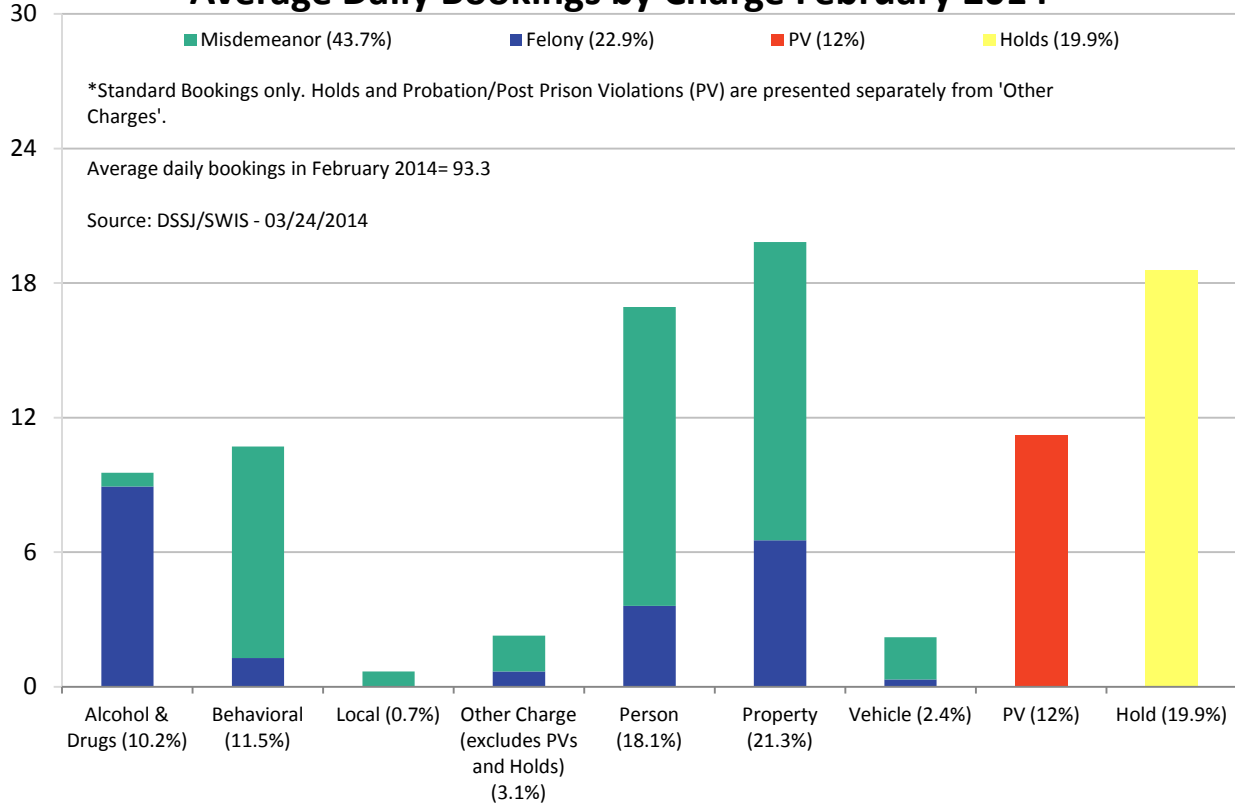
Contact Lauren Brown with questions or concerns lauren.brown@multco.us
 Current and past editions of this report are available at www.lpscc.org



Average Daily Bookings by Type*



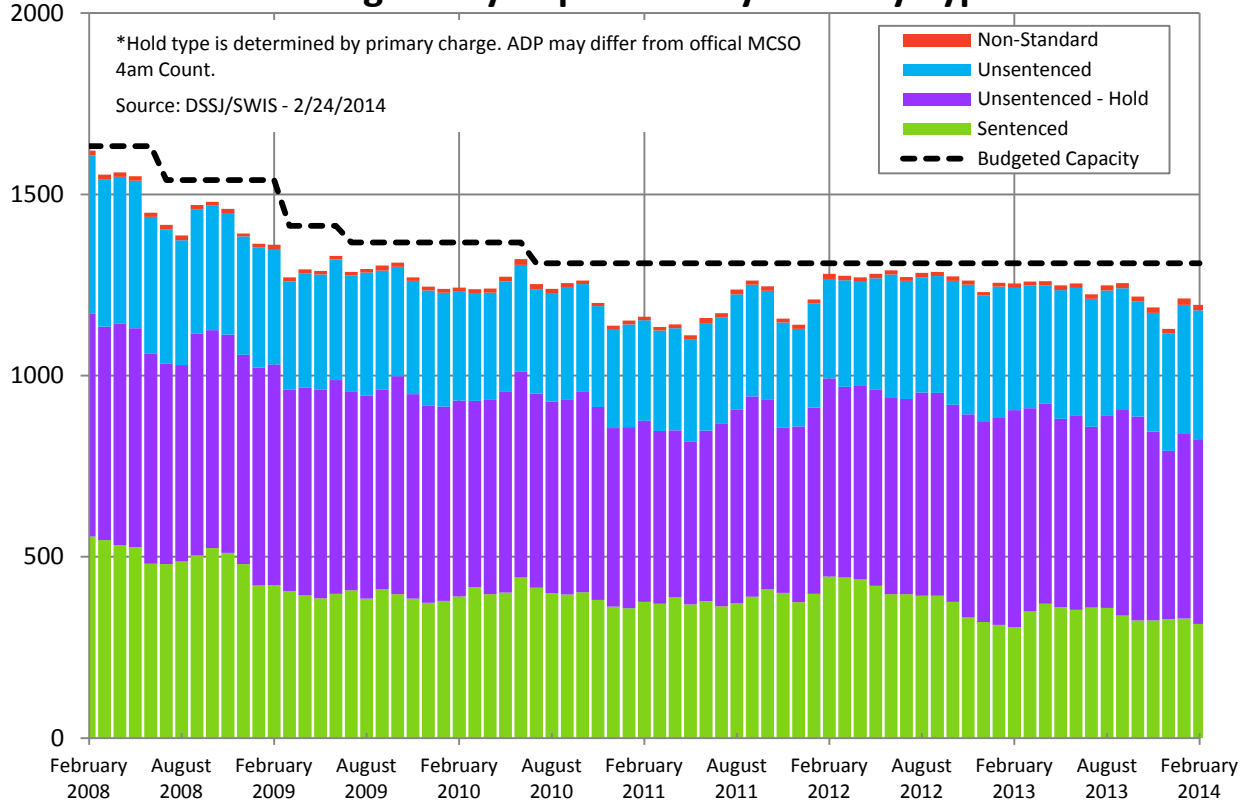
Average Daily Bookings by Charge February 2014*



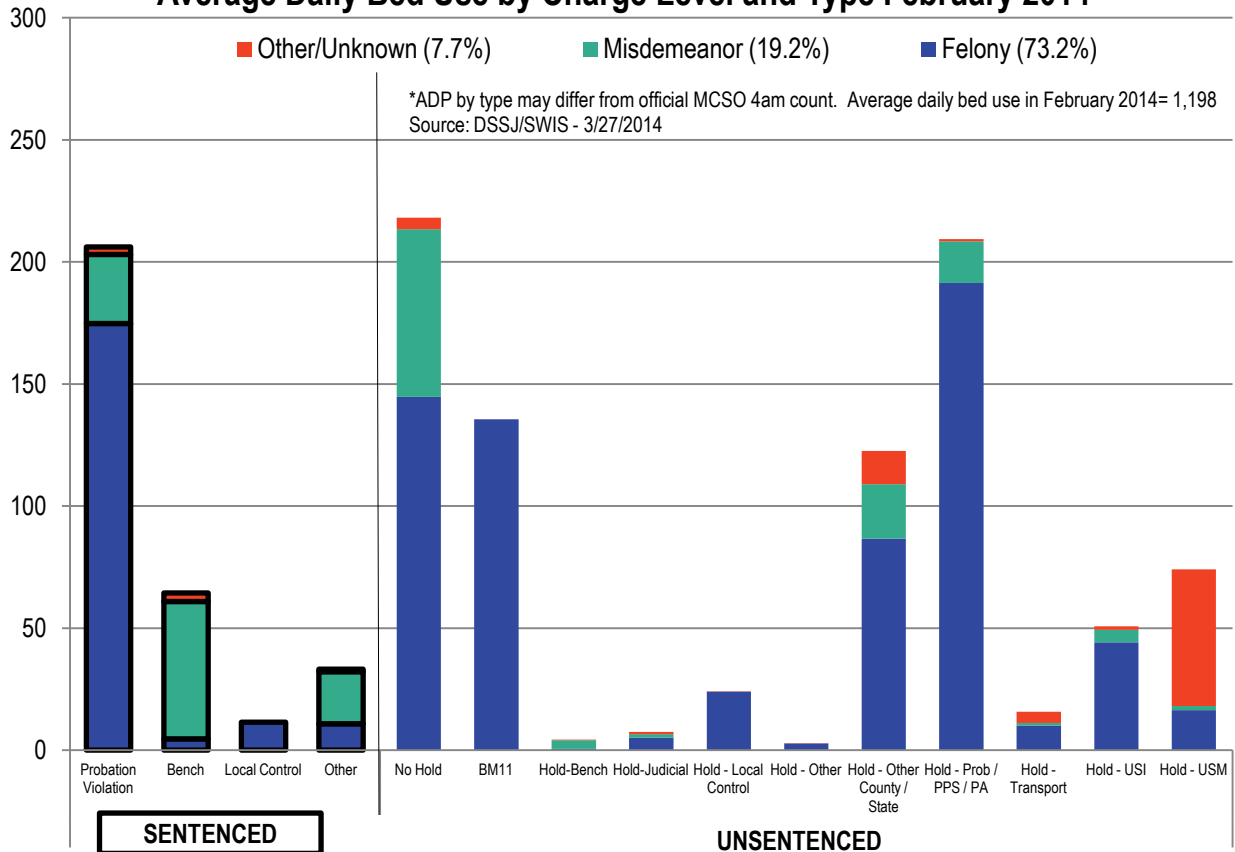
Contact Lauren Brown with questions or concerns lauren.brown@multco.us
 Current and past editions of this report are available at www.lpscc.org



Average Daily Population by Custody Type*



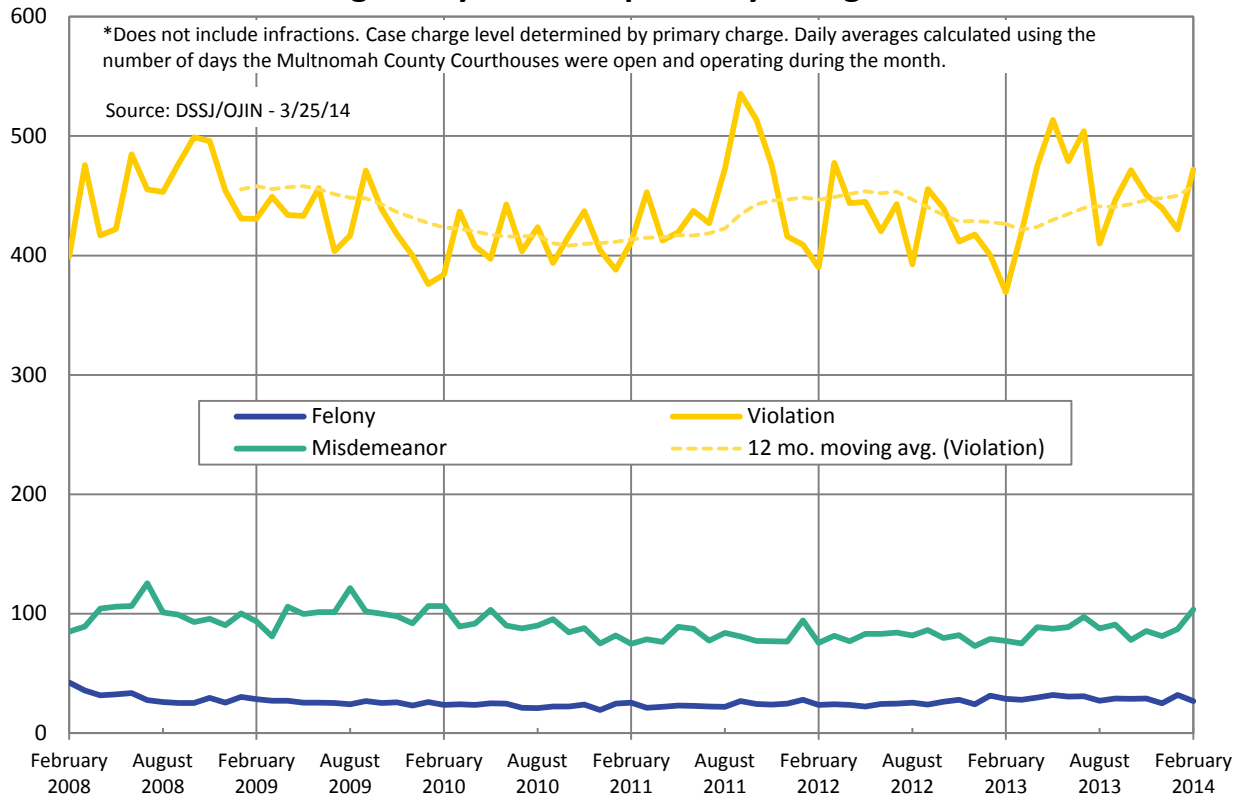
Average Daily Bed Use by Charge Level and Type February 2014*



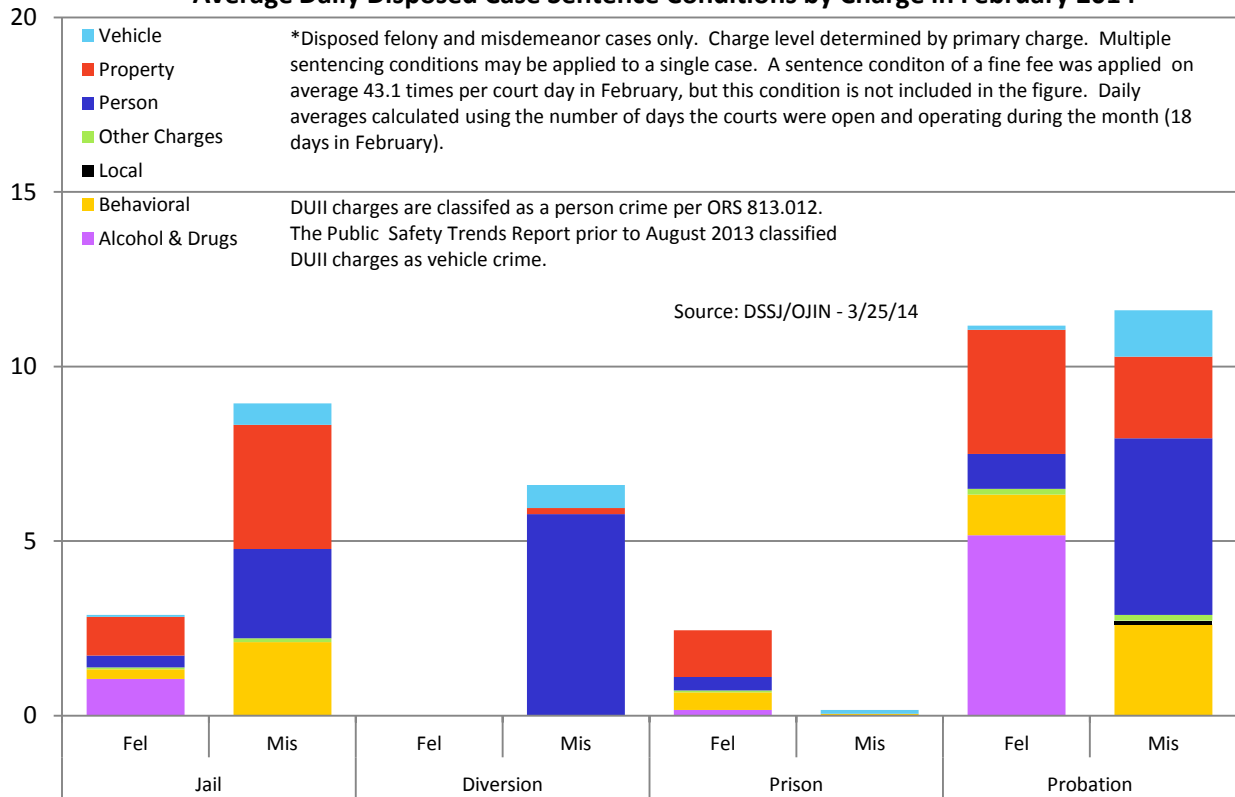
Contact Lauren Brown with questions or concerns lauren.brown@multco.us
Current and past editions of this report are available at www.lpscc.org



Average Daily Cases Disposed by Charge Level*



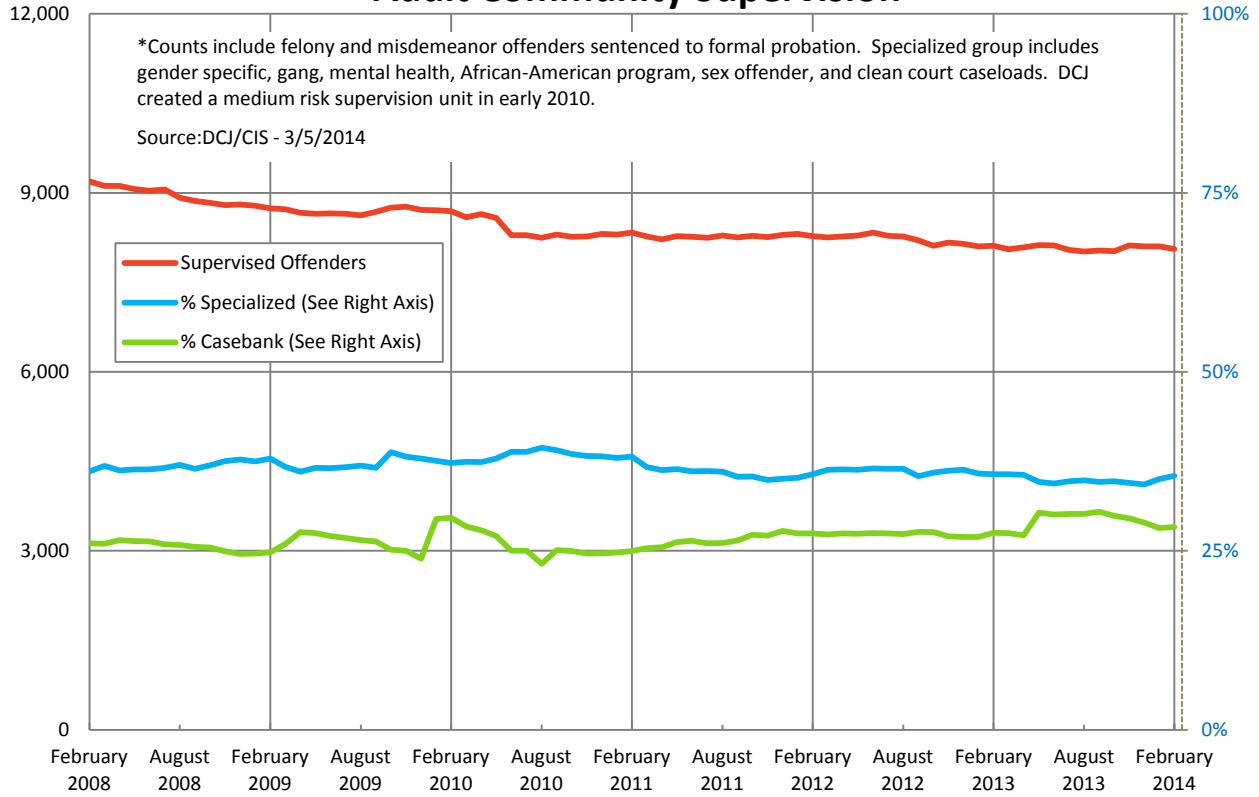
Average Daily Disposed Case Sentence Conditions by Charge in February 2014*



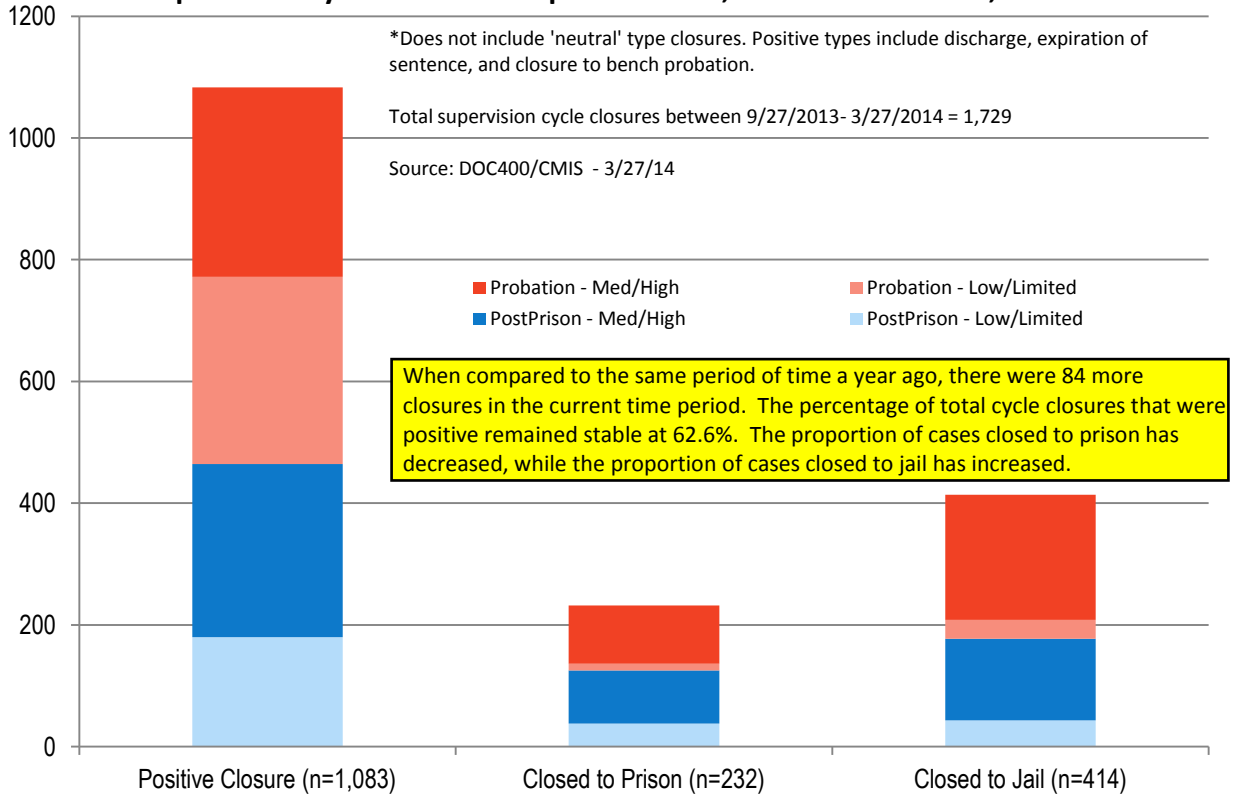
Contact Lauren Brown with questions or concerns lauren.brown@multco.us
 Current and past editions of this report are available at www.lpscc.org



Adult Community Supervision*



Supervision Cycle Closures - September 27th, 2013 to March 27th, 2014*



Contact Lauren Brown with questions or concerns lauren.brown@multco.us
Current and past editions of this report are available at www.lpscc.org

