



Local Public Safety Coordinating Council of Multnomah County

Public Safety Trends Summary

The Public Safety Trends document provides an executive level summary of operational data for many of the decision points and agencies in Multnomah County's public safety system. The statistics in the Report are compiled from the Decision Support System – Justice (DSSJ) data warehouse.

March 2014

Dear Reader,

Welcome to the Public Safety Trends Summary Report produced by Multnomah County's Local Public Safety Coordinating Council (LPSCC). The purpose of this report is to provide an executive level summary of operational data for many of the decision points in the County's Public Safety System for the Council's Executive Committee, partner agency staff, and members of the public.

The statistics detailed in this report are sourced from the County's Decision Support System – Justice data warehouse (DSSJ). The data contained in DSSJ is sourced from the host agency systems and is regularly audited for accuracy. Additionally, the data presented in this report is regularly reviewed by the owner agency analysts for consistency and clarity.

The Report provides both long-term trend data and short-term descriptive statistics. The long-term trends section provides a description of how certain types of events, case types, and charge levels have changed over time. The short-term trends section provides a more detailed description of the data presented in the long-term trend section. Measures of reported Incidents, Arrest, Disposition, and Sentencing are reported at the case unit level. Measures for Booking and Custody are reported at the person level.

The Public Safety Trends Report is produced on a regular basis and serves as a starting point for broader investigations of trends in local public safety. Frequently, the Report will contain a special analysis section providing a systems perspective of specific areas in the local public safety system.

Lauren Brown
LPSCC Analyst

SUMMARY

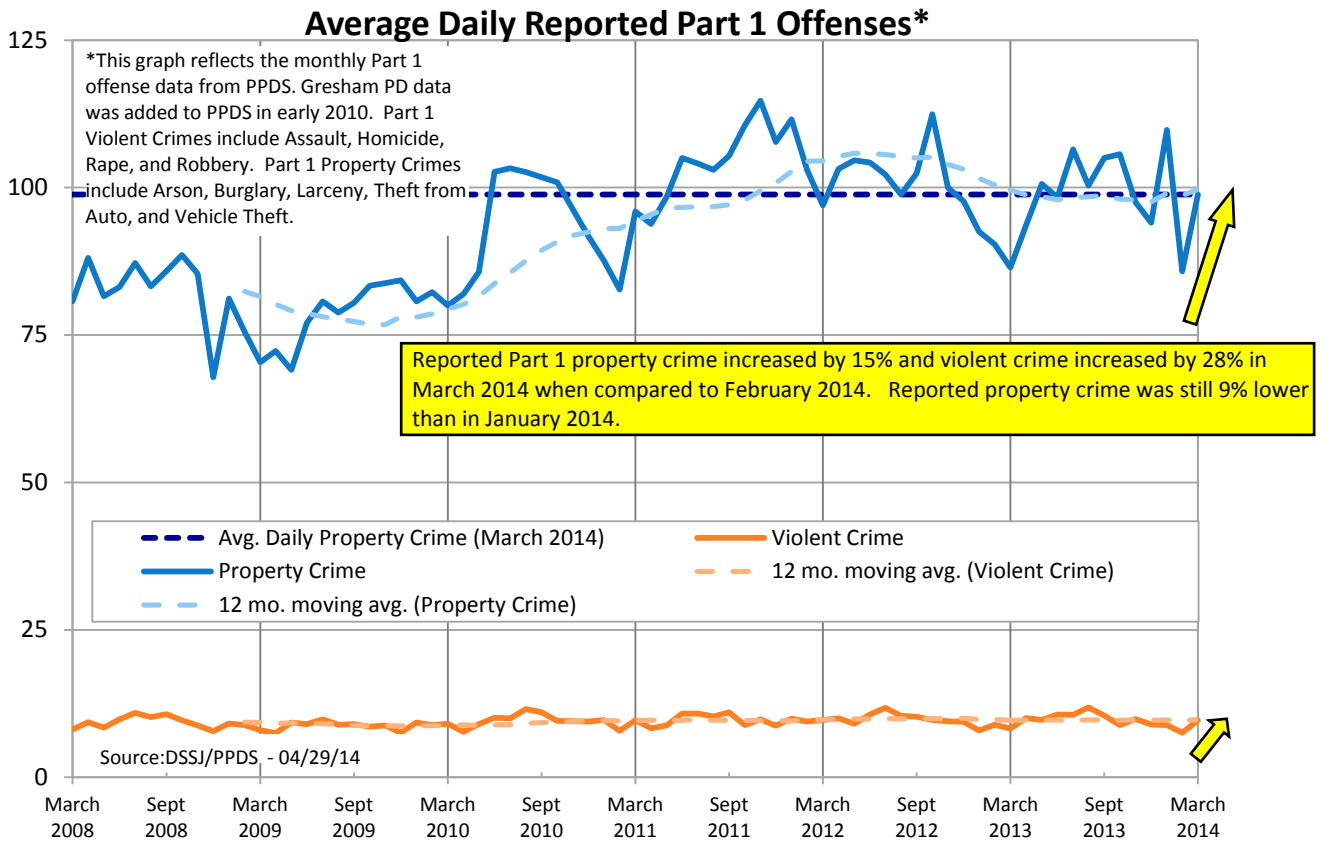
March 2014 saw increases in most public safety trends within Multnomah County. This trend is not unexpected after the steep decreases seen in February due to the wintery weather. Though the measures of public safety increased in March, most remained lower than the levels seen in January 2014. Reported incidents of Part 1 violent crime were an exception. There were more homicides, rapes, robberies, and assaults in March when compared to both February and January.

On average, jail bed use was at 96% capacity in March, up from 91% in February. This increase was driven by more arrests and thus more bookings. Data from the Multnomah County Sheriff's Office Monthly Jail Report for March 2014 indicated that other factors that can impact jail capacity trended in more favorable directions. The average length of stay decreased slightly in March, and the percentage of bookings resulting in recognizance releases increased slightly.



Contact Lauren Brown with questions or concerns lauren.brown@multco.us
Current and past editions of this report are available at www.lpscc.org





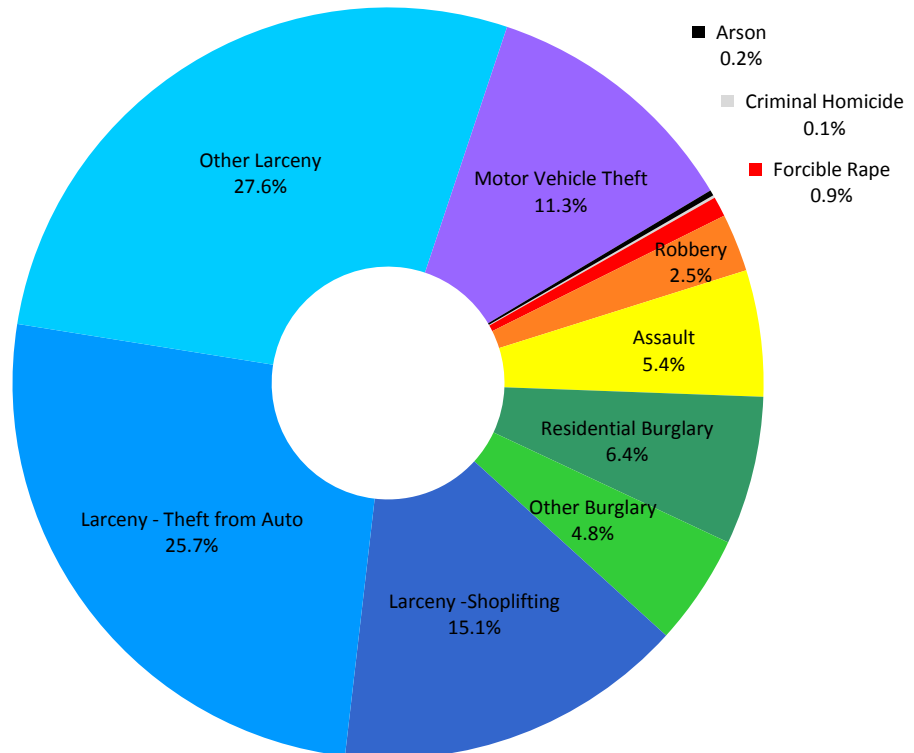
Average Daily Part 1 Offenses for March 2014

Increases were seen in all average daily reported Part 1 incident types, except Arson (March 2014 compared to February 2014).

There were 4 reported homicides in March 2014 compared to 2 in February. There were 29 incidents of forcible rape in March 2014, an increase over the 16 incidents in February 2014 and 17 in March of the prior year (2013).

On average there were 108.5 daily reported Part 1 offenses in March 2014. This represented an average increase of thirteen reported incidents per day over February.

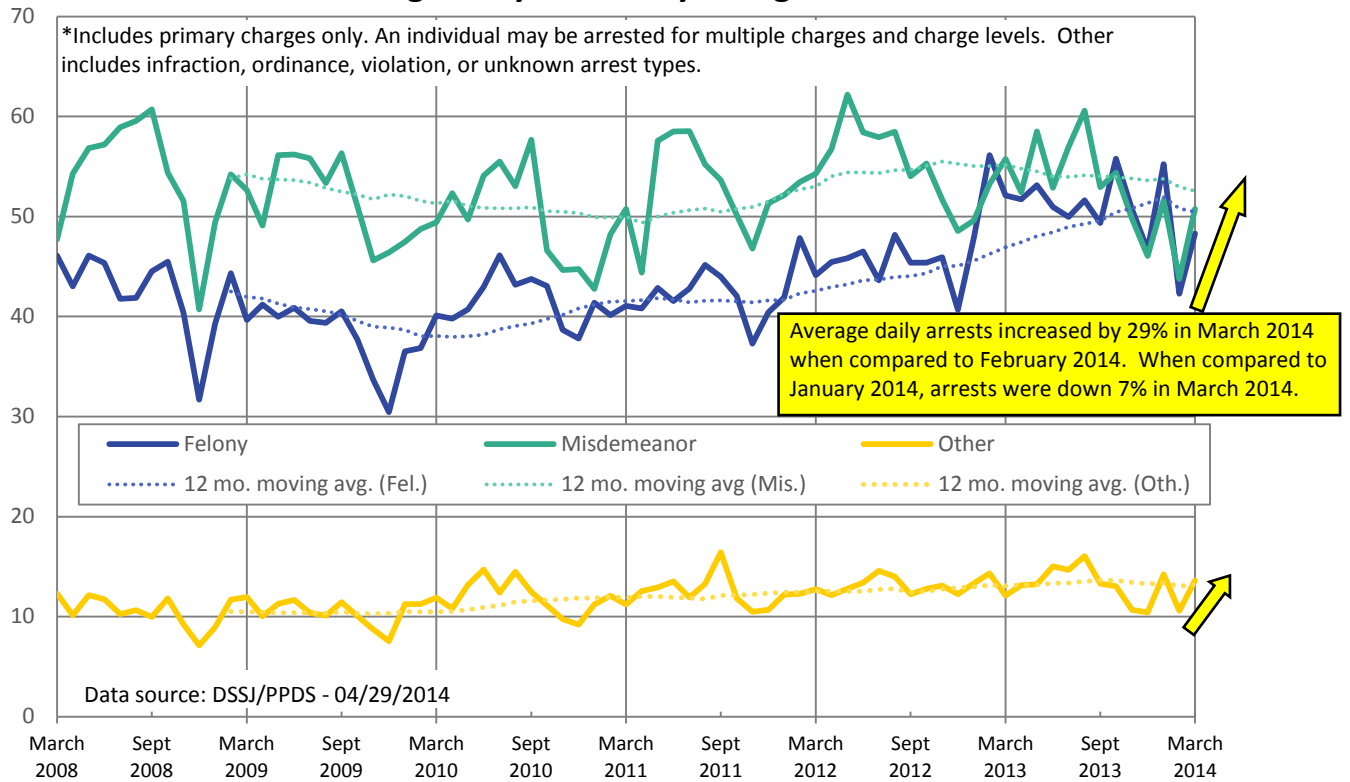
Source: DSSJ/PPDS



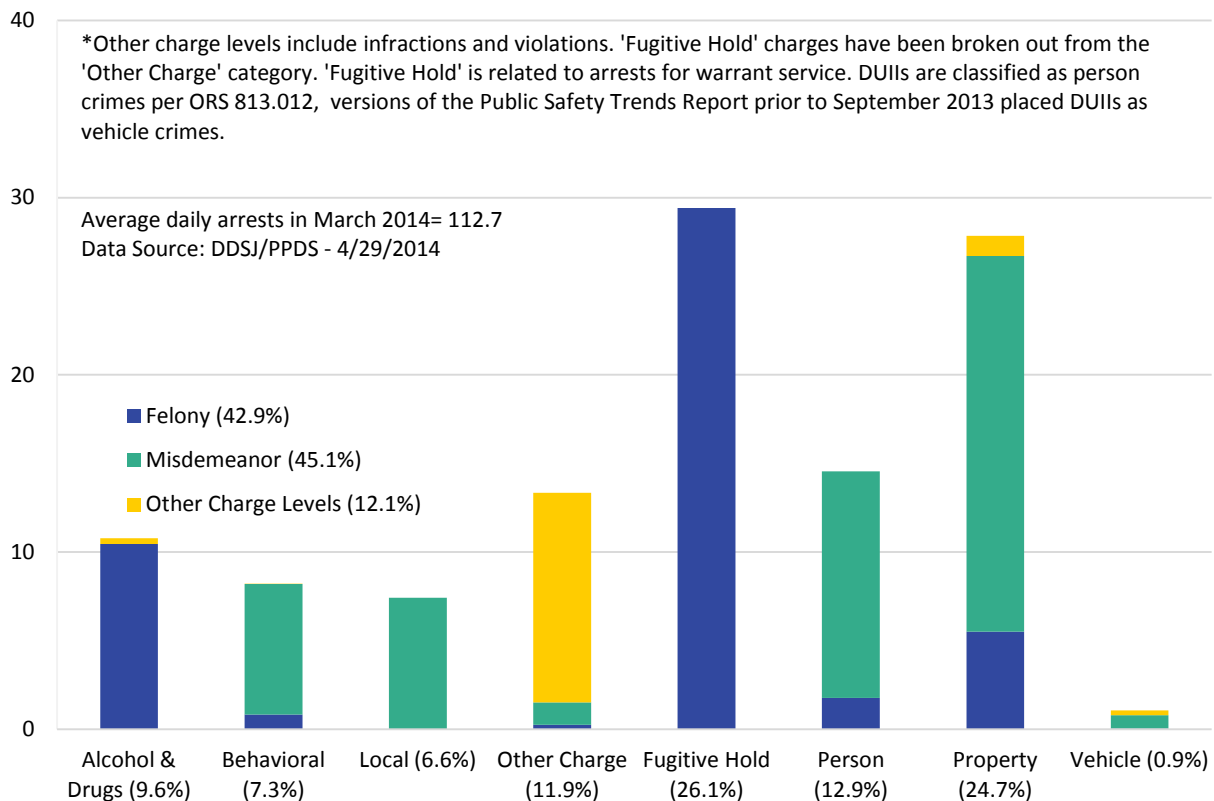
Contact Lauren Brown with questions or concerns lauren.brown@multco.us
 Current and past editions of this report are available at www.lpscc.org



Average Daily Arrests by Charge Level*



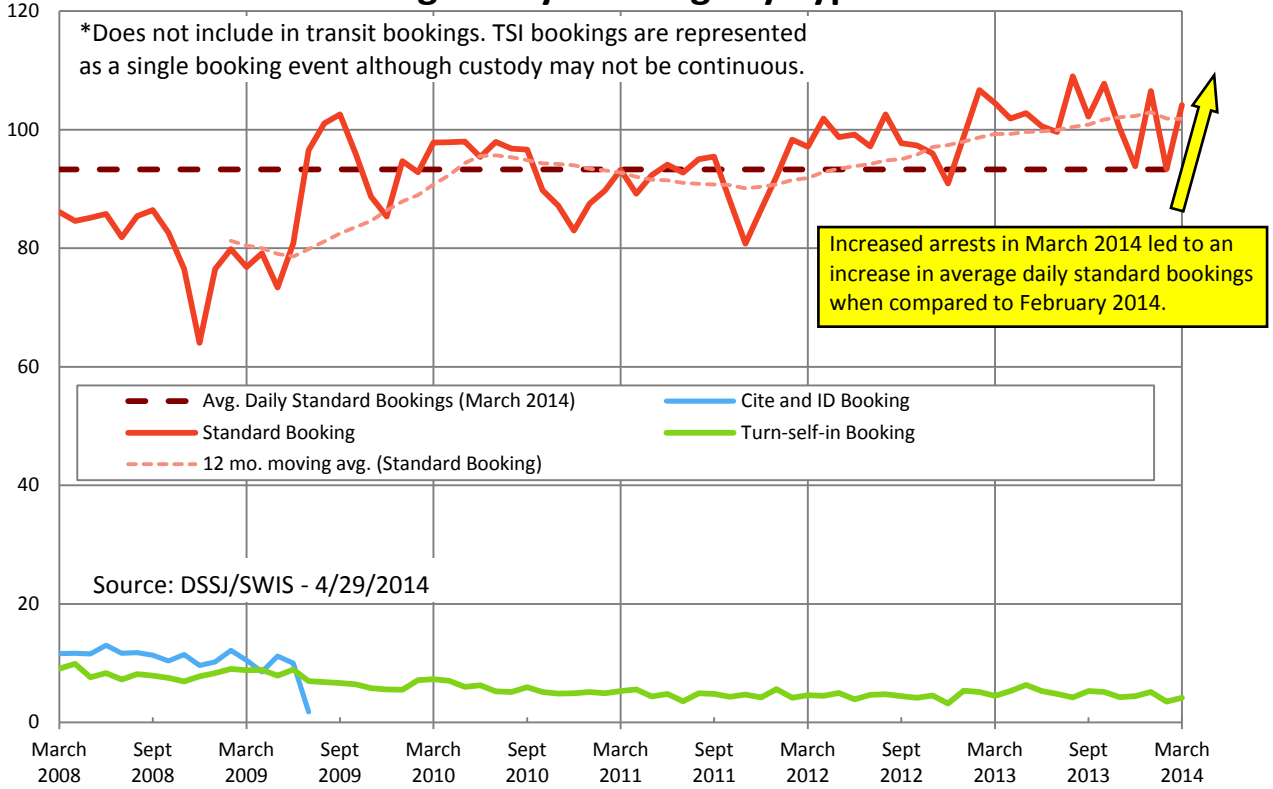
Average Daily Arrests by Type in March 2014*



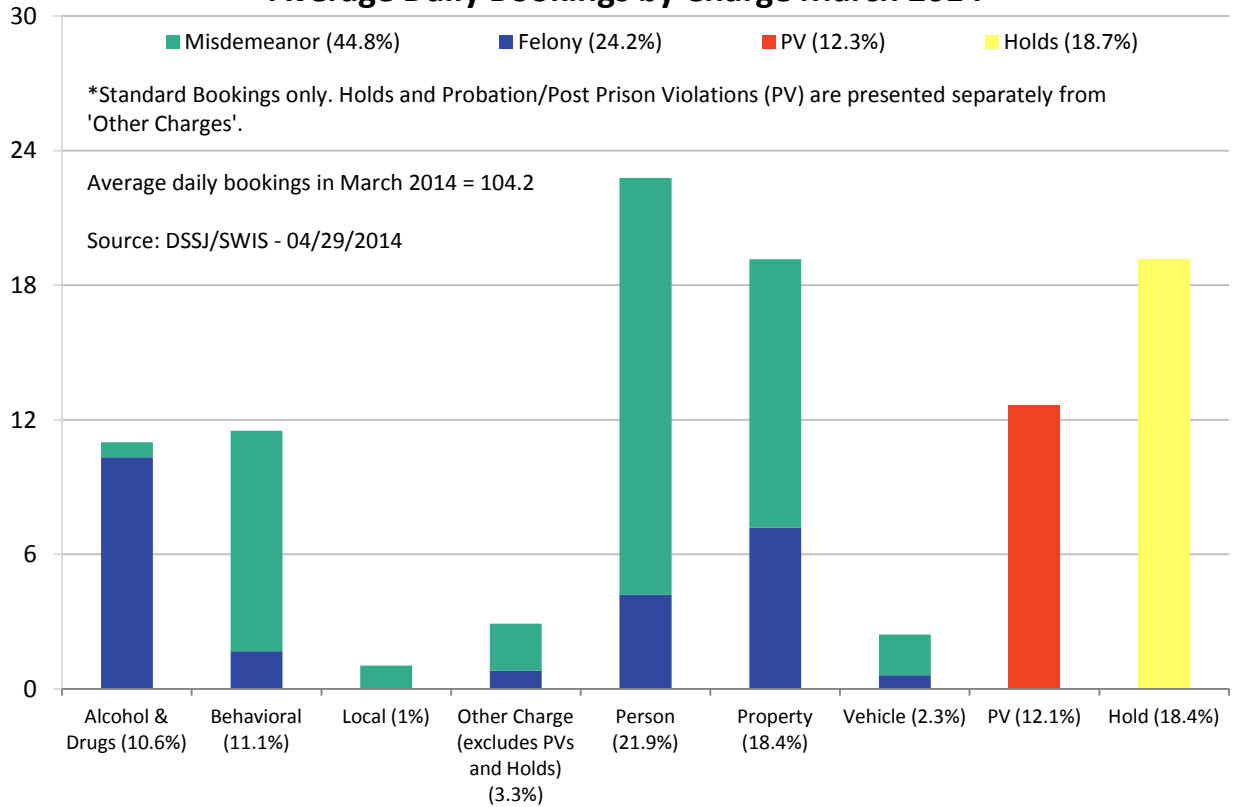
Contact Lauren Brown with questions or concerns lauren.brown@multco.us
 Current and past editions of this report are available at www.lpscc.org



Average Daily Bookings by Type*



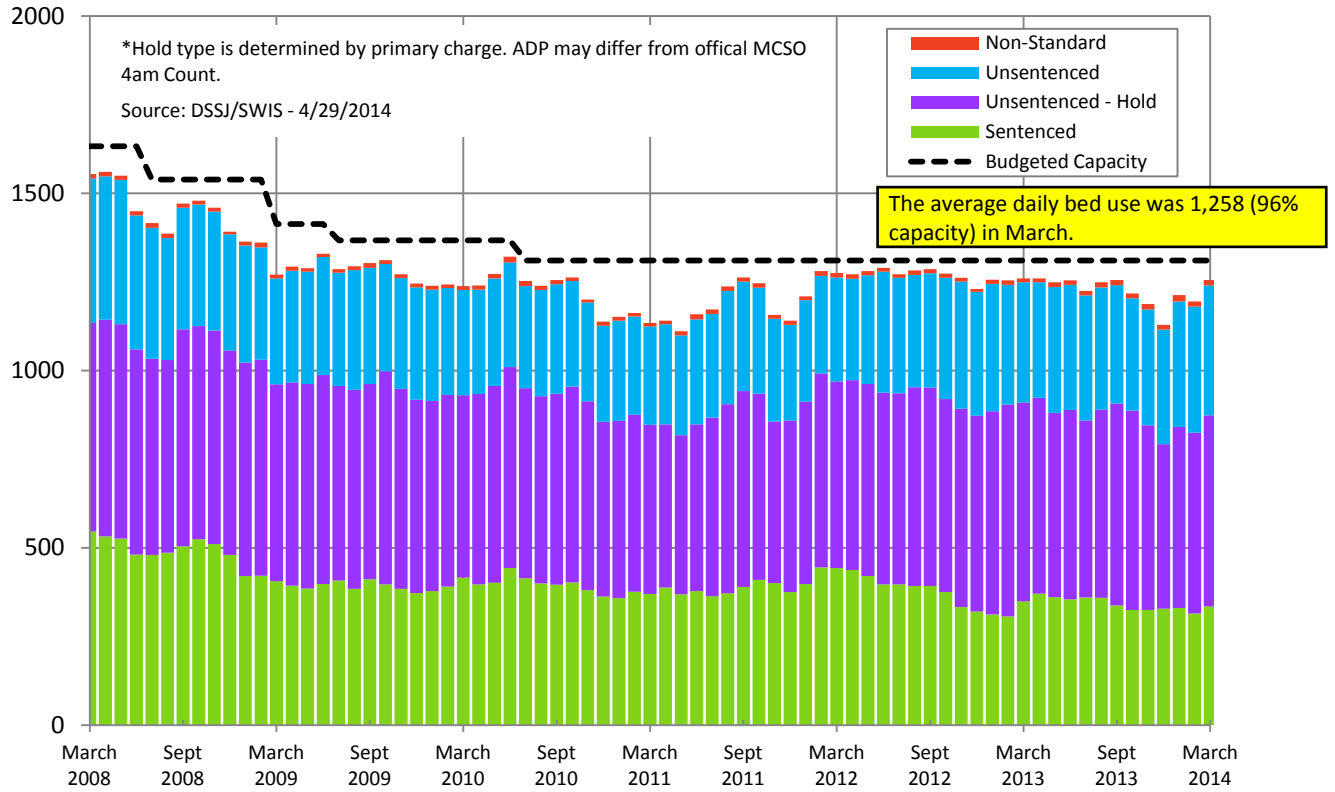
Average Daily Bookings by Charge March 2014*



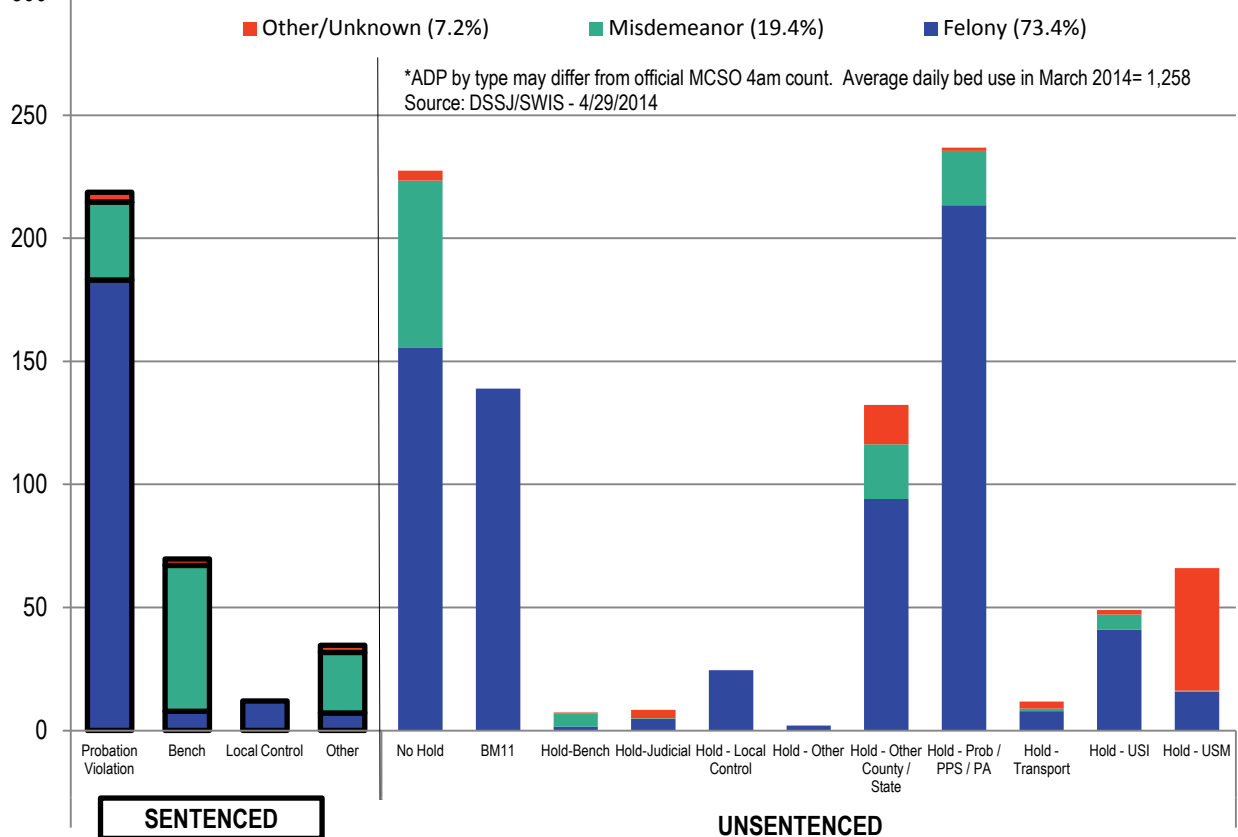
Contact Lauren Brown with questions or concerns lauren.brown@multco.us
 Current and past editions of this report are available at www.lpscc.org



Average Daily Population by Custody Type*



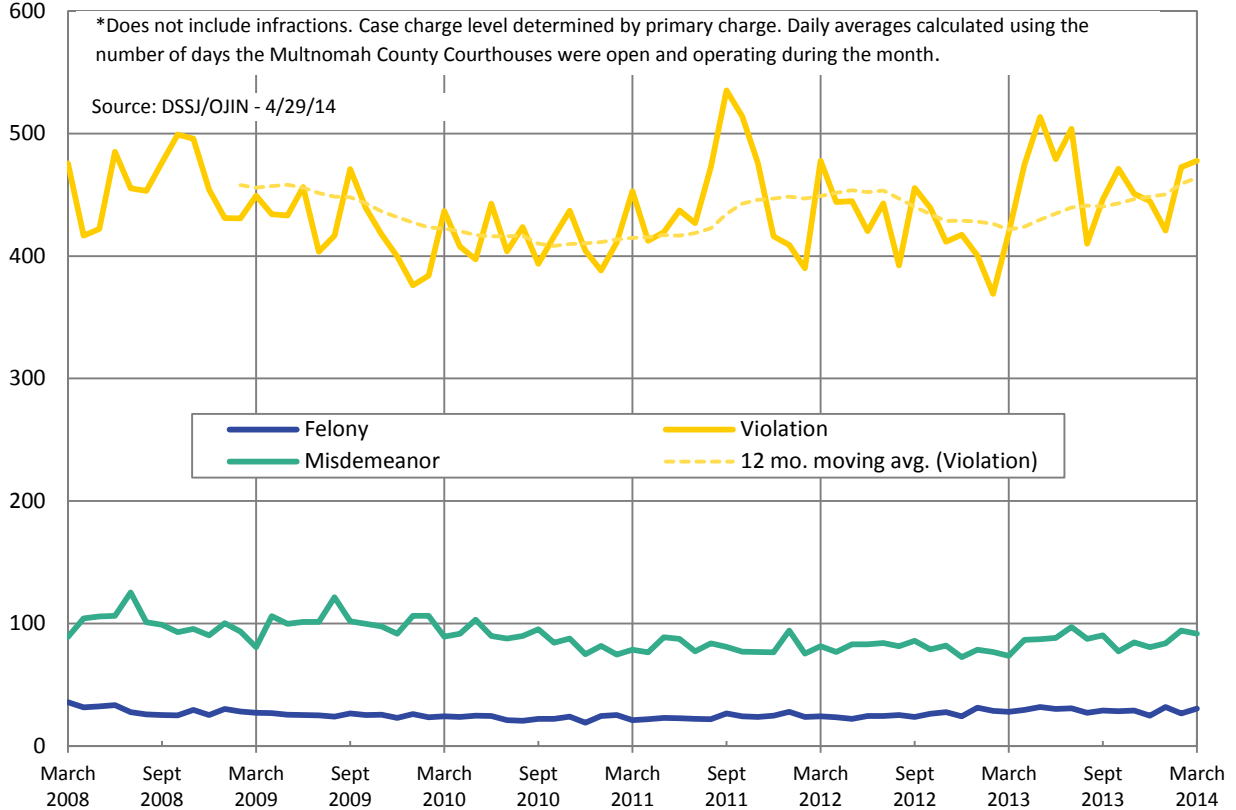
Average Daily Bed Use by Charge Level and Type March 2014*



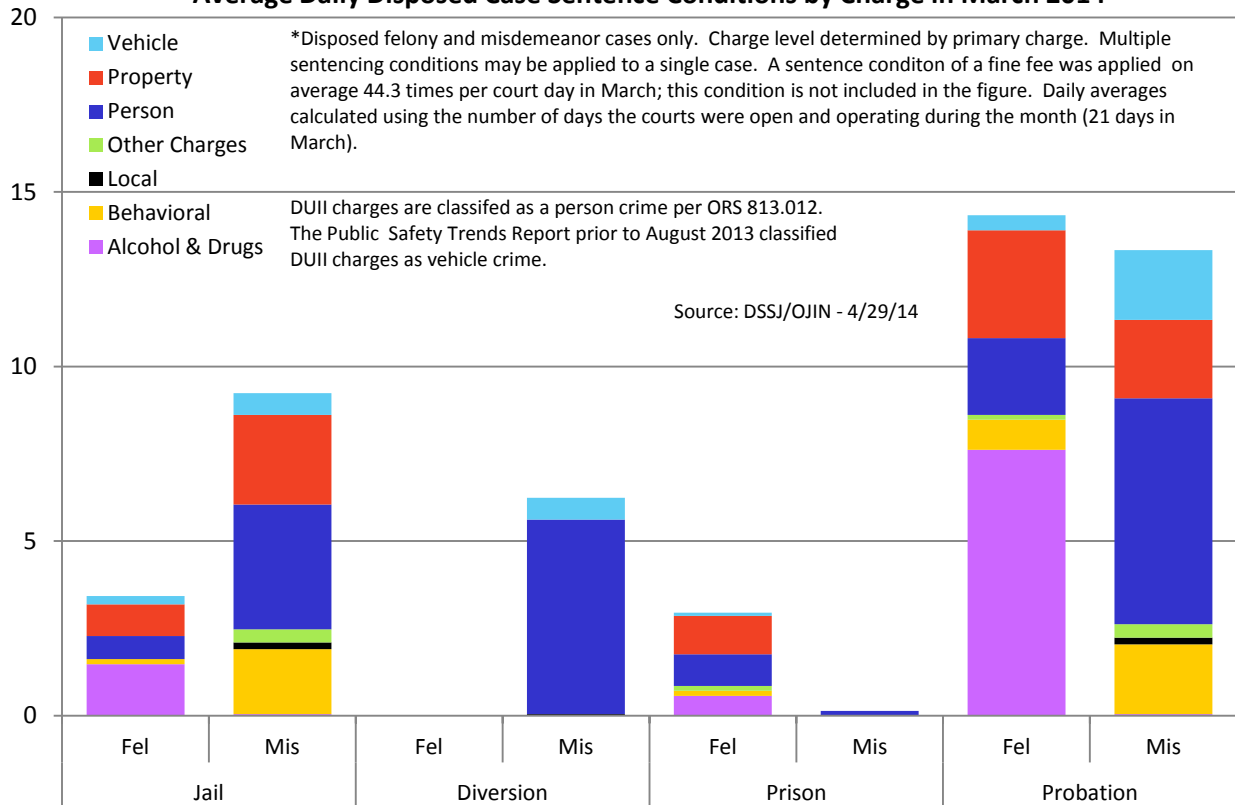
Contact Lauren Brown with questions or concerns lauren.brown@multco.us
Current and past editions of this report are available at www.lpscc.org



Average Daily Cases Disposed by Charge Level*



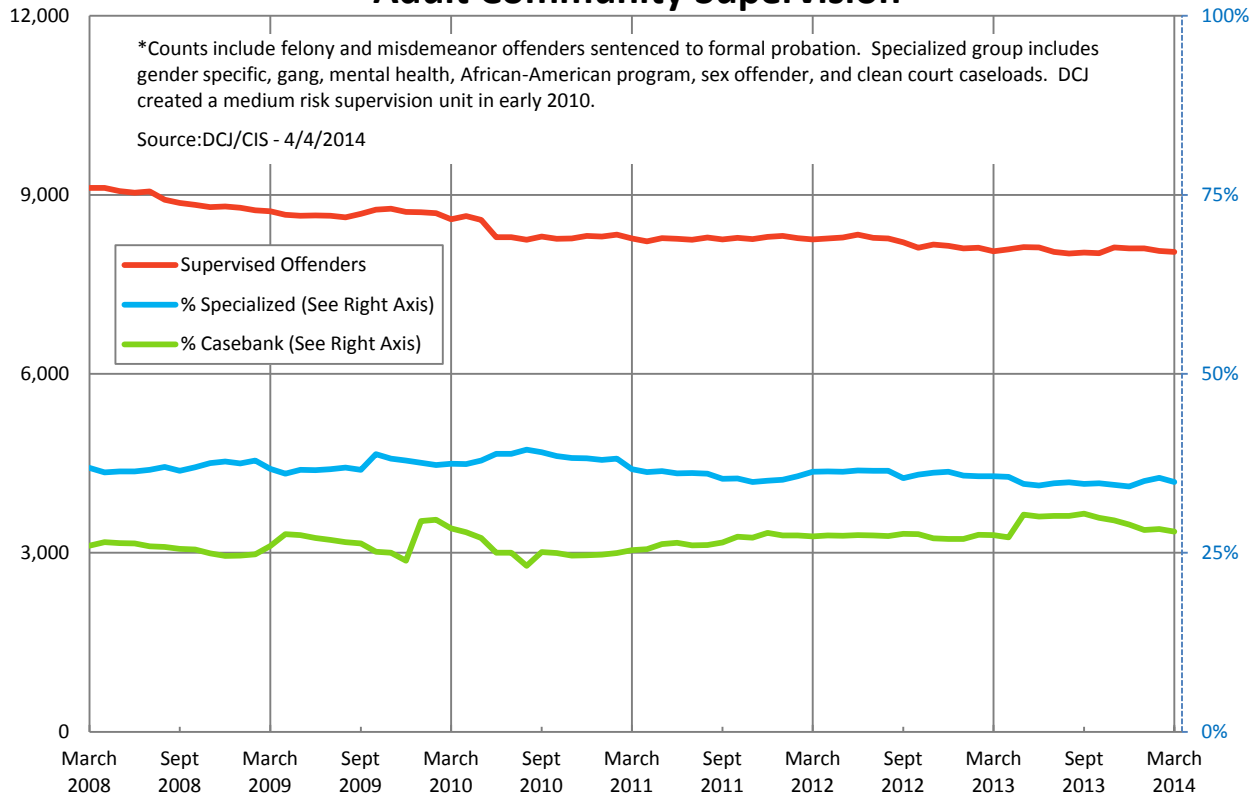
Average Daily Disposed Case Sentence Conditions by Charge in March 2014*



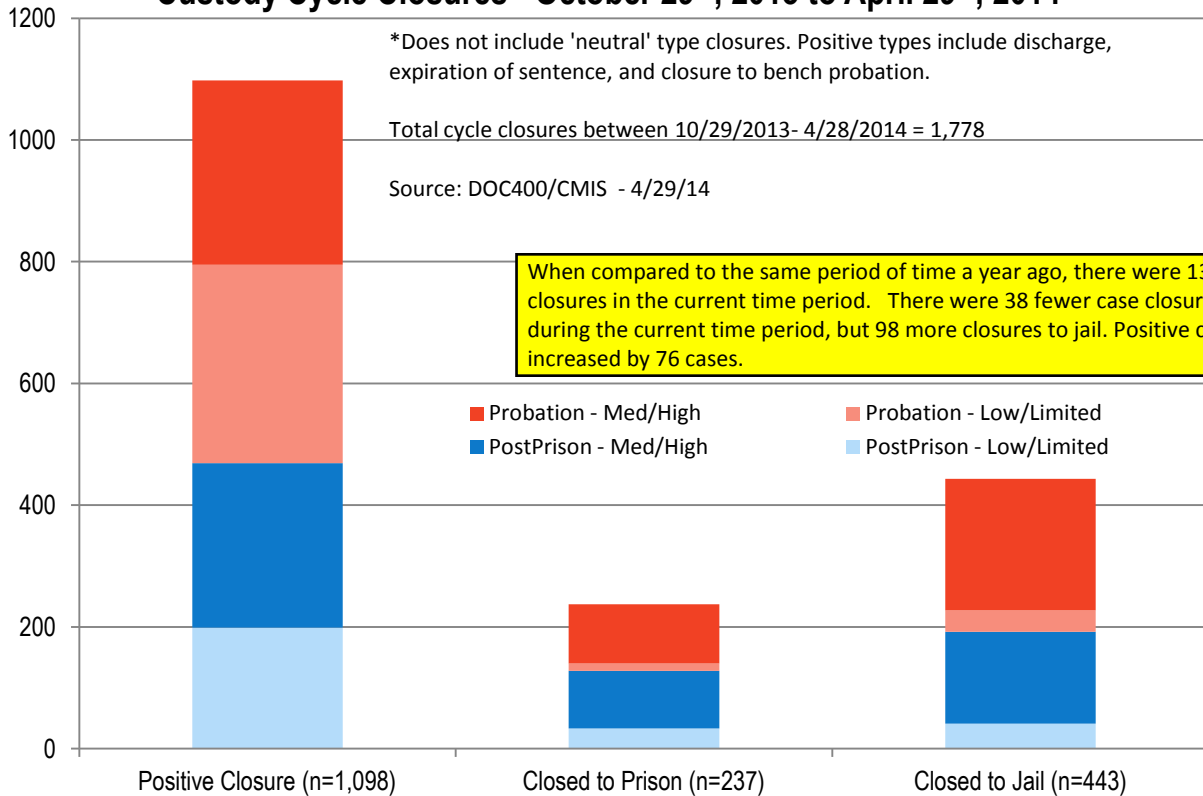
Contact Lauren Brown with questions or concerns lauren.brown@multco.us
 Current and past editions of this report are available at www.lpscc.org



Adult Community Supervision*



Custody Cycle Closures - October 29th, 2013 to April 29th, 2014*



Contact Lauren Brown with questions or concerns lauren.brown@multco.us
 Current and past editions of this report are available at www.lpscc.org

