

# Public Safety Trends Report

2014 Year End Review



## INTRODUCTION

Dear Reader,

Welcome to the 2014 Year End Public Safety Trends Report produced by Multnomah County's Local Public Safety Coordinating Council (LPSCC). The purpose of this report is to provide an executive level summary of operational data for many of the decision points in the County's Public Safety System for the Council's Executive Committee, partner agency staff, and members of the public.

Most of the statistics detailed in this report are sourced from the County's Decision Support System – Justice data warehouse (DSSJ). The data contained in DSSJ is sourced from the host agency systems and is regularly audited for accuracy. Additionally, the data presented in this report is regularly reviewed by the owner agencies' analysts for consistency and clarity. Reported offense and arrest data in DSSJ is sourced from the Portland Police Data System (PPDS). Jail data including information on bookings, releases, and custody is sourced from the Sheriff's Warrant and Information System (SWIS). Prosecution case data in DSSJ is sourced from Criminal Records Information Management and Exchange System (CRIMES). The statistics used in this report that were not sourced from DSSJ are average length of stay (provided by the Multnomah County Sheriff's Office) and adult supervision caseload (provided by the Department of Community Justice).

The Multnomah County Circuit Court converted to Odyssey (eCourt), a new records system, in May 2014. The process of integrating data from Odyssey into DSSJ is ongoing. Due to this transition, analysis focused on court decision points such as sentencing conditions are not featured in the 2014 year end report.

The report provides a description of how certain types of events, case types, and charge levels have changed over the past five years. Long-term trends are presented in charts that show average daily counts by month (solid light grey lines) to highlight month-to-month variations. Average daily counts for each year (dashed dark grey lines) are also presented to highlight year-to-year variations. A five-year average of daily counts is also presented (solid colored line) to allow readers to visualize how monthly and yearly averages vary when compared to the norm for the past five years.

Additionally, tables are included to provide a more detailed description of the data presented in the long-term trend section. These tables allow readers to compare yearly data from 2010 to 2014 to the average for that five year period. Sparklines are included in the tables to help readers visualize how specific data points have changed over time. High values in the sparkline are represented by red markers, while low values are represented by blue markers.

Narrative is provided in each section to explain the data presented in the charts and tables while highlighting and offering insight into emerging trends.

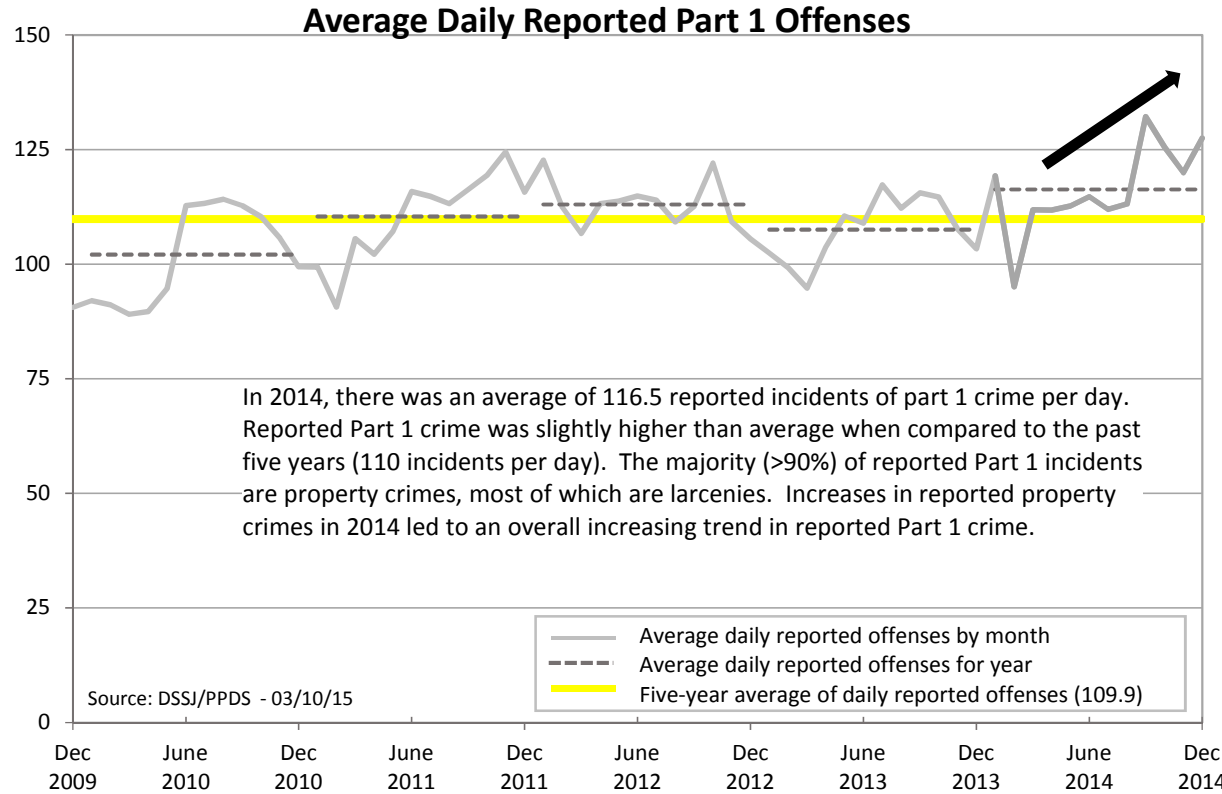
Thank you,

Lauren Brown  
LPSCC Analyst

## REPORTED CRIME

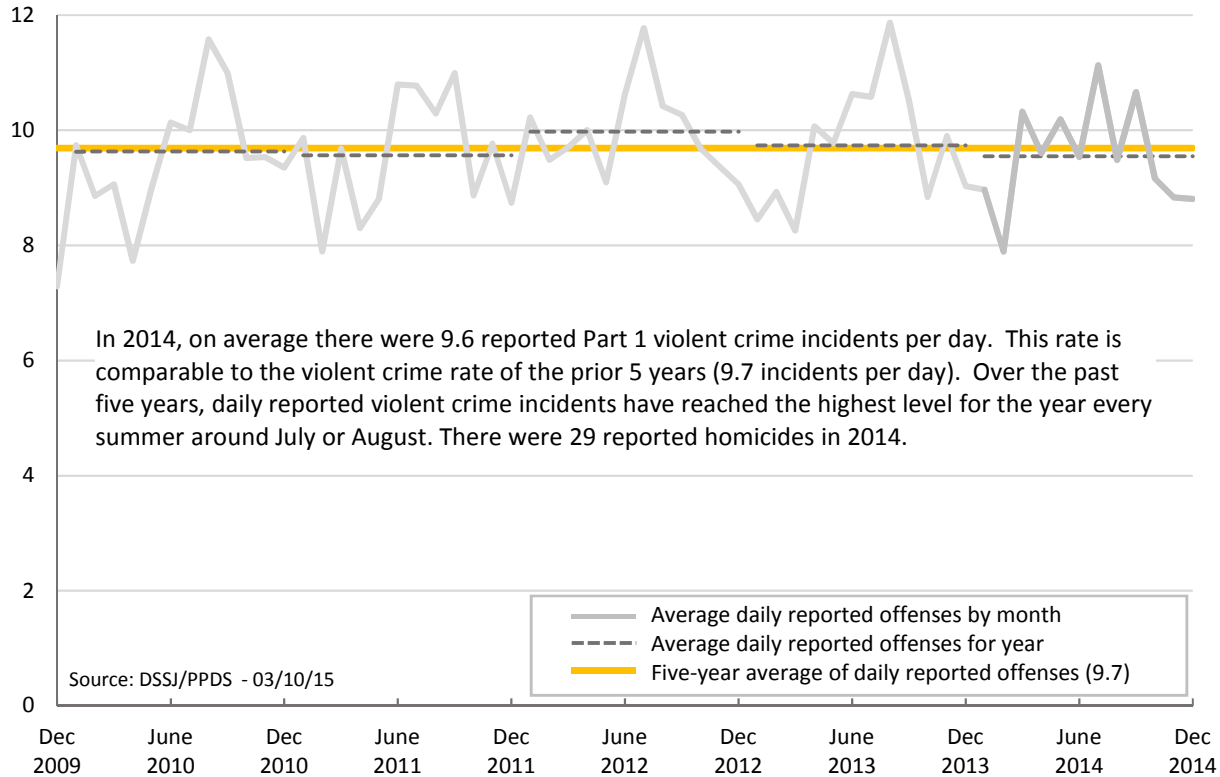
DSSJ sources the reported offense data for law enforcement in Multnomah County from PPDS (Portland Police Data System). Data for the Fairview, Gresham, and Troutdale police departments was added to PPDS in early 2010. Incidents reported by the Multnomah County Sheriff's Office, Port of Portland Police, Portland State University Security, and Portland Police Bureau are also captured in PPDS. Reported offenses data only includes crime that is reported to law enforcement.

Part 1 violent crimes include homicide, rape, robbery, and assault. Part 1 property crimes include burglary, larceny, motor vehicle theft, and arson.

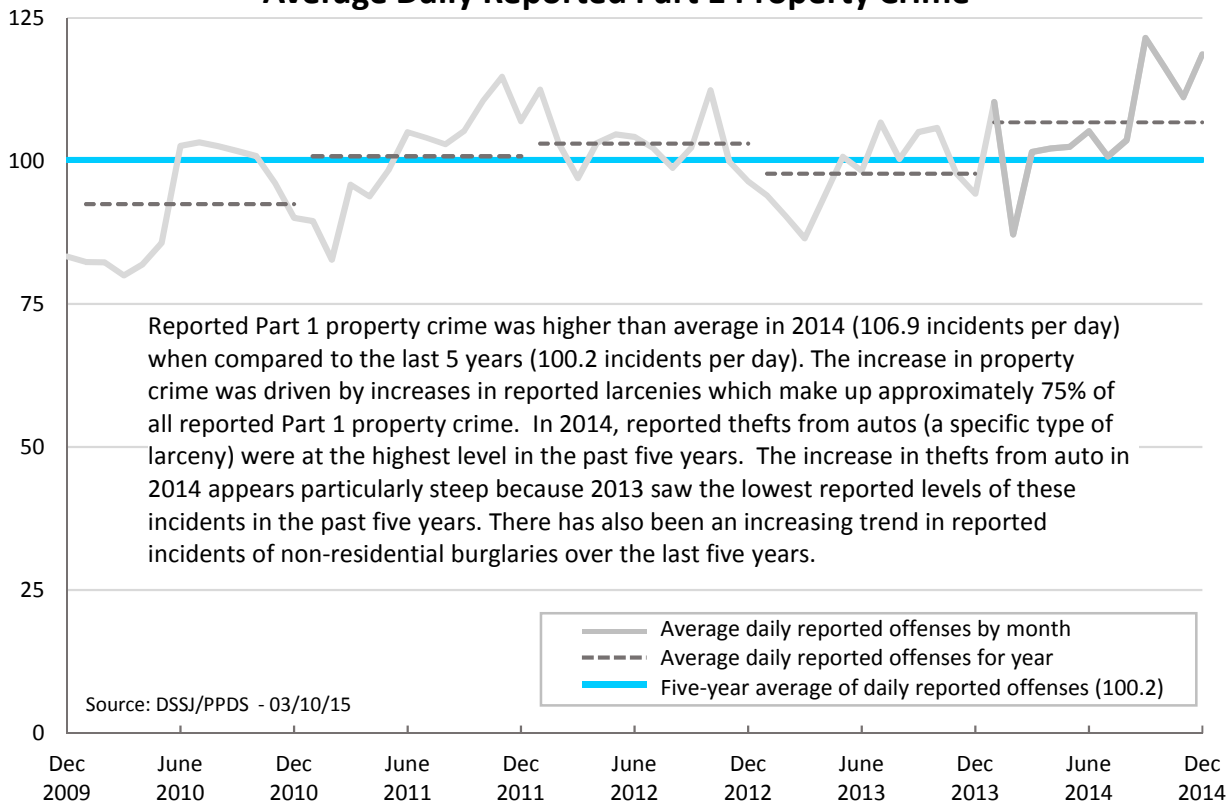


Average Daily Reported Part 1 Offenses by Type	Sparkline	2010	2011	2012	2013	2014	Five Year Average
Part 1 Violent Crime		9.6	9.6	10.0	9.7	9.6	9.7
Homicide		0.08	0.08	0.08	0.07	0.08	0.08
Rape		0.7	0.8	0.7	0.8	0.8	0.8
Robbery		3.2	3.0	3.2	3.1	2.8	3.1
Assault		5.6	5.7	6.0	5.8	5.9	5.8
Part 1 Property Crime		92.5	100.9	103.1	97.8	106.9	100.2
Burglary		13.3	14.5	15.0	13.4	13.8	14.0
<i>Residential</i>		8.7	9.6	9.8	7.9	7.8	8.8
<i>Other</i>		4.6	4.9	5.2	5.5	6.0	5.2
Larceny		67.8	74.5	75.0	72.9	80.8	74.2
<i>Shoplifting</i>		13.2	13.3	13.5	14.4	14.5	13.8
<i>Theft from Auto</i>		31.3	33.6	32.0	26.3	34.5	31.5
<i>Other</i>		23.3	27.6	29.5	32.1	31.8	28.9
Motor Vehicle Theft		10.8	11.1	12.4	11.0	11.8	11.4
Arson		0.7	0.9	0.7	0.6	0.5	0.7
<b>Total Reported Part 1 Crime</b>		<b>102.1</b>	<b>110.5</b>	<b>113.0</b>	<b>107.6</b>	<b>116.5</b>	<b>109.9</b>

### Average Daily Reported Part 1 Violent Crime



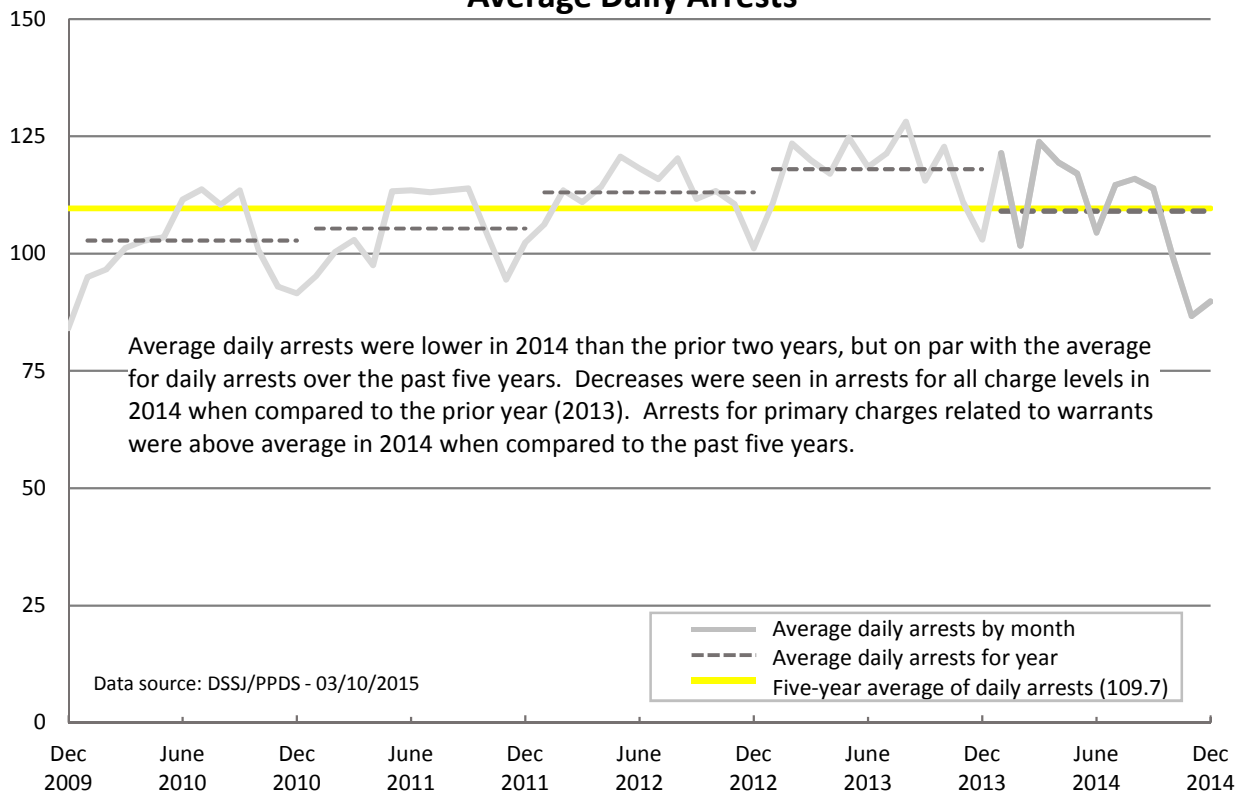
### Average Daily Reported Part 1 Property Crime



# ARRESTS

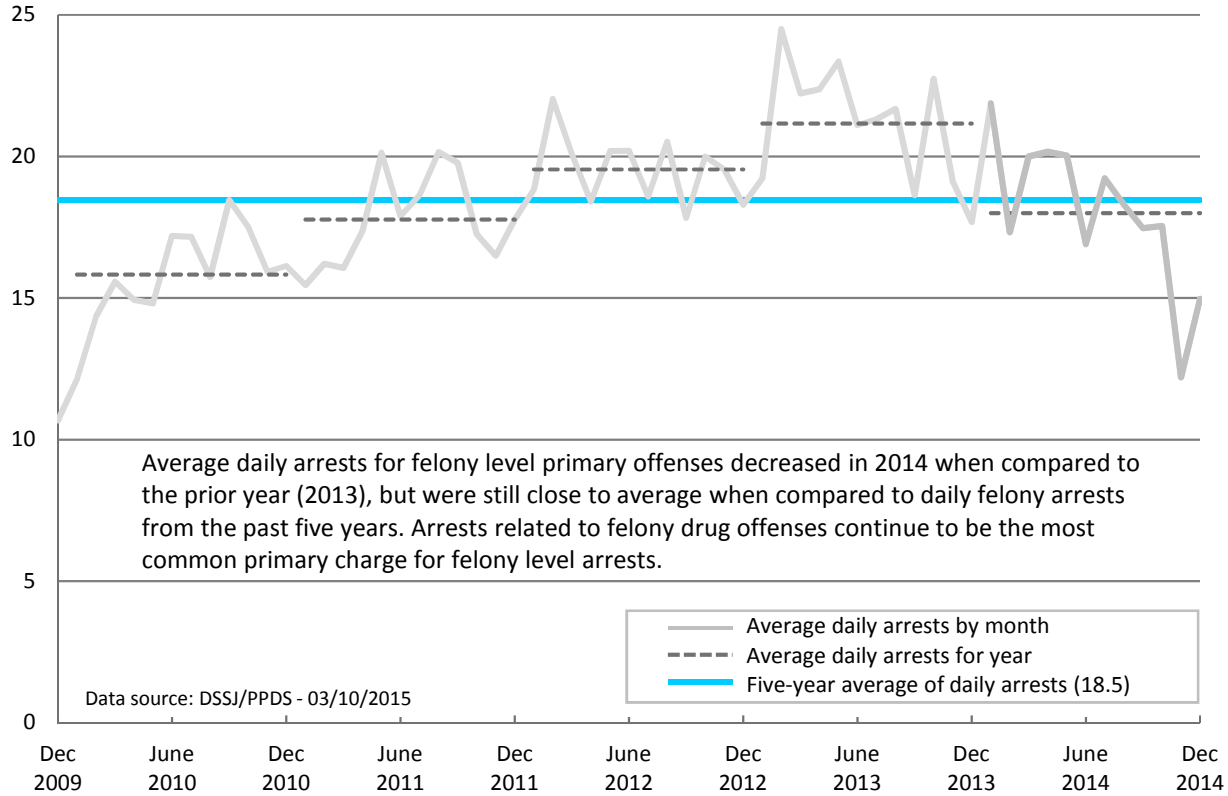
An individual may be arrested for multiple offenses with different charge levels. Charge level for arrests is based on primary offense only. The category of 'Other Charge Levels' includes infraction, ordinance, violation, or unknown arrest types.

## Average Daily Arrests

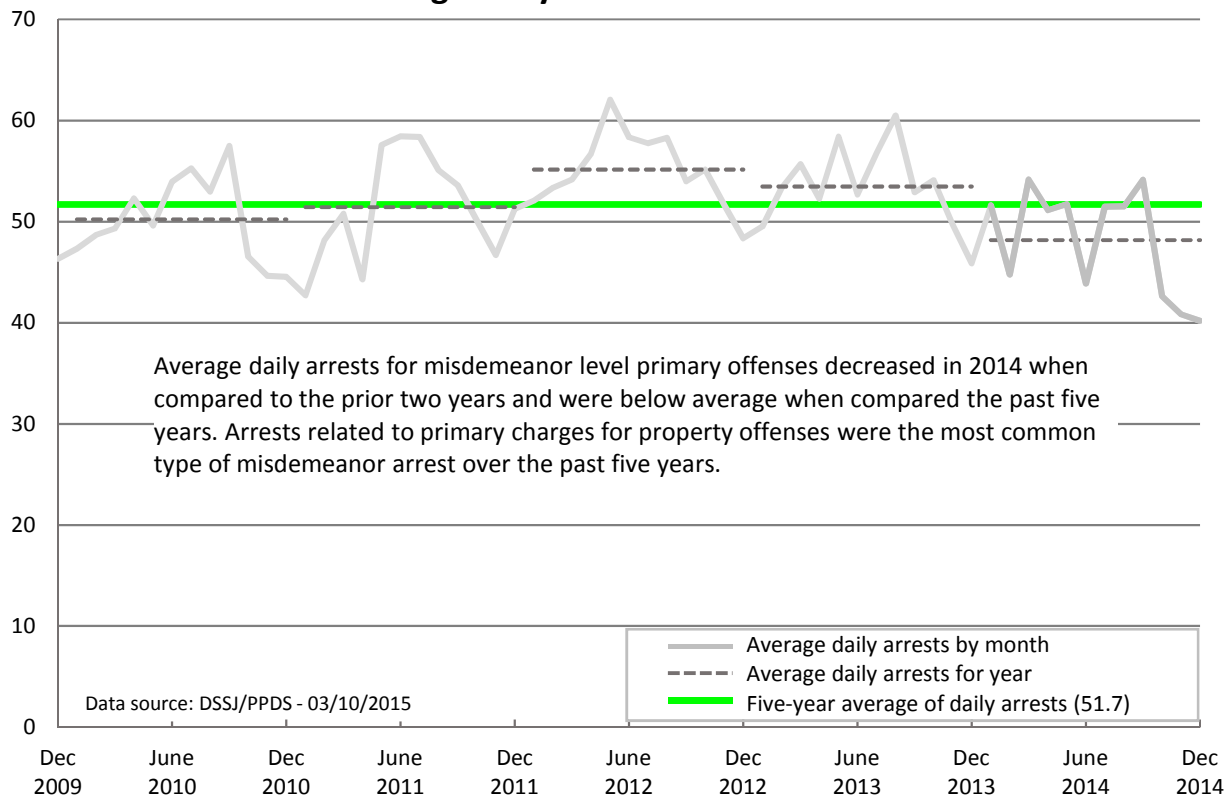


Average Daily Arrests by Charge Level and Type	Sparkline	2010	2011	2012	2013	2014	Five Year Average
<b>Felony</b>		15.8	17.8	19.5	21.1	18.0	18.5
Alcohol & Drugs		7.8	9.8	10.8	11.9	9.8	10.0
Behavioral		0.7	0.9	0.8	1.0	0.8	0.9
Other Charge		0.2	0.3	0.2	0.2	0.2	0.2
Person (includes DUII)		1.6	1.5	1.6	1.7	1.5	1.6
Property		5.4	5.3	6.0	6.2	5.6	5.7
Vehicle		0.1	0.0	0.1	0.1	0.0	0.1
<b>Misdemeanor</b>		50.2	51.5	55.2	53.5	48.2	51.7
Alcohol & Drugs		0.1	0.1	0.1	0.1	0.0	0.1
Behavioral		8.0	8.2	9.5	8.8	7.4	8.4
Local		9.0	9.2	9.7	8.9	7.2	8.8
Other Charge		1.3	1.3	1.3	1.4	1.4	1.3
Person (includes DUII)		13.7	14.1	15.2	14.4	13.0	14.1
Property		17.2	17.6	18.6	19.3	18.4	18.2
Vehicle		0.9	0.8	0.8	0.8	0.7	0.8
Other Charge Levels		11.9	12.3	12.9	13.2	12.0	12.5
Fugitive Hold (Warrants)		24.9	23.8	25.5	30.2	30.9	27.1
<b>Total Arrests</b>		<b>102.8</b>	<b>105.4</b>	<b>113.1</b>	<b>118.0</b>	<b>109.1</b>	<b>109.7</b>

### Average Daily Felony Arrests

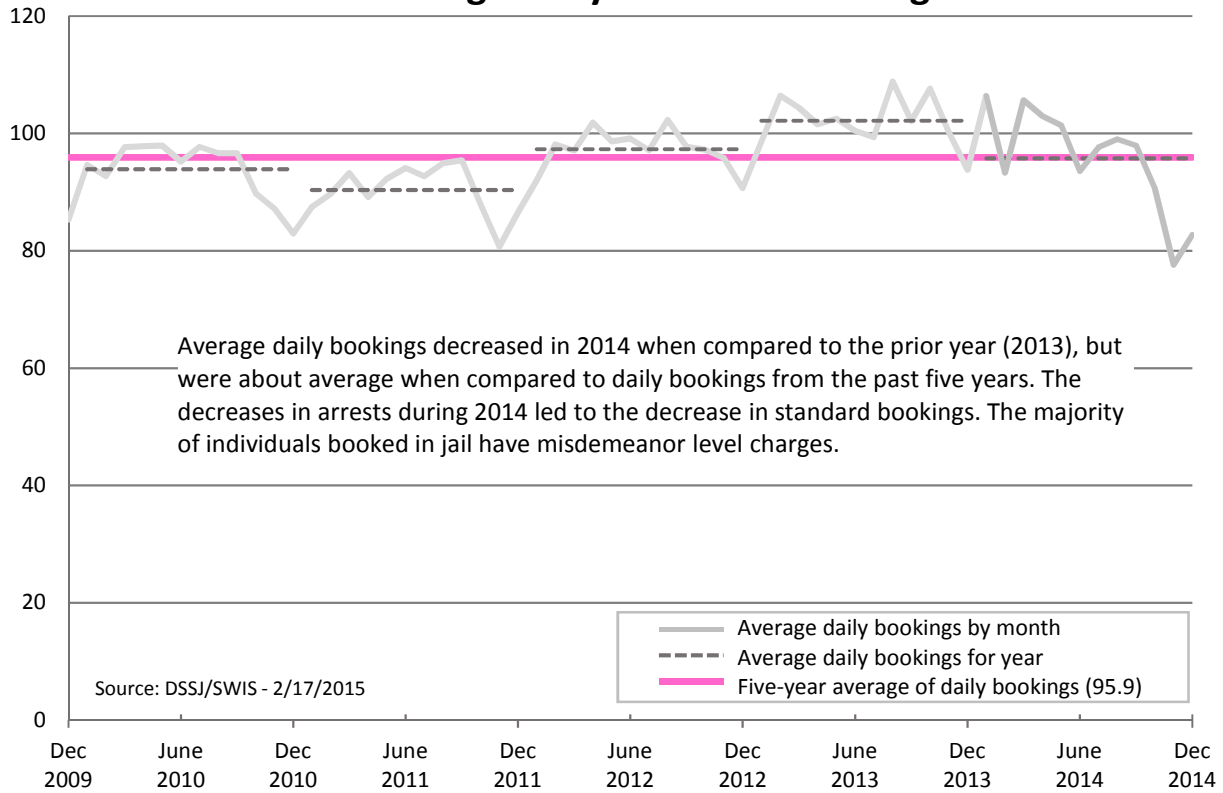


### Average Daily Misdemeanor Arrests



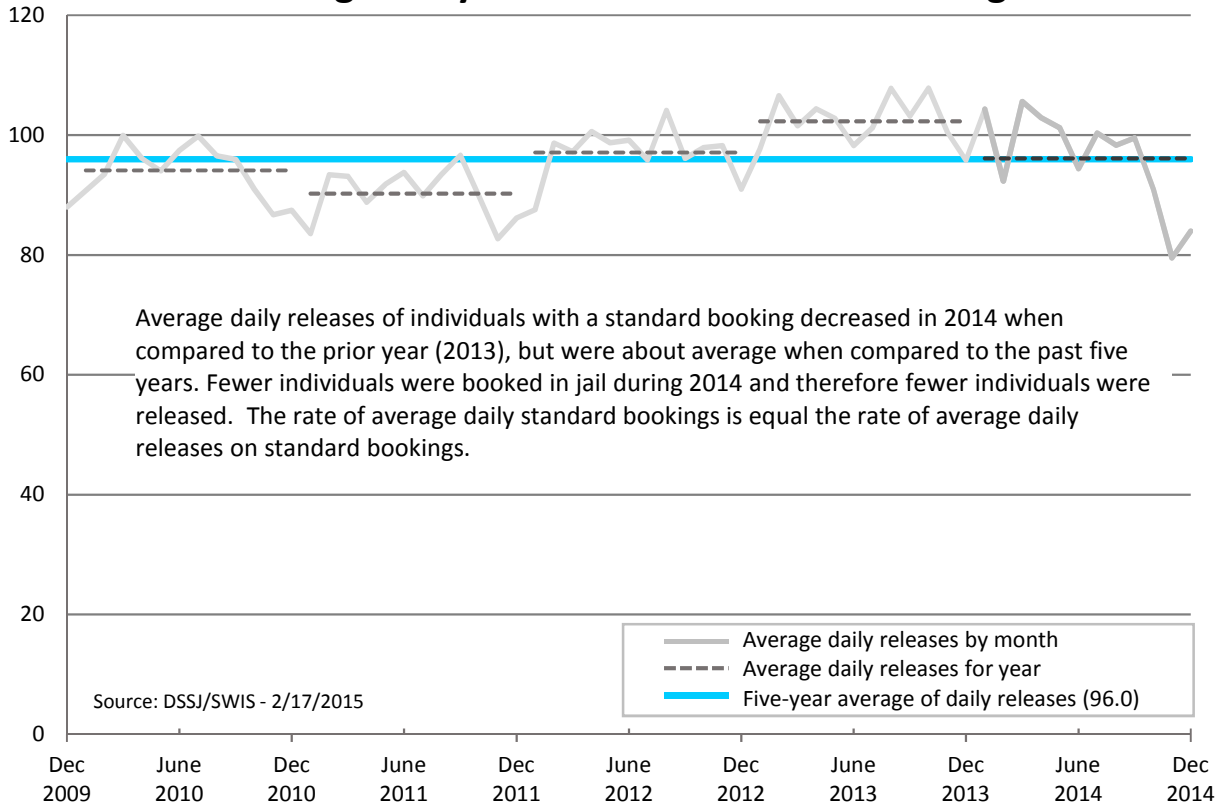
# Jail Bookings

## Average Daily Standard Bookings

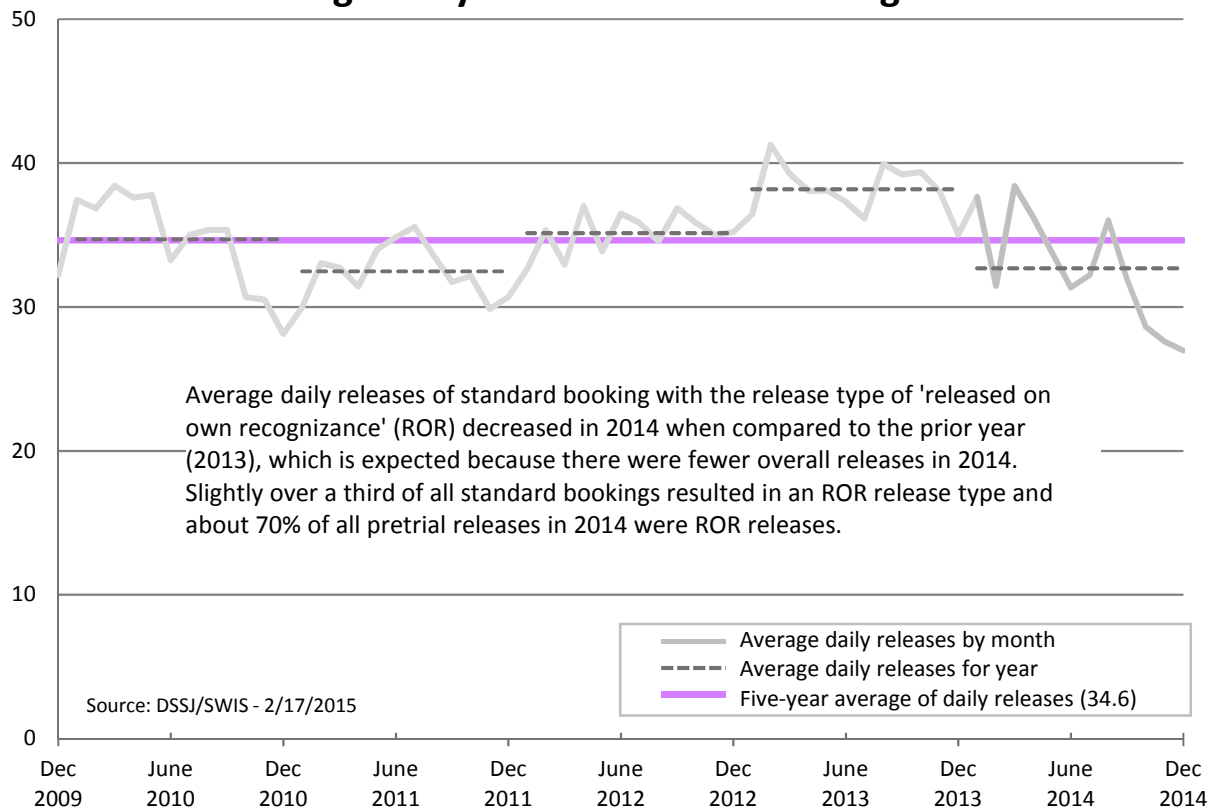


Average Daily Bookings by Charge Level and Type	Sparkline	2010	2011	2012	2013	2014	Five Year Average
<b>Felony</b>		20.4	21.0	22.8	23.2	22.5	22.0
Alcohol & Drugs		7.5	7.7	8.7	9.8	9.0	8.5
Behavioral		1.3	1.3	1.5	1.5	1.5	1.4
Other Charge		0.8	0.8	0.9	1.0	0.9	0.9
Person (includes DUII)		4.4	4.2	4.3	3.9	3.9	4.1
Property		6.2	6.6	7.2	6.7	6.8	6.7
Vehicle		0.4	0.3	0.3	0.3	0.4	0.3
<b>Misdemeanor</b>		44.8	41.5	44.2	46.8	42.5	44.0
Alcohol & Drugs		1.2	0.8	0.7	0.6	0.4	0.7
Behavioral		9.1	9.2	10.0	10.5	9.1	9.6
Local		2.5	2.5	2.4	2.0	1.0	2.1
Other Charge		2.1	1.5	1.7	2.1	2.3	2.0
Person (includes DUII)		14.7	14.2	14.9	14.2	13.1	14.2
Property		12.9	11.6	12.5	15.4	14.7	13.4
Vehicle		2.2	1.8	1.9	2.1	2.0	2.0
<b>Other Charge Levels</b>		0.5	0.6	0.5	0.5	0.6	0.5
<b>Probation Violations</b>		9.8	9.8	10.6	11.2	12.0	10.7
<b>Hold</b>		18.4	17.5	19.2	20.4	18.1	18.7
<b>Total Bookings</b>		<b>93.9</b>	<b>90.4</b>	<b>97.3</b>	<b>102.1</b>	<b>95.8</b>	<b>95.9</b>

### Average Daily Releases of Standard Bookings

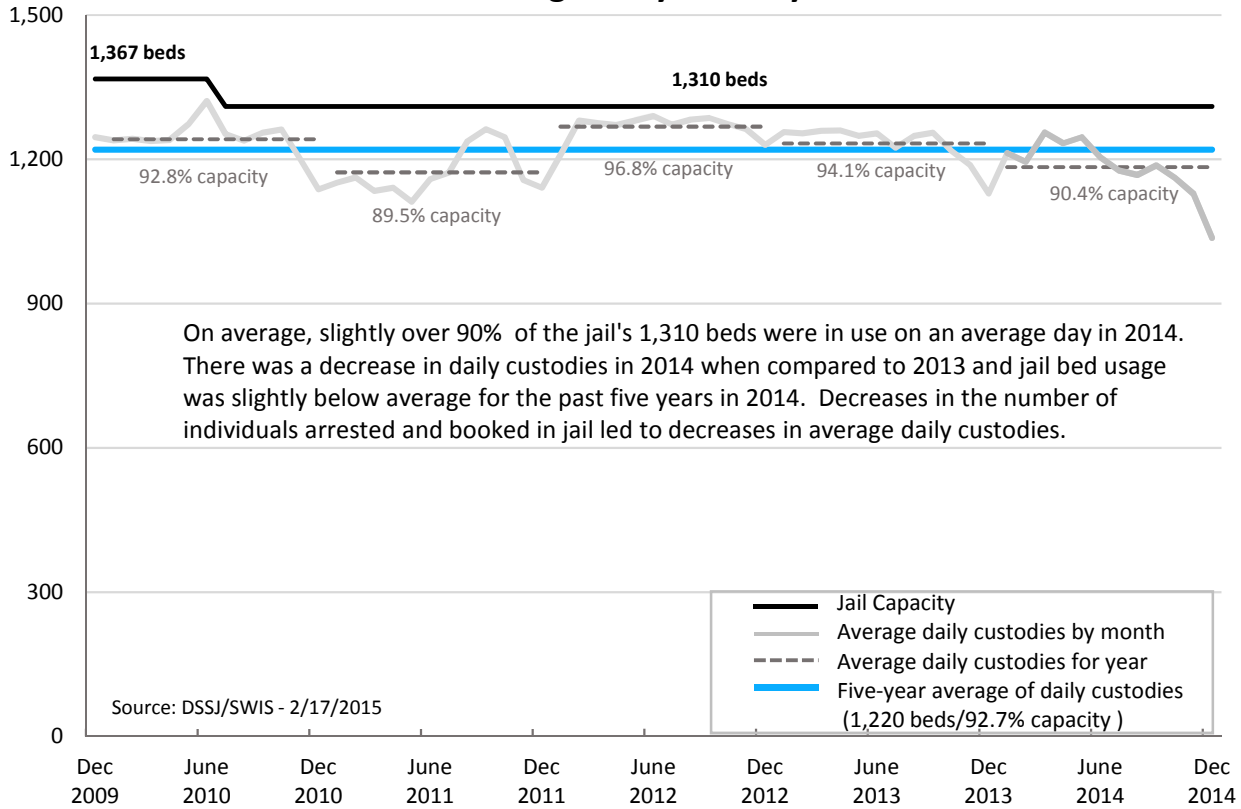


### Average Daily Releases on Own Recognizance

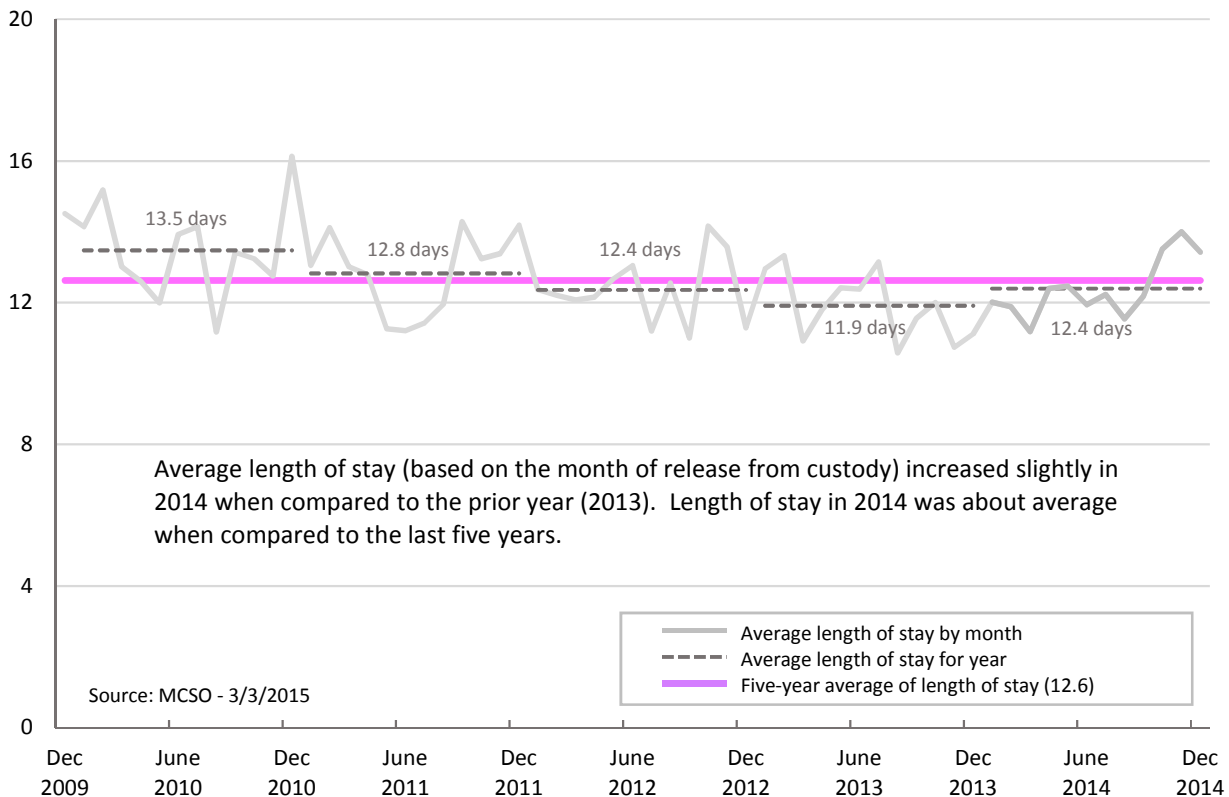




### Average Daily Custody



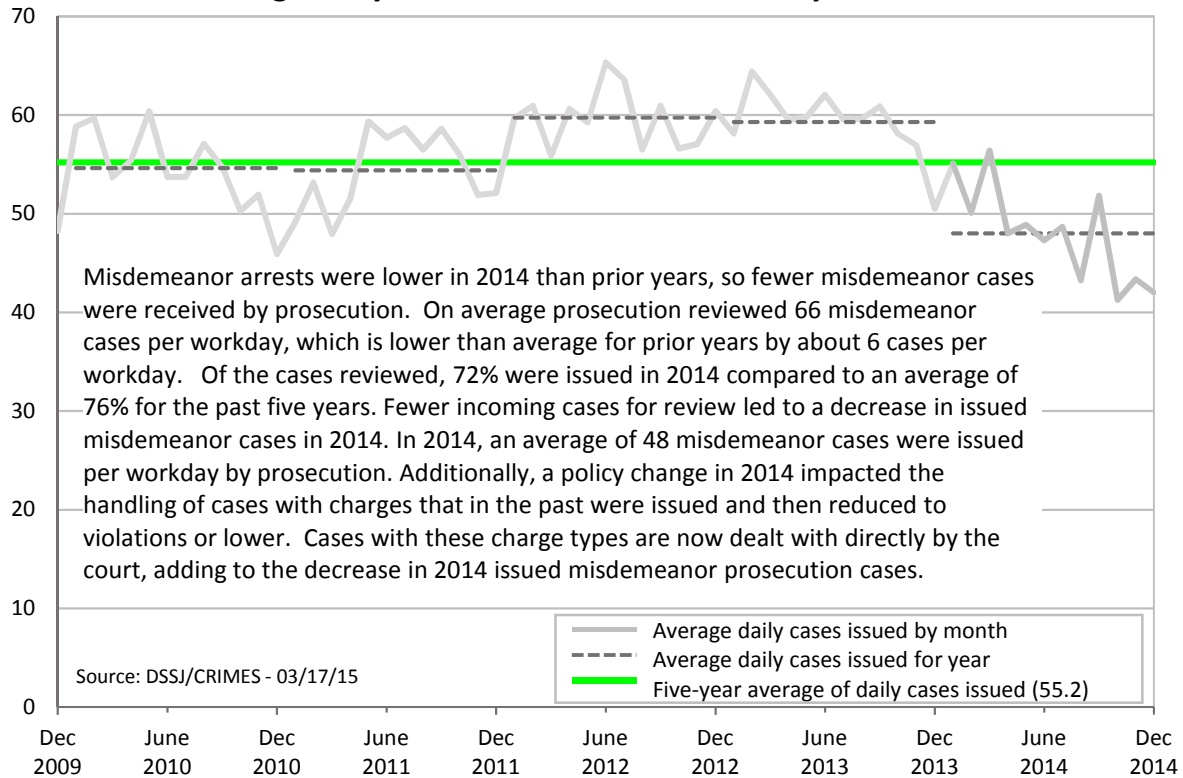
### Average Length of Stay (Days)



## Prosecution Cases

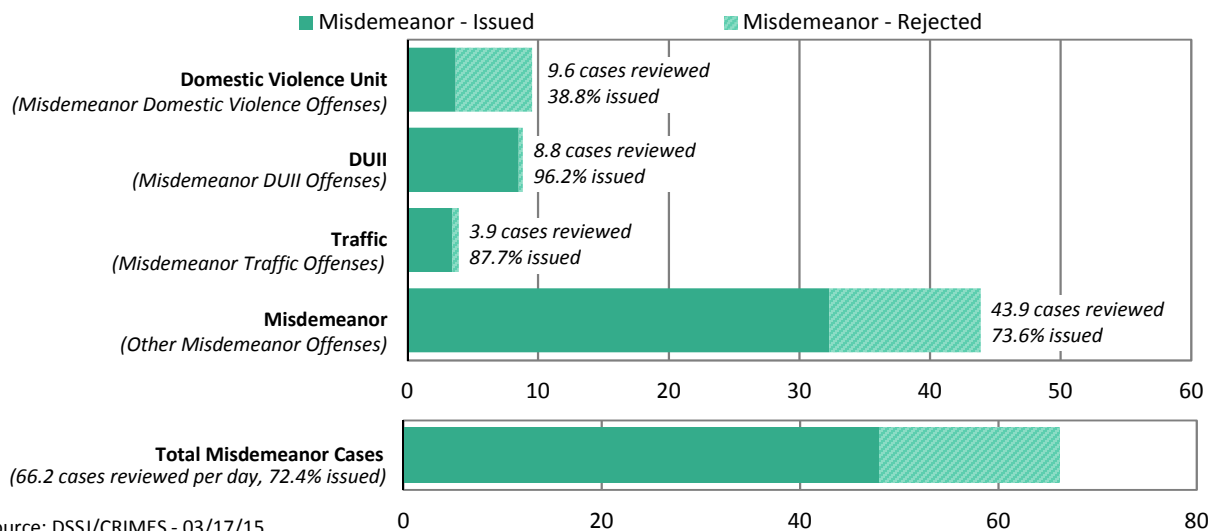
Criminal cases are presented to the DA's Office after investigation by law enforcement. The DA's office then reviews the cases and determines to either issue the cases for prosecution or not pursue the cases for prosecution (reject). Cases that are initially rejected can be re-reviewed after follow-up and issued at a later date. Charge level is determined by court assignment; misdemeanor court assignment may also include charges lower than a misdemeanor (violation, infraction, etc.). Daily averages are calculated using the number of workdays (excluding weekends, holidays, etc.).

### Average Daily Misdemeanor Cases Issued by Prosecution

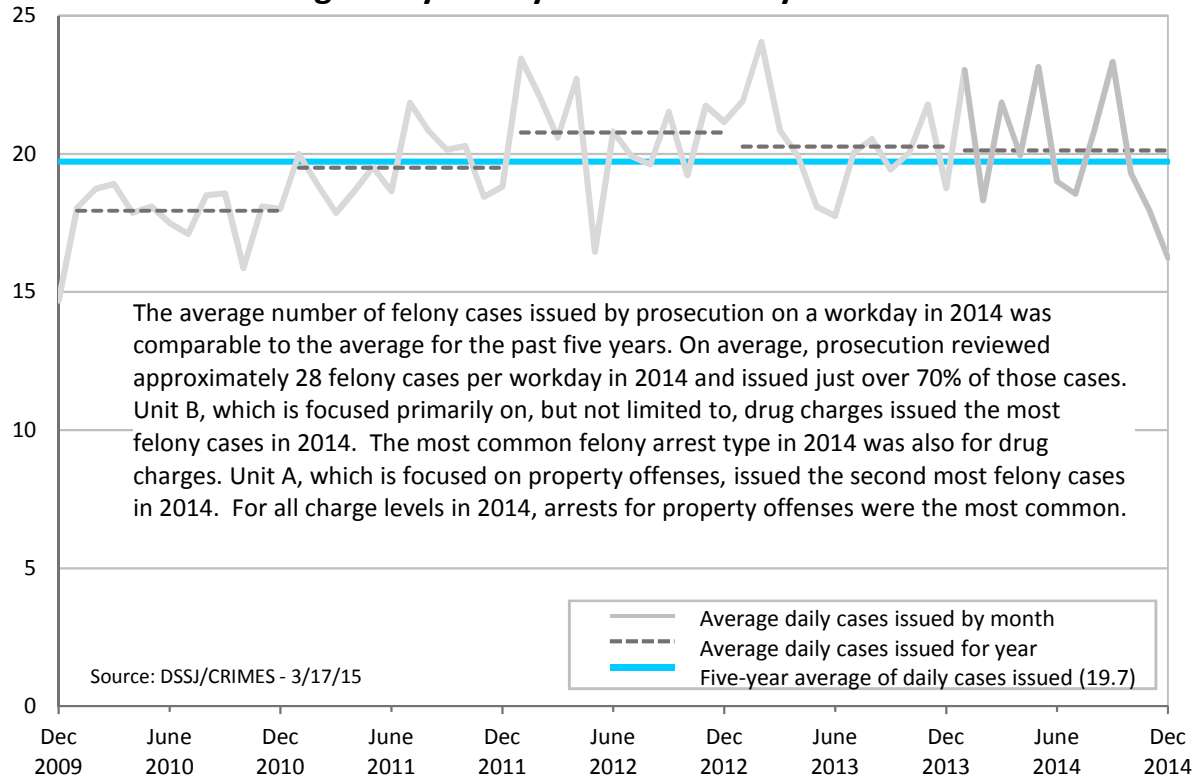


Cases are assigned to specialized units within the DA's Office for review. Each unit focuses on, but is not limited to, specific offense types. Charge level on cases was determined by court assignment

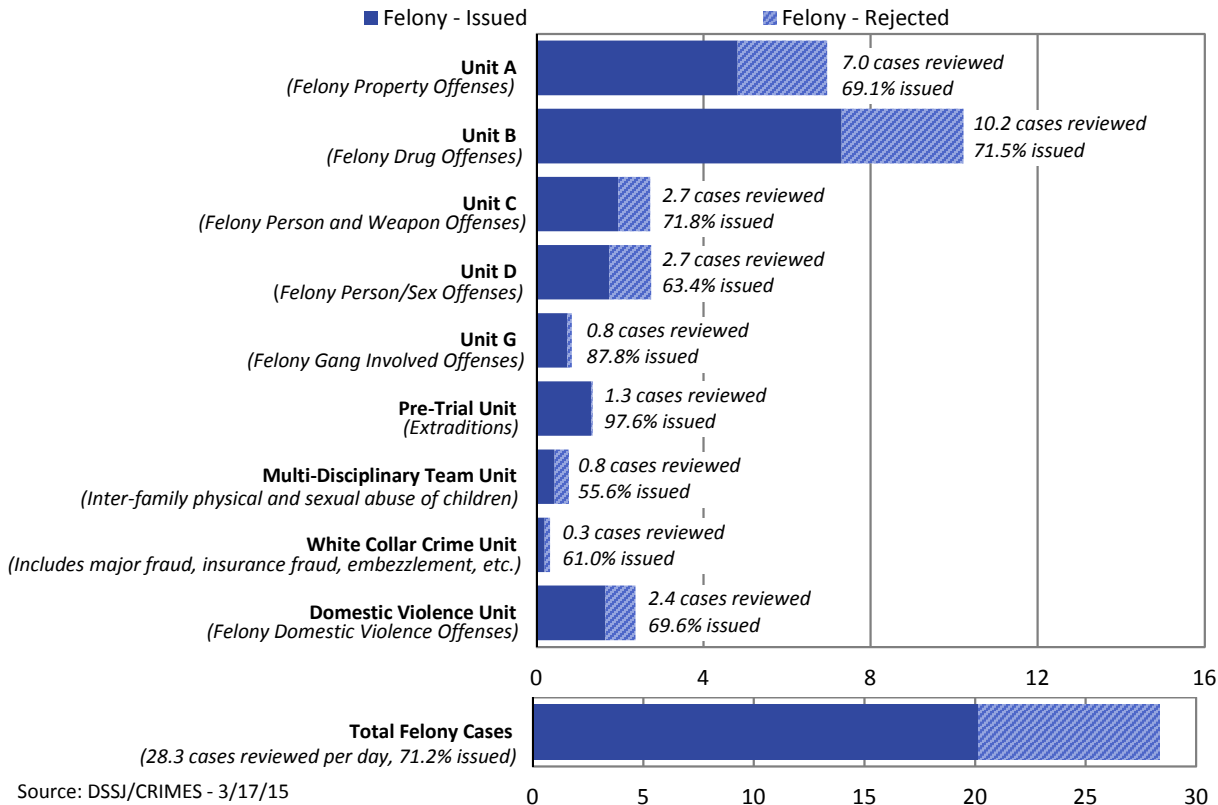
### Average Daily Misdemeanor Case Review Outcome by DA Unit - 2014



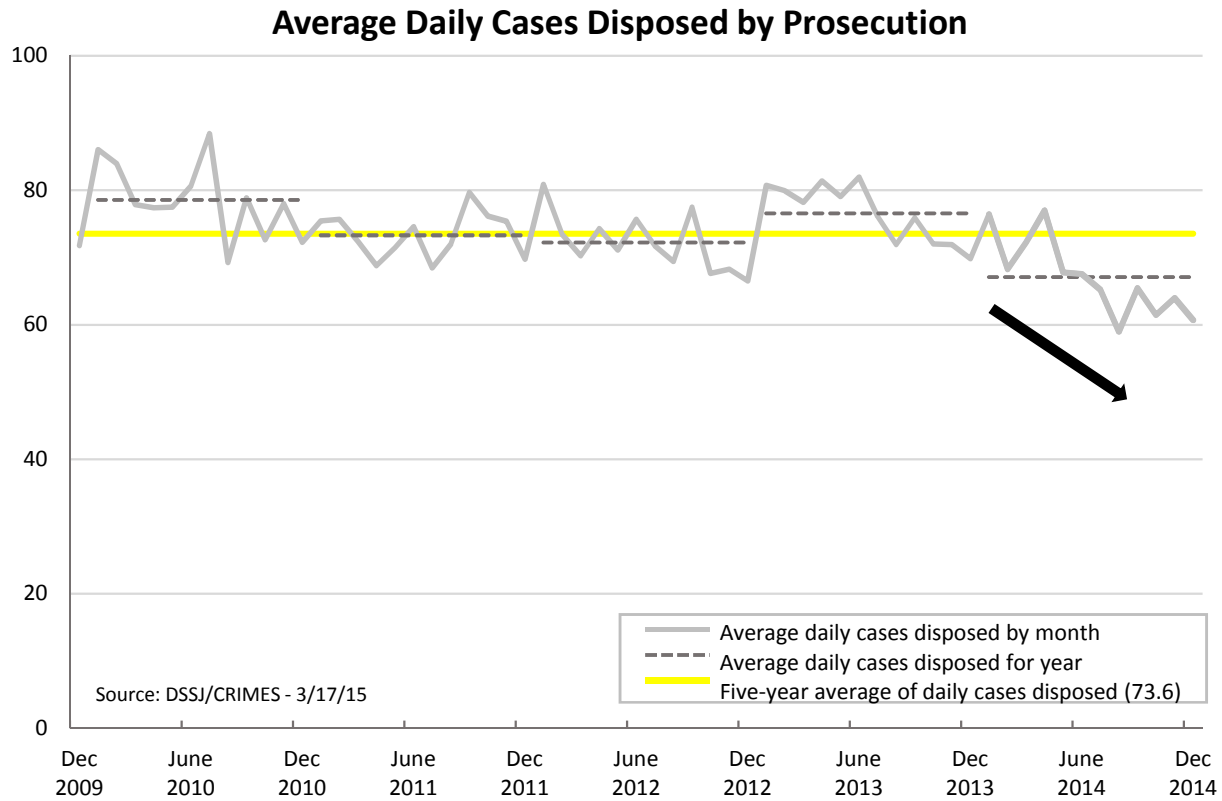
### Average Daily Felony Cases Issued by Prosecution



### Average Daily Felony Case Review Outcome by DA Unit - 2014



A case is disposed when a final decision on the outcome of all charges on the case is determined. Possible outcomes include conviction, dismissals due to successful completion of diversion or community service, dismissal for other reasons, or a not guilty finding/judgment of acquittal. Charge level is based on primary charge.



On average, over the past five years (2010-2014), there were 73.6 cases disposed by prosecution per workday. In 2014, prosecution disposed an average of 67.1 cases per workday. As expected, because fewer misdemeanor cases were issued in 2014 than prior years, fewer total cases were disposed. Prosecution disposes approximately the same number of cases per day (67.1) as are issued (68.1).

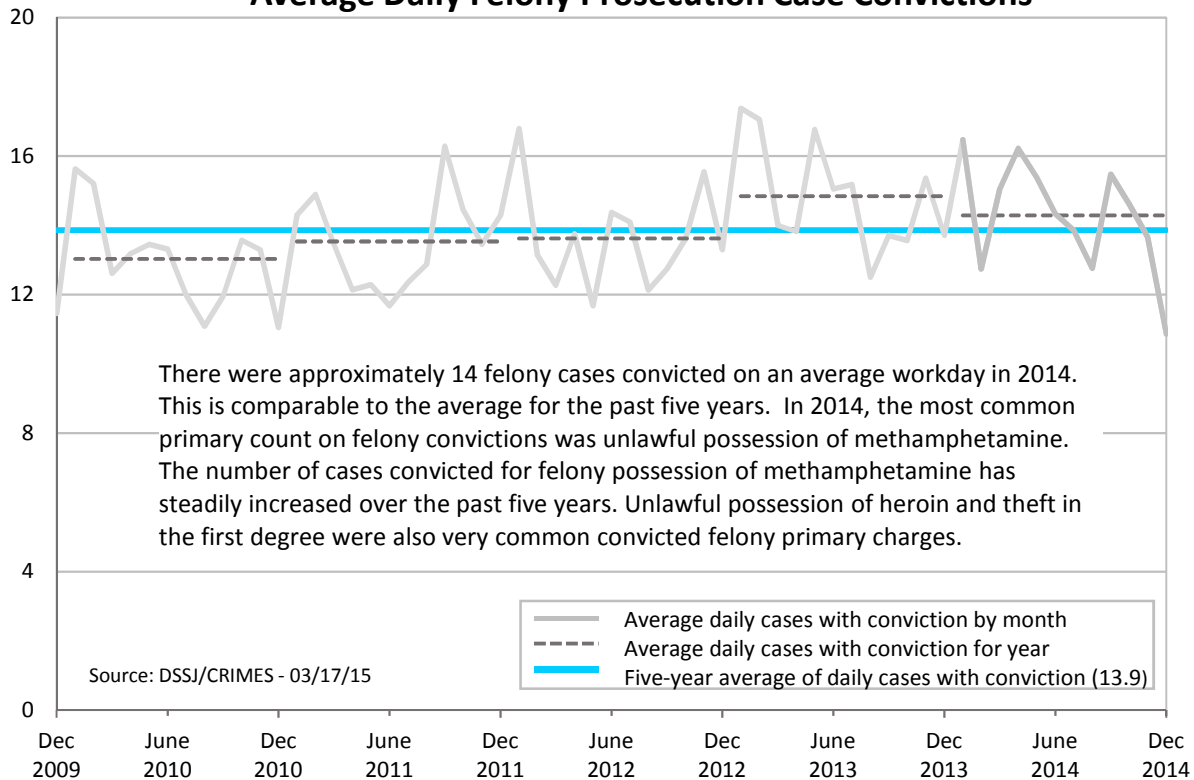
#### Of the disposed case in 2014:

- 28.6% had a felony primary charge
- 68.5% had a misdemeanor primary charge
- 2.9% had a primary charge lower than a misdemeanor (violation, infraction, etc.)
  
- 60.0% of cases resulted in convictions
- 18.8% of cases were dismissed due to successful completion of a diversion program or community service
- 20.4% of cases were dismissed for other reasons
- 0.8% resulted in a finding of not guilty or an acquittal

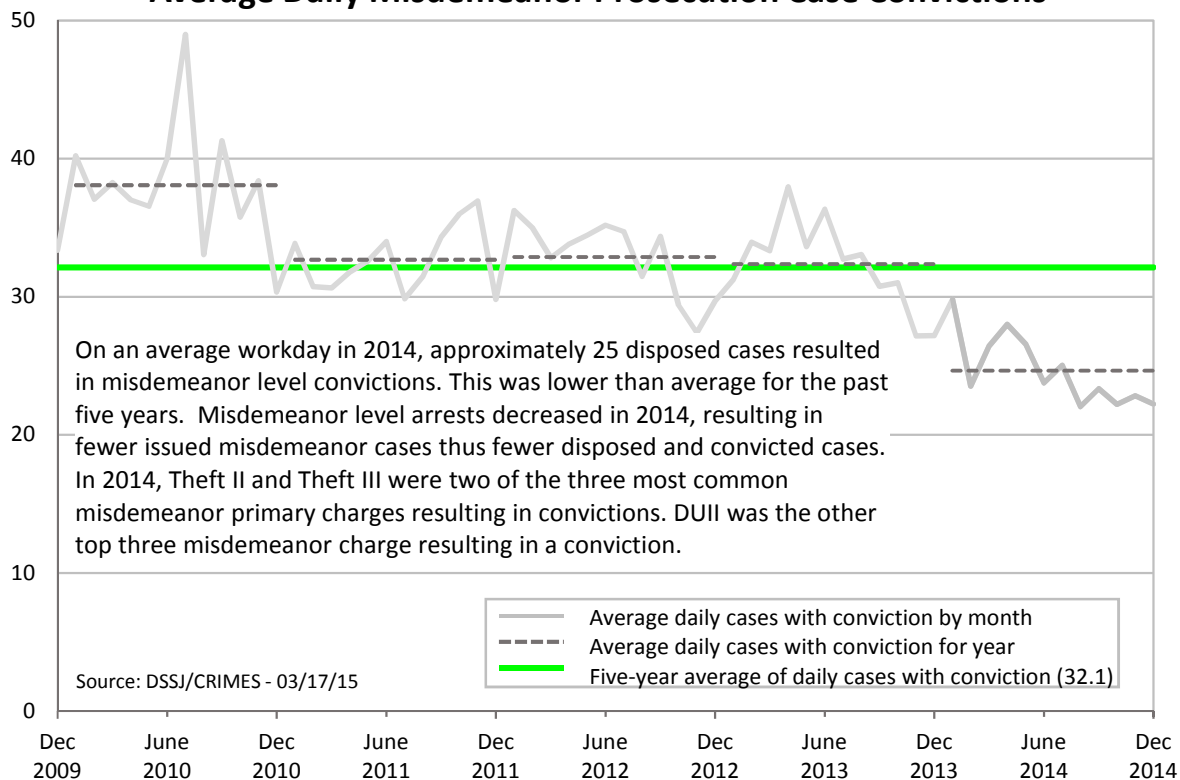
Only 2% of disposed cases went to trial. Of these cases, 80% resulted in a guilty finding.

The charge level for cases resulting in a conviction is based off the charge level of the primary convicted count on the case. In addition to felony and misdemeanor convictions, approximately 3% of convicted cases had a primary convicted count lower than a misdemeanor (violation, infraction, etc.).

### Average Daily Felony Prosecution Case Convictions

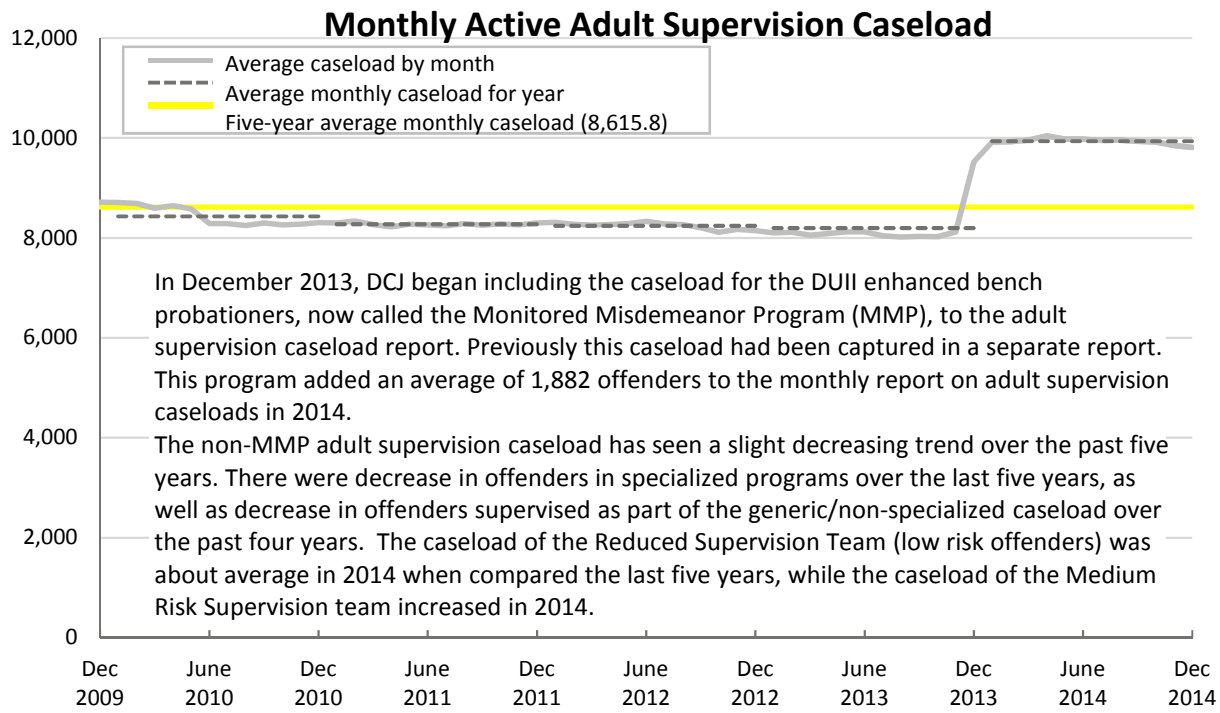


### Average Daily Misdemeanor Prosecution Case Convictions



## Supervision Caseload

The Department of Community Justice provides a monthly snapshot of the active caseloads for the Adult Service Division. The snapshot is based on the active cases on the last day of the month and includes felony and misdemeanor offenders



The Reduced Supervision Team (formally Casebank or Low Limited Response Team) supervises low risk offenders. The Monitored Misdemeanor Program is for DUII offenders. The Medium Risk Supervision Team was created in early 2010. DCJ also has specialized programs which include the African-American Program, Domestic Violence Unit, Gang, Gender Specific, Mentally Ill Offender Unit, Multnomah County Justice Reinvestment Program (MCJRP), Programs Unit, and Sex Offender caseloads. Offenders were placed on specialized MCJRP supervision beginning in late 2014. Generic/non-specialized cases includes all other DCJ Adult Supervision Division caseloads.

Average Monthly Supervision Caseload by Program	Sparkline	2010	2011	2012	2013	2014	Five Year Average
<b>Specialized Programs</b>		3,282.2	3,004.4	2,974.8	2,823.8	2,827.8	2,982.6
<i>African-American Program</i>		108.1	105.8	111.9	110.7	109.2	109.1
<i>Domestic Violence Unit</i>		910.3	869.7	864.4	859.9	812.9	863.5
<i>Gang Supervision</i>		265.6	252.1	260.6	229.1	198.3	241.1
<i>Gender Specific Supervision (women)</i>		176.7	163.8	146.5	122.1	113.5	144.5
<i>Level 1 Supervision (Very High Risk)</i>		101.7	95.8	119.7	164.7	261.3	148.6
<i>Mentally Ill Offender Unit</i>		209.1	200.2	227.8	224.1	219.0	216.0
<i>MCJRP</i>						63.0*	
<i>Programs Unit (DISP, REC, STTL, etc.)</i>		561.2	306.8	273.5	200.3	198.3	308.0
<i>Sex Offender Supervision</i>		949.6	1,010.3	970.4	912.9	905.3	949.7
<b>Reduced Supervision Team (Low Risk)</b>		2,216.2	2,163.7	2,255.6	2,346.4	2,257.2	2,247.8
<b>Monitored Misdemeanor Program</b>					1421.0*	1,882.8	
<b>Medium Risk Supervision Team</b>		577.3	597.0	613.2	613.4	811.1	642.4
<b>Generic/Non-specialized</b>		2,356.3	2,507.9	2,398.5	2,294.6	2,156.3	2,342.7
<b>Total Adult Supervision Caseload</b>		<b>8,432.0</b>	<b>8,273.0</b>	<b>8,242.1</b>	<b>8,196.6</b>	<b>9,935.1</b>	<b>8,615.8</b>

\* Count of caseload at the end of December only. Caseloads not reflected in total specialized or total supervision caseload.  
 \*\* The specialized supervision programs overseen by the Programs Unit have changed over time. Past programs included the High Risk Drug Unit (Clean Court) and DUII supervision.

