



Local Public Safety Coordinating Council of Multnomah County

Public Safety Trends Summary

The Public Safety Trends document provides an executive level summary of operational data for many of the decision points and agencies in Multnomah County's public safety system. The statistics in the Report are compiled from the Decision Support System – Justice (DSSJ) data warehouse.

September 2014

Dear Reader,

Welcome to the Public Safety Trends Summary Report produced by Multnomah County's Local Public Safety Coordinating Council (LPSCC). The purpose of this report is to provide an executive level summary of operational data for many of the decision points in the County's Public Safety System for the Council's Executive Committee, partner agency staff, and members of the public.

The statistics detailed in this report are sourced from the County's Decision Support System – Justice data warehouse (DSSJ). The data contained in DSSJ is sourced from the host agency systems and is regularly audited for accuracy. Additionally, the data presented in this report is regularly reviewed by the owner agency analysts for consistency and clarity.

The Report provides both long-term trend data and short-term descriptive statistics. The long-term trends section provides a description of how certain types of events, case types, and charge levels have changed over time. The short-term trends section provides a more detailed description of the data presented in the long-term trend section. Measures of reported Incidents, Arrest, Disposition, and Sentencing are reported at the case unit level. Measures for Booking and Custody are reported at the person level.

The Public Safety Trends Report is produced on a regular basis and serves as a starting point for broader investigations of trends in local public safety. Frequently, the Report will contain a special analysis section providing a systems perspective of specific areas in the local public safety system.

Lauren Brown
LPSCC Analyst

Items of Note and Updates

Reported Part 1 property crime during January 1, 2014 – September 30, 2014 in Multnomah County has increased when compared to the same time period in 2013. This increase has been driven by increases in larcenies, specifically thefts from autos. On average, there have been five more thefts from autos per day in 2014 than 2013. In September 2014 there was a big increase in theft from auto, with an average of ten more incidents reported per day than in August 2014.

There was a slight increase in average daily felony bookings in September 2014 when compared to the prior month (August 2014) and August of the prior year (2013).

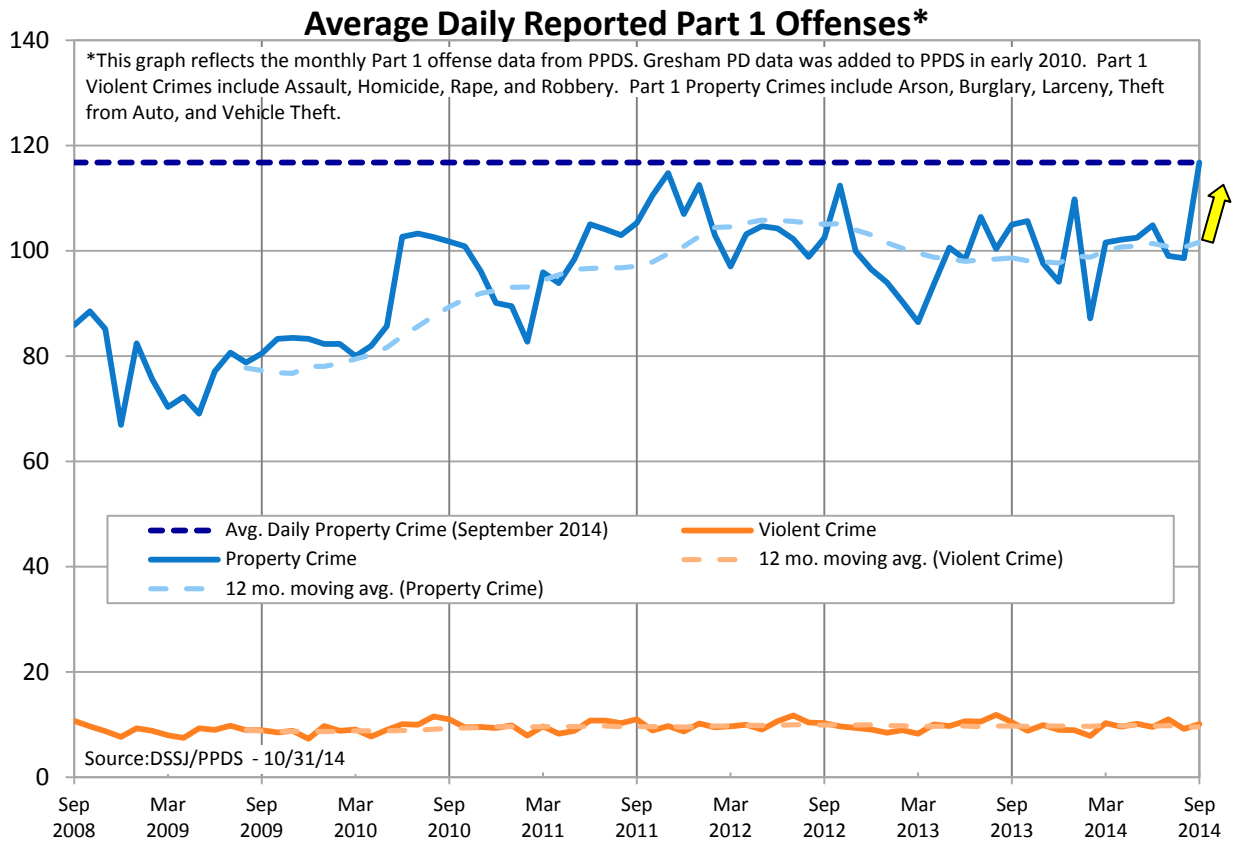
Increases were seen in the number of both felony and misdemeanor cases reviewed and issued by prosecution in September 2014 when compared to prior months. Increases were also seen in felony convictions in September 2014 when compared to prior months.

The process of integrating data from the Multnomah County Circuit Court's new Odyssey (eCourt) system into DSSJ is ongoing. A few regularly published charts created using Court data are not included in this report due to the transition.



Contact Lauren Brown with questions or concerns lauren.brown@multco.us
Current and past editions of this report are available at www.lpscc.org





There was one reported homicide in September 2014. An increase in average daily reported larcenies, specifically thefts from autos, during September 2014 led to an overall increase in reported Part 1 property crime in September when compared to August 2014 and September 2013. Year to date, the average daily reported offenses are up in 2014 when compared to 2013. This increase is also driven by increases in reported Part 1 property crime, specifically larcenies – theft from auto.

Average Daily Reported Part 1 Offense by Type	September 2014	August 2014	September 2013	YTD 2014	YTD 2013
Part 1 Violent Crime	10.1	9.2	10.5	9.7	9.9
Homicide	0.03	0.03	0.1	0.1	0.1
Rape	0.9	0.8	1.0	0.8	0.8
Robbery	2.9	2.8	3.5	2.8	3.1
Assault	6.3	5.6	5.9	6.0	5.9
Part 1 Property Crime	↑116.8	98.6	105.0	↑102.6	97.3
Burglary	14.5	13.0	14.2	13.5	13.3
<i>Residential</i>	8.7	7.9	8.1	7.5	7.9
<i>Other</i>	5.9	5.2	6.1	6.0	5.4
Larceny	↑90.2	74.9	78.9	↑77.7	72.6
<i>Shoplifting</i>	14.4	13.9	15.0	14.4	14.0
<i>Theft from Auto</i>	↑39.3	28.8	27.1	↑31.5	26.0
<i>Other</i>	36.5	32.3	36.9	31.7	32.6
Motor Vehicle Theft	11.8	10.3	11.2	10.9	10.8
Arson	0.2	0.4	0.6	0.5	0.6
Total Reported Part 1 Crime	↑126.9	107.8	115.5	↑112.3	107.2

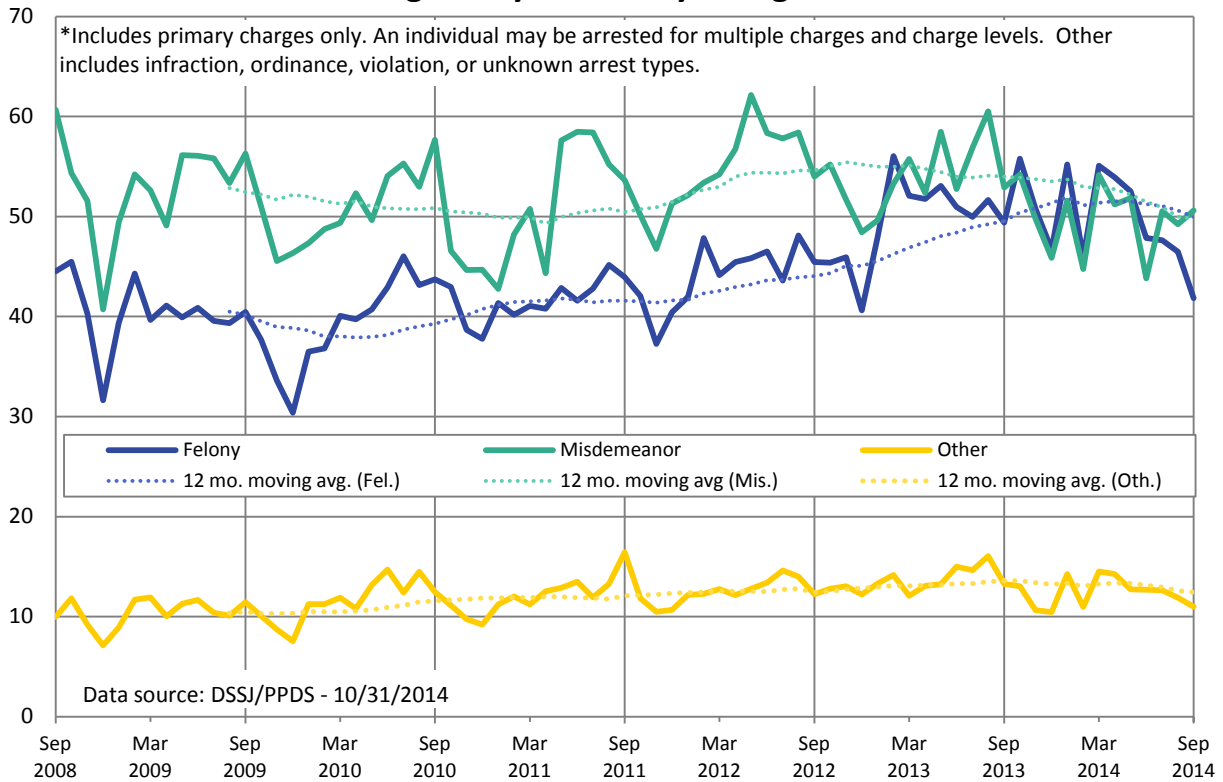
*Reported incident data was pulled on 10/31/14. Due to records entry lag, the counts for the current month may be lower than the true total. Year to date (YTD) data is as of September 30th.



Contact Lauren Brown with questions or concerns lauren.brown@multco.us
 Current and past editions of this report are available at www.lpscc.org



Average Daily Arrests by Charge Level*



Total average daily arrests in September 2014 were considerably lower than September 2013. Felony arrests were lower in September 2014 than August 2014, but misdemeanor arrests remained stable.

Average Daily Arrests by Charge Level and Type	September 2014	August 2014	September 2013	YTD 2014	YTD 2013
Felony	↓41.8	46.5	49.4	49.7	51.4
Alcohol & Drugs	8.3	9.8	10.5	10.3	12.0
Behavioral	0.8	0.8	0.9	0.9	1.0
Other Charge	0.3	0.4	0.1	0.2	0.2
Fugitive Hold (Warrants)	26.1	29.3	30.8	31.0	29.8
Person (includes DUII)	1.5	1.3	1.8	1.5	1.8
Property	4.8	4.9	5.4	5.8	6.5
Vehicle	0.0	0.0	0.0	0.0	0.1
Misdemeanor	50.6	49.3	52.9	↓49.8	54.7
Alcohol & Drugs	0.0	0.0	0.0	0.0	0.1
Behavioral	7.5	7.3	8.3	7.9	9.0
Local	11.0	9.2	9.1	7.9	9.6
Other Charge	1.4	1.3	1.8	1.5	1.4
Person (includes DUII)	12.3	13.3	13.4	13.0	14.6
Property	17.8	17.8	19.5	18.9	19.2
Vehicle	0.7	0.4	0.8	0.7	0.8
Other Charge Levels	11.0	11.9	13.3	12.8	13.9
Total Arrests	↓103.4	107.7	115.6	↓112.4	120.0

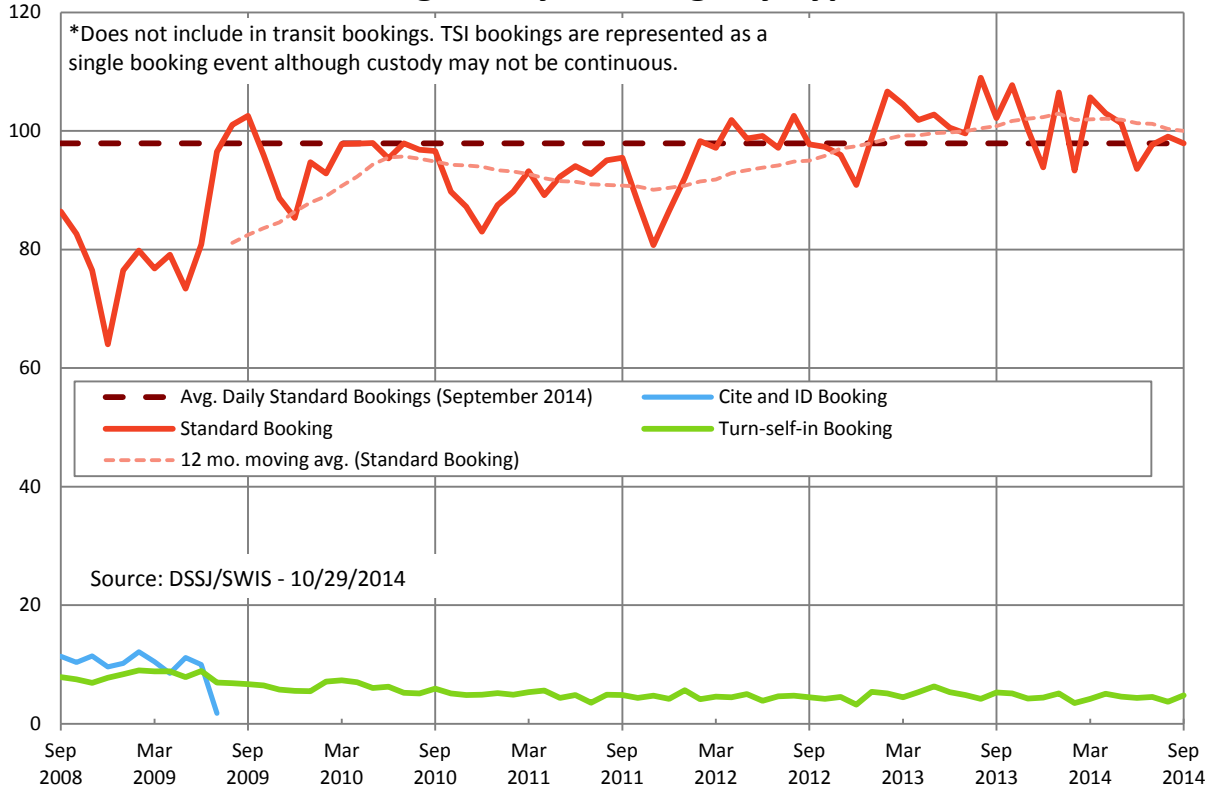
*Arrest data was pulled on 10/31/14. Due to records entry lag, the counts for the current month may be lower than the true total. Year to date (YTD) data is as of September 30th.



Contact Lauren Brown with questions or concerns lauren.brown@multco.us
 Current and past editions of this report are available at www.lpscc.org



Average Daily Bookings by Type*



Average daily standard bookings decreased slightly in September 2014 when compared to August 2014. A small increase was seen in felony bookings, specifically those related to charges for person and property crimes in September 2014 when compared to August 2014 and September of 2013. Year to date, average daily bookings are down slightly in 2014 when compared to 2013.

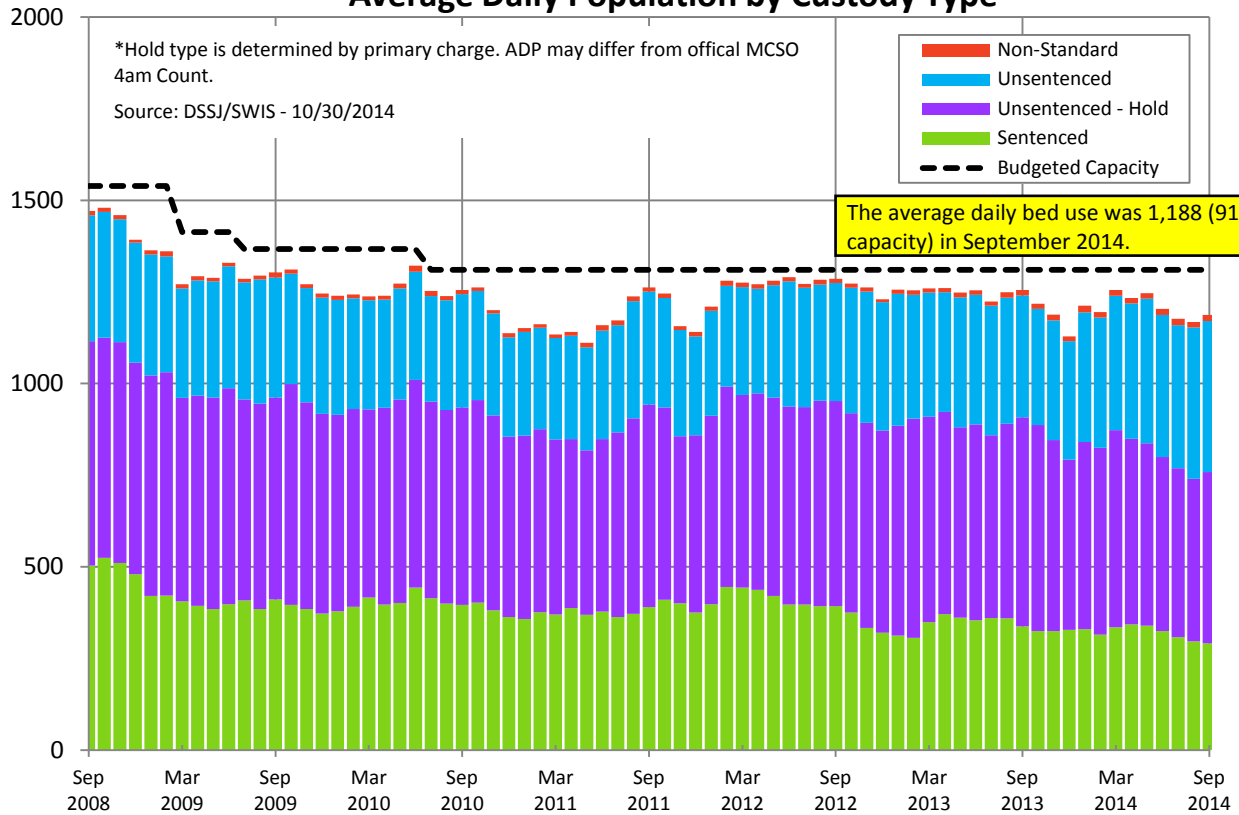
Average Daily Bookings by Charge Level and Type	September 2014	August 2014	September 2013	YTD 2014	YTD 2013
Felony	↑24.3	22.9	22.6	23.7	23.3
Alcohol & Drugs	9.4	9.3	9.7	9.7	9.7
Behavioral	1.8	1.7	1.3	1.5	1.5
Other Charge	1.0	0.9	1.1	1.0	1.0
Person (includes DUII)	↑4.2	3.5	3.6	4.0	4.0
Property	↑7.5	6.9	6.6	7.0	6.7
Vehicle	0.4	0.5	0.2	0.4	0.3
Misdemeanor	43.4	44.9	47.7	↓44.3	47.1
Alcohol & Drugs	0.4	0.6	0.2	0.5	0.5
Behavioral	8.7	9.4	10.9	9.6	10.8
Local	1.0	0.7	2.1	1.0	2.0
Other Charge	2.5	2.3	2.2	2.4	2.1
Person (includes DUII)	14.5	14.3	13.5	13.4	14.4
Property	14.4	15.7	16.8	15.3	15.1
Vehicle	1.8	1.8	2.0	2.0	2.1
Other Charge Levels	0.7	0.4	0.6	0.6	0.5
Probation Violations	12.6	13.3	10.6	12.2	11.2
Holds	17.0	17.5	20.7	19.1	20.6
Total Standard Bookings	97.9	99.0	102.1	↓99.9	102.7



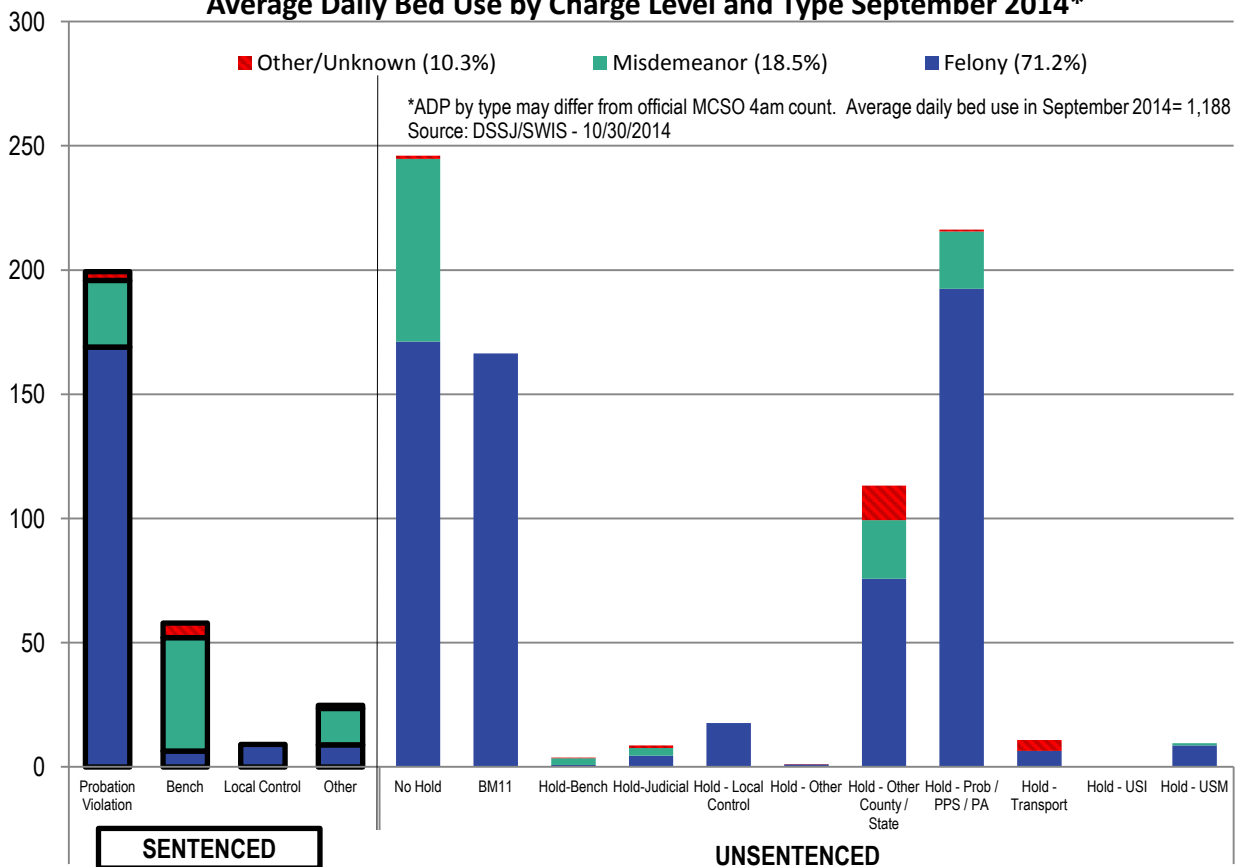
Contact Lauren Brown with questions or concerns lauren.brown@multco.us
 Current and past editions of this report are available at www.lpscc.org



Average Daily Population by Custody Type*



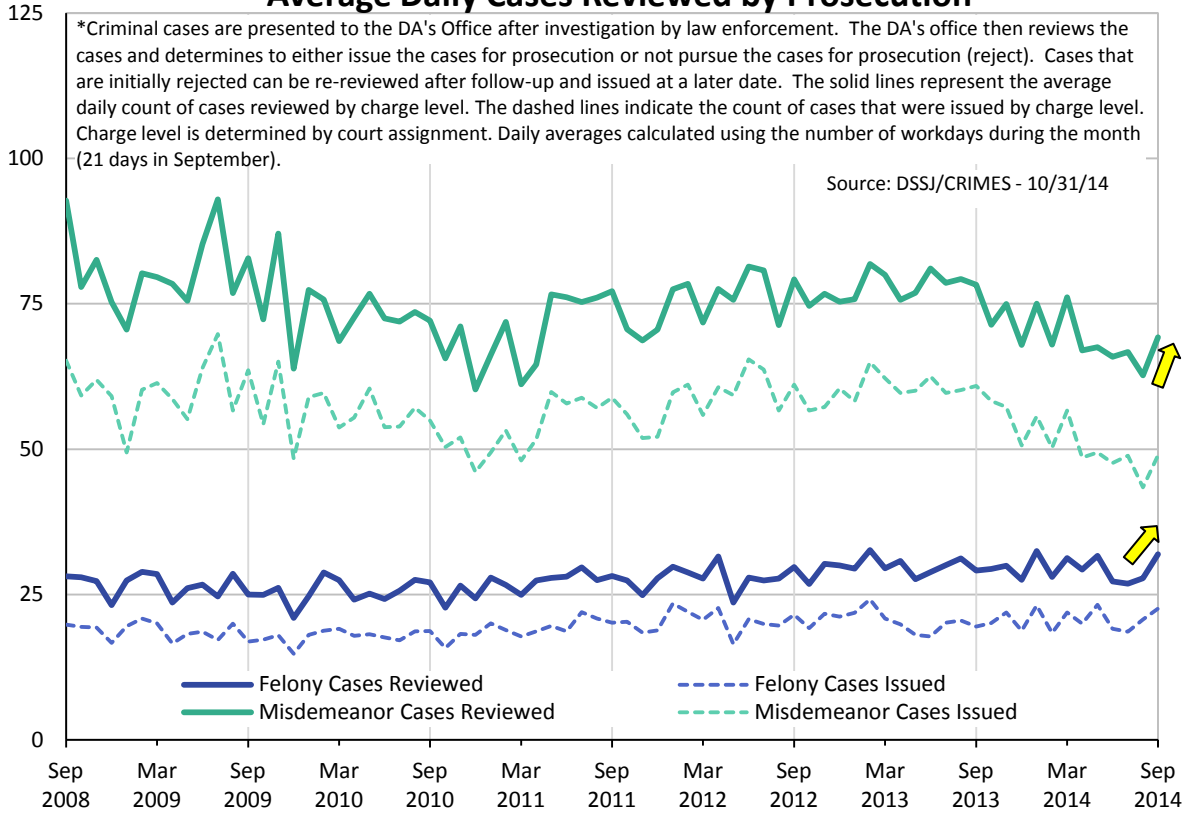
Average Daily Bed Use by Charge Level and Type September 2014*



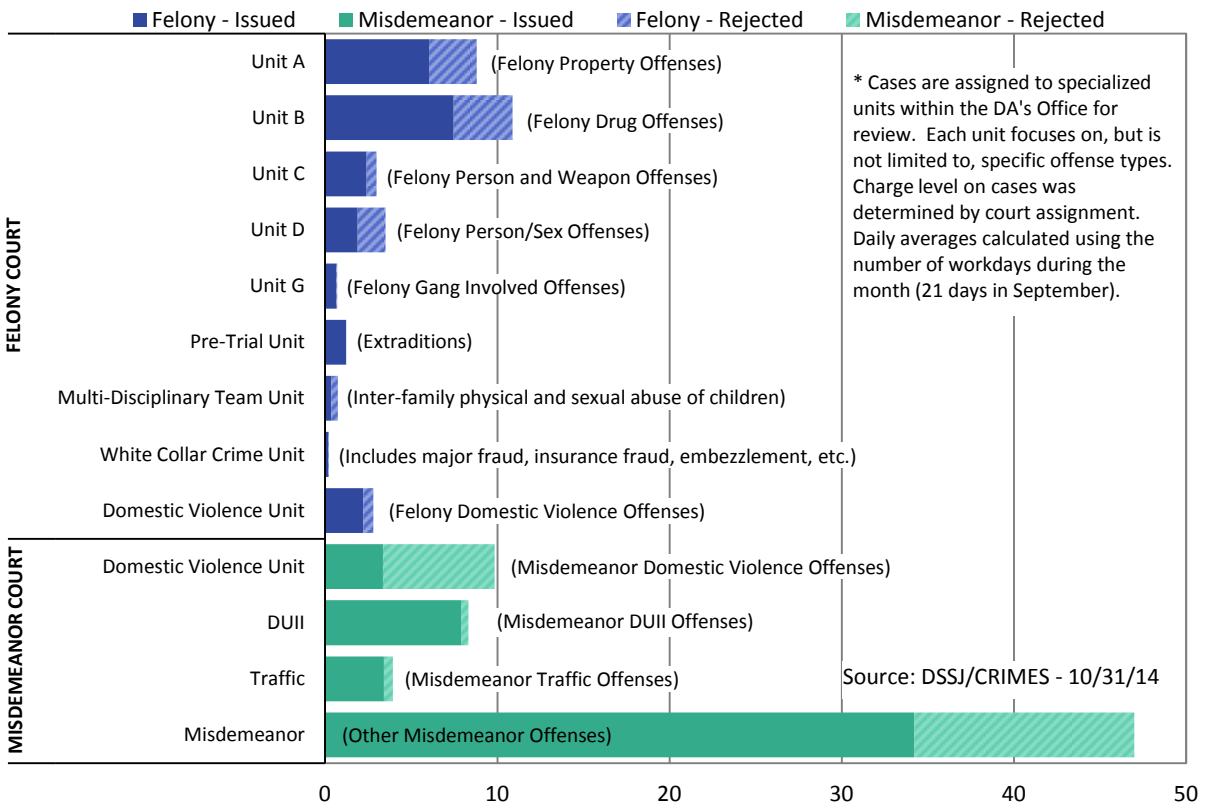
Contact Lauren Brown with questions or concerns lauren.brown@multco.us
 Current and past editions of this report are available at www.lpscc.org



Average Daily Cases Reviewed by Prosecution



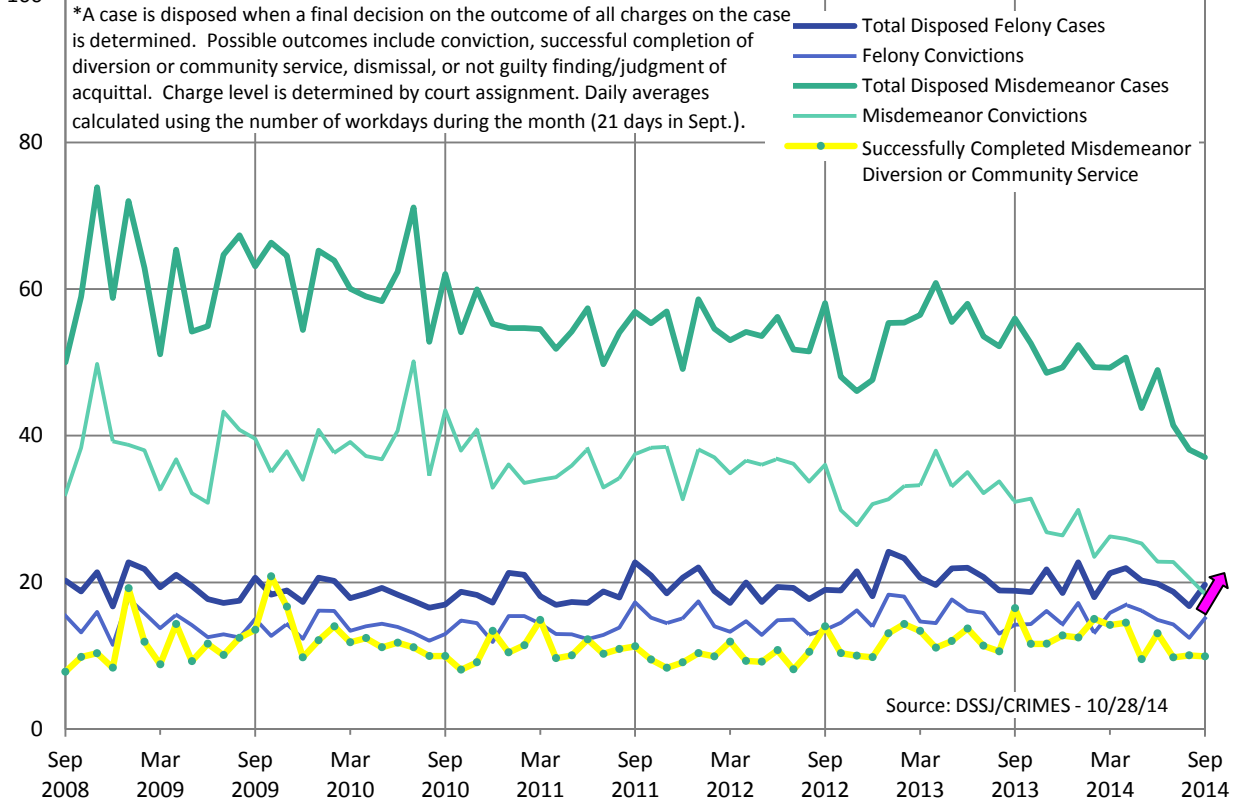
Average Daily Case Review Outcome by DA Unit - September 2014



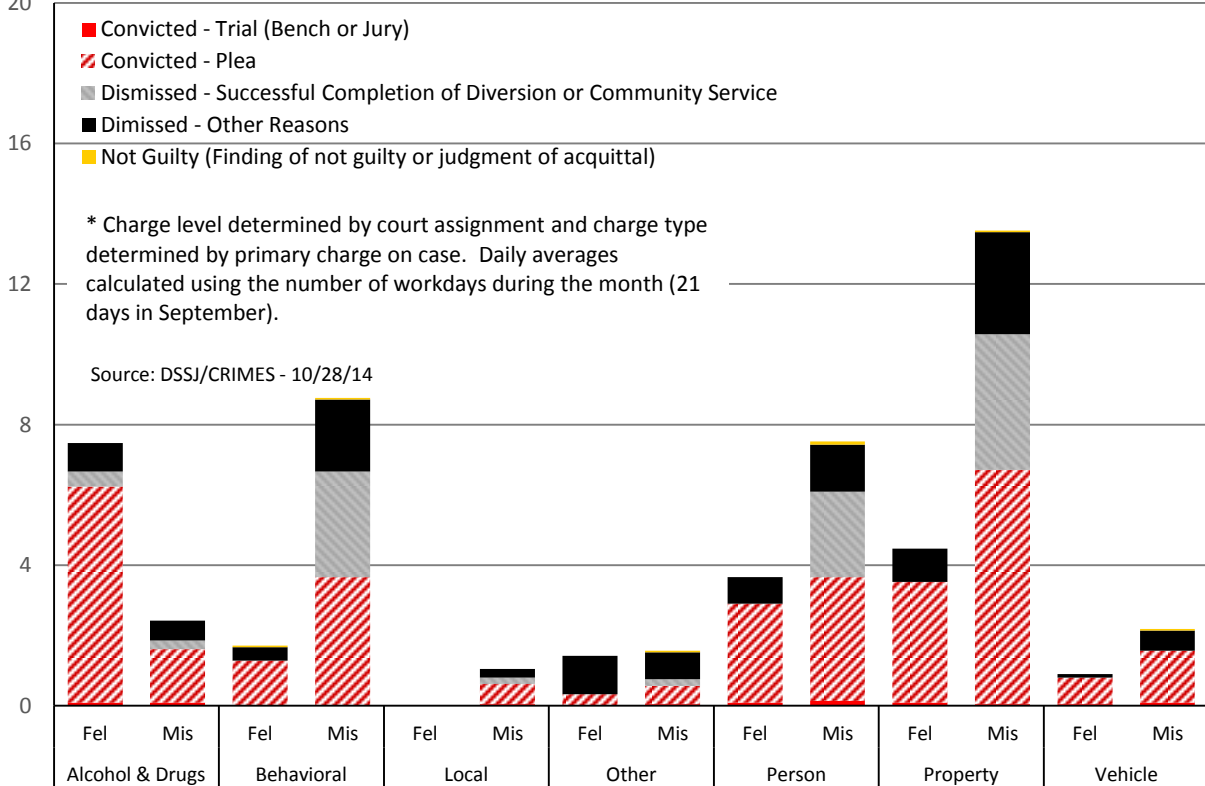
Contact Lauren Brown with questions or concerns lauren.brown@multco.us
 Current and past editions of this report are available at www.lpscc.org



Average Daily Disposed Prosecution Cases by Charge Level*



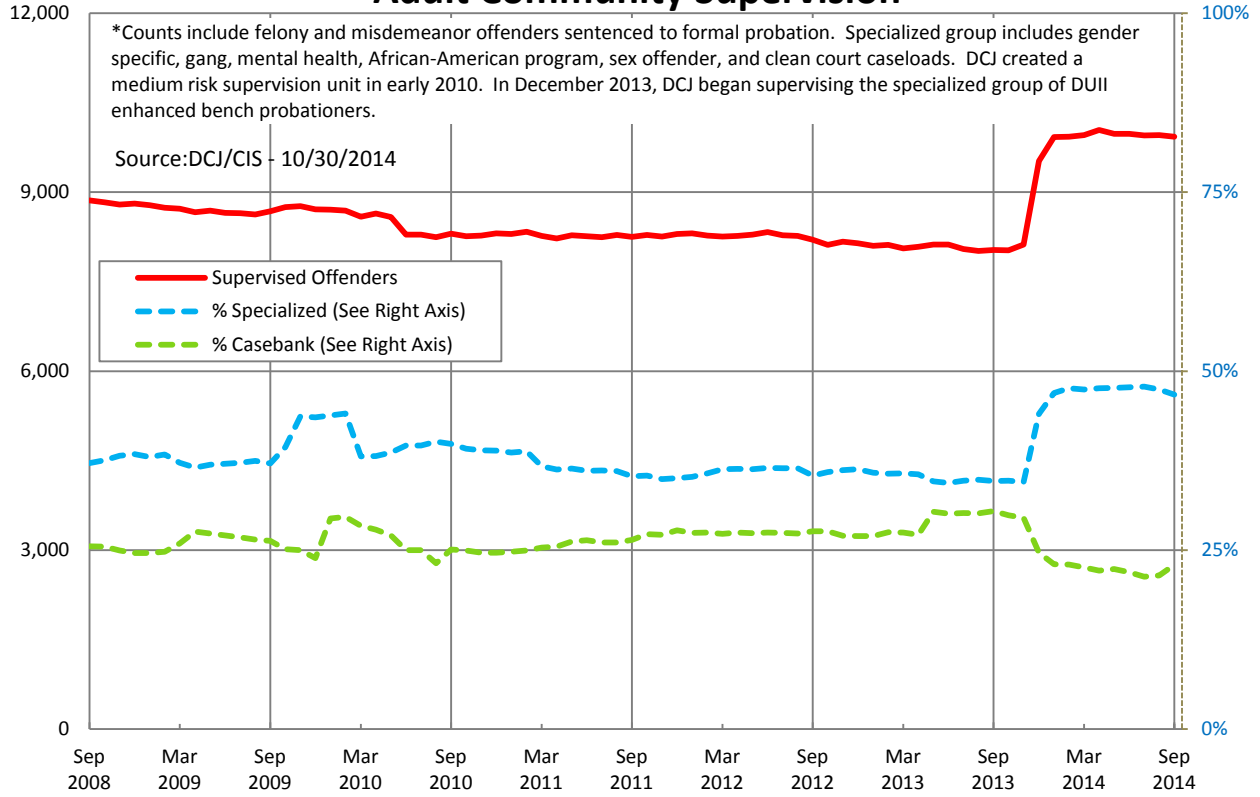
Average Daily Prosecution Case Disposition by Charge Level and Type Sept 2014*



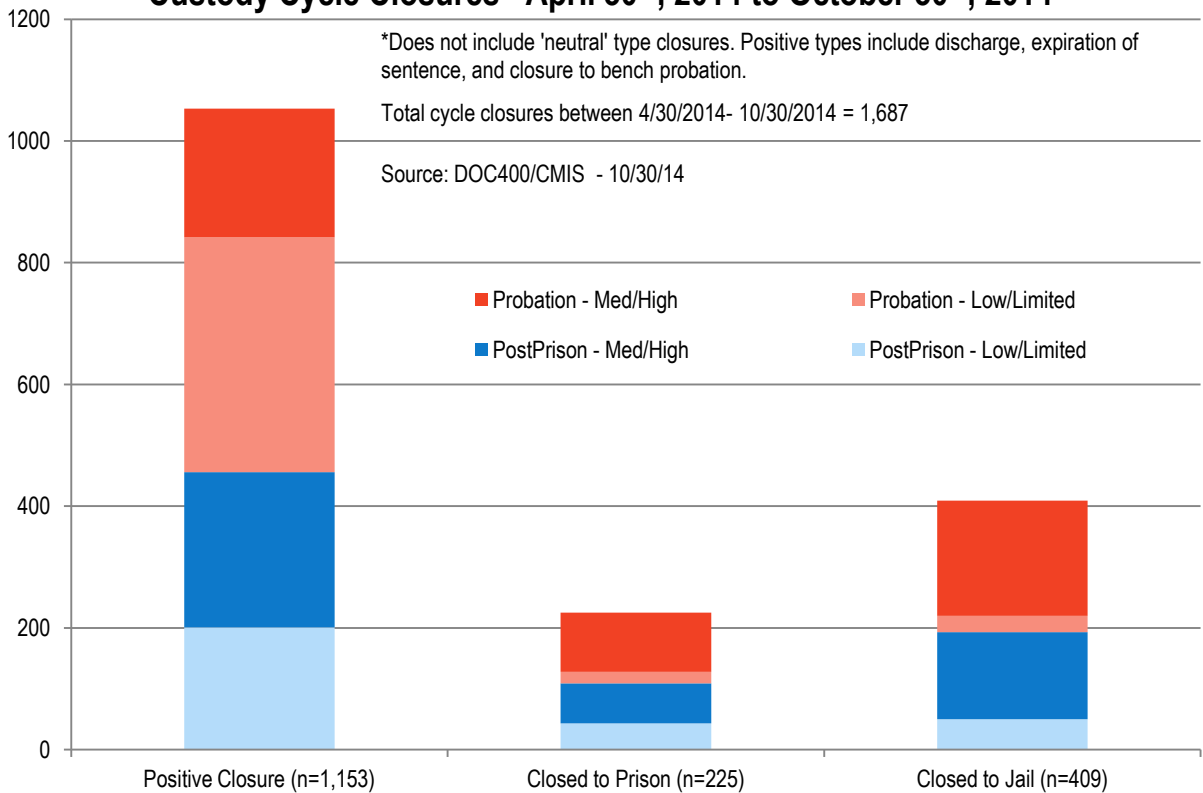
Contact Lauren Brown with questions or concerns lauren.brown@multco.us
 Current and past editions of this report are available at www.lpscc.org



Adult Community Supervision*



Custody Cycle Closures - April 30th, 2014 to October 30th, 2014*



Contact Lauren Brown with questions or concerns lauren.brown@multco.us
 Current and past editions of this report are available at www.lpscc.org

