



Bull Run
TREATMENT
PROJECTS

*Our water: Safe and abundant
for generations to come*

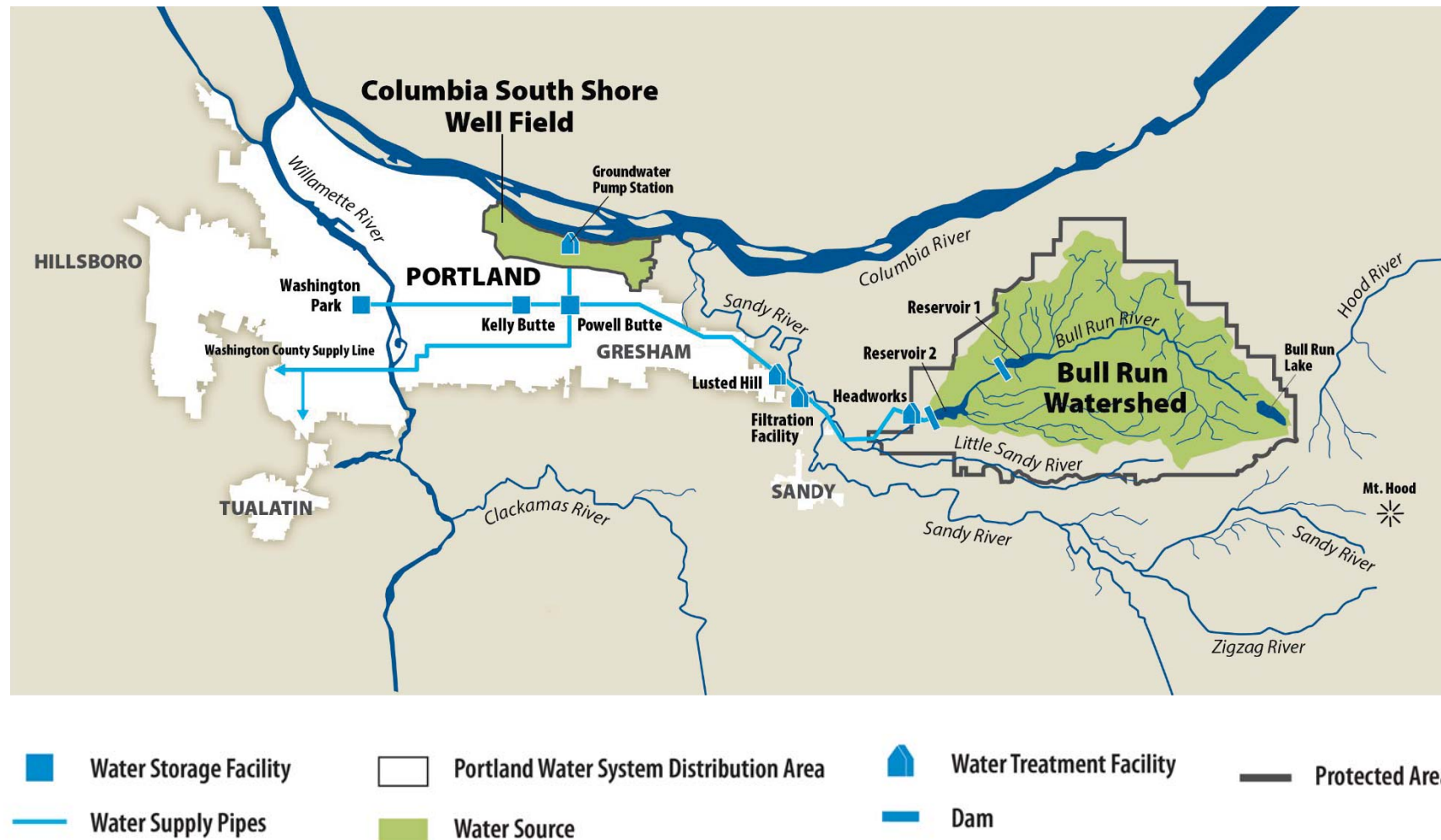
Bull Run Filtration Project

Multnomah County

Land Use Public Hearing

April 16, 2025

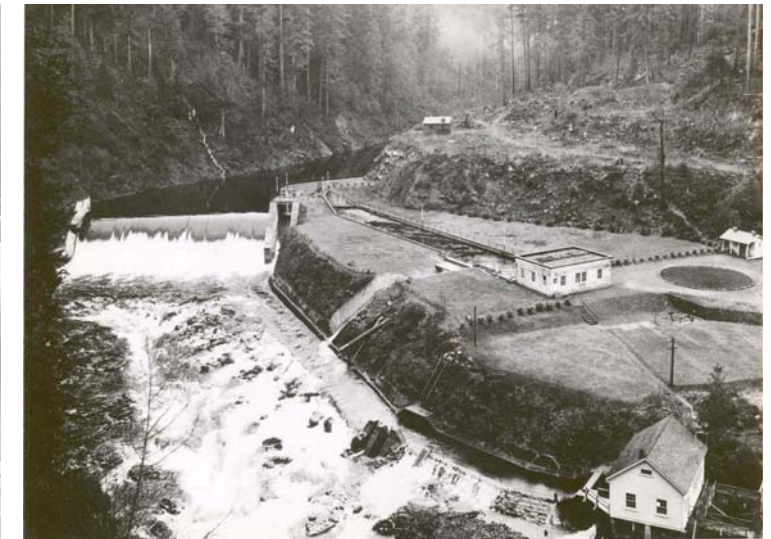
Portland's water system has delivered excellent water since 1895.



- Currently serves almost 1 million people, including Portlanders and 19 wholesale customers
- Averages 100 million gallons daily

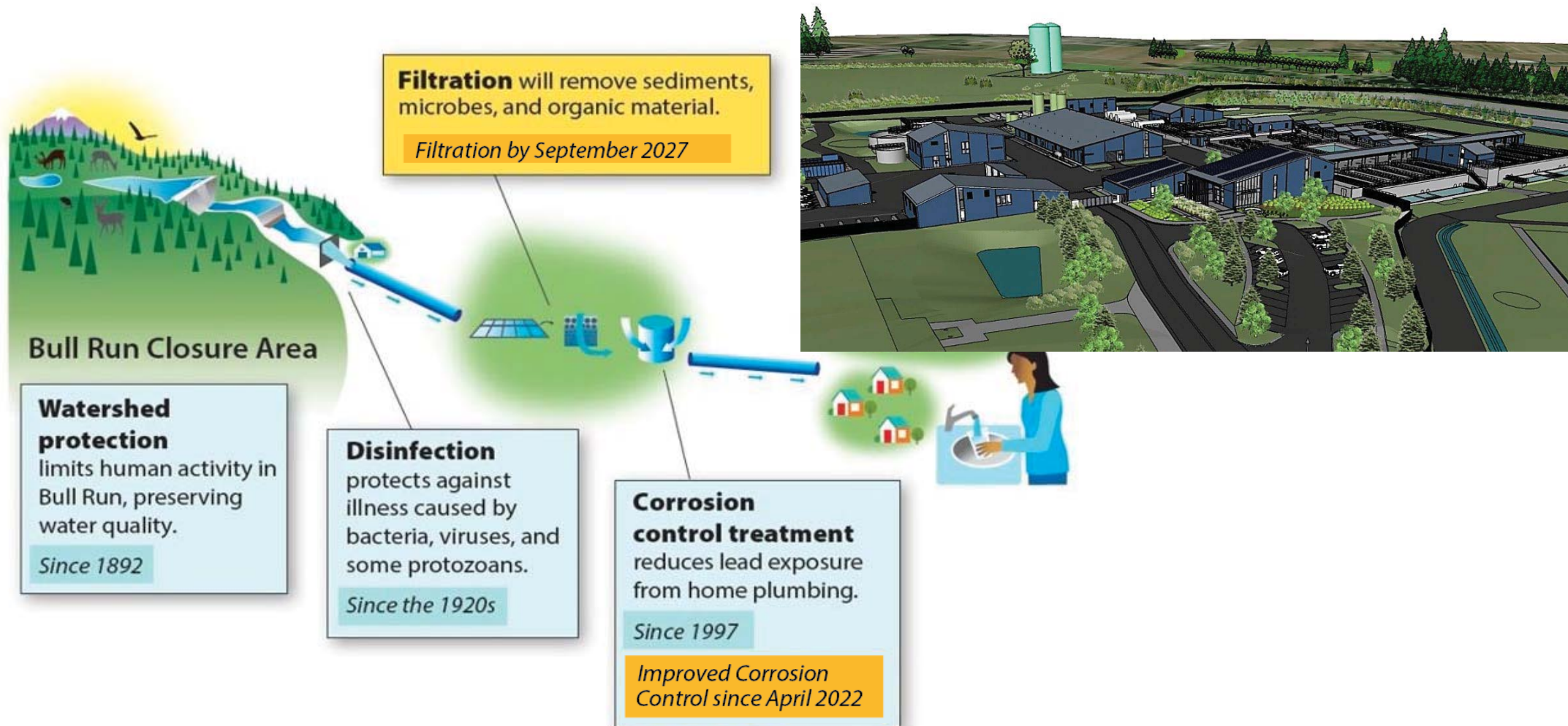
Evolution of the water system

- First built in the late 1800s
- Improvements have included:
 - Initial 24 miles of pipeline to create a gravity-fed supply of clean water
 - Lusted Hill Treatment Facility



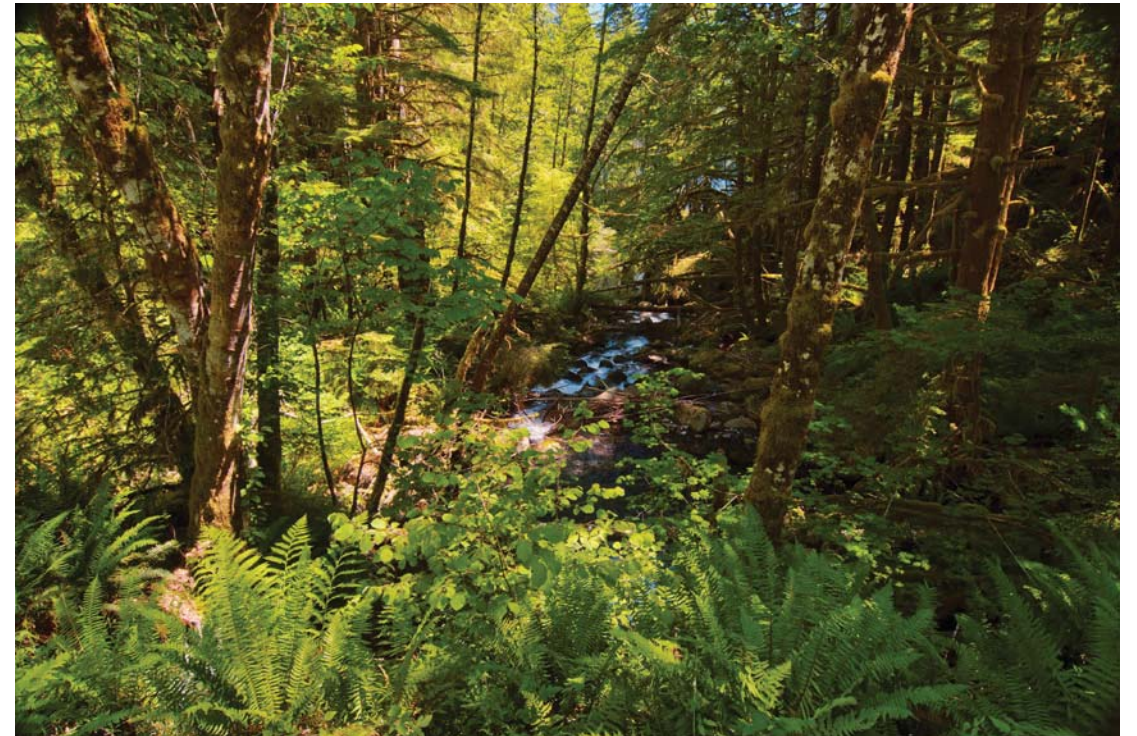
Evolution of the water system

Improvements are needed to meet national drinking standards.



Portland is a committed steward of natural resources

- Co-Managing Bull Run Watershed with USFS for 130 years.
- Supporting restoration throughout the Sandy Basin under the Bull Run Habitat Conservation Plan.
- Restoring Johnson Creek Watershed.
- Actively participating in the Columbia Slough Watershed Council to protect the Groundwater Protection Area.



Portland purchased property in 1970s for facility

- Hydraulically preferred to maintain gravity flow
- Proximity to other facilities
- Zoned by Multnomah County Land Use Planning as Multiple Use Agriculture (MUA-20)
- Use is allowed as a conditional use
- Facility not located in EFU zone
- Site can accommodate a buffer between the facility and its neighbors

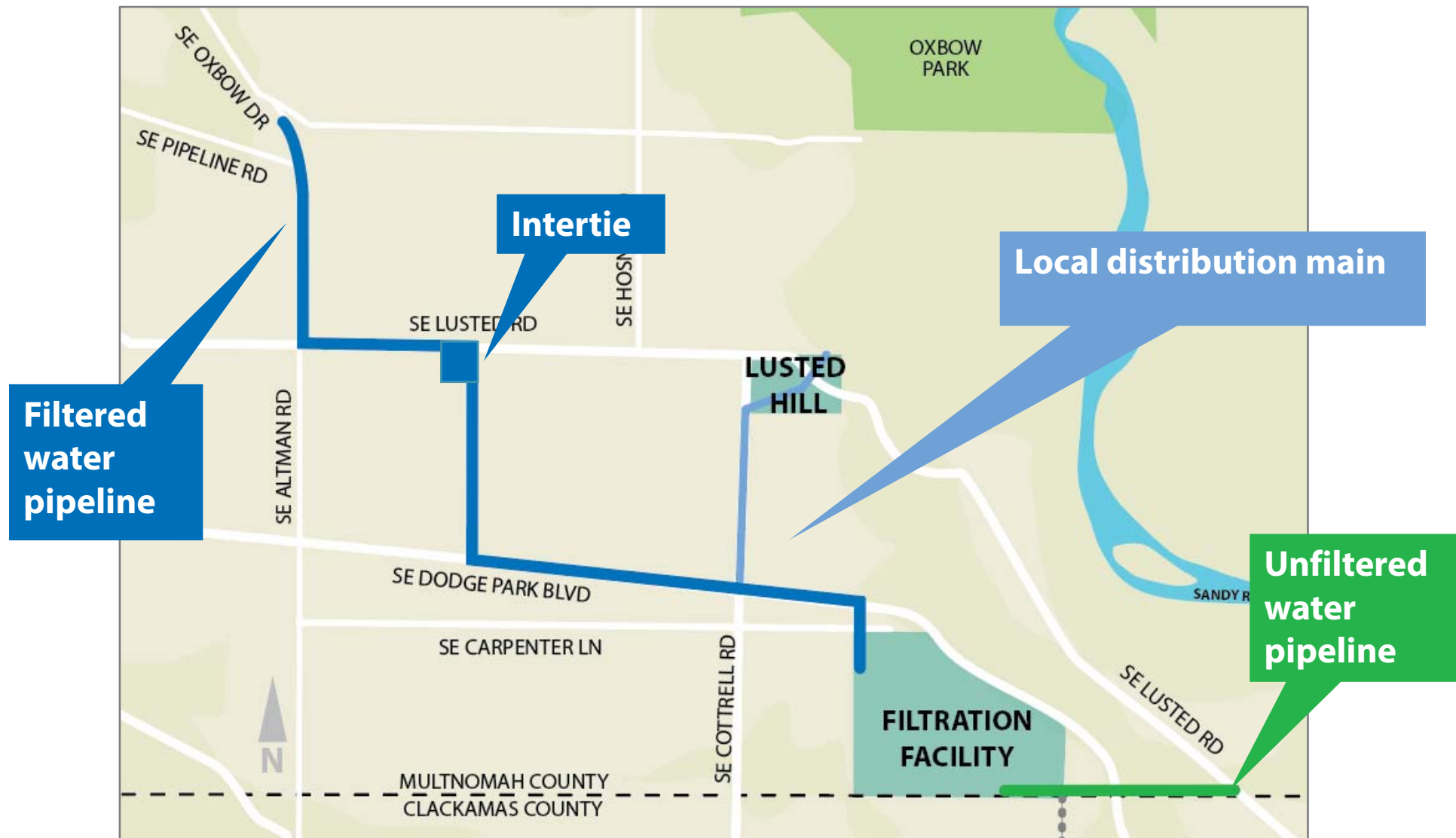


Facility location

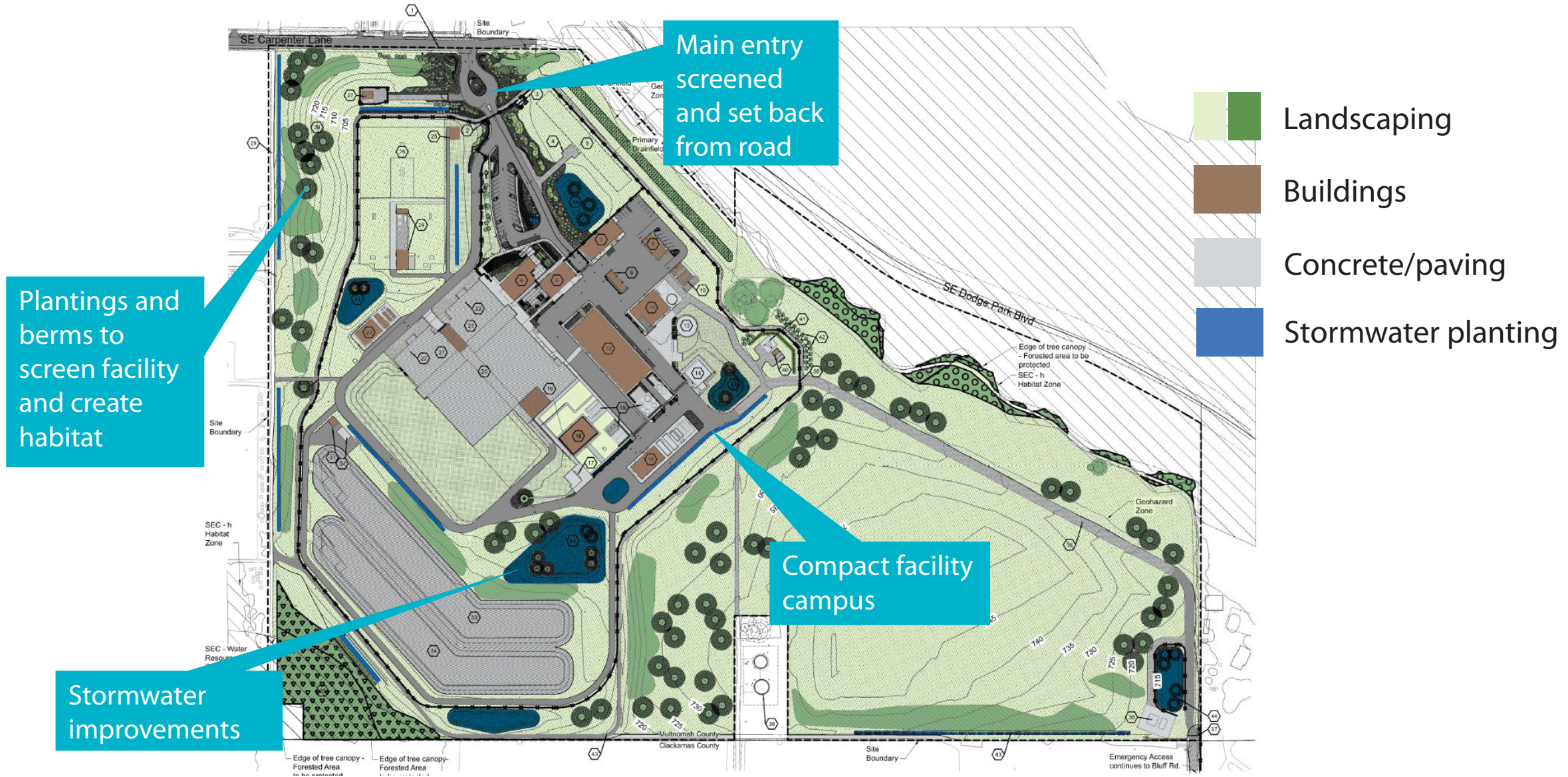
- 135 million gallons per day
- Conventional granular media filtration



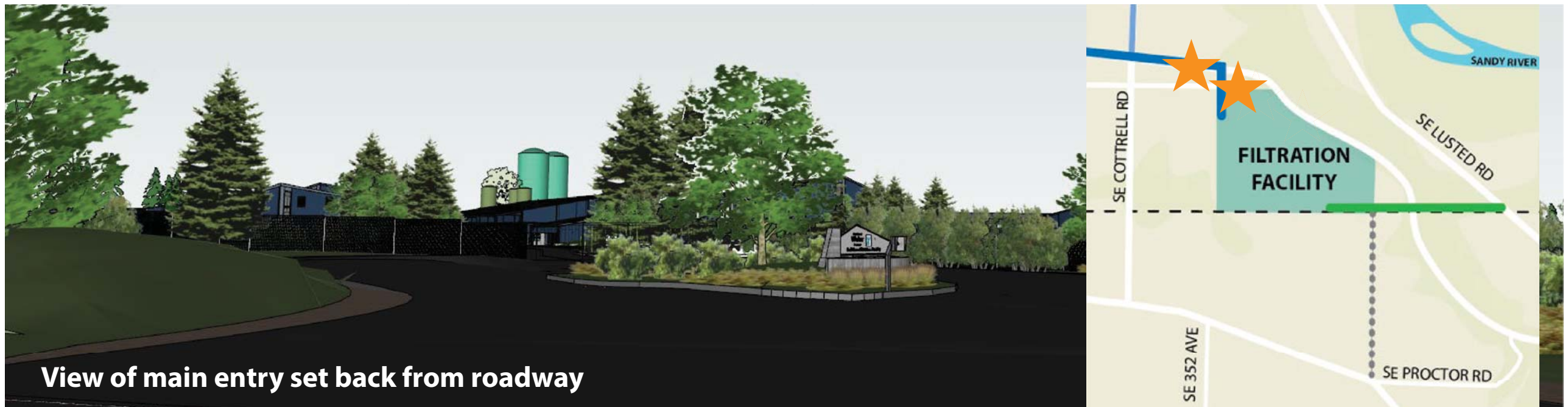
Pipeline routes



Design includes a large vegetated buffer



Views toward facility from Carpenter Lane

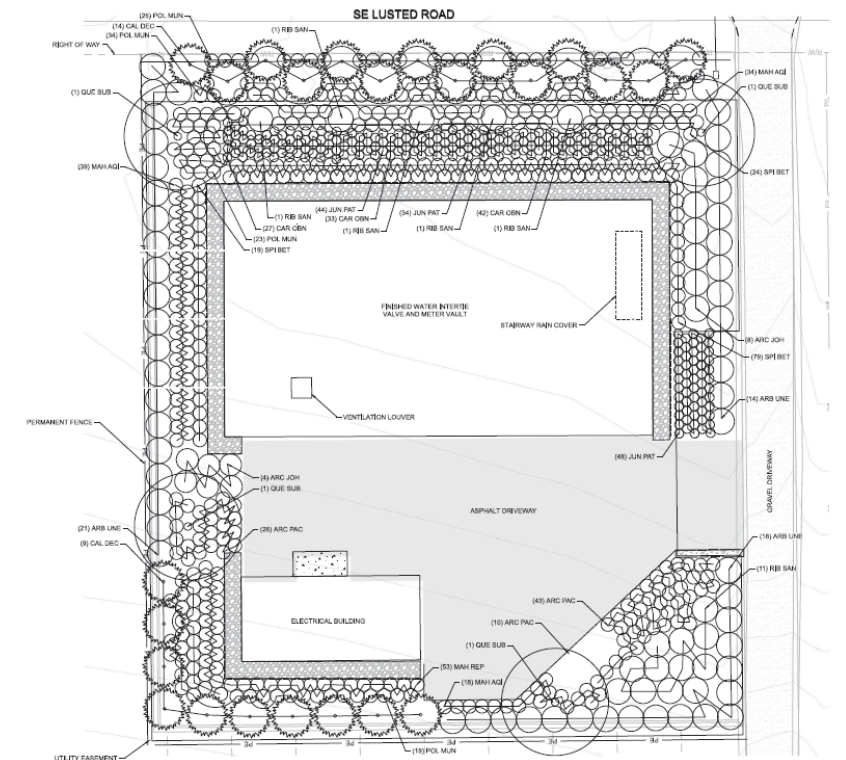


View of the facility seen from SE Bluff Road



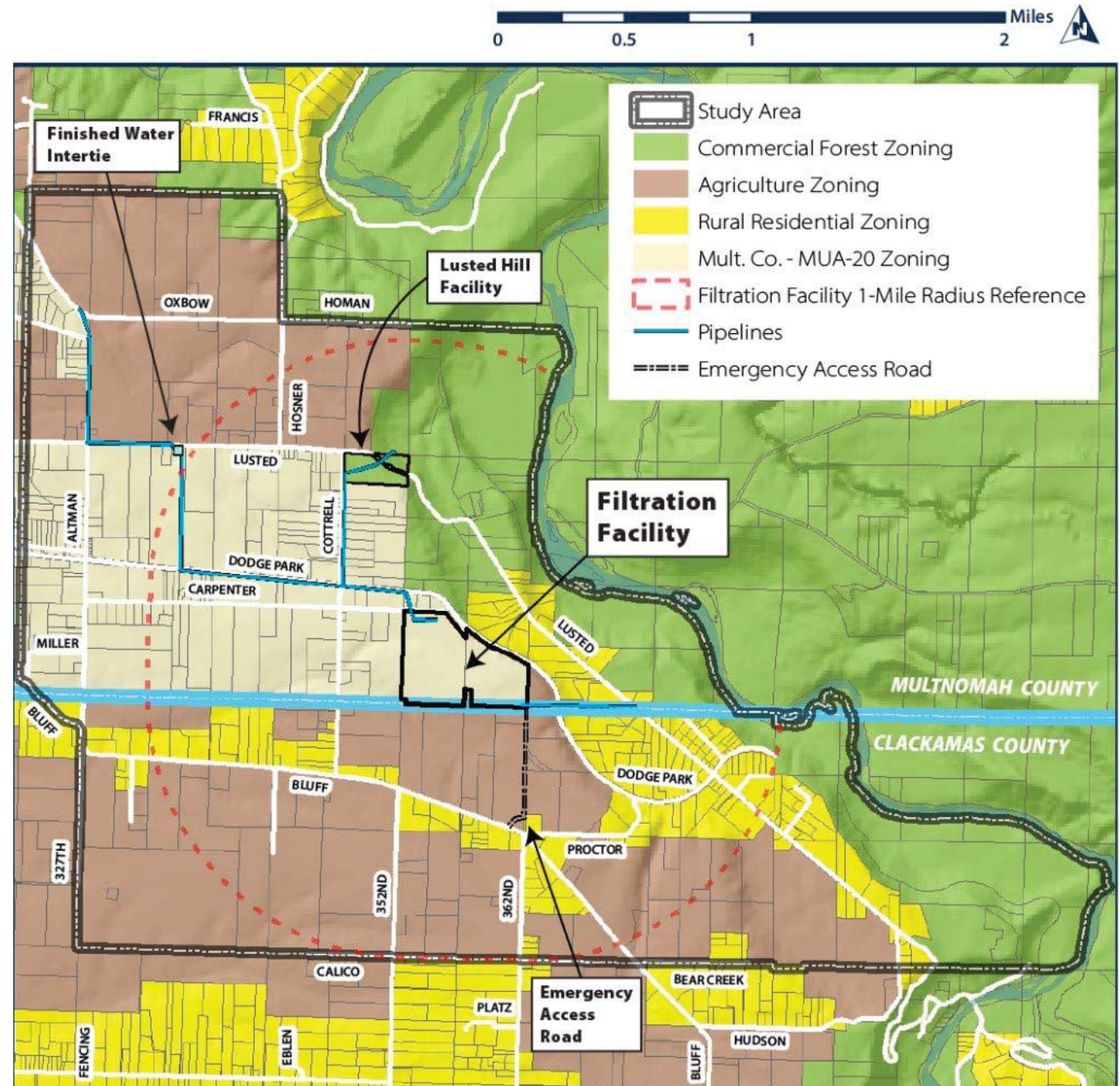
Intertie site and screening

- Small above-ground structure
- Landscape provides vegetated screening
- Venting systems similar to existing



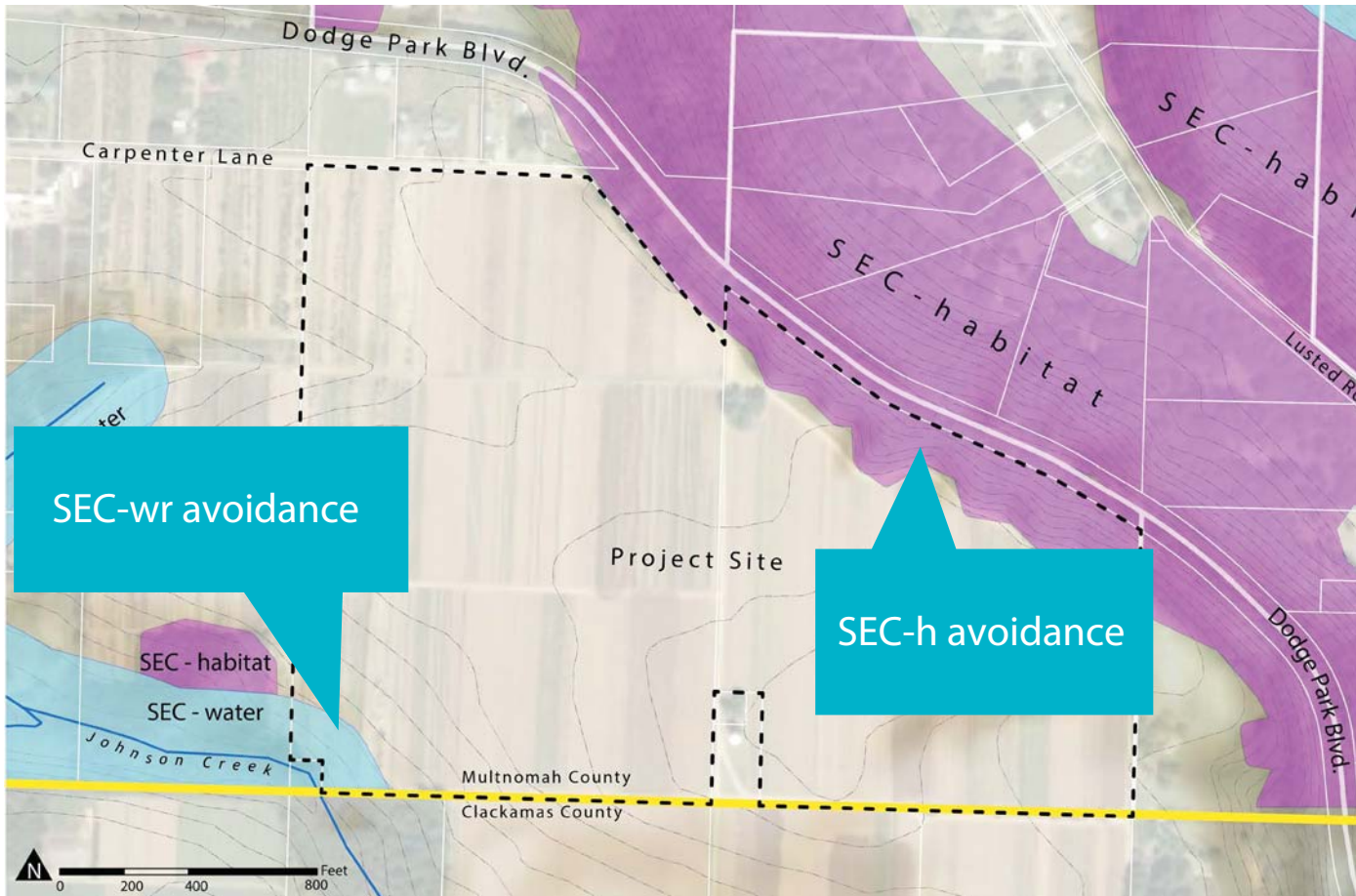
Vegetative screening plan

Zoning & Land Use History



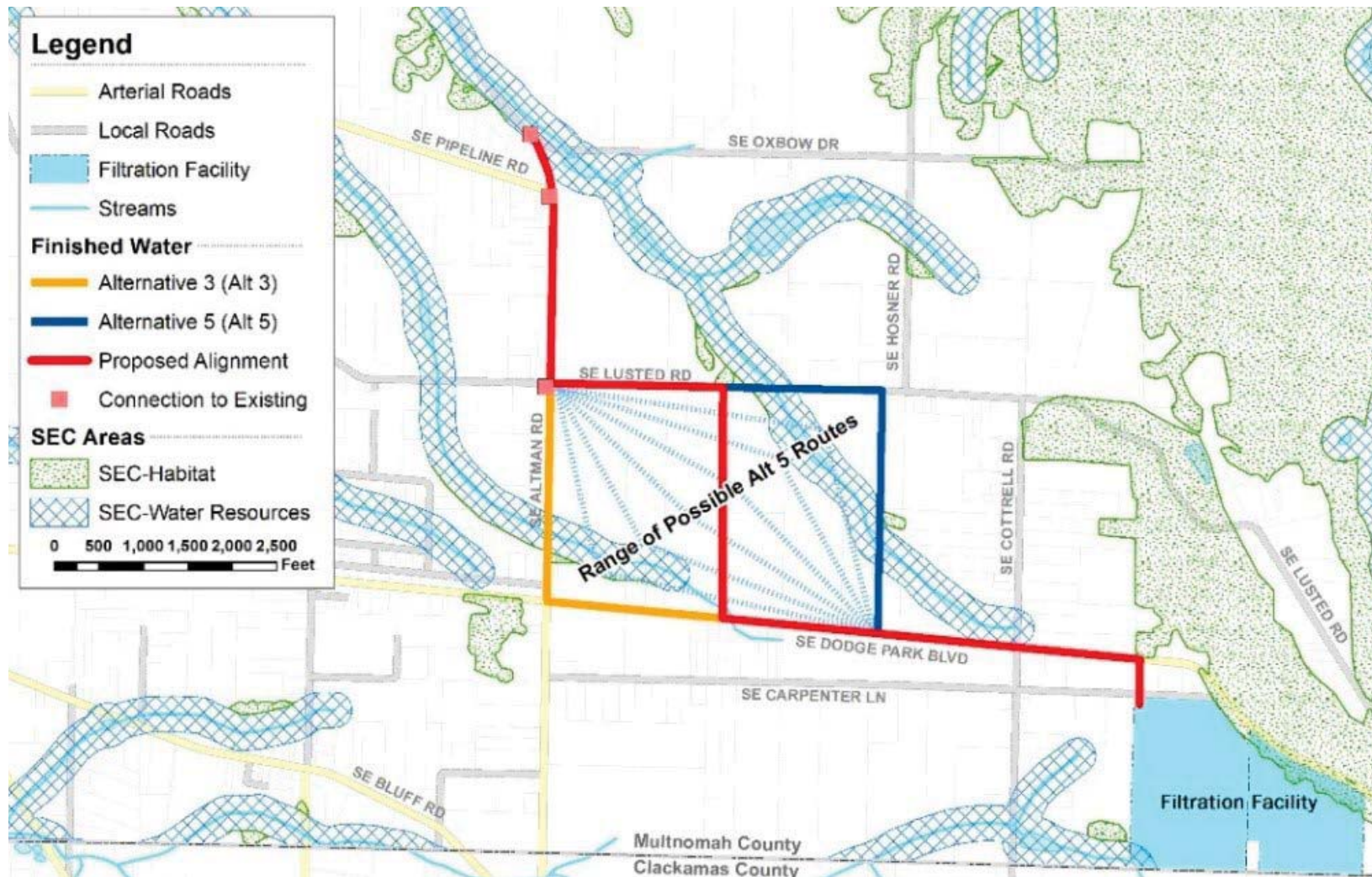
Will not adversely affect natural resources

Filtration facility site with SEC overlays

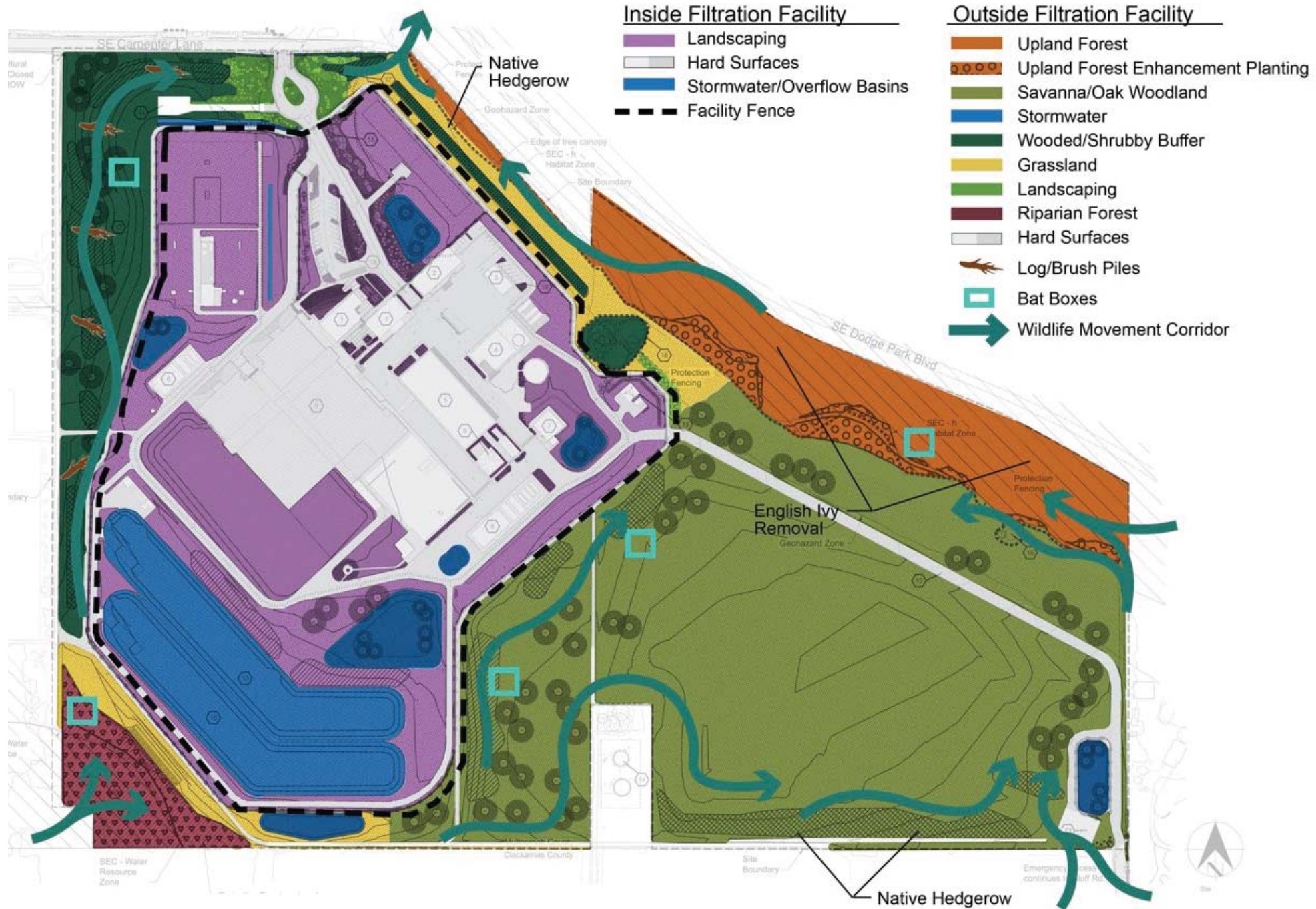


- Development completely avoids the protected SEC-wr and SEC-h areas
- Native plantings are proposed on the exposed SEC slopes to enhance habitat in the 200 ft buffer along Johnson Creek

Pipeline route avoids aquatic habitat



- Finished water pipeline routes were evaluated and modified to avoid impacts to aquatic habitat
- Pipeline route avoids crossing Beaver Creek





Bull Run
TREATMENT
PROJECTS

*Our water: Safe and abundant
for generations to come*

Learn More portland.gov/filtration

Thank you!