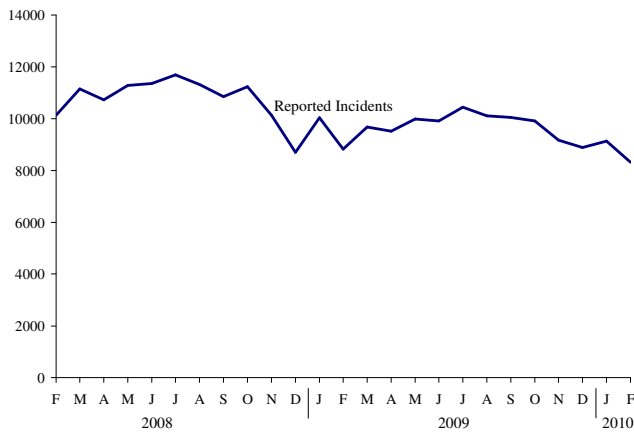


SAFETY PRIORITY BRIEF: FEBRUARY 2010

Reported Incidents



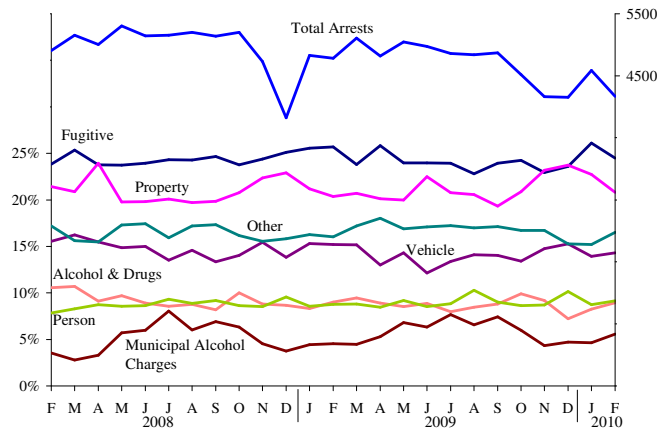
Top 10 Incidents – February 2010

Larceny	1,649
Traffic	480
Vandalism	393
Burglary	338
Property	337
Civil Hold-Detox	331
Disorderly Conduct	304
Fugitive	298
Assault/Simple	297
Dup/Unused/Cancl'd Case N	292

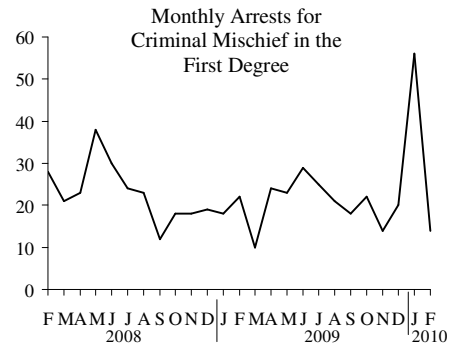
*Incident Data is for PPD and MCSO only

Note: The Safety Priority Brief is under revision. The topic areas, displayed statistics, analysis, and graphical format are being revised in order to improve the Brief's relevance and readability. These changes are being made at the direction of the DSS-J Policy Committee in response to the Safety Priority Brief Readers Survey conducted in August 2009. The revision process should be complete for the publication of the June 2010 Brief. Your feedback and suggestions are welcome. The Safety Priority Brief team can be reached at lpssc@co.multnomah.or.us.

Arrests



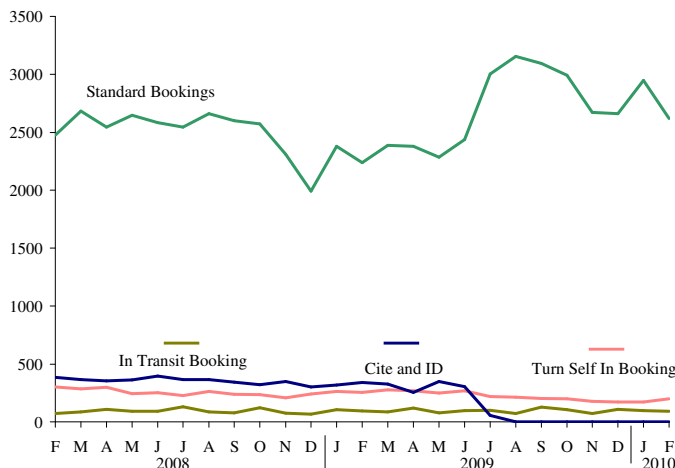
Type of arrest based on primary charge. "Fugitive" charge indicates the arrested person stands charged in the courts of another state with a crime punishable by imprisonment (ORS 133.805). "Other" category includes local & behavioral charges. "Municipal Alcohol Charges" are Portland City Codes prohibiting open containers of alcohol in public and drinking in city parks.



Month-over-month arrest analysis reveals that arrests for Criminal Mischief First Degree spiked in January, perhaps related to the New Year's Eve Holiday.

*Arrest Data is for PPD and MCSO only

Multnomah County Jail Bookings

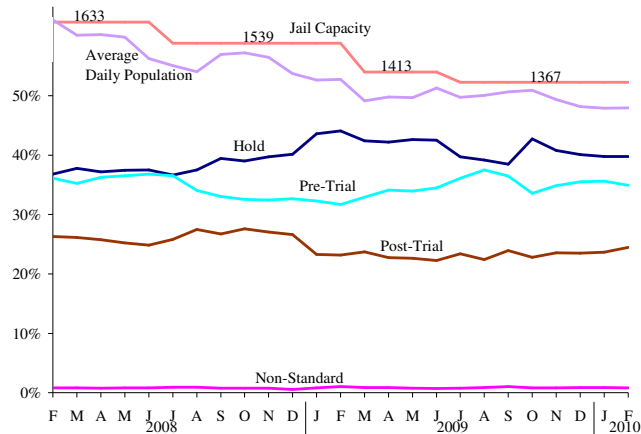


February 2010	
Standard Bookings	2620
In-Transit Bookings	94
Turn Self In Bookings	200

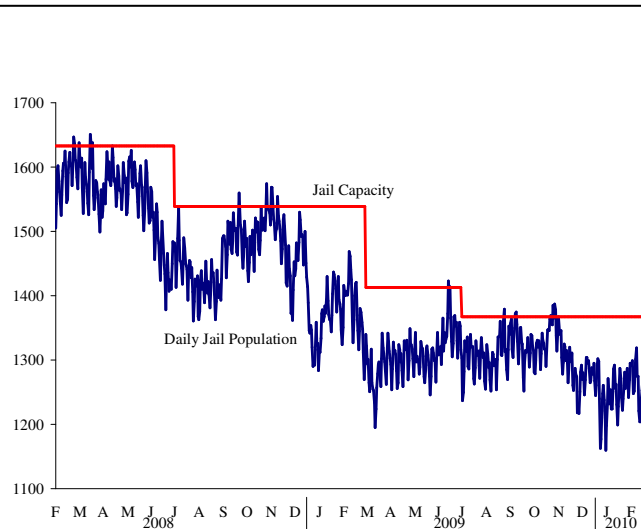
A change in MCSO policy in July 2009 ended the practice of **Cite and ID** booking and expanded the booking criteria to include persons arrested for a felony or misdemeanor crime. **In Transit** bookings refer to inmates who are temporarily housed at a M.C. facility on their way to another jurisdiction. **Turn Self In** bookings include persons who bring themselves into custody and is the coding used for the TSI weekender program in which inmates serve out their sentence on weekends.

SAFETY PRIORITY BRIEF: FEBRUARY 2010

Multnomah County Adult Jail Bed Usage

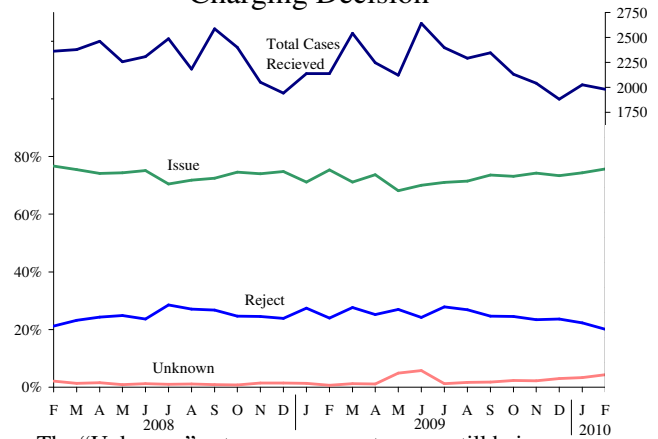


The "Hold" category includes beds used for probation and parole violations and federal, state and other county agencies.



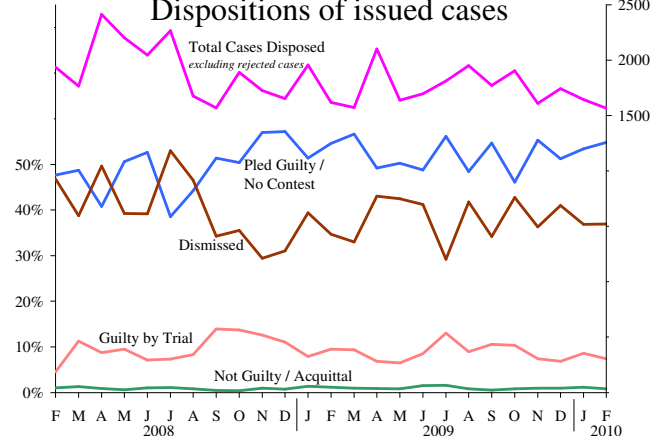
District Attorney's Charging & Disposition

Charging Decision



The "Unknown" category represents cases still being reviewed by the DA's office.

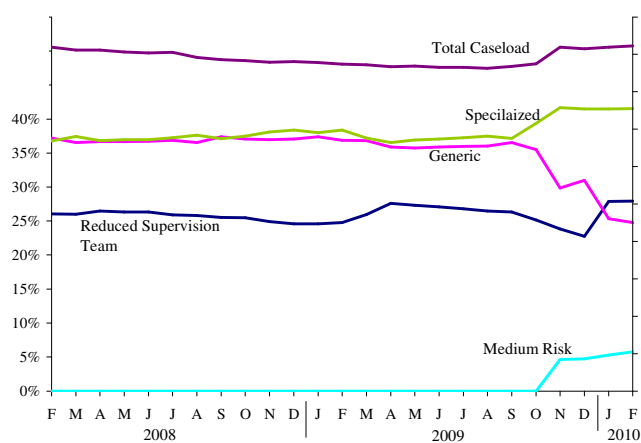
Dispositions of issued cases



Note: The most recent months will always show fewer cases disposed, as some cases were still being prosecuted at the time data was collected.

In February 2010, the DA's office rejected 514 cases that are not included in this chart.

DCJ Adult Community Supervision Caseloads



Specialized caseloads focus on specific populations of high-risk offenders, such as domestic violence and sex offenders. The **Generic** caseloads consists of high-risk high-need clients who are not part of a specialized caseload. **Reduced** supervision caseloads focus on the lowest-risk offenders on supervision and involve minimal contact between PO and client. In November 2009, medium-risk clients were moved out of the generic caseload to the **Medium Risk** caseload, where they receive fewer client visits and a reduction in treatment and DCJ services.

Specialized Caseload February 2010

Sex Offender	29%
Domestic Violence	28%
High Risk Drug Unit	16%
Gang	8%
Mental Health	7%
Gender Specific	5%
African American Program	3%
Specialized Supervision Team	3%
DUII	2%
Total Specialized Caseload	3296