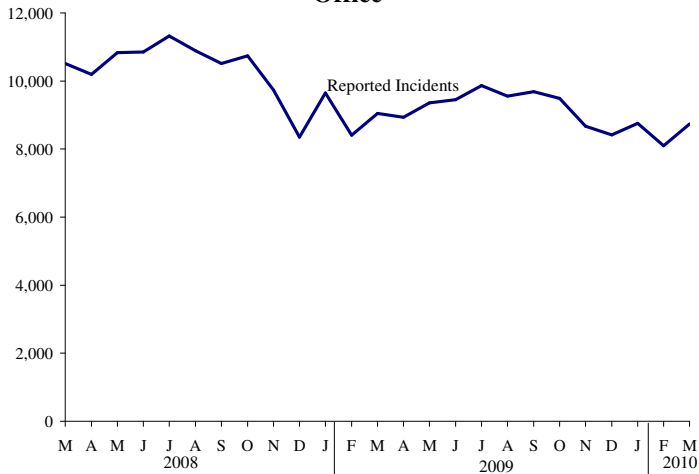


LPSCC PUBLIC SAFETY BRIEF: MARCH 2010

Reported Incidents

Portland Police Bureau and Multnomah County Sheriff's Office



Top 10 Incidents: March 2010

Larceny	1,785
Vandalism	734
Impound Vehicle	633
Traffic	590
Property	456
Fugitive	403
Civil Hold-Detox	394
Assault/Simple	376
Burglary	352
Warrant Service	347

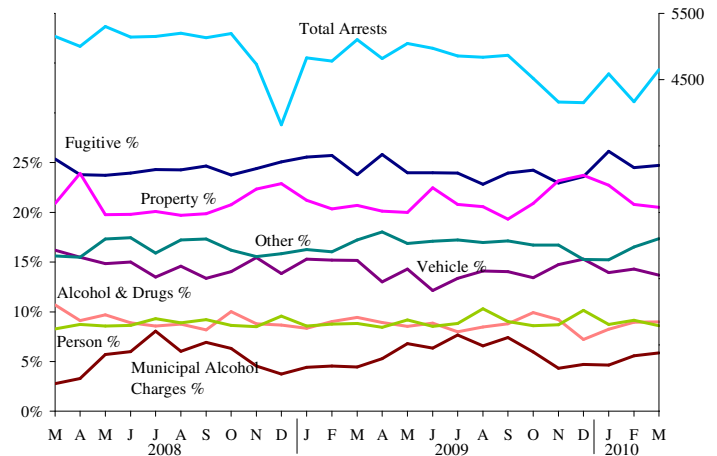
Monthly Spotlight



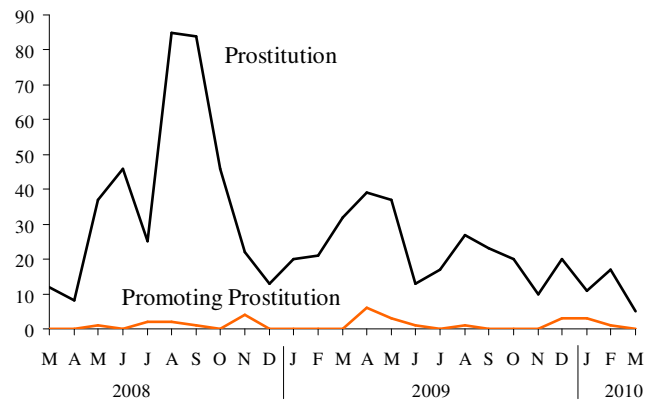
Forgery incidents peaked at 183 in January 2009. In March 2010 there were only 68 incidents, the second lowest in a two year period.

Arrests

Portland Police Bureau and Multnomah County Sheriff's Office



Monthly Spotlight



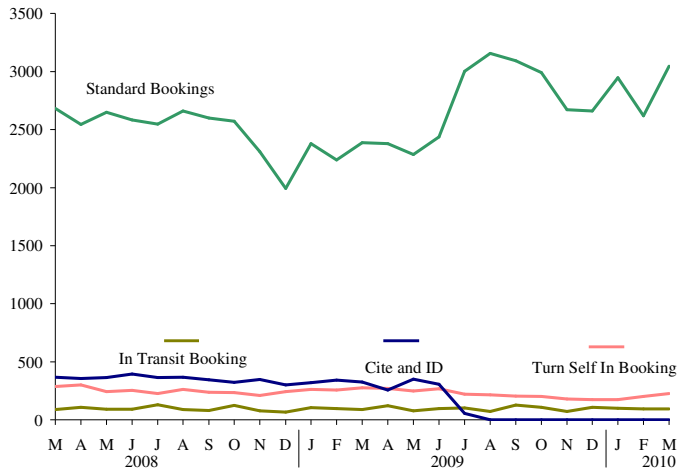
Monthly arrests for Prostitution charge (ORS 167.007) and Promoting Prostitution (167.012). March 2010 showed a two-year low in prostitution arrests (5), down from a peak of 85 in April 2008.

Note: This report is produced by staff to Multnomah County's Local Public Safety Coordinating Council (LPSCC) and is undergoing revisions to its topic areas, statistics, graphs, and format. Revisions should be completed in time for the publication of the June 2010 Brief. Feedback, suggestions and questioned can be directed to lpssc.staff@co.multnomah.or.us.

Unless otherwise noted, the data in this document was collected from **DSS-Justice**, Multnomah County's public safety data warehouse.

LPSCC PUBLIC SAFETY BRIEF: MARCH 2010

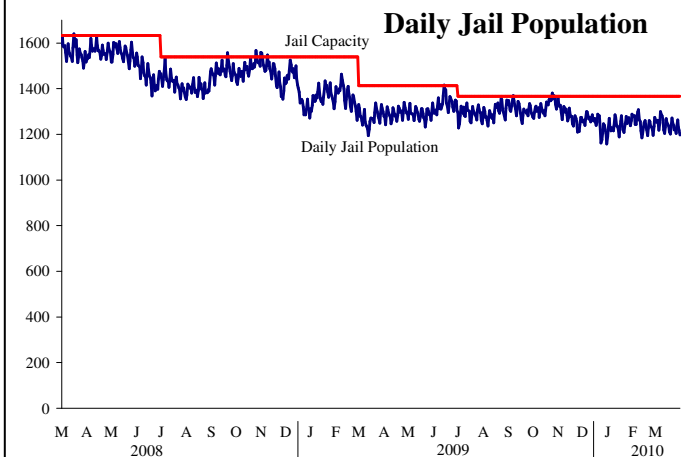
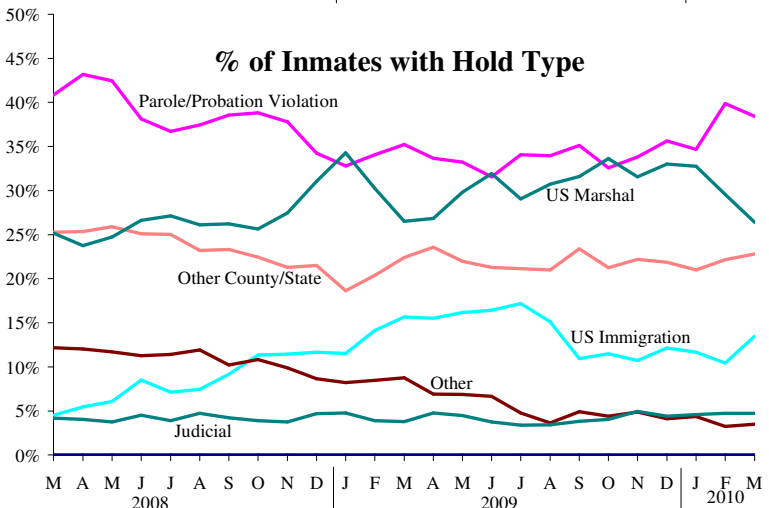
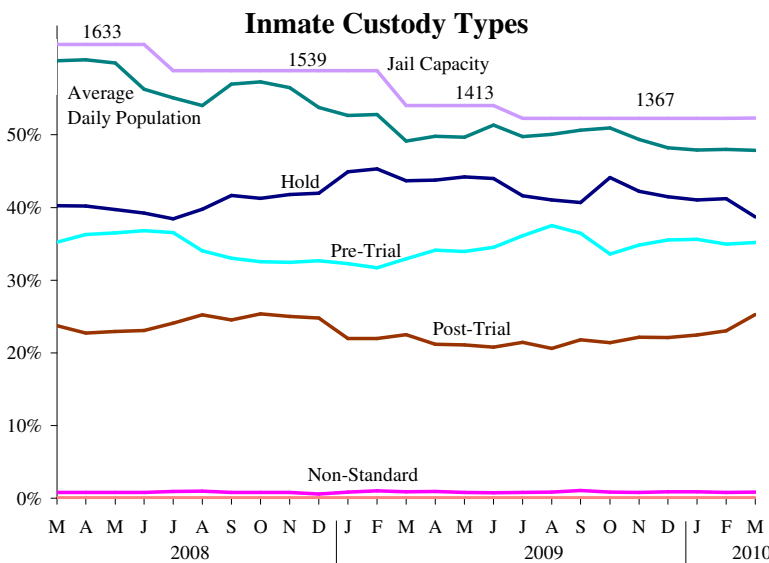
Multnomah County Sheriff's Office Jail Bookings



March 2010	
Standard Booking	3047
In-Transit Booking	94
Turn Self In Booking	228

MCSO policy changes in July 2009 ended the practice of **Cite and ID** booking and expanded the booking criteria to include all persons arrested for a felony or misdemeanor crime. **In Transit** bookings refer to inmates who are temporarily housed at a M.C. facility on their way to another jurisdiction. **Turn Self In** bookings refers to persons who bring themselves into custody, including those sentenced to the TSI weekender program in which inmates serve out sentences on weekends.

Multnomah County Sheriff's Office Jail Population



March 2010 Average Daily Jail Population

All inmates	1252
Pre-Trial	35% 441
Post-Trial	27% 336
Non-Standard	1% 10
Holds	37% 465

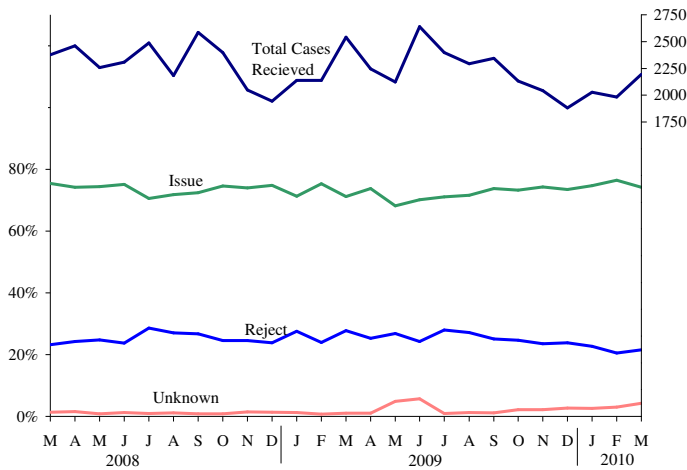
Note: The number of **US Marshal** holds will differ from the count reported to the federal government for the purposes of reimbursement.

The percent totals for the “% of Inmates with Hold Type” is greater than 100% because some of the inmates have two holds.

LPSCC PUBLIC SAFETY BRIEF: MARCH 2010

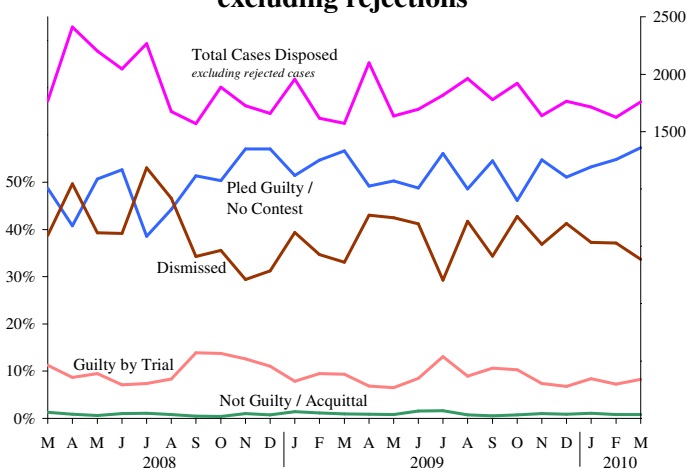
Charging and Disposition of Cases

Multnomah County DA's Office Charging Decisions for All Cases Received



Data for the most recent months will always show an increase in "Unknown" cases, which are still being reviewed by MCDA.

Case Dispositions, excluding rejections



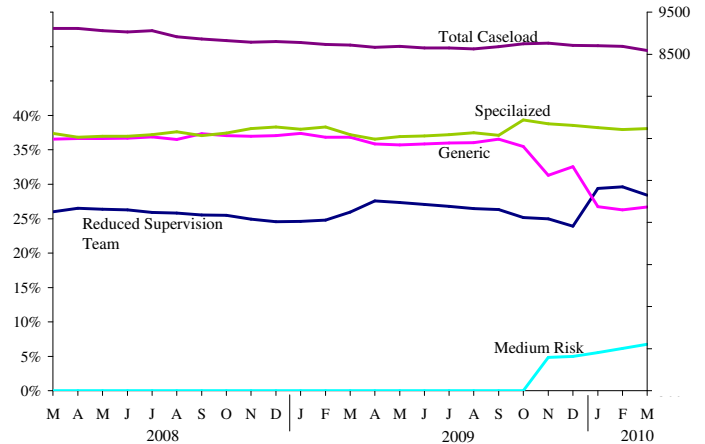
Data for the most recent months will always show a decrease in the total cases disposed because some cases still remain open, awaiting action by the courts, the police, or the DA's office.

In March 2010, there were 554 cases disposed by rejection that were never prosecuted. They are not included in this chart.

Revision note: A chart depicting pre-trial supervision caseloads and a chart depicting sentencing decisions will be included in future Briefs.

Adult Community Supervision Caseloads

Department of Community Justice Adult Caseloads



Specialized Caseloads focus on providing supervision techniques and services specific to the assessed risks and needs of particular groups of offenders.

Generic Caseloads provide a range of supervision techniques and services to address the assessed risks and needs of offenders.

Reduced Supervision Team provides a limited range of supervision services to offenders at a low risk of reoffending.

Medium Risk Supervision provides a modest range of supervision services to offenders that are considered to be at a moderate risk of reoffending.

Specialized Caseload Snapshot March 2010

Sex Offender	29%
Domestic Violence	28%
High Risk Drug Unit	15%
Gang	8%
Mental Health	7%
Gender Specific	5%
African American Program	3%
Specialized Supervision Team	3%
DUII	2%
Total Specialized Caseload	3274

*Data for Adult Community Supervision Caseloads are provided by DCJ research and evaluation staff

Revision Note: Charts describing the DCJ's work with youth will be included in future Briefs.