

### 5.3.6 [Sauvie Island Fire](#)



Sauvie Island Fire District is a rural fire protection district created in the 1980s. It provides protection to the entirety of Sauvie Island, covering 24,000 acres between the Multnomah Channel and the Columbia River in the northwestern edge of Multnomah County and southern Columbia County. The northern third of the island is mostly made up by the [Sauvie Island Wildlife Area](#) owned by the Oregon Department of Fish and Wildlife.

#### [Interactive Version of This Map](#)

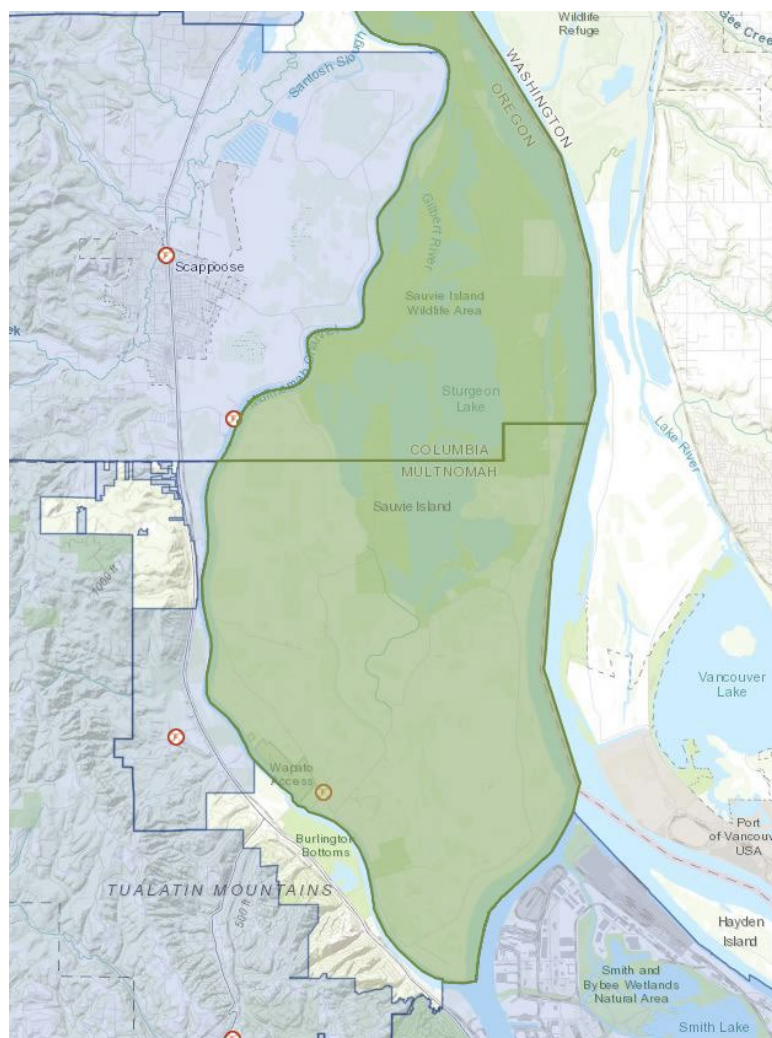


Figure 68 - Map showing Sauvie Island Fire service boundaries and fire station. Map from Oregon State Fire Marshal.

Sauvie Island is an unincorporated part of Multnomah County with approximately 2,850 residents.

Wildfire risks for Sauvie Island come in variable grassy or wooded areas, from agricultural fuels, and potential fires in the Wildlife Area. The island is primarily in agricultural use and also has popular summer beaches.

Sauvie Island Fire responds to about 140-150 calls a year, with about 65% of those calls for emergency medical services, with the remainder being for fires, motor vehicle collision rescues, and miscellaneous assistance calls. Sauvie Island has a main station, two sub-stations with equipment, and a total of three engines, two tenders, and three brush units. There are currently 27 volunteers who support operations. Response capacity has been improved by the acquisition of vehicles and other equipment from other local departments. The department responded to six brush fires, five grass fires, one vegetation fire and one forest fire in 2021.

## Chapter 5 – Fire Districts and Other Agencies – Sauvie Island Fire

Vulnerability from wildfire is heightened by the limited number of evacuation routes on the island and the large number of visitors, especially during the summer. Summertime visitors may increase the risk of fire ignition in wooded areas near beaches, be less likely to receive evacuation warnings, and be less able to successfully navigate evacuation routes.

Sauvie Island has a strong community support network for emergency preparedness through the Sauvie Island Community Association and the Sauvie Island Grange. Wildfire risk assessments for residents are arranged through Portland Fire & Rescue (PF&R), and conducted by Sauvie Island Fire, PF&R, or Scappoose Fire.

[Interactive Version of Map 1 \(left\) – Planning and Cadastral/Oregon WUI Hazard Rating](#)

[Interactive Version of Map 2 \(right\) – Wildfire Potential Impacts/Overall Potential Impact](#)

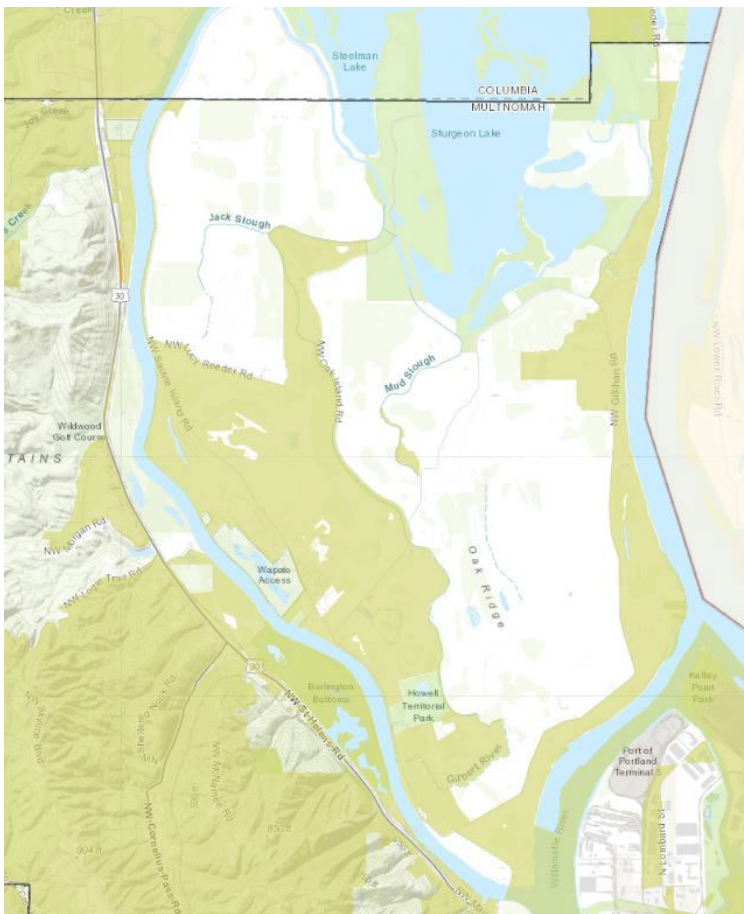


Figure 70 - Map showing WUI hazard areas in green, in the Multnomah County portion of Sauvie Island. Map from Oregon Department of Forestry WUI Hazard Map.

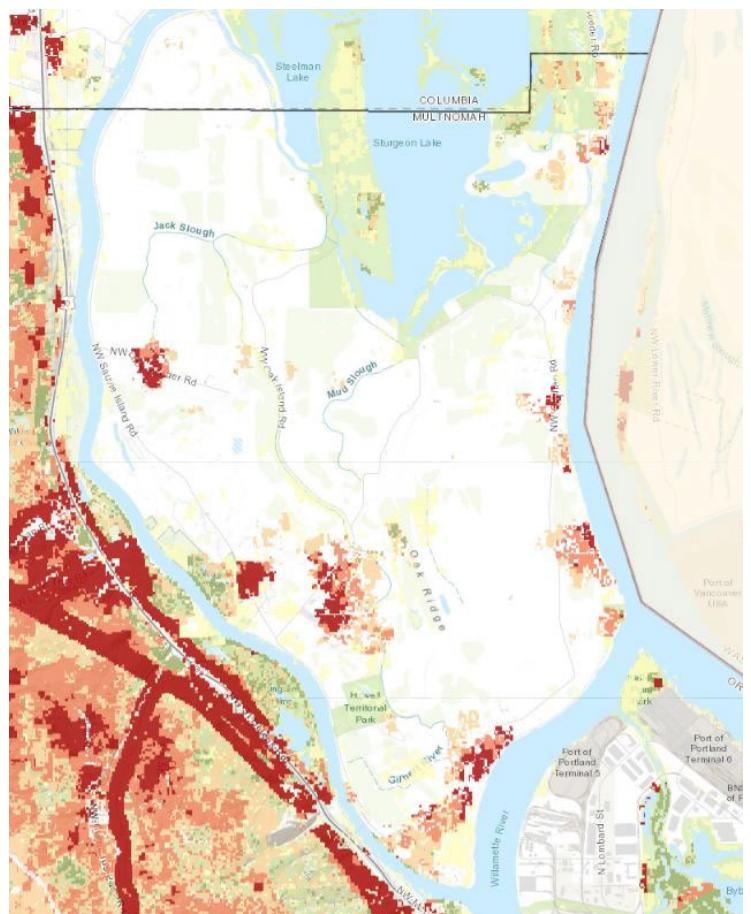


Figure 69 - Map showing overall potential impact from wildfire in the Multnomah County portion of Sauvie Island. Areas in red have the most potential impact from wildfire. Map from PNW-QWRA.

**Sauvie Island Fire Mitigation Strategies**

Action No.	Topic	Mitigation Action	Supporting Partners
1	Structural Ignitability	Support defensible space projects identified through home assessments.	Portland Fire & Rescue, Scappoose Fire, Oregon Department of Forestry, Oregon State Fire Marshal
2	Operational Coordination and Capacity	Develop an evacuation plan that identifies specific routes to move people off the island, considering limited access routes and summer visitor's unfamiliarity with local roads.	Multnomah County Sheriff's Office, Multnomah County Emergency Management
3	Operational Coordination and Capacity	Assess alerting procedures, especially for periods with high-volumes of visitors during periods of high wildfire risk.	Multnomah County Emergency Management

**Communities at Risk**

As in the 2011 version of this plan, the entirety of Sauvie Island is considered to be a single Community at Risk. The nature of development on the island is such that there are not clearly defined neighborhoods with unique risk characteristics.

Priority Fuel Mitigation Location	Project Details
<b>All Sauvie Island wildfire risk areas</b>	Defensible space projects identified through the home assessment program.