



5.3.7 Scappoose Rural Fire Protection District

Scappoose Rural Fire Protection District provides emergency protection services across 52 square miles and serves about 12,000 people. Scappoose Fire's service area is primarily in Columbia County, but extends into the northern limit of Multnomah County, including the unincorporated communities of Holbrook, Chapman, and Warren, and an area of floating homes along the Multnomah Channel. There were 17 vegetation fires responded to in 2020 across the entirety of Scappoose Fire's service area.

The department has 20 firefighting staff, two administrative and three chiefs. Scappoose RFPD has one station in Multnomah County, located in Holbrook, which has wildfire response equipment but is not staffed. Overall the District has three brush engines and a fire boat.

[Interactive Version of This Map](#)

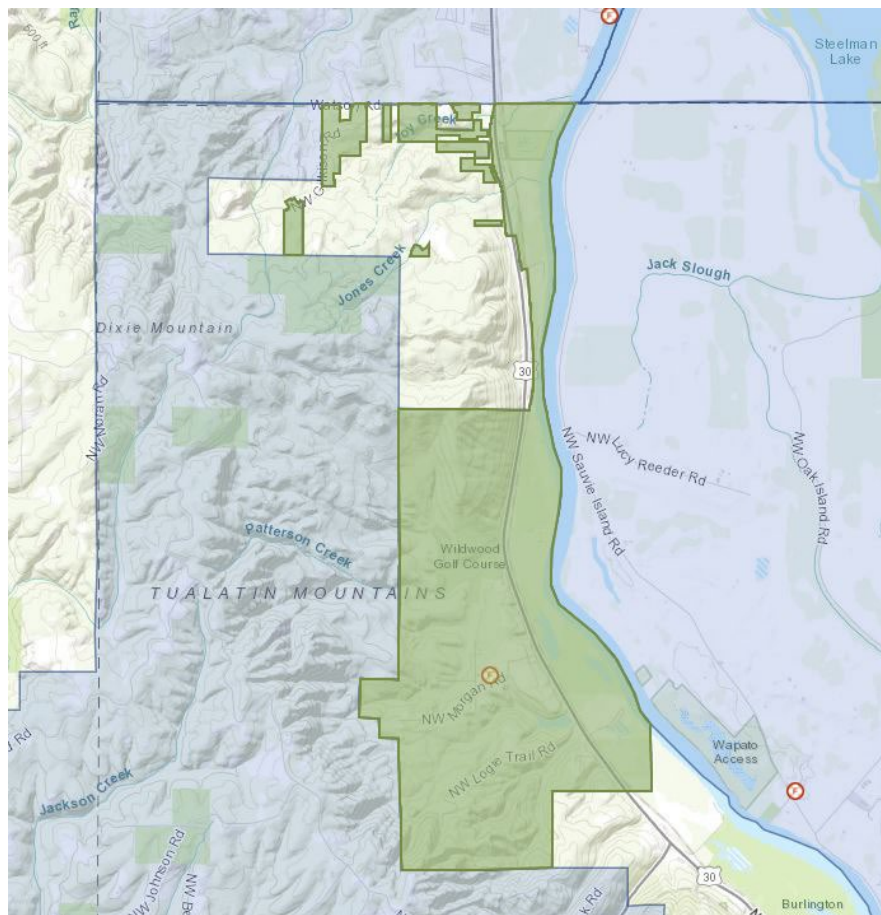


Figure 71 - Map showing Scappoose Fire service area in Multnomah County and location of fire station in Holbrook. Map from the Oregon State Fire Marshal.

Issues for Scappoose Fire in Multnomah County include fire detection in mountainous service areas and coordination with neighboring departments where fire service boundaries are isolated. Evacuation coordination in this area, with low population density and limited ingress and egress routes in isolated neighborhoods is an additional need. There is also a sizable area, with few structures, that is structurally unprotected but where Scappoose Fire provides first response.

Creating defensible space around homes and building community preparedness in isolated areas are key strategies for reducing risk.

[Interactive Version of Map 1 \(left\) – Planning and Cadastral/Oregon WUI Hazard Rating](#)

[Interactive Version of Map 2 \(right\) – Wildfire Potential Impacts/Overall Potential Impact](#)

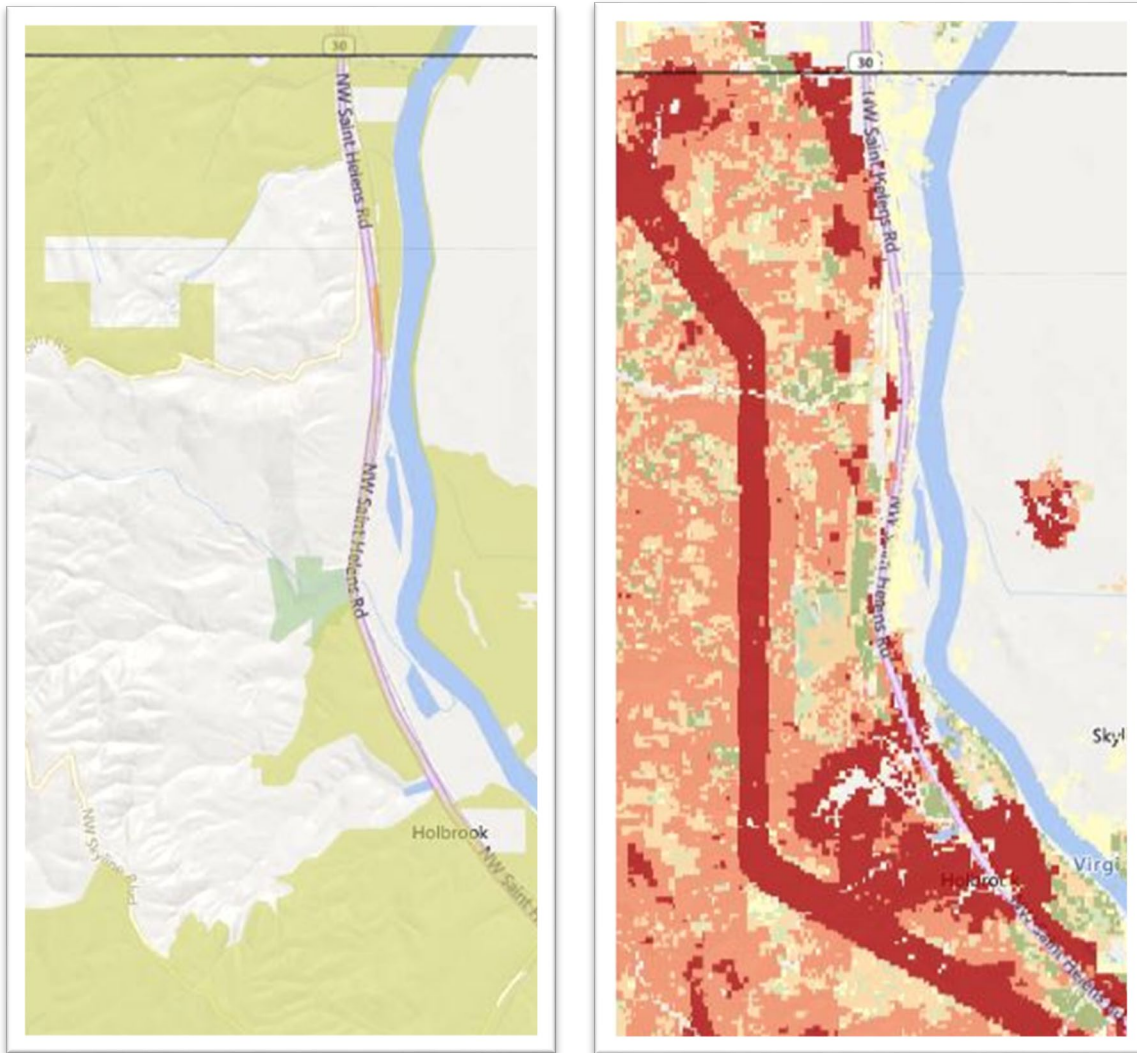


Figure 72 - Maps of Scappoose Fire protection areas in Multnomah County, showing WUI Hazard in green (left) and potential impacts, with the most severe in dark red (right).

The unincorporated community of Holbrook is the most populated risk area, with about 50 homes and high impact from wildfire. Development along Highway 30 and NW Gilkison Road at the northern border with Columbia County also carries high potential vulnerability.

Scappoose Fire Mitigation Strategies

Action No.	Action Category	Mitigation Strategy	Supporting Partners
1	Data and Risk Assessment	Build GIS layers from online mapping resources that be can integrated into district fire plans.	
2	Community Engagement and Resilience Building	Support the development of a Firewise Community in Holbrook.	Oregon State Fire Marshal, Multnomah County Emergency Management
3	Structural Ignitability	Designate staff time to continue defensible space assessments in the Holbrook community and support defensible space grants.	Oregon State Fire Marshal, Multnomah County Emergency Management
4	Land and Vegetation Management	Thin trees on key arterial routes to maintain evacuation routes.	Multnomah County Transportation
5	Wildfire Prevention	Install and maintain a wildfire risk (peacock) sign at Logie Trail Road near Rainbow Lake.	Oregon Department of Forestry, Oregon State Fire Marshal
6	Operational Capacity and Coordination	Identify training opportunities for Incident Command System positions that coordinate resources – liaison, public information, command and general staff, aviation support.	Multnomah County Land Use
7	Operational Capacity and Coordination	Enhance coordination with local and regional partners to plan for and resource share unmanned aviation planning and equipment.	FEMA, Oregon State Fire Marshal
8	Operational Capacity and Coordination	Shore up mutual aid agreements and communication with neighboring districts to clarify response planning in areas where Scappoose Fire would be the first on-scene for a wildfire.	Regional Disaster Preparedness Organization
9	Operational Capacity and Coordination	Improve access to wildland areas by partnering with local park organizations to deploy fire locks at park gates.	Portland Fire & Response, Tualatin Valley Fire & Rescue, Sauvie Island Fire
10	Operational Capacity and Coordination	Assess where district boundaries or response communication protocols can be re-evaluated to lower response times by area districts.	Regional and Local Park Agencies
11	Operational Capacity and Coordination	Identify training opportunities for Incident Command System positions that coordinate resources – liaison, public information, command and general staff, aviation support.	Multnomah County Board of Commissioners, Portland Fire and Rescue, Tualatin Valley Fire and Rescue

Communities at Risk

Location	Priority	Defensible Space	Access	Water	Public Lands	Private Lands	Camping Uses	Protection Capability	Burning	Preparedness	Communications	Steep Slopes	Description
Gilkenson Road	Medium	●	●	●	●	●	●	●		●		●	Gilkenson Road has about 28 residences. Access is limited and some homes are isolated. The area has heavy fuels on very steep slopes and intensive forest management activities occur around and within the community.
Holbrook	High	●	●	●	●	●	●	●		●		●	Holbrook is an unincorporated community with about 50 residences. The community is in the southern portion of Scappoose Fire's service area and has extended response times from the main station. Access is severely limited,
Logie Trail Road	High	●	●	●	●	●	●	●		●		●	This area is a high priority for prevention efforts because it is difficult to access, there are heavy fuels and steep slopes and

Priority Fuel Mitigation Location	Project Details
Logie Trail Road	Tree thinning to maintain safe evacuation route
Rocky Point Road	Tree thinning to maintain safe evacuation route
Morgan Road	Tree thinning to maintain safe evacuation route
Holbrook	Defensible space projects identified through home assessment