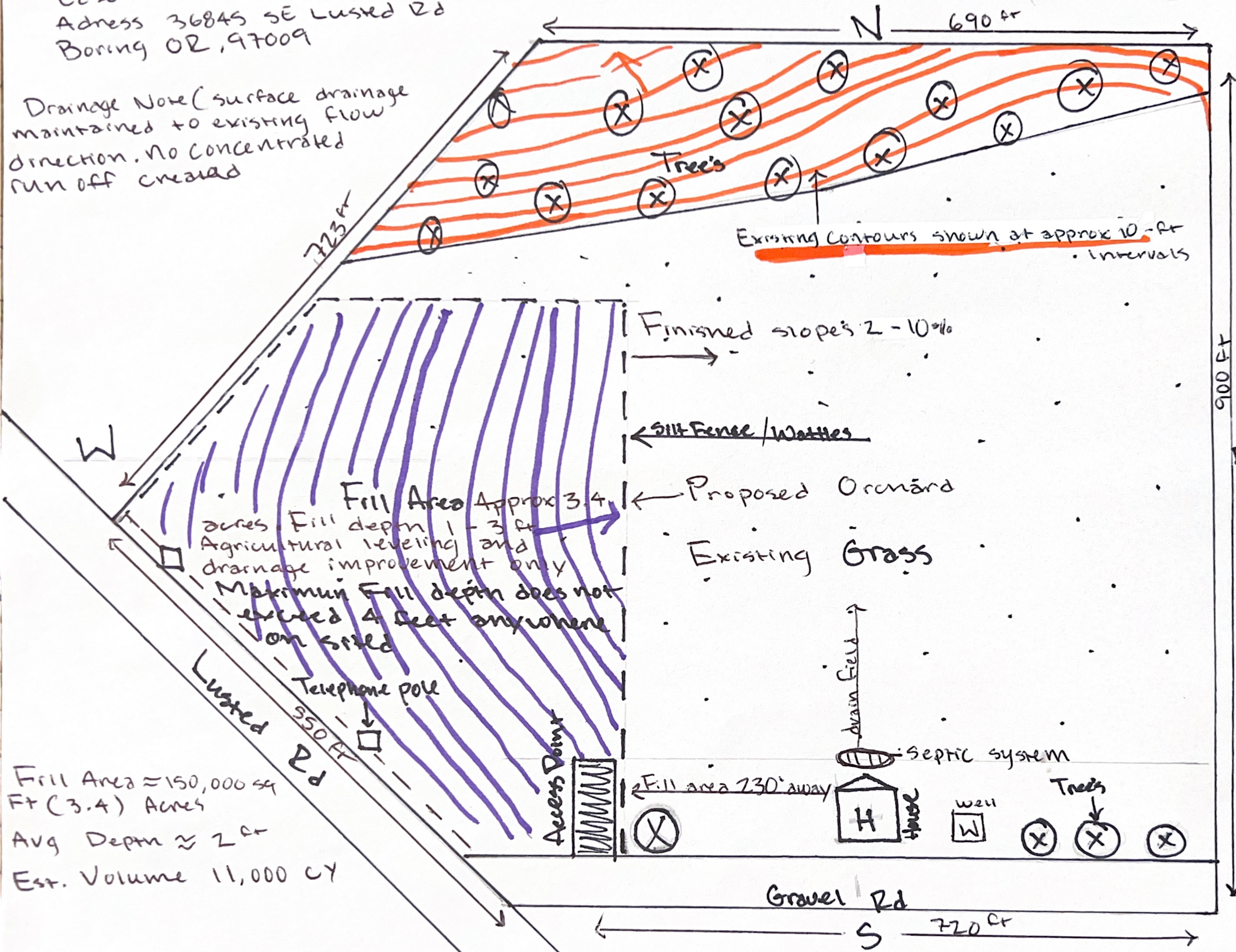


Case NO T2-2025-0068
 Address 36845 SE Lusted Rd
 Boring OR, 97009

Drainage Note (surface drainage maintained to existing flow direction. No concentrated run off created)



$3/4 = 100 \text{ ft}$

Fill Area $\approx 150,000 \text{ sq Ft}$ (3.4) Acres
 Avg Depth $\approx 2 \text{ ft}$
 Est. Volume 11,000 CY